

# Biocrust-linked changes in soil aggregate stability along a climatic gradient in the Chilean Coastal Range

Nicolás Riveras-Muñoz<sup>1\*</sup>, Steffen Seitz<sup>1</sup>, Kristina Witzgall<sup>2</sup>, Victoria Rodríguez<sup>3</sup>, Peter Kühn<sup>1</sup>, Carsten W. Mueller<sup>4</sup>, Rómulo Oses<sup>5</sup>, Oscar Seguel<sup>6</sup>, Dirk Wagner<sup>3,7</sup>, and Thomas Scholten<sup>1</sup>

5 <sup>1</sup>University of Tübingen, Department of Geosciences, Soil Science and Geomorphology, Rümelinstr. 19–23, 72070 Tübingen, Germany

<sup>2</sup>Technical University of Munich, Soil Science, Emil-Ramann-Str. 2, 85354 Freising, Germany

<sup>3</sup>GFZ German Research Centre for Geosciences, Section 5.3 Geomicrobiology, Telegrafenberg, 14473 Potsdam, Germany

10 <sup>4</sup>Department of Geosciences and Natural Resource Management, University of Copenhagen, Copenhagen, Denmark

<sup>5</sup>Universidad de Atacama, Centro Regional de Investigación y Desarrollo Sustentable de Atacama (CRIDESAT), Copayapu 485, Copiapó, Chile

15 <sup>6</sup>Universidad de Chile, Facultad de Ciencias Agronómicas, Av. Santa Rosa #11315, La Pintana, 8820808 Santiago, Chile

<sup>7</sup>University of Potsdam, Institute of Geosciences, Karl-Liebknecht-Str. 24-25, 14476 Potsdam, Germany

*Correspondence to Nicolás Riveras-Muñoz (nicolas-andres.riveras-munoz@uni-tuebingen.de)*

**Abstract.** Biological soil crusts (biocrusts) composed of cyanobacteria, bacteria, algae, fungi, lichens, and bryophytes stabilize the soil surface. This effect has mainly been studied in arid climates, where biocrusts constitute the main biological agent to stabilize and connect soil aggregates. Besides, biocrusts are an integral part of the soil surface under mediterranean and humid climate conditions, mainly covering open spaces in forests and on denudated lands. They often develop after vegetation disturbances, when their ability to compete with vascular plants increases, acting as pioneer communities and affecting the stability of soil aggregates. To better understand how biocrusts mediate changes in soil aggregate stability under different climate conditions, we analyzed soil aggregate samples taken under biocrust communities from four national parks in Chile along a large climatic gradient ranging from (north to south) arid (Pan de Azúcar), semi-arid (Santa Gracia), mediterranean (La Campana) to humid (Nahuelbuta). Biocrust communities showed a stabilizing effect on the soil aggregates in dry fractions for the three northern and the wet aggregates for the southernmost sites. Here, permanent vascular plants and higher contents of organic carbon and nitrogen in the soil control aggregate stability more than biocrusts, which are in intense competition to higher plant communities. Moreover, we found an increase in stability for aggregate size classes <2.0 mm and 9.5 – 30.0 mm. The geometric mean diameter of the soil aggregates showed a clear effect due to the climatic gradient, indicating that the aggregate stability presents a log-normal instead of a normal distribution, with a trend of low change between aggregate size fractions. Based on our results, we assume that biocrusts affect the soil structure in all climates. Their role for aggregate stability is masked under humid conditions by higher vegetation and organic matter contents in the topsoil.

## 1. Introduction

In recent years, biological soil crusts (biocrusts) have gained particular interest as stabilizers of soil aggregates. Such biocrusts are highly variable communities of microscopic (cyanobacteria, algae, fungi, and bacteria) and macroscopic (lichens, bryophytes) organisms found on the surface and in the upper centimeters of the soil (Gao et al., 2017). They stabilize the soil surface (Garcia-Pichel et al., 2016), especially in arid climates, where biocrusts are the main biological agents for consolidating and connecting soil aggregates (Belnap and Büdel, 2016). However, biocrusts are also present in more mesic regions (e.g., pine barrens, serpentine soils, temperate steppe) (Belnap et al., 2016), but due to their limited ability to compete for light, they are mainly relegated to open spaces or interspaces between vascular plants where sunlight reaches the soil surface (Malam Issa et al., 1999).

Because of their simple structure, biocrusts are present in a wide variety of climatic conditions. Biocrust organisms lack specialized desiccation control structures, such as stomata or impermeable cuticles, so their water content depends on the humidity in the surrounding environment (Thielen et al., 2021). However, low water demand, high drought tolerance (Chen et al., 2020), the ability to grow actively only when water is available, and to recover without physiological damage even after complete drying out for an extended period (Oliver et al., 2005) compensate the lack of dedicated structures. For this reason, biocrusts form an almost continuous layer in arid regions where water availability limits vascular plant cover (Colesie et al., 2014; Grote et al., 2010). By slightly increasing the water availability, areas covered by plants and biocrusts increase in self-organized patterns where both coexist. However, when water demand is no longer restrained, vascular plants have an advantage using light due to their canopy development, which leads to a decline of biocrusts (Chen et al., 2018).

The cover and composition of biocrusts strongly depend on water availability (Bowker et al., 2016). Under dry conditions, with high potential evapotranspiration, biocrusts are dominated by cyanobacteria, bacteria, and micro-fungi, with few bryophytes or lichens present. However, the occurrence of lichens is not restricted to more humid locations, but lichens were also found in arid regions like Pan de Azucar in northern Chile (Jung et al., 2020b; Jung et al., 2020a). It implies that the external morphology of the biocrusts ranges from smooth to rugose (Chamizo et al., 2016). In terms of soil conditions, the water-holding capacity determines how much water can be stored in the soil. Typical sources of soil water are precipitation in general and, more specifically, at valley bottoms with close connection to the groundwater table, also groundwater. Further, available water for lichen growth can be provided by fog and dew (Jung et al., 2019). Pore space and pore size and following water-holding capacity of a soil largely depends on the parent material and its degree of weathering. Thus, soil formation indirectly controls the distribution and composition of biocrusts at ecoregional and local scales (Bowker et al., 2016). For instance, Steven et al. (2013) showed that the composition of biocrust communities differed at vertical scales of a few centimeters in soils with different parent material origins, while Bowker et al. (2016) conclude that heterogeneous distributions in parent materials result in abrupt transitions in biocrust distribution and cover.

Biocrusts can be understood as an organic-sedimentary system within the topsoil where the inorganic and the organic part play dynamic roles in determining the architecture, evolution, and properties of the system, including structure and aggregate stability. On a small spatial scale, biocrusts interact with the soil system in nitrogen and carbon cycling (Barger et al., 2016). Globally, Elbert et al. (2012) pointed out that cryptogamic covers take up 3.9 Pg C per year. The main processes of nitrogen enrichment are biological fixation and dust capture, while nitrogen

75 losses typically appear via dissolution, volatilization, and erosional loss (Barger et al., 2016). Photosynthesis is the most crucial carbon fixation process (Elbert et al., 2012; Porada et al., 2014), and soil erosion and biological decomposition are the primary loss source of carbon and other nutrients (Li et al., 2008).

80 Biocrusts affect soil erosion acting as a physical barrier that shields the soil from the direct exposition to water and wind (Seitz et al., 2016), providing protection to the effect of raindrops and thus splash erosion (Seitz et al., 2017; Goebes et al., 2015) and modulating the abrasive effect of wind and surface runoff (Belnap and Büdel, 2016). At the same time, biocrusts control water flow across the landscape and through the soil matrix (Thielen et al., 2021; Eldridge et al., 2020). Eldridge et al. (2000) described a decrease in surface runoff and an increase in water infiltration in the presence of biocrusts under semi-arid conditions, related to a reduction in sediment discharge. The influence of biocrusts on the composition of the soil porosity is variable and depends on its stage of development and composition. In some cases, this structuration generates discontinuities that hinder the flow of water in the soil, while in others, it generates a decrease in the tortuosity that is reflected in a rapid infiltration (Fischer et al., 2013). Water infiltration usually is inversely related to surface runoff (Lichner et al., 2012). The successional stage of biocrusts affects water repellency compared to bare soil (Drahorad et al., 2013). It has been observed that with the development of biocrusts, the water repellency increased, and the sorptivity and conductivity decreased (Fischer et al., 2012; Lichner et al., 2012). Therefore, biocrusts affect soil erosion and hydrology through a wide variety of processes (Belnap and Büdel, 2016).

95 In regards to the stability of the soil surface, biocrusts further have a binding effect on aggregates and can form coherent structures (Belnap and Büdel, 2016). Typically, the organic carbon in the form of exo-polysaccharides or structural filaments of the different organisms present within biocrust communities causes soil stabilization (Garcia-Pichel et al., 2016). Other structure-forming processes due to biocrusts, although to a lesser extent, are the compressive and drying action on the soil matrix and the pH-dependent dissolution of cementing salts (Bowker et al., 2016). The biocrusts-induced soil aggradation results in the formation of a defined layer, increasing the soil resistance and resilience to wind and water (Rosentreter et al., 2016).

100 Biocrusts stabilize individual aggregate units through different mechanisms depending on their species composition (Garcia-Pichel et al., 2016). For instance, bacteria, cyanobacteria and also green-algae play a crucial role in forming and stabilizing aggregates by extracellular polymeric substances that glue soil particles together (Six et al., 2004; Lewin, 1956). Vegetal debris serves as aggregation cores where the soil microorganisms use it as an energy source, but rapid decomposition is limited by the interaction with the inorganic matrix (Oades and Waters, 1991). On the other hand, fungi are important in forming soil aggregates due to their hyphal structure, which physically enmeshes microaggregates and soil particles (Totsche et al., 2018). In summary, soil aggregate stabilization processes are dynamic and occur at different temporal and spatial scales, where an aggregate of soil particles is built up of structural units of various sizes held together by various binding agents.

105 In this study, we investigate how and to what extent biocrusts under different climatic conditions stabilize the soil surface. Therefore, we compare the stability of macroaggregates and varying soil properties in topsoil with or without biocrust cover along a climatic gradient from arid to humid climate conditions along the Chilean Coastal Range. We test the following hypotheses:

115

- (i) if biocrusts cover the soil surface, soil aggregates show a higher stability because the biocrusts protect the soil surface physically, shelter soil organic matter within aggregates, modify the structure of microbial communities, and change water flow into the soil,
- (ii) if the climate is arid, the effect of biocrusts on the soil surface is most pronounced because other sources of organic matter are at minimum and biocrusts represent the main soil cover, and
- (iii) if the humidity of the climate increases, the stabilizing effects of biocrust are reduced, although without disappearing entirely, because water availability increases and higher vegetation hinder the growth of biocrusts.

## 2. Materials and methods

### 120 2.1. Study sites and experimental settings

In order to assess the climatic effect on soil and its interactions with biocrusts, four study sites distributed between latitudes from 26°06'S to 37°48'S and over 1300 km were established in the Chilean Coastal Range: Pan de Azúcar National Park (PA), Santa Gracia Natural Reserve (SG), La Campana National Park (LC) and Nahuelbuta National Park (NA), corresponding to arid, semi-arid, mediterranean and humid climates, respectively (Bernhard et al., 125 2018).

The study sites are comparable in geology, geomorphology, land use, and glacial and volcanic influence (Bernhard et al., 2018). The parent material in all the study sites is granitoid, keeping this factor of soil formation nearly constant along the studied gradient (Oeser et al., 2018). The dominant topography is generally fluvial valleys, and the sites had no glacial influence during the last glaciation (Hulton et al., 2002). The sites are located within nature 130 protection areas, with limited anthropogenic influence compared to the surrounding areas. Despite this, the occasional entry of cows to LC (Rundel and Weisser, 1975) and goats to SG (Armesto et al., 2007) has been reported. These conditions allow us to focus on the environmental effect on two other soil-forming factors, i.e., climate and vegetation.

The mean annual temperature (MAT) decreases from north to south (PA: 16.8 °C, SG: 13.7 °C, LC: 14.1 °C, NA: 135 6.6 °C). The mean annual precipitation (MAP) in the study sites increases from north to south (PA: 12 mm yr<sup>-1</sup>, SG: 66 mm yr<sup>-1</sup>, LC: 367 mm yr<sup>-1</sup>, NA: 1469 mm yr<sup>-1</sup>) with similar rainfalls distribution mostly concentrated in winter months (May to August) (Bernhard et al., 2018). The elevation of the sites increases from north to south (PA: 329 – 351 m a.s.l., SG: 642 – 720 m a.s.l., LC: 708 – 732 m a.s.l., NA: 1200 – 1270 m a.s.l.). Paleoclimate modeling studies (Mutz et al., 2018) indicate that these climate patterns have been persistent since the late 140 Pliocene; thus, the study sites represent the long-term impact of climate on the soil (Ewing et al., 2006). Bernhard et al. (2018) classified soils in the study sites as Regosols in PA, Cambisols for SG and LC, and Umbrisols in NA. In general, pedogenic processes such as soil depth, clay contents, organic matter accumulation, porosity, and activity ratio are correlated with the humidity of the site.

For each of the 4 study sites, 5 plots of 1 x 1 m were established as replicates. Each plot was located in the top- 145 slope position with south-facing exposition, considering the presence of site-typical biological soil crust communities, similar slope and aspect, lack of anthropogenic disturbance, and a maximum distance of 30 m between each plot. Each plot included patches with at least the size of the samples with 100% biocrust cover (BSC+), and additionally, a nearby point without biocrust cover (BSC-) was defined as control.

### 2.2. Biocrust sampling and classification

150 Biocrust patches of approximately 100 cm<sup>2</sup> were identified according to Lange and Belnap (2016) and collected in the field by carefully detaching the biocrust layer, removing the loose soil and storing it in paper envelopes after air-drying for every research plot. Samolov et al. (2020) describes the a biocrusts dominance in PA with cover up to 40%. With the other study sites dominated with higher vegetation that limits the cover of biocrust up to 15% in SG and 5% in LC and NA. Sampled communities showed all typical biocrust classes from cyanobacteria, 155 algae, fungi, lichens, liverworts, and mosses. The species composition further showed a graduating change from

lichen-dominating biocrusts in the northernmost site to bryophyte-dominating biocrusts in the southernmost site. Biocrusts in NA were specifically found in zones of forest soil disturbance. Bryophytes were sampled with rhizoids down to 5 mm depth; all other species down to a depth of 2 mm. Dominant macroscopic biocrust species were determined for each of the four sites to the genus level by morphological characteristics using a stereomicroscope (Leitz TS, Wetzlar, Germany), a transmitted-light microscope (Leitz Laborlux S, Wetzlar, Germany), and ultraviolet light. Species groups were separated into bryophytes (Lightowers, 1985; He, 1998; Ochyra and Matteri, 2001; Cuvertino et al., 2012; Fariña and Ardiles, 2014) and lichens (Galloway and Quilhot, 2009) and assigned to the different regions (Table 1). Baumann et al. (2018) based in morphological identification of enrichment cultures reported that the biocrusts of all studied areas was composed of 18 to 15 species of algae and cyanobacteria; where the richness of green algae increased, while the richness of cyanobacteria decreased with increasing humidity and decreasing mean annual temperature. While Samolov et al. (2020) based in morphological and molecular traits reported 18 species in PA, 26 species in SG, 40 species in LC and 27 species in NA. A more detailed survey and classification of individual species, including algae and cyanobacteria, will be sought for further studies.



170 **Figure 1.** Biological soil crust sampled for PA (a), SG (b), LC (c) and NA (d).

**Table 1.** Taxonomical composition of mosses and lichens in the biological soil crust for the study sites along the climatic gradient.

Site / Division	Family	Genus	Number of species
PA			

<b><u>Lichens</u></b>	Cladoniaceae	<i>Cladonia sp.</i>	2
	Verrucariaceae	<i>Placidium sp.</i>	2
	Lecanoraceae	<i>Lecidella sp.</i>	1
	Rhizocarpaceae	<i>Rhizocarpon sp.</i>	1
<b>SG</b>			
<b><u>Mosses</u></b>	Pottiaceae	<i>Syntrichia sp.</i>	2
	Pottiaceae	<i>Tortella sp.</i>	2
Lichen genera unidentified			2
<b>LC</b>			
<b><u>Mosses</u></b>	Bartramiaceae	<i>Philonotis sp.</i>	1
	Bryaceae	<i>Bryum sp.</i>	1
	Pottiaceae	<i>Syntrichia sp.</i>	2
	Pottiaceae	<i>Tortella sp.</i>	2
Moss and lichen genera unidentified			2 + 1
<b>NA</b>			
<b><u>Mosses</u></b>	Amblystegiaceae	<i>Acrocladium sp.</i>	1
	Amblystegiaceae	<i>Amblystegium sp.</i>	1
	Bartramiaceae	<i>Bartramia sp.</i>	1
	Bryaceae	<i>Bryum sp.</i>	1
	Dicranaceae	<i>Campylopus sp.</i>	2
	Pterigynandraceae	<i>Myurella sp.</i>	1
Liverwort, lichen and fungi genera unidentified			2 + 2 + 1

### 2.3. Soil sampling and analyses

175 For soil characterization, bulk topsoil samples (0 – 5 cm) were taken with metal-core sample augers directly under biocrust patches and in comparative zones without biocrust cover and sieved to 2 mm after air drying. Bulk density (BD) and soil water content were determined gravimetrically. The particle size distribution was determined for seven fractions according to Köhn (1929) combining sieving of fractions >20 µm and pipetting of fractions <20 µm. Soil texture was interpreted according to the WRB soil classification system (Jahn et al., 2006). Soil pH was determined in water by a WTW pH 340 (WTW GmbH, Weilheim, Germany) using a Sentix 81 electrode, and electrical conductivity was measured with a conductivity meter (LE703, Mettler Toledo, USA). Total carbon (C<sub>t</sub>) and nitrogen (N<sub>t</sub>) of the bulk topsoil samples (0 – 5 cm) were analyzed using oxidative heat combustion at 1150 °C in a Vario EL III elemental analyzer (Elementar Analysensysteme GmbH, Hanau, Germany). Total organic carbon (TOC) was corrected by the carbonates content of samples with pH >6.7. The carbonate content was determined from the volumetric titration of the reaction with 10% HCl using a calcimeter (Eijkelkamp, Giesbeek, Netherlands).

180

185 The physical stability of soil aggregates was measured to quantify the destructive effect of water and mechanical forces through two-stage sieving: dry and wet (Hartge and Horn, 2009). Water-stable aggregates were measured by sieving 200 g of undisturbed, air-dried soil samples, homogenized to 30.0 mm, through a stack of sieves of decreasing mesh size (19.0, 14.7, 9.8, 6.8, 4.8, 3.3, 2.0 mm, plus that collected the remainder below 2.0 mm) and

190 then repeating the same process underwater (Six et al., 2000). Finally, coarse fragments (stones) were removed  
 and the values for each size were calculated relative to weight of the initial sample. With this aggregate stability  
 data, accumulated frequency curves were calculated, and a set of stability indexes were estimated: difference in  
 mean weight diameter of the aggregates ( $\Delta MWD$ ) (Hartge and Horn, 2009; Van Bavel, 1950; Loaiza Puerta et al.,  
 2018), difference in geometric mean diameter ( $\Delta GMD$ ) (Mazurak, 1950; Kemper and Rosenau, 1986), water  
 stability aggregate ratio (WSAR) (Liu et al., 2014) and the proportion of soil macroaggregates of a diameter less  
 195 than 2 mm ( $R_{<2\text{ mm}}$ ) (Liang et al., 2015) as described below.  $\Delta MWD$  and  $\Delta GMD$  indicate how much the average  
 diameter of soil aggregates changes between dry and wet conditions. The main difference between  $\Delta MWD$  and  
 $\Delta GMD$  is that the first considers a linear behavior between the different aggregate size classes, while the  $\Delta GMD$   
 considers a logarithmic fitting.

*Difference in mean weight diameter ( $\Delta MWD$ ):*

$$200 \quad \Delta MWD = \frac{\sum_{i=1}^n X_i * W_i}{\sum_{i=1}^n W_i} \quad (1)$$

where  $W_i$  is the corrected mass proportion of stable aggregate fraction  $i$  in the total 2–30 mm aggregate fractions  
 and  $X_i$  is the mean diameter of stable aggregate fraction  $i$ .

*Difference in geometric mean diameter ( $\Delta GMD$ ):*

$$205 \quad \Delta GMD = \exp \left[ \frac{\left( \sum_{i=1}^n W_i \lg X_i \right)}{\left( \sum_{i=1}^n W_i \right)} \right] \quad (2)$$

where  $X_i$  is the sieve opening size (mm);  $W_i$  is the proportion of the total sample mass occurring in the  $i$ -size  
 fraction;  $n$  is the number of particle fractions.

*Water stability aggregate ratio (WSAR):*

$$WSAR(\%) = WSA/A * 100 \quad (3)$$

where  $WSA$  is the >2 mm water-stable aggregate content and  $A$  is the >2 mm dry aggregate content.

210 *Proportion of soil macroaggregate of a diameter less than 2 mm ( $R_{<2\text{ mm}}$ )*

$$R_{<2\text{ mm}} = \frac{W_{r>2}}{W_T} * 100 = \left( 1 - \frac{W_{r<2}}{W_T} \right) \quad (4)$$

where  $W_{r<2}$  is the weight of macroaggregates with a diameter less than 2 mm,  $W_T$  is the total sample weight,  $W_{r>2}$   
 is the weight of microaggregates with a diameter less than 2 mm.



## 2.4. Statistical analyses

215 The influence of the climatic gradient (study site) and biocrust presence on physicochemical soil parameters and  
aggregate stability in 40 plots (4 study sites, 2 biocrust treatment, 5 replicates) were assessed by factorial  
generalized linear models (GLM) because of the lack of normal distribution for most of the variables according  
to the Shapiro-Wilk test. The link functions used for each model were selected based on the lowest Akaike  
information criterion (AIC) selection and characteristics of the data (skewness, counts, continuous variables,  
220 proportions) between Gaussian, Gamma, inverse Gaussian, and Tweedie distributions. Differences in treatments  
were tested using Tukey post-hoc-test with  $p < 0.05$  as significance criteria. The analyses were conducted in *R*  
4.2.0 (Team, 2018) and the GLM distributions were extended from the base *R* core with the *Tweedie* 2.3.3 package  
(Dunn, 2017). All visualizations were made with the package *ggplot2* 3.3.3 (Wickham, 2016).

### 3. Results

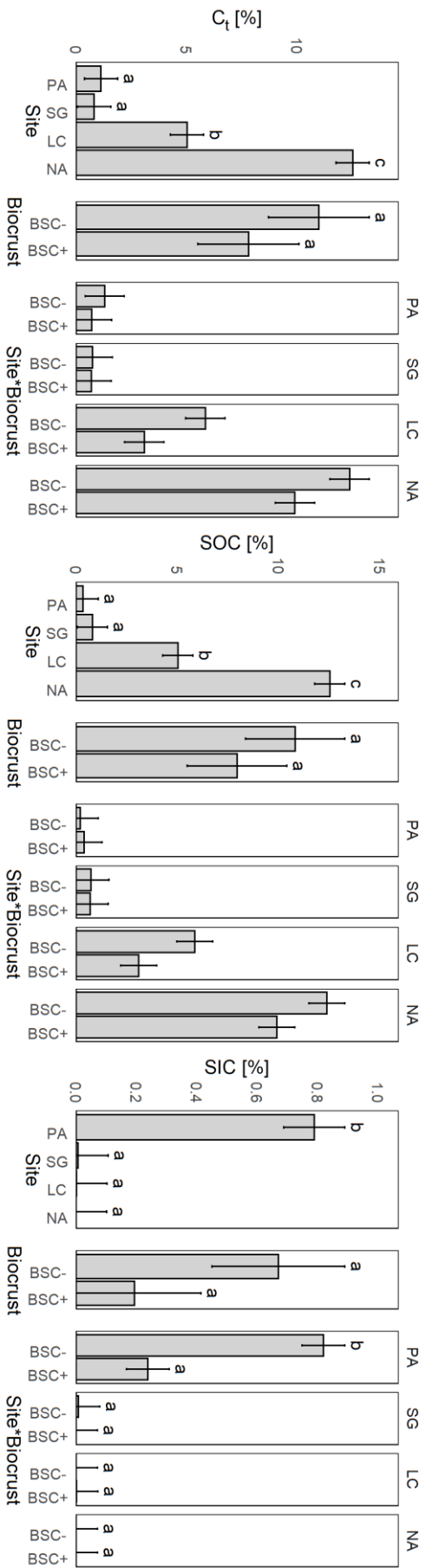
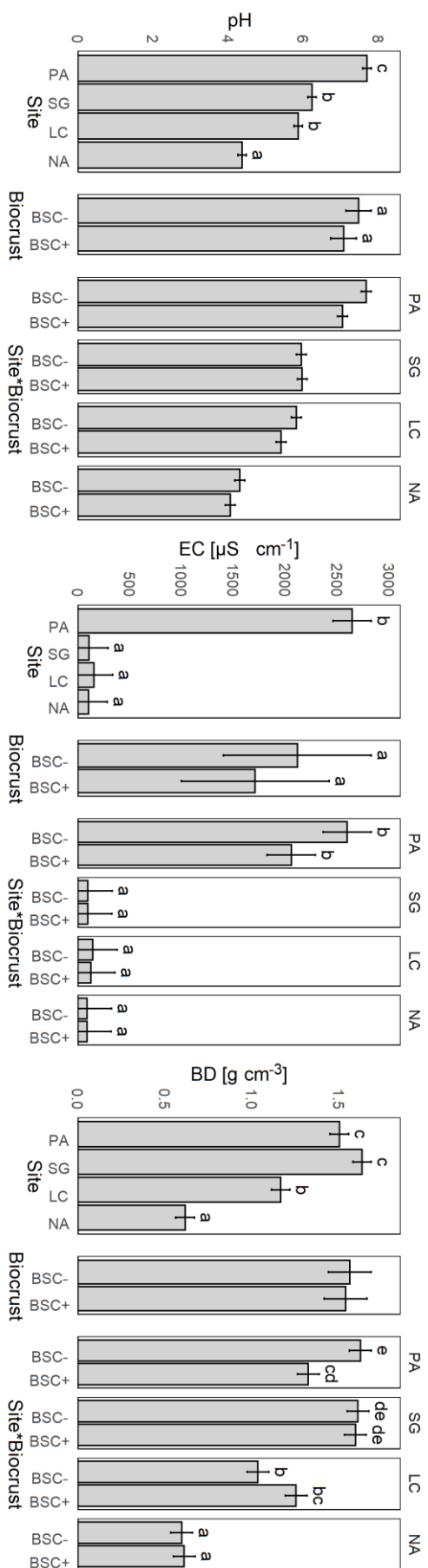
#### 225 3.1. Soil properties

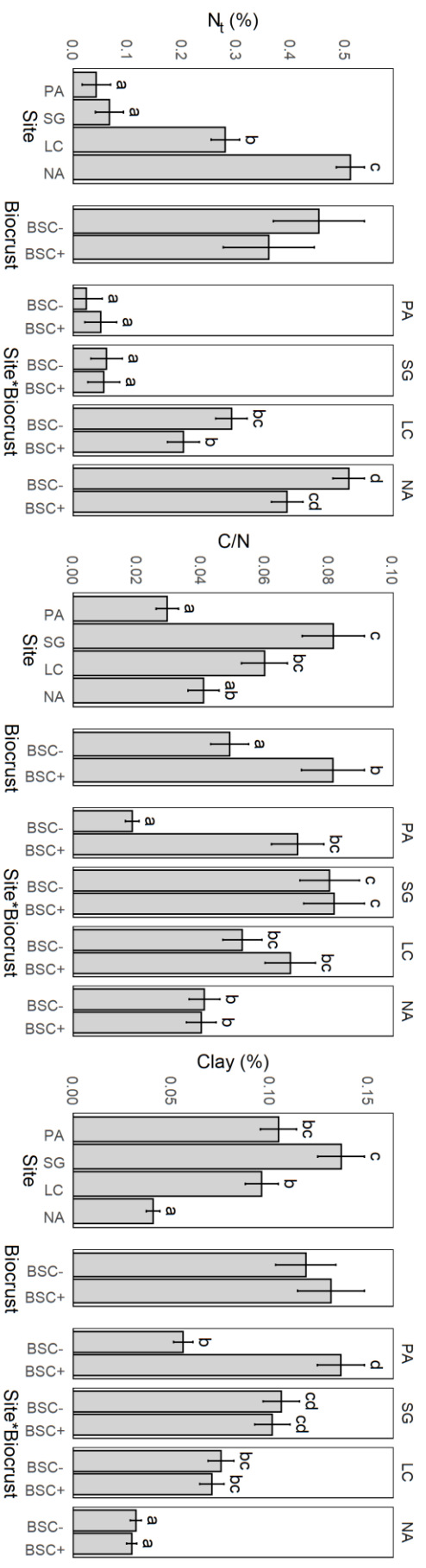
Soil pH was significantly affected by the climatic gradient (**Error! Reference source not found.**), with mean values of 7.7 in PA, 6.2 in SG, 5.9 in LC, and 4.4 in NA, with acidification levels of 6.2 in BSC- to 5.9 in BSC+. In terms of electrical conductivity (EC), a remarkably higher value of 2646.1  $\mu\text{S cm}^{-1}$  in PA is outstanding in comparison with the low and homogeneous values of 109.3  $\mu\text{S cm}^{-1}$  for SG, 153.8  $\mu\text{S cm}^{-1}$  for LC, and 102.3  $\mu\text{S cm}^{-1}$  for NA. EC did not differ for the biocrust treatment. Nevertheless, when looking to the site and biocrust in combination, the BSC+ results in a reduction of the EC in PA, meanwhile in SG, LC and NA there was not noticeable change.

235 Bulk density (BD) showed a significant difference between the study sites, with higher values in the two dryer sites, with 1.5  $\text{g cm}^{-3}$  in PA, and 1.6  $\text{g cm}^{-3}$  in SG, and a decrease in the more humid sites, with 1.2  $\text{g cm}^{-3}$  in LC and 0.6  $\text{g cm}^{-3}$  in NA. Biocrust showed no changes for BD in SG and NA, but in PA BSC+ results in a reduction of the BD of 18.2%, while in LC BSC+ showed an increase in BD of 21.9% (Figure 2) (**Error! Reference source not found.**).

Total carbon ( $C_t$ ) content was directly proportional to the humidity along the climatic gradient (Figure 2), with values of 1.1% in PA, 0.8% in SG, 5.0% in LC and 12.5% in NA, but with a significant decrease when the BSC+ is present, from 5.6% to 4.2% in average. Soil inorganic carbon (SIC) was significantly higher in PA with 0.8% of the mass of the soil, while SG, LC and NA on average were not found. When looking at the SIC along the different sites and under biocrust in combination, the BSC+ results in a reduction of 70.1% in the SIC for PA, while in SG, LC and NA was no change. Soil organic carbon (SOC) showed a similar pattern as  $C_t$ , with a reduction in PA to 0.3% and the same 0.8% in SG, 5.0% in LC and 12.5%. Total nitrogen ( $N_t$ ) content was directly proportional to the humidity along the climatic gradient, with values of 0.04% for PA, 0.07% for SG, 0.28% for LC and 0.51% for NA (**Error! Reference source not found.**). BSC+ showed a reduction of 30.3% in LC and 22.3% in NA, while the  $N_t$  content remained stable in PA and SG under the influence of BSC. The relation between  $C_t$  and  $N_t$ , expressed as C/N, showed significantly different values of 33.9 in PA, 12.3 in SG, 16.7 in LC, and 24.5 in NA on average; and with a significant decrease from 27.0 in BSC- to 16.7 in BSC+ (Figure 2). It is important to note that although PA and NA present the highest values, the condition changes diametrically when observed together with the BSC+ treatment, with a large dispersion in PA and stable values in NA.

255 The distribution of the soil particle size classes did not show clear patterns along the climatic gradient, with PA deviating from it in all cases. Despite this, the observed values were significant, with clay values of 9.6% for PA, 7.3% in SG, 10.4% in LC and 24.6% in NA, while when looking at the interaction between site and biocrust, there is an increase of 143.4% in clay content for the BSC+ condition, while for SG, LC and NA was no difference; silt with 28.9% in PA, 18.7% in SG, 20.0% in LC and 21.9% in NA; and sand with 61.5% in PA, 73.9% in SG, 69.6% in LC and 53.5% in NA. When biocrusts were present, a significant decrease from 13.6% to 12.6% in clays and an increase from 21.2% to 23.6% in silt was observed with higher dispersion for the arid site (PA) (Figure 2) (**Error! Reference source not found.**).





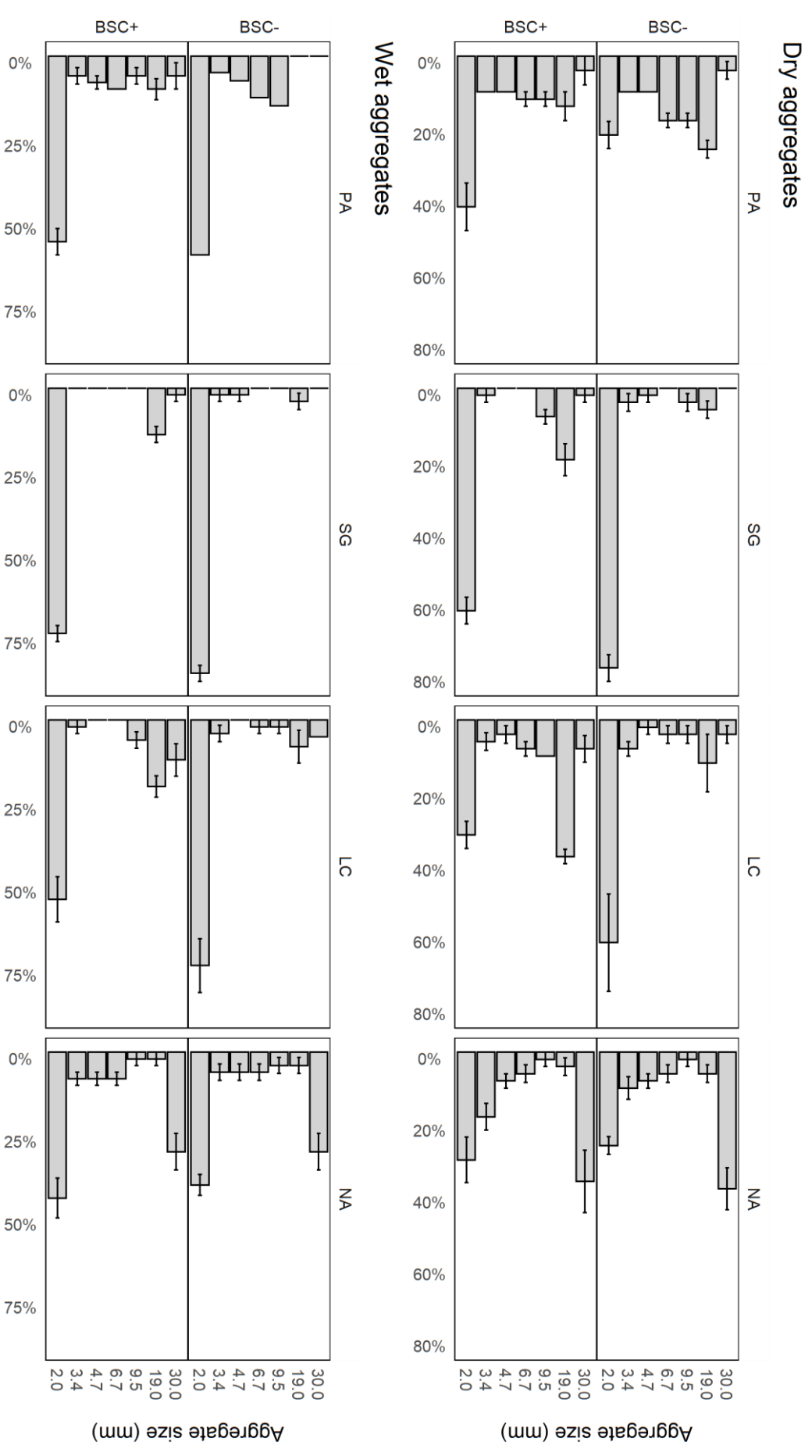
**Figure 2.** Mean and standard error of soil properties for Pan de Azúcar (PA), Santa Gracia (SG), La Campaña (LC) and Nahuelbuta (NA), without (BSC-) and with biochar cover (BSC+), and the interaction of both factors. (EC = electrical conductivity, BD = bulk density, C<sub>t</sub> = total carbon, SOC = soil organic carbon, SIC = soil inorganic carbon,

$N_t$  = total nitrogen,  $CN$  = (carbon to nitrogen ratio). Significant factors include Tukey's Post-hoc-Test indicated by letters on the top of the bars. Different letters represent significant differences at  $p < 0.05$ .

### 3.2. Soil aggregate stability

270 Dry sieving showed a significant difference between study sites, but not for the biocrust treatment (Figure 3). Dry  
aggregates in the 19.0 – 30.0 mm range showed significantly different values of 4.4% in PA, 1.2% in SG, 5.5%  
in LC, and 36.2% in NA. The fraction 9.5 – 19.0 mm revealed differences in the interaction between study sites  
and biocrusts, increasing the proportion of aggregates from 13.2% in PA to 19.3% SG and 29.3% in LC, not in  
275 NA with only 2.9% in the presence of biocrusts. The aggregates between 6.7 – 9.5 mm showed a significant  
decrease from 13.3% in PA, 5.2% in SG, 6.5% in LC, and 4.1% in NA. In interaction with biocrusts, it showed a  
significant increase in the proportion when it was present. The fraction from 4.7 – 6.7mm showed significantly  
different values of 13.6% in PA, 3.4 % in SG, 5.0% in LC, and 5.6% in NA, while the interaction with biocrusts  
showed a significant increase when is present (BSC+). Aggregates from 3.4 – 4.7 mm size showed significance  
among study sites, with 9.8% in PA, 3.6% in SG, 4.4% in LC, and 7.9% in NA. Aggregates between 2.0 – 3.4  
280 mm showed a slightly similar amount of 9.9% in PA, 5.9% in LC, and 14.3% in NA, but with a minor proportion  
of 4.9% in LC, while when biocrust is present in LC, it showed a slight decrease. Finally, for the dry sieved  
aggregates under 2 mm, there was a significant reduction for the study sites, with values of 69.1% in SG and  
47.3% in LC relative to 30.1% in PA, but not in NA with 28.9%; while the biocrust effect in interaction with the  
site is significant with 60.6% in SG and 40.8% in LC, indicating the same proportion of aggregates in this site for  
285 SG with 30.0% and NA with 39.8%.

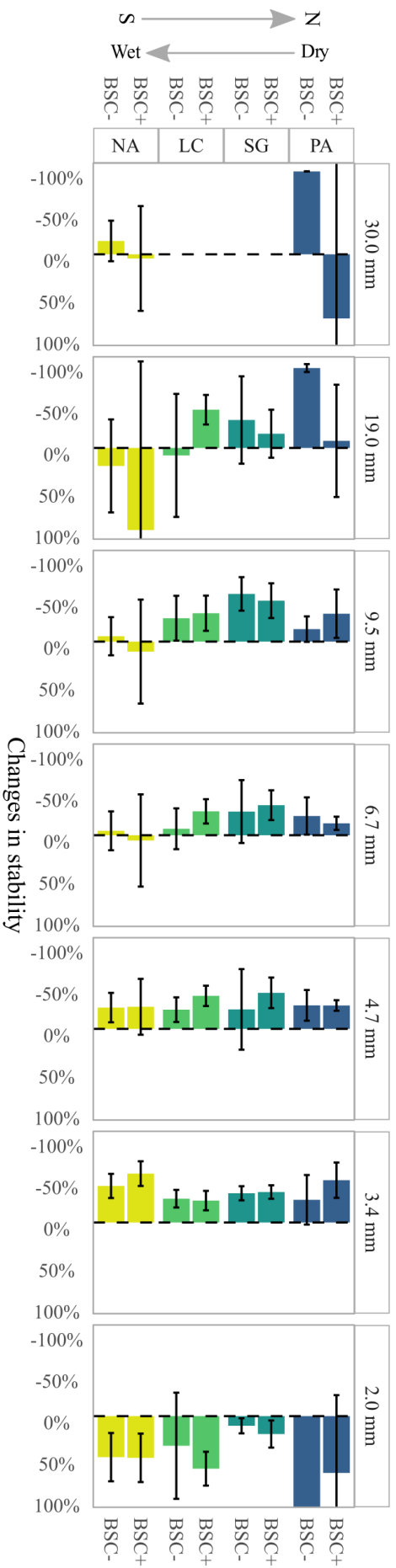
In a second stage, aggregate stability under wet conditions was characterized, with a clear difference between  
sites, while biocrusts had a significant effect only on the aggregate size classes <2.0 mm and 9.5 – 30.0 mm  
(Figure 3). At the same time, the fraction 19.0 – 30.0 mm showed an increasing significant pattern in the amount  
of aggregates, with 2.8% in NA, 0.8% in SG, 8.9% in LC and 29.9% in NA, while biocrusts significantly increased  
290 the proportion of aggregates by 35.6%, from 9.0% for BSC- to 12.2% for BSC+. For the fraction 9.5 – 19.0 mm,  
there were significant differences between the study sites, the biocrust effect, and its interactions, with an increase  
from 5.4% to 11.7% on average when biocrusts were present. The wet sieved aggregates in the range of 6.7 – 9.5  
mm showed significant differences only between the study sites, with 10.6% in PA, 2.5% in SG, 4.2% in LC and  
4.3% in NA. Wet aggregates in the range of 4.7 – 6.7 mm showed significant differences between the study sites  
295 with 10.6% in PA, 2.3% in SG, 3.7% in LC and 5.8 in NA. The fraction between 3.4 – 4.7 mm showed only  
significant differences between the study sites, with 6.9% in PA, 2.2% in SG, 3.0% in LC, and 6.1% in NA.  
Aggregates ranging from 2.0 – 3.4 mm showed differences between the study sites, with 5.8% in PA, 3.2% in SG,  
4.2% in LC, and 6.8% in NA. The fractions under 2.0 mm were significantly different for the study sites with  
58.3% in PA, 79.6% in SG, 62.4% in LC, and 41.3% in NA; and for biocrusts from 63.9% for BSC+ treatment to  
300 56.9% for BSC- treatment.



**Figure 3.** Mean value and standard error of aggregate proportion for dry and wet sieved fractions for Pan de Azúcar (PA), Santa Gracia (SG), La Campana (LC) and Nahuelbuta (NA) for biocrust (BSC+) and non-biocrust (BSC-) treatments. Significant factors and corresponding models for response variables are included in the appendix A.

305 When comparing the changes of the aggregate distributions between wet and dry conditions (Figure 4. Mean and standard deviation ), an irregular pattern was observed, with a general decrease in most of the analyzed fractions, except for an increase in the amount of aggregates of 19.0 mm for NA. This was even higher than for the BSC+ treatment. It is important to mention that NA also showed a slight increase in the proportion of 9.5 and 6.7 mm aggregates.





**Figure 4.** Mean and standard deviation of aggregate size distribution changes between dry and wet sieving for the sites Pan de Azúcar (PA), Santa Gracia (SG), La Campaña (LC), and Nahuelbuta (NA) for bio crust (BSC+) and non-bio crust (BSC-) treatments. Error bars were, in some cases, truncated for better visualization.

315 Soil aggregate stability was evaluated through different indexes, to integrate the different sizes and sieving  
conditions in a summary value. The difference in mean weight diameter of the aggregates ( $\Delta$ MWD) showed no  
significance in any of the conditions (Figure 5). However, there was a significant difference in the difference of  
the geometric mean diameter of the aggregates ( $\Delta$ GMD) for the study sites, with values of 1.86 mm for PA, 1.2  
mm for SG, 1.4 mm for LC, in comparison with the more stable condition of 0.83 mm for NA. The water-stable  
320 aggregates ratio was significant for the study sites, showing differences between NA with 81.1% and the other  
study sites (57.7% PA, 66.2% SG, and 73.4% LC). The ratio of soil macroaggregates of a diameter less than 2.0  
mm ( $R_{<2\text{ mm}}$ ) presents differences in the study sites and for biocrust treatments. SG showed a value of  $R_{<2\text{ mm}}$  of  
79.6% and NA of 41.9%, which was different from PA and LC with 58.6% and 62.4%, respectively. For biocrust  
treatments,  $R_{<2\text{ mm}}$  changed from 63.7% to 57.5% with biocrusts, indicating a biocrust-induced decrease in the  
325 proportion for this fraction. Finally, according to the analyzed indexes, NA showed the most stable conditions,  
and alternating PA and SG showed the most unstable conditions.

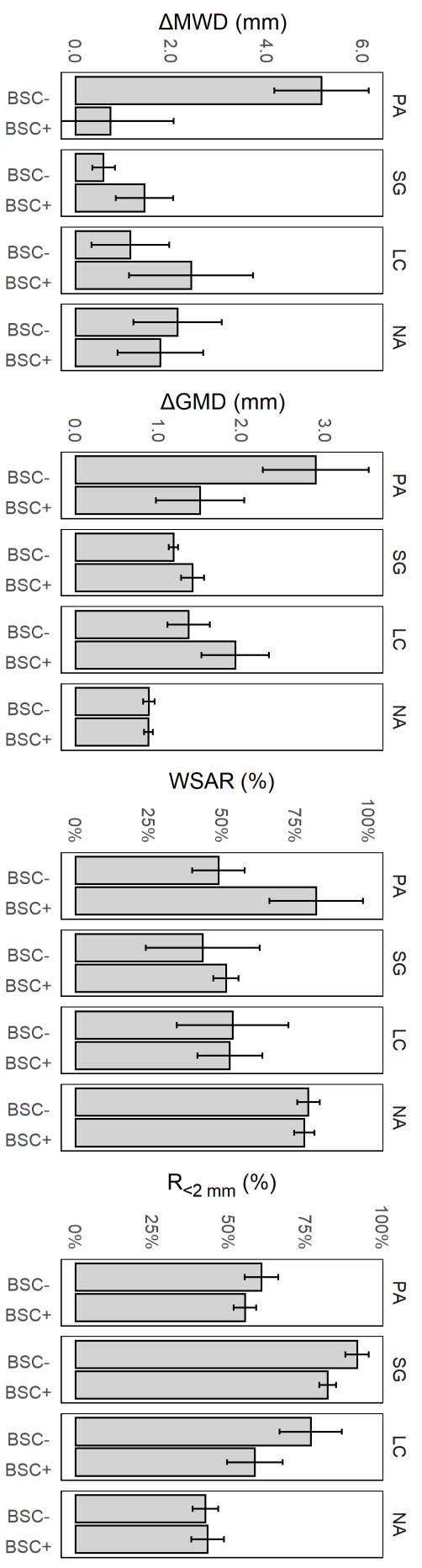


Figure 5. Mean and standard error of aggregate stability indexes for Pan de Azúcar (PA), Santa Gracia (SG), La Campana (LC) and Nahuelbuta (NA) for biocrust (BSC+) and non-biocrust (BSC-) treatments.  $\Delta MWD$  = difference in mean weight diameter,  $\Delta GMD$  = difference in geometric mean diameter, WSAR = water-stable aggregate ratio,  $R_{<2 \text{ mm}}$  = ratio of aggregates less than 2mm. Significant factors and corresponding models for response variables are included in the appendix A.

330 As shown in Figure 2, the climatic gradient (site) had significant pH, electrical conductivity (EC), bulk density  
(BD), total carbon ( $C_t$ ), soil organic carbon (SOC), soil inorganic carbon (SIC), total nitrogen ( $N_t$ ), C/N, clay, silt,  
sand, dry and wet aggregates under 30 mm,  $\Delta$ GMD, WSAR,  $R_{<2\text{ mm}}$ . Biocrust treatments were significant for clay,  
335 silt, pH, EC,  $C_t$ , SOC, SIC,  $N_t$ , C/N, and wet aggregates from 9.5 to 30.0 mm and  $>2$  mm, and  $R_{<2\text{ mm}}$ . Finally, the  
interaction of the site and biocrusts was significant for clay, bulk density (BD), total nitrogen ( $N_t$ ), dry aggregates  
from 4.7 to 19.0 mm and 0 to 3.4 mm, wet aggregates from 9.5 to 30.0 mm, and  $\Delta$ MWD.

## 4. Discussion

### 4.1. Aggregate stability and soil properties along the climatic gradient

The climatic gradient has a significant effect on the stability of soil aggregates. Using the geometric mean diameter ( $\Delta$ GMD), an index that replaces the linear fitting of  $\Delta$ MWD with a logarithmic one, significant differences for the study sites along the climatic gradient can be observed ( $p$ -value:  $<0.001$ ). When soil aggregate stability was evaluated with the difference in mean weight diameter ( $\Delta$ MWD), it did not show significant changes along the climatic gradient. WSAR, an index that shows the ratio of aggregates that persist stable after disruption by water, showed a similar behavior as  $\Delta$ MWD. The main difference between  $\Delta$ MWD and  $\Delta$ GMD is that  $\Delta$ GMD performs better in non-uniform particulate substances (Hatch and Choate, 1929; Gardner, 1956), which corresponds to soils equilibrated in the content of sand, silt, and clay (Mazurak, 1950) and pointing soil texture indirectly as a critical factor in aggregate stability along the climatic gradient. Further, considering the  $\Delta$ GMD data, an increase in stability was observed as moving along the climatic gradient to higher water availability conditions except for SG. The lower value of  $\Delta$ GMD for SG indicates a comparably higher aggregate stability as it would be expected when we assume a steady trend from arid to humid climate. In PA, in the drier north, the condition proved to be less stable than NA, despite the high content of inorganic carbon. SG presented the highest ratio of unstable aggregates under the studied range of sizes (highest  $R_{<2\text{mm}}$ ) and NA the lowest, with close to half of it, indicating augmented aggregate stability in the complementary range of sizes.

The effect of the climatic gradient is not only expressed in the stability of soil aggregates, but it is also present with different intensities in a variety of soil properties. The pH decreases continuously from the northern arid to the southern humid study site in accordance with Bernhard et al. (2018). The high pH in PA can be attributed to the constant input of atmospheric aerosols, e.g., salts, gypsum, and calcium carbonates (Ewing et al., 2006) in combination with the arid climate that allows salts to accumulate in the topsoil (Slessarev et al., 2016). Whereas in the southern sites, the forwarding increase of precipitations results in a reduction in the pH due to leaching of soluble salts (Slessarev et al., 2016) and an increase in soil respiration (Orchard and Cook, 1983). The accumulation of soluble salts is well established for the arid site PA, as saline conditions (Allison and Richards, 1954) are indicated by the high electrical conductivity value. These higher amounts of salts have a strong effect in structure degradation dynamics, linked to the destabilizing effect of sodium and stabilizing of carbonates (Corwin, 2021). Although  $C_t$  and  $N_t$  follow the climatic gradient, when comparing the C/N, PA and NA have higher values. High values of the C/N indicate a nitrogen limitation of plants and other organisms (Brust, 2019), pointing out that this occurs at the two opposite sites along the climatic gradient. This could be explained by the biological activity (Zhang et al., 2013), which may be close to a physiological limitation in the case of NA, while for PA, it may indeed be due to low nitrogen availability (Hooper and Johnson, 1999). However, there was also a high amount of carbonates in PA, which makes PA hardly comparable in terms of  $C_t$ . Despite the properties following the climatic gradient, SG deviates from the other sites in terms of higher bulk density (BD), lower clay, and higher sand content. This can indicate a degraded condition for the semi-arid site caused by the current land use, including grazing (Armesto et al., 2007), compacting the surface and thus activating erosive processes (Scholten and Seitz, 2019), in favor of the accumulation of sand particles (Govers, 1985). The aggregate distribution stresses this finding, where SG has a lower proportion of water-stable aggregates  $>2$  mm and a higher

375 water-destabilization of aggregates between 9.5 to 4.7 mm, indicating the nature of the structuring agent in that zone is water-soluble.

#### 4.2. Biocrusts altering soil properties along the climatic gradient

380 Despite these factors beyond the climatic gradient, biocrusts showed effects on clay, silt, pH,  $C_t$ ,  $N_t$ , C/N, and wet aggregates from 9.5 to 30.0 mm and >2 mm. However, as this was an observational study, it only allows establishing associations between factors and not cause-effect relationships (Cox, 1992; Rosenbaum, 2005). It is thus possible that changes in soil characteristics promote the biocrust establishment, as well as that biocrust establishment triggers changes in these properties (Belnap and Lange, 2003).

385 The biocrust treatments showed a significant decrease in pH ( $p$ -value: 0.002404), reflecting the biological activity of its constituent organisms, which acidifies the soil due to the carbon dioxide released by cellular respiration (Bachar et al., 2010). The pH values reported by Bernhard et al. (2018) are in the same range as ours but without differentiating between BSC+ and BSC-, as this factor was not part of their study. The content of  $C_t$  and  $N_t$  were significantly different when biocrusts were present, but it did not affect any of the aggregate sizes or stability indexes. In this sense, biocrusts play a role in the carbon and nitrogen cycles (Chen et al., 2000), as they are formed mainly by photosynthetic and nitrogen-fixing organisms (Maestre et al., 2013), but it has not an immediate impact on the soil aggregate stability and points out that the main stabilizing agent is of organic origin (Wagner et al., 390 2007; Six et al., 2004).

395 Considering the stabilizing effect of biocrusts on wet sieved aggregates between 9.5 and 30.0 mm, we could show that it occurs prominently at the three northern sites, whereas in NA there was no difference with and without biocrusts. This points to a threshold in the biocrust-induced stabilization of the soil aggregates between LC and NA and partially confirms our initial assumption that biocrusts have the greatest effect in arid conditions. However, the effect on aggregate stability for the wet condition varies according to the variable used, being specific for limited aggregate sizes in terms of mechanical disturbances (dry sieving), but without a substantial improvement concerning water stability (wet sieving). This lack of difference in wet sieved aggregate point to a non-soluble nature of the stabilizing agents, which can be attributed to stabilization due to organic structures and exudates (Rillig, 2004), and stress the idea that NA differs to the other sites in the mechanisms of aggregate stabilization as 400 a local adaptation, where due to the higher proportion of precipitation, is conducted by water stable mechanisms.

Soil aggregate stability showed clear differences along the climatic gradient. However, when considering the effect of biocrusts, differences were limited to the smallest aggregate size class ( $R_{<2mm}$ ) referring to changes in microaggregate size distribution as described by Totsche et al. (2018) Further, difference for wet sieved aggregates with and without biocrusts between 9.5 and 30.0 mm point to biocrust-induced stabilization of soil aggregates.

405 The results indicate that soil aggregate stabilization mechanisms are different in PA than at the other sites. With that in mind, it was found that in PA, biocrusts grow in areas with a lower content of clay and higher content of silt, which implies increased nutrient availability and water holding capacity (Chen et al., 2000), while the sand fraction was not related. However, the method used can amplify that difference since the determination of particle size distribution does not consider coarse fragments (Köhn, 1929), which were abundant at PA. In addition, the 410 soil covered with biocrusts showed a lower value for bulk density (BD) only for PA, while in the other sites, this

property was not affected. This can be interpreted as a biocrust-induced decrease in soil density due to increased intra- and extra-aggregate porosity and organic matter (Whitney et al., 2017) or that biocrusts grow under the least limiting condition (Bowker et al., 2014). Soils with biocrust cover showed a trend of lower electrical conductivity, which can be explained by inhibition of biocrusts by toxicity due to the accumulation of salts in the soil, or to the consumption of salts as a source of nutrients by the organisms in the biocrusts (Abed et al., 2019).

Biocrust plays a role along the climatic gradient affecting different properties, *i.e.*, clay, silt, pH, C<sub>t</sub>, N<sub>t</sub>, C/N, and wet aggregates from 9.5 to 30.0 mm and >2 mm. Nevertheless, the way that each property change responds to local conditions: In the arid northernmost site, there is a strong influence of the salts in terms of stabilization and establishment of biocrusts, while at the southernmost site, there is no stabilization of the aggregates, but a contribution to the carbon and nitrogen contents. The most consistent property along the climatic gradient was pH, indicator of biological activity. However, at the scale of the climatic gradient it is not possible to distinguish the origin of biological activity between plants, micro-organisms, fungi, bacteria, etc. Finally, considering the largest size of the persistent wet aggregates match with the characteristics attributed to fungi and bryophytes, capable of retaining micro-aggregates and soil particles between their hyphae and rhizoids, respectively (Kleber et al., 2007; Six et al., 2004; Totsche et al., 2018) and points to this as the most significant mechanism of soil aggregate stabilization of biocrusts.

## 5. Conclusions

430 This study aimed to investigate how and to what extent biocrusts stabilize soil aggregates along an arid to humid climatic gradient in Chile. We show that biocrusts play a role in soil aggregate stability along the climatic gradient by increasing the stability for wet aggregates from 9.5 to 30.0 mm and >2 mm. Biocrusts also modifies other soil properties such as C<sub>t</sub>, N<sub>t</sub>, C/N, clay, and sand, indicating an initial accumulation of organic matter that then give place to aggregation processes. The biocrusts effect on aggregates stability was lower under humid climate conditions, which indicates a transition in the main biotic agents driving the aggregation of the soil surface, moving from biocrust communities in arid regions to vascular plants in humid conditions.

435 Finally, we conclude that the biocrusts in our study area showed to be a valuable agent in stabilizing the upper topsoil layer, but for a narrow spectrum of conditions and mostly under arid conditions. Therefore, the effect could be considered a transitory situation in ecological succession towards a stable ecosystem. In this process, biocrusts improve conditions for other more demanding species such as vascular plants, initially improving the availability of carbon and nitrogen in the soil.

440



## Appendices

Appendix A. Significant factors for response variables based on generalized linear models. Models with significant interaction also include the predictors as simple parameters based on marginality principle. ( $p$ -value = 0: "\*\*\*\*";  $p$ -value = 0.001: "\*\*\*";  $p$ -value = 0.01: "\*\*").

Dependent variable	Distribution (link-function for GLM)	Significance for independent variable		
		Site	Biocrust	Site × Biocrust
Clay	Gaussian	***	*	
Silt	Inverse Gaussian	***	*	
Sand	Gaussian	***		
Fine Silt	Tweedie	***		*
Medium silt	Tweedie	***	***	*
Coarse silt	Tweedie	***		
Very fine sand	Gaussian	***		
Fine sand	Tweedie	***		
Medium sand	Gaussian	***		
Coarse sand	Tweedie	***		
pH	Gaussian	***	**	
EC	Tweedie	***		
BD	Gaussian	***		**
N <sub>t</sub>	Gamma	***		**
C <sub>t</sub>	Tweedie	***	**	
C/N	Tweedie	***	**	
19.0-30.0 mm Dry	Tweedie	***		
9.5-19.0 mm Dry	Tweedie	***		**
6.7-9.5 mm Dry	Tweedie	***		**
4.7-6.7 mm Dry	Tweedie	***		*
3.4-4.7 mm Dry	Tweedie	***		
2.0-3.4 mm Dry	Tweedie	***		*
>2.0 mm Dry	Tweedie	***		***
19.0-30.0 mm Wet	Tweedie	***	*	**
9.5-19.0 mm Wet	Tweedie	*	**	*
6.7-9.5 mm Wet	Tweedie	***		
4.7-6.7 mm Wet	Tweedie	***		
3.4-4.7 mm Wet	Tweedie	***		
2.0-3.4 mm Wet	Tweedie	***		
>2.0 mm Wet	Tweedie	***	*	
ΔMWD	Gaussian			
ΔGMD	Tweedie	***		
WSAR	Gaussian			
R <sub>&lt;2 mm</sub>	Gaussian	***	*	

### **Data availability**

The data that support the findings of this study are available from the corresponding author upon request.

### **Code availability**

450 The code that supports the findings of this study are available from the corresponding author upon request.

### **Author contribution**

TS, DW, CWM, OS, and StS conceptualized the study. OS, KW, and NRM collected the soil samples. StS collected and analyzed the biocrust samples, and NRM analyzed the soil samples. NRM performed the analyses and prepared the manuscript.

### **455 Competing interests**

The authors declare that they have no conflict of interest.

### **Acknowledgments**

We are deeply grateful to the students, technical assistants, and colleagues who helped in the field and laboratory phases. A special thanks to Martin Nebel and Sonja Thielen for their help in classifying bryophytes and lichens. 460 Oliver Burkhardt (GFZ German Research Centre for Geosciences) and Franziska Steiner (Technical University of Munich) for their support in the field. Hugo Pérez for his help and experience in the soil physics laboratory of the Universidad de Chile. We are grateful to the Chilean National Forest Corporation (CONAF) and Sucesión Gálvez Muñoz, who provided access to the study sites. The study was funded by the German Science Foundation DFGSPP 1803 (EarthShape; [www.earthshape.net](http://www.earthshape.net)).

465 **References**

- Abed, R. M. M., Tamm, A., Hassenrück, C., Al-Rawahi, A. N., Rodríguez-Caballero, E., Fiedler, S., Maier, S., and Weber, B.: Habitat-dependent composition of bacterial and fungal communities in biological soil crusts from Oman, *Scientific Reports*, 9, 6468, <https://doi.org/10.1038/s41598-019-42911-6>, 2019.
- Allison, L. E. and Richards, L. A.: Diagnosis and improvement of saline and alkali soils, 60, *Soil and Water*  
470 *Conservative Research Branch, Agricultural Research Service*1954.
- Armesto, J. J., Arroyo, M. T., and Hinojosa Opazo, L.: The Mediterranean environment of central Chile, <https://doi.org/10.1093/oso/9780195313413.003.0019>, 2007.
- Bachar, A., Al-Ashhab, A., Soares, M. I. M., Sklarz, M. Y., Angel, R., Ungar, E. D., and Gillor, O.: Soil Microbial  
475 *Abundance and Diversity Along a Low Precipitation Gradient*, *Microbial Ecology*, 60, 453-461, <https://doi.org/10.1007/s00248-010-9727-1>, 2010.
- Barger, N. N., Weber, B., Garcia-Pichel, F., Zaady, E., and Belnap, J.: Patterns and controls on nitrogen cycling  
of biological soil crusts, in: *Biological soil crusts: an organizing principle in drylands*, Springer, 257-285, [https://doi.org/10.1007/978-3-319-30214-0\\_14](https://doi.org/10.1007/978-3-319-30214-0_14), 2016.
- Baumann, K., Jung, P., Samolov, E., Lehnert, L. W., Büdel, B., Karsten, U., Bendix, J., Achilles, S., Schermer, M.,  
480 *Matus, F., Osés, R., Osses, P., Morshedizad, M., Oehlschläger, C., Hu, Y., Klysubun, W., and Leinweber, P.:*  
*Biological soil crusts along a climatic gradient in Chile: Richness and imprints of phototrophic*  
*microorganisms in phosphorus biogeochemical cycling*, *Soil Biology and Biochemistry*, 127, 286-300,  
<https://doi.org/10.1016/j.soilbio.2018.09.035>, 2018.
- Belnap, J. and Büdel, B.: Biological soil crusts as soil stabilizers, in: *Biological soil crusts: an organizing*  
485 *principle in drylands*, Springer, 305-320, [https://doi.org/10.1007/978-3-319-30214-0\\_16](https://doi.org/10.1007/978-3-319-30214-0_16), 2016.
- Belnap, J. and Lange, O. L.: Biological soil crusts: structure, function, and management, 1, *Ecological Studies*,  
Springer, Berlin Heidelberg, <https://doi.org/10.1007/978-3-642-56475-8>, 2003.
- Belnap, J., Weber, B., and Büdel, B.: Biological soil crusts as an organizing principle in drylands, in: *Biological*  
490 *soil crusts: an organizing principle in drylands*, Springer, 3-13, [https://doi.org/10.1007/978-3-319-30214-0\\_1](https://doi.org/10.1007/978-3-319-30214-0_1), 2016.
- Bernhard, N., Moskwa, L.-M., Schmidt, K., Oeser, R. A., Aburto, F., Bader, M. Y., Baumann, K., von  
Blanckenburg, F., Boy, J., van den Brink, L., Brucker, E., Büdel, B., Canessa, R., Dippold, M. A., Ehlers, T. A.,  
Fuentes, J. P., Godoy, R., Jung, P., Karsten, U., Köster, M., Kuzyakov, Y., Leinweber, P., Neidhardt, H., Matus, F.,  
495 *Mueller, C. W., Oelmann, Y., Osés, R., Osses, P., Paulino, L., Samolov, E., Schaller, M., Schmid, M., Spielvogel,*  
*S., Spohn, M., Stock, S., Stroncik, N., Tielbörger, K., Übernickel, K., Scholten, T., Seguel, O., Wagner, D., and*  
*Kühn, P.:* Pedogenic and microbial interrelations to regional climate and local topography: New insights  
from a climate gradient (arid to humid) along the Coastal Cordillera of Chile, *Catena*, 170, 335-355,  
<https://doi.org/10.1016/j.catena.2018.06.018>, 2018.
- Bowker, M. A., Belnap, J., Büdel, B., Sannier, C., Pietrasiak, N., Eldridge, D. J., and Rivera-Aguilar, V.: Controls  
500 *on Distribution Patterns of Biological Soil Crusts at Micro- to Global Scales*, in: *Biological Soil Crusts: An*  
*Organizing Principle in Drylands*, edited by: Weber, B., Büdel, B., and Belnap, J., Springer International  
Publishing, Cham, 173-197, [https://doi.org/10.1007/978-3-319-30214-0\\_10](https://doi.org/10.1007/978-3-319-30214-0_10), 2016.
- Bowker, M. A., Maestre, F. T., Eldridge, D., Belnap, J., Castillo-Monroy, A., Escolar, C., and Soliveres, S.:  
505 *Biological soil crusts (biocrusts) as a model system in community, landscape and ecosystem ecology,*  
*Biodiversity and Conservation*, 23, 1619-1637, <https://doi.org/10.1007/s10531-014-0658-x>, 2014.
- Brust, G. E.: Chapter 9 - Management Strategies for Organic Vegetable Fertility, in: *Safety and Practice for*  
*Organic Food*, edited by: Biswas, D., and Micallef, S. A., Academic Press, 193-212,  
<https://doi.org/10.1016/B978-0-12-812060-6.00009-X>, 2019.
- Chamizo, S., Belnap, J., Eldridge, D. J., Cantón, Y., and Issa, O. M.: The role of biocrusts in arid land hydrology,  
510 *Biological soil crusts: An organizing principle in drylands*, 321-346, [https://doi.org/10.1007/978-3-319-30214-0\\_17](https://doi.org/10.1007/978-3-319-30214-0_17), 2016.
- Chen, J., Blume, H.-P., and Beyer, L.: Weathering of rocks induced by lichen colonization — a review,  
*CATENA*, 39, 121-146, [https://doi.org/10.1016/S0341-8162\(99\)00085-5](https://doi.org/10.1016/S0341-8162(99)00085-5), 2000.
- Chen, N., Wang, X., Zhang, Y., Yu, K., and Zhao, C.: Ecohydrological effects of biological soil crust on the  
515 *vegetation dynamics of restoration in a dryland ecosystem*, *Journal of Hydrology*, 563, 1068-1077,  
<https://doi.org/10.1016/j.jhydrol.2018.06.076>, 2018.
- Chen, N., Yu, K., Jia, R., Teng, J., and Zhao, C.: Biocrust as one of multiple stable states in global drylands,  
*Science Advances*, 6, eaay3763, <https://doi.org/10.1126/sciadv.aay3763>, 2020.
- Colesie, C., Green, T. A., Haferkamp, I., and Buedel, B.: Habitat stress initiates changes in composition, CO 2  
520 *gas exchange and C-allocation as life traits in biological soil crusts*, *The ISME journal*, 8, 2104-2115,  
<https://doi.org/10.1038/ismej.2014.47>, 2014.

- Corwin, D. L.: Climate change impacts on soil salinity in agricultural areas, *European Journal of Soil Science*, 72, 842-862, <https://doi.org/10.1111/ejss.13010>, 2021.
- 525 Cox, D. R.: Causality: Some Statistical Aspects, *Journal of the Royal Statistical Society. Series A (Statistics in Society)*, 155, 291-301, <https://doi.org/10.2307/2982962>, 1992.
- Cuvertino, J., Ardiles, V., Osorio, F., and Romero, X.: New records and additions to the Chilean bryophyte flora, 2012.
- 530 Drahorad, S. L., Steckenmesser, D., Felix-Henningsen, P., Lichner, L., and Rodný, M.: Ongoing succession of biological soil crusts increases water repellency—a case study on Arenosols in Sekule, Slovakia, *Biologia*, 68, 1089-1093, <https://doi.org/10.2478/s11756-013-0247-6>, 2013.
- Dunn, P. K.: Tweedie: Evaluation of Tweedie Exponential Family Models (2.3.0) [code], 2017.
- Elbert, W., Weber, B., Burrows, S., Steinkamp, J., Büdel, B., Andreae, M. O., and Pöschl, U.: Contribution of cryptogamic covers to the global cycles of carbon and nitrogen, *Nature Geoscience*, 5, 459-462, <https://doi.org/10.1038/ngeo1486>, 2012.
- 535 Eldridge, D. J., Zaady, E., and Shachak, M.: Infiltration through three contrasting biological soil crusts in patterned landscapes in the Negev, Israel, *CATENA*, 40, 323-336, [https://doi.org/10.1016/S0341-8162\(00\)00082-5](https://doi.org/10.1016/S0341-8162(00)00082-5), 2000.
- 540 Eldridge, D. J., Reed, S., Travers, S. K., Bowker, M. A., Maestre, F. T., Ding, J., Havrilla, C., Rodriguez-Caballero, E., Barger, N., Weber, B., Antoninka, A., Belnap, J., Chaudhary, B., Faist, A., Ferrenberg, S., Huber-Sannwald, E., Malam Issa, O., and Zhao, Y.: The pervasive and multifaceted influence of biocrusts on water in the world's drylands, *Global Change Biology*, 26, 6003-6014, <https://doi.org/10.1111/gcb.15232>, 2020.
- Ewing, S. A., Sutter, B., Owen, J., Nishiizumi, K., Sharp, W., Cliff, S. S., Perry, K., Dietrich, W., McKay, C. P., and Amundson, R.: A threshold in soil formation at Earth's arid-hyperarid transition, *Geochimica et Cosmochimica Acta*, 70, 5293-5322, <https://doi.org/10.1016/j.gca.2006.08.020>, 2006.
- 545 Fariña, V. and Ardiles, M.: Flora no vascular de la Región de Arica y Parinacota, Chile: nuevos registros y consideraciones biogeográficas, 2014.
- Fischer, T., Yair, A., and Veste, M.: Microstructure and hydraulic properties of biological soil crusts on sand dunes: a comparison between arid and temperate climates, *Biogeosciences Discussions*, 9, 12711-12734, <https://doi.org/10.5194/bgd-9-12711-2012>, 2012.
- 550 Fischer, T., Yair, A., Veste, M., and Geppert, H.: Hydraulic properties of biological soil crusts on sand dunes studied by <sup>13</sup>C-CP/MAS-NMR: A comparison between an arid and a temperate site, *Catena*, 110, 155-160, <https://doi.org/10.1016/j.catena.2013.06.002>, 2013.
- Galloway, D. J. and Quilhot, W.: Checklist of Chilean lichen-forming and lichenicolous fungi, *Gayana botanica*, 55, 111-185, 2009.
- 555 Gao, L., Bowker, M. A., Xu, M., Sun, H., Tuo, D., and Zhao, Y.: Biological soil crusts decrease erodibility by modifying inherent soil properties on the Loess Plateau, China, *Soil Biology and Biochemistry*, 105, 49-58, <https://doi.org/10.1016/j.soilbio.2016.11.009>, 2017.
- Garcia-Pichel, F., Felde, V. J. M. N. L., Drahorad, S. L., and Weber, B.: Microstructure and weathering processes within biological soil crusts, in: *Biological soil crusts: an organizing principle in drylands*, Springer, 237-255, [https://doi.org/10.1007/978-3-319-30214-0\\_13](https://doi.org/10.1007/978-3-319-30214-0_13), 2016.
- 560 Gardner, W. R.: Representation of Soil Aggregate-Size Distribution by a Logarithmic-Normal Distribution, *Soil Science Society of America Journal*, 20, 151-153, <https://doi.org/10.2136/sssaj1956.03615995002000020003x>, 1956.
- 565 Goebes, P., Seitz, S., Kühn, P., Li, Y., Niklaus, P. A., Oheimb, G. v., and Scholten, T.: Throughfall kinetic energy in young subtropical forests: Investigation on tree species richness effects and spatial variability, *Agricultural and Forest Meteorology*, 213, 148-159, <https://doi.org/10.1016/j.agrformet.2015.06.019>, 2015.
- Govers, G.: Selectivity and transport capacity of thin flows in relation to rill erosion, *Catena*, 12, 35-49, [https://doi.org/10.1016/S0341-8162\(85\)80003-5](https://doi.org/10.1016/S0341-8162(85)80003-5), 1985.
- 570 Grote, E. E., Belnap, J., Housman, D. C., and Sparks, J. P.: Carbon exchange in biological soil crust communities under differential temperatures and soil water contents: implications for global change, *Global Change Biology*, 16, 2763-2774, <https://doi.org/10.1111/j.1365-2486.2010.02201.x>, 2010.
- Hartge, K. H. and Horn, R.: Die physikalische Untersuchung von Böden, *Journal of Plant Nutrition and Soil Science*, 3, 454, 2009.
- 575 Hatch, T. and Choate, S. P.: Statistical description of the size properties of non uniform particulate substances, *Journal of the Franklin Institute*, 207, 369-387, [https://doi.org/10.1016/S0016-0032\(29\)91451-4](https://doi.org/10.1016/S0016-0032(29)91451-4), 1929.
- He, S.: A checklist of the mosses of Chile, *The Journal of the Hattori Botanical Laboratory*, 85, 103-189, 1998.

- 580 Hooper, D. U. and Johnson, L.: Nitrogen limitation in dryland ecosystems: Responses to geographical and temporal variation in precipitation, *Biogeochemistry*, 46, 247-293, <https://doi.org/10.1023/A:1006145306009>, 1999.
- Hulton, N. R. J., Purves, R. S., McCulloch, R. D., Sugden, D. E., and Bentley, M. J.: The Last Glacial Maximum and deglaciation in southern South America, *Quaternary Science Reviews*, 21, 233-241, [https://doi.org/10.1016/S0277-3791\(01\)00103-2](https://doi.org/10.1016/S0277-3791(01)00103-2), 2002.
- 585 Jahn, R., Blume, H., Asio, V., Spaargaren, O., and Schad, P.: Guidelines for soil description, FAO2006.
- Jung, P., Baumann, K., Emrich, D., Springer, A., Felde, V. J. M. N. L., Dultz, S., Baum, C., Frank, M., Büdel, B., and Leinweber, P.: Lichens Bite the Dust – A Bioweathering Scenario in the Atacama Desert, *iScience*, 23, 101647, <https://doi.org/10.1016/j.isci.2020.101647>, 2020a.
- 590 Jung, P., Emrich, D., Briegel-Williams, L., Schermer, M., Weber, L., Baumann, K., Colesie, C., Clerc, P., Lehnert, L. W., Achilles, S., Bendix, J., and Büdel, B.: Ecophysiology and phylogeny of new terricolous and epiphytic chlorolichens in a fog oasis of the Atacama Desert, *MicrobiologyOpen*, 8, e894, <https://doi.org/10.1002/mbo3.894>, 2019.
- Jung, P., Baumann, K., Lehnert, L. W., Samolov, E., Achilles, S., Schermer, M., Wraase, L. M., Eckhardt, K.-U., Bader, M. Y., Leinweber, P., Karsten, U., Bendix, J., and Büdel, B.: Desert breath—How fog promotes a novel type of soil biocenosis, forming the coastal Atacama Desert’s living skin, *Geobiology*, 18, 113-124, <https://doi.org/10.1111/gbi.12368>, 2020b.
- 595 Kemper, W. and Rosenau, R.: Aggregate stability and size distribution, *Methods of soil analysis: Part 1 Physical and mineralogical methods*, 5, 425-442, 1986.
- Kleber, M., Sollins, P., and Sutton, R.: A conceptual model of organo-mineral interactions in soils: self-assembly of organic molecular fragments into zonal structures on mineral surfaces, *Biogeochemistry*, 85, 9-24, <https://doi.org/10.1007/s10533-007-9103-5>, 2007.
- 600 Köhn, M.: Korngrößenanalyse vermittels Pipettanalyse, *Tonindustrie-Zeitung*, 53, 729-731, 1929.
- Lange, O. L. and Belnap, J.: How Biological Soil Crusts Became Recognized as a Functional Unit: A Selective History, in: *Biological Soil Crusts: An Organizing Principle in Drylands*, edited by: Weber, B., Büdel, B., and Belnap, J., Springer International Publishing, Cham, 15-33, 10.1007/978-3-319-30214-0\_2, 2016.
- 605 Lewin, R. A.: EXTRACELLULAR POLYSACCHARIDES OF GREEN ALGAE, *Canadian Journal of Microbiology*, 2, 665-672, 10.1139/m56-079, 1956.
- Li, J., Okin, G. S., Alvarez, L., and Epstein, H.: Effects of wind erosion on the spatial heterogeneity of soil nutrients in two desert grassland communities, *Biogeochemistry*, 88, 73-88, <https://doi.org/10.1007/s10533-008-9195-6>, 2008.
- 610 Liang, T., Shi, X., Guo, T., and Peng, S.: Arbuscular mycorrhizal fungus mediate changes in mycorrhizosphere soil aggregates, *Agricultural Sciences*, 6, 1455, <https://doi.org/10.4236/as.2015.612141>, 2015.
- Lichner, L., Holko, L., Zhukova, N., Schacht, K., Rajkai, K., Fodor, N., and Sándor, R.: Plants and biological soil crust influence the hydrophysical parameters and water flow in an aeolian sandy soil/Vplyv rastlín a biologického pôdneho pokryvu na hydrofyzikálne parametre a prúdenie vody v piesočnatej pôde, *Journal of Hydrology and Hydromechanics*, 60, 309-318, <https://doi.org/10.2478/v10098-012-0027-y>, 2012.
- 615 Lightowlers, P.: A synoptic flora of South Georgian mosses: *Tortula*, *Scientific reports-British Antarctic Survey*, 41-77, 1985.
- Liu, M.-Y., Chang, Q.-R., Qi, Y.-B., Liu, J., and Chen, T.: Aggregation and soil organic carbon fractions under different land uses on the tableland of the Loess Plateau of China, *Catena*, 115, 19-28, <https://doi.org/10.1016/j.catena.2013.11.002>, 2014.
- 620 Loaiza Puerta, V., Pujol Pereira, E. I., Wittwer, R., van der Heijden, M., and Six, J.: Improvement of soil structure through organic crop management, conservation tillage and grass-clover ley, *Soil and Tillage Research*, 180, 1-9, <https://doi.org/10.1016/j.still.2018.02.007>, 2018.
- 625 Maestre, F. T., Escolar, C., de Guevara, M. L., Quero, J. L., Lázaro, R., Delgado-Baquerizo, M., Ochoa, V., Berdugo, M., Gozalo, B., and Gallardo, A.: Changes in biocrust cover drive carbon cycle responses to climate change in drylands, *Global Change Biology*, 19, 3835-3847, <https://doi.org/10.1111/gcb.12306>, 2013.
- Malam Issa, O., Trichet, J., Défarge, C., Couté, A., and Valentin, C.: Morphology and microstructure of microbiotic soil crusts on a tiger bush sequence (Niger, Sahel), *CATENA*, 37, 175-196, [https://doi.org/10.1016/S0341-8162\(99\)00052-1](https://doi.org/10.1016/S0341-8162(99)00052-1), 1999.
- 630 Mazurak, A. P.: Effect of gaseous phase on water-stable synthetic aggregates, *Soil science*, 69, 135-148, <https://doi.org/10.1097/00010694-195002000-00005>, 1950.
- Mutz, S. G., Ehlers, T. A., Werner, M., Lohmann, G., Stepanek, C., and Li, J.: Estimates of late Cenozoic climate change relevant to Earth surface processes in tectonically active orogens, *Earth Surface Dynamics*, 6, 271-301, <https://doi.org/10.5194/esurf-6-271-2018>, 2018.
- 635 Oades, J. M. and Waters, A. G.: Aggregate hierarchy in soils, *Soil Research*, 29, 815-828, <https://doi.org/10.1071/SR9910815>, 1991.

- Ochyra, R. and Matteri, C. M.: Flora criptogámica de Tierra del Fuego: Bryophyta, musci: Amblystegiaceae, Estudio Sigma2001.
- 640 Oeser, R. A., Stroncik, N., Moskwa, L.-M., Bernhard, N., Schaller, M., Canessa, R., van den Brink, L., Köster, M., Brucker, E., and Stock, S.: Chemistry and microbiology of the Critical Zone along a steep climate and vegetation gradient in the Chilean Coastal Cordillera, *Catena*, 170, 183-203, <https://doi.org/10.1016/j.catena.2018.06.002>, 2018.
- 645 Oliver, M. J., Velten, J., and Mishler, B. D.: Desiccation Tolerance in Bryophytes: A Reflection of the Primitive Strategy for Plant Survival in Dehydrating Habitats?1, *Integrative and Comparative Biology*, 45, 788-799, <https://doi.org/10.1093/ich/45.5.788>, 2005.
- Orchard, V. A. and Cook, F. J.: Relationship between soil respiration and soil moisture, *Soil Biology and Biochemistry*, 15, 447-453, [https://doi.org/10.1016/0038-0717\(83\)90010-X](https://doi.org/10.1016/0038-0717(83)90010-X), 1983.
- 650 Porada, P., Weber, B., Elbert, W., Pöschl, U., and Kleidon, A.: Estimating impacts of lichens and bryophytes on global biogeochemical cycles, *Global Biogeochemical Cycles*, 28, 71-85, <https://doi.org/10.1002/2013GB004705>, 2014.
- Rillig, M. C.: Arbuscular mycorrhizae, glomalin, and soil aggregation, *Canadian Journal of Soil Science*, 84, 355-363, <https://doi.org/10.4141/s04-003>, 2004.
- 655 Rosenbaum, P. R.: Sensitivity analysis in observational studies, *Encyclopedia of statistics in behavioral science*, <https://doi.org/10.1002/0470013192.bsa606>, 2005.
- Rosentreter, R., Eldridge, D. J., Westberg, M., Williams, L., and Grube, M.: Structure, composition, and function of biocrust lichen communities, in: *Biological soil crusts: An organizing principle in drylands*, Springer, 121-138, [https://doi.org/10.1007/978-3-319-30214-0\\_7](https://doi.org/10.1007/978-3-319-30214-0_7), 2016.
- 660 Rundel, P. W. and Weisser, P. J.: La Campana, a new national park in central Chile, *Biological Conservation*, 8, 35-46, [https://doi.org/10.1016/0006-3207\(75\)90077-4](https://doi.org/10.1016/0006-3207(75)90077-4), 1975.
- Samolov, E., Baumann, K., Büdel, B., Jung, P., Leinweber, P., Mikhailyuk, T., Karsten, U., and Glaser, K.: Biodiversity of Algae and Cyanobacteria in Biological Soil Crusts Collected Along a Climatic Gradient in Chile Using an Integrative Approach, *Microorganisms*, 8, 1047, 2020.
- 665 Scholten, T. and Seitz, S.: Soil Erosion and Land Degradation, *Soil Systems*, 3, 68, <https://doi.org/10.3390/soilsystems3040068>, 2019.
- Seitz, S., Goebes, P., Song, Z., Bruelheide, H., Härdtle, W., Kühn, P., Li, Y., and Scholten, T.: Tree species and functional traits but not species richness affect interrill erosion processes in young subtropical forests, *SOIL*, 2, 49-61, <https://doi.org/10.5194/soil-2-49-2016>, 2016.
- 670 Seitz, S., Nebel, M., Goebes, P., Käppeler, K., Schmidt, K., Shi, X., Song, Z., Webber, C. L., Weber, B., and Scholten, T.: Bryophyte-dominated biological soil crusts mitigate soil erosion in an early successional Chinese subtropical forest, *Biogeosciences*, 14, 5775-5788, <https://doi.org/10.5194/bg-14-5775-2017>, 2017.
- Six, J., Bossuyt, H., Degryze, S., and Denef, K.: A history of research on the link between (micro)aggregates, soil biota, and soil organic matter dynamics, *Soil and Tillage Research*, 79, 7-31, <https://doi.org/10.1016/j.still.2004.03.008>, 2004.
- 675 Six, J., Paustian, K., Elliott, E. T., and Combrink, C.: Soil Structure and Organic Matter I. Distribution of Aggregate-Size Classes and Aggregate-Associated Carbon, *Soil Science Society of America Journal*, 64, 681-689, <https://doi.org/10.2136/sssaj2000.642681x>, 2000.
- 680 Slessarev, E. W., Lin, Y., Bingham, N. L., Johnson, J. E., Dai, Y., Schimel, J. P., and Chadwick, O. A.: Water balance creates a threshold in soil pH at the global scale, *Nature*, 540, 567-569, <https://doi.org/10.1038/nature20139>, 2016.
- Steven, B., Gallegos-Graves, L. V., Belnap, J., and Kuske, C. R.: Dryland soil microbial communities display spatial biogeographic patterns associated with soil depth and soil parent material, *FEMS Microbiology Ecology*, 86, 101-113, <https://doi.org/10.1111/1574-6941.12143>, 2013.
- 685 Team, R. C., Team, R. C. (Ed.): *R: A language and environment for statistical computing*, R Foundation for Statistical Computing, Vienna, Austria, 2 pp.2018.
- Thielen, S., Gall, C., Ebner, M., Nebel, M., Scholten, T., and Seitz, S.: Water's path from moss to soil: A multi-methodological study on water absorption and evaporation of soil-moss combinations, *Journal of Hydrology and Hydromechanics*, Accepted, <http://dx.doi.org/10.2478/johh-2021-0021>, 2021.
- 690 Totsche, K. U., Amelung, W., Gerzabek, M. H., Guggenberger, G., Klumpp, E., Knief, C., Lehndorff, E., Mikutta, R., Peth, S., Prechtel, A., Ray, N., and Kögel-Knabner, I.: Microaggregates in soils, *Journal of Plant Nutrition and Soil Science*, 181, 104-136, <https://doi.org/10.1002/jpln.201600451>, 2018.
- Van Bavel, C.: Mean weight-diameter of soil aggregates as a statistical index of aggregation, *Soil Science Society of America Journal*, 14, 20-23, <https://doi.org/10.2136/sssaj1950.036159950014000C0005x>, 1950.

- 695 Wagner, S., Cattle, S. R., and Scholten, T.: Soil-aggregate formation as influenced by clay content and organic-matter amendment, *Journal of Plant Nutrition and Soil Science*, 170, 173-180, <https://doi.org/10.1002/jpln.200521732>, 2007.
- Whitney, K. M., Vivoni, E. R., Duniway, M. C., Bradford, J. B., Reed, S. C., and Belnap, J.: Ecohydrological role of biological soil crusts across a gradient in levels of development, *Ecohydrology*, 10, e1875, <https://doi.org/10.1002/eco.1875>, 2017.
- 700 Wickham, H.: *ggplot2: Elegant Graphics for Data Analysis*, Use R!, Springer International Publishing, <https://doi.org/10.1007/978-3-319-24277-4>, 2016.
- Zhang, Z.-S., Song, X.-L., Lu, X.-G., and Xue, Z.-S.: Ecological stoichiometry of carbon, nitrogen, and phosphorus in estuarine wetland soils: influences of vegetation coverage, plant communities, geomorphology, and seawalls, *Journal of Soils and Sediments*, 13, 1043-1051, <https://doi.org/10.1007/s11368-013-0693-3>, 2013.
- 705