

Whole soil warming decreases abundance and modifies community structure of microorganisms in subsoil but not in surface soil

Cyrill U. Zosso¹, Nicholas O.E. Ofiti¹, Jennifer L. Soong², Emily F. Solly^{1,3}, Margaret S. Torn², Arnaud Huguet⁴, Guido L.B. Wiesenberg¹ and Michael W.I. Schmidt¹

Formatted: Superscript

5 ¹Department of Geography, University of Zurich, Zurich, Switzerland

²Climate and Ecosystem Science Division, Lawrence Berkeley National Laboratory, Berkeley, CA, USA

³Current address: Group for Sustainable Agroecosystems, Department of Environmental Systems Science, ETH Zurich, Zurich, Switzerland

Formatted: Not Superscript/ Subscript

⁴Sorbonne Université, CNRS, EPHE, PSL, UMR METIS, Paris, France

10 Correspondence to: Cyrill U. Zosso (cyrill.zosso@geo.uzh.ch)

Abstract. The microbial community composition in subsoils remains understudied and it is largely unknown whether subsoil microorganisms show a similar response to global warming as do microorganisms at the soil surface. Since microorganisms are key drivers of soil organic carbon decomposition, this knowledge gap causes uncertainty in predictions of future carbon cycling in the subsoil carbon pool (>50 % of the soil organic carbon stocks are below 30 cm soil depth).

15 In the Blodgett forest field warming experiment (California, USA) we investigated how +4 °C warming the whole soil profile to 100 cm soil depth for 4.5 years has affected the abundance and community structure of microorganisms. We used proxies for bulk microbial biomass carbon (MBC) and functional microbial groups based on lipid biomarkers, such as phospholipid fatty acids (PLFAs) and branched glycerol dialkyl glycerol tetraethers (brGDGTs). With depths, microbial biomass decreased and community composition changed. Our results show that the concentration of PLFAs decreased with

Deleted: M

Deleted: with depth

20 warming in the subsoil (below 30 cm) by 28 %, but was not affected in the topsoil. Phospholipid fatty acid concentrations changed in concert with soil organic carbon. The microbial community response to warming was depth dependent. The relative abundance of actinobacteria increased in warmed subsoil, and Gram+ bacteria in subsoils adapted their cell-membrane structure to warming induced stress, as indicated by the ratio of anteiso to iso branched PLFAs. Our results show

Deleted: gram

Formatted: Font: Not Italic

25 These microbial responses could be explained by the observed decrease in subsoil organic carbon concentrations in the warmed plots. A decrease in microbial abundance in warmed subsoils might reduce the magnitude of the respiration response over time. The shift in the subsoil microbial community towards more actinobacteria might disproportionately enhance degradation of previously stable subsoil carbon, as this group is able to metabolize complex carbon sources.

1 Introduction

30 Soil temperatures are predicted to increase at all soil depths in near synchrony with air temperatures under global climate change (Soong et al., 2020a). Global model simulations predict a likely increase of air temperatures between 2.6-4.8 °C by

Deleted: Concentration driven projections of global air temperatures indicate

Deleted: of

2100 under representative concentration pathway 8.5 (IPCC, 2013). It remains uncertain how this temperature increase will affect the soil organic carbon (SOC) pool. Soil organic carbon contains two to three times the amount of carbon present in the atmosphere (SOC ~ 1500-2400 PgC) (IPCC, 2013) and subsoils (below 30 cm soil depth) store around 50 % of the total SOC (Jobbagy and Jackson, 2000). Microorganisms are key players in the SOC cycle, but in subsoils there still exist large uncertainties on how the microbial community will respond to warming (Jansson and Hofmockel, 2020). Environmental constraints for microorganisms are different in subsoils and topsoils, including plant inputs, SOC availability and stabilization processes, soil moisture or spatial heterogeneity (Rumpel and Kögel-Knabner, 2011). These constraints in subsoils generally lead to less microbial biomass and a microbial community which is adapted to a lower carbon availability (Brewer et al., 2019; Fierer et al., 2003b). Thus, topsoil and subsoil microbial communities may respond differently to warming, with unknown effects on subsoil SOC stocks.

So far only a few field studies have been conducted to test the temperature sensitivity of subsoil microbial activity *in situ* (Hicks Pries et al., 2017; Nottingham et al., 2020), whereas there have been many incubation and mesocosm studies (e.g. Bai et al., 2019; Fierer et al., 2003a; Lin et al., 2018). The latter indicate that subsoil respiration is equally or more sensitive to warming compared to topsoils (Bai et al., 2019; Fierer et al., 2003a; Lin et al., 2018), consistent with *in situ* observations of field warming experiments (Hicks Pries et al., 2017; Nottingham et al., 2020). The underlying microbial processes in subsoils are largely unexplored. To the best of our knowledge only Zhang et al. (2015) investigated how *in situ* warming for several years affected subsoil microbial biomass and community structure in a grassland experiment. They reported that warming increased microbial biomass throughout the whole soil profile and observed a depth-specific change in the microbial community structure (Zhang et al., 2015). In topsoils, microbial abundance tends to respond to warming differently depending on the ecosystem (Chen et al., 2015). Consequently, data from non-grassland ecosystems is needed to see whether the responses reported by Zhang et al. (2015) can be confirmed at other sites.

Processes controlling the microbial response to warming are still subject to intense scientific debate (Walker et al., 2018). An interplay of acclimation and substrate depletion has been proposed to control the microbial response to warming (Melillo et al., 2017; Pold et al., 2017; Walker et al., 2018). Acclimation to warming encompasses physiological adaptations of individual microorganisms and shifts in the microbial community composition (Bradford et al., 2008). Substrate depletion on the other hand is a consequence of increased microbial activity with warming, which causes carbon limitation and in turn negatively affects microbial processes (Kirschbaum, 2004). But how these processes control the warming response of microorganisms in subsoils remains largely unexplored until now.

We can assess microbial biomass and functional community composition using several parameters. Microbial biomass carbon (MBC) quantified by chloroform fumigation extraction is a proxy for overall microbial biomass (Vance et al., 1987), but does not yield any information on the microbial community composition. Phospholipid fatty acids (PLFAs) are microbial

Commented [CZ1]: According to the guidelines on the SOIL journal homepage this seems to be correct (ordered according to the second authors name)

Deleted: related

75 membrane lipids that can be used to quantify microbial biomass, but also to describe the microbial community composition at a low taxonomic resolution (Willers et al., 2015). Furthermore, ratios among specific PLFAs have been used as indicators of environmental stress in soil (Wixon and Balsler, 2013). For example, the ratio of *anteiso* to *iso* branched PLFAs is used as an indicator of a physiological adaptation of the microbial membrane of Gram positive (Gram+) bacteria to stress, among others caused by changes in temperature (Wixon and Balsler, 2013). Adjusting the abundance of these compounds in their membrane helps microorganisms to control the fluidity of the membrane to maintain their activity under changing environmental conditions (Hall et al., 2010). We chose PLFA analysis over techniques with a higher resolution because of the precision between replicates and the high statistical power in differentiating experimental treatment effects (Ramsey et al., 2006). Core lipids of branched glycerol dialkyl glycerol tetraethers (brGDGTs) are an independent and complementary molecular marker that largely represents microbial necromass (Gocke et al., 2017). BrGDGTs generally have a longer turn over time as compared to the faster cycling PLFAs (Kindler et al., 2009; Weijers et al., 2010), giving a more time integrated signal of microbial abundance. Our first observations from the study site indicate that there might be less microbial necromass in warmed plots, but relatively more microorganism derived fatty acids as compared to plant derived fatty acids especially in the subsoil below 50 cm (Ofiti et al., 2021). Thus, we used brGDGTs as a complementary proxy to explore potential changes in microbial necromass. This combination of molecular proxies for microbial abundance has not been explored so far in the context of manipulative soil warming experiments.

Deleted: gram

Deleted: gram

Deleted: can also be used to quantify microbial abundance.

Deleted: The brGDGTs

Deleted: on the order of decades

Deleted:), whereas PLFAs cycle much faster (Kindler et al., 2009

Deleted: The extracted core brGDGTs represent 10-20 % living biomass and the rest comes from microbial necromass (Gocke et al., 2017).

90 In this study, we make use of a soil warming experiment that warms the soils by +4 °C above ambient temperature down to 1 m depth at the University of California Blodgett Experimental Forest (Sierra Nevada, CA). We quantified how a temperature increase throughout the soil profile influenced the microbial biomass and community structure, using microbial biomarkers.

Our research was guided by the following three hypotheses:

95 First, we hypothesized that warming would lead to more microbial biomass in top- and subsoils. Warming increased soil respiration at all depths at the study site (Hicks Pries et al., 2017; Soong et al., 2021), which might be partially reflected in more microbial biomass. This would be in line with findings that in topsoil microbial biomass generally increases over the first years of soil warming, despite microbial biomass in forest soils being less responsive compared to other ecosystems (Chen et al., 2015). Second, we hypothesized that microbial necromass as assessed by brGDGTs will decrease despite the expectation that the microbial biomass will increase. This hypothesis is based on the observation that microorganism derived fatty acids were less abundant in warmed plots at our study site and that soil organic carbon was more decomposed (Ofiti et al., 2021). Thus, warming might accelerate microbial necromass turnover. Third, we hypothesized that warming-induced changes in the microbial community composition will be depth-dependent. As previously reported for soil profiles, we expect that the microbial community composition of top- and subsoils is also different at our site, because the subsoil microbial community is adapted to carbon scarcity and other environmental constraints (Brewer et al., 2019; Fierer et al., 2003b). A meta-analysis proposed that the abundance of actinobacteria increases with warming (Chen et al., 2015).

Deleted: We

Deleted: in press

Deleted: As previously reported for soil profiles we expect that the microbial community composition of top- and subsoils is also different at our site, because the subsoil microbial community is adapted to carbon scarcity and other environmental constraints (Brewer et al., 2019; Fierer et al., 2003b).

Deleted: W

Actinobacteria are relatively more abundant in subsoils compared to topsoils (Fierer et al., 2003b) and an increase of this group would affect the subsoil microbial community more as compared to the topsoil community.

2 Materials and methods

2.1 Experimental setup and sampling

A whole-soil warming experiment was initiated in 2013 at the University of California Blodgett Experimental Forest, Sierra Nevada, CA (120°39'40" W; 38°54'43" N) to study how soil warming affects biogeochemical cycles in a natural environment (Hicks Pries et al., 2017). The site is located in a Mediterranean climate with mean annual precipitation of 1660 mm and a mean annual air temperature of 12.5 °C. The soil was classified as Alfisol of granitic origin and has a developed O-horizon. The experiment is located in a coniferous forest with ponderosa pine (*Pinus ponderosa*), sugar pine (*Pinus lambertiana*), incense cedar (*Calocedrus decurrens*), white fir (*Abies concolor*) and douglas fir (*Pseudotsuga menziesii*) as dominant tree species. The experiment consists of three blocks, each containing a pair of circular control and warmed plots of 3 m diameter. ~~All plots are equipped with vertical steel pipes, which contain resistance heater cables and sand in warmed plots and sand only in control plots. Additionally, two rings of heating cables were buried at 5cm to account for surface heat loss. With this setup, temperature~~ was maintained at +4°C from 0.2-1 m and +2.6 °C above 0.2 m in warmed compared to control plots (Hicks Pries et al., 2017; Soong et al., 2021). ~~The temperature magnitude was slightly lower above 0.2 m due to surface heat loss.~~ Diurnal and seasonal temperature variations were considered depth-specifically (Hicks Pries et al., 2017; Soong et al., 2021). Soil samples were collected in April 2018 after 4.5 years of warming with a 4.78 cm diameter manual soil corer. Organic horizons were removed prior to sampling. Mineral soil samples were recovered sequentially in 10 cm increments down to 90 cm depth and stored at 4 °C for transportation to the laboratory. In the laboratory, samples were freeze-dried, sieved to 2 mm and fine roots were removed before conducting subsequent analyses. Carbon concentrations were measured on an elemental analyzer coupled to an isotope ratio mass spectrometer (EA-IRMS; Flash 2000-HT Plus, linked by ConFlo IV to Delta V Plus IRMS, Thermo Fisher Scientific, Inc.) on a ground subsample. The pH was measured on a dried subsample in 0.01 M CaCl₂. A second core was sampled from each plot using the same methods and stored at 4 °C until chloroform fumigation extraction was conducted during the week after sampling.

2.2 Microbial parameters

2.2.1 Microbial biomass carbon

Microbial biomass carbon (MBC) was analyzed using chloroform fumigation extraction, which is a method that measures the carbon released upon lysis of microbial cells (Vance et al., 1987). The extraction was conducted within one week after sampling on field moist soil, stored at 4 °C until processing. ~~Due to a limitation of sample material, the analysis was only~~ conducted on the 0-10, 10-20, 30-40, 50-60 and 80-90 cm depth increments, using 10 g of the field-moist soil. Microbial

Formatted: Don't adjust space between Latin and Asian text, Don't adjust space between Asian text and numbers

Formatted: Font: (Default) Times New Roman

Formatted: Font: (Default) Times New Roman

Formatted: Font: (Default) Times New Roman

Deleted: Temperature

Deleted: in press

Deleted: in press

Formatted: Font: (Default) Calibri, Font color: Custom Color(68,114,196), English (US)

Deleted: The

Deleted: was

biomass carbon was calculated as the difference in total organic carbon between subsamples fumigated with chloroform for five days prior to extraction with 0.05 M K₂SO₄ and subsamples directly extracted with 0.05 M K₂SO₄. Dissolved organic carbon was measured on a Shimadzu TOC-L (Shimadzu Scientific Instruments, Inc.) and calculated on a soil dry mass basis. A correction factor of 0.45 was used to account for carbon losses inherent to the method and make data comparable to previously published results (Vance et al., 1987). The difference in MBC between warmed and control plots was calculated as the difference between the warmed and control treatments normalized to the control plot within each of the three replicate paired blocks.

2.2.2 Phospholipid fatty acids

Analysis of PLFAs was performed following the method by Frostegård et al. (1991) with some modifications (Zosso and Wiesenberg, 2021). Briefly, we increased the amount of freeze-dried soil sample with soil depth, to account for the decreasing microbial biomass (from 3 g in the top soil to 12 g in deepest depth intervals). Using a solution of 1:2:0.8 (v/v/v) of chloroform : methanol : citric acid buffer, the extraction was repeated four times and the extract combined in a separation funnel. After addition of citric acid buffer and chloroform, the phases separated overnight and the organic phase was released thereafter. We added chloroform three more times and combined the organic phases. The extract was then separated in neutral-, glyco- and phospholipid fractions using a column with activated silica gel and the phospholipid fraction was methylated using boron trifluoride-methanol solution (Wiesenberg and Gocke, 2017). Prior to methylation deuterated eicosanoic acid (D₃₉C₂₀, Cambridge Isotope Laboratories, Inc.) was added as an internal standard for quantification to nmol g⁻¹ soil. Quantification was performed using a Gas Chromatograph (GC, 7890 B, Agilent Technologies, Inc.) equipped with a multimode inlet (MMI) and a flame ionization detector. External standard series of 24 fatty acid standards and sample measurements on a GC (6890 N, Agilent Technologies, Inc.) coupled to a mass spectrometer (5973 N, Agilent Technologies, Inc.) followed by comparison to the NIST and Wiley mass spectra library supported peak identification. Both GCs were equipped with J&W DB-5MS columns (Agilent Technologies, Inc.) with the following dimensions: 50 m length x 0.2 mm inner diameter x 0.32 µm film thickness. The GC oven and MMI temperature programs are given in the supplementary (Table A1).

For total abundance of PLFAs, saturated fatty acids (C_{14:0}, C_{15:0}, C_{16:0}, C_{17:0}, C_{18:0}) were included. They were not included in calculations of the relative abundances of microbial groups (mol%), because they are not specific for any microbial group and distorted some of the depth patterns. To assess the microbial community structure, the following grouping of PLFAs was used (Willers et al., 2015): ~~Gram~~ positive bacteria (~~Gram~~⁺; iC_{14:0}, aC_{14:0}, iC_{15:0}, aC_{15:0}, iC_{16:0}, aC_{16:0}, iC_{17:0}, aC_{17:0}), ~~Gram~~ negative bacteria (~~Gram~~⁻; C_{16:1*o*5*c*}, C_{16:1*o*7*c*}, C_{16:1*o*9*e*}, C_{18:1*o*5*c*}, C_{18:1*o*11*c*}, cyC_{17:0}, cyC_{19:0}), fungi (C_{18:2*o*6*c*}) and actinobacteria (10MeC_{16:0}, 10MeC_{18:0}). Microorganisms can also adapt their membrane composition in response to various stress factors, confounding physiological adaptations and changes in community structure (Wixon and Balsler, 2013). The ratio of *anteiso* to *iso* branched PLFAs ((aC_{14:0} + aC_{15:0} + aC_{16:0} + aC_{17:0}) / (iC_{14:0} + iC_{15:0} + iC_{16:0} + iC_{17:0})) can partly capture adaptations of the membrane composition within ~~Gram~~⁺ bacteria in response to stress, rather than changes in the community composition

Formatted: Not Superscript/ Subscript

Deleted: gram

Deleted: gram

Deleted: gram

Deleted: gram

Deleted: gram

(Hall et al., 2010; Wixon and Balsler, 2013). The difference in PLFAs between warmed and control plots was calculated as the difference between the warmed and control treatments normalized to the control plot within each of the three replicate paired blocks.

200 2.2.3 Branched glycerol dialkyl glycerol tetraethers

Samples were extracted using Soxhlet extraction with 93:7 (v/v) dichloromethane : methanol as described in Wiesenberg and Gocke (2017). The extract was then prepared for analysis of core lipid brGDGTs as described by Coffinet et al. (2014). Briefly, the samples were separated over a column of activated aluminum oxide in two fractions. Branched glycerol dialkyl glycerol tetraethers were separated using high performance liquid chromatography equipped with an automatic injector, 205 coupled with mass spectrometry with an atmospheric pressure chemical ionization source (HPLC-APCI-MS, Shimadzu LCMS 2020, Shimadzu Corp.). Two Hypersil Gold silica columns in tandem (150 mm × 2.1 mm, 1.9 μm; Thermo Finnigan, Inc.), thermally-controlled at 40 °C were used for brGDGT analysis, [as described in detail in Huguet et al. \(2019\)](#). Semi-quantification of brGDGTs was performed by comparing the integrated signal of the respective compound with the signal of a C₆ synthesized internal standard assuming their response factors to be identical (Huguet et al., 2013).

210 Roman numerals correspond to the different brGDGT structures presented in Fig. A1, where compounds denoted by an accent after the Roman numerals are 6-methyl isomers. The relative abundances of individual brGDGTs (weight%) were calculated by dividing individual compounds by the sum of all brGDGTs. The difference in brGDGTs between warmed and control plots was calculated as the difference between the warmed and control treatments normalized to the control plot within each of the three replicate paired blocks.

215 2.3 Data analysis

For all statistical analyses, R 3.6.3 (R Core Team, 2020) was used. We assessed normality, homoscedasticity and model fit using residual plots, Shapiro-Wilk test, Levene test and outlier tests. We log transformed data if we observed poor fit. Correlation and multiple regression analysis were conducted to test the relation between MBC, PLFA, brGDGT and carbon concentrations. To test how warming affected microbial abundance and community, mixed effect models were built using the *gl*s and *lme* functions in the *nlme* package. We used restricted maximum likelihood with the random effect block (n=3) and the fixed effects treatment, depth and their interaction. We used Akaike's information criterion (AIC) to test whether variance structures improved model fit. If we found significant treatment*depth interactions, [or upon visual inspection of the plots, the](#) model was run on a subset of depth increments. This is indicated by the specification of depth intervals included in the analysis. We reported results as significant at a level of $p < 0.05$.

Deleted: , we employed Post hoc analysis and the

Deleted: In all figures and tables, we show the middle point of the analyzed depth interval.

225

230 **3 Results**

3.1 Bulk parameters

The pH was lower with depth (LME, $p=0.02$, $F=3.04$) with values ranging from 5.3 ± 0.3 at 10-20 cm depth and 4.5 ± 0.4 at 80-90 cm depth in control plots (Table 1). The pH was not different between control and warmed plots (LME, $p=0.84$, $F=0.04$). Soil organic carbon concentrations were also lower with depth (LME, $p<0.01$, $F=55.92$) with values ranging from 71.3 ± 10.9 mg g⁻¹ soil at 0-10 cm to 3.1 ± 0.8 mg g⁻¹ soil at 80-90 cm depth in control plots (Table 1). Soil organic carbon concentrations were lower in warmed compared to control plots below 20 cm (LME, $p<0.01$, $F=15.17$) in the soil cores analyzed here and as described in more detail on replicated cores in Soong et al. (2021). Fine root concentrations did not change with depth, but were lower in warmed compared to control plots as described in Ofiti et al. (2021) (Table 1).

Table 1: pH, concentrations of soil organic carbon (SOC, mg g⁻¹ soil; Ofiti et al., 2021) and fine root mass (g m⁻², Ofiti et al., 2021) in control and warmed plots (mean± SE, n=3). More details on carbon concentrations on replicated cores in Soong et al. (2021).

Soil depth [cm]	pH in 0.01M CaCl ₂		SOC [mg g ⁻¹ soil]		Fine root mass [g m ⁻²]	
	Control	Warmed	Control	Warmed	Control	Warmed
0-10	-	-	71.3±10.9	60.4±6.7	111.5±32.2	92.9±18.6
10-20	5.3±0.3	5.1±0.2	32.5±8.6	53.2±18.6	232.3±56.5	185.8±37.2
20-30	5.2±0.3	4.9±0.2	23.3±7.8	14.5±3.2	167.3±0.0	204.4±37.2
30-40	4.9±0.4	4.9±0.3	13.2±3.9	7.1±1.3	223.0±0.0	130.1±37.2
40-50	4.7±0.4	4.7±0.1	7.5±1.5	6.1±0.4	185.8±49.2	130.1±49.2
50-60	4.6±0.4	4.6±0.1	4.7±1.1	3.7±1.0	92.9±18.6	92.9±18.6
60-70	4.6±0.4	4.0±0.3	5.0±0.2	2.5±0.4	130.1±74.3	92.9±18.6
70-80	4.4±0.5	4.6±0.1	6.8±3.5	2.3±0.2	167.3±32.2	89.2±22.3
80-90	4.5±0.4	4.5±0.1	3.1±0.8	2.2±0.1	111.5±0.0	65.0±24.6

3.2 Microbial biomass carbon

Microbial biomass carbon (MBC) concentrations declined with increasing depth, independent of treatment (LME, $p<0.01$, $F=8.21$). In the top 10 cm, concentrations were 727.6 ± 137.9 μg C g⁻¹ soil and 188.7 ± 98.2 μg C g⁻¹ soil at 50-60 cm in control plots (Table A2). Microbial biomass carbon concentrations were below the detection limit for the depth increment 80-90 cm.

Warming did not affect MBC (LME, $p=0.59$, $F=0.31$; Fig. 1). Concentrations of MBC and carbon concentrations were well correlated ($R^2=0.79$, Fig. A2).

Deleted: decreased was lower with depth (LME, $p=0.02$, $F=3.04$) from with values ranging from 5.2 ± 0.2 ... at 10-20 cm depth to and 4.5 ± 0.2 ... at 80-90 cm depth in control plots (Table 1). The pH ($p<0.01$, Table 1), and ... as not different between control and warmed plots (LME, $p=0.84$, $F=0.04$, $p=0.814$ Soil organic carbon concentrations decreased ... were also lower with depth (LME, $p<0.01$, $F=55.92$) from ... with values ranging from $66 \dots 1.9 \dots \pm 10.9$ mg g⁻¹ soil at the top ... 0-10 cm to $2 \dots 6 \dots \pm 0.8$ mg g⁻¹ soil at 80-90 cm depth in control plots (Table 1). Soil organic carbon concentrations ($p<0.01$, Table 1) and ... were lower in warmed compared to control plots below 20 cm (LME, $p=0.01$, $F=15.174$... in the soil cores analyzed here and as described in more detail on replicated cores in Soong et al. (in press ... 021). Fine root concentrations did not change with depth, ($p=0.055$) ... but were lower in warmed compared to control plots as described in Ofiti et al. (2021) ($p=0.017$; ... able 1; Ofiti et al. (resubmitted) ... [1]

Deleted: , resubmitted...2021) and fine root mass (g m⁻², Ofiti et al., resubmitted...2021) in control and warmed plots (mean± SE, n=3). More details on carbon concentrations on replicated cores in Soong et al. (in press ... [2]

Formatted: Font: 9 pt

Deleted: 5

Deleted: 15

Deleted: 25

Deleted: 35

Deleted: 45

Deleted: 55

Deleted: 65

Deleted: 75

Deleted: 85

Deleted: decreased declined with increasing depth in our soil cores... independent of treatment (LME, $p<0.01$, $F=8.21$, Table A2.... In the top 10 cm, concentrations were $65 \dots 27.1 \dots \pm 7 \dots 37.2$... mmol ug C g⁻¹ soil and decreased to ... $5 \dots 8.0 \dots \pm 5 \dots 8.3$... mmol ug C g⁻¹ soil at 50-60 cm in control plots (Table A2). Microbial biomass carbon concentrations were below the detection limit for the depth increment 80-90 cm. Warming did not affect MBC (LME, $p=0.564$... , $F=0.31$; Fig. 1). Concentrations of MBC and carbon concentrations were well correlated ($R^2=0.62$... [3]

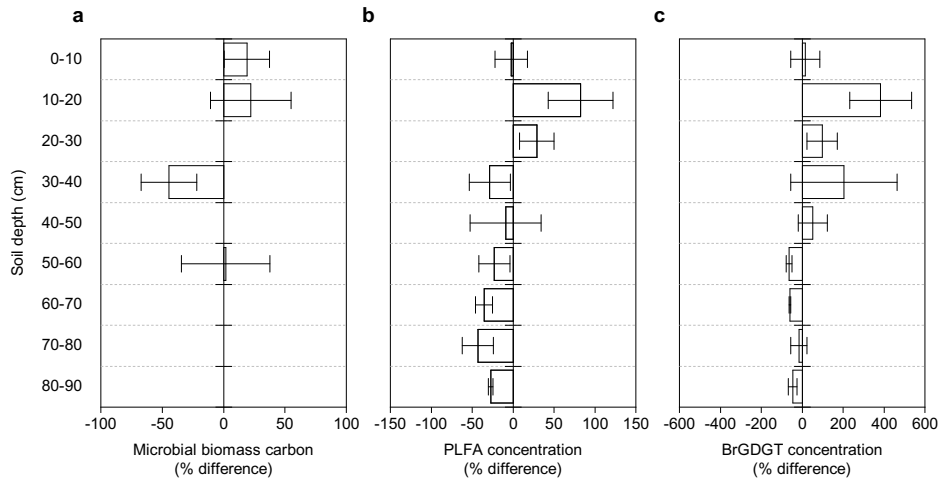


Figure 1: Changes in microbial abundance between warmed and control plots based on (a) microbial biomass carbon using chloroform fumigation extraction (Soong et al., 2021); (b) PLFA concentrations and (c) brGDGT concentrations after 4.5 years of +4 °C soil warming. Values are shown as [(warmed-control)/control × 100] (mean ± SE, n=3). The scale is adjusted to the respective values.

Deleted: in press

Deleted: *

3.3 Phospholipid fatty acids

Similar to the MBC, PLFA concentrations declined with depth, independent of treatment (LME, $p < 0.01$, $F = 41.95$). Concentrations were 62.4 ± 16.6 nmol g⁻¹ soil in the top 10 cm of the mineral soil and 3.1 ± 0.2 nmol g⁻¹ soil at 80-90 cm in control plots (Table A2). Concentrations of PLFAs and carbon as well as concentrations of PLFAs and MBC were well correlated ($R = 0.94$ and $R = 0.82$, respectively; Fig. A3a,b). The proportion of PLFAs to SOC increased with soil depth ($p < 0.01$, Fig. 2).

Deleted: decreased

Deleted: , Table A2

Deleted: 58

Deleted: 5

Deleted: 8.1

Deleted: and decreased to 2

Deleted: 7

Deleted: s

Deleted: ²

Deleted: 88

Deleted: ²

Deleted: 68

Deleted: was higher with

Deleted: ing

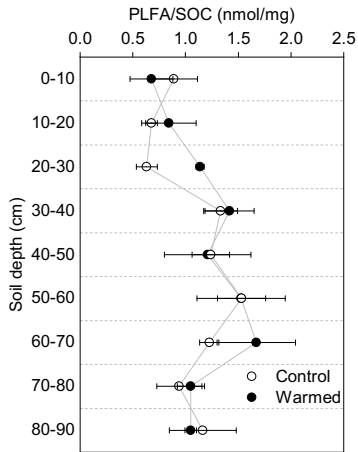


Figure 2: Proportion of PLFAs to SOC in control and warmed plots after 4.5 years of +4°C soil warming (mean ± SE, n=3).

Gram⁻ bacteria and fungi were relatively more abundant in the topsoil as compared to subsoil (LME; $p=0.01$, $F=3.06$ and $p=0.02$, $F=2.68$, respectively). In control plots, Gram⁻ bacteria accounted for 62.1 ± 0.4 mol% in the top 10 cm and 48.9 ± 1.1 mol% at 80-90 cm and fungi for 8.5 ± 2.0 mol% and 3.5 ± 0.6 mol%, respectively (Table A3). Gram⁺ bacteria and actinobacteria on the other hand were relatively more abundant in subsoil (LME; $p<0.01$, $F=3.43$ and $p<0.01$, $F=7.59$, respectively). In control plots, Gram⁺ bacteria accounted for 22.5 ± 1.6 mol% in the top 10 cm and 34.7 ± 0.7 mol% at 80-90 cm and actinobacteria for 7.0 ± 0.5 mol% and 13.0 ± 0.6 mol%, respectively (Table A3). The ratio of anteiso to iso PLFAs declined with depth (LME, $p<0.01$, $F=10.51$, Fig. 3).

- Deleted: The relative abundance of gram
- Deleted: decreased from
- Deleted: 61
- Deleted: 8
- Deleted: 1
- Deleted: 8
- Deleted: of the mineral soil to
- Deleted: 49
- Deleted: 1
- Deleted: 0
- Deleted: 5
- Deleted: fungi from 7
- Deleted: 4
- Deleted: 1
- Deleted: 2
- Deleted: to
- Deleted: 2
- Deleted: 9
- Deleted: 5
- Deleted: $p<0.01$ for both,
- Deleted: increased in relative abundance with depth from
- Deleted: 24
- Deleted: 6
- Deleted: 2
- Deleted: of the mineral soil to
- Deleted: 4
- Deleted: 5
- Deleted:
- Deleted: from 6
- Deleted: 3
- Deleted: 4
- Deleted: in the top 10 cm of the mineral soil to
- Deleted: 7
- Deleted: 5
- Deleted: at 80-90 cm,
- Deleted: $p<0.01$ for both,
- Deleted: decreased
- Formatted: Left, Line spacing: single

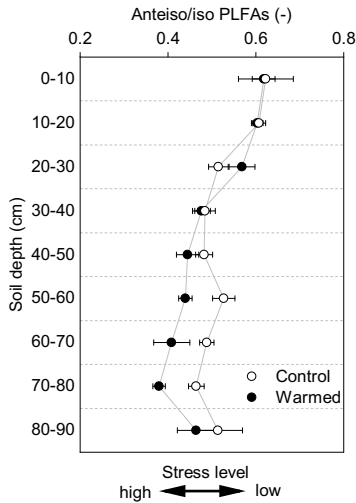


Figure 3: The ratio of *anteiso* to *iso* PLFAs in control and warmed plots after 4.5 years of +4 °C soil warming (mean ± SE, n=3). This ratio has been interpreted as an indicator of stress on *Gram+* bacteria with lower values indicating a higher stress level.

415 The concentrations of PLFAs were lower in warmed as compared to control plots (LME, $p=0.045$, $F=4.33$; Fig. 1b). Below 30 cm, the concentrations of PLFAs were significantly lower by 28% in warmed compared to control plots (LME_{30-90cm}, $p<0.01$, $F=9.69$). The proportions of total PLFA concentrations to SOC were not affected by warming (LME, $p=0.51$, $F=0.44$, Fig. 2).

420 There were no differences between warmed and control plots in the relative abundance of *Gram+*, *Gram-*, actinobacteria and fungi over the whole soil profile (LME: $p=0.34$, $F=0.95$; $p=0.72$, $F=0.13$; $p=0.58$, $F=0.32$ and $p=0.19$, $F=1.76$, respectively, Fig. 4). Below 50 cm, the relative abundance of actinobacteria was higher in warmed compared to control plots (LME_{50-90cm}, $p<0.01$, $F=11.58$; Fig. 4a). The ratio of *anteiso* to *iso* PLFAs was lower in warmed compared to control plots (LME, $p=0.01$, $F=7.44$; Fig. 3).

425

- Deleted: gram
- Deleted: was
- Deleted: not
- Deleted: affected by the
- Deleted: warming
- Deleted: treatment over the whole soil profile
- Deleted: 057
- Deleted: ,
- Deleted: , however there was a significant interaction between treatment and depth ($p=0.020$)
- Deleted: In the top 10 cm of the mineral soil there was no effect of warming on the concentration of PLFAs ($p=0.843$). Between 10 and 30 cm, there was a trend to higher concentrations of PLFAs in warmed compared to control plots (10-20 cm $p=0.082$ and 20-30 cm $p=0.460$). Running the mixed model with all depth increments below
- Deleted: , the
- Deleted: s
- Deleted: below 30 cm was
- Formatted: Subscript
- Deleted: =
- Deleted: 002
- Deleted: was
- Deleted: 544
- Deleted: gram
- Deleted: gram
- Deleted: 23
- Deleted: ,
- Deleted: 66
- Deleted: 635
- Deleted: 79
- Deleted: We further investigated the depth-specific effect of warming for actinobacteria due to the low significance level of the interaction of treatment and depth ($p=0.056$). B
- Deleted: the
- Formatted: Subscript
- Deleted: =
- Deleted: 004
- Deleted: 022

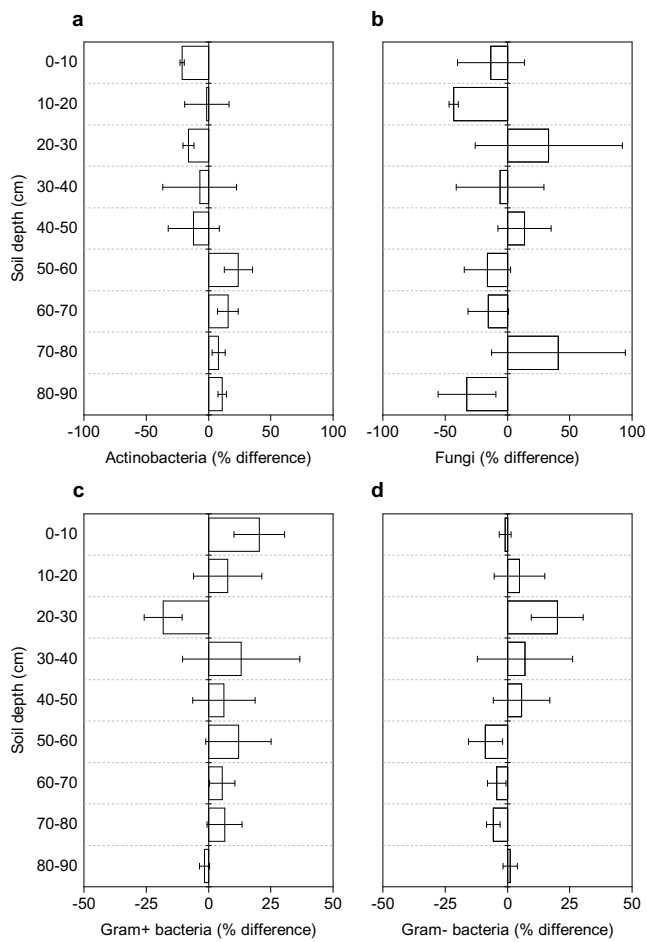


Figure 4: Changes in the relative abundance of (a) actinobacteria; (b) fungi; (c) Gram+ bacteria and (d) Gram- bacteria based on PLFA biomarkers after 4.5 years of +4°C soil warming. Values are shown as [(warmed-control)/control] × 100 (mean ± SE, n=3).

Deleted: gram

Deleted: gram

Deleted: -

Deleted: *

3.4 Branched glycerol dialkyl glycerol tetraethers

470 Concentrations of brGDGTs declined with depth (LME, $p < 0.01$, $F = 9.99$). In the top 10 cm of control plots, concentrations were 88.7 ± 48.1 ng g⁻¹ soil and at 80-90 cm depth, 19.7 ± 8.2 ng g⁻¹ soil (Table A2). There was only a moderate correlation between brGDGT concentrations and concentrations of SOC, PLFAs, or MBC ($R = 0.67$, $R = 0.64$ and $R = 0.58$, respectively; Fig. A4a-c).

475 The relative abundance of individual brGDGTs compared to the total was dominated by compounds Ia, IIa, IIa', IIIa, and IIIa' (Table A4). Compounds IIa' and IIIa' were less abundant with depth (LME: $p = 0.03$, $F = 2.46$, and $p < 0.01$, $F = 3.84$, respectively; Table A4).

480 There was no effect of warming on the concentrations of brGDGTs over the whole soil profile (LME, $p = 0.28$, $F = 1.22$; Fig. 1c). Below 50 cm, the concentrations of brGDGTs were lower in warmed compared to control plots (LME_{50-90cm}, $p < 0.01$, $F = 12.13$). There was no effect of warming on the relative abundance of any individual brGDGT (LME, $p > 0.05$ for all; Table A4).

4 Discussion

4.1 Depth trend in microbial abundance and community structure

485 Both MBC and PLFA microbial abundance proxies indicated lower microbial concentrations in subsoils compared to topsoils, independent of treatment (Table A2). This depth trend strongly correlates with SOC concentrations (Fig. A2 and A3a), supporting the consensus that the concentration of SOC is an important controlling factor on microbial abundance in soils (Fierer, 2017; Soong et al., 2020b). Similarly, carbon availability is an important factor structuring the microbial community composition in soil depth profiles, with oligotrophic bacteria favoured when nutrients become limiting (Brewer et al., 2019; Fierer et al., 2003b). Increasing relative abundance of Gram⁺ and decreasing abundance of Gram⁻ bacteria with depth (Table A3) indicates a decrease in SOC availability (Fanin et al., 2019). Gram⁻ bacteria are more dependent on labile plant-derived carbon sources, whereas Gram⁺ bacteria are able to grow on more complex carbon sources (Fanin et al., 2019). The observed relative increase in actinobacteria with depth (Table A3) is consistent with previous findings from a grassland site (Fierer et al., 2003b). It has been shown that certain actinobacteria are able to degrade complex carbon sources and grow mycelia-like structures, which might allow this microbial group to thrive in the subsoil (Goodfellow and Williams, 1983). Fungal abundance decreased with depth (Table A3), likely because fresh plant-derived carbon, which supports the growth of saprotrophic fungi, is more available in the upper soil horizons (Griffiths et al., 1999; Lindahl et al., 2007). Finally, the ratio of anteiso to iso fatty acids has been used as a stress indicator in Gram⁺ bacteria (Wixon and Balsler, 2013), where a lower ratio indicates that the membrane fluidity is higher, as an adaptation of microorganisms to maintain growth (Hall et al.,

Deleted: decreased

Deleted: ; Table A2

Deleted: 68

Deleted: 23

Deleted: 7

Deleted: decreased

Deleted: to

Deleted: 13

Deleted: 8

Deleted: 4

Deleted: 6

Deleted: at 80-90 cm depth

Deleted: 2

Deleted: 45

Deleted: 2

Deleted: 42

Deleted: 2

Deleted: 33

Deleted: (30.8±0.8 %)

Deleted: (19.0±1.1 %)

Deleted: (21.2±1.1%)

Deleted: (9.5±0.5 %)

Deleted: 7.1±1 %,

Deleted: IIa and IIIa were more abundant with depth compared to the other compounds ($p = 0.002$ and $p = 0.038$, respectively), whereas the opposite was true for

Deleted: <

Deleted: 0.01

Deleted: 422

Deleted: Concentrations of brGDGTs were higher in warmed plots at 10-20 cm ($p = 0.041$), but not affected by warming at 0-10 cm ($p = 0.649$) and the 10 cm increments from 20 to 50 cm ($p = 0.531$, $p = 0.957$ and $p = 0.801$, respectively). The significance level of the interaction between treatment and depth was rather low ($p = 0.093$) [4]

Deleted: concentrations were

Formatted: Subscript

Deleted: =

Deleted: 027

Deleted: gram

Deleted: gram

Deleted: gram

Deleted: gram

2010). The lower ratio in subsoils (Fig. 3) might be related to the low-carbon environment in subsoils. However, other factors such as pH, soil moisture, or temperature also shape the microbial community (Drenovsky et al., 2004; Fierer, 2017).
550 For example, the pH at our site is lower in the subsoil compared to topsoil, which most likely will stimulate adaptations of the cell membranes.

The concentrations of brGDGTs also declined with depth (Table A2), but the correlation with carbon concentrations (Fig. A4a) and the other microbial biomass proxies (Fig. A4b,c) was only moderate ($R < 0.67$). The moderate correlation is likely
555 because brGDGTs are a time-integrated signal of accumulated necromass with a turnover time of several decades (Weijers et al., 2010). We did observe significant depth trends for two brGDGTs. However, it is unclear whether these trends reflect changes in the community structure or physiological adaptations of single microorganisms with depth as the source organisms are not yet fully identified (Sinninghe Damsté et al., 2014).

560 Overall, carbon concentrations seem to be a strong control on the microbial proxies MBC and PLFAs, whereas brGDGT distribution is known to be strongly influenced by mean annual air temperature and pH, but may also be affected by other factors like vegetation (Ayari et al., 2013), seasonality (Huguet et al., 2013) or soil moisture (Menges et al., 2014).

4.2 Less microbial biomass with warming in subsoil, but not topsoil

Our results show a distinctly different response of topsoil and subsoil microbial abundance to warming in PLFA concentrations (Fig. 1b). There was no significant effect of warming on the microbial abundance in the topsoil, which confirms previous observations from forest topsoils (Chen et al., 2015). Lower PLFA concentrations in warmed compared to control subsoils contradict our first hypothesis that the increased respiration observed at all depths (Hicks Pries et al., 2017; Soong et al., 2021) is at least partially reflected by an increase in microbial biomass. Lower concentrations of brGDGTs in warmed compared to control subsoils are in line with the observation in PLFAs, even though only at depths from 50 to 90
570 cm (Fig. 1c) and with our second hypothesis, that microbial necromass would be less abundant in warmed soils. Due to the higher persistence of brGDGTs in soils there might be a lag in response as compared to PLFAs (Weijers et al., 2010). Nevertheless, accelerated decomposition at soil depths below 50 cm as observed by Ofiti et al. (2021), likely combined with lower microbial biomass inputs cause a decrease in concentrations of brGDGTs. Microbial biomass carbon on the other hand was not affected by warming at any depth (Fig. 1a). We hypothesize that the bulk measurement of MBC might be less
575 powerful at capturing treatment effects compared to the targeted molecular analysis of PLFAs and brGDGTs.

Limitation of available carbon has been suggested as a potential driver of decreasing microbial abundance in long-term warming experiments (Kirschbaum, 2004; Walker et al., 2018) and has been reported in surface soils of field warming experiments (Melillo et al., 2017; Pold et al., 2017). Microbial abundance closely tracked carbon concentrations with depth and as they changed with warming. The ratio of total PLFAs to SOC did not change with warming (Fig. 2), despite 28 %
580

Deleted: decreased

Deleted: ²

Deleted: 45

Deleted: several

Deleted: in press

Deleted: .

Deleted: .

590 lower PLFA concentrations in the warmed subsoil (Fig. 1b). Soil organic carbon inputs to subsoils in the form of dissolved organic carbon (DOC) cascading down from the topsoil are often strongly processed (Roth et al., 2019) and fine root litter inputs decline with depth (Leppälampi-Kujansuu et al., 2013). Declining SOC inputs with depth may limit microbially available carbon with warming in subsoils as compared to topsoils. We observed lower concentrations of particulate organic matter (Soong et al., 2021) and fine root mass in the warmed subsoils (Table 1; Ofiti et al., 2021). After 3.5 years of warming, unprotected SOC (i.e., not mineral associated) had been depleted due to warming in the subsoil (Soong et al., 2021), indicating a loss of easily accessible organic matter for subsoil microorganisms. These results suggest that in this 595 forest, carbon limitation might be one cause for the lower abundance of microorganisms in subsoil after 4.5 years of +4 °C warming.

In addition to SOC availability, temperature as such (Bradford, 2013) and changes in soil moisture associated with warming (Manzoni et al., 2012) likely affect microbial abundance. We did observe a similar respiration response at all depths (Hicks-Pries et al. 2017), indicating that the microbial response might be similar despite the difference in warming magnitude between the top 20 cm and the lower horizons. Nevertheless, temperature controls the reaction rates of microbial enzymes, which in turn can affect microbial abundance (Allison et al., 2010) and incubation experiments show strong effects of temperature magnitude on soil respiration, including in subsoil (Yan et al., 2017). Thus, the higher magnitude of warming below 20 cm in our experiment might be partially responsible for the observed difference in the microbial response between 600 top- and subsoil. Furthermore, warming of the soil caused a significant decrease in the volumetric water content by 2-5 percentage points throughout the soil profile in the warmed plots in our experiment (Soong et al., 2021). Drying is expected to coincide with rising temperatures in Mediterranean climate regions under future climate scenarios (Polade et al., 2017). In mesic soils, drying generally has a negative effect on microbial abundance and activity (Manzoni et al., 2012).

610 To our knowledge, only Zhang et al. (2015) reported microbial responses to *in situ* subsoil warming. In their experiment, warming induced an increase in microbial biomass down to 50 cm and the authors proposed that this was due to increased SOC availability due to stimulated plant growth, a reduction of anaerobic conditions, and better thermal growth conditions for microorganisms (Zhang et al., 2015). The uniform increase in microbial biomass and the proposed underlying processes could not be observed in our experiment perhaps because the warming treatment was different. Zhang et al. (2015) created a 615 gradient of warming from +1.4 °C at 10 cm depth to only +0.1 °C at 50 cm depth, barely warming the subsoil. Warming throughout the profile may offer a treatment closer to predictions of whole-soil warming by climate change (Soong et al., 2020a). Furthermore, plant dynamics and environmental factors such as temperature and soil hydrology are very different between their grassland site on the Tibetan plateau and our forest site in Mediterranean climate. Microorganisms at their site are much more limited by temperature (MAT -3.8 °C) and affected by anoxic conditions (Zhang et al., 2015). We propose 620 that similarly to topsoils, in subsoils the ecosystem type and experimental setup strongly affect the observed response of microbial abundance to warming (Chen et al., 2015).

Deleted: in press

Deleted: ,

Deleted: resubmitted

Deleted: in press

Formatted: Font: (Default) Times New Roman

Deleted: For example

Deleted: .

Formatted: Font: (Default) Times New Roman

Formatted: Font: (Default) Times New Roman

Formatted: Font: (Default) Times New Roman

Deleted: in press

4.3 Small effect on microbial community composition in subsoils

630 Whereas 4.5 years of +4 °C warming decreased subsoil microbial abundance by 28 %, there were only minor effects on the microbial community structure as assessed by organic geochemical methods. Only actinobacteria increased in relative abundance with warming in the lower subsoil (below 50 cm, Fig. 4a). We also observed a decrease in the ratio of *anteiso* to *iso* fatty acids with warming (Fig. 3). Changes in this ratio have been attributed to physiological adaptations of Gram+ bacteria to warming-induced stress rather than shifts in the community structure (Wixon and Balsler, 2013). The above observations are in line with our third hypothesis that warming would cause depth-dependent changes in the microbial community.

640 So far, laboratory incubations tentatively identified actinobacteria as one of the microbial groups that can be stimulated by warming (Oliverio et al., 2017). Our field observation of higher relative abundance of actinobacteria in the lower subsoils confirms findings from these laboratory incubations, and shows that warming affected actinobacteria less negatively relative to the other microbial groups. Furthermore, our results are also consistent with observations by Frey et al. (2008). They reported increased relative abundance of actinobacteria in a long-term warming experiment in topsoils after more than 12 years of warming, where lower SOC availability was a main driver of the microbial response (Frey et al., 2008). Characteristics of actinobacteria indicate their ability to degrade complex polymers in soils (Goodfellow and Williams, 645 1983) and long-term experimental warming caused an increase in carbohydrate degrading genes of actinobacteria (Pold et al., 2016). Finally, actinobacteria seem to be more resistant to drought than other microbial taxa (Naylor et al., 2017). It remains uncertain whether this is due to their ability for sporulation or other mechanisms (Naylor et al., 2017), but the resistance to decreasing soil moisture could further contribute to the relative increase in abundance in our warmed subsoils. Thus, actinobacteria might be relatively more abundant due to a combination of resilience to warming and adaption to lower 650 SOC concentrations and reduced soil moisture.

Although warming did not alter the relative abundance of Gram+ bacteria, it did significantly change the fatty acid composition of microbial membranes, expressed as the ratio of *anteiso* to *iso* branched phospholipid fatty acids in the subsoil (Fig. 3). The ratio of *anteiso* to *iso* fatty acids likely reflects an acclimation to changing temperatures in Gram+ bacteria, 655 which might give Gram+ bacteria a competitive advantage because they can adapt to changing environmental conditions (Hall et al., 2010). Nonetheless, the synthesis of new lipids is energy intensive and might contribute to the lower efficiency at which carbon is incorporated to microbial biomass (Hall et al., 2010). Overall, multiple years of soil warming caused a shift in the microbial community at Blodgett Forest towards higher relative abundance of organisms able to utilize complex organic compounds and physiologically adapt to higher temperatures. Thus, there could be continued enhancement of 660 decomposition including previously stable SOC in warmed subsoils.

Deleted: gram

Deleted: gram

Deleted: gram

Deleted: gram

Deleted: f
M

670 The shifts in the microbial community and physiology observed by PLFAs were not reflected in the relative abundance of individual brGDGTs (Table A4). Likewise, at a decadal geothermal temperature gradient the brGDGT fingerprint only changed at high warming magnitude where soil temperatures were $> +14^{\circ}\text{C}$ above ambient, when the microbial community was also significantly altered (De Jonge et al., 2019). In our experiment, lower concentrations of brGDGTs in the subsoil (Fig. 1c) did not affect the relative abundance of individual brGDGTs. This indicates that after 4.5 years of warming there was no shift in the microbial community or physiology which produced detectable shifts in brGDGTs, nor preferential
675 decomposition of certain core brGDGTs.

Further research is needed to assess how microbial abundance and community composition will evolve with long-term subsoil warming. A long-term study at Harvard Forest indicated that microbial response to warming, at least in topsoils, progressed in cycles of change in the microbial community and decomposition rates (Melillo et al., 2017). It is not known
680 whether similar impacts will occur in subsoils. Furthermore, seasonality can affect microbial biomass and community structure (Contosta et al., 2015) and only having samples from one time point is a limitation in our study. The fact that subsoil microorganisms are differently affected by warming compared to topsoils is valuable information needed to predict the long-term response of ecosystems to climate change, even if these effects diminish over the long term or are seasonally varying.

685 5 Conclusion

Microbial biomass concentrations in warmed subsoil (below 30 cm) were 28 % lower compared to the control after 4.5 years of $+4^{\circ}\text{C}$ warming, whereas they were not significantly affected in topsoils, consistent with changes in SOC stock. We showed for the first time that subsoil and topsoil microbial communities respond differently to whole soil warming. In the lower subsoil (below 50 cm) actinobacteria were relatively more abundant, whereas Gram+ bacteria revealed physiological
690 adaptations of the cell membrane in response to warming-related stress. Changes in the amount and composition of subsoil SOC along with the direct effects of warming are likely main drivers of changes in the microbial community. Whether less biomass in subsoils will lead to reduced respiration in the future remains to be investigated. The observed shift in the subsoil microbial community composition favoured actinobacteria which are able to metabolize more complex carbon sources, suggesting that soil warming may lead to microbial responses that disproportionately enhance degradation of previously
695 stable subsoil carbon.

Deleted: gram

6 Appendices

700 Appendix A-Figures

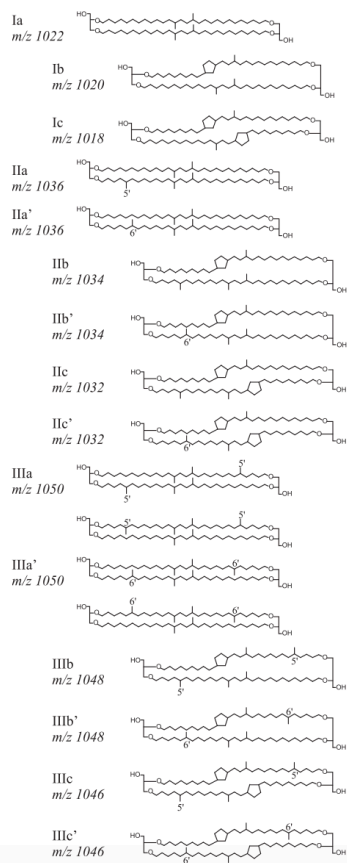
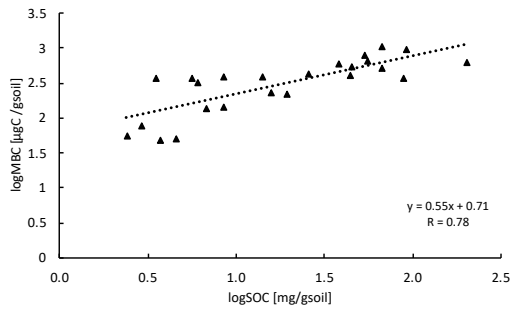
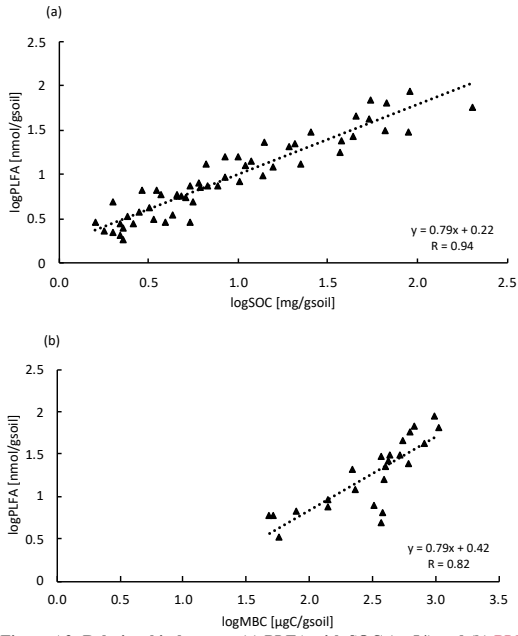


Figure A1: Chemical structures and molecular masses of brGDGTs as described in De Jonge et al. (2014).



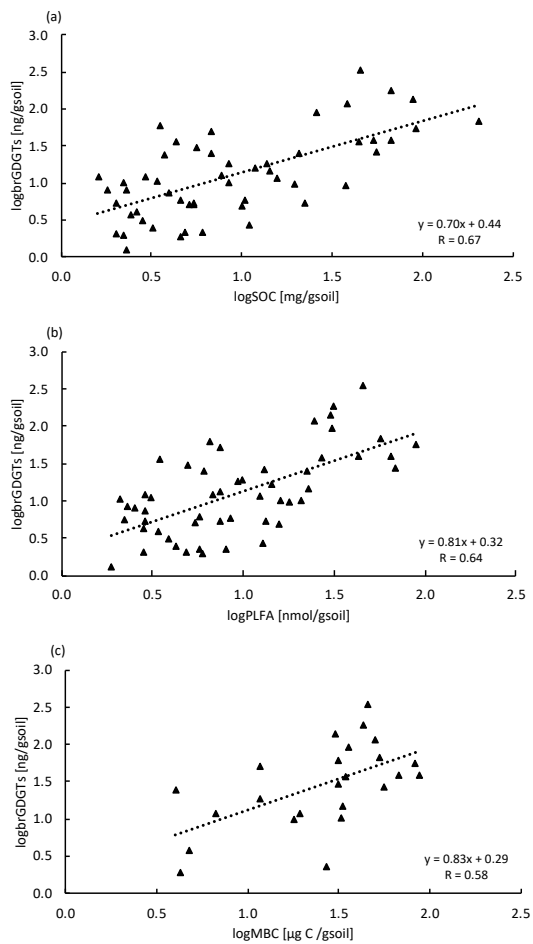
705 **Figure A2: Relationship between MBC and SOC at all depth increments (n=24). Values were log-transformed to meet normality.**



710 Figure A3: Relationship between (a) PLFA with SOC (n=54) and (b) PLFA with MBC (n=24) at all depth increments. Values were log transformed to meet normality.

Deleted: MBC

Deleted: PLFA



715

Figure A4: Relationship between (a) brGDGT with SOC (n=54) (b) brGDGT with PLFA (n=54) and (c) brGDGT with MBC (n=24) at all depth increments. Values were log transformed to meet normality.

Table A1: GC oven and multimode inlet temperature programs for PLFA measurements.

GC oven temperature program			Multimode inlet temperature program		
Rate [°C min ⁻¹]	Temperature [°C]	Hold time [min]	Rate [°C min ⁻¹]	Temperature [°C]	Hold time [min]
-	50	4	-	60	0.5
10	150	0	850	400	5
2	160	0	50	250	-
0.5	170	10			
0.2	175	10			
0.2	180	10			
0.2	185	5			
0.2	190	5			
2	210	0			
5	320	15			

Table A2: Concentrations of MBC using chloroform fumigation extraction (Soong et al., 2021), PLFAs and brGDGTs in control and warmed plots (mean± SE, n=3).

Soil depth [cm]	MBC [$\mu\text{g C g}^{-1}$ soil]		PLFA [nmol g^{-1} soil]		brGDGT [ng g^{-1} soil]	
	Control	Warmed	Control	Warmed	Control	Warmed
0-10	727.6±137.9	835.5±123.2	62.4±16.6	54.5±6.2	88.7±48.1	48.8±9.8
10-20	417.9±107.8	450.8±54.1	21.1±4.5	35.2±5.0	55.2±31.8	190.5±77.3
20-30	-	-	13.2±2.7	16.3±2.9	6.9±1.3	14.7±6.5
30-40	313.1±52.3	196.0±102.7	17.1±4.6	10.3±2.9	8.9±3.6	10.2±4.8
40-50	-	-	9.6±3.1	7.7±3.0	6.7±3.2	10.5±7.6
50-60	188.7±98.2	170.7±102.5	6.7±0.4	5.0±1.0	45.0±10.7	15.2±7.7
60-70	-	-	6.2±0.6	4.0±0.6	5.4±0.3	2.2±0.1
70-80	-	-	5.5±2.2	2.3±0.3	9.7±4.6	4.6±2.0
80-90	-	-	3.1±0.2	2.3±0.1	19.7±8.2	7.9±1.4

Deleted: in press

Deleted: mmolC

Deleted: 60

Deleted: 11

Deleted: 5

Deleted: 69

Deleted: 10

Deleted: 3

Deleted: -5

Deleted: 34

Deleted: 8

Deleted: 9

Deleted: 0

Deleted: 37

Deleted: 5

Deleted: 4

Deleted: 5

Deleted: -15

Deleted: -25

Deleted: 26

Deleted: 4

Deleted: 4

Deleted: 3

Deleted: 8

Deleted: 5

Deleted: -35

Deleted: -45

Deleted: 15

Deleted: 8

Deleted: 14

Deleted: 2

Deleted: 8

Deleted: 5

Deleted: -55

Deleted: -65

Deleted: -75

Deleted: -85

Table A3: Relative abundance of microbial groups, identified using PLFAs in control and warmed plots (mean± SE, n=3).

Soil depth [cm]	Gram+ [mol%]		Gram- [mol%]		Fungi [mol%]		Actinobacteria [mol%]	
	Control	Warmed	Control	Warmed	Control	Warmed	Control	Warmed
0-10	22.5±1.6	26.7±0.5	62.1±0.4	61.5±1.7	8.5±2.0	6.3±1.1	7.0±0.5	5.5±0.4
10-20	26.6±2.0	28.2±2.1	56.7±3.7	58.8±2.2	6.1±0.6	3.4±0.2	10.5±2.2	9.6±0.1
20-30	35.0±4.9	27.9±1.7	47.3±5.2	55.8±2.3	3.3±1.3	4.4±1.9	14.3±1.6	11.9±0.8
30-40	27.6±4.7	29.2±3.2	53.6±4.5	55.8±5.8	5.6±2.1	3.8±0.6	13.3±1.9	11.3±2.0
40-50	29.0±4.4	29.8±1.9	54.3±5.7	56.0±1.2	3.3±1.4	3.4±1.0	13.4±2.6	10.8±0.5
50-60	29.6±1.4	32.8±2.2	55.2±1.6	50.1±2.5	4.0±0.3	3.3±0.6	11.1±0.5	13.7±0.6
60-70	30.5±2.1	32.1±2.0	54.6±1.3	52.3±2.4	4.0±0.8	3.1±0.2	10.9±0.4	12.6±0.6
70-80	33.0±3.8	34.6±1.7	51.5±4.3	48.3±2.7	2.4±0.7	2.9±0.9	13.2±1.0	14.2±1.1
80-90	34.7±0.7	34.1±1.0	48.9±1.1	49.3±0.7	3.5±0.6	2.2±0.5	13.0±0.6	14.3±0.4

Deleted: -

Deleted: -5

Deleted: -15

Deleted: -25

Deleted: -35

Deleted: -45

Deleted: -55

Deleted: -65

Deleted: -75

Deleted: -85

Table A4: Relative abundance of individual brGDGTs compared to the total in control and warmed plots (mean± SE, n=3). All 785 compounds were included for the calculation, but only the five most abundant are shown in the table.

Soil depth [cm]	Ia [%]		IIa [%]		IIa' [%]		IIIa [%]		IIIa' [%]		
	Control	Warmed	Control	Warmed	Control	Warmed	Control	Warmed	Control	Warmed	
0-10	24.8±7.7	29.4±2.6	14.8±4.6	16.8±3.2	26.3±4.4	25.3±2.0	11.2±0.9	9.9±4.0	14.6±7.5	8.6±3.1	Deleted: -5
10-20	25.3±4.7	30.4±2.5	15.9±6.8	20.1±5.0	26.6±4.0	25.2±3.7	9.4±3.7	8.8±2.4	16.2±10.0	8.1±2.8	Deleted: -15
20-30	28.6±3.0	35.8±1.6	11.9±4.7	17.0±3.7	28.3±2.8	21.9±7.9	6.7±1.6	7.2±1.8	9.4±2.4	5.2±2.2	Deleted: -25
30-40	32.1±2.7	33.9±5.4	11.9±2.9	17.1±3.0	28.1±1.7	19.1±9.5	7.0±1.0	6.8±0.8	8.4±1.4	3.8±1.8	Deleted: -35
40-50	30.7±2.7	35.1±3.4	15.1±3.9	23.9±3.9	25.7±4.5	16.5±3.6	8.4±0.1	9.8±2.3	7.3±2.1	3.4±0.7	Deleted: -45
50-60	31.0±0.5	33.0±4.7	21.3±8.2	27.4±6.4	21.7±6.4	15.2±5.7	10.6±2.7	12.2±1.7	5.4±1.9	3.3±0.6	Deleted: -55
60-70	33.4±2.0	31.4±9.4	20.2±7.0	19.8±3.8	19.3±6.2	15.2±4.0	10.2±3.2	10.5±2.3	5.1±1.3	3.7±0.6	Deleted: -65
70-80	32.5±1.9	31.6±10.6	22.5±7.7	20.8±2.4	18.2±7.6	15.2±6.0	9.8±3.2	11.3±2.2	4.7±1.9	3.1±0.8	Deleted: -75
80-90	28.1±1.0	31.3±7.3	24.8±8.5	26.6±3.0	17.0±8.4	12.0±3.6	12.2±3.9	11.9±1.8	4.7±1.9	2.4±0.5	Deleted: -85

7 Data availability

The data used in this study will be deposited on the ESS-DIVE repository (<https://ess-dive.lbl.gov/>) upon acceptance.

800 8 Author contributions

MST designed and maintained the [field](#) warming experiment. MWIS conceived the DEEP C project. CUZ, NOEO, JLS, EFS, GLBW, MST, MWIS participated in the field campaign. CUZ carried out biogeochemical analyses, supervised by GLBW and AH. All co-authors contributed to data interpretation and to the manuscript written by CUZ.

Deleted: field

9 Competing interests

805 The authors declare that they have no conflict of interest.

10 Acknowledgments

The research was supported by Swiss National Science Foundation (SNF) project 172744 (DEEP C), U.S. Department of Energy Office of Science, Office of Biological and Environmental Research Terrestrial Ecosystem Science Program, under Award DE-SC-0001234 and the SATW Germaine de Staël project 2019-08. [Emily Solly acknowledges funding from the Swiss National Science Foundation \(Ambizione grant PZ00P2_180030\)](#). We thank C. Castanha (LBL) for field and T. Kraut (UZH) for laboratory assistance. S. Derenne (Sorbonne Université) and M. van de Broek (UZH) contributed to the advancement of our work with valuable comments and discussions. The University Research Priority Program Global Change and Biodiversity (URPP-GCB) at the University of Zurich offered opportunities for helpful discussions and exchange.

815 References

- Allison, S. D., Wallenstein, M. D. and Bradford, M. A.: Soil-carbon response to warming dependent on microbial physiology, *Nat. Geosci.*, 3(5), 336–340, doi:10.1038/ngeo846, 2010.
- Ayari, A., Yang, H., Xie, S. and Wiesenberg, G. L. B.: Distribution of archaeal and bacterial tetraether membrane lipids in rhizosphere-root systems in soils and their implication for paleoclimate assessment, *Geochem. J.*, 47, 337–347, doi:10.2343/geochemj.2.0249, 2013.
- 820 Bai, T., Tao, J., Li, Z., Shu, M., Yan, X., Wang, P., Ye, C., Guo, H., Wang, Y. and Hu, S.: Different microbial responses in

- top- and sub-soils to elevated temperature and substrate addition in a semiarid grassland on the Loess Plateau, *Eur. J. Soil Sci.*, 70, 1025–1036, doi:10.1111/ejss.12800, 2019.
- 825 Bradford, M. A.: Thermal adaptation of decomposer communities in warming soils, *Front. Microbiol.*, 4, 1–16, doi:10.3389/fmicb.2013.00333, 2013.
- Bradford, M. A., Davies, C. A., Frey, S. D., Maddox, T. R., Melillo, J. M., Mohan, J. E., Reynolds, J. F., Treseder, K. K. and Wallenstein, M. D.: Thermal adaptation of soil microbial respiration to elevated temperature, *Ecol. Lett.*, 11(12), 1316–1327, doi:10.1111/j.1461-0248.2008.01251.x, 2008.
- 830 Brewer, T. E., Aronson, E. L., Arogyaswamy, K., Billings, S. A., Botthoff, J. K., Campbell, A. N., Dove, N. C., Fairbanks, D., Gallery, R. E., Hart, S. C., Kaye, J., King, G., Logan, G., Lohse, K. A., Maltz, M. R., Mayorga, E., O’Neill, C., Owens, S. M., Packman, A., Pett-Ridge, J., Plante, A. F., Richter, D. D., Silver, W. L., Yang, W. H. and Fierer, N.: Ecological and genomic attributes of novel bacterial taxa that thrive in subsurface soil horizons, *MBio*, 10(5), 1–14, doi:10.1128/mBio.01318-19, 2019.
- 835 Chen, J., Luo, Y., Xia, J., Jiang, L., Zhou, X., Lu, M., Liang, J., Shi, Z., Shelton, S. and Cao, J.: Stronger warming effects on microbial abundances in colder regions, *Sci. Rep.*, 5, 1–10, doi:10.1038/srep18032, 2015.
- Coffinet, S., Huguët, A., Williamson, D., Fosse, C. and Derenne, S.: Potential of GDGTs as a temperature proxy along an altitudinal transect at Mount Rungwe (Tanzania), *Org. Geochem.*, 68, 82–89, doi:10.1016/j.orggeochem.2014.01.004, 2014.
- Contosta, A. R., Frey, S. D. and Cooper, A. B.: Soil microbial communities vary as much over time as with chronic warming and nitrogen additions, *Soil Biol. Biochem.*, 88(3), 19–24, doi:10.1016/j.soilbio.2015.04.013, 2015.
- 840 Drenovsky, R. E., Vo, D., Graham, K. J. and Scow, K. M.: Soil water content and organic carbon availability are major determinants of soil microbial community composition, *Microb. Ecol.*, 48(3), 424–430, doi:10.1007/s00248-003-1063-2, 2004.
- De Jonge, C., Hopmans, E. C., Zell, C. I., Kim, J.-H., Schouten, S. and Sinninghe Damsté, J. S.: Occurrence and abundance of 6-methyl branched glycerol dialkyl glycerol tetraethers in soils: Implications for palaeoclimate reconstruction, *Geochim. Cosmochim. Acta*, 141, 97–112, doi:10.1016/j.gca.2014.06.013, 2014.
- Fanin, N., Kardol, P., Farrell, M., Nilsson, M.-C., Gundale, M. J. and Wardle, D. A.: The ratio of Gram-positive to Gram-negative bacterial PLFA markers as an indicator of carbon availability in organic soils, *Soil Biol. Biochem.*, 128, 111–114, doi:10.1016/j.soilbio.2018.10.010, 2019.
- 850 Fierer, N.: Embracing the unknown: Disentangling the complexities of the soil microbiome, *Nat. Rev. Microbiol.*, 15(10), 579–590, doi:10.1038/nrmicro.2017.87, 2017.
- Fierer, N., Allen, A. S., Schimel, J. P. and Holden, P. A.: Controls on microbial CO₂ production: A comparison of surface and subsurface soil horizons, *Glob. Chang. Biol.*, 9(9), 1322–1332, doi:10.1046/j.1365-2486.2003.00663.x, 2003a.
- Fierer, N., Schimel, J. P. and Holden, P. A.: Variations in microbial community composition through two soil depth profiles, *Soil Biol. Biochem.*, 35(1), 167–176, doi:10.1016/S0038-0717(02)00251-1, 2003b.
- 855 Frey, S. D., Drijber, R., Smith, H. and Melillo, J.: Microbial biomass, functional capacity, and community structure after 12

- years of soil warming, *Soil Biol. Biochem.*, 40(11), 2904–2907, doi:10.1016/j.soilbio.2008.07.020, 2008.
- Frostegård, Å., Tunlid, A. and Bååth, E.: Microbial biomass measured as total lipid phosphate in soils of different organic content, *J. Microbiol. Methods*, 14(3), 151–163, doi:10.1016/0167-7012(91)90018-L, 1991.
- 860 Gocke, M. I., Huguet, A., Derenne, S., Kolb, S., Dippold, M. A. and Wiesenberg, G. L. B.: Disentangling interactions between microbial communities and roots in deep subsoil, *Sci. Total Environ.*, 575, 135–145, doi:10.1016/j.scitotenv.2016.09.184, 2017.
- Goodfellow, M. and Williams, S. T.: Ecology of Actinomycetes, *Annu. Rev. Microbiol.*, 37(1), 189–216, doi:10.1146/annurev.mi.37.100183.001201, 1983.
- 865 Griffiths, B. S., Ritz, K., Ebbelwhite, N. and Dobson, G.: Soil microbial community structure: Effects of substrate loading rates, *Soil Biol. Biochem.*, 31(1), 145–153, doi:10.1016/s0038-0717(98)00117-5, 1999.
- Hall, E. K., Singer, G. A., Kainz, M. J. and Lennon, J. T.: Evidence for a temperature acclimation mechanism in bacteria: An empirical test of a membrane-mediated trade-off, *Funct. Ecol.*, 24(4), 898–908, doi:10.1111/j.1365-2435.2010.01707.x, 2010.
- 870 Hicks Pries, C. E., Castanha, C., Porras, R. C. and Torn, M. S.: The whole-soil carbon flux in response to warming, *Science*, 355, 1420–1423, doi:10.1126/science.aal1319, 2017.
- Huguet, A., Fosse, C., Laggoun-Défarge, F., Delarue, F. and Derenne, S.: Effects of a short-term experimental microclimate warming on the abundance and distribution of branched GDGTs in a French peatland, *Geochim. Cosmochim. Acta*, 105, 294–315, doi:10.1016/j.gca.2012.11.037, 2013.
- 875 [Huguet, A., Coffinet, S., Roussel, A., Gayraud, F., Anquetil, C., Bergonzini, L., Bonanomi, G., 836 Williamson, D., Majule, A. and Derenne, S.: Evaluation of 3-hydroxy fatty acids as a pH and temperature proxy in soils from temperate and tropical altitudinal gradients, *Org. Geochem.*, 129, 1–13, doi:10.1016/j.orggeochem.2019.01.002, 2019.](#)
- IPCC: Climate Change 2013: The Physical Science Basis. Contribution of Working Group I to the Fifth Assessment Report of the Intergovernmental Panel on Climate Change, edited by T. F. Stocker, D. Qin, G.-K. Plattner, M. Tignor, S. K. Allen, J.
- 880 Boschung, A. Nauels, Y. Xia, V. Bex, and P. M. Midgley, Cambridge University Press, Cambridge, United Kingdom and New York, NY, USA., 2013.
- Jansson, J. K. and Hofmockel, K. S.: Soil microbiomes and climate change, *Nat. Rev. Microbiol.*, 18(1), 35–46, doi:10.1038/s41579-019-0265-7, 2020.
- Jobbagy, E. G. and Jackson, R. B.: The vertical distribution of soil organic carbon and its relation to climate and vegetation, *Ecol. Appl.*, 10(2), 423–436, doi:10.1890/1051-0761(2000)010[0423:TVDOSO]2.0.CO;2, 2000.
- 885 De Jonge, C., Radujković, D., Sigurdsson, B. D., Weedon, J. T., Janssens, I. and Peterse, F.: Lipid biomarker temperature proxy responds to abrupt shift in the bacterial community composition in geothermally heated soils, *Org. Geochem.*, 137, 1–13, doi:10.1016/j.orggeochem.2019.07.006, 2019.
- Kindler, R., Miltner, A., Thullner, M., Richnow, H. H. and Kästner, M.: Fate of bacterial biomass derived fatty acids in soil
- 890 and their contribution to soil organic matter, *Org. Geochem.*, 40(1), 29–37, doi:10.1016/j.orggeochem.2008.09.005, 2009.

- Kirschbaum, M. U. F.: Soil respiration under prolonged soil warming: Are rate reductions caused by acclimation or substrate loss?, *Glob. Chang. Biol.*, 10(11), 1870–1877, doi:10.1111/j.1365-2486.2004.00852.x, 2004.
- Leppälampi-Kujansuu, J., Ostonen, I., Strömberg, M., Nilsson, L. O., Kleja, D. B., Sah, S. P. and Helmissaari, H. S.: Effects of long-term temperature and nutrient manipulation on Norway spruce fine roots and mycelia production, *Plant Soil*, 366, 895 287–303, doi:10.1007/s11104-012-1431-0, 2013.
- Lin, W., Li, Y., Yang, Z., Giardina, C. P., Xie, J., Chen, S., Lin, C., Kuzyakov, Y. and Yang, Y.: Warming exerts greater impacts on subsoil than topsoil CO₂ efflux in a subtropical forest, *Agric. For. Meteorol.*, 263, 137–146, doi:10.1016/j.agrformet.2018.08.014, 2018.
- Lindahl, B. D., Ihrmark, K., Boberg, J., Trumbore, S. E., Högberg, P., Stenlid, J. and Finlay, R. D.: Spatial separation of litter decomposition and mycorrhizal nitrogen uptake in a boreal forest, *New Phytol.*, 173(3), 611–620, doi:10.1111/j.1469-8137.2006.01936.x, 2007.
- Manzoni, S., Schimel, J. P. and Porporato, A.: Responses of soil microbial communities to water stress: Results from a meta-analysis, *Ecology*, 93(4), 930–938, doi:10.1890/11-0026.1, 2012.
- Melillo, J. M., Frey, S. D., DeAngelis, K. M., Werner, W. J., Bernard, M. J., Bowles, F. P., Pold, G., Knorr, M. A. and Grandy, A. S.: Long-term pattern and magnitude of soil carbon feedback to the climate system in a warming world, *Science*, 358(6359), 101–105, doi:10.1126/science.aan2874, 2017.
- Menges, J., Huguet, C., Alcañiz, J. M., Fietz, S., Sachse, D. and Rosell-Melé, A.: Influence of water availability in the distributions of branched glycerol dialkyl glycerol tetraether in soils of the Iberian Peninsula, *Biogeosciences*, 11, 2571–2581, doi:10.5194/bg-11-2571-2014, 2014.
- 910 Naylor, D., DeGraaf, S., Purdom, E. and Coleman-Derr, D.: Drought and host selection influence bacterial community dynamics in the grass root microbiome, *ISME J.*, 11(12), 2691–2704, doi:10.1038/ismej.2017.118, 2017.
- Nottingham, A. T., Meir, P., Velasquez, E. and Turner, B. L.: Soil carbon loss by experimental warming in a tropical forest, *Nature*, 584, 234–237, doi:10.1038/s41586-020-2566-4, 2020.
- Ofiti, N. O. E., Zosso, C. U., Soong, J. L., Solly, E. F., Margaret, S. and Schmidt, M. W. I.: Warming promotes loss of subsoil carbon through accelerated degradation of plant-derived organic matter, *Soil Biol. Biochem.*, ~~156, 108185~~, doi:10.1016/j.soilbio.2021.108185, 2021.
- Oliverio, A. M., Bradford, M. A. and Fierer, N.: Identifying the microbial taxa that consistently respond to soil warming across time and space, *Glob. Chang. Biol.*, 23(5), 2117–2129, doi:10.1111/gcb.13557, 2017.
- Polade, S. D., Gershunov, A., Cayan, D. R., Dettinger, M. D. and Pierce, D. W.: Precipitation in a warming world: Assessing projected hydro-climate changes in California and other Mediterranean climate regions, *Sci. Rep.*, 7(1), 1–10, doi:10.1038/s41598-017-11285-y, 2017.
- 920 Pold, G., Billings, A. F., Blanchard, J. L., Burkhardt, D. B., Frey, S. D., Melillo, J. M., Schnabel, J., van Diepen, L. T. A. and DeAngelis, K. M.: Long-term warming alters carbohydrate degradation potential in temperate forest soils, *Appl. Environ. Microbiol.*, 82(22), 6518–6530, doi:10.1128/AEM.02012-16, 2016.

Formatted: Font: (Default) Times New Roman

Deleted: resubmitted.

- Pold, G., Grandy, A. S., Melillo, J. M. and DeAngelis, K. M.: Changes in substrate availability drive carbon cycle response to chronic warming, *Soil Biol. Biochem.*, 110, 68–78, doi:10.1016/j.soilbio.2017.03.002, 2017.
- R Core Team: R: A language and environment for statistical computing. R Foundation for Statistical Computing, Vienna, Austria. [online] Available from: <https://www.r-project.org/>, 2020.
- 930 Ramsey, P. W., Rillig, M. C., Feris, K. P., Holben, W. E. and Gannon, J. E.: Choice of methods for soil microbial community analysis: PLFA maximizes power compared to CLPP and PCR-based approaches, *Pedobiologia (Jena)*, 50(3), 275–280, doi:10.1016/j.pedobi.2006.03.003, 2006.
- Roth, V.-N., Lange, M., Simon, C., Hertkorn, N., Bucher, S., Goodall, T., Griffiths, R. I., Mellado-Vázquez, P. G., Mommer, L., Oram, N. J., Weigelt, A., Dittmar, T. and Gleixner, G.: Persistence of dissolved organic matter explained by molecular changes during its passage through soil, *Nat. Geosci.*, 12(9), 755–761, doi:10.1038/s41561-019-0417-4, 2019.
- 935 Rumpel, C. and Kögel-Knabner, I.: Deep soil organic matter—a key but poorly understood component of terrestrial C cycle, *Plant Soil*, 338(1), 143–158, doi:10.1007/s11104-010-0391-5, 2011.
- Sinninghe Damsté, J. S., Rijpstra, W. I. C., Hopmans, E. C., Foessel, B. U., Wüst, P. K., Overmann, J., Tank, M., Bryant, D. A., Dunfield, P. F., Houghton, K. and Stott, M. B.: Ether- and ester-bound iso-diabolic acid and other lipids in members of
- 940 Acidobacteria subdivision 4, *Appl. Environ. Microbiol.*, 80(17), 5207–5218, doi:10.1128/AEM.01066-14, 2014.
- Soong, J. L., Phillips, C. L., Ledna, C., Koven, C. D. and Torn, M. S.: CMIP5 Models Predict Rapid and Deep Soil Warming Over the 21st Century, *J. Geophys. Res. Biogeosciences*, 125(2), 1–17, doi:10.1029/2019jg005266, 2020a.
- Soong, J. L., Fuchslueger, L., Marañón-Jimenez, S., Torn, M. S., Janssens, I. A., Penuelas, J. and Richter, A.: Microbial carbon limitation: The need for integrating microorganisms into our understanding of ecosystem carbon cycling, *Glob.*
- 945 *Chang. Biol.*, 00, 1–9, doi:10.1111/gcb.14962, 2020b.
- Soong, J. L., Castanha, C., Hicks Pries, C. E., Ofiti, N., Porras, R., Riley, W. J., Schmidt, M. W. I. and Torn, M. S.: Five years of whole-soil warming led to loss of subsoil carbon stocks and increased CO₂ efflux, *Sci. Adv.*, [7\(21\), 1–9](https://doi.org/10.1126/sciadv.abd1343), doi:10.1126/sciadv.abd1343, 2021.
- Vance, E. D., Brookes, P. C. and Jenkinson, D. S.: An extraction Method for measuring soil microbial biomass C, *Soil Biol. Biochem.*, 19(6), 703–707, doi:10.1016/0038-0717(87)90052-6, 1987.
- 950 Walker, T. W. N., Kaiser, C., Strasser, F., Herbold, C. W., Leblans, N. I. W., Wuebken, D., Janssens, I. A., Sigurdsson, B. D. and Richter, A.: Microbial temperature sensitivity and biomass change explain soil carbon loss with warming, *Nat. Clim. Chang.*, 8, 885–889, doi:10.1038/s41558-018-0259-x, 2018.
- Weijers, J. W. H., Wiesenberg, G. L. B., Bol, R., Hopmans, E. C. and Pancost, R. D.: Carbon isotopic composition of branched tetraether membrane lipids in soils suggest a rapid turnover and a heterotrophic life style of their source
- 955 organism(s), *Biogeosciences*, 7(9), 2959–2973, doi:10.5194/bg-7-2959-2010, 2010.
- Wiesenberg, G. L. B. and Gocke, M. I.: Analysis of Lipids and Polycyclic Aromatic Hydrocarbons as Indicators of Past and Present (Micro)Biological Activity, in *Hydrocarbon and lipid microbiology protocols*, edited by T. McGenity, K. Timmis, and B. Nogales, Springer, Berlin, Heidelberg, Germany. pp. 61–91, doi:10.1007/8623_2015_157, 2017.

Formatted: Font: (Default) Times New Roman, 10 pt

Deleted: in press, 2021

Willers, C., Jansen van Rensburg, P. J. and Claassens, S.: Phospholipid fatty acid profiling of microbial communities—a review of interpretations and recent applications, *J. Appl. Microbiol.*, 119(5), 1207–1218, doi:10.1111/jam.12902, 2015.

Wixon, D. L. and Balsler, T. C.: Toward conceptual clarity: PLFA in warmed soils, *Soil Biol. Biochem.*, 57, 769–774, doi:10.1016/j.soilbio.2012.08.016, 2013.

965 [Yan, D., Li, J., Pei, J., Cui, J., Nie, M. and Fang, C.: The temperature sensitivity of soil organic carbon decomposition is greater in subsoil than in topsoil during laboratory incubation, *Sci. Rep.*, 7\(1\), 1–9, doi:10.1038/s41598-017-05293-1, 2017.](#)

Zhang, B., Chen, S. Y., Zhang, J. F., He, X. Y., Liu, W. J., Zhao, Q., Zhao, L. and Tian, C. J.: Depth-related responses of soil microbial communities to experimental warming in an alpine meadow on the Qinghai-Tibet Plateau, *Eur. J. Soil Sci.*, 66(3), 496–504, doi:10.1111/ejss.12240, 2015.

970 Zosso, C. U. and Wiesenberger, G. L. B.: Methylation procedures affect PLFA results more than selected extraction parameters, *J. Microbiol. Methods*, doi:10.1016/j.mimet.2021.106164, 2021.

Formatted: Font: (Default) Times New Roman, 10 pt

Page 7: [1] Deleted Cyrill Zosso UZH 5/14/21 2:22:00 PM

Page 7: [1] Deleted Cyrill Zosso UZH 5/14/21 2:22:00 PM

Page 7: [1] Deleted Cyrill Zosso UZH 5/14/21 2:22:00 PM

Page 7: [1] Deleted Cyrill Zosso UZH 5/14/21 2:22:00 PM

Page 7: [1] Deleted Cyrill Zosso UZH 5/14/21 2:22:00 PM

Page 7: [1] Deleted Cyrill Zosso UZH 5/14/21 2:22:00 PM

Page 7: [2] Deleted Cyrill Zosso UZH 5/14/21 3:54:00 PM

Page 7: [2] Deleted Cyrill Zosso UZH 5/14/21 3:54:00 PM

Page 7: [2] Deleted Cyrill Zosso UZH 5/14/21 3:54:00 PM

Page 7: [3] Deleted Cyrill Zosso UZH 5/14/21 2:39:00 PM

Page 7: [3] Deleted Cyrill Zosso UZH 5/14/21 2:39:00 PM

Page 7: [3] Deleted Cyrill Zosso UZH 5/14/21 2:39:00 PM

Page 7: [3] Deleted Cyrill Zosso UZH 5/14/21 2:39:00 PM

Page 7: [3] Deleted Cyrill Zosso UZH 5/14/21 2:39:00 PM

Page 7: [3] Deleted Cyrill Zosso UZH 5/14/21 2:39:00 PM

Page 7: [3] Deleted	Cyrill Zosso UZH	5/14/21 2:39:00 PM
Page 7: [3] Deleted	Cyrill Zosso UZH	5/14/21 2:39:00 PM
Page 7: [3] Deleted	Cyrill Zosso UZH	5/14/21 2:39:00 PM
Page 7: [3] Deleted	Cyrill Zosso UZH	5/14/21 2:39:00 PM
Page 7: [3] Deleted	Cyrill Zosso UZH	5/14/21 2:39:00 PM
Page 7: [3] Deleted	Cyrill Zosso UZH	5/14/21 2:39:00 PM
Page 7: [3] Deleted	Cyrill Zosso UZH	5/14/21 2:39:00 PM
Page 7: [3] Deleted	Cyrill Zosso UZH	5/14/21 2:39:00 PM
Page 7: [3] Deleted	Cyrill Zosso UZH	5/14/21 2:39:00 PM
Page 7: [3] Deleted	Cyrill Zosso UZH	5/14/21 2:39:00 PM
Page 12: [4] Deleted	Cyrill Zosso UZH	5/14/21 4:47:00 PM