

5 Pairing litter decomposition with microbial community structures using the Tea Bag Index (TBI) -

10 Anne Daebeler^{1,2}, Eva Petrová¹, Elena Kinz³, Susanne Grausenburger⁴, Helene Berthold⁵, Taru Sandén⁶, and Roey Angel^{1,7} and High school students of biology project groups I, II, III from 2018-2019[†]

¹Soil & Water Research Infrastructure (SoWa), Biology Centre CAS, České Budějovice, Czechia

15 ²University of Vienna, Centre for Microbiology and Environmental Systems Science, Division of Microbial Ecology, Vienna, Austria

³Open Science - Life Sciences in Dialogue, Vienna, Austria

⁴Federal College for Viticulture and Fruit Growing, Klosterneuburg, Austria

⁵Institute for Seed and Propagating Material, Phytosanitary Service and Apiculture, Department for Seed Testing, Austrian Agency for Health and Food Safety (AGES), Vienna, Austria

20 ⁶Institute for Sustainable Plant Production, Department for Soil Health and Plant Nutrition, Austrian Agency for Health and Food Safety (AGES), Vienna, Austria

⁷Institute of Soil Biology, Biology Centre CAS, České Budějovice, Czechia

[†]A full list of authors appears at the end of the paper

25 *Correspondence to:* Roey Angel (roey.angel@bc.cas.cz) or Taru Sanden (roey.angel@bc.cas.cz) or [Taru Sanden](#))

Abstract. Including information about soil microbial communities into global decomposition models is critical for predicting and understanding how ecosystem functions may shift in response to global change. Here we combined a standardised litter bag method for estimating decomposition rates, Tea Bag Index (TBI), with high-throughput sequencing of the microbial communities colonising the plant litter in the bags. Together with students of the Federal
30 College for Viticulture and Fruit Growing, -Klosterneuburg, Austria, acting as citizen scientists, we used this approach to investigate the diversity of prokaryotes and fungi colonising recalcitrant (rooibos) and labile (green tea) plant litter buried in three different soil types and during four seasons with the aim of (i) comparing litter decomposition [decomposition rates (k) and stabilisation factors (S)] between soil types and seasons, (ii) comparing the microbial communities colonising labile and recalcitrant plant litter between soil types and seasons (iii) correlating microbial
35 diversity and taxa relative abundance patterns of colonisers with litter decomposition rates (k) and stabilisation factors (S). Stabilisation factor (S), but not decomposition rate (k), correlated with the season and was significantly lower in the summer, indicating a decomposition of a larger fraction of the organic material during the warm months. This finding highlights the necessity to include colder seasons in the efforts of determining decomposition dynamics in order to quantify nutrient cycling in soils accurately. -With our approach, we further showed selective colonisation of plant litter
40 by fungal and prokaryotic taxa sourced from the soil. The community structures of these microbial ~~colonizers~~ colonisers differed most profoundly between summer and winter, and selective enrichment of microbial orders on either rooibos or green tea hinted at indicator taxa specialized for the primary degradation of recalcitrant or labile organic matter, respectively, and rooibos litter was generally a stronger selector than green tea litter. Moreover, this study indicates an equal, if not higher, importance of fungal vs prokaryotic degraders for recalcitrant and labile plant litter decomposition.
45 Our results collectively demonstrate the importance of ~~analysing~~ analysing decomposition dynamics over multiple seasons and further testify to the potential of microbiome-resolved TBI to identify isolating the effect of the active component of the microbial community ~~involved associated with in~~ litter decomposition.

50 | [This work demonstrates the power of microbiome-resolved-TBI to give a holistic description of the litter decomposition process in soils.](#)

Introduction

Litter decomposition is one of the most important terrestrial ecosystem functions. Soil microorganisms drive this process by breaking down plant material, leading to the release of carbon into the atmosphere as CO₂ or into the soil, where it either gets sequestered or further degraded (Talbot and Treseder, 2011; Allison et al., 2013; Cotrufo et al., 2013). [Other factors governing litter decomposition include the molecular structure of the litter, its physical \(dis\)connection from the decomposer community and organo-mineral associations \(Schmidt et al., 2011\).](#) Litter decomposition, therefore, directly affects both Earth's atmosphere and soil health. Understanding this process holds the key to better agricultural management, mitigating greenhouse gas emissions, and predicting future soil carbon storage levels. However, because of the processes' complexity and our inadequate understanding of how biodiversity affects it, applying the litter decomposition process to agricultural practices and global decomposition models currently does not perform at its full potential. [Seasonality, mainly through temperature and moisture effects, has been demonstrated to affect litter decomposition directly and indirectly \(Prescott 2010\). Direct effects occur due to the high sensitivity of biological processes to temperature and water availability, and indirect effects may be the consequence of phenotypic or](#)

65 [community shift responses of the soil biota.](#) Soil microbial community structure has been hypothesised to influence process rates in soils (McGuire and Treseder, 2010; Graham et al., 2016). In a few models that linked microbial diversity and decomposition (e.g., -MIMICS, (Wieder et al., 2014) and MEMS (Cotrufo et al., 2013)), microbial diversity positively affected nutrient-cycling efficiency and ecosystem processes through either greater intensity of microbial exploitation of organic matter or functional niche complementarity.

70 Litter quality has been shown to be important for microbial community structure since both bacteria and fungi respond to litter physicochemical changes during the decay process (Aneja et al., 2006; Purahong et al., 2016). Litter biochemical traits, such as the C/N ratio and the fraction of lignin, are considered good indicators of litter quality, as they are related to nutrient availability and decomposition stage (Prescott, 2010; Talbot and Treseder, 2012). Different litter types can thus select microbial taxa that are more specialised in degrading their components. Fungi are known to produce a suite of oxidative enzymes that degrade the recalcitrant biopolymers of litter (Mathieu et al., 2013; Hoppe et al., 2015). In contrast, only a few types of bacteria degrade all lignocellulosic polymers, while most typically target simple soluble compounds (de Boer and van der Wal, 2008). Therefore, the role of bacteria in the decomposition of more recalcitrant material is still debated (Wilhelm et al., 2018). However, still little is known on how microbial communities specialise in litter types with different physical and chemical traits (Freschet et al., 2011; Pioli et al., 2020).

The community structure and functioning of microbial communities are further affected by biotic interactions (Daebeler et al., 2014; Garbeva et al., 2014; Ho et al., 2016; Wilpiszkeski et al., 2019). In natural communities, such interactions generally involve competition for space and resources (Boddy, 2000; Faust and Raes, 2012) and references therein, but may also be mutualistic. For example, it has been suggested that bacteria can facilitate the activity of decaying fungi by providing important nutrients such as nitrogen (N) and phosphorous (P) (Purahong et al., 2016). Likewise, fungi have been demonstrated to help improve the accessibility of litter for bacteria (de Boer et al., 2005). Therefore, it is likely that decomposition dynamics depend not only on microbial community structure but also on the facilitative or

competitive interactions among microbial species (Liang et al., 2017; Aleklett et al., 2021). Despite the indications of the high importance of species interactions for soil organic matter decomposition dynamics, they are not well understood, and more studies under natural conditions are needed.

Linking microbial diversity to function across different environments represents a key aspect of ecology. In this study, we used high-throughput sequencing in combination with the Tea Bag Index (TBI)-a cost-effective method to study litter decomposition using commercially available tea bags (Keuskamp et al., 2013). This combination of methods allows gaining insight into the effect of litter traits on the community structure of microbial decomposers, as well as linking soil organic matter decomposition rates with microbial population dynamics. The microbial diversity in soils is immense (Thompson et al., 2017), yet large parts of it are dormant (Lennon and Jones, 2011) or simply do not participate in litter degradation (Falkowski et al., 2008). Therefore, the buried teabags used in this study serve as “traps” for microbial litter degraders and assure that the diversity we observe is composed only of its active litter degrading and associated taxa.

Specifically, in this citizen-science-aided project, we used barcoded-amplicon high-throughput sequencing of the SSU rRNA gene (for bacteria and archaea) and the internal transcribed spacer region (ITS) for fungi to compare the microbial community structure in two different standardised litter types (rooibos and green tea) with the microbial community in three different local soil types and during four seasons, over the course of a year. We tested the extent to which litter types with different traits represent selective substrates for microbial community colonisation. Finally, we related the microbial diversity and species relative abundance patterns with two proxies (decomposition rate (k) and stabilisation factor (S)) that describe the decomposition of labile material (Keuskamp et al., 2013). ~~We generally assumed that~~ hypothesised that litter decomposition dynamics and soil microbial communities will differ between the seasons. Soil types were expected to be similar to each other given the small, geographic scale and that management practices are the same. More specifically we hypothesized that i) microbial diversity in the tea bags will correlate positively with decomposition rates and negatively with stabilisation factors, and ii) different subsets of local soil microbiota will colonise labile and more recalcitrant litters, and thus each litter type will select for a different, specialised community. To the best of our knowledge, this is the first study utilising the Tea Bag Index method in combination with a microbiome analysis to investigate how litter decomposition is linked with microbial community structure and diversity.

115 **Materials and methods**

Description of the study sites

The study site is located at the Agneshof vineyards of the agricultural college for Viticulture and Pomology in Klosterneuburg, just north of Vienna, Austria (Fig. 1). The mean annual temperature was 11.1 °C, and the mean total annual precipitation was 689 mm between 2010 and 2019 at the Agneshof weather station. We selected three study plots with three different soil types: Fluvisol, Cambisol, and Luvisol (WRB, 2014) to maximise the difference in soil characteristics. The Fluvisol and Luvisol (~~Alfisol~~) sites were cultivated with wine, whereas the Cambisol site was a set-aside grassland between vineyards. At Fluvisol and Luvisol sites, we selected one inter-row sampling area in the middle of the vineyard at least 5 m distance to the vineyard edge. In contrast, at the Cambisol, we selected a sampling area that was at least 5 m distance to the neighbouring vineyard.

125 Soil sampling and soil chemical analyses

Composite soil samples of 10-12 individual soil cores were taken from 0-10 cm depth in ~~one-two~~ (winter and spring) ~~or~~ three (summer and autumn) field replicates every three months between March 2018 and December 2018 to characterise the sites. Soils were sieved through a 2 mm stainless sieve and air-dried prior to further analyses. Soil pH was measured electrochemically (pH/mV Pocket Meter pH 340i, WTW) in 0.01 M CaCl₂ at a soil-to-solution ratio of 130 1:5 (ÖNORM L1083). Plant available phosphorous (P) and potassium (K) were determined by calcium-acetate-lactate (CAL) extraction (ÖNORM L1087). Total soil organic C concentrations of the soil samples were analysed by dry combustion in a LECO RC-612 TruMac CN at 650 °C (ÖNORM L1080; LECO Corp.). Total N was determined according to ÖNORM L1095 with elemental analysis using a CNS (carbon, nitrogen, ~~sulfur~~sulphur) 2000 SGA-410-06 at 1250 °C. KMnO₄ determination of labile carbon was analysed according to Tatzber et al. (2015). Potential nitrogen 135 mineralisation was measured by the anaerobic incubation method (Keeney, 1982), as modified according to Kandeler (1993). The soil texture was determined according to ÖNORM L1061-1 and L1062-2. For testing statistical differences in the chemical parameters between plots, samples from different seasons were pooled.

Tea Bag Index (TBI)

The Tea Bag Index [*i.e.*, the decomposition rate (*k*) and stabilisation factor (S)] was assessed according to (Keuskamp et al., 2013) between December 2017 and December 2018. In short, commercially available green tea (EAN 87 22700 140 05552 5) and rooibos tea (EAN 87 22700 18843 8) in non-woven, polypropylene mesh bags produced by Lipton (Unilever) were used as standardised litter bags. Green and rooibos teabags in eight replicate pairs (four replicate pairs for calculating the TBI parameters and four replicate pairs for molecular analysis) were weighed and buried pairwise at a depth of 8 cm for three months (Winter: December 2017-March 2018, Spring: March 2018-June 2018, Summer: June 145 2018-September 2018, Fall: September 2018-December 2018). There was a 15 cm distance between the green and rooibos tea bags within a replicate pair and at least 75 cm between the replicate pairs. Subsequently, the teabags used for calculating the TBI were retrieved, cleaned of adhering soil particles, and dried for at least three days on a warm, dry location before re-weighing. Values for *k* and S were calculated using the mass losses of green and rooibos teas, as described in (Keuskamp et al., 2013). The teabags used for molecular analysis were frozen on-site on dry ice after being 150 dug out and cleaned and transported in a frozen state to the Anaerobic and Molecular Microbiology lab at SoWa, BC CAS, České Budějovice, Czechia, for further analysis. ~~In addition, 1-3 composite soil samples from the vicinity of the burying place of the teabags were collected at each season for comparison.~~

Molecular analyses of prokaryotic and fungal community structures

DNA extraction and amplicon sequencing

155 DNA was extracted from 0.25 g of frozen tea material or soil using the DNeasy PowerSoil DNA Isolation Kit (Qiagen) according to the manufacturer's instructions. Amplicon sequencing was done using a two-step barcoding approach (Naqib et al., 2019). DNA was also extracted from two unburied green tea and rooibos teabags to estimate the microbial load and diversity already present on the tea material. The DNA extracts were then quantified using QuantiTTM PicoGreenTM dsDNA Assay Kit (Thermo) and diluted to 10 ng μl⁻¹ for use as templates for PCR amplification. The 160 V4 region of the 16S rRNA gene (16S hereafter) was amplified using primers 515F-mod-CS1 (aca ctg acg aca tgg ttc tac aGT GYC AGC MGC CGC GGT AA), 806-mod-CS2 (tacgtagcagagacttggtctGGACTACNVGGGTWTCTAAT; Walters et al., 2015) while ITS was amplified using primers ITS1f-CS1 (aactgacgacatggttctacaCTTGGTCATTTAGAGGAAGTAA) and ITS2-CS2

(tacggttagcagagacttggtctGCTGCGTTCTTCATCGATGC; Gardes and Bruns, 1993). Amplification was done in a T100
165 Thermal Cycler (Biorad) with amplification cycles ranging from 25 to 28 for 16S and 29 to 32 cycles for ITS,
depending on the amount of template. The full protocol is available online (Angel, 2021). Before processing the
samples from the experiment, we performed a preliminary test using the chloroplast blocker pPNA (PNA Bio). For this
purpose, DNA from the unburied tea bags, from two buried teabags and a soil sample was used for amplification with or
without PNA (0.25 μ M, final conc.). If PNA was used, an additional PCR step of PNA clamping (75 °C for 10 s) was
170 added in each cycle between the denaturation and primer annealing step, according to the manufacturer's instructions.
In addition, no-template PCR controls (NTC) and "blank extraction control" (DNA extraction and amplification without
a sample) were sequenced in each batch (season). A mock community (ZymoBIOMICS Microbial Community DNA
Standard II; Zymo Research) was also amplified and sequenced. Library construction and sequencing were performed
at the DNA Services Facility at the University of Illinois, Chicago, using an Illumina MiniSeq sequencer (Illumina) in
175 the 2 \times 250 cycle configuration (V2 reagent kit).

Sequence data processing and classification

Primer regions were trimmed off the amplicon sequence data using cutadapt (V2.3; Martin, 2011). Downstream
sequencing processing steps were done in R (V4.0.3; R Core Team, 2020). Quality-trimming and clustering into
amplicon sequence variants (ASVs) were done using the DADA2 pipeline (Callahan et al., 2016). For 16S, the
180 following quality filtering options were used: `no truncate, maxN = 0, maxEE = c(2, 2)`
and `truncQ = 2`. For ITS, the following options were used: `minLen=50, maxN=0, maxEE = c(2, 2)`
and `truncQ=2`. Chimera sequences were removed with `removeBimeraDenovo()` using the "consensus"
method "allowOneOff". Taxonomic classification of the 16S ASVs was done with `assignTaxonomy()` against
the SILVA database (Ref NR 99; V138.1; Quast et al., 2012), while for ITS, it was done against the UNTIE
185 database (Nilsson et al., 2018). Potential contaminant ASVs were removed using `decontam` (Davis et al., 2017),
employing the default options. Unclassified taxa and those classified as either "Eukaryota", "Chloroplast", or
"Mitochondria" (in the 16S dataset) or as "Bacteria" or "Archaea" (in the ITS dataset) were removed. In addition,
for beta-diversity analysis ASVs, appearing in <5% of the samples were removed.

Statistical analysis

190 All statistical analysis was performed in R (V4.0.3; R Core Team, 2020). Significant differences between the
decomposition rates (k), and stabilisation factors (S), ~~and the chemical parameters at the three study sites during the four
studied seasons; was were~~ determined using ANOVA followed Tukey's HSD on the estimated marginal means (Lenth,
2021); functions `emmeans()` and `-contrast()`. ~~To increase the statistical power, samples from different seasons
were pooled for testing the differences in soil parameters.~~ Spearman rank (ρ) correlations were performed to investigate
195 the relationship between soil properties and the decomposition rates, stabilisation factors, and microbial amplicon
sequence variant (ASV) richness and diversity. Sequence data handling and manipulation were done using
the `phyloseq` package (McMurdie and Holmes, 2013). For alpha-diversity analysis, all samples were subsampled
(rarefied) to the minimum sample size using a bootstrap subsampling with 1000 iterations to account for library size
differences, while for beta-diversity analysis, library size normalisation was done by converting the data to relative
200 abundance and multiplying by median sequencing depth. The Inverse Simpson's, Shannon's H diversity indices and the
Berger-Parker dominance index were calculated using the function `EstimateR()` in the `vegan` package (Oksanen et
al., 2018) and tested using ANOVA in the `stats` package, followed by a *post hoc* Tukey's HSD test on the estimated

marginal means. Variance partitioning and testing were done using PERMANOVA (Mcardle and Anderson, 2001) function `adonis()` using Horn-Morisita distances (Horn, 1966). Differences in order composition between the [soil or litter types/sample types](#) were tested similarly to STAMP (Parks et al., 2014), but written in R. Briefly, the relative abundance of the orders was compared between samples using the Kruskal-Wallis rank-sum test (`kruskal.test()` in the `stats` package), followed by the Mann-Whitney post-hoc test (`wilcox.test()` in the `stats` package), and FDR corrected using the Benjamini-Hochberg method (Benjamini and Hochberg, 1995); `p.adjust()` in the `stats` package). Differentially abundant ASVs were detected using ALDEx2 (Fernandes et al., 2013) using the option `denom = iqclr` for the `aldex.clr()` function. Differences in composition between the two teabag types and the soil were tested in a pairwise manner. Plots were generated using `ggplot2` (Wickham, 2009).

Results and discussion

Soil chemical characteristics and Tea Bag Index

[The weather during the study was typical for the region, with mean seasonal air temperatures ranging from 2 °C in the winter to 22.5 °C in the summer, and most of the rain occurring sSummer and aAutumn \(Table S1\).](#)

To be able to draw conclusions about the connections between the community structures of microbial litter decomposers, litter types and the decomposition process, we first determined the basic soil characteristics of the three study plots. The Luvisol plot exhibited the lowest contents of P, K, TOC, sand, and the highest pH (Table [S2†](#)).

Next, we determined the decomposition rate, k (which reflects the rate by which the labile fraction of the litter is decomposed), and the stabilisation factor, S (which reflects the proportion of [non-decomposed, hydrolysable litter that breaks down the labile fraction that is remaining after the incubation](#)), for all three study plots and during four seasons. Despite decomposition rates ranging from 0.008 g/g-d^{-1} at the Cambisol site to 0.025 g/g-d^{-1} at the Fluvisol site (in the summer), no significant differences could be found between sites or seasons, [neither when pooled \(\$P = 0.15\$ \), nor at each site \(\$P = 0.45\$; \(Fig. 2\).](#) The results are well within the range of summer data previously reported from Austria (Buchholz et al., 2017; Keuskamp et al., 2013; Sandén et al., 2020; ~~(~~Sandén et al., 2021). However, to the best of our knowledge, we are the first ones to report data during four seasons. There was also no correlation of any measured soil properties with the decomposition rates (data not shown), as also reported in ~~(~~Sandén et al.; (2020). These results were surprising, given the differences in the determined soil characteristics (Table [S2†](#)) and temperature between the seasons: [and point to the possibility that micro conditions in the soil play a larger role than expected in determining decomposition rates.](#)

[The stabilization factors in general were higher than presented in Keuskamp et al. \(2013\), however, this is the first time that the stabilization factors are presented for different seasons and it seems logical that the S would be higher in the colder seasons than over the summer. The summer values are well in agreement with Keuskamp et al. \(2013\), and the other seasons with Sarneel et al. \(2020\) from tundra environments and Sandén et al. \(2021\) from urban Austrian sites that both reported stabilization factors up to 0.4, which gives further support for our findings.](#) We did, however, observe significantly lower stabilisation factors in summer than in all other seasons ($p_{\text{adjusted}} \leq 0.001$). Specifically, the stabilisation factors determined at the Cambisol and Luvisol sites were significantly lower in summer than those determined for the other three seasons ($p_{\text{adjusted}} \leq 0.05$). These results indicate that the conditions during the summer months favour the decomposition of a larger fraction of the organic material, but not necessarily in a faster manner. This is in apparent contrast to the well-known relationship between temperature and decomposition rates - (see Kirschbaum,

1995 and references therein). However, one should consider that: 1. temperature sensitivity of [the](#) decomposition rate is much higher at low [temperaturetemp](#). 2. that the decomposition rate is also heavily affected by moisture which could counterbalance the effect of temperature. Similarly, (Elumeeva et al., 2018) also found a correlation of S but not of k -to various edaphic factors. Notably, soil moisture, pH and altitude did not affect k (but were correlated with S). Since S measures “how much” (rather than “how fast”) ~~complex organic matter decomposes of the labile litter fraction is~~ [stabilized material is remaining after incubation](#), it can be assumed that S is more sensitive than k to the composition of microbial communities that are active at the time of decomposition. This is because the underlying [processes amounting to process of S](#) involves the concerted (discrete) action of several microbial guilds, each [specializing](#) in decomposing one or more substrates sequentially -(Zheng et al., 2021; Glassman et al., 2018). ~~Temperature and soil moisture (and hence seasonality) have been demonstrated to affect litter decomposition dynamics (Prescott, 2010).~~

[Establishment of a NGS amplicon sequencing protocol to be used with TBI DNA extraction and sequencing statistics](#)

Before investigating the microbial communities ~~involved in the litter degradation measured by the Tea Bag Index (TBI) method colonising the teabags~~, we extracted DNA from unburied teabags serving as negative controls and performed rRNA gene amplicon sequencing (16S and ITS regions). DNA yields were similar between buried and the unburied teabags and averaged 6.1 ± 12.9 and 23.0 ± 14.0 mg g⁻¹, probably because, as expected, most of the DNA originated from the plant cells (data not shown). A preliminary study using the chloroplast blocker pPNA was carried out to estimate the effect of plant chloroplast on the sequencing output (what proportion of the sequences are dominated by chloroplast). As Table S13 shows, only the unburied tea material had a significant portion of chloroplast reads (64.5% and 15.4% for green tea and rooibos, respectively), while after three months in the ground, no chloroplast reads were detected (most likely due to a combination of microbial colonisation and chloroplast DNA degradation). Using the pPNA blocker nearly eliminated the number of chloroplast reads while at the same time not biasing the community composition in the samples (Fig. S1). Nevertheless, since chloroplasts were undetected in the buried teabags, pPNA was not used in subsequent sample processing. -Fig. S1 also shows that, as expected, the microbial load on the unburied tea material was minimal and yielded only about 5% of the reads after quality filtering. Such a low microbial load is expected for above-ground plant parts (e.g. Chen et al., 2020; Knorr et al., 2019).

To then study the prokaryotic and fungal communities potentially ~~involved associated in with~~ litter degradation, we extracted DNA from soil and triplicate rooibos and green tea teabags buried for three months for each season at each site [and performed rRNA gene amplicon sequencing.](#)

270 **Richness and diversity of prokaryotic and fungal communities in tea bags and soils**

Sequencing the prokaryotic 16S rRNA gene and the fungal ITS region and downstream data processing yielded a total of 16,100 16S ASVs and 3,685 ITS ASVs. After removing all ASVs with a prevalence of <5% of the samples, 4217 16S ASVs and 402 ITS ASVs remained. As expected, archaea were rare and comprised only about 0.9% of the reads. -At all three sites, the observed prokaryotic and fungal ASV richness (*i.e.*, the observed number of prokaryotic and fungal ASVs) was roughly twice as high in the soil samples than in teabag samples (Fig. S2). Likewise, the microbial diversity, as estimated by the Inverse Simpson's, Shannon and Berger-Parker indexes, was generally significantly higher in the soil samples than in the teabag samples. There was, however, no significant difference between rooibos and green tea bags in terms of prokaryotic and fungal ASV richness or diversity. These findings indicate selective microbial colonisation of both the labile and the more recalcitrant litter sourced from the surrounding soil during all seasons.

280 Both the Fluvisol and the Cambisol site teabags buried in summer harboured a significantly richer prokaryotic community than those buried in other seasons. Such seasonal differences were not observed with the fungal communities. Similar to the observed differences in richness, the biodiversity of prokaryotic communities detected in the teabags was often significantly higher in summer samples than in all other seasons. This hints that there are more distinct prokaryotic species capable of colonising and degrading litter in summer than in the other seasons. An explanation for this observation could be the activation of decomposing prokaryotic soil populations by summer conditions such as elevated temperature (Kirschbaum, 1995; Allison et al., 2010). Finally, the prokaryotic ASV richness and diversity of the communities that colonised the teabags were negatively correlated with the stabilization factor S ($p < 0.01$; correlation factor $\rho = -0.60$ and $p < 0.01$; correlation factor $\rho = -0.54$, respectively). These findings suggest that less inhibition of litter decomposition occurred in the summer season, in which richer and more diverse prokaryotic communities were ~~involved in~~ associated with the degradation. With these data, we can partially confirm our hypothesis of a positive correlation between microbial diversity and litter decomposition. Possibly, a positive relationship between microbial diversity and litter decomposition is prevalent in many soil types, as it has also been experimentally established in a Cambisol (Maron et al., 2018).

The richness and diversity of fungal ASVs were generally comparable across the seasons at all sites, except for a higher richness at the Cambisol site in winter compared to the other seasons. This could be explained by the hyphae growth form of many fungi, which allow them to span various microsites in the heterogeneous soil environment and make them less sensitive to chemical gradients and seasonal changes (Yuste et al., 2010).

Selective colonisation of tea-bags by prokaryotic and fungal soil populations

After three months of burial, the community structures of prokaryotes and fungi detected in tea bags were significantly different from those detected in soil (Table S4, Fig. 3Fig-S3). Moreover, the differential abundance analysis clearly showed enrichment of about a third of the 16S ASVs and 14-20% of the ITS ASVs in the teabags compared to the soil (Fig. S4). Therefore, as has been observed before in various soil systems and with a range of different litter types (Aneja et al., 2006; Bray et al., 2012; Albright et al. 2018; Yan et al., 2018; Wei et al., 2020; Aneja et al., 2006, Albright et al. 2018), we conclude that the litter material in the teabags selected for colonisation by a minority-sizeable portion of the bacterial, archaeal and fungal population acting as the active litter decomposers and associated populations. While fungi colonise new patches using hyphal growth, prokaryotes depend on mechanisms such as adhesion to hyphae, motility, or passive diffusion in water. Interestingly, Albright et al. (2019) have shown that unicellular bacteria and fungi do not differ in their dispersal abilities. Successful colonisation of the teabags is related to microbial traits such as growth rate, mobility, adhesive ability and competitive ability (Albright et al. 2018) and does not exclusively indicate the degrading ability of a microbe. The results presented here therefore largely reflect the dynamics of may be biased towards the more fast growing, strong competitors, which disperse easily and may overlook contributions of weaker slower degraders in soil. Comparing the green tea with the rooibos samples, we could detect a subgroup of ca. 4.2% and 2.5% of the 16S rRNA gene ASVs that preferentially colonised either the green tea or rooibos teabags. In contrast, only four ITS ASVs differed between the green tea and rooibos samples, indicating non-preferential colonisation. For both prokaryotes and fungi, sample type (*i.e.*, soil green tea or rooibos) soil or litter type explained the largest fraction of the variance in the community composition (38 and 23%, respectively; Table S42). Although, not surprisingly, this was driven mainly by the differences between soil and teabag communities. However, the difference between green tea and rooibos was not negligible and explained 13 and 9% of the variance in a pairwise comparison for prokaryotes and fungi, respectively (Table S42, Fig. S3). -The season was also a major factor, explaining -20 and 22%

320 of the variance, respectively, and driven mostly by the difference between summer and winter (27 and 29% of the variance, respectively, Table S42, Fig. S4). In contrast, soil type had only little effect, explaining only 3 and 5% of the variance, respectively. This ~~is in contrast to contrasts with~~ the recent findings of (Pioli et al., 2020), in which a large effect of soil type on the community composition was reported, though not surprising considering that this study was performed on a very local scale, ~~with identical climate, and similar soil types and management practices.~~

325 Further interested in the identity and possible colonisation preferences of the microbial decomposers, we compared the relative abundance of dominant orders between the different teabags, the soil types and between the teabag communities in the summer vs winter, in a pairwise manner. This analysis allowed us to identify specific bacterial and fungal lineages that exhibited distinct colonisation patterns and were enriched in samples from the more labile, green tea or the more recalcitrant rooibos bags. ~~In contrast to our hypothesis (different litter types will select for different microbial coloniszers), many of the detected microbes were either equally selected or deselected by both tea types.~~

Most strikingly, members of the Pseudomonadales, Sphingobacteriales, were the most enriched in both green tea and rooibos ~~tea bagssamples~~ as compared to the soil ~~samples~~ from the same sites with differences of 11.4% and -9.4% for Pseudomonadales, and 8.2% and 8.3% for Sphingobacteriales, ~~respectively~~ (Fig. 43a, c). Additionally, ~~green tea samples harboured 7.6% and 6.7% more Flavobacteriales, and~~ ~~Burkholderiales~~~~Betaproteobacteriales~~ ~~also showed higher relative abundances respectively,~~ than the ~~accompanyingsurrounding~~ soil ~~samples~~ (Fig. 43a). Rooibos teabags, on the other hand, were significantly richer in ~~Betaproteobacteriales~~ by 4.4% and in Rhizobiales by 4.2% (Fig. 3e). Similar increases in relative abundance of Pseudomonadales, Flavobacteriales, Sphingobacteriales, Micrococcales have been observed in straw decomposing soil microcosms (Jiménez et al., 2014; Guo et al., 2020). ~~Members of Pseudomonadales, Flavobacteriales and Rhizobiales are well known to have the capacity to degrade plant lignin, (hemi-)cellulose or carboxymethyl cellulose (Koga et al., 1999; McBride et al., 2009; Wang et al., 2013; Talia et al., 2012; Jackson et al., 2017). Furthermore, Pseudomonadales and Flavobacteriales can be involved in the degradation of furanic compounds (Jiménez et al., 2013; López et al., 2004). The increased presence of Sphingobacteriales may be explained by their capability to produce β -glucosidases that remove the cello-oligosaccharides produced by polymer degraders (Matsuyama et al., 2008) and is considered a critical and rate-limiting step in cellulose degradation (du Plessis et al., 2009). Indeed, soils with high β -glucosidase activity were also found to be dominated by members of the Sphingobacteriales (particularly from the Chitinophagaceae family; Bailey et al., 2013). Merely the bacterial orders Cytophagales, Enterobacteriales and Rhizobiales exhibited relative abundance patterns indicative of a selection only by rooibos or green tea, as we hypothesized (Fig. 43a,c). Members of Pseudomonadales, Flavobacteriales and Rhizobiales are well known to have the capacity to degrade plant lignin, (hemi-)cellulose or carboxymethyl cellulose (Koga et al., 1999; McBride et al., 2009; Wang et al., 2013; Talia et al., 2012; Jackson et al., 2017). Furthermore, Pseudomonadales and Flavobacteriales can be involved in the degradation of furanic compounds (Jiménez et al., 2013; López et al., 2004). The increased presence of Sphingobacteriales may be explained by their capability to produce β -glucosidases that remove the cello-oligosaccharides produced by polymer degraders (Matsuyama et al., 2008) and is considered a critical and rate-limiting step in cellulose degradation (du Plessis et al., 2009). Indeed, soils with high β -glucosidase activity were also found to be dominated by members of the Sphingobacteriales (particularly from the Chitinophagaceae family; Bailey et al., 2013).~~

We further observed significant, ~~selective~~ enrichments of fungal orders in both teabag types. Members of the Hypocreales had a 20% higher relative abundance in green tea than in soil but were ~~7% depleted~~~~not enriched~~ in the rooibos ~~teabags~~~~compared to the soil~~ (Fig. 43b). In contrast, Helotiales were ~~only~~ enriched in ~~the~~ rooibos ~~sample~~~~teabags~~

360 by 12% (Fig. 43d). Hypocreales are common saprophytic fungi and are known to produce cellobiohydrolases and endoglucanases necessary for the depolymerisation of celluloses (Lynd et al., 2002; Martinez et al., 2008). Helotiales are abundant, cellulolytic soil fungi that have been shown to specialise in degrading recalcitrant organic carbon (Newsham et al., 2018; Thomasgbif, 2020). Our findings could point towards members of the exclusively enriched orders being specialized primary degraders of either labile or recalcitrant organic matter and not associated scavengers of degradation products. Since the green tea litter contains a higher hydrolysable fraction and a lower C:N ratio (Keuskamp et al., 2013), we assume the Enterobacteriales and Hypocreales, which were exclusively enriched in green tea samples, were involved in the degradation of more labile compounds such as cellulose. Cytophagales, Rhizobiales and Helotiales, which were exclusively selected by rooibos tea on the other hand, may be important primary degraders of more recalcitrant organic matter. Members of these five orders could therefore possibly serve as indicator species in future decomposition studies. This can explain their prevalence in the rooibos compared to the green tea samples.

375 ~~An indication of a preference for the decomposition of more labile litter, or for an association with degraders of such material, is the higher relative abundance of the bacterial orders Pseudomonadales and Micrococcales in green tea than in rooibos samples by 2.8% and 3.6%, respectively (Fig. 3e) and of the fungal Hypocreales by 26.6% (Fig. 3f). On the other hand, in the more recalcitrant rooibos samples, Rhizobiales species were significantly more abundant by 5.1% (Fig. 3e). These findings support our hypothesis of a selection for specific microbial species by the different litter present in green tea and rooibos. Since the green tea litter contains a higher hydrolysable fraction and a lower C:N ratio (Keuskamp et al., 2013), we assume the Pseudomonadales and Micrococcales, which were significantly enriched in green tea samples, were involved in the degradation of more labile compounds such as cellulose.~~

380

~~The selection of microbial degraders colonising the litter inside the teabags resulted in a stronger relative enrichment of fungal than bacterial orders. Furthermore, fungal community structures showed a stronger response than bacterial communities to the different litter types, as also observed by (Habtewold et al., 2020). Our results, therefore, indicate an equal (if not higher) importance of fungi for the degradation of both labile and recalcitrant litter in the studied soils.~~

385 **Conclusions**

In contrast to our ~~expectations~~hypothesis, the different seasons did not ~~affect~~display different the litter decomposition ~~rates~~rate, but they did differ in ~~how much~~the extent to which the hydrolyzable litter fraction was degraded ~~organic carbon could be degraded~~. At the same time, microbial richness and diversity of litter-colonising degraders were positively correlated with the fraction of degraded organic carbon, indicating a positive relationship between litter
390 degradation and microbial biodiversity in soil. Microbial colonisation of the tea litter was substrate-selective and season-dependent for prokaryotes and fungi. On average, about 28-30% of the prokaryotic ASVs and 14-19% of the fungal ASVs preferentially colonised the rooibos and green tea, respectively. However, their exact identity varied between seasons, especially between the summer and winter. A total of five microbial orders were identified as possible indicator species through their exclusive colonis~~zation~~ of either recalcitrant (rooibos) or labile (green tea) litter. This
395 work demonstrates the power of microbiome-resolved-TBI to give a holistic description of the litter decomposition process in soils.

Code availability

The scripts to reproduce this and all downstream statistical analysis steps are available online under <https://github.com/roey-angel/TeaTime4Schools>.

400 **Data availability**

Raw sequence reads have been deposited in the Sequence Read Archive under BioProject accession no. PRJNA765214.

Author contributions

TS, RA, and AD designed the study. TS, HB and EK performed sampling with support from students of biology projects groups I, II, and III. EK developed lab protocols, EP optimised the lab protocols and performed the DNA
405 extraction and PCR amplification. TS, RA, and AD analysed the data. The manuscript was written by AD, TS, and RA with contributions from all co-authors. We thank Michael Schwarz for preparing the map in Figure 1.

Team list

Group I: Fabian Bauer, Lorenz Baumgartner, Lisa Brandl, Michael Buchmayer, Karl Daschl, Rene Dietrich, Stefan Ebner, Margarete Jäger, Michaela Kiss, Lea Kneissl, Katja Langmann, Elias Mauerhofer, Jakob Paschinger, Tobias
410 Rabl, Sophie Schachenhuber, Josef Schmid, Marlene Steinbatz. **Group II:** Mathias Ettenauer, Lorenz Hauck, Mathias Herl, Johannes Honsig, Thomas Gangl, Anja Glaser, Gabriel Hümer, Georg Lenzatti, Stefan Lichtscheidl, Lena Mayer, Valentin Oppenauer, Jacob Rennhofer, Katharina Schönner, Ciara Seywald. **Group III:** -Jan Gamzunov, Anna Hess, Christoph Schurm, Klaus Stacher, Lena Ungersböck, Florian Valachovich, Mirjam Weissmann, Marius Wittek, Jennifer Wosak, Valentin Zahel, Lucas Züger.

415

Financial support

This work was supported by the Austrian Ministry of Education, Science and Research (BMBWF) through a Sparkling Science Grant to TS, HB, EK, AD, RA and SG (SPA 06/044 TeaTime4Schools). In addition, EP and RA were supported by the Czech MEYS (EF16_013/0001782 - SoWa Ecosystems Research). AD was supported by the FWF grant T938.

420

References

- 425 [Albright, M. B. N., Chase, A. B., and Martiny, J. B. H.: Experimental Evidence that Stochasticity Contributes to Bacterial Composition and Functioning in a Decomposer Community, 10, e00568-19, , 2019](#)
[Albright, M.B.N., Martiny, J.B.H.: Dispersal alters bacterial diversity and composition in a natural community, The ISME Journal 12\(1\), 296-299, doi:10.1038/ismej.2017.161, 2018.](#)
- Aleklett, K., Ohlsson, P., Bengtsson, M. and Hammer, E. C.: Fungal foraging behaviour and hyphal space exploration in
430 micro-structured Soil Chips, *The ISME Journal* 15(6),1782-1793,doi:10.1038/s41396-020-00886-7, 2021.
- Allison, S. D., Lu, Y., Weihe, C., Goulden, M. L., Martiny, A. C., Treseder, K. K. and Martiny, J. B. H.: Microbial abundance and composition influence litter decomposition response to environmental change, *Ecology*, 94(3), 714–725, doi:10.1890/12-1243.1, 2013.
- Allison, S. D., Wallenstein, M. D. and Bradford, M. A.: Soil-carbon response to warming dependent on microbial
435 physiology, *Nature Geoscience*, 3(5), 336–340, doi:10.1038/ngeo846, 2010.
- Aneja, M. K., Sharma, S., Fleischmann, F., Stich, S., Heller, W., Bahnweg, G., Munch, J. C. and Schloter, M.: Microbial Colonization of Beech and Spruce LitterInfluence of Decomposition Site and Plant Litter Species on the Diversity of Microbial Community, *Microbial Ecology*, 52(1), 127–135, doi:10.1007/s00248-006-9006-3, 2006.
- Angel, R.: General Bacteria and Archaea 16S-rRNA (515Fmod-806Rmod) for Illumina Amplicon Sequencing V.4, ,
440 doi:10.17504/protocols.io.bsxanfie, 2021.
- Bailey, V. L., Fansler, S. J., Stegen, J. C. and McCue, L. A.: Linking microbial community structure to β -glucosidic function in soil aggregates., *ISME J*, 7, 2044–53, 2013.
- Benjamini, Y. and Hochberg, Y.: Controlling the False Discovery Rate: A Practical and Powerful Approach to Multiple Testing, *Journal of the Royal Statistical Society: Series B (Methodological)*, 57(1), 289–300, doi:10.1111/j.2517-
445 6161.1995.tb02031.x, 1995.
- Boddy, L.: Interspecific combative interactions between wood-decaying basidiomycetes, *FEMS Microbiology Ecology*, 31(3), 185–194, doi:10.1111/j.1574-6941.2000.tb00683.x, 2000.
- Bray, S. R., Kitajima, K. and Mack, M. C.: Temporal dynamics of microbial communities on decomposing leaf litter of 10 plant species in relation to decomposition rate, *Soil Biology and Biochemistry*, 49, 30–37,
450 doi:10.1016/j.soilbio.2012.02.009, 2012.
- Buchholz, J., Querner, P., Paredes, D., Bauer, T., Strauss, P., Guernion, M., Scimia, J., Cluzeau, D., Burel, F., Kratschmer, S., Winter, S., Potthoff, M. and Zaller, J. G.: Soil biota in vineyards are more influenced by plants and soil quality than by tillage intensity or the surrounding landscape, *Scientific Reports*, 7(1), doi:10.1038/s41598-017-17601-w, 2017.
- 455 Callahan, B. J., McMurdie, P. J., Rosen, M. J., Han, A. W., Johnson, A. J. A. and Holmes, S. P.: DADA2: High-resolution sample inference from Illumina amplicon data, *Nature Methods*, 13(7), 581–583, doi:10.1038/nmeth.3869, 2016.
- Chen, T., Nomura, K., Wang, X., Sohrabi, R., Xu, J., Yao, L., Paasch, B. C., Ma, L., Kremer, J., Cheng, Y., Zhang, L., Wang, N., Wang, E., Xin, X.-F. and He, S. Y.: A plant genetic network for preventing dysbiosis in the phyllosphere,
460 *Nature*, 580(7805), 653–657, doi:10.1038/s41586-020-2185-0, 2020.
- Cotrufo, M. F., Wallenstein, M. D., Boot, C. M., Deneff, K. and Paul, E.: The Microbial Efficiency-Matrix Stabilization (MEMS) framework integrates plant litter decomposition with soil organic matter stabilization: do labile plant inputs form stable soil organic matter?, *Global Change Biology*, 19(4), 988–995, doi:10.1111/gcb.12113, 2013.

- Daebeler, A., Bodelier, P. L. E., Yan, Z., Hefting, M. M., Jia, Z. and Laanbroek, H. J.: Interactions between
 465 Thaumarchaea Nitrospira and methanotrophs modulate autotrophic nitrification in volcanic grassland soil, *The ISME Journal*, 8(12), 2397–2410, doi:10.1038/ismej.2014.81, 2014.
- Davis, N. M., Proctor, D. M., Holmes, S. P., Relman, D. A. and Callahan, B. J.: Simple statistical identification and removal of contaminant sequences in marker-gene and metagenomics data, , doi:10.1101/221499, 2017.
- Elumeeva, T. G., Onipchenko, V. G., Akhmetzhanova, A. A., Makarov, M. I. and Keuskamp, J. A.: Stabilization versus
 470 decomposition in alpine ecosystems of the Northwestern Caucasus: The results of a tea bag burial experiment, *Journal of Mountain Science*, 15(8), 1633–1641, doi:10.1007/s11629-018-4960-z, 2018.
- Falkowski, P. G., Fenchel, T. and DeLong, E. F.: The Microbial Engines That Drive Earths Biogeochemical Cycles, *Science*, 320(5879), 1034–1039, doi:10.1126/science.1153213, 2008.
- Faust, K. and Raes, J.: Microbial interactions: from networks to models, *Nature Reviews Microbiology*, 10(8), 538–550,
 475 doi:10.1038/nrmicro2832, 2012.
- Fernandes, A. D., Macklaim, J. M., Linn, T. G., Reid, G. and Gloor, G. B.: ANOVA-like differential expression (ALDEx) analysis for mixed population RNA-Seq., *PLoS One*, 8, e67019, 2013.
- Freschet, G. T., Weedon, J. T., Aerts, R., Hal, J. R. van and Cornelissen, J. H. C.: Interspecific differences in wood decay rates: insights from a new short-term method to study long-term wood decomposition, *Journal of Ecology*,
 480 100(1), 161–170, doi:10.1111/j.1365-2745.2011.01896.x, 2011.
- Garbeva, P., Hordijk, C., Gerards, S. and Boer, W. de: Volatile-mediated interactions between phylogenetically different soil bacteria, *Frontiers in Microbiology*, 5, doi:10.3389/fmicb.2014.00289, 2014.
- Gardes, M. and Bruns, T. D.: ITS primers with enhanced specificity for basidiomycetes–application to the identification of mycorrhizae and rusts., *Mol Ecol*, 2, 113–8, 1993.
- 485 Glassman, S. I., Weihe, C., Li, J., Albright, M. B. N., Looby, C. I., Martiny, A. C., Treseder, K. K., Allison, S. D. and Martiny, J. B. H.: Decomposition responses to climate depend on microbial community composition, *Proceedings of the National Academy of Sciences*, 115(47), 11994–11999, doi:10.1073/pnas.1811269115, 2018.
- Graham, E. B., Knelman, J. E., Schindlbacher, A., Siciliano, S., Breulmann, M., Yannarell, A., Beman, J. M., Abell, G., Philippot, L., Prosser, J., Foulquier, A., Yuste, J. C., Glanville, H. C., Jones, D. L., Angel, R., Salminen, J., Newton, R.
 490 J., Bürgmann, H., Ingram, L. J., Hamer, U., Siljanen, H. M. P., Peltoniemi, K., Potthast, K., Bañeras, L., Hartmann, M., Banerjee, S., Yu, R.-Q., Nogaro, G., Richter, A., Koranda, M., Castle, S. C., Goberna, M., Song, B., Chatterjee, A., Nunes, O. C., Lopes, A. R., Cao, Y., Kaisermann, A., Hallin, S., Strickland, M. S., Garcia-Pausas, J., Barba, J., Kang, H., Isobe, K., Papaspyrou, S., Pastorelli, R., Lagomarsino, A., Lindström, E. S., Basiliko, N. and Nemergut, D. R.: Microbes as Engines of Ecosystem Function: When Does Community Structure Enhance Predictions of Ecosystem
 495 Processes?, *Frontiers in Microbiology*, 7, doi:10.3389/fmicb.2016.00214, 2016.
- Guo, T., Zhang, Q., Ai, C., Liang, G., He, P., Lei, Q. and Zhou, W.: Analysis of microbial utilization of rice straw in paddy soil using a DNA-SIP approach, *Soil Science Society of America Journal*, 84(1), 99–114, doi:10.1002/saj2.20019, 2020.
- ~~Habtewold, J. Z., Helgason, B. L., Yanni, S. F., Janzen, H. H., Ellert, B. H. and Gregorich, E. G.: Litter composition has
 500 stronger influence on the structure of soil fungal than bacterial communities, *European Journal of Soil Biology*, 98,
 103190, doi:10.1016/j.ejsobi.2020.103190, 2020.~~
- Ho, A., Angel, R., Veraart, A. J., Daebeler, A., Jia, Z., Kim, S. Y., Kerckhof, F.-M., Boon, N. and Bodelier, P. L. E.: Biotic Interactions in Microbial Communities as Modulators of Biogeochemical Processes: Methanotrophy as a Model System, *Frontiers in Microbiology*, 7, doi:10.3389/fmicb.2016.01285, 2016.

- 505 Hoppe, B., Purahong, W., Wubet, T., Kahl, T., Bauhus, J., Arnstadt, T., Hofrichter, M., Buscot, F. and Krüger, D.: Linking molecular deadwood-inhabiting fungal diversity and community dynamics to ecosystem functions and processes in Central European forests, *Fungal Diversity*, 77(1), 367–379, doi:10.1007/s13225-015-0341-x, 2015.
- Horn, H. S.: Measurement of Overlap in Comparative Ecological Studies, *The American Naturalist*, 100(914), 419–424, doi:10.1086/282436, 1966.
- 510 Jackson, C. A., Couger, M. B., Prabhakaran, M., Ramachandriya, K. D., Canaan, P. and Fathepure, B. Z.: Isolation and characterization of *Rhizobium* sp. strain YS-1r that degrades lignin in plant biomass, *Journal of Applied Microbiology*, 122(4), 940–952, doi:10.1111/jam.13401, 2017.
- Jiménez, D. J., Korenblum, E. and Elsas, J. D. van: Novel multispecies microbial consortia involved in lignocellulose and 5-hydroxymethylfurfural bioconversion, *Applied Microbiology and Biotechnology*, 98(6), 2789–2803, doi:10.1007/s00253-013-5253-7, 2013.
- 515 Jiménez, D., Dini-Andreote, F. and Elsas, J. van: Metataxonomic profiling and prediction of functional behaviour of wheat straw degrading microbial consortia, *Biotechnology for Biofuels*, 7(1), 92, doi:10.1186/1754-6834-7-92, 2014.
- Kandeler, E. (1993). Bestimmung der N-Mineralisation im anaeroben Brutversuch. In F. Schinner, R. Öhlinger, E. Kandeler, & R. Margesin (Eds.), *Bodenbiologische Arbeitsmethoden (2. Auflage ed., pp. 160-161)*. Berlin, Heidelberg, Germany: Springer Verlag.
- 520 Keeney, D. R. (1982). Nitrogen availability indices. In A. L. Page, R. H. Millet, & D. R. Keeney (Eds.), *Methods of Soil Analysis. Part II. (2nd ed., Vol. Agronomy Monograph No 9, pp. 711-730)*. Madison, US: American Society of Agronomy.
- Keuskamp, J. A., Dingemans, B. J. J., Lehtinen, T., Sarneel, J. M. and Hefting, M. M.: Tea Bag Index: a novel approach to collect uniform decomposition data across ecosystems, edited by H. Muller-Landau, *Methods in Ecology and Evolution*, 4(11), 1070–1075, doi:10.1111/2041-210x.12097, 2013.
- Kirschbaum, M. U. F.: The temperature dependence of soil organic matter decomposition and the effect of global warming on soil organic C storage, *Soil Biology and Biochemistry*, 27(6), 753–760, doi:10.1016/0038-0717(94)00242-s, 1995.
- 530 Knorr, K., Jørgensen, L. N. and Nicolaisen, M.: Fungicides have complex effects on the wheat phyllosphere mycobiome, edited by S. Sarrocco, *PLOS ONE*, 14(3), e0213176, doi:10.1371/journal.pone.0213176, 2019.
- Koga, S., Ogawa, J., Choi, Y.-M. and Shimizu, S.: Novel bacterial peroxidase without catalase activity from *Flavobacterium meningosepticum*: purification and characterization, *Biochimica et Biophysica Acta (BBA) - Protein Structure and Molecular Enzymology*, 1435(1-2), 117–126, doi:10.1016/s0167-4838(99)00190-9, 1999.
- 535 Lennon, J. T. and Jones, S. E.: Microbial seed banks: the ecological and evolutionary implications of dormancy., *Nat Rev Microbiol*, 9, 119–30, 2011.
- Lenth, R. V.: emmeans: Estimated Marginal Means, aka Least-Squares Means. [online] Available from: <https://CRAN.R-project.org/package=emmeans>, 2021.
- Liang, C., Schimel, J. P. and Jastrow, J. D.: The importance of anabolism in microbial control over soil carbon storage, *Nature Microbiology*, 2(8), doi:10.1038/nmicrobiol.2017.105, 2017.
- 540 Lynd, L. R., Weimer, P. J., van, Z. W. H. and Pretorius, I. S.: Microbial cellulose utilization: fundamentals and biotechnology., *Microbiol Mol Biol Rev*, 66, 506–77, table of contents, 2002.
- López, M. J., Nichols, N. N., Dien, B. S., Moreno, J. and Bothast, R. J.: Isolation of microorganisms for biological detoxification of lignocellulosic hydrolysates, *Applied Microbiology and Biotechnology*, 64(1), 125–131, doi:10.1007/s00253-003-1401-9, 2004.
- 545

- Maron, P.-A., Sarr, A., Kaisermann, A., Lévêque, J., Mathieu, O., Guigue, J., Karimi, B., Bernard, L., Dequiedt, S., Terrat, S., Chabbi, A. and Ranjard, L.: High Microbial Diversity Promotes Soil Ecosystem Functioning, edited by H. L. Drake, *Applied and Environmental Microbiology*, 84(9), doi:10.1128/aem.02738-17, 2018.
- Martin, M.: Cutadapt removes adapter sequences from high-throughput sequencing reads, *EMBNet.journal*, 17(1), 10, 550 doi:10.14806/ej.17.1.200, 2011.
- Martinez, D., Berka, R. M., Henrissat, B., Saloheimo, M., Arvas, M., Baker, S. E., Chapman, J., Chertkov, O., Coutinho, P. M., Cullen, D., Danchin, E. G., Grigoriev, I. V., Harris, P., Jackson, M., Kubicek, C. P., Han, C. S., Ho, I., Larrondo, L. F., de, L. A. L., Magnuson, J. K., Merino, S., Misra, M., Nelson, B., Putnam, N., Robbertse, B., Salamov, A. A., Schmoll, M., Terry, A., Thayer, N., Westerholm-Parvinen, A., Schoch, C. L., Yao, J., Barabote, R., Nelson, M. A., 555 Detter, C., Bruce, D., Kuske, C. R., Xie, G., Richardson, P., Rokhsar, D. S., Lucas, S. M., Rubin, E. M., Dunn-Coleman, N., Ward, M. and Brettin, T. S.: Genome sequencing and analysis of the biomass-degrading fungus *Trichoderma reesei* (syn. *Hypocrea jecorina*), *Nat Biotechnol*, 26, 553–60, 2008.
- Mathieu, Y., Gelhaye, E., Dumarçay, S., Gérardin, P., Harvengt, L. and Buée, M.: Selection and validation of enzymatic activities as functional markers in wood biotechnology and fungal ecology, *Journal of Microbiological Methods*, 92(2), 560 157–163, doi:10.1016/j.mimet.2012.11.017, 2013.
- Matsuyama, H., Katoh, H., Ohkushi, T., Satoh, A., Kawahara, K. and Yumoto, I.: *Sphingobacterium kitahiroshimense* sp. nov. isolated from soil, *INTERNATIONAL JOURNAL OF SYSTEMATIC AND EVOLUTIONARY MICROBIOLOGY*, 58(7), 1576–1579, doi:10.1099/ij.s.0.65791-0, 2008.
- McBride, M. J., Xie, G., Martens, E. C., Lapidus, A., Henrissat, B., Rhodes, R. G., Goltsman, E., Wang, W., Xu, J., 565 Hunnicutt, D. W., Staroscik, A. M., Hoover, T. R., Cheng, Y.-Q. and Stein, J. L.: Novel Features of the Polysaccharide-Digesting Gliding Bacterium *Flavobacterium johnsoniae* as Revealed by Genome Sequence Analysis, *Applied and Environmental Microbiology*, 75(21), 6864–6875, doi:10.1128/aem.01495-09, 2009.
- McGuire, K. L. and Treseder, K. K.: Microbial communities and their relevance for ecosystem models: Decomposition as a case study, *Soil Biology and Biochemistry*, 42(4), 529–535, doi:10.1016/j.soilbio.2009.11.016, 2010.
- 570 McMurdie, P. J. and Holmes, S.: phyloseq: An R Package for Reproducible Interactive Analysis and Graphics of Microbiome Census Data, edited by M. Watson, *PLoS ONE*, 8(4), e61217, doi:10.1371/journal.pone.0061217, 2013.
- Mcardle, B. and Anderson, M.: Fitting Multivariate Models to Community Data: A Comment on Distance-Based Redundancy Analysis., *Ecology*, 82(1), 290–297, doi:10.1890/0012-9658(2001)082[0290:fmmtcd]2.0.co;2, 2001.
- Naqib, A., Poggi, S. and Green, S. J.: Deconstructing the Polymerase Chain Reaction II: an improved workflow and 575 effects on artifact formation and primer degeneracy., *PeerJ*, 7, e7121, 2019.
- Newsham, K. K., Garnett, M. H., Robinson, C. H. and Cox, F.: Discrete taxa of saprotrophic fungi respire different ages of carbon from Antarctic soils, *Scientific Reports*, 8(1), doi:10.1038/s41598-018-25877-9, 2018.
- Nilsson, R. H., Larsson, K.-H., Taylor, A. F. S., Bengtsson-Palme, J., Jeppesen, T. S., Schigel, D., Kennedy, P., Picard, K., Glöckner, F. O., Tedersoo, L., Saar, I., Kõljalg, U. and Abarenkov, K.: The UNITE database for molecular 580 identification of fungi: handling dark taxa and parallel taxonomic classifications, *Nucleic Acids Research*, 47(D1), D259–D264, doi:10.1093/nar/gky1022, 2018.
- Oksanen, J., Blanchet, F. G., Friendly, M., Kindt, R., Legendre, P., McGlinn, D., Minchin, P. R., O’Hara, R. B., Simpson, G. L., Solymos, P., Stevens, M. H. H., Szoecs, E. and Wagner, H.: *Vegan: Community Ecology Package*, [online] Available from: <https://CRAN.R-project.org/package=vegan>, 2018.
- 585 Parks, D. H., Tyson, G. W., Hugenholtz, P. and Beiko, R. G.: STAMP: statistical analysis of taxonomic and functional profiles, *Bioinformatics*, 30(21), 3123–3124, doi:10.1093/bioinformatics/btu494, 2014.

- Pioli, S., Sarneel, J., Thomas, H. J. D., Domene, X., Andrés, P., Hefting, M., Reitz, T., Laudon, H., Sandén, T., Piscová, V., Aurela, M. and Brusetti, L.: Linking plant litter microbial diversity to microhabitat conditions environmental gradients and litter mass loss: Insights from a European study using standard litter bags, *Soil Biology and Biochemistry*, 590 144, 107778, doi:10.1016/j.soilbio.2020.107778, 2020.
- Pioli, S., Sarneel, J., Thomas, H. J. D., Domene, X., Andrés, P., Hefting, M., Reitz, T., Laudon, H., Sandén, T., Piscová, V., Aurela, M. and Brusetti, L.: Linking plant litter microbial diversity to microhabitat conditions, environmental gradients and litter mass loss: Insights from a European study using standard litter bags, *Soil Biology and Biochemistry*, 144 [online] Available from: <https://doi.org/10.1016/j.soilbio.2020.107778>, 2020.
- 595 Prescott, C. E.: Litter decomposition: what controls it and how can we alter it to sequester more carbon in forest soils?, *Biogeochemistry*, 101(1-3), 133–149, doi:10.1007/s10533-010-9439-0, 2010.
- Purahong, W., Wubet, T., Lentendu, G., Schloter, M., Pecyna, M. J., Kapturska, D., Hofrichter, M., Krüger, D. and Buscot, F.: Life in leaf litter: novel insights into community dynamics of bacteria and fungi during litter decomposition, *Molecular Ecology*, 25(16), 4059–4074, doi:10.1111/mec.13739, 2016.
- 600 Quast, C., Pruesse, E., Yilmaz, P., Gerken, J., Schweer, T., Yarza, P., Peplies, J. and Glöckner, F. O.: The SILVA ribosomal RNA gene database project: improved data processing and web-based tools, *Nucleic Acids Research*, 41(D1), D590–D596, doi:10.1093/nar/gks1219, 2012.
- Sandén, T., Spiegel, H., Wenng, H., Schwarz, M. and Sarneel, J. M.: Learning Science during Teatime: Using a Citizen Science Approach to Collect Data on Litter Decomposition in Sweden and Austria, *Sustainability*, 12(18), 7745, 605 doi:10.3390/su12187745, 2020.
- Sandén, T., Wawra, A., Berthold, H., Miloczki, J., Schweinzer, A., Gschmeidler, B., Spiegel, H., Debeljak, M. and Trajanov, A.: TeaTime4Schools: Using Data Mining Techniques to Model Litter Decomposition in Austrian Urban School Soils, *Frontiers in Ecology and Evolution*, 9, doi:10.3389/fevo.2021.703794, 2021.
- | [Sarneel, J. M., Sundqvist, M. K., Molau, U., Björkman, M. P., and Alatalo, J. M.: Decomposition rate and stabilization](https://doi.org/10.1016/j.scitotenv.2020.138304)
610 [across six tundra vegetation types exposed to >20 years of warming, *Science of The Total Environment*, 724, 138304, <https://doi.org/10.1016/j.scitotenv.2020.138304>, 2020.](https://doi.org/10.1016/j.scitotenv.2020.138304)
- | [Schmidt, M. W. I., Torn, M. S., Abiven, S., Dittmar, T., Guggenberger, G., Janssens, I. A., Kleber, M., Kogel-Knabner, I., Lehmann, J., Manning, D. A. C., Nannipieri, P., Rasse, D. P., Weiner, S., and Trumbore, S. E.: Persistence of soil](https://doi.org/10.1016/j.nature.2011.04.011)
organic matter as an ecosystem property, *Nature*, 478, 49-56, 2011.
- 615 Talbot, J. M. and Treseder, K. K.: Dishing the dirt on carbon cycling, *Nature Climate Change*, 1(3), 144–146, doi:10.1038/nclimate1125, 2011.
- Talbot, J. M. and Treseder, K. K.: Interactions among lignin cellulose, and nitrogen drive litter chemistrydecay relationships, *Ecology*, 93(2), 345–354, doi:10.1890/11-0843.1, 2012.
- Talia, P., Sede, S. M., Campos, E., Rorig, M., Principi, D., Tosto, D., Hopp, H. E., Grasso, D. and Cataldi, A.: 620 Biodiversity characterization of cellulolytic bacteria present on native Chaco soil by comparison of ribosomal RNA genes, *Research in Microbiology*, 163(3), 221–232, doi:10.1016/j.resmic.2011.12.001, 2012.
- Thomasgbif: Who Eats the Tough Stuff DNA Stable Isotope Probing (SIP) of Bacteria and Fungi Degrading 13C-Labelled Lignin and Cellulose in Forest Soils, , doi:10.15468/CEWP3N, 2020.
- | [Tatzber, M., Schlatter, N., Baumgarten, A., Dersch, G., Körner, R., Lehtinen, T., . . . Spiegel, H. \(2015\). KMnO4](https://doi.org/10.1016/j.soilres.2015.04.001)
625 [determination of active carbon for laboratory routines: three long-term field experiments in Austria. *Soil Research*, 53\(2\), 190-204. doi:https://doi.org/10.1071/SR14200](https://doi.org/10.1016/j.soilres.2015.04.001)
- Thompson, L. R., Sanders, J. G., McDonald, D., Amir, A., Ladau, J., Locey, K. J., Prill, R. J., Tripathi, A., Gibbons, S. M., Ackermann, G., Navas-Molina, J. A., Janssen, S., Kopylova, E., Vázquez-Baeza, Y., González, A., Morton, J. T.,

- Mirarab, S., Zech, X. Z., Jiang, L., Haroon, M. F., Kanbar, J., Zhu, Q., Jin, S. S., Kosciulek, T., Bokulich, N. A., Lefler, J., Brislawn, C. J., Humphrey, G., Owens, S. M., Hampton-Marcell, J., Berg-Lyons, D., McKenzie, V., Fierer, N., Fuhrman, J. A., Clauset, A., Stevens, R. L., Shade, A., Pollard, K. S., Goodwin, K. D., Jansson, J. K., Gilbert, J. A. and Knight, R.: A communal catalogue reveals Earth's multiscale microbial diversity., *Nature*, 551, 457–463, 2017.
- Walters, W., Hyde, E. R., Berg-Lyons, D., Ackermann, G., Humphrey, G., Parada, A., Gilbert, J. A., Jansson, J. K., Caporaso, J. G., Fuhrman, J. A., Apprill, A. and Knight, R.: Improved Bacterial 16S rRNA Gene (V4 and V4-5) and Fungal Internal Transcribed Spacer Marker Gene Primers for Microbial Community Surveys, edited by H. Bik, *mSystems*, 1(1), doi:10.1128/msystems.00009-15, 2015.
- Wang, Y., Liu, Q., Yan, L., Gao, Y., Wang, Y. and Wang, W.: A novel lignin degradation bacterial consortium for efficient pulping, *Bioresource Technology*, 139, 113–119, doi:10.1016/j.biortech.2013.04.033, 2013.
- Wei, H., Ma, R., Zhang, J., Saleem, M., Liu, Z., Shan, X., Yang, J. and Xiang, H.: Crop-litter type determines the structure and function of litter-decomposing microbial communities under acid rain conditions, *Science of The Total Environment*, 713, 136600, doi:10.1016/j.scitotenv.2020.136600, 2020.
- Wickham, H.: *ggplot2: Elegant Graphics for Data Analysis*, 2nd Printing., Springer., 2009.
- Wieder, W. R., Grandy, A. S., Kallenbach, C. M. and Bonan, G. B.: Integrating microbial physiology and physiochemical principles in soils with the Microbial-MIneral Carbon Stabilization (MIMICS) model, *Biogeosciences*, 11(14), 3899–3917, doi:10.5194/bg-11-3899-2014, 2014.
- Wilhelm, R. C., Singh, R., Eltis, L. D. and Mohn, W. W.: Bacterial and fungal contributions to delignification and lignocellulose degradation in forest soils with metagenomic and quantitative stable isotope probing, , doi:10.1101/387308, 2018.
- Wilpiseski, R. L., Aufrecht, J. A., Retterer, S. T., Sullivan, M. B., Graham, D. E., Pierce, E. M., Zablocki, O. D., Palumbo, A. V. and Elias, D. A.: Soil Aggregate Microbial Communities: Towards Understanding Microbiome Interactions at Biologically Relevant Scales, edited by V. Müller, *Applied and Environmental Microbiology*, 85(14), doi:10.1128/aem.00324-19, 2019.
- [WRB, I. W. G. \(2014\). World Reference Base for Soil Resources 2014. International soil classification system for naming soils and creating legends for soil maps. World Soil Resources Reports No. 106.](#)
- Yan, J., Wang, L., Hu, Y., Tsang, Y. F., Zhang, Y., Wu, J., Fu, X. and Sun, Y.: Plant litter composition selects different soil microbial structures and in turn drives different litter decomposition pattern and soil carbon sequestration capability, *Geoderma*, 319, 194–203, doi:10.1016/j.geoderma.2018.01.009, 2018.
- Yuste, J. C., Peñuelas, J., Estiarte, M., Garcia-Mas, J., Mattana, S., Ogaya, R., Pujol, M. and Sardans, J.: Drought-resistant fungi control soil organic matter decomposition and its response to temperature, *Global Change Biology*, 17(3), 1475–1486, doi:10.1111/j.1365-2486.2010.02300.x, 2010.
- Zheng, H., Yang, T., Bao, Y., He, P., Yang, K., Mei, X., Wei, Z., Xu, Y., Shen, Q. and Banerjee, S.: Network analysis and subsequent culturing reveal keystone taxa involved in microbial litter decomposition dynamics, *Soil Biology and Biochemistry*, 157, 108230, doi:10.1016/j.soilbio.2021.108230, 2021.
- Boer, W. de and Wal, A. van der: Chapter 8 Interactions between saprotrophic basidiomycetes and bacteria, in *British Mycological Society Symposia Series*, pp. 143–153, Elsevier., 2008.
- Boer, W. de, Folman, L. B., Summerbell, R. C. and Boddy, L.: Living in a fungal world: impact of fungi on soil bacterial niche development, *FEMS Microbiology Reviews*, 29(4), 795–811, doi:10.1016/j.femsre.2004.11.005, 2005.
- Plessis, L. du, Rose, S. H. and Zyl, W. H. van: Exploring improved endoglucanase expression in *Saccharomyces cerevisiae* strains, *Applied Microbiology and Biotechnology*, 86(5), 1503–1511, doi:10.1007/s00253-009-2403-z, 2009.

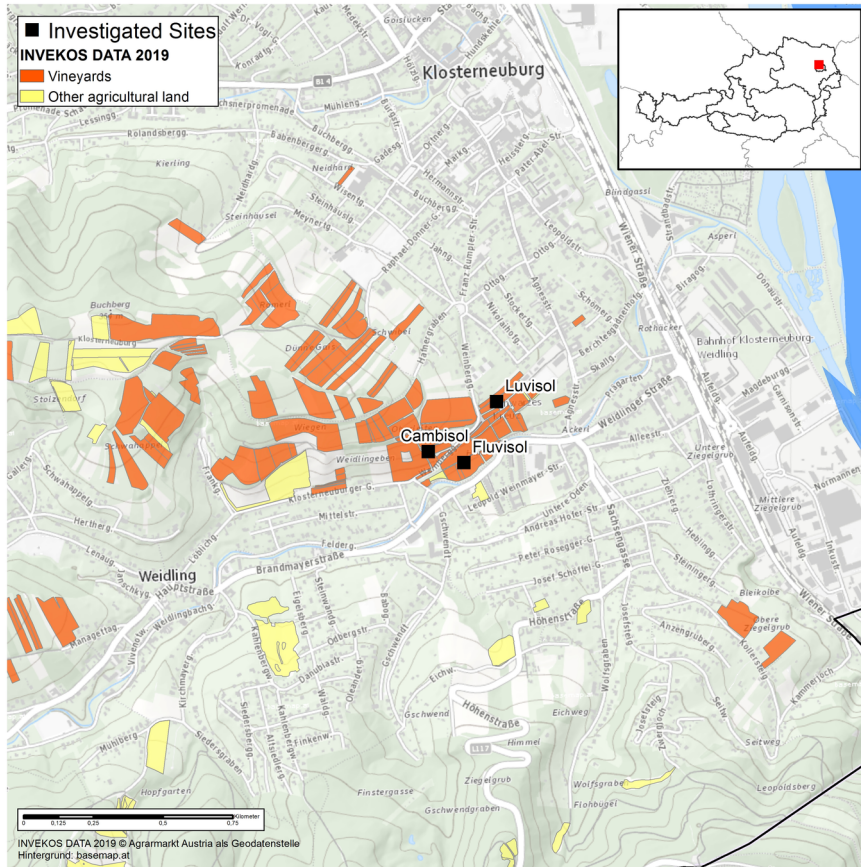
670 R Core Team: R: A Language and Environment for Statistical Computing, [online] Available from: <http://www.R-project.org/> (Accessed 28 June 2012), 2020.

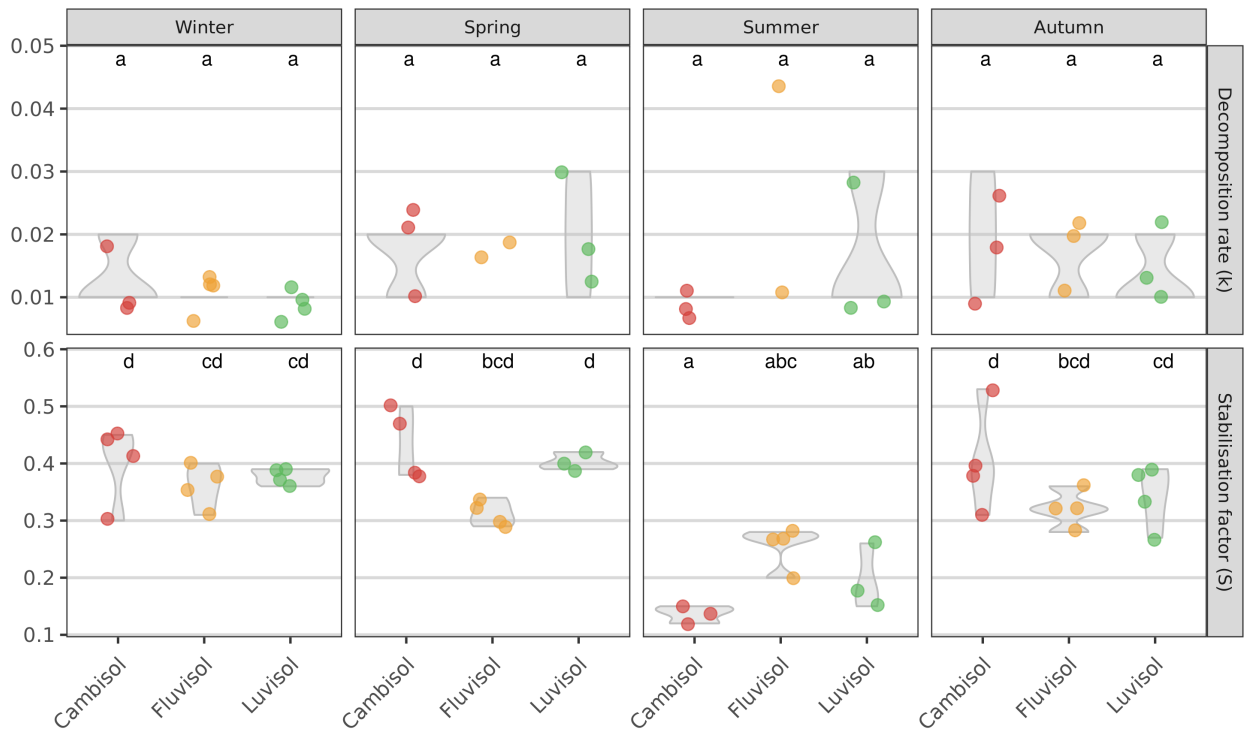
Tables and Figures

Table 1: Soil characteristics at the three study plots over one year.

Plot	Season	pH	P (mg kg soil ⁻¹)	K (mg kg soil ⁻¹)	TOC (%)	N _{tot} (%)	Labile C (mg kg dry soil ⁻¹)	Pot. mineralis. N (mg kg soil ⁻¹ days ⁻¹)	Sand (%)	Silt (%)	Clay (%)
Fluvisol	Winter	7.17 ^{at}	155 ^a	474 ^a	1.92 ^a	0.2 ^a	650 ^a	54.21 ^a	NA	NA	NA
Fluvisol	Spring	7.22	141	578	2.34	0.23	744	126.02	NA	NA	NA
Fluvisol	Summer	7.15	145	570.33	2.56	0.24	745.67	86.26	34.47	38.87	27.53
Fluvisol	Autumn	7.37	155.67	518.33	2.24	0.21	774.67	58.92	NA	NA	NA
Cambisol	Winter	7.07 ^{ab}	203 ^a	696 ^b	2.67 ^b	0.24 ^b	776 ^b	164.95 ^a	NA	NA	NA
Cambisol	Spring	7.17	191	624	2.52	0.25	774	185.23	NA	NA	NA
Cambisol	Summer	7.14	195	619	2.43	0.23	715	118.04	46.53	33.13	20.2
Cambisol	Autumn	7.24	188.33	561.33	2.19	0.21	706	78.71	NA	NA	NA
Luvisol	Winter	7.27 ^b	143 ^b	323 ^c	1.71 ^b	0.17 ^b	582 ^b	104.08 ^a	NA	NA	NA
Luvisol	Spring	7.39	108	282	1.65	0.16	550	107.36	NA	NA	NA
Luvisol	Summer	7.33	137	279.67	1.58	0.15	536.33	78.75	21.17	59.83	19.7
Luvisol	Autumn	7.44	136.33	329.33	1.81	0.17	613.33	92.94	NA	NA	NA

675 [†]Lowercase letters indicate significant differences between plots (adjusted $p \leq 0.05$)





680 | **Figure 2: Decomposition rate (k) and stabilisation factor (S) determined at three sites with different soil types during four seasons. Values shown are averages ($n=4$, lower in case a teabag broke during incubation or in case the rooibos was not in the first phase of decomposition anymore and the main assumptions for calculation of k were violated, thus, k could not be calculated) and the interquartile range (Violin shapes). Lowercase letters indicate significant differences between samples (seasons and sites together; $p_{adj.} \leq 0.05$).**

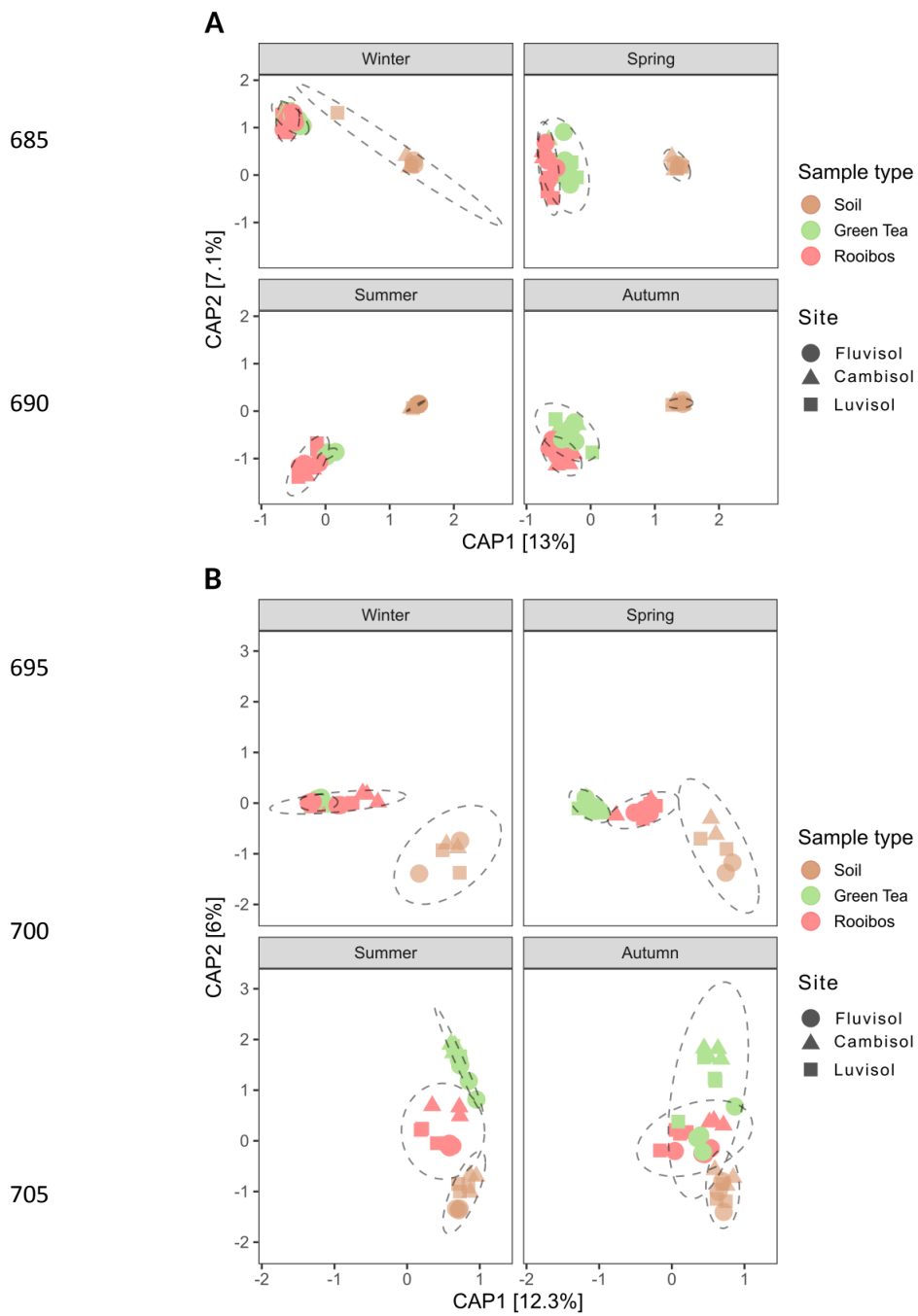


Figure 3: Principal coordinate analyses plots of prokaryotic (A) and fungal (B) community compositions based on Morisita-Horn distances of 16S rRNA gene and ITS region ASVs derived from soil, green tea and rooibos teabags. The models were obtained using the formula: Distance matrix ~ Field + Sample type × Season.

Prokaryotic 16S rRNA gene based ASVs

Fungal ITS regionbased ASVs

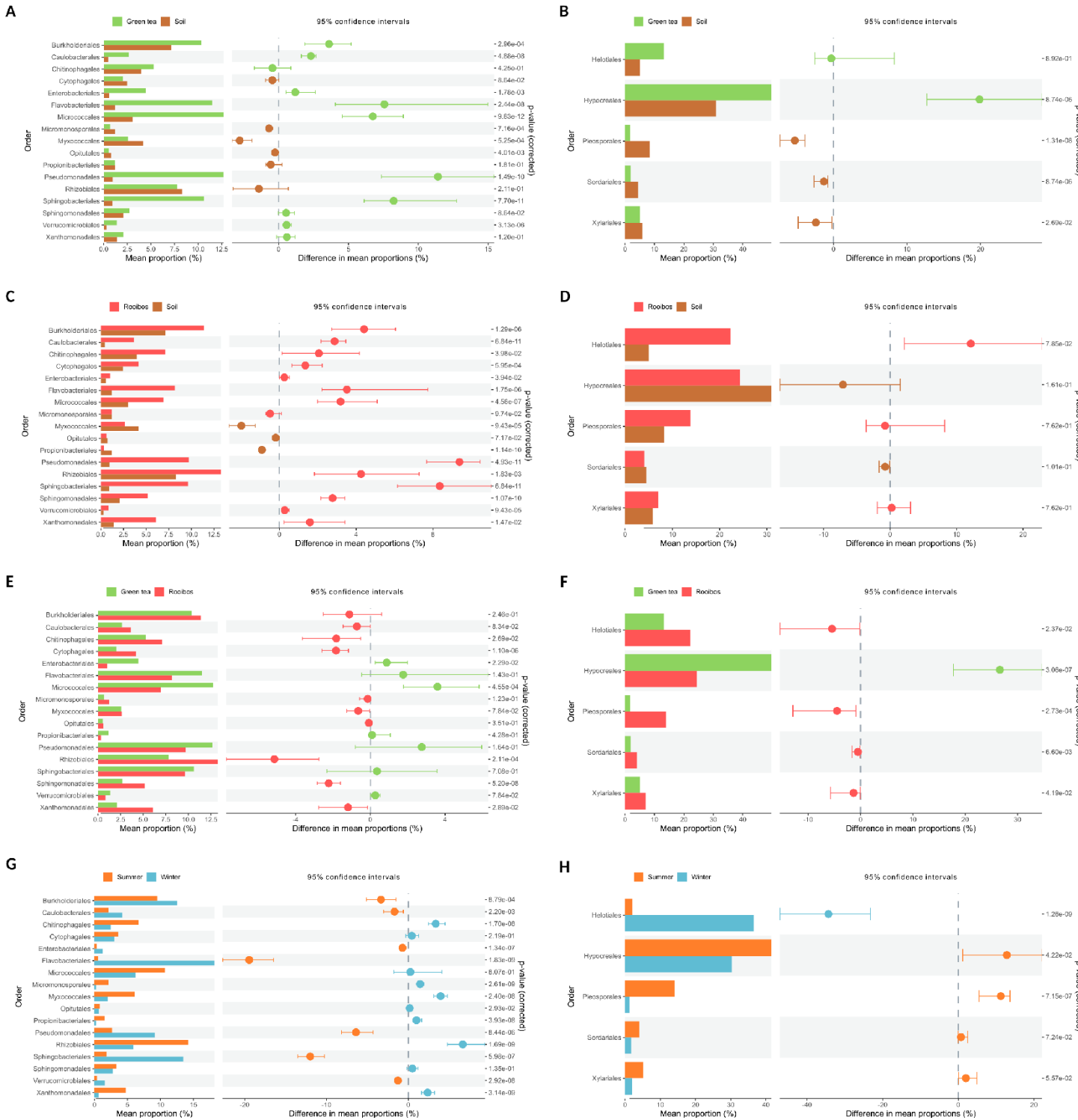


Figure 34: Comparative analysis of the relative abundance based on bacterial and fungal order profiles between **sample types** or **litter types** and seasons. Samples were compared using Kruskal–Wallis rank-sum test, followed by the Mann–Whitney post-hoc test, and FDR corrected using the Benjamini–Hochberg method. Only orders with a median relative abundance of >5% are shown.