

Middle Bronze Age land use practices in the north-western Alpine foreland – A multi-proxy study of colluvial deposits, archaeological features and peat bogs

Sascha Scherer^{1,2,*}, Benjamin Höpfer^{2,3}, Katleen Deckers⁴, Elske Fischer⁵, Markus Fuchs⁶, Ellen Kandler⁷, Jutta Lechterbeck⁸, Eva Lehndorff⁹, Johanna Lomax⁶, Sven Marhan⁷, Elena Marinova⁵, Julia Meister¹⁰, Christian Poll⁷, Humay Rahimova⁸, Manfred Rösch¹¹, Kristen Wroth⁴, Julia Zastrow¹², Thomas Knopf^{2,3}, Thomas Scholten^{1,2}, Peter Kühn^{1,2}

¹Department of Geosciences, Chair of Soil Science and Geomorphology, Eberhard Karls University Tübingen, Rümelinstraße 19-23, 72070 Tübingen, Germany.

10 ²SFB 1070 RESSOURCENKULTUREN, Eberhard Karls University Tübingen, Gartenstraße 29, 72074 Tübingen, Germany.

³Institute of Pre- and Protohistory and Medieval Archaeology, Eberhard Karls University Tübingen, Burgsteige 11, Schloss Hohentübingen, 72070 Tübingen, Germany.

⁴Institute for Archaeological Sciences, Eberhard Karls University Tübingen, Rümelinstraße 23, 72070 Tübingen, Germany.

15 ⁵Laboratory for Archaeobotany, Baden-Württemberg State Office for Cultural Heritage, Fischersteig 9, 78343 Gaienhofen-Hemmenhofen, Germany.

⁶Department of Geography, Justus-Liebig-University Gießen, Senckenbergstraße 1, 35390 Gießen, Germany.

⁷Institute of Soil Science and Land Evaluation, Department of Soil Biology, University of Hohenheim, Emil-Wolff-Straße 27, 70593 Stuttgart, Germany.

⁸Museum of Archaeology, University of Stavanger, Peder Klows gate 30A, 4036 Stavanger, Norway.

20 ⁹Department of Earth Sciences, Chair of Soil Ecology, University of Bayreuth, Dr.-Hans-Frisch-Straße 1-3, 95448 Bayreuth, Germany.

¹⁰Department of Geography and Geology, Chair of Physical Geography, Julius-Maximilians-University Würzburg, Am Hubland, 97074 Würzburg, Germany.

25 ¹¹Institut für Ur- und Frühgeschichte und vorderasiatische Archäologie, Ruprecht-Karls-Universität Heidelberg, Sandgasse 7, 69117 Heidelberg, Germany.

¹²Institute for Archaeological Sciences, AG Archaeozoology, Eberhard Karls University Tübingen, Rümelinstraße 23, 72070 Tübingen, Germany.

*Correspondence to: Sascha Scherer (sascha.scherer@uni-tuebingen.de)

30 benjamin.hoepfer@uni-tuebingen.de; katleen.deckers@uni-tuebingen.de; elske.fischer@t-online.de;
markus.fuchs@geogr.uni-giessen.de; ellen.kandler@uni-hohenheim.de; eva.lehndorff@uni-bayreuth.de;
johanna.lomax@geogr.uni-giessen.de; sven.marhan@uni-hohenheim.de; elena.marinova-woff@rps.bwl.de;
julia.meister@uni-wuerzburg.de; christian.poll@uni-hohenheim.de; humay.rahimova@uni-bayreuth.de;
manfred-roesch@t-online.de; knwroth@bu.edu; zastrowjulia@yahoo.com; thomas.knopf@uni-tuebingen.de;
thomas.scholten@uni-tuebingen.de; peter.kuehn@uni-tuebingen.de;

35 Abstract

This paper aims to reconstruct Middle Bronze Age (MBA, 1600 – 1250 BCE) land use practices in the north-western Alpine foreland (SW Germany, Hegau). We used a multi-proxy approach including the analysis of biogeochemical proxies from colluvial deposits and buried topsoils in the surrounding of the well-documented settlement site of Anselfingen and offsite pollen data from two peat bogs. This approach allowed in-depth insights into the MBA subsistence economy and shows that

40 the MBA in the north-western Alpine foreland was a period of establishing settlements with sophisticated land management and land use practices. The reconstruction of phases of colluvial deposition was based on ages from optically stimulated luminescence (OSL) and radiocarbon (AMS ^{14}C) dating from multi-layered colluvial deposits and supports the local archaeological record with the first phase of major colluvial deposition occurring during the MBA followed by phases of colluvial deposition during the Iron Age, the Medieval period, and modern times. The onsite deposition of charred
45 archaeobotanical remains and animal bones from archaeological features, as well as polycyclic aromatic hydrocarbons (PAHs), charcoal spectra, phytoliths, soil microstructure, urease enzymatic activity, microbial biomass carbon (C_{mic}) and heavy metal contents from colluvial deposits, were used as proxies for onsite and near-site land use practices. The charcoal spectra indicate MBA forest management which favoured the dominance of *Quercus* in the woodland vegetation in the surrounding area north of the settlement site. Increased levels of 5β stanols (up to 40 %) and the occurrence of pig bones (up to 14 %) support the
50 presence of a forest pasture mainly used for pig farming. In the surrounding area south of the settlement, an arable field with a buried MBA plough horizon (2Apb) could be verified by soil micromorphological investigations and high concentrations of grass phytoliths from leaves and stems. Agricultural practices (e.g. ploughing) focussed on five stable cereal crops (*Hordeum distichon/vulgare*, *Triticum dicoccum*, *Triticum monococcum*, *Triticum spelta*, *Triticum aestivum/turgidum*), while the presence of stilted pantries as storage facilities and of heat stones indicate post-harvest processing of cereal crops and other
55 agrarian products within the settlement. In the area surrounding the settlement, increased levels of urease activity, compared to microbial biomass carbon (up to $2.1 \mu\text{g N } \mu\text{g } C_{\text{mic}}^{-1}$), and input of herbivorous and omnivorous animal faeces indicate livestock husbandry on fallow land. The PAH suites and their spatial distribution support the use of fire for various purposes, e.g. for opening and maintaining the landscape, for domestic burning and for technical applications. The offsite palynological data support the observed change in onsite and near-site vegetation as well as the occurrence of related land use practices.
60 During the Early and Middle Bronze Age fire played a major role in shaping the landscape (peak of micro-charcoal during the MBA) and anthropogenic activities promoted *Quercus* dominated forest ecosystems at the expense of natural beech forests. This indicates a broader regional human influence in the north-western Alpine foreland at low and mid altitude inland sites during the Middle Bronze Age.

1 Introduction

65 Human use of land has profoundly altered terrestrial ecosystems since the Late Pleistocene and Early Holocene (Ellis et al., 2011; Redman, 1999). The emergence of sedentism and agricultural practices has intensified this trend, at least since population sizes and technological capabilities increased (Ellis et al., 2013). In the north-western Alpine foreland, most Middle Bronze Age (MBA, 1600 – 1250 BCE) settlements are known from sites with aerobic soil conditions further inland, while the lakeshores and bogs were widely depopulated during this period (Menotti, 2001; Köninger, 2015). However, weathering
70 processes and aerobic soil conditions limit the preservation of archaeological finds, organic remains and biogeochemical proxies (Jansen and Wiesenbergh, 2017). Therefore, rather few onsite and near-site (distance < 5 km to the site)

archaeopedological and archaeobotanical evidence is available so far for MBA settlements in the north-western Alpine foreland. Additionally, the information from offsite (distance > 5 km to the site) proxies is more closely related to the vicinity of lakes and bogs than to settlements further inland (Rösch, 2013; Tinner et al., 2003).

75 One approach to overcome these drawbacks is the analysis of colluvial deposits and buried topsoils as archives for the reconstruction of past land use practices, close to documented settlement sites (Kittel, 2015, Ponomarenko et al., 2020). With respect to the diverse definitions of colluvial deposits as hillslope sediments transported by either mass-gravity transport or
80 slopewash type processes (Miller and Juilleret, 2020), we refer to the German term ‘Kolluvium’, which defines colluvial deposits as the correlate sediments of human-induced soil erosion (e.g. Kadereit et al., 2010). In Central Europe, human impact on the terrestrial ecosystem has distinctly increased since the Late Holocene (Winiwarter and Bork, 2019) and land use
85 practices such as deforestation and soil tillage have left land use traces (e.g. charcoal, archaeobotanical and biogeochemical proxies) that are archived in colluvial deposits by impeding degradation processes through continuous sedimentation (Kühn et al., 2017). Therefore, colluvial deposits can be considered one of the key archives for human-land interactions (Pietsch and Kühn, 2017; Zádorová, and Penížek, 2018) as they store not only the history of climate and sedimentation, but also proxies for
90 past land use change and associated practices (Dreibrodt et al., 2010a;b; Scherer et al., 2021). These land use proxies can be spatially and temporally related to nearby settlement sites, which allows for a more detailed understanding of local phases of land use. For example, the determination of charcoal assemblages from different colluvial horizons can help to identify changes in woody vegetation that could be the result of anthropogenic efforts to promote a certain type of landscape (Dreibrodt et al., 2009; Schroedter et al., 2013). The vegetation changes could be accompanied by the use of fire, which is reflected in the
95 accumulation of polycyclic aromatic hydrocarbons (PAHs) (Tan et al., 2020). An increased occurrence of open landscapes, as indicated by a higher abundance of grass phytoliths and the determination of charred archaeobotanical remains, provides information on past arable farming and on the nutritional basis of past societies (Ball et al., 1999; Rösch, 2013; Weißkopf et al., 2014). The application of manure and/or the keeping of livestock can be considered an integral part of prehistoric land use practices (Bogaard, 2004). The analysis of extracellular urease and faecal biomarker in colluvial horizons helps to identify
these land use practices (Borisov and Peters, 2017; Lauer et al., 2014). The distinction between the geogenic background and the additional atmospheric or direct input by anthropogenic contamination in colluvial horizons can be investigated by heavy metal analyses of all horizons, including part of the buried soil profiles, which have no or minor anthropogenic influences (Dreibrodt et al., 2009; Henkner et al., 2018b).

Within the north-western Alpine foreland, the Hegau (SW Germany) is a suitable study area for the investigation of MBA land
100 use due to the widely distributed occurrence of colluvial deposits and the density of known archaeological sites (Dieckmann, 1998; Höpfer, 2014). Studies on colluvial deposits in the Hegau have shown that local land use activities can be dated back to the Neolithic and still occur in the modern period (Höpfer et al., 2016; Schulte and Stumböck, 2000; Vogt, 2014). Regarding the Bronze Age, Vogt (2014) has documented a regional deposition phase close to Lake Constance, that occurred mainly in the Early Bronze Age (EBA, 2200 – 1600 BCE). Further inland, Schulte and Stumböck (2000) found only Late Bronze Age
105 (LBA, 1050 – 800 BCE) to Early Iron Age (EIA, 800 – 450 BCE) colluvial deposits. However, archaeological remains from

the inner Hegau reflect phases of human occupation during the MBA, but corresponding phases of colluvial deposition are far less frequent. Hence, biogeochemical proxies of MBA colluvial deposits for the reconstruction of related land use practices have not been analysed in this region so far.

To address the question of which land use practices were typical for the MBA in the north-western Alpine foreland, we applied a multi-proxy approach to colluvial deposits, buried topsoils and archaeological features at the well-documented settlement site of Anselfingen, ca. 20 km west of Lake Constance. Colluvial deposits, buried topsoils and archaeological features were associated by deciphering the local stratigraphy. Numerical dating, such as the optically stimulated luminescence (OSL) dating of single colluvial horizons and the AMS radiocarbon (^{14}C) measurements of charcoal fragments, were applied to establish a temporal framework that could be related to local archaeological records. The analysis of the soil micromorphology, phytoliths, charred archaeobotanical remains, urease activity, faecal biomarker, animal bones, PAHs, charcoal assemblages, and heavy metals were used to reconstruct past land use practices. The sum of all proxies, which were applied within the settlement (onsite) and at the presumable land use areas (near-site), is used for a better understanding of land use practices related to the human occupation at the Anselfingen site. The investigation of two offsite pollen profiles in this study allowed for a comparison between the local information of land use and vegetation change with vegetation and land use pattern visible on a regional scale.

Our study focuses on the:

- (i) archaeopedological reconstruction of phases of colluvial depositions and onsite and near-site land use practices (e.g. crop cultivation, livestock husbandry, and manuring as well as the use of fire, wood and metal) at the settlement site of Anselfingen through combining the biogeochemical analyses of colluvial deposits and buried topsoils with the analysis of archaeological features,
- (ii) identification of spatial patterns of on- and near-site land use practices within the Anselfingen settlement and its surrounding area,
- (iii) characterization of differences and similarities between the onsite and near-site vegetation patterns resulting from land use practices in Anselfingen and the offsite vegetation signals derived from two pollen profiles.

2 Material and methods

2.1 Physical geographical setting

The study area is in the north-west of the Hegau (SW Germany), which is part of the north-western Alpine foreland (Fig. 1). In the north, the study area borders the southern decline of the Swabian Jura, from where the tertiary sediments of the Younger Juranagelflugh were transported into the Hegau. The Hegau is characterized by filled volcanic vents (with phonolite, basalt, and porphyry) as remains of the tertiary volcanism and is mainly covered by tertiary porphyry (Deckentuff), Würmian glacial and glacio-fluvial deposits such as (terminal) moraines and gravel (Schreiner, 2008; Geyer et al., 2011).

Soil substrates in and around the excavation near Anselfingen (ABR) are redeposited sediments and weathered bedrock from the Younger Juranagelfluch and the Würmian glaciofluvial deposits (mainly gravel, sand and silt). Volcanic material comes from the Hohenhewen (mainly basalt) in the west of the excavation area. The ABR site lies on glaciofluvial deposits next to the outer young terminal moraine of the Würmian (Äußere Jungendmoräne). Cambisols, Luvisols, Phaeozems and Calcaric Regosols, which developed on different substrates and with different stagnic and vertic features, dominate the Reference Soil Groups according to WRB (IUSS Working Group WRB, 2015). The climate is moderately warm with annual average air temperatures between 7.5 and 8.5 °C, whereas the hilltops are between 6 and 7 °C. The annual precipitation is between 700 and 825 mm. The potentially natural vegetation is dominated by Central European thermophilous calciphilous beech forests (*Fagus sylvatica*) with white wood-rush (*Luzula luzuloides*) and by Central European sessile oak (*Quercus petraea*)-beech forests; both are characterized by a rich and diverse shrub and herb layer (Bohn et al, 2003). The modern vegetation is strongly shaped by agricultural and forestry activities.

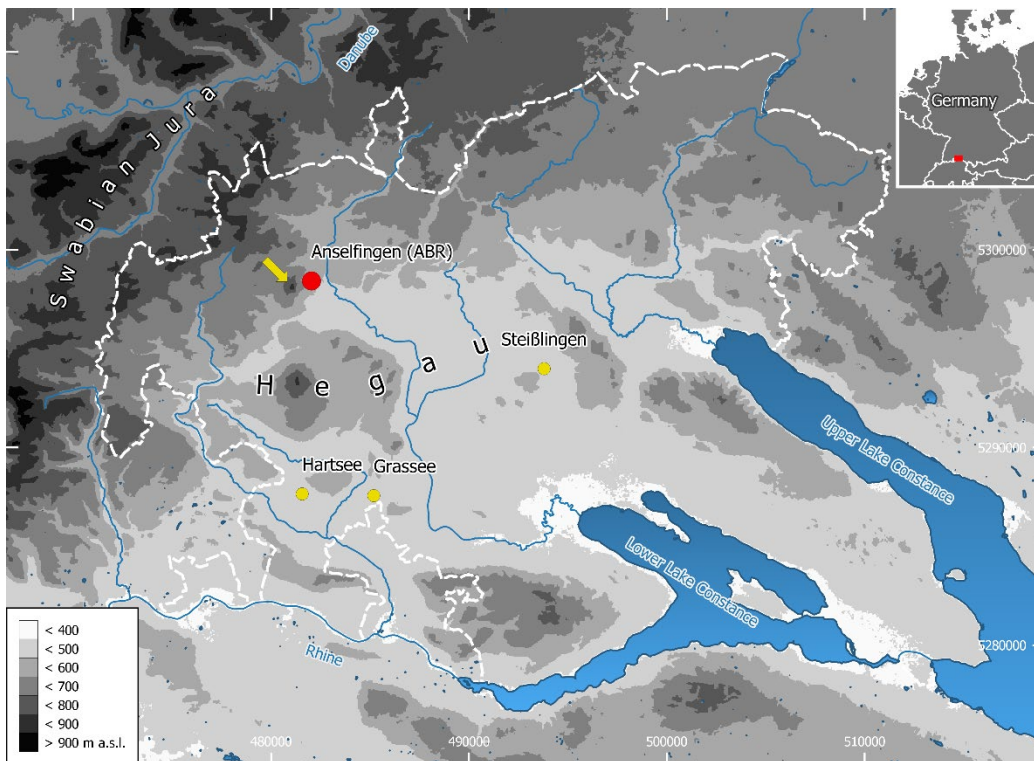


Figure 1: Study area (Hegau, SW Germany) with the Middle Bronze Age settlement site of Anselfingen (ABR, red dot), the pollen profiles (yellow dots) and Hohenhewen (yellow arrow). Coordinates are shown in UTM 32N reference system; EPSG 25832. Image credits: NASA SRTM-1 V.3 (NASA JPL, NASA Shuttle Radar Topography Mission Combined Image Data Set. NASA EOSDIS Land Processes DAAC (2014), <http://doi.org/10.5067/MEaSURES/SRTM/SRTMIMGM.003>, (digital terrain model); © Landesanstalt für Umwelt Baden-Württemberg (2020), <https://udo.lubw.baden-wuerttemberg.de> (official water management network).

2.2 Archaeological setting

155 The Hegau is rich in archaeological sites and is particularly important for the Bronze Age research in the north-western Alpine foreland (Hald and Kramer, 2011). Among the most prominent sites are the large Early Bronze Age (EBA) cemetery of Singen (Krause et al., 1988) and several well-preserved lakeside settlements such as Bodman ‘Schachen’ (Köninger, 2006). However, EBA sites are comparatively scarce further inland, whereas, during the Middle Bronze Age (MBA), there was an increase in settlement activity concentrated mainly on the areas further inland, while the lakeshore sites were almost completely excluded
160 (Höpfer, 2014; Menotti, 2003). From the Late Bronze Age (LBA) numerous burial sites are known, such as the necropolis in Singen (Brestrich, 1988). Additionally, numerous LBA settlements have been documented in the inland, on the lakesides and on the hilltops (Schöbel, 1996; Hopert et al., 1998).

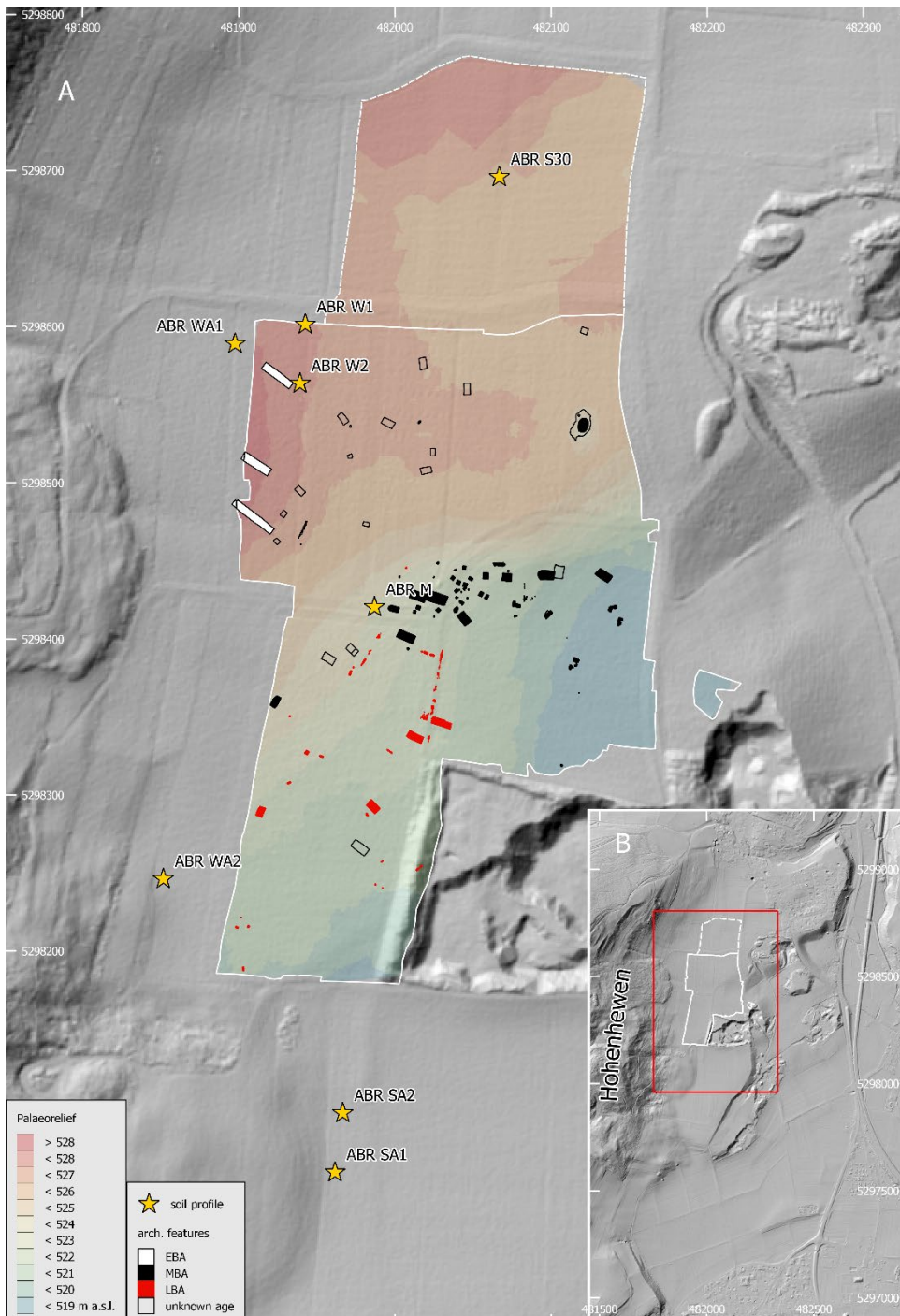
The Anselfingen (Anselfingen-Breite, ABR) settlement (Fig. 2) lies further inland of the Hegau and had occupation phases in the Younger and Final Neolithic, the EBA, MBA and LBA, the Hallstatt and Latène period of the Celtic Iron Age, and the
165 Roman period (Ehrle et al., 2018). The adjacent area was densely settled during the MBA, with up to three additional villages, Mühlhausen-Ehingen (Dieckmann, 1998; Hald, 2015), Engen-Welschingen (Hald et al., 2015) and Hilzingen-Binningen (Wissert, 1985), within a distance of 5 km. Since the beginning of the 20th century, the gravel pit has been active and many archaeological finds have been reported. Until recently, these finds mainly included the remains of a Celtic settlement (Kellner-Depner, 2016). Along with a scattering of Final Neolithic finds, there were also stray finds, which indicated the existence of
170 an MBA burial site (Kraft, 1928; Garscha, 1936). The actual MBA settlement was discovered during rescue excavations, which have been performed by the Cultural Heritage Authorities of Baden-Württemberg and the Archaeological Service of the District of Constance since 2008 and continue with the expansion of the gravel pit. To date, almost nine hectares have been excavated and another four hectares to the north have been explored by trench-prospection.

2.3 Vegetation history

175 Compared to the Lake Constance area, with its lake, peat bogs and wetland depositional environments, the inner Hegau was hardly investigated palynologically until the end of the 20th century (Eusterhues et al., 2002; Hölzer and Hölzer, 1990). Lake Steißlingen remained the most north-western pollen archive investigated so far, which left the interpretation of vegetation history vague further inland. Despite the scarceness of potential archives in the inner Hegau, the profiles of Grasse and Hartsee presented here (Fig. 1) are two recently studied pollen profiles that provided nearly complete Late Würmian and Holocene
180 sequences with sufficient pollen preservation.

Around Lake Steißlingen the vegetation was dominated by mixed birch and pine forests in the early Holocene (Preboreal, 9600-8700 BCE) before the spread of hazel in the Boreal (8700-7200 BCE). During the Atlanticum (7200-3700 BCE) the land was mainly covered by thermophilus deciduous vegetation, with mixed oak forests restricted to drier soil conditions (Lechterbeck, 2001; Rösch, 1987). Before the arrival of the settlers of the Linear Pottery Culture (5500- 5000 BCE), those
185 forests, consisting of *Quercus*, *Alnus*, *Fraxinus*, *Ulmus* and *Corylus*, were probably dense. Evidence for agricultural activity

at Lake Steißlingen cannot be traced back earlier than 4200 BCE (Lechterbeck, 2001) and is in line with the analysed pollen profiles from the shores of Lake Constance (Rösch, 1987). From the EBA to the beginning of the MBA, indicators for open landscapes, such as herbs and sweet grasses, are more abundant in the pollen spectra of Lake Steißlingen and lakes in the area surrounding Lake Constance. A lower density of mixed oak forests, an increase in micro-charcoal (as proxy for paleo-fire) and non-arboreal pollen (as proxy for open vegetation) seem to further underline human influence on the landscape. During the MBA and LBA, natural succession indicates a weakening of anthropogenic disturbance (Lechterbeck, 2001; Rösch, 1987). Thereafter, phases of natural succession alternate with phases of human-land interaction during the early Latène period (ca. 450 BCE), the Roman period (ca. 50 BCE – 260 CE) and since 550 CE (Lechterbeck, 2001).



195 **Figure 2:** (A) Location of the investigated colluvial deposits and the Bronze Age structures (EBA: Early Bronze Age; MBA: Middle Bronze Age; LBA: Late Bronze Age) and their topographic situation in Anselfingen "Breite" (ABR). Coloured area shows the boundary A after Edgeworth et al. (2015), i.e. the paleosurface on which the colluvial deposits accumulated. (B) The excavation area (red frame) and the ascent to the Hohenhewen to the west. Coordinates are shown in UTM 32N reference system; EPSG 25832. LIDAR credits: © LGL Baden-Württemberg, www.lgl-bw.de (2002), resolution 1x1 m.

200 2.4 Field work

Soil samples were collected in 2017 and 2018. Soil description followed the German guidelines for soil description (Ad-hoc-AG Boden, 2005) and were classified according to the World Reference Base for Soil Resources (IUSS Working Group WRB, 2015) by using the translation software of Eberhardt et al. (2014). Soil horizons that appeared blackish-brown, were homogeneous and mostly rich in organic matter and charcoal fragments and were without other characteristics of soil formation, were designated as colluvial horizons (M horizon, *lat. migrare*, to migrate). In the area surrounding the ABR settlement, colluvial deposits are widely distributed due to the slopes of the Hohenhewen and the heterogeneous paleo-relief which remained after glacier retreat. After a soil survey, eight locations were chosen for colluvial profiles. Along the profiles, every colluvial horizon was sampled in a continuous column with 5 cm depth increments. Different samples were collected for the analysis of faecal biomarkers as well as for the investigation of charcoal, microbiological proxies, soil micromorphological features and further pedogenic and soil-biogeochemical proxies. The microbiological samples were cooled during field work and stored at $-18\text{ }^{\circ}\text{C}$.

Two samples for micromorphology were taken in Profile ABR SA2 from 187-197 cm and 190-200 cm, which refers to the buried plough horizon 2Apb. Samples for luminescence dating were taken from newly cleaned profile walls with light-proof steel cylinders that were hammered horizontally into the profiles. Bulk samples for dose-rate determination and water content measurements were taken in plastic bags around the sample holes of the cylinders.

During the rescue excavation, the colluvial deposits were removed mechanically until the *in-situ* soil was exposed (Fig. 3). Subsequently, a main planum was made and documented. Archaeological features observed in colluvial horizons were documented in additional plana. All features were further examined in at least one cross section. Documentation comprised analogue and digital photography, standardized text descriptions and digital mapping via theodolite and/or photogrammetry. Spatial data were processed using ArchaeoCAD (ArcTron GmbH) during the excavation and transferred to Quantum GIS (long term release 3.10.8 “A Coruña”) for analysis. From a series of documented finds, charcoal samples for further AMS- ^{14}C measurements were collected, in addition to those already published (Höpfer et al., accepted).

The two cores for the pollen analysis were taken with a modified Livingstone sampler (Merkt and Streif, 1970) from the almost dry surface of Grassee and from a raft at Hartsee. The Grassee mire is divided into two sections by a forest and two forest tracks. The eastern section is dominated by an alder carr and the western section, from which the core was taken, represents an open fen. The Hartsee mire consists of several small and shallow lakes which are surrounded by wetland. The core was taken from the eastern part. Both profiles were subsampled in close distances; samples for pollen analysis were taken at 2 cm intervals. The Grassee and Hartsee profile had a length of 700 and 635 cm, respectively.

2.5 Laboratory analyses

X-ray granulometry (SediGraph 5120, Micromeritics GmbH, Germany) was used for the determination of grain sizes $< 20\text{ }\mu\text{m}$, while grain sizes between $20\text{ }\mu\text{m}$ and 2 mm were measured by weighing the sieved soil material. Soil pH (CaCl_2) value

was analysed by using a soil:solution ratio of 1:2.5 (Sentix 81, WTW, pH 340). Carbonate content (CaCO_3) was volumetrically determined using a calcimeter (Eijkelkamp, Giesbeek). An element analyzer (“vario EL III”, Elementar Analysensysteme GmbH, Germany, in CNS mode) with helium atmosphere and oxidative heat combustion at 1150 °C was used for the measurement of total carbon (TC) and nitrogen (TN). The difference of total inorganic carbon (TIC) and TC was used for the calculation of the soil organic carbon (SOC) content (Don et al., 2009).

After air-drying, the oriented samples for soil micromorphology were impregnated with Viscovoss N50S resin and MEKP505F hardener. After the resin had cured, the blocks were first formatted into 60 × 90 mm blocks and then cut in half with a saw (Woco Top 250 A1, Uniprec). One half was ground with an encapsulated precision grinding machine (LDQ 6100, Huayid) and mounted on a glass. After three days the mounted samples were cut into about 100 µm thick slices and then ground to 30 µm. Thin sections were described under a polarizing microscope (Zeiss Axio Imager.A2m; Software AxioVision 4.7.2) mainly using the terminology of Stoops (2003).

All samples for OSL dating were analysed using the coarse grain quartz fraction with a grain size range of 90-200 µm. The paleodose (D_e) determination was conducted using a standard SAR protocol following Murray and Wintle (2000; 2003). Radionuclide concentrations were determined either via a combination of thick source alpha-counting (for U and Th) and ICP-OES (for K), or via a combination of alpha- and beta-counting in a µdose system (Tudyka et al., 2020).

Charcoal fragments from the colluvial profiles and archaeological features were dated with AMS- ^{14}C dating at the Klaus-Tschira-Lab at the Curt-Engelhorn-Centre of Archaeometry in Mannheim. The Acid-Base-Acid method was conducted for sample pre-treatment (Steinhof et al., 2017). The ^{14}C ages were normed to $\delta^{13}\text{C} = -25\text{‰}$ (Stuiver and Polach, 1977). The calibration of ^{14}C ages to calendar years was performed with SwissCal 1.0 using the IntCal13 calibration curve (Ramsey, 2009; Reimer et al., 2013).

For the determination of charcoals, 529 fragments from three colluvial profiles (ABR W2: 267, ABR SA1: 120, ABR SA2: 162) were retrieved by flotation. The transversal, tangential and radial sections of charcoal were investigated for diagnostic features, using magnifications between 60x and 500x. Identification literature (Schweingruber, 1990a; b) was consulted as well as the charcoal reference collection of the Archaeobotany Laboratory at University of Tübingen.

The extraction of phytoliths was conducted at the Universities of Würzburg and Tübingen and followed the procedures outlined by Albert et al. (1999) and Katz et al. (2010), respectively. Morphological identification of the phytoliths followed the standard literature (Brown, 1984; Parr and Carter, 2003; Piperno, 2006; Twiss et al., 1969) and modern plant reference collections (Albert, 1999; Meister et al., 2017; Portillo et al., 2014; Tsartsidou et al., 2007). The International Code for Phytolith Nomenclature was followed where possible (Madella et al., 2005). Phytolith morphologies are grouped into three main categories: herbaceous dicotyledonous plants, woody dicotyledonous plants and monocotyledonous plants (Piperno, 2006).

For the archaeobotanical investigation, a total of 20 samples from MBA structures (e.g. firepits with heat stones, fireplaces, deposited vessels, and post-holes from architectural remains) were analyzed. The sediment samples were washed over a multi-part sieve set. The smaller fractions were floated to separate the organic components from the mineral ones. The 0.3 mm fractions of three charcoal-rich samples could only be examined for 10 to 30 %. All other samples and fractions were screened

completely under the binocular and botanical macro remains, excluding charcoal, were taken out. The determination was carried out following the current literature (Jacomet, 1987; Jacomet et al., 1989; Bekker and Cappers, 2006) and the reference collection of the Laboratory for Archaeobotany in Hemmenhofen.

270 For the analysis of polycyclic aromatic hydrocarbons (PAHs), a modified protocol of Bläsing et al. (2016) was followed. A Speed Extractor (E-916, Büchi Labortechnik GmbH, Germany) was used for sample extraction; samples were concentrated using Rotavapor (Büchi, Switzerland). Solid Phase Extraction (SPE) was used for sample purification according to Lehndorff and Schwark (2009). The quantification of PAHs was performed using gas chromatography (GC, Agilent Technologies 7890B, Germany) coupled with mass spectrometry (MS/MS, EVO 3, Chromtech, Germany).

275 The extracellular enzyme urease is responsible for the cleavage of urea to ammonia and CO₂ and its microbial production is stimulated by the presence of eutrophic soil conditions (e.g. faeces of animals) (Kandeler and Gerber 1988). Its specific feature is that urease-organo-mineral complexes are stable for long time periods (Skujins and McLaren, 1968). Extracellular urease activity derived from soil organisms was determined colorimetrically according to Kandeler and Gerber (1988). Synergy HTX multi-mode reader (BioTek) was used for colorimetric measurements at 690 nm.

280 Microbial biomass carbon (C_{mic}) was determined by the substrate-induced respiration method (SIR) (Anderson and Domsch, 1978). Measurements were taken using an automated respirometer system based on electrolytic O₂ microcompensation (Scheu, 1992). A detailed description of sample preparation and data analysis is given in see Scherer et al. (2020). In this study, the urease activity was related to the microbial biomass carbon to differentiate between past and present input of urea, since extracellular urease is considered to be very stable and C_{mic} as proxy for current microbial activity. Increased urease activities to microbial biomass ratios are therefore an indicator for ancient soil eutrophication by animal faeces.

285 Faecal biomarkers (sterols, stanols, stanones) were analysed using a modified protocol according to Prost et al. (2017) and Birk et al. (2012). A Speed Extractor (E-916, Büchi Labortechnik GmbH, Germany) was used for accelerated sample extraction. For the analysis of sterols, stanols and stanones, the total lipid extracts (TLE) were analysed by using gas chromatography (GC, Agilent Technologies 7890B, Germany) coupled with mass spectrometry (MS/MS, EVO 3, Chromtech, Germany). For detailed information about sample preparation, equipment and hardware settings, see Scherer et al. (2020).

290 A reverse *aqua regia* solution (HNO₃ to HCl ratio 1:3, DIN ISO 11466: 1997-06) in a microwave (MLS GmbH, Germany) was used for the dissolutions of the heavy metals (As, Cd, Cr, Cu, Hg, Ni, Pb, Zn). ICP-OES (Optima 5300DV, Perkin Elmer Inc.) equipped with a Miramist nebulizer using the element-specific wavelengths according to Nölte (2002), was used for the measurements of heavy metal contents.

295 The taxonomic and taphonomic analysis of bone material was carried out in the zooarchaeological comparative collection of the University of Tübingen. The faunal age was assessed and classified according to Lyman (1994). The taphonomic analysis comprised natural and anthropogenic impacts on the bones such as burning, animal bites, human cutmarks and traces of natural environmental influences as root etching, changes due to sunlight or weathering. Burned bones were categorized in six categories following Stiner (1995). A detailed description of the methodological approach is given in see Scherer et al. (2020).

The investigation of the pollen profiles was focused on the Bronze Age period (2200 – 800 BCE), and was composed of 17
300 pollen samples at the Grassee and 59 pollen samples from the Hartsee mire. The time resolution was 70 years for the Grassee
and 20 years for the Hartsee mire. The chemical preparation for pollen analyses was carried out using hot HCl, HF, Chloration,
and Acetolysis (Berglund, 1986). The material was stored in Glycerol. For the analysis, permanent unstained Glycerol-slides
were used.

Detailed information on sample preparation, equipment, and data presentation for each method can be found in Scherer et al.
305 (2020).

3 Results

3.1 Stratigraphy and related pedofeatures

Eight multi-layered colluvial profiles were documented with a thickness of at least 200 cm (Tab. 1). The colluvial horizons of
ABR S30, ABR W1, ABR W2, ABR WA1 and ABR M developed mostly from the sediments of the Younger Juranagelfluf
310 and buried fully preserved or truncated (Vertic) Cambisols, which developed in loamy glacio-fluvial sediments with different
proportions of gravels. In profiles ABR W1, ABR W2 and ABR WA1, paleo-land surfaces were characterized by blackish
horizons with a well-developed prismatic and angular blocky structure with slickensides. An excavation boundary of about
150 m stratigraphically connects profiles ABR W1, ABR W2, ABR WA1 and the paleo-surface, which contained the
archaeological finds. The thickness of colluvial deposits along the excavation wall decreased from north to south (Fig. 3). For
315 ABR M and ABR S30, a higher percentage of calcareous gravel was observed. The soil substrate of profiles ABR WA2, ABR
SA1 and ABR SA2 were mostly derived from basaltic material from the Hohenhewen volcano. For profile ABR SA2, a buried
plough horizon (2Apb) with a sharp transition to the underlying subsoil horizon (2CBw) was observed. For all profiles, the
transition between colluvial deposit and paleo-surface (boundary A after Edgeworth et al., 2015), i.e. the prehistoric surface,
was documented.



320

Figure 3: Overview of the western excavation boundary at the ABR site with the colluvial profiles ABR W1, ABR W2, ABR WA1 and related colluvial horizons (M). Photo:Höpfer, 2017. The distance between ABR W1 and ABR W2 is about 38 m.

For all colluvial profiles, a high clay content between 32 and 65 %, with a sharp (ABR W1, ABR W2) to moderate (ABR SA2) increasing trend with depth, was determined. The maximum clay contents (> 60 %) were measured in the buried subsoil horizons (2Bwig) of ABR W1 and ABR W2. The sand fraction decreased with depth (up to 17 % difference) for profiles ABR W1 and ABR W2, whereas for ABR SA2 differences of only 7 % were determined. The silt proportions were the highest at the present topsoil horizons and ranged between 25 and 48 %. The soil pH of all soil profiles showed a neutral soil milieu and no tendency in depth, with values between 7.1 and 7.8 (mean: 7.4, sd: 0.1, n: 75). The content of CaCO₃ ranged between 1 and 32 % (mean: 11.1, sd: 9.6, n: 75) for all profiles, with decreasing values in greater soil depth. The less weathered or unweathered glacial and glacio-fluvial sediments (all 2C horizons) showed less evidence of decalcification. The SOC contents were between 0.1 and 3.1 % (mean: 0.9, sd: 0.5, n: 75) and for all profiles the maximum values were found in the present and buried topsoil and in the deepest colluvial horizons. The carbon to nitrogen ratio (C/N) mimicked the depth gradients of SOC, showing narrower ratios at lower carbon states. In total the ratio varied between 5 and 12 (mean: 7.8, sd: 3.0, n: 75) (Tab. 1).

Table 1: Pedological data of selected profiles (units are given as mass-%), n.a.: not analyzed, LoD: Limit of detection. Soils according to U.S. Soil Taxonomy (family level): Dystrudepts.

| Horizon | Depth [cm] | CaCO ₃ [%] | pH [CaCl ₂] | Clay, silt, sand [%] | SOC [%] | C/N |
|---|------------|-----------------------|-------------------------|----------------------|---------|-------|
| ABR W1, Calcaric Cambisol (Endoclayic, Pantocolluvic, Epiloamic, Ochric, Epiraptic) | | | | | | |
| Ap | 0-10 | 28 | 7.6 | 32, 47, 21 | 0.5 | 6 |
| M1 | 10-50 | 26 | 7.6 | 36, 45, 19 | 0.4 | 5 |
| M2 | 50-105 | 20 | 7.6 | 40, 43, 17 | 0.3 | 5 |
| M3 | 105-153 | 10 | 7.6 | 48, 40, 12 | 0.5 | 6 |
| M4 | 153-180 | 2 | 7.6 | 53, 37, 10 | 0.9 | 9 |
| M5 | 180-206 | 1 | 7.4 | 52, 38, 10 | 1.0 | 10 |
| M6 | 206-215 | 1 | 7.4 | 50, 39, 11 | 1.2 | 11 |
| 2Bwig/2Ahb | 215-235 | 1 | 7.3 | 50, 40, 10 | 1.4 | 12 |
| 2Bwig | 235-282+ | 1 | 7.3 | 65, 31, 4 | 0.5 | 7 |
| ABR W2, Calcaric Pantocolluvic Regosol (Acric, Pantoclayic, Ochric, Endoraptic) | | | | | | |
| Ap | 0-30 | 27 | 7.4 | 34, 48, 18 | 1.1 | 7 |
| M1 | 30-82 | 29 | 7.5 | 34, 44, 22 | 0.2 | < LoD |
| M2 | 82-98 | 28 | 7.5 | 35, 44, 21 | 0.1 | < LoD |
| M3 | 98-155 | 15 | 7.5 | 46, 39, 15 | 0.5 | 6 |
| M4 | 155-170 | 4 | 7.6 | 54, 36, 10 | 1.0 | 8 |
| M5 | 170-185 | 2 | 7.5 | 54, 34, 12 | 1.1 | 9 |
| M6 | 185-215 | 1 | 7.4 | 57, 35, 8 | 1.6 | 11 |
| 2Bwig/2Ahb | 215-230 | 1 | 7.4 | 59, 35, 7 | 1.7 | 11 |
| 2Bwig | 230-262 | 1 | 7.3 | 62, 33, 6 | 0.9 | 8 |
| 2CBg | 262-290+ | 17 | 7.6 | 45, 38, 16 | 0.3 | < LoD |
| ABR WA1, Calcaric Pantocolluvic Regosol (Acric, Anoloamic, Ochric, Amphiraptic, Bathyclayic) | | | | | | |

| | | | | | | |
|------------|----------|----|-----|------|-----|-------|
| Ap | 0-25 | 31 | 7.1 | n.a. | 0.9 | 6 |
| M1 | 25-52 | 30 | 7.4 | n.a. | 0.3 | < LoD |
| M2 | 52-94 | 27 | 7.4 | n.a. | 0.2 | < LoD |
| M3 | 94-130 | 23 | 7.5 | n.a. | 0.2 | < LoD |
| M4 | 130-163 | 20 | 7.5 | n.a. | 0.5 | 6 |
| M5 | 163-200 | 10 | 7.4 | n.a. | 0.8 | 7 |
| M6 | 200-220 | 6 | 7.4 | n.a. | 1.0 | 9 |
| 2Bwig/2Ahb | 220-260 | 2 | 7.3 | n.a. | 1.3 | 10 |
| 2Bwig | 260-275 | 8 | 7.4 | n.a. | 0.7 | 5 |
| 2CBg | 275-290+ | 21 | 7.4 | n.a. | 0.1 | < LoD |

ABR WA2, Calcaric Cambisol (Pantocolluvic, Humic, Anoloamic, Bathyclayic)

| | | | | | | |
|------|----------|----|-----|------|-----|----|
| Ah | 0-20 | 11 | 7.3 | n.a. | 2.4 | 8 |
| M1 | 20-64 | 14 | 7.3 | n.a. | 0.9 | 6 |
| M2 | 64-95 | 11 | 7.4 | n.a. | 0.8 | 8 |
| M3 | 95-124 | 7 | 7.4 | n.a. | 0.9 | 7 |
| M4 | 124-150 | 11 | 7.4 | n.a. | 0.7 | 7 |
| M5 | 150-190 | 6 | 7.5 | n.a. | 0.9 | 8 |
| M6 | 190-205 | 6 | 7.5 | n.a. | 1.0 | 9 |
| M7 | 205-225 | 2 | 7.5 | n.a. | 1.3 | 10 |
| 2Bwg | 225-250+ | 1 | 7.4 | n.a. | 1.1 | 9 |

ABR SA1, Calcaric Cambic Phaeozem (Acric, Anoclayic, Pantocolluvic, Bathyloamic)

| | | | | | | |
|------|----------|----|-----|------|-----|---|
| Ah | 0-20 | 14 | 7.2 | n.a. | 2.2 | 9 |
| M1 | 20-33 | 15 | 7.3 | n.a. | 1.6 | 8 |
| M2 | 33-50 | 15 | 7.4 | n.a. | 0.9 | 8 |
| M3 | 50-63 | 16 | 7.4 | n.a. | 0.7 | 8 |
| M4 | 63-75 | 13 | 7.4 | n.a. | 0.7 | 7 |
| M5 | 75-88 | 6 | 7.5 | n.a. | 0.9 | 8 |
| M6 | 88-100 | 2 | 7.5 | n.a. | 1.1 | 9 |
| M7 | 100-128 | 1 | 7.3 | n.a. | 1.2 | 9 |
| 2Bw | 128-145 | 1 | 7.3 | n.a. | 0.9 | 8 |
| 2CBw | 145-200+ | 17 | 7.4 | n.a. | 0.6 | 6 |

ABR SA2, Calcaric Pantocolluvic Regosol (Acric, Anoclayic, Humic, Endoraptic, Bathyloamic)

| | | | | | | |
|----|---------|----|-----|------------|-----|---|
| Ah | 0-27 | 11 | 7.3 | 47, 31, 22 | 2.1 | 8 |
| M1 | 27-40 | 10 | 7.3 | 52, 32, 26 | 1.2 | 7 |
| M2 | 40-66 | 10 | 7.4 | 51, 31, 26 | 0.8 | 7 |
| M3 | 66-80 | 9 | 7.4 | 45, 28, 27 | 0.8 | 7 |
| M4 | 80-95 | 11 | 7.4 | 43, 29, 28 | 0.8 | 7 |
| M5 | 95-123 | 8 | 7.4 | 45, 28, 27 | 0.9 | 8 |
| M6 | 123-150 | 8 | 7.4 | 43, 27, 28 | 0.8 | 8 |

| | | | | | | |
|---|----------|----|-----|------------|-----|-------|
| M7 | 150-172 | 6 | 7.4 | 42, 29, 29 | 0.8 | 8 |
| 2Apb | 172-190 | 2 | 7.2 | 42, 31, 27 | 0.6 | 7 |
| 2Bw | 190-215+ | 1 | 7.2 | 51, 25, 24 | 0.5 | 6 |
| ABR S30, Hypereutric Epicalcaric Cambisol (Pantocolluvic, Pantoloamic, Ochric) | | | | | | |
| Ap | 0-13 | 11 | 7.6 | n.a. | 1.5 | 8 |
| M1 | 13-45 | 11 | 7.6 | n.a. | 0.6 | 7 |
| M2 | 45-72 | 3 | 7.6 | n.a. | 0.7 | 8 |
| M3 | 72-90 | 1 | 7.5 | n.a. | 0.8 | 8 |
| M4 | 90-140 | 1 | 7.5 | n.a. | 0.8 | 8 |
| M5 | 140-150 | 1 | 7.4 | n.a. | 0.7 | 8 |
| 2Bwg | 150-212 | 3 | 7.3 | n.a. | 0.4 | 5 |
| 2CBg | 212-240+ | 25 | 7.8 | n.a. | 0.2 | < LoD |
| ABR M, Hypereutric Epicalcaric Endoskeletal Cambisol (Pantocolluvic, Humic, Anoloamic, Amphiraptic, Bathyclayic) | | | | | | |
| Ap | 0-10 | 22 | 7.3 | n.a. | 3.1 | 9 |
| Ap2 | 10-20 | 23 | 7.5 | n.a. | 1.5 | 7 |
| M1 | 20-50 | 28 | 7.6 | n.a. | 0.9 | 7 |
| M2 | 50-90 | 22 | 7.7 | n.a. | 0.4 | 4 |
| M3 | 90-110 | 1 | 7.5 | n.a. | 0.9 | 8 |
| 2Bwg/2Ahb | 110-140 | 1 | 7.4 | n.a. | 0.8 | 10 |
| 2Bwig | 140-160 | 1 | 7.4 | n.a. | 0.5 | 7 |
| 2CBg | 160-212 | 10 | 7.6 | n.a. | 0.2 | 6 |
| 2Cg | 212-244+ | 32 | 7.8 | n.a. | 0.1 | < LoD |

3.2 Dating

All measurements revealed bright and fast decaying luminescence signals indicative of quartz with a dominant fast component. At least 19 aliquots were measured per sample, and the resulting D_e distributions were analysed with respect to their overdispersion, kurtosis and skewness (Bailey and Arnold, 2006). The samples GI520-GI531 (ABR W1 and ABR W2), GI743 (ABR SA2), GI 786 and GI788 (both ABR M) showed narrow and symmetric D_e distributions, typical for complete bleaching, whereas all other samples (mainly from ABR SA1 and ABR M) displayed strong indications for incomplete bleaching through positively skewed and overdispersed D_e distributions (see Fig. S1). For well bleached samples, the mean D_e was calculated using the Central Age Model (Galbraith et al., 1999) and for incompletely bleached samples, a bootstrap Minimum Age Model (Galbraith et al., 1999; Cunningham and Wallinga, 2012) was applied. A sigma b-value of 0.12-0.15 was used in this model, according to the lowest overdispersion of a well bleached sample from the same profile. Resulting ages are in correct chronostratigraphic order and are summarised in Fig. 4 (see also see Scherer et al., 2020), along with D_e values and the underlying age model.

The AMS ^{14}C ages showed a correct chronological trend, and only a few minor age reversals occurred on a 2-sigma significance level (Fig. 4; see also Scherer et al., 2020). The comparison of OSL and ^{14}C ages at the same sampling depth mostly showed older radiocarbon ages in younger dated sediments (especially ABR W1 and ABR W2). The overall range of ^{14}C and OSL ages was narrower at the profile ABR SA2.

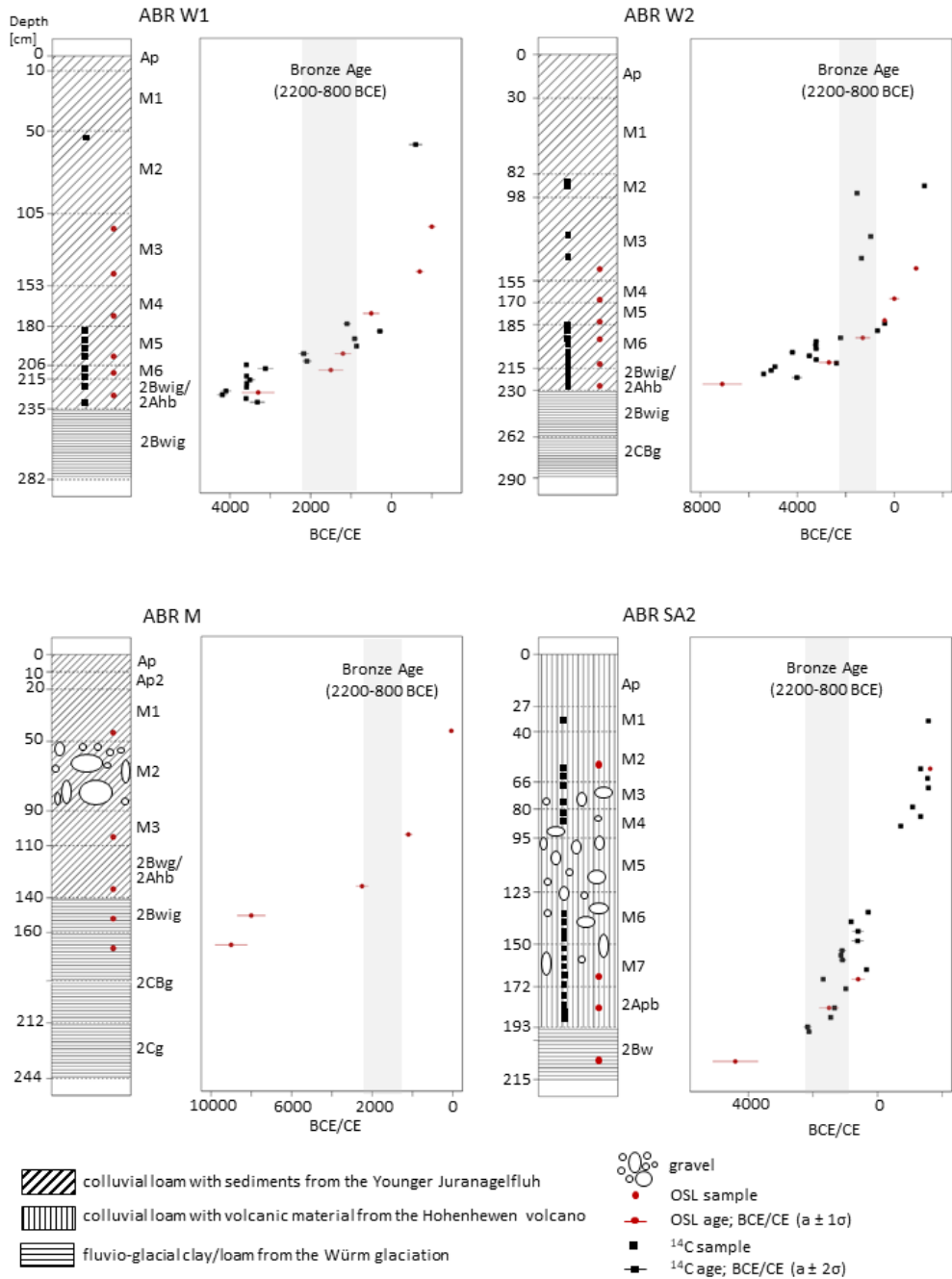


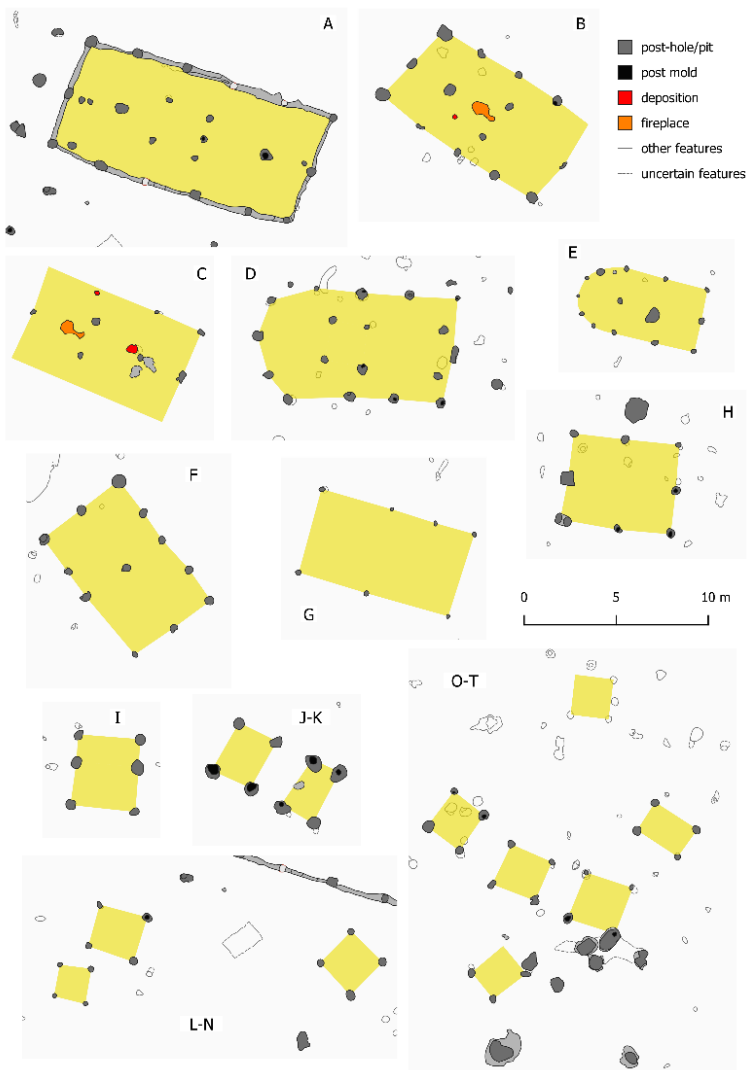
Figure 4: Colluvial profiles used for OSL and ^{14}C dating. Profile designations are given in bold, colluvial horizons are designated as M.

3.3 Archaeology

355 The majority of MBA finds was observed in the central part of the excavation (Fig. 2, Höpfer et al., accepted). Most MBA features were from wooden architecture, especially in the form of several hundred post-holes. At least 20 buildings, of mostly rectangular shapes but varying sizes and layouts, could be reconstructed (Fig. 5). Ten buildings were reconstructed with smaller areas (ca. 3-7 m²) and square or short-rectangular shapes (Fig. 5, J-T). These were grouped around the presumed MBA settlement centre. A small kiln was observed, while a small pit to the north contained a 2 kg fragment of a copper ingot. Several
360 shallow pits and stone clusters filled with heat stones were grouped around the presumed settlement centre. Up to ca. 50 m southeast of these domestic structures, several ceramic pots and larger firepits with heat stones were found. The ceramic pots were apparently set into the ground and sometimes contained heat stones. Several wagon tracks and linear discolorations or stone clusters were documented, albeit of mostly uncertain age. North of the settlement, a small kettle hole with a stone plaster was described. The pottery from these features has its biggest similarities with inventories from the later MBA (ca. 1450-1300
365 BCE). Among the characteristic elements are thick flattened rims on short and steep vessel mouths, raw slurried surfaces, lobes on the body and rim of larger pots and the occasional notched decoration on finer pottery (Krumland, 1998; Rigert et al., 2001; Honig, 2008).

3.4 Archaeobotanical proxies

In total 555 charcoal fragments were collected from the colluvial profiles ABR W2, ABR SA1 and ABR SA2. Although ca.
370 1.5 m of ABR W2 were not sampled for charcoal determination, the more than 1 mm charcoal output was the highest compared to the other two profiles (50 %). Of the charcoal fragments, 29 % were collected from the ABR SA2 profile, and 21 % from ABR SA1. Amongst the charcoal proportions from ABR W2, between a depth of 141 and 262 cm was only dicotyledonous woods. *Quercus* sp. were strongly represented throughout this depth. *Fagus* sp. could be identified in the horizons M4 to M6 (165-200 cm). Additionally, a few *Fraxinus* sp. fragments were found in the horizon M6 (200-215 cm) (Fig. 6, a). The charcoal
375 spectra of ABR SA1 showed the following trend: From horizon M7 onwards (110 cm), only dicotyledons were present, amongst which *Quercus* sp. were strongly represented. Charcoal fragments of *Quercus* sp. were not found in a soil depth lower than 73 cm, whereas *Fagus* sp. occurred in the horizons Ap to M4 (0-73 cm) only. From the modern surface to 85 cm (Ap-M5) conifers appear, some of which could be identified as *Pinus* sp. (Fig. 6, b). A considerable number of charcoal fragments from ABR SA2 could not be determined in detail, because they were too small, but are attributed as dicotyledonous. In horizon
380 M6 (133-138 cm), *Quercus* and *Fagus* sp. dominated the charcoal spectra. In horizons M3 to M5 single fragments were allocated to *Pinus* sp., *Quercus* sp., *Prunus* sp. and conifer wood in general, whereas the majority were determined as dicotyledonous only. In horizons Ap, M1 and M2 similar amounts of conifer (*Pinus* sp., *Abies* sp.) and deciduous species (*Quercus* sp., *Fagus* sp., *Populus/Salix* sp.) were identified (Fig. 6, c).



385 **Figure 5:** House floor plans of the Middle Bronze Age (MBA) at the Anselingen excavation.

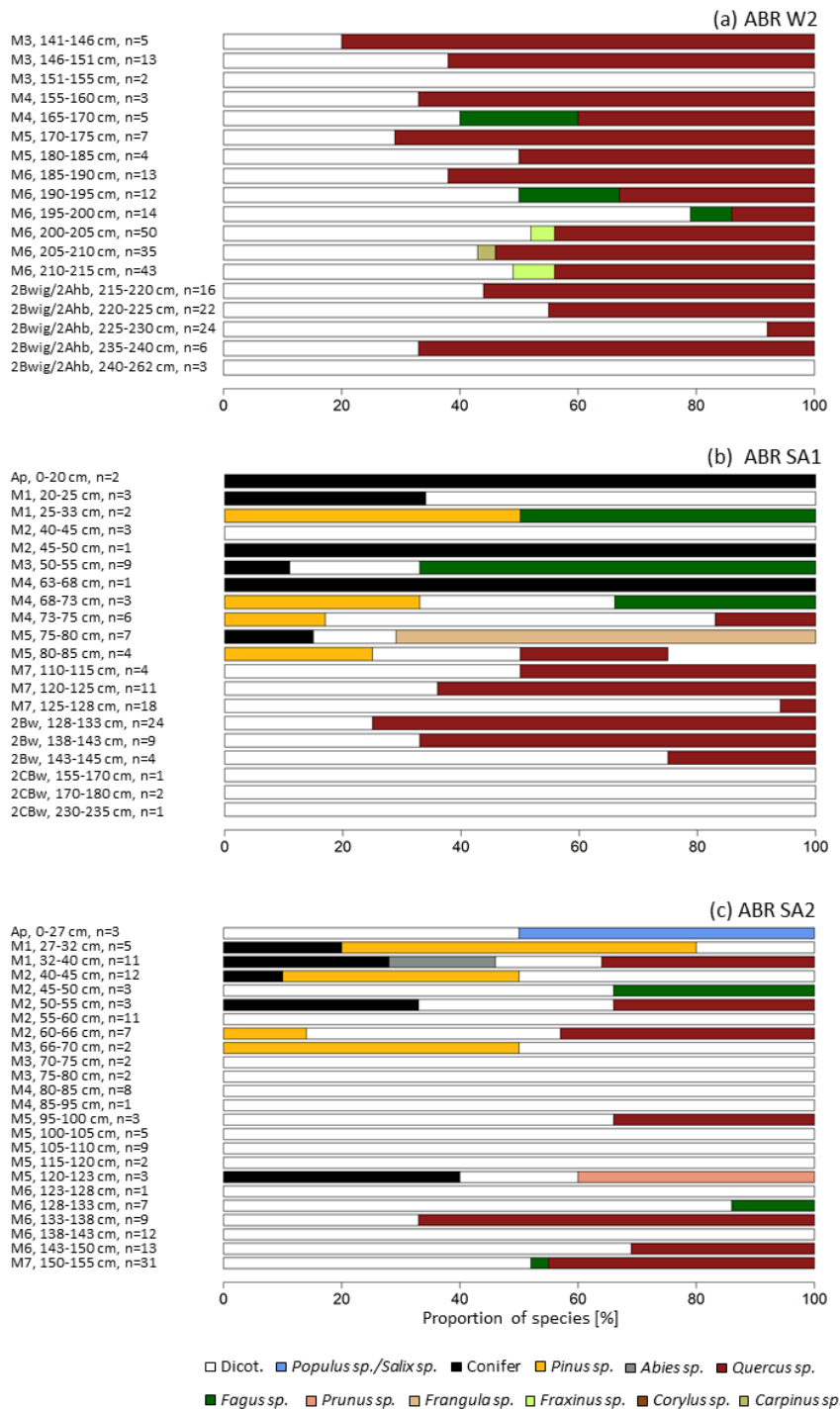


Figure 6: Percentage distribution of charcoal taxa for different sampling depths at the profiles ABR W1 (a), ABR SA1 (b), ABR SA2 (c) (n=number of identified charcoal fragments). Particle size ranges: 1-2 mm, > 2mm.

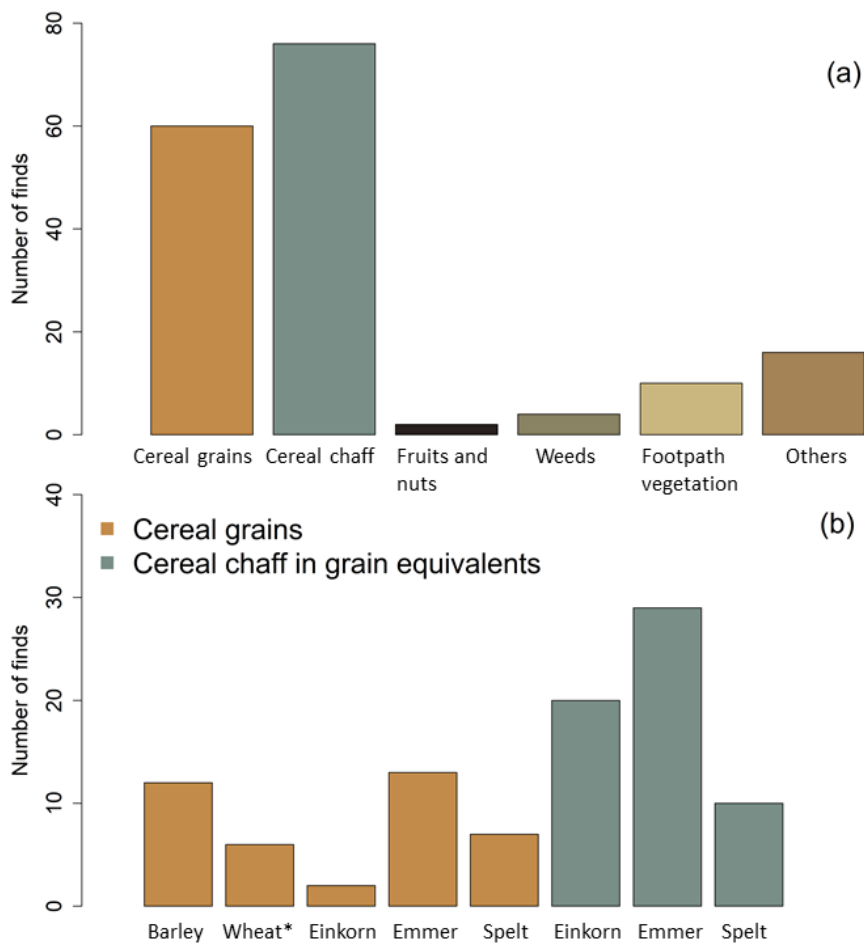
390 Phytoliths were found in all investigated samples of profiles ABR W1, ABR W2 and ABR SA2 (Tab. 2). The absolute phytolith concentrations of profile ABR W1 were not comparable with those of ABR W2 and ABR SA2 due to different analytical approaches. However, a relative comparison of the phytolith concentrations and different morphotypes and their anatomical origin was possible.

The phytolith concentrations showed an increasing trend with depth for all investigated profiles. The highest values were found in the buried topsoil horizons (2Bwig/2Ahb; 2Apb) and the lowest values in the present topsoil and buried subsoil horizons. 395 The morphological analysis revealed that all profiles were similar in their morphotype assemblages. Monocotyledonous morphotypes were the most common group identified. At all profiles 68 % (sd: 14.0 %, n: 24) of the phytoliths were assigned to grasses, whereas 16 % (sd: 10.0 %, n: 24) were determined as dicotyledonous morphotypes. On average, 15 % (sd: 10.8, n: 24) of the phytoliths appeared to be weathered, so that a morphological or anatomical identification was not possible. Moreover, grass phytoliths were divided into the different anatomical plant parts in which they were formed. At all profiles, 400 short cell morphotypes, commonly produced in leaves and stems, occurred at difference rates, ranging from 9 % to 50 % (mean: 30 %, sd: 9.3 %, n: 24). The majority of short cells recovered from these samples were those associated with the C₃ Pooideae subfamily, to which cereals also belong (e.g. rondels). Grass phytoliths derived from their floral parts ranged between 0 and 26 % (mean: 6 %, sd: 6.5, n: 24), while higher proportions were identified in the samples of ABR W1 (mean: 13 %, sd: 6.0, n: 9). Phytoliths stemming from the inflorescence plant parts were minor in the samples of ABR W2 (mean: 2 %, sd: 1.6, 405 n: 8) and ABR SA2 (mean: 3 %, sd: 1,9, n: 6). Epidermal cells from grass leaves and stems were observed with an average amount of 63 % (sd: 12.8 %, n: 24).

In total, 163 charred archaeobotanical remains were found in different archaeological features of the ABR site (Fig. 7). They were recovered through wash-over flotation from ca. 150 liters of sediment and reached a concentration of ca. one plant macro remain per liter. The majority of these finds comprises chaff and grains of cereals like barley (*Hordeum distichon/vulgare*), 410 emmer (*Triticum dicoccum*), einkorn (*Triticum monococcum*), spelt (*Triticum spelta*) and free threshing wheat (*Triticum aestivum/turgidum*) and occur mostly in fire pits and architectural remains. The chaff originates exclusively from hulled wheats, namely einkorn, emmer and spelt. Figure 7 (b) shows the grain equivalents for the chaff, i.e. how many grains were developed in the glumes and spikelets of the respective species. A fragment of hazelnut (*Corylus avellana*) shell and a nutlet that probably derived from a raspberry, blackberry or dewberry (cf. *Rubus*) indicate the use of nuts and fruits from the 415 surrounding vegetation. The number of wild plant finds was also low since only a few seed remains from weeds and footpath vegetation occur in the studied material (Fig. 7, a).

Table 2: Phytolith concentrations, relative abundances of phytoliths (monocotyledonous, dicotyledonous) and anatomical origin of phytoliths (grasses, dicotyledonous) of selected profiles. Percentages are calculated over the total number of morphotypes identified in each 420 soil sample; at least 200 morphotypes were identified in each sample (n.i. = not identified); *: Leaves only.

| Profile | Horizon | Sampling depth [cm] | Phytolith conc. [number per gram sediment] | Rel. abundances | | | Monocot. grasses | | | Dicot. | |
|---------|---------|------------------------|---|-----------------|--------|-----------|------------------|----------------|-------------|--------------------|---------------|
| | | | | Monocot. | Dicot. | Weathered | Leaves and stems | Inflorescences | Short cells | Leaves (and stems) | Wood and bark |
| | | | | [%] | | | | | | | |
| ABR W1 | Ap | 0-10 | 3,428 | 43 | 21 | 36 | 40 | 10 | 50 | 2* | 19 |
| ABR W1 | M5 | 180-185 | 5,174 | 59 | 16 | 25 | 52 | 8 | 40 | 4* | 12 |
| ABR W1 | M5 | 190-195 | 15,948 | 60 | 20 | 20 | 43 | 26 | 31 | 3* | 17 |
| ABR W1 | M5 | 200-206 | 17,111 | 52 | 18 | 30 | 56 | 15 | 29 | 5* | 13 |
| ABR W1 | M6 | 206-211 | 26,501 | 62 | 15 | 23 | 52 | 15 | 33 | 4* | 11 |
| ABR W1 | M6 | 211-216 | 10,459 | 57 | 19 | 24 | 51 | 8 | 41 | 3* | 16 |
| ABR W1 | IIP-fAh | 216-221 | 36,401 | 60 | 19 | 21 | 55 | 16 | 29 | 4* | 14 |
| ABR W1 | IIP-fAh | 226-231 | 42,185 | 61 | 17 | 22 | 56 | 7 | 37 | 4* | 13 |
| ABR W1 | IISdw-P | 240-282 | 7,041 | 51 | 9 | 40 | 55 | 10 | 35 | 2* | 6 |
| ABR W2 | M6 | 190-195 | 735,215 | 81 | 8 | 11 | 77 | 0 | 23 | 100 | 0 |
| ABR W2 | M6 | 195-200 | 523,841 | 79 | 11 | 10 | 82 | 0 | 18 | 100 | 0 |
| ABR W2 | M6 | 200-205 | 908,928 | 85 | 8 | 7 | 88 | 3 | 9 | 100 | 0 |
| ABR W2 | M6 | 205-210 | 753,596 | 93 | 5 | 2 | 76 | 0 | 24 | 100 | 0 |
| ABR W2 | M6 | 210-215 | 670,884 | 87 | 10 | 3 | 78 | 3 | 19 | 100 | 0 |
| ABR W2 | IIP-fAh | 215-220 | 1,481,459 | n.i. | n.i. | n.i. | n.i. | n.i. | n.i. | n.i. | n.i. |
| ABR W2 | IIP-fAh | 220-225 | 1,366,765 | 78 | 12 | 10 | 71 | 2 | 27 | 95 | 5 |
| ABR W2 | IIP-fAh | 225-230 | 590,335 | 73 | 20 | 7 | 58 | 3 | 39 | 67 | 33 |
| ABR W2 | IISdw-P | 230-235 | 318,593 | 75 | 14 | 11 | 77 | 4 | 19 | 100 | 0 |
| ABR SA2 | Ap | 0-27 | 356,075 | 43 | 57 | 0 | 67 | 0 | 33 | 100 | 0 |
| ABR SA2 | M7 | 170-172 | 1,246,262 | 75 | 12 | 13 | 56 | 5 | 39 | 100 | 0 |
| ABR SA2 | IIfAp | 172-177 | 2,646,775 | 66 | 20 | 14 | 65 | 4 | 31 | 85 | 15 |
| ABR SA2 | IIfAp | 177-182 | 3,242,155 | 83 | 14 | 3 | 68 | 1 | 31 | 97 | 3 |
| ABR SA2 | IIfAp | 182-187 | 2,288,357 | 72 | 20 | 8 | 59 | 4 | 37 | 98 | 2 |
| ABR SA2 | IIfAp | 187-190 | 2,380,259 | 76 | 13 | 11 | 72 | 3 | 25 | 94 | 6 |



425 **Figure 7:** Charred plant macro-remains identified in the archaeological features of Anselfingen Amount of plant macrofossils from the main economic and ecological groups (a) and amount of the main archaeological finds of cereal crops (b). Wheat*: Fresh threshing wheat.

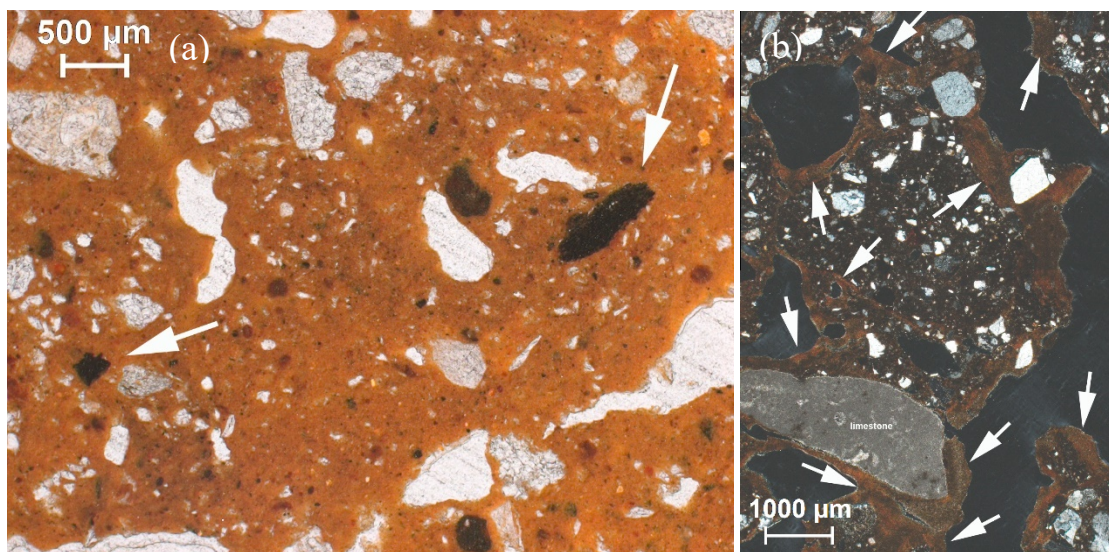
3.5 Micromorphology

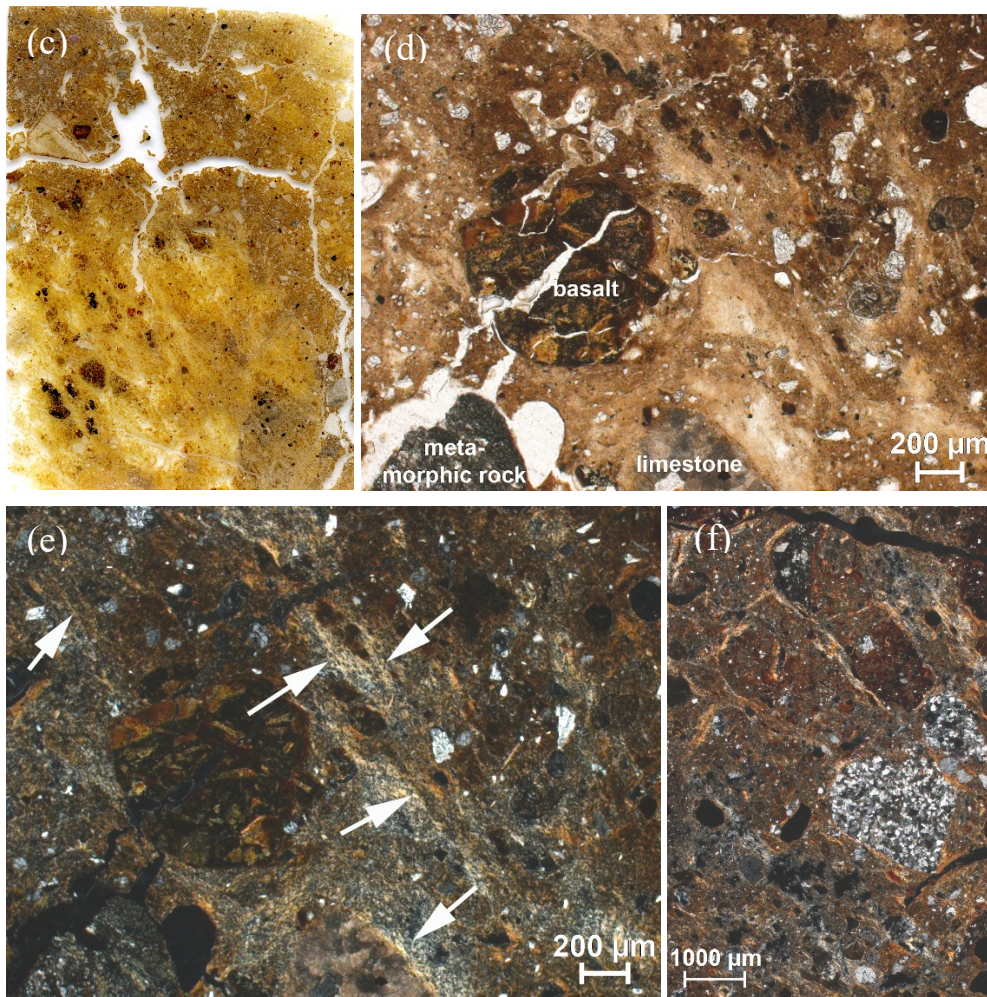
Two thin sections from the 2Apb horizon at the ABR SA2 profile were analyzed to further support MBA ploughing activity. The thin section from the upper part of the 2Apb horizon (ABR SA2, 183-193 cm) had a channel to a weakly developed angular blocky microstructure with few partially accommodating planes. A dark brown limpidity, with an undifferentiated b-fabric, was pronounced for most parts of the micromass, with the exception of rounded peds within the groundmass, which showed a light brown limpidity and stipple speckled to mosaic-speckled b-fabric. Despite the non-calcareous micromass, fragments of limestone and oval pellets of micritic calcium carbonate occurred. Throughout the thin section there were small fragments of charcoal and fragments of basaltic, metamorphic and magmatic rocks (Fig. 8, a). Partially laminated, very dusty thick (up to 1600 μm) dark brown clay coatings with embedded coarse material (quartz and feldspars) with a size of up to 700 μm were particularly common in the macrochannels (Fig. 8, b).

430
435

The thin section from the lower part of the 2A_{pb} horizon (ABR SA2, 190-200 cm) had a well-developed subangular to angular blocky microstructure with well to partially accommodating planes (Fig. 8, c). A dark brown limpidity of the micromass with a predominantly undifferentiated b-fabric, was pronounced for about two thirds of the thin section, with the exception of rounded and angular peds within the groundmass, which showed a light brown limpidity and stipple speckled to mosaic-speckled b-fabric. The last third is covered by an almost rectangular area with sharp boundaries and a light brown limpidity of the micromass (Fig. 8, d), which had a stipple-speckled, mosaic speckled and striated b-fabric. In many parts, granostriated b-fabric was present. Within this area, bands, inclined at about 45°, alternate with coarse material "floating" in fine material with bands consisting mainly of clay and silt - micromass with mosaic to striated b-fabric (Fig. 8, e). Additionally, large (up to 2000 μm) rounded to subrounded peds were frequently occurring (Fig. 8, f). The coarse material consisted mainly of basaltic fragments and weathered volcanic shards, limestone fragments, micritic pellets and, to a lesser extent, magmatic and metamorphic fragments and fragments of charcoal.

Many small coprolites (50-100 μm) could be detected under fluorescent light. Some of the micritic carbonate pellets showed green autofluorescence at 470 nm. Similar to the upper thin section, very dusty thick (however only up to 800 μm) dark brown clay coatings, together with coarse material (metamorphic and magmatic rock fragments) with a size of up to 2000 μm, were particularly common in the macrochannels.





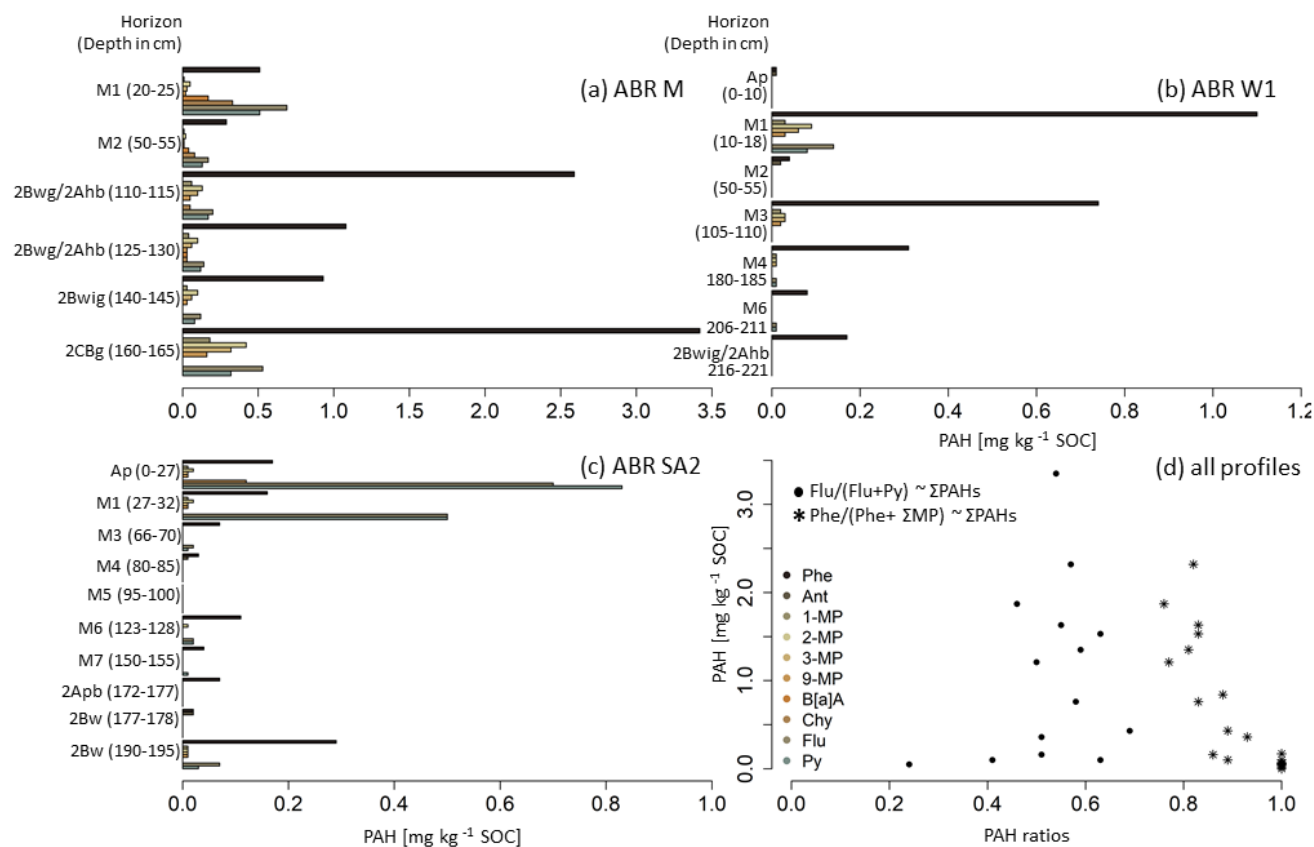
455 **Figure 8:** Micromorphological analysis of the buried plough horizon (2Apb). (a) white arrows point at fragments of charcoals (< 500µm) – ABR SA2 183-193 cm: OIL, ppl; (b) very dusty clay coating (white arrows) with incorporated coarse material – ABR SA2 183-193 cm: xpl; (c) scan of the thin section 6 x 9 xm – ABR SA2 180-190 cm; (d) compacted (low porosity) rounded to subrounded peds and rock fragments; some channels and one partially accommodating plane are present. Some peds are surrounded by a granostriated b-fabric – ABR SA2 180-190 cm; xpl; (e, f) about 45° inclined bands with alternating coarse and fine material; mosaic to striated b-fabric (white arrows) – ABR SA2 180-190 cm; (e) - ppl; (f) – xpl.

460 3.6 Biogeochemical proxies

Relative changes in polycyclic aromatic hydrocarbon (PAH) input were indicated by PAH to SOC normalization. The suite of individual PAHs was dominated by phenanthrene, fluoranthene and pyrene for all horizons of the analysed profiles ABR M, ABR W1 and ABR SA2 (Fig. 9, a-c). The amounts of anthracene, methylated phenanthrenes, benz[a]anthracene and chrysene were low for all samples. The suite of PAHs was most complete in ABR M, as well as in the upper horizons of ABR W1 and
 465 ABR SA2. The maximum concentration of phenanthrene were observed in the buried topsoil and subsoil horizons of ABR M (2Bwg, 110-115; 2CBg, 160-165 cm). In the M5 horizon of ABR SA2, no PAHs were detected. The sum of three-ring PAHs

(phenanthrene, anthracene, methylated phenanthrenes) dominated the lower horizons, while four-ring PAHs (fluoranthene, pyrene, chrysene, benz[a]anthracene) revealed considerable amounts in the upper first horizons of ABR M (M1, 20-25 cm; M2, 50-55 cm) and ABR SA2 (Ap, 0-27 cm; M1, 27-32 cm).

470 The ratio of fluoranthene to fluoranthene plus pyrene (Flu/Flu+Py) was higher than 0.5 in 77 % of the values. The ratio was lower in ABR W1 (M6, 206-211 cm: 0.41) and in ABR SA2 (Ap, 0-27 cm: 0.46; M7, 150-155 cm: 0.24). The phenanthrene to phenanthrene plus the sum of methylated phenanthrenes ranged between 0.76 and 1 (Fig. 9, d). The pattern for both ratios was similar and with a distribution of the ratios independent of the sum of PAH concentrations.



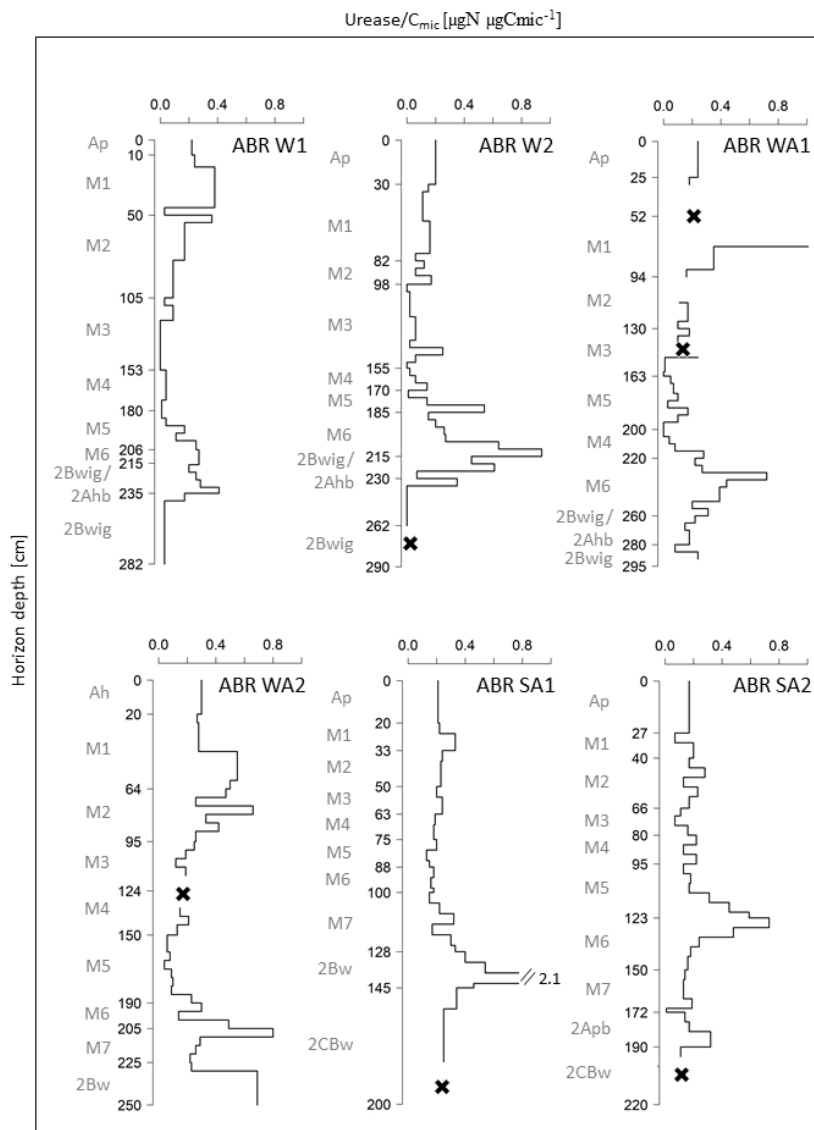
475 **Figure 9:** Polycyclic aromatic hydrocarbons (PAHs) with SOC normalization (a-c) of selected colluvial profiles and sampling depths (cm); PAH ratios vs. sum of PAHs (d). Phe: Phenanthrene, Ant: Anthracene, 1-MP: 1-Methyl-Phenanthrene, 2-MP: 2-Methyl-Phenanthrene, 3-MP: 3-Methyl-Phenanthrene, 9-MP: 9-Methyl-Phenanthrene, B[a]A: Benz[a]anthracene, Chy: Chrysene, Fl: Fluoranthene, Py: Pyrene.

The urease activity to microbial biomass (C_{mic}) ratio was determined for colluvial profiles ABR W1, ABR W2, ABR WA1, ABR WA2, ABR SA1 and ABR SA2 and varied between 0 and $2.1 \mu\text{gN } \mu\text{gC}_{\text{mic}}^{-1}$ (Fig. 10). All profiles showed a comparable trend with increasing values with greater soil depth. A peak in the urease activity/ C_{mic} ratio was either reached in the buried topsoil horizon (ABR W1, 2Bwig/Ahb, 216-235 cm; ABR WA1, 2Bwig/Ahb, 220-260 cm; ABR SA1, 2Bw, 128-145 cm) or in the deepest colluvial horizon (ABR W2, M6, 185-215 cm; ABR WA2, M7, 205-225 cm) and was in all cases considerably higher than the ratios of the modern topsoil horizon. Only for ABR SA2, the peak in urease activity/ C_{mic} ratio occurred in the

480

upper part of the profile (M6, 123-150 cm). Besides the maximum ratios, smaller peaks in several profiles were also observed.

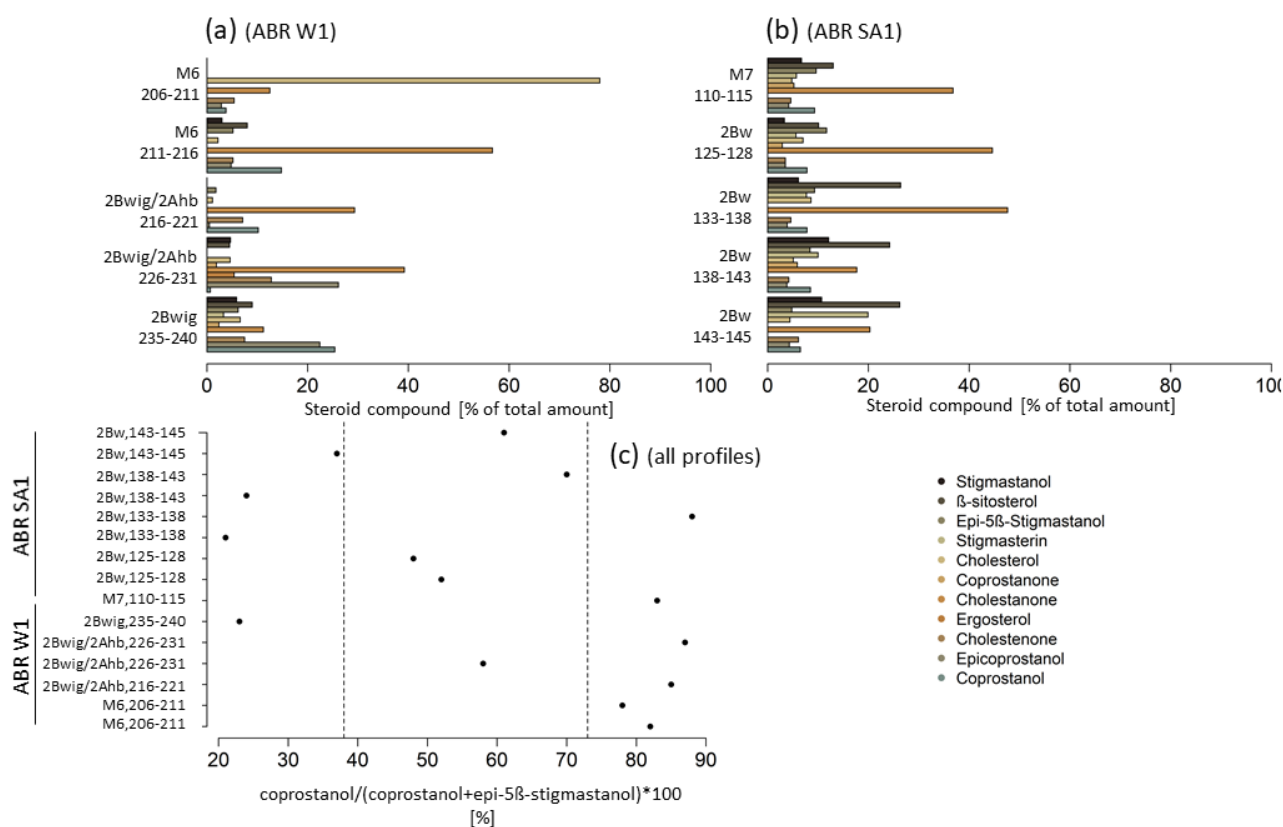
485 The peak value at ABR SA1 was remarkable that it far exceeded other values from the same profile. A positive correlation of urease [$\mu\text{gN gTS}^{-1}\cdot 2\text{h}$] and SOC was observed within 0 and 130 ± 20 cm for most of the analysed profiles (R^2 : 0.82). Below this depth, the correlation of urease and SOC was weaker (R^2 : 0.44). Clay and urease activity were not (ABR W1, ABR W2) or only weakly positively correlated (R^2 : 0.37, ABR SA2) (Tab. S3).



490 **Figure 10:** Depth profiles of Urease/ C_{mic} ratio of selected colluvial profiles. “x” = not analysed.

Steroid compositions were analysed for selected horizons of profiles ABR W1 and ABR SA1 (Fig. 11, a-b). In total, eleven different compounds were identified comprising the molecular groups of stanols (coprostanol, epicoprostanol, 5β -stigmastanol,

epi-5 β -stigmastanol), stanones (cholestanone, coprostanone, cholestenone) and Δ^5 -sterols (cholesterol, β -sitosterol, ergosterol, β -stigmasterol). At ABR W1 coprostanol, epicoprostanol, cholestanone and cholesterol were dominating the molecular assemblages, whereas the relative amount of coprostanol and epicoprostanol was decreasing from horizon M6 (206-211 cm) to 2Bwig (235-240 cm) and an opposite trend was observed for cholestanone and cholesterol. At ABR SA1, cholestanone also increased with depth, while the relative proportions of coprostanol and epicoprostanol were less distinct compared to ABR W1. Further, at ABR SA1 considerable proportions of β -sitosterol and 5 β -stigmastanol and epi-5 β -stigmastanol were observed. At ABR W1, the ratio of coprostanol/(coprostanol+epi-5 β -stigmastanol)*100 was mainly greater than 73 % for the colluvial horizon M6 (206-211 cm) and the buried topsoil 2Bwig/Ahb (216-221 cm, 226-231 cm). In the buried subsoil horizon 2Bwig (235-240 cm), a single value below 38 % was calculated. The profile ABR SA1 showed ratios below 38 % which mainly occurred in the buried subsoil horizon 2Bw (133-138 cm, 138-145 cm) and above 73 % in the colluvial horizon M7 (110-115 cm) and buried subsoil horizon 2Bw (133-138 cm) (Fig. 11, c).



505 **Figure 11:** Steroid compounds as percent of total amount (a-b) of selected colluvial profiles and sampling depths (cm); Steroid ratio according to Leeming et al. (1997) (c). Values < 38 % indicate herbivorous faeces, values > 73 % indicate omnivorous faeces.

The heavy metal contents showed two main patterns (Fig. 12). First, the Pb, Cu and As contents were significantly lower than the Zn, Ni and Cr contents for all colluvial profiles. Secondly, different values were observed for the different soil substrates, with the highest heavy metal contents in the (b) basaltic sediments of the Hohenhewen volcano and the lowest in the (a)

510 sediments of the Younger Juranagelfluh. In most cases, the 25th and 75th quartile \pm 1.5 Interquartile range mimicked the natural
 variation of the heavy metal contents, depending on the substrate, according to the data of the geological state office of Baden-
 Württemberg (LGRB, 2020). Positive outliers, which indicate human influence, were detected at the colluvial profiles ABR
 S30 (Cu, M4 horizon, 110-115 cm, sediments of the Younger Jurannagelfluh), ABR WA2 (As, M7, 220-225 cm; Pb, Ap, 0-
 515 20 cm, sediments of the Hohenhewen volcano) and ABR SA1 (Zn, M6-M7, 100-128 cm, sediments of the Hohenhewen
 volcano). Heavy metals analysed from sediment samples from the Younger Juranagelfluh and the glacial and fluvio-glacial
 sediments of the Würm glaciation correlated mostly with CaCO₃. No correlation was observed between heavy metals and
 SOC, pH-value as well as heavy metals from samples of the sediments of the Hohenhewen volcano with CaCO₃, SOC and
 pH-value (Tab. S4).

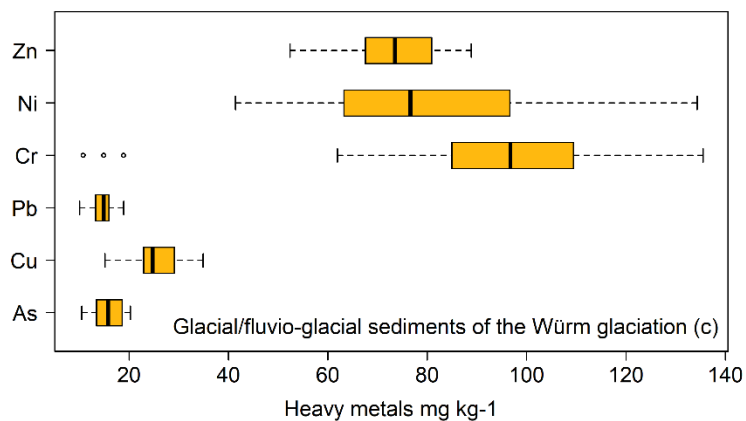
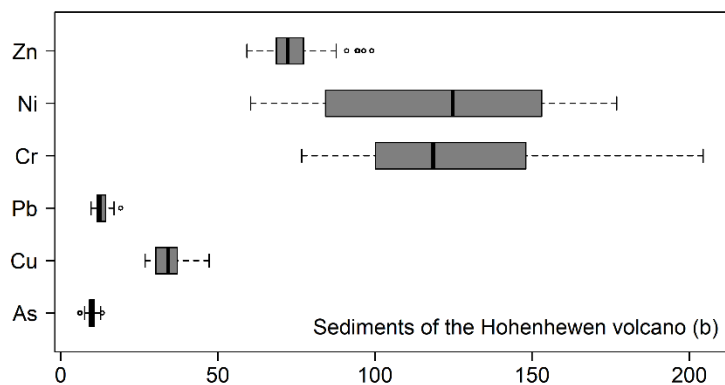
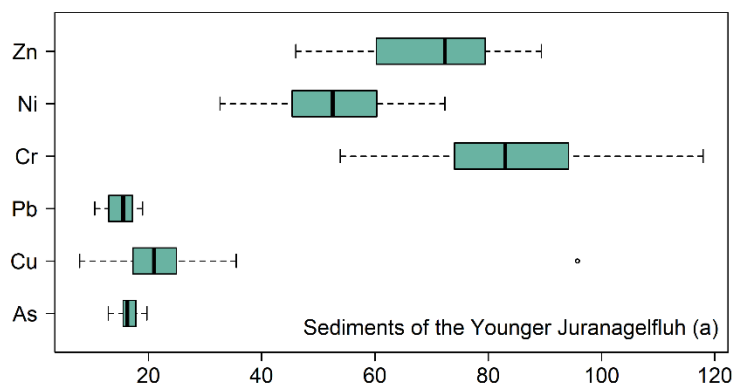
3.7 Animal bones

520 In total 415 animal bones from different MBA features (onsite) with a total weight of 1076 g were investigated at the ABR
 site (Tab. 3). In total, 21 % of the animal bones could be assigned to their species while 79 % had to stay unidentified due to
 their high level of fragmentation. Considering only those bones that were assigned to species, most of them belonged to
 sheep/goat (30 %; 95 g), cattle (30 %; 290 g) and pig (14 %; 47 g). Wild animal species (e.g. roe deer, deer, boar, wolf, wild
 cattle) made up 17 % (187 g) of the elements identified to species.

525 The taphonomic analysis revealed natural and human modifications of animal bones. Most of the assemblages were affected
 by insect damage or by root damage in different stages. The burning of bones could be identified with a low rate of 0.7 %, and
 occurred mainly in the fillings of pits and deposited vessels. Anthropogenic traces such as cutmarks were documented on only
 0.3 % of the animal bones. Another human modification was observed in a piece of antler (most likely red deer) from an MBA
 house, which had been worked into a point (tool or hunting object). Another specimen from an MBA fire pit showed slight
 530 polishing of one of the edges. Carnivore marks could only be identified on one specimen from the MBA sample.

Table 3: Absolute (n) and relative number (n-%) of animal bones, absolute (g) and relative weight (mass-%) of species-specific animal
 bones, which were assigned to their species.

| Species | n | n% | weight (g) | weight% |
|--------------------------------------|-----------|------------|-------------------|----------------|
| Cattle (<i>Bos primigenius</i>) | 30 | 34 | 290 | 27 |
| Horse (<i>Equus caballus</i>) | 1 | 1 | 33 | 3 |
| Pig (<i>Sus scrofa domesticus</i>) | 14 | 16 | 47 | 4 |
| Goat/sheep (<i>Capra/Ovis</i>) | 27 | 30 | 95 | 9 |
| Boar (<i>Sus scrofa</i>) | 5 | 6 | 50 | 5 |
| Wolf (<i>Canis lupus</i>) | 3 | 3 | 4 | 0 |
| Deer (<i>Capreolus capreolus</i>) | 1 | 1 | 0.8 | 0 |
| Roe deer (<i>Cervus elaphus</i>) | 5 | 6 | 12 | 1 |
| Wild cattle (<i>Bison bison</i>) | 3 | 3 | 120 | 11 |
| Total | 89 | 100 | 1076 | 100 |



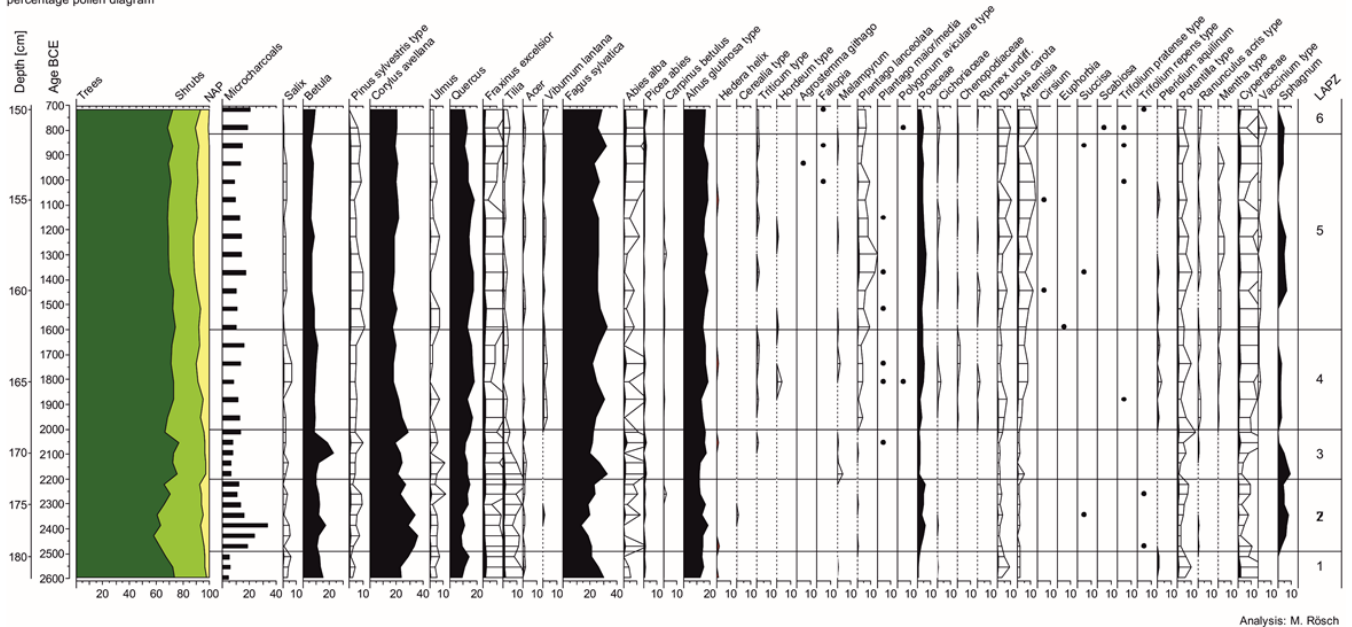
535 **Figure 12:** Heavy metal contents of the soil profiles ABR W1, ABR W2, ABR M, ABR S30, ABR SA1, ABR SA2 according to their soil substrates: (a) sediments of the Younger Juranagelfluh (n: 113), (b) sediments of Hohenhewen volcano (n: 93), (c) glacial/fluvio-glacial sediments of the Würm glaciation (n: 38). The boxplots show median, 25th (Q₁) to 75th (Q₃) percentile (=Interquartile range, IQR), data minimum (Q₁-1.5*IQR), data maximum (Q₃+1.5 IQR) and outliers.

3.8 Offsite pollen profiles

For the Grassee profile (Fig. 13), which consisted mainly of fen peat, six local pollen assemblages' zones (LPAZ) could be distinguished (according to Bastin 1979):

1. (2600-2500 BCE): NAP (non-arboreal pollen) low; *Fagus* and *Corylus* codominant, *Betula* subdominant; *Corylus* increasing, *Fagus* decreasing;
 2. (2500-2200 BCE): NAP increasing to >5%; *Corylus* predominant, slowly decreasing; *Fagus* subdominant, later codominant, increasing, micro-charcoal peak in the beginning of the zone;
 3. (2200-2000 BCE): NAP low; a sequence of *Fagus*, *Betula*, and finally *Corylus* peak;
 4. (2000-1600 BCE): NAP peak, *Fagus* predominant, *Corylus* and *Quercus* subdominant;
 5. (1600-850 BCE): NAP initially reduced, then with a maximum; *Fagus* predominant, *Corylus* and *Quercus* subdominant; *Quercus* decreases slightly from 1100 BCE onwards, a weak micro-charcoal peak;
 6. (850-700 BCE): NAP decreasing, *Fagus* increasing;
- Between 2000 and 800 BCE, the pollen curves of major anthropogenic indicators like *Artemisia* and *Plantago lanceolata* were continuous, with the highest values in the zone 5 (1600-850 BCE) exactly like the non-arboreal-pollen (NAP) sum. The curves of cereals (*Cerealia*-type, *Triticum*-type and *Hordeum*-type) were however discontinuous. Changes in the arboreal pollen (AP) composition are moderate. After 2000 BCE, *Betula* decreased slightly. *Quercus* reached its highest values in the LPAZ 4 and 5. The dominating tree during the whole period was *Fagus*, while coniferous trees like *Abies* and *Picea*, both minor components, increased in the 10th century BCE.

Grassee, Hegau Region, Southwest Germany
percentage pollen diagram



Analysis: M. Rösch

Figure 13: Pollen profile of Grassee mire. NAP: non-airborne pollen, the samples were investigated in increments of one cm.

For the Hartsee mire (Fig. 14), where peat and lake sediments alternate, seven LPAZ could be distinguished during the Bronze Age:

- 560 1. (2700-2600 BCE): NAP low; predominance of *Fagus*
2. (2600-2500 BCE): NAP still low; *Corylus* predominant, *Fagus* and *Quercus* subdominant; *Betula* has a weak maximum;
3. (2500-1900 BCE): Slight increase of the NAP sum; predominance of *Fagus*; subdominance of *Corylus* (decreasing) and *Quercus*, a pronounced microcharcoal peak;
- 565 4. (1900- 1750 BCE): NAP decrease, towards the upper limit increase; predominance of *Fagus*, subdominance of *Corylus* (prevailing) and *Quercus*; *Corylus* increasing, *Betula* decreasing;
5. (1750-1550 BCE): NAP increase to 10%, parallel to a micro-charcoal peak; *Fagus* dominates, but decreases; towards the upper limit codominance of *Quercus* and *Fagus*;
6. (1550-1050 BCE): NAP increasing to 15-20 % in line with high micro-charcoal increase and peak, codominance of
- 570 *Fagus*, *Quercus*, and *Corylus*; *Carpinus* curve \pm continuous;
7. (1050-700 BCE): NAP slightly decreasing; *Quercus* slightly predominant, *Fagus*, *Corylus* and *Betula* subdominant;

During the Bronze Age, the anthropogenic indicators *Plantago lanceolata* and *Artemisia* were continuously present. The cereal pollen (especially *Triticum*-type and *Hordeum*-type) showed almost continuous occurrence with their curves following the same trend as that of the NAP sum. After a minimum during the 18th/17th century BCE, *Betula* was increasing, with some

575 fluctuations, and gained a maximum of 15.5 % in the 12th century BCE. Another peak (20.4%) occurred in the late 11th century BCE. From 930 BCE onwards, the overall occurrence of *Betula* was continuous (11–15 %). After a maximum in the 18th century BCE, *Corylus* decreased continuously, apart from minor peaks. *Quercus* showed a peak in the 17th/16th century BCE and retained a strong significance afterwards. A more distinct increase was not observed as earlier as the pre-Roman Iron Age.

580 *Fagus*, the dominating tree at the beginning of the Bronze Age, decreased from the 17th century BCE onwards. After a recovery phase in the 13th/11th century BCE, it decreased again. The micro-charcoal record shows a first peak at ca. 2250 BCE and two more pronounced at ca. 1650-1600 BCE and 1150-1100 BCE.

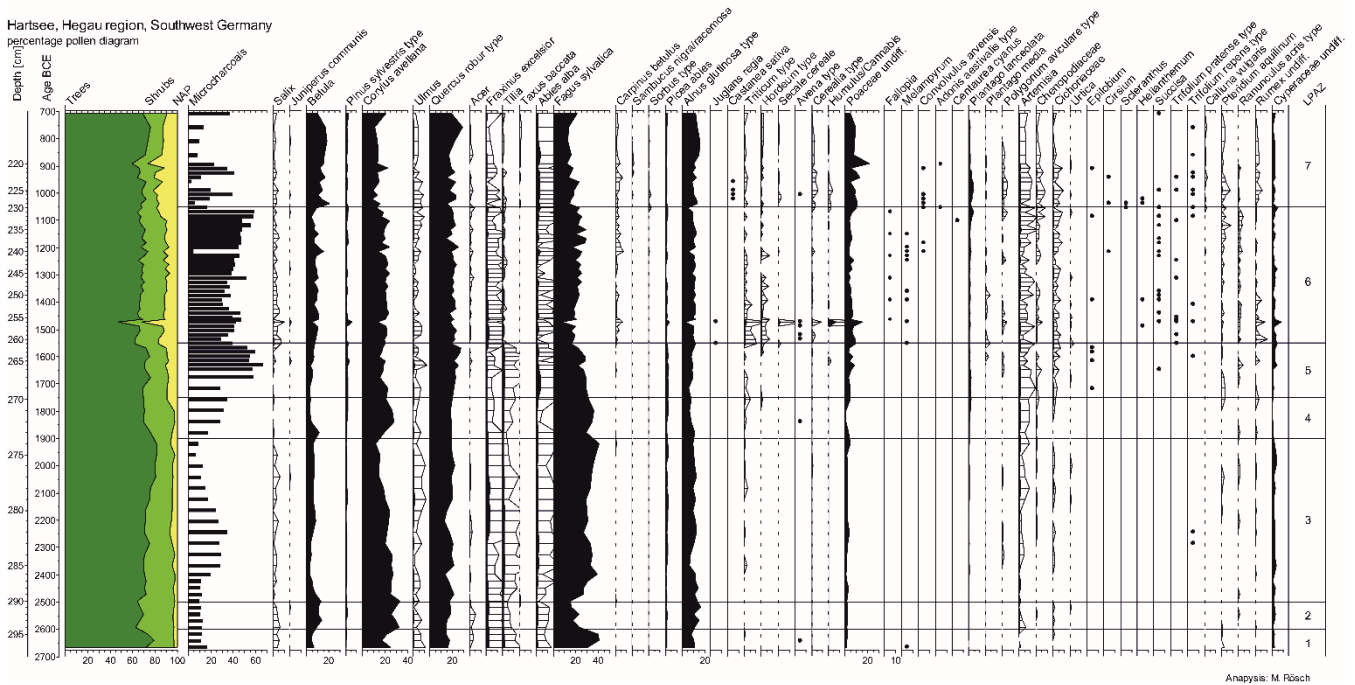


Figure 14: Pollen profile of Hartsee mire. NAP: non-airborne pollen, the samples were investigated in increments of one cm.

4 Discussion

585 4.1 Phases of colluvial deposition and land use

The stratigraphic and chronostratigraphic deciphering of colluvial deposits and buried topsoils based on ^{14}C and OSL dating is fundamental for the reconstruction of land use phases of nearby settlements (Kittel, 2015; Scherer et al., 2021). In the north-western Alpine foreland, phases of colluvial deposition during the MBA have been reported much less frequently (Schulte and Stumböck, 2000; Vogt, 2014), while related archaeological remains provide evidence of simultaneous human occupation

590 (Dieckmann, 1998; Ehrle et al., 2018; Wissert, 1985).

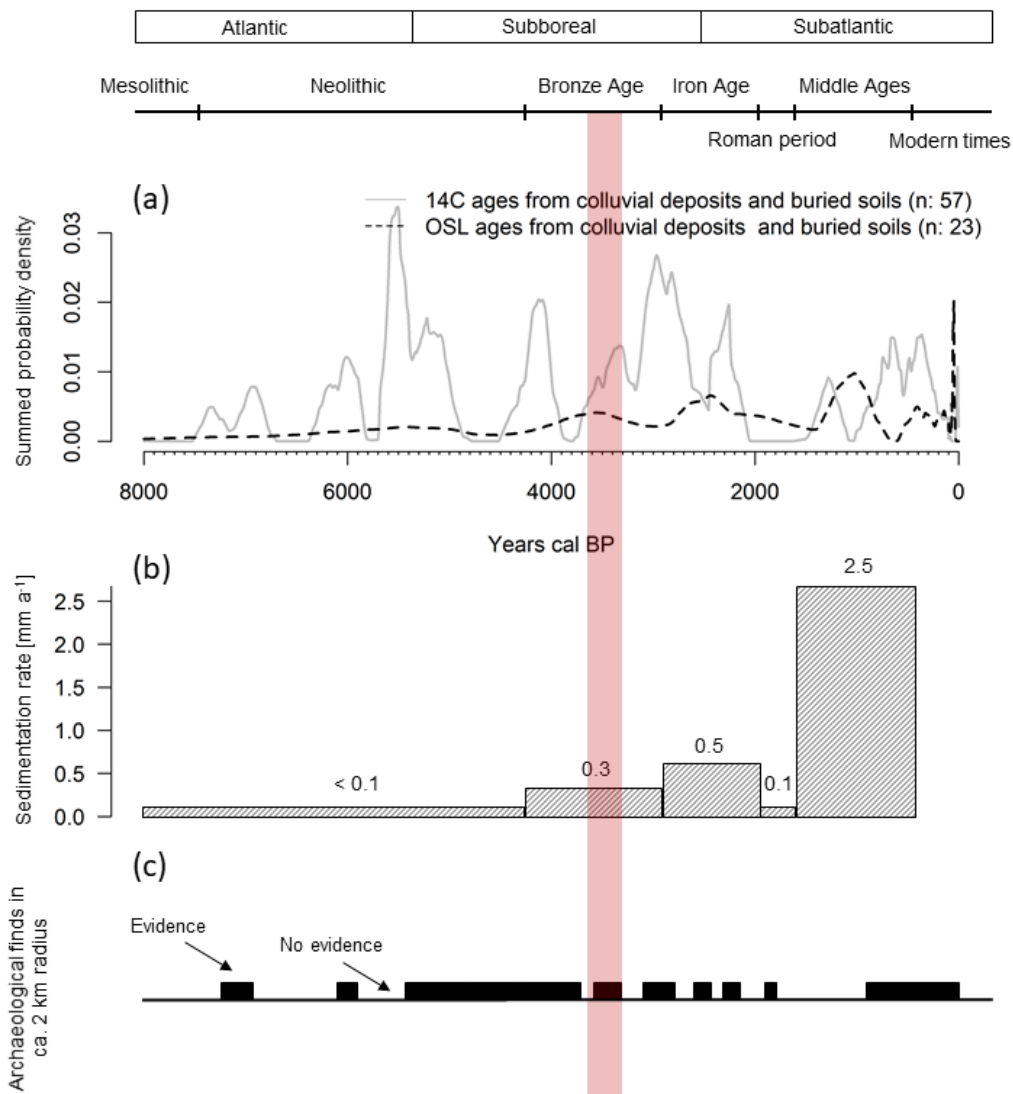
The summed probability density (SPD) of OSL ages (Fig. 15, a) indicate main phases of colluvial deposition during the Middle Bronze Age (MBA), the Iron Age, the Medieval period and modern times. During the Late Neolithic, weak colluviation is observed (M6 in ABR W2, 2700 ± 400 BCE; cf. Tab. S1), while soil tillage (e.g. hoe-farming) of the paleo-surface may have also been responsible for Younger Neolithic OSL signals (2Bwig/Ahb in ABR W1, 3300 ± 400 BCE; 2Bw in ABR SA2, 4400

595 ± 700 BCE; 2Bwg/Ahb in ABR M, 2500 ± 300 BCE). Neolithic soil deposition was also reported by Poręba et al. (2019) and Zádorová et al. (2013) in loess-covered upland sites in Poland and the Czech Republic, where the sedimentation rates were higher, which could be the result of a high erodibility of loess. At the ABR site, the main colluvial deposition began during the MBA, as indicated by the OSL ages from ABR W1 (M6, 1500 ± 300 BCE; M5, 1200 ± 200 BCE) and ABR W2 (GI529, M6, 1300 ± 300 BCE) and the formation of about 30 cm of colluvial deposit. These phases of colluvial deposition are in line

600 with MBA settlement remains but are restricted to the northern surrounding areas of the ABR site (ABR W1, ABR W2), while during the MBA no colluvial deposition occurred within the settlement area (ABR M) or south of it (ABR SA1, ABR SA2). However, the OSL signal from the 2Apb in profile ABR SA2 (1500 ± 300 BCE) indicates MBA soil tillage of the paleo-surface and the presence of an agricultural field associated with the MBA settlement. Pedofeatures indicating prehistoric ploughing are scarce (Twardy, 2011), while to our knowledge an MBA ploughing horizon is not yet documented (see sect. 605 4.2.2). Regarding the profile ABR M, colluvial deposition was not expected during the MBA due to its location within the settlement area. Since the Iron Age, colluvial deposition occurred across the ABR site as reflected in the higher sedimentation rate compared to the MBA (Fig. 15, b). This is in line with the sedimentation history from other study sites, and is mostly interpreted as the consequence of increased human impact (e.g. Dotterweich, 2008; Dreibrodt et al., 2010b; Henkner et al., 2017; Lang, 2003). However, the low sedimentation rate during the Roman period is remarkable and contradicts the 610 archaeological finds at the ABR site (Ehrle et al., 2018). Possible explanations are that Roman land use did not contribute to higher soil erosion rates, or Roman land use areas were located elsewhere at the ABR site. It should be noted that the SPDs could also be biased in this respect, as no charcoal was found and no OSL samples could be taken from the M5 horizon in ABR SA2, which according to the ages of the over- and underlying horizons M4 and M6, could be dated to the Roman period (Fig. 4).

615 Higher SPDs of ^{14}C ages often precede phases of colluvial deposition, indicating that landscape opening by local deforestation was responsible for colluvial deposition at the ABR site. During the Neolithic at least three phases of land use are reflected in the ^{14}C ages (Fig. 15, a). They can be related to the Early (Linear Pottery Culture, 5500-5000 BCE), Younger (Hornstaader Culture, 4100-3800 BCE) and Late Neolithic (Horgener Culture, 3700-2800 BCE), all of which are documented through burials or architectural remains from the ABR site or its close proximity (Ehrle et al., 2018; Hald, 2020, Fig. 14, c). During 620 the Bronze Age, the ^{14}C peaks of the SPDs complement the local archaeological record and the MBA depositional phase, indicating human occupation during the Early, Middle and Late Bronze Age (Ehrle et al., 2018; Hald, 2020). The succeeding ^{14}C peaks of the SPD curve correspond to the main phases of colluvial deposition during the Iron Age, Medieval Ages and modern times.

Based on the phases of colluvial deposition and land use, human occupation during the MBA is reflected in the sedimentary 625 archives at the ABR site. Considering the scarcity of MBA colluvial horizons in the north-western Alpine foreland, the well-dated colluvial horizons, the buried paleosurfaces and the archaeological features from the MBA provide promising archives for the archaeopedological, archaeobotanical and archaeological reconstruction of on- and near-site land use practices at the ABR site.



630 **Figure 15:** Summed probability density (SPD) curves from AMS-¹⁴C and OSL ages (a); sedimentation rate by depositional ages (OSL) and related to archaeological periods (b); Evidence of archaeological finds within a radius of 2 km from the Anselfingen settlement site (c). Red bar marks the Middle Bronze Age period.

4.2 Onsite- and near-site Middle Bronze Age land use practices at the Anselfingen site

4.2.1 Use of fire, deforestation, and forest management

635 Prehistoric deforestation and landscape maintenance could have been accompanied by fire practices (Rösch, 2013), which led to the accumulation of charcoal and PAHs in respective colluvial horizons (Tan et al., 2020). The PAH sum of the examined profiles was slightly related to SOC (R^2 : 0.30), indicating that SOM partially explains the PAH abundances, but other processes might have also contributed to their accumulation. In the north-western Alpine foreland, thermophilus deciduous vegetation

comprising the species *Quercus*, *Alnus*, *Fraxinus*, *Ulmus* and *Corylus* were naturally growing before the beginning of anthropogenic disturbances. Since the forests were assumed to be rather dense before human arrival, large-scale deforestation with the help of fire was likely afterwards (Lechterbeck, 2001). In the 2Bwg/2Ahb and 2CBg horizons (ABR M) PAH distribution points to natural vegetation fires during the early Holocene with *Pinus*, *Betula* and *Poaceae* as the natural vegetation and possible fuel source. The higher concentrations of phenanthrene in greater soil depths, compared to all other PAHs, indicates contribution not only of *in-situ* combustion residue inputs but also of atmospherically transported fire condensates (Lehndorff and Schwark, 2004; Kappenberg et al., 2019). This is also indicated by the phenanthrene to phenanthrene plus the sum of methylated phenanthrenes ratio (Phe/Phe+ΣMP), which suggests a predominance of complete combustion processes with lower concentrations of methylated phenanthrenes and an excess of fire condensates. In the horizons related to the MBA (2Bwg/Ahb in ABR M; M6 in 2Bwig/Ahb in ABR W1; 2Apb in ABR SA2) we found indications for relatively low combustion temperatures as might have been the case for controlled burning of biomass to maintain land use areas. This is supported by the fluoranthene to fluoranthene plus pyrene ratio (Fl/Fl+Py) with values mostly > 0.5, indicating that the combustion of grass, wood and charcoal (Budzinski et al., 1997; Yunker et al., 2002) was predominant at the ABR site. Moreover, we would expect different combustion processes within the settlement area compared to its surroundings as indicated by several MBA fire places, fire pits and the secondary deposition of heat stones. Indeed, the suites of PAHs were more complete at the ABR M profile (onsite), which is located within the MBA settlement area, compared to the profiles ABR W1 and ABR SA2 (near-site). There, various combustion processes, such as cooking practices, heating of houses, and technical application (e.g. metal processing and burning of ceramics), and different fire temperatures may have contributed to the PAH pattern.

In relation to MBA fire-use practices, the determination of onsite and near-site charcoal assemblages provide information on natural and human-modified vegetation patterns and thus, on past land use practices such as deforestation, wood procurement, promotion of individual tree species and forest ecosystems (Jansen and Nelle, 2014; Schroedter et al., 2013). Moreover, different fuel sources can be estimated from the investigation of charcoal assemblages from fireplaces and fire pits (Höpfer et al., accepted). The generally very small size of charcoal fragments in the M horizons may be the consequence of erosional transport, while longer-distance aerial transport can be neglected due to fragment sizes > 1 mm (Whitlock and Larsen, 2002). Hence, an anthracological determination further than dicotyledons was not always achievable. However, the higher abundance of *Quercus* compared to *Fagus* in the buried soils and colluvial horizons related to the MBA (2Bwig/Ahb, M6 in ABR W2; 2Bw, M7 in ABR SA1) indicates a shift from thermophilous calciphilous forests consisting of sessile oak and beech, to a forest ecosystem dominated by oak. These findings are supported by charcoal assemblages from MBA fire pits at the settlement site of Anselfingen (Höpfer et al., accepted). The MBA fire pits contained about 85 % *Quercus* charcoal, while 98 % of the total charcoal spectra consisted of *Quercus* and *Fagus* (Rösch, 1996). Whether *Quercus* and *Fagus* were collected intentionally or unintentionally during the MBA cannot be conclusively assessed. However, the very good fuel quality of both taxa along with the occasionally observed insect holes within the charcoal fragments and the smaller branch diameters, strongly indicate an opportunistic collection of deadwoods following the “principle of least effort” (Höpfer et al., accepted). Naturally, oak mixed

forests develop into beech forests, since oak is more light demanding, and therefore restricted to drier or alluvial sites and beeches are faster growing, even in shady areas (Mosandl and Abt, 2016). The potential occurrence of *Quercus* was probably limited to alluvial areas or drier sites close to the ABR site. Therefore, a human-induced promotion, for different purposes, of *Quercus* appears likely during the MBA, which is also suggested by the off-site palynological record from the pollen archives of Hartsee and Grasse (see sect. 4.3), where more or less pronounced microcharcoal peaks occur from ca. 1750-1600 BCE onwards. At Hartsee, the increase of *Quercus* and decrease of *Fagus* are accompanied by relative high values of micro-charcoal and several palynological indicators for human impact on the vegetation in the time span between ca. 1650 – 1150 BCE. The fern *Pteridium aquilinum*, typical in pasture and marginal areas, which is favoured by fire activities also shows a continuous curve for the same period. In Grasse those tendencies are less pronounced, therefore the two charcoal peaks at 1650 BCE and 1400 BCE are more difficult to interpret, but also seem related to subsequent increases in oak and anthropogenic indicators. Particularly since the Final Neolithic, forest pastures in anthropogenically modified forest ecosystems were likely; these pastures likely resulted from the combined effects of wood procurement (construction, burning) and maintenance of areas for livestock husbandry (Rösch, 2013). Considering the weaker evidence for Neolithic settlements at the ABR site, such land use practices seem to have commenced at the beginning of the Bronze Age, especially considering the archaeological record of the MBA. Similar observations were made for pollen profiles from Lake Biber (close to an MBA settlement in Switzerland), where increased abundances of *Quercus* pollen were interpreted as the result of human promotion of oak species to maintain areas for livestock husbandry (e.g. acorn for pigs) as well as for timber and firewood procurement (Achour-Uster et al., 2001; Knaap and Leeuwen, 2001). The higher diversity of taxa in the upper part of ABR SA1 and ABR SA2 with increasing amounts of conifers and *Fagus*, indicates human impact until the modern period (Vrška et al., 2009). During the MBA, the use of fire at the ABR site for landscape opening, maintenance and domestic purposes, associated with the combustion of grass as well as wood and charcoals is indicated by the PAH patterns in the corresponding colluvial horizons and by the local archaeological record. The forest ecosystems were anthropogenically modified and *Quercus* was promoted, which can be linked to land use practices, such as forest pastures (see sect. 4.2.3) and wood procurement. The offsite pollen data support the occurrence of oak dominated forest ecosystems on a regional scale (see sect. 4.3).

4.2.2 Arable farming

Past land use practices in the context of arable farming can be interpreted from different proxies preserved in archaeological remains, colluvial deposits and buried topsoils. These proxies provide information on the presence and spatial distribution of potential arable land (open landscapes), the occurrence of different crop species and related archaeological and pedological structures such as storage facilities and plough marks (e.g. Gnepf-Horisberger and Hämmerle, 2001; Pietsch and Machado, 2014; Rösch et al., 2014a).

With this, phytoliths from buried soils and colluvial deposits are frequently used to decipher past arable farming (e.g. Meister et al., 2017; Weisskopf et al., 2014). At the ABR site, the high proportion of weathered phytoliths together with the absence of multicellular phytoliths are an indication of the poor preservation of the assemblages, likely due to a variety of depositional

and post-depositional processes (Cabanès et al., 2009; Madella and Lancelotti, 2012). However, some general trends can be noted in the phytolith assemblages: Monocotyledonous plants produce more phytoliths than dicotyledons in most cases (Piperno 2006), but the relatively higher abundance of monocotyledonous morphotypes in combination with the other proxies is likely the result of an open landscape in the area immediately surrounding of the ABR site. It is interesting to note that the lowest phytolith concentrations were found in the modern topsoils (Ap) and the highest concentrations in the buried horizons, as the phytolith concentrations usually decrease with soil depth (Meister et al. 2017). The phytolith assemblages from all samples were predominantly composed of phytoliths originating in the leaves and stems of monocotyledonous plants, which includes many of the regionally important crop species. As the result of harvesting activities, the inflorescences of these plants were likely removed from the agricultural field leading to a lower abundance of inflorescence phytoliths in these samples (Dietrich et al. 2019). Particularly in the buried plough horizons (2Apb) of the ABR SA2 profile, a relatively high concentrations of phytoliths with a simultaneous low abundances of inflorescence compartments indicate an arable field south of the MBA settlement that may have been quickly buried, thus leading to better phytolith preservation and higher concentrations in these horizons (Cabanès et al., 2009). Micromorphology also confirmed a buried plough horizon (2Apb) in profile ABR SA2. So far, MBA plow marks and soil-structural features indicating tillage have not been published for the north-western Alpine foreland at inland sites. Therefore, the micromorphological analysis of thin section from a buried plough horizon offers an unique opportunity of identifying prehistoric tillage practices. Evidence of arable farming derived from phytolith analysis is further supported by micromorphological analysis of two thin sections at the 2Apb horizon (ABR SA2), which indicates the use of ards that were widely spread since the Late Neolithic (see Tegtmeier, 1987). Very dusty clay coatings with embedded coarse material (clay-silt-sand coatings) can be related to soil cultivation (Macphail et al., 1990, Usai, 2001), while the occurrence of compacted large (sub)rounded peds may indicate ploughing with an ard (cf., Fig. 6 in Gebhardt 1999). The occurrence of a nearly rectangular area with inclined bands of alternating coarse and fine material can be caused by the disturbance of ards or ploughs as described by Lewis (2012); with this, the material is relocated in clods and inclined around 45° to one side. All found relocation features such as inclined bands, large partially rounded peds and the very dusty clay-sand coatings indicate mixing and slaking and can be interpreted as a result of cultivation (Macphail 1990). In addition, the frequently occurring charcoal fragments, coprolites and phytoliths can be related to cultivation. Based on the phytolith and micromorphological data, the agricultural activity at the ABR site is verified; however, the question of which staple crops were used by MBA farmers in the Hegau remains open.

This gap can be filled by the onsite archaeobotanical remains at the ABR site. These remains hold special value, as on- and near-site evidence on MBA crop production in the north-western Alpine foreland is still scarce (Rösch et al., 2014a,b; Rösch et al., 2015). The cereals typical for the Early and Middle Bronze Age like *Hordeum distichon/vulgare*, *Triticum dicoccum*, *Triticum monococcum*, *Triticum aestivum/turgidum*, *Triticum spelta* also occur at the ABR site. A similar spectrum of cereals was found in fire pits at the MBA settlement in Cham-Oberwil (Switzerland) (Gnepf-Horisberger and Hämmerle, 2001), however these fire pits also contained pulses (e.g. broad bean), which were missing at the ABR site. From the observed cereal crop diversity, a sophisticated cropping system, with utilized different soil types, different sowing and harvesting times and a

740 variety of food processing techniques can be assumed. In the study area, emmer is grown in modern times preferentially during
the summer periods, while spelt, which is resistant to low temperatures, is typically sown in winter. Einkorn and barley are
known to be viable as both summer and winter crops. Einkorn, emmer and spelt can easily be stored, all of them require further
time-consuming processing (e.g. husking) before consumption in contrast to free-threshing wheat, which however is more
745 year, which leads to a potentially larger territory being available for crop growing and improves food security. However, the
cultivation of various cereal crops requires knowledge and capacities for post-harvest processing of the cereal crops (e.g.
drying, roasting, husking) and storing, which are both indicated by the archaeological record. The secondary deposition of heat
stones at the ABR site can also be related to MBA food processing. Even though the function of the heat stones is widely
discussed, with interpretations including technical applications such as stone breweries and metal processing (Beigel, 2019;
750 Honeck, 2009), they are most commonly considered to be cooking pits for the roasting of cereals and other agrarian products
(Lindemann, 2008). Furthermore, post-holes from ten very small constructions with square or short-rectangular shapes at the
ABR site are most likely remnants from storage buildings. There is a broad consensus that such constructions are related to
arable farming and represent stilted pantries for the storage of food, especially of cereals (Gnepf-Horisberger and Hämmerle,
2001). In general, stilted pantries are frequently observed from MBA sites in the north-western Alpine foreland, whereas
755 similar structures are significantly in excavations from neighboring regions, such as Bavaria (Höpfer et al., accepted).
Statements on the importance of individual cereal species cannot yet be made, since the number of records is still too low and
the hulled wheat species with their very robust glumes are often overrepresented in archaeobotanical records. Leguminous
(lens, broad bean and pea) as well as oil and fiber (flax and poppy) crops were also important elements of the Early and Middle
Bronze Age agricultural economy of the Alpine foreland (Stika and Heiss 2013), but they are rarely preserved in charred form
760 and are therefore mostly underrepresented at sites with aerobic soil conditions (Rösch et al., 2014a; Rösch et al., 2015). During
the Middle Bronze Age sporadic finds of millet are also known from the study area but did not occur in the record of botanical
macro remains of the ABR site. However, the fact that all those crops are missing from the archaeobotanical assemblages of
the ABR site cannot be interpreted as their definitive absence in the region's MBA economy. Nevertheless, the occurrence of
open landscapes and an MBA arable field, which was cultivated for cereal crop production, are verified, and are also supported
765 by the identification of the common MBA crop species. Furthermore, post-harvest processing and storage facilities for cereal
crops appeared to be an integral part of the MBA agriculture.

4.2.3 Livestock husbandry

The reconstruction of livestock husbandry from sedimentary archives is commonly achieved through the analysis of urease
activity or faecal biomarker resulting from past exposure to urea or animal faeces (e.g. Chernysheva et al., 2015; Prost et al.,
770 2017). Both proxies are a suitable marker for the past as they are resistant against weathering (urease-organo-mineral
complexes and aromatic molecule structure) and rather immobile in the soil environment and therefore persist in soils over
millennia (Bull et al., 1999; Burns et al., 2013; Skujiņš and McLaren, 1968). The comparison of these proxies with the

zooarchaeological record of animal bones derived from archaeological features could provide detailed information about past livestock farming practices.

775 Eutrophication always leads to an input of urea into the soil, and urea may originate from past and recent animal faeces or
from the degradation of nucleic acids as part of the soil necromass. However, in greater soil depths, lower levels of currently
active microorganisms and urease enzyme activity are expected. Therefore, a higher urease to microbial biomass C quotient
in greater soil depths indicates formerly eutrophicated areas that could be associated with areas of livestock husbandry, such
as pastures or livestock shelters. In contrast to other studies, increased levels of urease enzyme activities in soils of the ABR
780 site cannot be solely explained by a relationship to SOC or clay (Roscoe et al., 2000; Taylor et al., 2002). Particularly below
 130 ± 20 cm, other factors must have been responsible for increased urease activities. The past anthropogenic input of urea in
relation to livestock husbandry or manuring has been shown in several archaeological studies (e.g. Borisov and Peters, 2017;
Chernysheva et al., 2015). Hence, elevated urease/ C_{mic} ratios in soil horizons, associated with the MBA land surface or
concurrent colluvial horizons, can be interpreted as an anthropogenic input of urea due to land use activities at the ABR site.
785 However, no spatial differences in urease/ C_{mic} ratios could be observed that would indicate a separation of different land use
practices and intensities. Only the lower part of the 2Bw horizon in profile ABR SA1 had considerably higher values of
urease/ C_{mic} ratio, suggesting formerly eutrophicated areas and high urease levels in the past. Although the OSL age from the
2Bw horizon showed a last bleaching of mineral grains during the Roman period (300 ± 200 CE), soil tillage prior to the
Roman period is likely for two reasons: First at ABR SA1, the first phase of sedimentation is dated to the Early Medieval
790 period (800 ± 100 CE, M7), which means the *in-situ* land surface could have been used during the MBA. Second, ABR SA1
is located less than 40 m north of ABR SA2, which has a buried plough horizon (2Apb) that is dated to the MBA and indicates
related land use activities. At the ABR site, the increased urease/ C_{mic} ratios in MBA soil horizons indicate past input of urea
into the soils, which could be associated with land use practices such as livestock husbandry (on fallow land and in forests)
and the application of manure to arable fields. However, there is weak evidence of intentional manure application during MBA,
795 and agricultural practices such as livestock farming on long-standing fallow land have more likely contributed to increased
urea concentrations (Tserendorj et al., accepted). Whether urea originated from omnivorous or herbivorous livestock cannot
be assessed by the analysis of urease enzyme activity.

The analysis of faecal biomarker enables a differentiation between herbivorous and omnivorous animal faeces, which enter
the soil via the faeces of past livestock. In previous studies steroid analyses helped to identify organic manuring in Neolithic
800 soil relicts (Lauer et al., 2014) and in soils surrounding a Roman settlement (Simpson et al., 1999). Hence, the steroid
composition of human-influenced soil horizons (buried topsoils, colluvial horizons) should be different from the adjacent
subsoils, if such land use was practiced. In the northern surrounding area of the ABR site (ABR W1), 5β -stanols (e.g.
coprostanol, epicoprostanol) were enriched in the M6 horizon and support the interpretation of the MBA deposition of faeces,
as indicated by higher levels of past urease enzyme activities. These 5β -stanols originate mainly from the microbial reduction
805 of Δ^5 -sterols during omnivorous digestion processes and are related to pig or human faeces in the context of past land use (Birk
et al., 2011). The higher levels of 5β -stanols are further supported by the coprostanol/(coprostanol+epi- 5β -stigmastanol)*100

ratio, which was introduced by Leeming et al. (1997) to differentiate between herbivorous and omnivorous faeces. In profile ABR W1, the ratio clearly indicates an input of steroids from omnivorous digestion processes (> 73 %). With increasing soil depth, cholestanone and cholesterol were most abundant at both profiles. Cholesterol is the dominating Δ^5 -sterol occurring in nearly all eukaryotic cells (Mouritsen and Zuckermann, 2004), while cholestanone is produced by microbial transformation from its sterol precursors. We interpret the higher abundance of source-unspecific sterols and lipids formed during microbial metabolization as the given background composition of steroids of the soil environment with low human influence. In profile ABR SA1, 5β -stanols were not as dominant as in profile ABR W1, indicating a reduced input of omnivorous faeces. Nevertheless, faecal input by wildlife species, organic manuring and/or occasional pasture on fallow land could have contributed to the occurrence of 5β -stanols. The latter may have also contributed to increased levels of epi- 5β -stigmastanol, which mainly originates from herbivorous digestion processes (Derrien et al., 2011). This is in line with the coprostanol/(coprostanol+epi- 5β -stigmastanol)*100 ratio, pointing to mainly faecal input by herbivores (< 38 %) at the ABR SA1 profile. There, phytosterols, such as β -sitosterol and stigmastanol, were also more abundant. In the buried subsoil of ABR SA1 (2Bw), source-unspecific steroids, e.g. cholestanone, were dominating the steroidal assemblage, indicating lower anthropogenic influence. The faecal biomarkers show past input of animal faeces in the area surrounding the MBA settlement, which can be associated with the occurrence of omnivorous and herbivorous livestock. North of the settlement site, we identified a dominance of 5β -stanols, which, together with the results from the charcoal determination, suggests a forest ecosystem dominated by oaks, where mainly pig farming was practiced (see sect. 4.2.1). Higher levels of plant lipids and herbivorous biomarker in the area south of the settlement site supports the presence of arable fields, which could have also been subject to an input of animal faeces during fallow practices or intentional manuring.

Information on different animal species, which were part of the farming practices at the ABR site, can be provided by the determination of animal bones, which were deposited at the MBA settlement. With 79 % of unidentified animal bones from various archaeological pit fillings, the degree of fragmentation is high, which is further indicated by post-depositional bone damage from insects and roots. Acidic weathering of animal bones can be mostly ruled out at the ABR site since the soil milieu is neutral. Hochuli et al. (2001) reported a similar degree of fragmentation of animal bones at an MBA settlement in Switzerland. The taxonomic determination of animal bones, with four to five domestic and five wild species at the ABR site, supports the results of the urease enzymatic activity and faecal biomarker investigations insofar as domestication and livestock husbandry were important at the ABR site during the MBA. The dominance of sheep/goat, pig and cattle species are also observed at MBA settlements sites in southwest Germany (Kokabi, 1990; Köninger, 2006; Stephan, 2016). Nevertheless, the wide range of wildlife species and their share in the total number and weight illustrate that hunting was still important during the MBA. The high percentage of sheep/goat and cattle bones partially contradicts the low evidence of herbivorous faeces by steroid analysis. It is likely that the colluvial profiles were not always congruent with MBA grazing areas. Areas within the MBA settlement and in the east, where the Hepbach river might have formed floodplain forests, could have been suitable for grazing. However, the subdominant abundance of pig bone is consistent with higher concentrations of 5β -stanols especially in the north of the ABR site (ABR W1). In combination the results from the charcoal and animal bone determination, urease

enzyme activity and faecal biomarker are complementary and suggest a diverse landscape management model with a spatial distribution of livestock practices. North of the MBA settlement, the occurrence of oak dominated forest ecosystems and the high concentrations of 5 β -stanols are in line with a considerable amount of pig bone from MBA pit fillings and indicate a forest pasture mainly for pig farming and wood procurement. In the south of the ABR site, the higher concentrations of phytoliths with minor amounts of grass phytoliths derived from the floral parts, as well as the occurrence of an MBA plough horizon and the increased input of herbivorous faeces indicate an open landscape for crop cultivation (arable fields) and livestock husbandry on fallow land and/or manuring with animal faeces.

4.2.4 Metal processing

The distribution of heavy metals in soils is influenced by the substrate, pH-value, content of lime and SOC, sedimentation processes and past and modern anthropogenic impact (Young, 2013). These factors must be considered when assessing the natural and anthropogenic accumulations of heavy metals (Henkner et al., 2018b). Cu and Zn are major elements of bronze that gained importance during the Metal Ages but had to be traded over long distances due to their limited natural occurrences in the area (Jennings, 2017; Knopf, 2017). Cr and Ni, as secondary components, can also be associated with the production of bronze. Pb has been used metallurgically since the Roman period, while Cd and As are tracers for more recent land use (around 1900 CE) (Smolders and Mertens, 2013; Völkel, 2003).

The percolation of heavy metals through the soil can be neglected in all profiles of the ABR site since the pH is always > 7. The variations in CaCO₃ mostly explain the heavy metals patterns for the sediments of the Younger Juranagelfuh and Würm glaciation, but not for the basaltic sediments of the Hohenhewen volcano. The natural variation of heavy metals, as indicated by the range between the 25th and 75th quartile \pm 1.5 Interquartile range, is supported by the analysis of geological background values by the geological state office of Baden-Württemberg (LGRB, 2020). However, a few positive outliers were identified for the different soil substrates. At ABR WA2 and ABR S30, the outliers cannot be further assessed for prehistoric human-land interactions due to lacking age determinations, while the maximum tin values at ABR SA1 are detected at the colluvial horizon M7, dated to the Roman period. Based on heavy metal contents, which are mostly in the range of natural variation, and their correlation with CaCO₃, an intensive MBA metal processing, which also affects the adjacent sediments, cannot be deduced at the ABR site. The deposited copper ingot, most likely from the Eastern Alps (Lutz and Pernicka, 2013), however, indicates that metals were traded over long distances and that the processing and maintaining of tools may have been carried out at the ABR site, but with no detectable effect of heavy metals in the investigated buried and colluvial horizons.

4.3 Offsite vegetation signals in relation to land use practices at the ABR site

The two new pollen profiles (Fig. 13 and 14) show close similarities regarding the Bronze Age (2200-800 BCE) human-land interactions in the Hegau. At Grassee and Hartsee, human impact is very weak between 2000 and 1800 BCE. At Grassee, a short period of human impact on the vegetation can be noticed in the 18th century BCE, which subsequently decreases between 1600-1500 BCE. At Hartsee, human influence was high between the 17th and 15th century BCE without any intermediate

decrease. Both profiles show a very strong human influence between 1500-1400 BCE, which after that slightly decreases. At Hartsee, human influence is clearly pronounced between 1000 and 800 BCE, whereas this influence is absent in the Grassee pollen profile.

The NAP percentages at Grassee and Hartsee, which are a robust indication of human-land interaction, are analogous to other profiles near Lake Constance (Rösch et al., accepted). Especially during the MBA, anthropogenic deforestation appears to be rather similar in the Hegau. In Oberschwaben, the Allgäu (southern Germany) and in the Black Forest (south-west Germany) deforestation is generally weaker, while at Lake Aalkisten in the Kraichgau (south-west Germany) a pronounced deforestation is observed in the EBA and LBA (Rösch et al., accepted).

The comparison of the pollen archives of Grassee and Hartsee with the local records of the ABR site helps to assess the supraregional character of onsite and near-site land use and vegetation changes at MBA settlements in the north-western Alpine foreland. In both profiles, the percentage of NAP increases from the EBA to the MBA with a distinct peak between 1500 and 1400 BCE. This peak is accompanied by low percentages of *Betula*, *Corylus* and *Fagus*, suggesting that human-land interactions gradually shifted from the lakeshores of Lake Constance (EBA) to areas further inland (MBA). This cannot be interpreted as an abrupt shift in the land use pattern, but rather a refined form of agropastoralism, which had its roots in the EBA and continued throughout the MBA in the Hegau. This is also supported by the offsite pollen record with several micro-charcoal peaks, which indicate palaeo-fire activities shaping the land cover since 2450 BCE, as well as the high concentrations of phytoliths in MBA soil horizons as the result of advanced landscape opening related to local agricultural practices. The pollen curves of *Quercus* and *Fagus* clearly alternate corresponding to increasing and decreasing human occupation. Considering the different input pathways of charred archaeobotanical remains, pollen and charcoal, with respect to their catchment area, the pollen spectrum comprises the regional vegetation record of human occupation and adjacent successional phases. Even the use of cereals is distinct from onsite archaeobotanical data, 'closed' forested landscapes may have hindered the distribution of the offsite pollen of cultivated cereals by the filtering effect. Due to their size (ca. 40-55 µm), the spread of the Cerealia-type pollen is hindered if they are not in the immediate surrounding of the depositional environment. Moreover, the pollination of several cereal crops (*Triticum*, *Hordeum*) is cleistogamic - this means the flower is closed - which also contributes to a limited pollen spread if no threshing or further crop processing took place near the peat bog. The anthracological data indicate local vegetation and deforestation patterns (colluvial deposits) and human decision-making (fuel procurement). The human impact on vegetation, as recorded in those palaeoecological archives, seems to clearly promote the increase of *Quercus* in the MBA landscape of Hegau. This is in line with the charcoal record of MBA colluvial deposits and fireplaces at the ABR site, which exhibited a strong dominance of *Quercus*. In the pollen diagram of Hartsee the *Fagus* usually decreases after the occurrence of microcharcoal peaks and is then followed by an increase in *Quercus* and pollen indicators of agriculture (*Triticum*-type) and pasture (*Plantago lanceolata*). Forest pastures for pig farming are indicated at the ABR site, when considering the high occurrence of *Quercus* in the colluvial deposits and MBA fireplaces as well as the identification of 5β-stanol and pig bone (see sect.s 4.2.1, 4.2.3). Agricultural indicators are present in both the onsite and near-site colluvial and archaeological archives at the ABR site and in the offsite pollen records. These indicators, as well as indicators from another

MBA settlement close to the Hartsee profile (Hald, 2016), clearly underline the regional character of the identified land use practices during the MBA.

5 Conclusion

910 The multi-proxy analysis of archaeological features (onsite), colluvial deposits, buried topsoils (near-site), and peat bogs (offsite) of the Middle Bronze Age in the Hegau (SW Germany) shows how helpful such multi-proxy approaches can be for a refined understanding of past human-land interactions. (i) From the archaeopedological reconstruction of phases of colluvial deposition and onsite and near-site land use practices, we can infer sophisticated land use practices at the Middle Bronze Age settlement site in Anselfingen, which undoubtedly marked the beginning of major colluvial deposition. The land use practices promoted *Quercus* at the expense of *Fagus*, the arable farming relied on cultivation of five cereal crops and involved ploughing
915 Livestock husbandry was based on pasture on fallow land and forest pasture for pig farming, while hunting was also part of the MBA economy. (ii) The spatial patterns of the onsite and near-site land use practices revealed that a forest management (incl. pig farming) mostly occurred in the surrounding area north of the ABR settlement site, while arable farming was practiced in the south. Based on the differentiation of combustion processes between the settlement and the close by land use areas, we
920 conclude a wide range of fire application such as domestic fires for cooking, technical applications and ritual practices as well as fires to open and maintain the land use areas, that differed on the spatial scale. (iii) From the comparison of onsite and near-site vegetation patterns from colluvial deposits and archaeological remains and the offsite vegetation signals from two pollen profiles, we conclude similar patterns of human-induced vegetation change, which characterized the anthropogenic impact in the Hegau on a local and regional scale. The pollen records show that during the Early and Middle Bronze Age fire played a
925 role in shaping the landscape and that also on regional scale anthropogenic activities favoured *Quercus* dominated forest ecosystems.

In summary, the interdisciplinary approach between soil science, archaeology, archaeobotany and archaeozoology allowed in-depth insights into the Middle Bronze Age subsistence economy in the Hegau. From the similar patterns of human-induced vegetation change and land use on a local and regional scale, one can infer a characteristic appearance of landscapes in the
930 north-western Alpine foreland during the Middle Bronze Age. The study also supports the assumption that the Middle Bronze Age in the north-western Alpine foreland was a period of mainly spatial changes at a regional scale with a shift of settlements from the lakeshore to sites further inland, which was accompanied by corresponding landscape transformations.

Authors Contribution

PK, TK and TS acquired the funding to carry out the study. SaS, BH, TK, TS and PK conceptualized the research experiment
935 and the hypothesis. SaS carried out the soil scientific field work and sampling, and most of the data collection, including the analysis of urease activity, microbial biomass carbon and faecal biomarker. JL and MF performed the OSL dating, BH

contributed with data of the local archaeological record, JM and KW analyzed the phytolith assemblages, KD performed the anthracological determination of charcoals, EF investigated the charred archaeobotanical remains, HR analyzed the polycyclic aromatic hydrocarbons, JZ performed the zooarchaeological investigations, MR, JL and EM contributed with the pollen analysis. SaS and PK prepared the manuscript and all authors contributed to the interpretation of the results, to the discussion and the manuscript in general.

Competing interests

The authors declare that they have no conflict of interest.

Data availability

945 All data used in the analysis of colluvial deposits and the tables and figures are available at <https://datadryad.org/stash/share/hVuLgYtHXROjtUDhBg9BRgVQ3H4pfL1INAXwzjTnT5E>

Acknowledgements

This study is part of the Collaborative Research Center 1070 ResourceCultures (SFB 1070) at the Eberhard Karls University Tübingen financed by the German Research Foundation (DFG).

950 We are grateful to many technical assistants and student helpers from the University of Tübingen and Bayreuth who supported the field and laboratory work, namely Rita Mögenburg, Karin Söllner, Andrey Rodionov, Simon Degler, Astrid Paul and Daniel Greulich. We thank Thomas van den Berg (Chromtech GmbH, Bad Camberg, Germany) for his technical support in maintaining the GC-MS/MS system. We also thank Marco Nicoli from the SFB 1070 for the archaeobotanical determination of an additional 30 charred grains. We are especially grateful to Dr. Jürgen Hald and Björn Schleicher from the Archaeological Service of the District of Constance for their tremendous support in the field. We want to thank Siah Beattie for her help on editing the manuscript and improving the reading flow.

References

- Achour-Uster, C., Kunz, J., and Brombacher, C.: Die mittelbronzezeitliche Siedlungsstelle von Birmensdorf-Stoffel: Grabungen 1995-1996, *Zürcher Archäologie*, 1-87, 2001.
- 960 Ad-hoc-AG Boden: Bodenkundliche Kartieranleitung (KA 5) der Staatlichen Geologischen Dienste und der Bundesanstalt für Geowissenschaften und Rohstoffe, mit 103 Tabellen und 31 Listen, Schweizerbart, 2005.

- Albert, R.M., Lavi, O., Estroff, L., Weiner, S., Tsatskin, A., Ronen, A., and Lev-Yadun, S.: Mode of occupation of Tabun Cave, Mt Carmel, Israel during the Mousterian Period: a study of the sediments and phytoliths. *J. Archaeol. Sci.*, 26, 1249–1260. <https://doi.org/10.1006/jasc.1999.0355>, 1999.
- 965 Albert, R.M.: Study of ash layers through phytolith analyses from the Middle Paleolithic levels of Kebara and Tabun caves. Universitat de Barcelona, 1-226, <http://hdl.handle.net/2445/42640>, 1999.
- Anderson, J. P. E., and Domsch, K. H.: A physiological method for the quantitative measurement of microbial biomass in soils. *Soil Biol. Biochem.*, 10, 215-221. [https://doi.org/10.1016/0038-0717\(78\)90099-8](https://doi.org/10.1016/0038-0717(78)90099-8), 1978.
- Bailey, R.M., and Arnold, L.J.: Statistical modelling of single grain quartz De distributions and an assessment of procedures
970 for estimating burial doses. *Quaternary Sci. Rev.*, 25, 2475-2502. <https://doi.org/10.1016/j.quascirev.2005.09.012>, 2006.
- Ball, T. B., Gardner, J. S., and Anderson, N.: Identifying inflorescence phytoliths from selected species of wheat (*Triticum monococcum*, *T. dicoccon*, *T. dicoccoides*, and *T. aestivum*) and barley (*Hordeum vulgare* and *H. spontaneum*)(Gramineae). *Am. J. Bot.*, 86, 1615-1623, <https://doi.org/10.2307/2656798>, 1999.
- Bärnthol, R.: Nieder- und Mittelwald in Franken: Waldwirtschaftsformen aus dem Mittelalter, Fränkisches Freilandmuseums,
975 Bad Windsheim, 2003.
- Beigel, R.: Ein Michelsberger Teilskelett und metallzeitliche Gargruben: Das Gewerbegebiet von Burgbernheim als Fallbeispiel zur Archäologie im Gipskarst, *Beitr. z. Arch. in Mittelfranken*, 9, 95-130, 2019
- Bekker, R. M., and Cappers R. T. J.: Digitale Zadenatlas Van Nederland/Digital Seed Atlas of the Netherlands, Groningen Instituut voor Archeologie, 4, 1-502, 2006.
- 980 Berglund, B. E.: Handbook of Holocene Palaeoecology and Palaeohydrology, United Kingdom, <https://doi.org/10.1002/jqs.3390010111>, 1986.
- Birk, J. J., Teixeira, W. G., Neves, E. G., and Glaser, B.: Faeces deposition on Amazonian Anthrosols as assessed from 5 β -stanols, *J. Archaeol. Sci.*, 38, 1209-1220. <https://doi.org/10.1016/j.jas.2010.12.015>, 2011.
- Birk, J. J., Dippold, M., Wiesenberg, G. L., and Glaser, B.: Combined quantification of faecal sterols, stanols, stanones and
985 bile acids in soils and terrestrial sediments by gas chromatography–mass spectrometry, *J. Chromatogr. A*, 1242, 1-10, <https://doi.org/10.1016/j.chroma.2012.04.027>, 2012.
- Bläsing, M., Kistler, M., and Lehndorff, E.: Emission fingerprint of inland navigation vessels compared with road traffic, domestic heating and ocean going vessels, *Org. Geochem.*, 99, 1-9. <https://doi.org/10.1016/j.orggeochem.2016.05.009>, 2016.
- Bohn, U., Neuhäusl, R., Gollub, G., Hettwer, C., Neuhäuslová, Z., and Raus, T.: Map of the Natural Vegetation of Europe.
990 Scale 1: 2500000. Landwirtschaftsverlag, Münster, 2003.

- Bogaard, A.: The nature of early farming in central and south-east Europe. *Documenta Praehistorica*, 31, 49-58, <https://doi.org/10.4312/dp.31.4>, 2004.
- Borisov, A. V., and Peters, S.: Geoarchäologische Untersuchungen in Karbadinka 2 und 3, in: *Landschaftsarchäologie im Nordkaukasus, Archäologie in Eurasien*, edited by: Reinhold, S., Korobov, D., A., Belinksij, A. B., 38, 71-94, 2017.
- 995 Brestrich, W.: Die mittel- und spätbronzezeitlichen Grabfunde auf der Nordstadtterrasse von Singen am Hohentwiel. *Forschungen und Berichte zur Vor- und Frühgeschichte in Baden-Württemberg*, 67, 1-419, 1998.
- Brown, D. A.: Prospects and limits of a phytolith key for grasses in the central United States. *J. Archaeol. Sci.*, 11, 345–368, [https://doi.org/10.1016/0305-4403\(84\)90016-5](https://doi.org/10.1016/0305-4403(84)90016-5), 1984.
- Bull, I. D., Simpson, I. A., Dockrill, S. J., and Evershed, R. P.: Organic geochemical evidence for the origin of ancient anthropogenic soil deposits at Tofts Ness, Sanday, Orkney. *Org. Geochem.*, 30, 535-556, [https://doi.org/10.1016/S0146-6380\(99\)00020-0](https://doi.org/10.1016/S0146-6380(99)00020-0), 1999.
- 1000 Burns, R. G., DeForest, J. L., Marxsen, J., Sinsabaugh, R. L., Stromberger, M. E., Wallenstein, M. D., Weintraub, M. N., and Zoppini, A.: Soil enzymes in a changing environment: current knowledge and future directions, *Soil Biol. Biochem.*, 58, 216-234, <https://doi.org/10.1016/j.soilbio.2012.11.009>, 2013.
- 1005 Cabanes, D., Burjachs, F., Expósito, I., Rodríguez, A., Allué, E., Euba, I., and Vergès, J.M.: Formation processes through archaeobotanical remains: The case of the Bronze Age levels in El Mirador cave, Sierra de Atapuerca, Spain. *Quatern. Int.*, 193, 160–173, <https://doi.org/10.1016/j.quaint.2007.08.002>, 2009.
- Chernysheva, E. V., Korobov, D. S., Khomutova, T. E., and Borisov, A. V.: Urease activity in cultural layers at archaeological sites, *J. Archaeol. Sci.*, 57, 24-31, <https://doi.org/10.1016/j.jas.2015.01.022>, 2015.
- 1010 Crombé, P., Storme, A., Cruz, F., Allemeersch, L., Vandendriessche, H., Deforce, K., Mikkelsen, J., Aluwé, K., Boudin, M., and Sergant, J.: Early Holocene slope erosion in the Scheldt basin (Belgium): Naturally and/or human induced?. *Geomorphology*, 337, 79-93, <https://doi.org/10.1016/j.geomorph.2019.03.025>, 2019.
- Cunningham, A., and Wallinga, J.: Realizing the potential of fluvial archives using robust OSL chronology, *Quat. Geochronol.*, 12, 98-106, <https://doi.org/10.1016/j.quageo.2012.05.007>, 2012.
- 1015 Derrien M, Jarde E, Gruau G, and Pierson-Wickmann A.: Extreme variability of steroid profiles in cow faeces and pig slurries at the regional scale: implications for the use of steroids to specify faecal pollution sources in waters, *J. Agr. Food Chem.*, 59, 7294-7302, <https://doi.org/10.1021/jf201040v>, 2011.
- Dieckmann, B.: Mittelbronzezeitliche Siedlungen im Hegau, in: *Goldene Jahrhunderte. Die Bronzezeit in Südwestdeutschland*, edited by: Archäologisches Landesmuseum Baden-Württemberg, 2, 67-71, 1997.

- 1020 Dieckmann, B.: Siedlungen und Umwelt der Bronzezeit am Federsee und im westlichen Bodenseegebiet, in: Mensch und Umwelt in der Bronzezeit Europas, edited by: Hänsel, B., 373-394, 1998.
- Dietrich, L., Meister, J., Dietrich, O., Notroff, J., Kiep, J., Heeb, J., Beuger, A., and Schütt, B.: Cereal processing at Early Neolithic Göbekli Tepe, southeastern Turkey, *PloS One*, 14, 1-22, <https://doi.org/10.1371/journal.pone.0215214>, 2019.
- Don, A., Scholten, T., and Schulze, E. D.: Conversion of cropland into grassland: Implications for soil organic-carbon stocks in two soils with different texture, *J. Plant Nutr. Soil Sc.*, 172, 53-62. <https://doi.org/10.1002/jpln.200700158>, 2009.
- Dotterweich, M.: The history of soil erosion and fluvial deposits in small catchments of central Europe: deciphering the long-term interaction between humans and the environment—a review, *Geomorphology*, 101, 192-208. <https://doi.org/10.1016/j.geomorph.2008.05.023>, 2008.
- Dreibrodt, S., Lomax, J., Nelle, O., Lubos, C., Fischer, P., Mitusov, A., Reiss, S., Radtke, U., Nadeau, M., Meiert Grootes, P., and Bork, H. R.: Are mid-latitude slopes sensitive to climatic oscillations? Implications from an Early Holocene sequence of slope deposits and buried soils from eastern Germany, *Geomorphology*, 122, 351-369, <https://doi.org/10.1016/j.geomorph.2010.05.015>, 2010a.
- Dreibrodt S., Lubos C., Terhorst B., Damm B. and Bork H.-R.: Historical soil erosion by water in Germany: Scales and archives, chronology, research perspectives, *Quatern. Int.*, 222, 80-95. <https://doi.org/10.1016/j.quaint.2009.06.014>, 2010b.
- 1035 Dreibrodt, S., Nelle, O., Lütjens, I., Mitusov, A., Clausen, I., and Bork, H. R.: Investigations on buried soils and colluvial layers around Bronze Age burial mounds at Bornhöved (northern Germany): an approach to test the hypothesis of 'landscape openness' by the incidence of colluviation, *The Holocene*, 19, 487-497, <https://doi.org/10.1177/0959683608101397>, 2009.
- Duller, G. A. T.: Distinguishing quartz and feldspar in single grain luminescence measurements, *Radiat. Meas.*, 37, 161-165, [https://doi.org/10.1016/S1350-4487\(02\)00170-1](https://doi.org/10.1016/S1350-4487(02)00170-1), 2003.
- 1040 Eberhardt, E., Schad, P., Berner, T., Lehmann, C., Walthert, L., and Pietsch, D.: Ableitungsschlüssel KA5 (2005) nach WRB (2007), Bundesanstalt für Geowissenschaften und Rohstoffe (BGR), Hannover, Germany, 2014.
- Edgeworth, M., Richter, D., Waters, C., Haff, P., Neal, C., and Price, S. J.: Diachronous beginnings of the Anthropocene: The lower bounding surface of anthropogenic deposits, *The Anthropocene Review*, 2, 33-58, <https://doi.org/10.1177/2053019614565394>, 2015.
- 1045 Ehrle, J., Hald, J., and Höpfer, B.: Zehn Jahre Rettungsgrabung im Kieswerk Kohler bei Anselfingen: ein Resümee, *Archäologische Ausgrabungen in Baden-Württemberg 2017*, 44-49, 2018.
- Ellis, E. C.: Anthropogenic transformation of the terrestrial biosphere, *Philos. T. Roy. Soc. A*, 369, 1010-1035, <https://doi.org/10.1098/rsta.2010.0331>, 2011.

- Ellis, E. C., Kaplan, J. O., Fuller, D. Q., Vavrus, S., Goldewijk, K. K., and Verburg, P. H.: Used planet: A global history, P. Natl. Acad. Sci. USA, 110, 7978-7985, <https://doi.org/10.1073/pnas.1217241110>, 2013.
- Eusterhues, K., Lechterbeck, J., Schneider, J., and Wolf-Brozio, U.: Late-and Post-Glacial evolution of Lake Steisslingen (I): Sedimentary history, palynological record and inorganic geochemical indicators, Palaeogeography, Palaeoclimatology, Palaeoecology, 187, 341-371, [https://doi.org/10.1016/S0031-0182\(02\)00486-8](https://doi.org/10.1016/S0031-0182(02)00486-8), 2002.
- Falkenstein, F.: Zur Subsistenzwirtschaft der Bronzezeit in Mittel- und Südosteuropa, in: Die wirtschaftlichen Grundlagen der Bronzezeit Europas. Forschungen zur Archäometrie und Altertumswissenschaft, edited by: Bartelheim, M., and Stäuble, H., 4, 147-176, 2009.
- Gebhardt, A.: Micromorphological Analysis of Soil Structure Modifications Caused by Different Cultivation Implements, in: Prehistory of Agriculture, edited by: Anderson, P. C., Cotsen Institute of Archaeology Press, 260–266, <https://doi.org/10.2307/j.ctvhhhg2j.30>, 1999.
- Galbraith, R.F., Roberts, R.G., Laslett, G.M., Yoshida, and H., Olley, J.M.: Optical dating of single and multiple grains of quartz from Jinmium rock shelter, northern Australia: Part I, experimental design and statistical models, Archaeometry, 41, 339-364, <https://doi.org/10.1111/j.1475-4754.1999.tb00987>, 1999.
- Garscha, F.: Welschingen-Neuhausen A. Engen. Fundberichte aus Baden-Württemberg. 3, 360, 1936.
- Geyer, O. F., Gwinner, M. P., Geyer, M., Nitsch, E., and Simon, T.: Geologie von Baden-Württemberg 5, 627, Germany, 2011.
- Gnepf-Horisberger, U., and Hämmerle, S.: Cham-Oberwil, Hof (Kanton Zug). Befunde und Funde aus der Glockenbecherkultur und Bronzezeit, Antiqua 33, Basel, 2001.
- Haas, J. N., and Hadorn, P.: Die Vegetations- und Kulturlandschaftsgeschichte des Seebachtals von der Mittelsteinzeit bis zum Frühmittelalter anhand von Pollenanalysen. Das Seebachtal – Eine archäologische und paläoökologische Bestandsaufnahme. Archäologie im Thurgau, 4, 221-255, 1998.
- Hald, J.: Weitere Ausgrabungen im bronze- bis merowingerzeitlichen Siedlungsareal von Ehingen, Archäologische Ausgrabungen in Baden-Württemberg 2014, 250-253, 2015.
- Hald, J.: Siedlungsbefunde der Bronze- und Eisenzeit bei Bietingen, Archäologische Ausgrabungen in Baden-Württemberg 2015, 107-110, 2016.
- Hald, J., and Kramer, W.: Archäologische Schätze im Kreis Konstanz. Greuter, 2011.
- Hald, J., Häußler, G., and Höpfer, B.: Neue archäologische Ausgrabungen in der eisenzeitlichen Siedlung von Welschingen, Flur „Guuhaslen“, Archäologische Ausgrabungen in Baden-Württemberg 2014, 120-123, 2015.
- Hald, J.: Langbauten in der Kiesgrube Kohler bei Anselfingen? Archäologische Ausgrabungen in Baden-Württemberg 2019, 94-96, 2020.

- 1080 Heeb, B., S.: Das Bodenseerheintal als Siedlungsraum und Verkehrsweg in prähistorischen Epochen: Eine siedlungsarchäologische Untersuchung, *Frankfurter archäologische Schriften*, 20, 2012.
- Henkner, J., Ahlrichs, J. J., Downey, S., Fuchs, M., James, B. R., Knopf, T., Scholten, T., Teuber, S., and Kühn, P.: Archaeopedology and chronostratigraphy of colluvial deposits as a proxy for regional land use history (Baar, southwest Germany), *Catena*, 155, 93-113, <https://doi.org/10.1016/j.catena.2017.03.005>, 2017.
- 1085 Henkner, J., Ahlrichs, J., Downey, S., Fuchs, M., James, B., Junge, A., Knopf T., Scholten T., and Kühn, P.: Archaeopedological analysis of colluvial deposits in favourable and unfavourable areas: Reconstruction of land use dynamics in SW Germany, *Roy. Soc. Open Sci.*, 5, 1-24, <https://doi.org/10.1098/rsos.171624>, 2018a.
- Henkner, J., Ahlrichs, J., Fischer, E., Fuchs, M., Knopf, T., Rösch, M., Scholten, T., and Kühn, P.: Land use dynamics derived from colluvial deposits and bogs in the Black Forest, Germany, *J. Plant Nutr. Soil Sc.*, 181, 240-260. <https://doi.org/10.1002/jpln.201700249>, 2018b.
- 1090 Hochuli, S., Schibler, J., and Veszeli, M.: Zur Erforschung der Bronzezeit im Kanton Zug, in: *Cham-Oberwil, Hof (Kanton Zug). Befunde und Funde aus der Glockenbecherkultur und Bronzezeit*, edited by: Gnepf-Horisberger, U., and Hämmerle, S., *Antiqua* 33, 181-194, 2001.
- Honeck, M.: Nichts als heiße Steine? Zur Deutung der Brenngruben der späten Bronzezeit und frühen Eisenzeit in Deutschland, *Univ. Forsch. Prähist. Arch.* 166, 2009.
- 1095 Hölzer A. and Hölzer A.: Paläoökologische und siedlungsgeschichtliche Untersuchungen im Seewadel bei Singen (Hegau), *Ber. Römisch-German. Kommission*, 71, 309-333, 1990.
- Honig, P.: Studien zur bronzezeitlichen Keramikentwicklung am Beispiel der Siedlungskeramik der Windsheimer Bucht und des süddeutschen Donaupraumes, *Arbeiten zur Archäologie Süddeutschlands*, 22, 2008.
- 1100 Hopert, S., Schlichtherle, H., Schöbel, G., Spatz, H., and Walter, P.: Der „Hals“ bei Bodman. Eine Höhensiedlung auf dem Bodanrück und ihr Verhältnis zu den Ufersiedlungen des Bodensees, *Regensburger Beitrag Prähistorische Archäologie*, 5, 91-154, 1998.
- Höpfer, B.: Früh-/mittelbronzezeitliche Siedlungsspuren aus Weiterdingen, *Lkrs. Konstanz, Fundberichte aus Baden-Württemberg*, 34, 555-577, <https://doi.org/10.11588/fbbw.2014.1.44482>, 2014.
- 1105 Höpfer, B., Rottler, S., Vogt, R., and Knopf, T.: Bronzezeit im Hinterland des Bodensees: Siedlungsreste und Kolluvien aus Bodman, *Fundberichte aus Baden-Württemberg*, 36, 53-76, 2016.
- Höpfer, B., Deckers, K., Scherer, S., Scholten, T., Kühn, P., and Knopf, T.: Mittelbronzezeitliche Siedlungsfunde aus Engen-Anselingen (Lkr. Konstanz, Baden-Württemberg): erste Einblicke in Struktur und Organisation der Siedlung, in: *Elemente bronzezeitlicher Siedlungslandschaften, Studien zur nordeuropäischen Bronzezeit*, edited by: Willroth, K.-H., 5, accepted.

- IUSS Working Group WRB: World reference base for soil resources 2014, update 2015. International soil classification system for naming soils and creating legends for soil maps. World soil resources reports No. 106, <http://www.fao.org/3/a-i3794en.pdf>, 2015.
- Jacomet, S.: Prähistorische Getreidefunde. Eine Anleitung zur Bestimmung prähistorischer Gersten- und Weizenfunde, 70, Basel, 1987.
- Jacomet, S., Christoph B., and Dick, M.: Archäobotanik am Zürichsee. Ackerbau, Sammelwirtschaft und Umwelt von neolithischen und bronzezeitlichen Seeufersiedlungen im Raum Zürich. Ergebnisse von Untersuchungen pflanzlicher Makroreste der Jahre 1979-1988., Berichte der Zürcher Denkmalpflege/Monographien, 7, 348, 1989.
- Jansen, D., and Nelle, O.: The Neolithic woodland–archaeoanthracology of six Funnel Beaker sites in the lowlands of Germany, *J. Archaeol. Sci.*, 51, 154-163, <https://doi.org/10.1016/j.jas.2012.10.024>, 2014.
- Jansen, B., and Wiesenberg, G. L.: Opportunities and limitations related to the application of plant-derived lipid molecular proxies in soil science, *Soil*, 3, 211-234. <https://doi.org/10.5194/soil-3-211-2017>, 2017.
- Jennings, B.: Late Bronze Age exchange and interaction in the northern Circum-Alpine region: not only across the Alps, in: *Inter-regional contacts during the first millenium BC in Europe*, edited by: Jennings, B., Trefny, M., 24, Pilsen, 2017.
- Kadereit, A., Kühn, P., and Wagner, G. A.: Holocene relief and soil changes in loess-covered areas of south-western Germany: The pedosedimentary archives of Bretten-Bauerbach (Kraichgau). *Quatern. Int.*, 222, 96-119, <https://doi.org/10.1016/j.quaint.2009.06.025>, 2010.
- Kandeler, E., and Gerber, H.: Short-term assay of soil urease activity using colorimetric determination of ammonium, *Biol. Fert. Soils*, 6, 68-72. <https://doi.org/10.1007/BF00257924>, 1988.
- Kappenberg, A., Braun, M., Amelung, W., and Lehndorff, E.: Fire condensates and charcoals: Chemical composition and fuel source identification, *Org. Geochem.*, 130, 43-50, <https://doi.org/10.1016/j.orggeochem.2019.01.009>, 2019.
- Katz, O., Cabanes, D., Weiner, S., Maeir, A. M., Boaretto, E., and Shahack-Gross, R.: Rapid phytolith extraction for analysis of phytolith concentrations and assemblages during an excavation: an application at Tell es-Safi/Gath, Israel. *J. Archaeol. Sci.*, 37, 1557-1563, <https://doi.org/10.1016/j.jas.2010.01.016>, 2010.
- Kellner-Depner, C.: Die Latènesiedlung von Anselfingen im Hegau, *Fundberichte aus Baden-Württemberg*, 36, 103-200, 2016.
- Kittel, P.: The prehistoric human impact on slope development at the archaeological site in Smólsk (Kuyavian Lakeland), *Bulletin of Geography. Physical Geography Series*, 8, 107-122, <https://doi.org/10.1515/bgeo-2015-0009>, 2015.
- Knaap van der, W. O., and Van Leeuwen, J. F. N.: Vegetationsgeschichte und menschlicher Einfluss in der Umgebung des Bibersees zwischen 2600 und 50 v. Chr., in: *Cham-Oberwil, Hof (Kanton Zug). Befunde und Funde aus der Glockenbecherkultur und Bronzezeit*, edited by: Gnepf-Horisberger, U., and Hämmerle, S., *Antiqua* 33, 181-194, 2001.

- Knopf, T.: Ressourcennutzung und Umweltverhalten prähistorischer Bauern. Eine Analyse archäologischer und ethnographischer Untersuchungen, RessourcenKulturen, 3, Tübingen University Press, 2017.
- 1140 Kokabi, M.: Ergebnisse der osteologischen Untersuchungen an den Knochenfunden von Hornstaad im Vergleich zu anderen Feuchtbodenfundkomplexen Südwestdeutschlands. Bericht der Römisch-Germanischen Kommission, 71, 145-160, 1990.
- Kołodzyńska-Gawrysiak, R., Poesen, J., and Gawrysiak, L.: Assessment of long-term Holocene soil erosion rates in Polish loess areas using sedimentary archives from closed depressions. *Earth Surface Processes and Landforms*, 43(5), 978-1000, 1145 <https://doi.org/10.1002/esp.4296>, 2018.
- Königer, J.: Die frühbronzezeitlichen Ufersiedlungen von Bodman-Schachen I–Befunde und Funde aus den Tauchsondagen 1982–1984 und 1986. *Siedlungsarchäologie im Alpenvorland VIII, Forschungen und Berichte zur Vor- und Frühgeschichte in Baden-Württemberg*, 85, 2006.
- Königer, J.: Bronze Age lacustrine settlements in the Circum-Alpine region: chronology, architectural styles, occupational patterns, and much more, in: *The end of the Lake-Dwellings in the Circum-Alpine Region*, edited by: Menotti, F., United Kingdom, 15-67, 2015.
- 1150 Kraft, G.: Funde aus einer Kiesgrube bei Welschingen (Hegau), *Fundberichte aus Baden-Württemberg*, 1, 211-213, 1928.
- Krause, R., Christoforidis, A., Kromer, B., Pernicka, E., and Shroter, P.: Die endneolithischen und frühbronzezeitlichen Grabfunde auf der Nordstadtterrasse von Singen am Hohentwiel, *Forschungen und Berichte zur Vor- und Frühgeschichte in Baden-Württemberg*, 32, 1988.
- 1155 Krumland, J.: Die bronzezeitliche Siedlungskeramik zwischen Elsaß und Böhmen. *Studien zur Formenkunde und Rekonstruktion der Besiedlungsgeschichte in Nord- und Südwürttemberg. Internationale Archäologie*, 49, 1998.
- Kühn P., Lehndorff E., Fuchs M.: Late Pleniglacial to Holocene Pedogenesis and Formation of Colluvial Deposits in Central Europe (Gambach, Germany), *Catena* 154, 118-135. doi: 10.1016/j.catena.2017.02.01, 2017.
- 1160 Lauer, F., Prost, K., Gerlach, R., Pätzold, S., Wolf, M., Urmersbach, S., Lehndorff, E., Eckmeier, E., and Amelung, W.: Organic fertilization and sufficient nutrient status in prehistoric agriculture? – Indications from multi-proxy analyses of archaeological topsoil relicts, *PloS One*, 9, <https://doi.org/10.1371/journal.pone.0106244>, 2014.
- Lang, A.: Phases of soil erosion-derived colluviation in the loess hills of South Germany, *Catena*, 51, 209-221, [https://doi.org/10.1016/S0341-8162\(02\)00166-2](https://doi.org/10.1016/S0341-8162(02)00166-2), 2003.
- 1165 Lechterbeck, J.: " Human Impact" oder" Climatic Change"? Zur Vegetationsgeschichte des Spätglazials und Holozäns in hochauflösenden Pollenanalysen laminiertes Sedimente des Steisslinger Sees (Südwestdeutschland), *Institut und Museum für Geologie und Paläontologie der Universität Tübingen*, 25, 2001.

- Lehndorff, E., and Schwark, L.: Biomonitoring of air quality in the Cologne Conurbation using pine needles as a passive sampler—Part II: polycyclic aromatic hydrocarbons (PAH), *Atmos. Environ.*, 38, 3793-3808, 1170 <https://doi.org/10.1016/j.atmosenv.2004.03.065>, 2004.
- Lehndorff, E., and Schwark, L.: Biomonitoring airborne parent and alkylated three-ring PAHs in the Greater Cologne Conurbation I: Temporal accumulation patterns, *Environ. Pollut.*, 157, 1323-1331, <https://doi.org/10.1016/j.envpol.2008.11.037>, 2009.
- Lewis, H.: Investigating ancient arable farming. An experimental and soil micromorphological study, *British Archaeological Reports*, Oxford, UK, 118 pp., 2012.
- LGRB – Regierungspräsidium Freiburg, Landesamt für Geologie, Rohstoffe und Bergbau Baden-Württemberg: WMS LGRB-BW HW_GEO: Geogene Grundgehalte (Hintergrundwerte) in petrogeochemischen Einheiten von Baden-Württemberg 1:300000. LGRB Freiburg, Germany. <https://maps.lgrb-bw.de>, 2020.
- Lindemann, M.: Gargruben, eine Erklärung von eingetieften Feuerstellen? *Experimentelle Archäologie in Europa*, 7, 49–65, 1180 2008.
- Lutz, J., and Pernicka, E.: Prehistoric copper from the Eastern Alps, *Open Journal of Archaeometry*, 1, <https://doi.org/10.4081/arc.2013.e25>, 2013.
- Lyman, R. L.: Quantitative units and terminology in zooarchaeology. *American Antiquity*, 36-71, <https://doi.org/10.2307/3085500>, 1994.
- 1185 Macphail, R.I.: Soil history and micromorphology. In Bell, M. Brean Down Excavations 1983-1987, Microfiche. English Heritage Archaeological Report No. 15. London: Historic Buildings and Monuments Commission for England, 187-96, 1990.
- Macphail, R. I., Courty, M. A., and Gebhardt, A.: Soil micromorphological evidence of early agriculture in north-west Europe, *World Archaeology*, 22, 53–69, <https://doi.org/10.1080/00438243.1990.9980129>, 1990.
- Madella, M., Alexandre, A., and Ball, T.: International code for phytolith nomenclature 1.0. *Ann. Bot.*, 96, 253–260, 1190 <https://doi.org/10.1093/aob/mci172>, 2005.
- Madella, M., and Lancelotti, C.: Taphonomy and phytoliths: A user manual, *Quatern. Int.*, 275, 76–83, <https://doi.org/10.1016/j.quaint.2011.09.008>, 2012.
- Meister, J., Krause, J., Müller-Neuhof, B., Portillo, M., Reimann, T., Schütt, B.: Desert agricultural systems at EBA Jawa (Jordan): Integrating archaeological and paleoenvironmental records, *Quatern. Int.*, 9th International Meeting of Phytolith Research (IMPR), 434, 33–50, <https://doi.org/10.1016/j.quaint.2015.12.086>, 2017.
- 1195 Menotti, F.: "The missing period": middle bronze age lake-dwellings in the Alps, *Archaeopress*, 184, United Kingdom, 2001.

- Menotti, F.: Cultural response to environmental change in the Alpine lacustrine regions: The displacement model, *Oxford J. Archaeol.*, 22, 375-396, <https://doi.org/10.1046/j.1468-0092.2003.00194.x>, 2003.
- 1200 Merkt J., and Streif H.: Stechrohr-Bohrgeräte für limnische und marine Lockersedimente. *Geologisches Jahrbuch*, 88, 137-148, 1970.
- Miller, B. A. and Juilleret, J.: The colluvium and alluvium problem: Historical review and current state of definitions. *Earth Sci Reviews*, <https://doi.org/10.1016/j.earscirev.2020.103316>, 2020.
- Mosandl, R., and Abt, A.: Waldbauverfahren in Eichenwäldern gestern und heute. *AFZ-Der Wald*, 20, 28-32, 2016.
- Mouritsen, O. G., and Zuckermann, M. J.: What's so special about cholesterol? *Lipids*, 39, 1101-1113, 1205 <https://doi.org/10.1007/s11745-004-1336-x>, 2004.
- Murray, A. S., and Wintle, A. G.: Luminescence dating of quartz using an improved single-aliquot regenerative-dose protocol, *Radiat. Meas.*, 32, 57-73, [https://doi.org/10.1016/S1350-4487\(99\)00253-X](https://doi.org/10.1016/S1350-4487(99)00253-X), 2000.
- Murray, A. S., and Wintle, A. G.: The single aliquot regenerative dose protocol: potential for improvements in reliability, *Radiat. Meas.*, 37, 377-381, [https://doi.org/10.1016/S1350-4487\(03\)00053-2](https://doi.org/10.1016/S1350-4487(03)00053-2), 2003.
- 1210 Nölte, J.: ICP-Emissionsspektrometrie für Praktiker: Grundlagen, Methodenentwicklung, Anwendungsbeispiele. Wiley-VCH, 2002.
- Oberrath, S.: Tod und Bestattung in der Bronzezeit: Untersuchungen zum Bestattungsbrauchtum der mittleren und späten Bronzezeit in Südwürttemberg; Traditionen und Veränderungen, Universitas, 2003.
- Pietsch, D., and Machado, M. J.: Colluvial deposits—proxies for climate change and cultural chronology. A case study from 1215 Tigray, Ethiopia, *Z. Geomorphol., Supplementary Issues*, 58, 119-136, <https://doi.org/10.1127/0372-8854/2012/S-00114>, 2014.
- Pietsch, D., and Kühn, P.: Buried soils in the context of geoarchaeological research—two examples from Germany and Ethiopia. *Archaeol. Anthrop. Sci.*, 9, 1571–1583, <https://doi.org/10.1007/s12520-014-0180-9>, 2017.
- Piperno, D., R.: *Phytoliths: A Comprehensive Guide for Archaeologists and Palaeoecologists*. Rowman Altamira, 2006.
- 1220 Ponomarenko, E. V., Ershova, E. G., Stashenkov, D. A., Ponomarenko, D. S., and Kochkina, A. F.: Tracing land use history using a combination of soil charcoal and soil pollen analysis: An example from colluvial deposits of the Middle Volga region, *J. Archaeol. Sci.: Reports*, 31, <https://doi.org/10.1016/j.jasrep.2020.102269>, 2020
- Poręba, G., Śnieszko, Z., Moska, P., and Mroczek, P.: Deposits of Neolithic water soil erosion in the loess region of the Małopolska Upland (S Poland)—A case study of the settlement micro-region in Bronocice, *Quarter. Int.*, 502, 45-59, 1225 <https://doi.org/10.1016/j.quaint.2018.09.018>, 2019.

- Portillo, M., Kadowaki, S., Nishiaki, Y., and Albert, R., M.: Early Neolithic household behavior at Tell Seker al-Aheimar (Upper Khabur, Syria): A comparison to ethnoarchaeological study of phytoliths and dung spherulites, *J. Archaeol. Sci.*, 42, 107–118, <https://doi.org/10.1016/j.jas.2013.10.038>, 2014.
- 1230 Prost, K., Birk, J. J., Lehndorff, E., Gerlach, R., and Amelung, W.: Steroid biomarkers revisited—Improved source identification of faecal remains in archaeological soil material. *PloS One*, 12, <https://doi.org/10.1371/journal.pone.0164882>, 2017.
- Ramsey, C., B.: Bayesian analysis of radiocarbon dates. *Radiocarbon*, 51, 337-360, <https://doi.org/10.1017/S0033822200033865>, 2009.
- Redman, C. L.: Human impact on ancient environments, Arizona University Press, 1999.
- 1235 Reimer, P., J., Bard, E., Bayliss, A., Beck, J., W., Blackwell, P., G., Ramsey, C., B., and Grootes, P., M.: IntCal13 and Marine13 radiocarbon age calibration curves 0–50,000 years cal BP, *Radiocarbon*, 55, 1869-1887, https://doi.org/10.2458/azu_js_rc.55.16947, 2013.
- Richter, H., and Howard, J. B.: Formation of polycyclic aromatic hydrocarbons and their growth to soot—a review of chemical reaction pathways. *Progress in Energy and Combustion science*, 26, 565-608, [https://doi.org/10.1016/S0360-1285\(00\)00009-5](https://doi.org/10.1016/S0360-1285(00)00009-5), 2002.
- 1240 Rigert, E., Stehrenberger, T., Rentzel, P., and Joos, M.: Tägerwilen Hochstross: Dörfer und Gehöfte der Bronze- und Eisenzeit, in: *A7 – Ausfahrt Archäologie. Prospektion und Grabungen im Abschnitt Schwaderloh-Landesgrenze*, edited by: Rigert, E., *Archäologie im Thurgau*, 10, 71-88, 2001.
- Rösch, M.: New approaches to prehistoric land-use reconstruction in south-western Germany, *Veg. Hist. Archaeobot.*, 5, 65-79, <http://dx.doi.org/10.1007/BF00189436>, 1996.
- 1245 Rösch, M.: Der Mensch als landschaftsprägender Faktor des westlichen Bodenseegebietes seit dem späten Atlantikum. *Eiszeitalter und Gegenwart*, 37, 19-29, 1987.
- Rösch, M.: Land use and food production in Central Europe from the Neolithic to the Medieval period: Change of landscape, soils and agricultural systems according to archaeobotanical data, in: *Economic Archaeology: From Structure to Performance in European Archaeology*, edited by: Kerig, T., and Zimmermann, A., 237, 109-128, 2013.
- 1250 Rösch, M., Kleinmann, A., Lechterbeck, J., and Wick, L.: Botanical off-site and on-site data as indicators of different land use systems: a discussion with examples from Southwest Germany, *Veg. Hist. Archaeobot.*, 23, 121-133, <http://dx.doi.org/10.1007/s00334-014-0477-8>, 2014a.
- 1255 Rösch, M., Fischer, E., Kleinmann, A., Lechterbeck, J., Tserendorj, G., and Wick, L.: Bronzezeitliche Landnutzung im diachronen Vergleich – Fallbeispiele aus Südwestdeutschland, in: *Ressourcen und Rohstoffe in der Bronzezeit, Arbeitsberichte zur Bodendenkmalpflege in Brandenburg*, edited by: Nessel, B., Heske, I., and Brandherm, D., 26, 2014b.

- Rösch M., Fischer E., Lechterbeck J., Kleinmann A., Sillmann M., Tserendorj G., and Wick L.: Bronze Age Land Use and Food Production in Southwest Germany in Light of Botanical On-Site and Off-Site Data, in: *The Third Food Revolution? Setting the Bronze Age Table: Common Trends in Economic and Subsistence Strategies in Bronze Age Europe*, Human Developments in Landscapes, edited by: Kneisel, J., Dal Corso, M., Kirleis, W., Scholz, H., Tylor, N., Tiedtke, V., 6, 1260
Universitätsforschungen zur Prähistorischen Archäologie, 283, 201-219, 2015.
- Rösch, M., Feger, K.-H., Fischer, E., Hinderer, M., Kämpf, L., Kleinmann, A., Lechterbeck, J., Marinova, E., Schwalb, A., Tserendorj, G., Wick, L.: How changes of past vegetation and human impact are documented in lake sediments: Paleoenvironmental research in Southwestern Germany, a review, in: *Limnogeology: Progress, challenges and opportunities: A tribute to Elizabeth Gierlowski-Kordes*, Syntheses in Limnogeology, edited by: Rosen, M. R., Park-Boush, L., Finkelstein, 1265
D. B., Pueyo, S. P., Springer, accepted.
- Scherer, S., Deckers, K., Dietel J., Fuchs M., Henkner J., Höpfer B., Junge A., Kandeler, E., Lehndorff, E., Leinweber, P., Lomax, J., Miera, J., Poll, C., Toffolo, M. B., Knopf, T., Scholten, T. and Kühn P.: What's in a colluvial deposit? Perspectives from archaeopedology, *Catena*, <https://doi.org/10.1016/j.catena.2020.105040>, 2021.
- Scherer, S., Höpfer, B., Deckers, D., Fischer, E., Fuchs, M., Kandeler, E., Lechterbeck, J., Lehndorff, E., Lomax, J., Marhan, 1270
S., Marinova, M., Meister, J., Poll, C., Rahimova, H., Rösch, M., Wroth, K., Zastrow, J., Knopf, T., Scholten, T., Kühn, P.: Data from: Middle Bronze Age land use practices in the north-western Alpine foreland – A multi-proxy study of colluvial deposits, archaeological features and peat bogs, *Dryad*, Dataset, <https://doi.org/10.5061/dryad.sj3tx963f>, 2020.
- Scheu S.: Automated measurement of the respiratory response of soil microcompartments: active microbial biomass in earthworm faeces, *Soil Biol. Biochem.*, 24, 1113–1118, [https://doi.org/10.1016/0038-0717\(92\)90061-2](https://doi.org/10.1016/0038-0717(92)90061-2), 1992.
- 1275 Schöbel, G.: Die Spätbronzezeit am nordwestlichen Bodensee: Taucharchäologische Untersuchungen in Hagnau und Unteruhldingen 1982-1989, *Forschungen und Berichte zur Vor- und Frühgeschichte in Baden-Württemberg*, 47, 9-202, 1996.
- Schreiner, A.: Hegau und westlicher Bodensee. Sammlung Geologischer Führer , 62, Germany, 2008.
- Schroedter, T. M., Dreibrodt, S., Hofmann, R., Lomax, J., Müller, J., and Nelle, O.: Interdisciplinary interpretation of challenging archives: Charcoal assemblages in Drina Valley alluvial and colluvial sediments (Jagnilo, Bosnia and 1280
Herzegovina). *Quatern. Int.*, 289, 36-45, <https://doi.org/10.1016/j.quaint.2012.02.030>, 2013.
- Schulte, A., and Stumböck, M.: Late glacial and Holocene environmental changes in the Hegau Region, Southwest Germany, *Acta Universitatis Carolinae, Geographica*, 25, 85-97, 2000.
- Schweingruber, F. H.: *Microscopic Wood Anatomy: Mikroskopische Holz Anatomie, Anatomie microscopique du bois*. Birmensdorf, Eidgenössische Forschungsanstalt für Wald, Schnee und Landschaft in Bern, 1990a.

- 1285 Schweingruber, F. H.: Anatomie europäischer Hölzer. Ein Atlas zur Bestimmung europäischer Baum-, Strauch- und Zwergstrauchhölzer. Anatomy of European woods/An atlas for the identification of European trees, shrubs and dwarf shrubs, Eidgenössische Forschungsanstalt für Wald, Schnee und Landschaft in Bern, 1990b.
- Simpson, I. A., van Bergen, P. F., Perret, V., Elhmmali, M. M., Roberts, D. J., and Evershed, R. P.: Lipid biomarkers of manuring practice in relict anthropogenic soils, *The Holocene*, 9, 223-229, <https://doi.org/10.1191/095968399666898333>,
1290 1999.
- Skujiņš, J. J., and McLaren, A. D.: Persistence of enzymatic activities in stored and geologically preserved soils, *Enzymologia*, 34, 213, 1968.
- Smolders, E., and Mertens, J.: Cadmium, in: *Heavy Metals in Soils: Trace Metals and Metalloids in Soils and their Bioavailability*, edited by: Alloway, B., J., *Environ. Pollut.*, 22, 283–312, 2013.
- 1295 Steinhof, A., Altenburg, M., and Machts, H.: Sample Preparation at the Jena ¹⁴C Laboratory, *Radiocarbon*, 59, 815-830, <https://doi.org/10.1017/RDC.2017.50>, 2017.
- Stephan, E.: Die Tierknochenfunde aus der früh- bis mittelbronzezeitlichen Siedlung im „Forschner“ Federseemoor, in: *Die früh- und mittelbronzezeitliche „Siedlung Forschner“ im Federseemoor. Naturwissenschaftliche Untersuchungen. Bohlenwege, Einbäume und weitere botanische Beiträge, Siedlungsarchäologie im Alpenvorland XIII, Forsch. u. Ber. Vor- u.*
1300 *Frühgesch. Baden-Württemberg*, 128, 195-283, 2016.
- Stika, H.-P., and Heiss, A.: Bronzezeitliche Landwirtschaft in Europa – Der Versuch einer Gesamtdarstellung des Forschungsstandes, in: *Studien zur nordeuropäischen Bronzezeit*, edited by: Willroth, K.-H., 1, 189-222, 2013.
- Stiner, M. C., Kuhn, S. L., Weiner, S., and Bar-Yosef, O.: Differential burning, recrystallization, and fragmentation of archaeological bone, *Journal of archaeological science*, 22, 223-237, 1995, <https://doi.org/10.1006/jasc.1995.0024>.
- 1305 Stoops, G.: Guidelines for analysis and description of soil and regolith thin sections, *Soil Sci. Soc. Am. J.*, USA, 2003.
- Stuiver, M., and Polach, H., A.: Discussion reporting of ¹⁴C data, *Radiocarbon*, 19, 355-363, <https://doi.org/10.1017/S0033822200003672>, 1977.
- Tan, Z., Wu, C., Han, Y., Zhang, Y., Mao, L., Li, D., Liu, L., Su, G., and Yan, T.: Fire history and human activity revealed through poly cyclic aromatic hydrocarbon (PAH) records at archaeological sites in the middle reaches of the Yellow River
1310 drainage basin, China, *Palaeogeography, Palaeoclimatology, Palaeoecology*, <https://doi.org/10.1016/j.palaeo.2020.110015>, 2020.
- Taylor, J. P., Wilson, B., Mills, M., S., and Burns, R. G.: Comparison of microbial numbers and enzymatic activities in surface soils and subsoils using various techniques, *Soil Biol. Biochem.*, 34, 387-401. [https://doi.org/10.1016/S0038-0717\(01\)001997](https://doi.org/10.1016/S0038-0717(01)001997), 2002.

- 1315 Tegtmeier, U.: Neolithische und bronzezeitliche Pflugspuren in Norddeutschland und in den Niederlanden. *Archäologische Informationen*, 10(1), 1987.
- Tinner, W., Lotter, A. F., Ammann, B., Conedera, M., Hubschmid, P., van Leeuwen, J., F., and Wehrli, M.: Climatic change and contemporaneous land-use phases north and south of the Alps 2300 BC to 800 AD, *Quaternary Sci. Rev.*, 22, 1447-1460, [https://doi.org/10.1016/S0277-3791\(03\)00083-0](https://doi.org/10.1016/S0277-3791(03)00083-0), 2003.
- 1320 Torbrügge, W.: Die Bronzezeit in Bayern. Stand der Forschungen zur relativen Chronologie. Bericht der Römisch-Germanischen Kommission, 78, <https://doi.org/10.11588/berrgk.1960.0.41554>, 1959.
- Tsartsidou, G., Lev-Yadun, S., Albert, R.-M., Miller-Rosen, A., Efstratiou, N., and Weiner, S.: The phytolith archaeological record: strengths and weaknesses evaluated based on a quantitative modern reference collection from Greece, *J. Archaeol. Sci.*, 34, 1262–1275, <https://doi.org/10.1016/j.jas.2006.10.017>, 2007.
- 1325 Tserendorj, G., Marinova, E., Lechterbeck, J., Behling, H., Wick, L., Fischer, E., Sillmann, M., Märkle, T. and Rösch, M.: Intensification of agriculture in southwestern Germany between Bronze Age and Medieval period, based on archaeobotanical data from Baden-Württemberg, *Veg. Hist. Archaeobot.*, accepted.
- Tudyka, K., Bluszcz, A., Poręba, G., Miłosz, S., Adamiec, G., Kolarczyk, A., Kolb, T., Lomax, J., and Fuchs, M.: Increased dose rate precision in combined α and β counting in the μ Dose system—a probabilistic approach to data analysis, *Radiat. Meas.*, <https://doi.org/10.1016/j.radmeas.2020.106310>, 2020.
- 1330 Twardy, J.: Influences of man and climate changes on relief and geological structure transformation in Central Poland since the Neolithic, *Geographia Polonica*, 84, 163-178, 2011.
- Twiss, P., C., Suess, E., and Smith, R., M.: Morphological classification of grass phytoliths, *Soil Sci. Soc. Am. J.*, 33, 109–115, <https://doi.org/10.2136/sssaj1969.03615995003300010030x>, 1969.
- 1335 Usai, M.R.: Textural Pedofeatures and Pre-Hadrian's Wall Ploughed Paleosols at Stanwix, Carlisle, Cumbria, U.K, *J. Archaeol. Sci.*, 28, 541–553, <https://doi.org/10.1006/jasc.2001.0609>, 2001.
- Vogt, R.: Kolluvien als Archive für anthropogen ausgelöste Landschaftsveränderungen an Beispielen aus der westlichen Bodenseeregion, *Materialhefte zur Archäologie in Baden-Württemberg*, 99, 2014.
- Völkel, J.: Bodenbelastung durch Schwermetalle, in: *Nationalatlas Bundesrepublik Deutschland*, edited by: Leibniz-Institut für Länderkunde, 2, 112-113, 2003.
- 1340 Vrška, T., Adam, D., Hort, L., Kolář, T. and Janík, D.: European beech (*Fagus sylvatica L.*) and silver fir (*Abies alba Mill.*) rotation in the Carpathians—A developmental cycle or a linear trend induced by man?, *Forest Ecol. Manag.*, 258, 347-356, <https://doi.org/10.1016/j.foreco.2009.03.007>, 2009.

- 1345 Weiskopf, A., Harvey, E., Kingwell-Banham, E., Kajale, M., Mohanty, R., and Fuller, D., Q.: Archaeobotanical implications
of phytolith assemblages from cultivated rice systems, wild rice stands and macro-regional patterns, *J. Archaeol. Sci.*, 51, 43-
53, <https://doi.org/10.1016/j.jas.2013.04.026>, 2014.
- Whitlock, C., and Larsen, C.: Charcoal as a fire proxy, in: *Tracking environmental change using lake sediments*, edited by:
Smol, J. B., Birks, H.J.B, and Last Springer W.M., 75-97, 2002.
- 1350 Winiwarter, V. and Bork, H.-R.: *Geschichte unserer Umwelt: 66 Reisen durch die Zeit*, Jubiläumsausgabe, 3., erweiterte
und aktualisierte Auflage ed. wbg Theiss, Darmstadt, 208 pp, 2019.
- Wissert, R.: Hilzingen Binningen (Kreis Konstanz), *Fundberichte aus Baden-Württemberg*, 10, 483, 1985.
- Yunker, M., B., Macdonald, R., W., Vingarzan, R., Mitchell, R., H., Goyette, D., and Sylvestre, S.: PAHs in the Fraser River
basin: A critical appraisal of PAH ratios as indicators of PAH source and composition, *Org. Geochem.*, 33, 489-515,
[https://doi.org/10.1016/S0146-6380\(02\)00002-5](https://doi.org/10.1016/S0146-6380(02)00002-5), 2002.
- 1355 Young, S. D.: Chemistry of heavy metals and metalloids in soils, in: *Heavy metals in soils*, edited by: Alloway, B., J., 51-95,
2013.
- Zádorová, T. and Penížek, V.: Formation, morphology and classification of colluvial soils: A review, *Eur. J. Soil Sci.*, 69,
577-591, <https://doi.org/10.1111/ejss.12673>, 2018.
- 1360 Zádorová, T., Penížek, V., Šefrna, L., Drábek, O., Mihaljevič, M., Volf, Š. and Chuman, T.: Identification of Neolithic to
Modern erosion–sedimentation phases using geochemical approach in a loess covered sub-catchment of South Moravia, Czech
Republic, *Geoderma*, 195, 56-69, <https://doi.org/10.1016/j.geoderma.2012.11.012>, 2013.