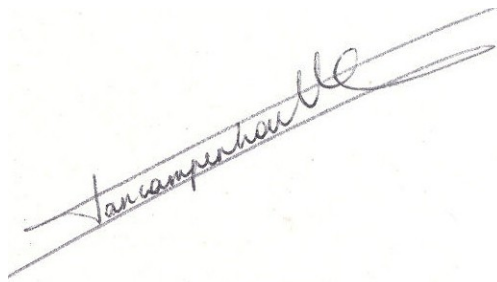


Dear Madam,

Dear Sir,

Kindly find our answers to the reviewer's technical corrections to soil-2019-78\_R1 below (added in green). We would like to thank the reviewer for his very detailed comments, allowing us to further improve the manuscript.

On behalf of the authors,



Prof. Karen Vancampenhout

### Comments to Authors

Abstract

- Line 20: Consider changing to “.....soil-plant nutrient...” - Adapted as suggested
- Line 22: Consider changing to “....and Mg in soil significantly...” - Adapted as suggested
- Line 23: Delete the word “Moreover” and start the sentence like: Soil carbon and... - Adapted as suggested
- Line 26: Suggest changing “is” to “was” - Adapted as suggested

Keywords. Please provide a maximum of 6 keywords. Consider changing “fertility gradient, foliar nutrients, garden zones” to “soil fertility gradient, foliar nutrient levels, home garden”. Delete keywords: “optimum nutrient levels, soil properties, symptomatic, non-symptomatic”. Consider adding “Ethiopian highland” - Adapted

### Introduction

- L38. Use abbreviation (SDG): “... goals (SDG) aim...” - Adapted as suggested
- L47. Reference for citation Bezuneh et al., 1967 is missing. – Redundant reference, removed
- L70; L93. Consider changing to “.....soil-plant nutrient interactions...” - Adapted as suggested
- L73. Suggest changing “may” to “might” - Adapted as suggested
- L75. “...(EXW) caused.....” Suggest moving abbreviation to “Enset Xanthomonas wilt (EXW) or ...” - Adapted as suggested and sentence adapted for clarity
- L76. Delete “also” - Adapted as suggested
- L86. Delete “.” after enset - Adapted as suggested
- L96. Delete “s” in the words “gardens” and “outfields” - Adapted as suggested

**L102-105.** Delete sentence: “In total, EXW prevalence..... for a subset of 40 farms.” since it corresponds to the M&M section, and the information is already included in that section. - Adapted as suggested

### Materials and Methods

**L132.** Did you want to cite “Cartledge, 1999”; instead of “Cartledge, 1995,”? check – Yes, reference updated

**L136-138.** “Fertilizer is rarely used in ..... (DAP) are the most common.” Suggest moving sentence onwards, at the end of the paragraph. “..... in 2016-2017). Fertilizer is rarely..... ” - Adapted as suggested

**L161.** Suggest changing “gardens” to “enset gardens” - Adapted as suggested

**L170.** How was the subsample of 40 farms out of the 121+83+72 selected? In the 40 selected farms, how many gardens are currently symptomatic, symptomatic in the past five years and had no symptoms? Enter the numbers. - Information added to the text.

Are these enset gardens evenly distributed among the three altitude zones? Clarify in text A reference was added to supplementary table St<sub>3</sub> where this information is provided.

**L203.** Consider changing to “.....and P<sub>av</sub> in soil were...”. Consider adding “Al<sub>av</sub>” - Adapted

**L207.** Consider changing to “.....each ground leaf sample.....” - Adapted as suggested

**L209-210.** “Soil texture was determined by ..... ; ISRIC, 2002).” Suggest moving sentence back to the beginning of the paragraph. - Adapted as suggested

### Results

**L230.** Suggest changing “Multivariate analysis of variability between farms” to “Variability of soil properties between farms” - Adapted as suggested

**L231.** Suggest changing “data” to “dataset” - Adapted as suggested

**Figure 3.** Enter the number of farms for each shape and colour on lines 244-246. - Adapted as suggested. Increase the size of the shapes in figure 3b. – The size of the symbols was chosen so they would not overlap. Hence, as the resolution of the figure permits zooming in, we prefer to keep the symbol size as is.

**L265.** Suggest changing “Gradients” to “Variation” - Adapted as suggested

**L310.** Delete sentence “In line with the significantly higher scores on the PC1 axis,” and start the sentence like: Currently symptomatic gardens..... - Adapted as suggested

### Discussion

**L337.** Suggest changing “agro-ecology” to “agro-ecological zones” - Adapted as suggested

**L349.** ... “and strongly linked to TOC levels (figure 3)”. This link cannot be inferred from figure, I recommend removing; and might add: “.... reflecting the paramount influence of intra-farm management on soil.....” - the sentence has been rephrased and reference to figure 3 was removed.

**L359.** There is a typo in Eliyas - Corrected as suggested

**L390-391.** References for citations Baker and Pilbeam, 2007, Hiltunen and White, 2002 does not appear in the reference list. References were added

**L425.** Suggest changing “nutrient levels” to “soil nutrient levels” - Adapted as suggested

### References

**L491.** “Agrios, G.N.....” is not cited in the text Double-check other references for any inconsistency. – Crosschecked and removed

Citation groups should be listed either first alphabetically, then chronologically, or vice versa. - Updated as suggested

## Altitude and management affect soil fertility, leaf nutrient status and *Xanthomonas* wilt prevalence in enset gardens

Sabura Shara<sup>1,2</sup>, Rony Swennen<sup>3,7</sup>, Jozef Deckers<sup>1</sup>, Fantahun Weldesenbet<sup>4</sup>, Laura Vercammen<sup>1</sup>, Fassil Eshetu<sup>2</sup>, Feleke

5 Woldeyes<sup>5</sup>, Guy Blomme<sup>6</sup>, Roel Merckx<sup>1</sup> and Karen Vancampenhout<sup>1</sup>

<sup>1</sup>KU Leuven, Dept. of Earth and Environmental Sciences, Geel and Leuven, Belgium

<sup>2</sup>Arba Minch University, College of Agricultural Sciences, Arba Minch, Ethiopia

<sup>3</sup>KU Leuven, Dept. of Biosystems, Leuven, Belgium

<sup>4</sup>Ethiopian Biotechnology Institute, Addis Ababa, Ethiopia

10 <sup>5</sup>Ethiopian Biodiversity Institute, Addis Ababa, Ethiopia

<sup>6</sup>Bioversity International, c/o ILRI, Addis Ababa, Ethiopia

<sup>7</sup>International Institute of Tropical Agriculture, Arusha, Tanzania

**Correspondence to:** Karen Vancampenhout (karenavcampenhout@kuleuven.be)

Deleted:

Deleted: <sup>8</sup>

### 15 Abstract

Enset (*Ensete ventricosum*) is a productive, drought-tolerant and multipurpose food security crop grown in the densely populated Ethiopian highlands. It is a so-called 'orphan crop' and its production suffers from a lack of information on proper soil fertility management and its interaction with bacterial wilt disease, caused by the pathogen *Xanthomonas campestris* pv. *musacearum*. The aim of this study was therefore to assess soil-plant nutrient variation within enset home gardens at three altitudes (ranging from 2000-3000 masl) in the Gamo highlands and investigate whether this variation affects disease prevalence. Altitude in the rift valley covaries with soil leaching, and plant available P, Ca and Mg in soils significantly raised with decreasing altitude. Soil carbon and most nutrients reached very high levels in the gardens, whereas the more distant outfields were severely nutrient deprived. Differences in management intensity within the garden caused soil pH, conductivity, total organic carbon, total N, and available P, K, Ca, Mg, Mn and Fe levels to significantly decline with distance from the house, yet this decrease in soil nutrients was not mirrored in a response of foliar nutrient content except for N. Hence, over-fertilization is likely and establishing evidence-based nutrient recommendations for enset would benefit soil quality and productivity both in the gardens as in the outfields. Disease prevalence was high in the study area, with one third of the farms affected in the recent past. Although more experimental work is needed to exclude confounding factors, our data indicate that effects of altitude, P-fertilization, micronutrients and K-Ca-Mg balance are promising avenues for further investigation into

30 *Xanthomonas* wilt disease susceptibility.

**Keywords:** *Ensete ventricosum*, soil fertility gradient, foliar nutrient levels, home gardens, Ethiopia, *Xanthomonas* wilt.

Deleted: <sup>8</sup>Bioversity International, Leuven, Belgium

Deleted: -

Deleted: Moreover, s

Deleted: is

Deleted: s

Deleted: garden zones

Deleted: , optimum nutrient levels, soil properties, symptomatic, non-symptomatic

## 45 1. Introduction

The global sustainable development goals (SDG) aim for zero hunger and stress the urgency of combatting climate change impacts on agriculture (SDG 2 and 13, Mariño and Banga, 2016; Rosegrant et al., 2003). Indigenous crops with tolerance to marginal conditions and resilience to climatic stress are therefore regarded as an increasingly important avenue for achieving food security and agro-ecosystem resilience in future tropical climate conditions (Alleman et al., 2004; Nayar, 2014; Renard and Tilman, 2019). A large discrepancy exists globally between the potential and the current use of such crops, which is partly attributed to limited international scientific attention and investments (Manners and van Etten, 2018; Naylor et al., 2004). One of these so-called ‘orphan crops’ is enset or ‘false banana’ (*Ensete* 55 *ventricosum* (Welw.) Cheesman).

Deleted: Manners and van Etten, 2018

Enset is a perennial multipurpose crop grown for food, feed, fibre and medicine (Brandt et al., 1997; Nurfeta et al., 2008; Tesfaye and Lüdders, 2003). It is one of the oldest cultivated plants in Ethiopia (Brandt et al., 1997), feeding about 20 million people (Brandt et al., 1997; Merga et al., 2019; Yemataw et al., 2014). Unlike other plants from the banana family, enset takes five to seven years to mature, performs best from 2000 to 2750 masl (Brandt et al., 1997) and is not grown for fruit bunches. Instead, the processed pseudo-stem and corm are consumed and leaves are fed to the cattle (Andeta et al., 2018; 60 Atlabachew and Chandravanshi, 2008; Tsegaye and Struik, 2002). Nicknamed the ‘tree against hunger’, enset can withstand prolonged periods of moisture stress (Brandt et al., 1997; Quimio and Tezera, 1996) 65 and the food yield per ha is higher than any other crop cultivated in Ethiopia, with the fresh weight of the fermented product ranging from 19-33 t/ha/year (Tsegaye and Struik, 2001). The dense leaf canopy moreover is an asset in reducing soil erosion and in sequestering carbon (Brandt et al., 1997; Lal, 2003; Tamire and Argaw, 2015). Despite their potential for increasing agricultural resilience in future climates, enset farming systems remain under-researched, leaving issues in soil fertility management and disease 70 control largely unresolved (Borrel et al., 2019).

Deleted: Bezuneh et al., 1967;

Deleted: Andeta et al., 2018

75 Enset typically grows in gardens on weathered tropical soils, and animal manure and compost from household refuse are used as soil amendments (Elias et al., 1998; Tamire and Argaw, 2015; Tsgaye and Struik, 2002). However, the supply of these organic inputs is limited and mainly acquired from free-ranging cattle, which puts an additional strain of overgrazing on the already degraded communal lands (Amede and Taboge, 2007; Assefa and Bork, 2017; [Elias et al., 1998](#); Garedeew and Ayiza, 2018). Hence, the optimal use of scarce nutrient resources is vital, yet there are no generally accepted recommendations to the enset farmers in the region. Moreover, information is scanty on how current management has affected soil fertility in existing enset farms. We therefore advocate that soil-plant nutrient interactions should be studied on-farm first, as to better align agronomical research with farmers' practices. Moreover, given the considerable ecological amplitude of enset, we hypothesize that these interactions **might** change with altitude.

Deleted: , Elias et al., 1998

Deleted: -

Deleted: ay

Enset Xanthomonas wilt ([EXW](#)), a bacterial wilting disease caused by *Xanthomonas campestris* pv. *musacearum* (Xcm), causes significant damage to enset gardens (Garedeew and Ayiza, 2018; Yemataw et al., 2017; Yirgou and Bradbury, 1968). It can cause yield losses up to 100% (Yemataw et al., 2016) and all cultivated varieties are susceptible (Merga et al., 2019), albeit some variation in tolerance occurs (Handoro and Michael, 2007; Welde-Michael et al., 2008a; Wolde et al., 2016). Basic phytosanitary practices involve the removal of diseased plants, disinfection of farm tools, and use of clean planting material (Tadesse et al., 2003; Welde-Michael et al., 2008b). Yet without access to disease-free plantlets, these measures have little effect in curbing the disease and alternative disease control strategies need to be established (Negash et al., 2000; Welde-Michael et al., 2008a; Welde-Michael et al., 2008b; Wolde et al., 2016). Recent studies in banana indicate a promising link between soil fertility management, plant nutrition and bacterial wilt incidence (Atim et al., 2013; Mburu et al., 2016) but this avenue remains to be explored for enset ([Huber et al., 2012](#); Huber and Graham, 1999; Huber and Haneklaus, 2007). We therefore hypothesize that an insight into soil-plant and plant-pathogen interactions at different altitudes might yield a complementing path for EXW control.

Deleted: or

Deleted: (EXW)

Deleted: also

Deleted: .

Deleted: ; Huber et al., 2012

110 Using an on-farm observational approach, this study therefore aims to increase the knowledge base  
required to attain the full potential of this ‘orphan crop’ and to improve food security and livelihood of  
enset dependent farm households, namely by assessing soil-plant nutrient interactions in typical enset  
115 gardens across different altitudes. We also compared soil properties within the garden (inner and outer  
garden) and between the garden and the surrounding fields (outfield). Furthermore, we related the  
observed variation in soil nutrients to plant nutrition by comparing soil nutrient levels to leaf nutrient  
status. Next, we surveyed prevalence and distribution of EXW symptomatic enset gardens and related  
the distribution of symptomatic gardens to altitude, soil properties and leaf nutrient contents. The Gamo  
120 highlands were chosen as a particularly relevant study area, as they have a long history of enset  
cultivation (Cartledge, 1999; Olmstead, 1975) and EXW is common. Moreover, local altitude gradients  
represent much of the agro-ecological diversity found in the Ethiopian rift area.

Deleted: -

Deleted: s

Deleted: s

Deleted: s

Deleted: In total, EXW prevalence and altitude were recorded in 276 smallholder enset gardens, selected between 2000-3000 masl, which corresponds to the main altitudinal enset belt in the Ethiopian highlands. Soil and leaf nutrients were assessed for a subset of 40 farms.

## 2. Materials and methods

### 125 2.1 Study area

The study was carried out in the Chencha catchment of the Gamo Highlands in Southern Nations,  
Nationalities and Peoples’ regional state of Ethiopia (between 6°05’N-6°35’N and 37°30’E-37°45’E).  
The area rises up from the base of Lake Abaya at 1100-3250 masl over a distance of 20 km (Assefa and  
130 Bork, 2017; Coltorti et al., 2019). Located in the western part of the southern Ethiopian rift valley  
escarpment, this landscape is characterized by flat plateaus bordered by steep slopes and dissected by  
concave valleys and gullies due to erosion (Coltorti et al., 2019). The parent material is mainly made up  
of continental flood basalts, buried under thick ignimbrites, rhyolites and trachytic flows comprising of  
lava flows, pyroclastic and lacustrine deposits (Ayalew et al., 2002; Tefera et al., 1996). Dominant soil  
135 types are reddish, deeply weathered Nitisols and Luvisols (Coltorti et al., 2019; [IUSS Working Group  
WRB, 2015](#)).

Deleted: IUSS Working Group WRB, 2015;

150 The local climate is strongly influenced by the complex terrain and mainly associated with altitudinal gradients (Assefa and Bork, 2017; Berhanu et al., 2013; Jury, 2014; Minda et al., 2018). Mean annual temperature ranges between 23 °C and 14 °C and the mean annual rainfall between 750 mm and 1700 mm, in the lowlands and highlands respectively. On the basis of local agro-ecological zonation, four climate zones were defined. These were ‘kolla’ (semi-arid), below 1500 masl; ‘woyna dega’ (sub-humid), between 1500 - 2300 masl; ‘dega’ (humid), between 2300 - 3000 masl, and ‘wurch (frost), a cold alpine zone above 3000 masl (Cartledge, 1999).

155 In the study area, enset is grown in traditional home gardens surrounding the house (figure 1). Each garden typically comprises a multitude of enset varieties or landraces that are unevenly aged and commonly intercropped with coffee, vegetables, pulses, maize, trees, bamboo or sugar cane in complex patterns and associations (Cartledge, 1999, Tesfaye and Lüdders, 2003; Yemataw et al., 2014). Plantlets are multiplied locally and young plants are densely planted predominantly at the outer rim of the garden. Plants are transplanted several times and moved wider apart and closer to the house as they mature, yet practices vary considerably for different varieties and between farms. Enset gardens are fertilized with animal manure and composted plant and household waste. The amount of amendments that is applied varies considerably between gardens, depending on financial resources and the amount of land and cattle owned by the farmer. Within the garden, plants near the house (inner garden) receive inputs almost constantly, while plants farther away from the house (outer garden) receive less inputs. A typical amount for the outer garden would be a bamboo basket of ca. 10 kg of composted plant waste and cattle manure per 1-3 enset plants per year (own interviews, performed in 276 visited farms in 2016-2017). Fertilizer is rarely used in gardens yet common in the outfields that surround the gardens and are used for arable cropping. Urea and diammonium phosphate (DAP) are most common.

160

165

170

Deleted: 5

Moved down [1]: Fertilizer is rarely used in gardens yet common in the outfields that surround the gardens and are used for arable cropping. Urea and diammonium phosphate (DAP) are most common.

Moved (insertion) [1]

175



Figure 1. (A) Typical enset-based farm in the Gamo highlands, surrounding a traditional hut. (B) Illustration of the different farm zones: the area closest to the house is called the inner garden (IG) and receives more organic inputs while the remaining part of enset garden (outer garden - OG) receives less organic inputs. The garden is often surrounded by a plot devoted for cultivation of annuals, that is fertilized mainly with chemical fertilizer (outfield - OF). (C) Schematic illustration of the spatial arrangement of enset gardens in a landscape. In denser populated areas, gardens are closer together and may not have outfields.

## 2.2 Sampling and data collection

Based on reconnaissance field visits and discussions with farmers, the larger catchment was divided into three altitude zones: higher (2600 – 3000 masl), middle (2300 – 2600 masl) and lower (2000-2300 masl). In these higher, middle and lower altitude zones, **enset** gardens were randomly chosen (121, 83 and 72 respectively). Each garden was recorded as “symptomatic” (EXW symptoms present) or “non-symptomatic” (no EXW symptoms observed) and the altitude was noted. Symptoms attributed to EXW were leaf wilting, leaf yellowing and slimy yellow bacterial ooze inside the petiole and leaf sheath tissues (figure 2). The observations were made between June 2016 and March 2017. Based on interviews with



the farmer, the presence or absence of symptomatic plants in the previous five years was also registered. It was not possible to accurately assess the number or location of affected plants in the garden, as farmers commonly uproot and remove symptomatic plants and do not keep records.

Soil samples were acquired for a subset of 40 farms. ~~The subset was selected to obtain similar amounts of farms per agro-ecological zone, (i.e. 14 in the higher, 15 in the middle and 11 in the lower zone) and per occurrence of EXW symptoms (i.e. 13 farms with symptomatic onset at the time of sampling, 13 farms with no symptomatic onset at the time of sampling but symptomatic plants were present in the last five years, and 14 farms with no symptomatic onset in the last 5 years; supplementary table St<sub>3</sub>).~~ To address intra as well as inter-garden variability, each garden was divided into an inner garden (IG) and an outer garden (OG; figure 1). Further division of these zones was not opportune as the average size of an onset garden is about 0.13 ha. If present, the outfield (OF) zone of the farm surrounding the onset garden was also sampled (this was the case for 28 farms, see supplementary table St<sub>1</sub> for a summary). Four bulk soil samples were taken and combined into one composite bulk sample per farm zone. Sampling depth comprised the upper 25 cm of soil, where most of the onset cord roots are typically distributed (Blomme et al., 2008; Zewdie et al., 2008).

Finally, three sets of leaf samples were taken in order to (i) compare soil nutrient status to leaf nutrient concentrations, (ii) compare nutrient concentrations in leaves of symptomatic and non-symptomatic plants and (iii) document typical nutrient concentrations in onset leaves, as this information is currently not available in literature. Since no standard leaf sampling method is available for onset, the common method for banana was adapted (Martin-Prével, 1977): the central 10 cm of the whole lamina was collected on both sides of the midrib in the second fully open leaf. The first set was collected in the same gardens as the soil samples, if mature (5-7 years old) and non-symptomatic plants from the most common onset variety (locally named 'Maze' or 'Mazia'; onset varieties do not have standardized names) were present in the inner as well as the outer garden. This was the case for 19 of the 40 gardens in the subset (2 samples per garden, i.e. 38 samples in total). For the second set, leaf samples from 20 pairs of symptomatic and non-symptomatic plants, each pair belonging to the same garden and variety (total of

Deleted: ,

Formatted: English (UK), Subscript

40 samples) were sampled in 12 gardens. Finally, additional leaf samples of non-symptomatic plants were collected from a range of local varieties (locally named 'Maze or Mazia', 'Chamo', 'Checho', 'Falake', 'Geena', 'Katame', 'Katise', 'Kunka', 'Phello' and 'Sorghe'), to expand the dataset on non-symptomatic plants to 218 samples from 58 gardens (supplementary table St<sub>1</sub> provides a summary).

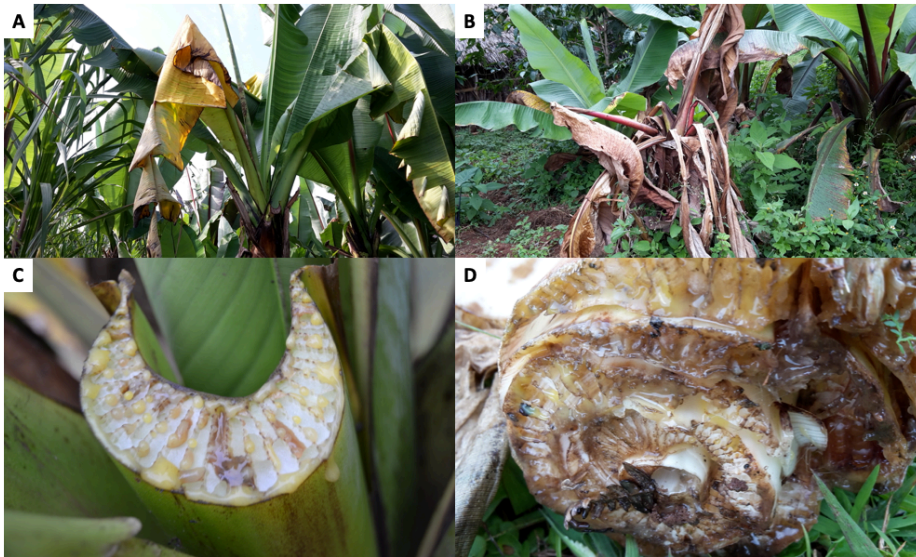


Figure 2. Visual symptoms attributed to infection by *Xanthomonas campestris* pv. *musacearum*: leaf wilting and yellowing (A), complete death of the aerial plant part (B) and yellow bacterial ooze emerging from the cut leaf petiole (C) and pseudo-stem (D)

### 2.3 Laboratory analysis

Soil texture was determined by Laser diffraction particle size analysis after pre-treatment with HCl and H<sub>2</sub>O<sub>2</sub> (LS 13320-Beckman Coulter; ISRIC, 2002). Soil pH and electrical conductivity (EC) were measured by using 1:5 soil to water ratio. Plant-available K<sub>av</sub>, Mg<sub>av</sub>, Ca<sub>av</sub>, Fe<sub>av</sub>, Al<sub>av</sub>, Mn<sub>av</sub> and P<sub>av</sub> were

Moved (insertion) [2]

Deleted: ¶

245 | extracted from soil samples by ammonium lactate solution (Egner et al., 1960) and analyzed by  
inductively coupled plasma optical emission spectroscopy (Winge et al., 1979). Soil and leaf total  
organic carbon and total nitrogen were measured by total combustion (Carlo Erba EA1110; Kirsten and  
Hesselius, 1983). Leaf samples were oven-dried at 60-70°C and finely ground. Approximately 50 mg of  
250 | each ground leaf sample was extracted by 1 ml HNO<sub>3</sub> in acid washed glass tube. Quantification of P, K,  
Ca, Mg, Zn, Cu, Fe, Mn, Al, Mo, Ni, and Co was made by inductively coupled plasma mass spectroscopy  
(Date and Gray, 1983).

**Moved up [2]:** Soil texture was determined by Laser diffraction particle size analysis after pre-treatment with HCl and H<sub>2</sub>O<sub>2</sub> (LS 13320-Beckman Coulter; ISRIC, 2002).

#### 2.4 Statistical analysis

Data analysis was executed using the JMP Pro 14 statistical software package (SAS Institute Inc., 2018).  
First, an explorative principal component analysis was computed on soil properties to obtain a first  
255 | appreciation of what explains most of the variation in the dataset and to identify interrelationships among  
the variables. Then, a one-way analysis of variance was used to determine variation in soil properties  
among altitudes and between symptomatic and non-symptomatic gardens. On-farm variability in soil  
properties among the garden zones was determined by a linear mixed model. A paired sample t-test was  
employed to determine the variation in plant nutrient levels within onset gardens and symptomatic and  
260 | non-symptomatic plants. Levene's test was used to test for heteroscedasticity. Shapiro-Wilk test and the  
Normal Quantile plot were used to check for normality assumptions. Data were log-transformed except  
for pH and EC. Multiple comparisons of significant means were determined using the Tukey-Kramer  
HSD post hoc test. When unequal variance was observed, Wilcoxon test was used with Steel-Dwass post  
hoc test. All means were separated at 5 % probability level. Disease prevalence (%) was computed as

265 | 
$$\frac{\text{Number of symptomatic gardens}}{\text{Total number of assessed gardens}} * 100 \%$$

### 3. Results

#### 270 | 3.1 Variability of soil properties between farms

**Deleted:** Multivariate analysis of

**Deleted:** v

Factor loadings of the first two principal components (PCs) explained 57 % of the variation of the dataset (figure 3). PC1 (39 % of the variation) showed positive loadings for most soil nutrients, soil carbon, and pH, whereas Al has negative loadings on this component (figure 3A). PC2 (18 % of the variation) has positive loadings for sand and silt and negative loadings for clay content. Hence, a higher score on PC1 reflects lower exchangeable soil acidity and higher soil nutrient status, while the score of a plot on PC2 reflects its soil texture. Garden scores (figure 3B) on PC1 are negatively correlated with farm altitude, yet this correlation is only marginally significant (Spearman rank correlation;  $p < 0.1$ ). Symptomatic gardens have significantly higher scores on PC1 as compared to non-symptomatic gardens (Kruskal-Wallis;  $p < 0.05$ ).

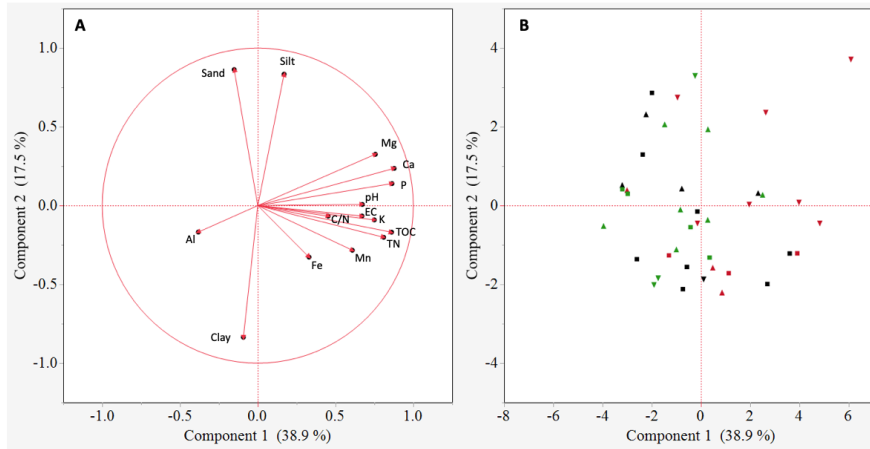


Figure 3. The distribution patterns of 40 onset gardens showing loadings plot (A) in relation to score plot (B) of soil properties (inner and outer garden data pooled) over two principal components. Shapes in B denote onset gardens at higher ( $\Delta$ ,  $n=14$ ), middle ( $\square$ ,  $n=15$ ) and lower ( $\nabla$ ,  $n=11$ ) altitudes, while colours represent gardens that were symptomatic at the time of sampling (red,  $n=13$ ), were not symptomatic at the time of sampling but had been symptomatic in the past five years (black,  $n=13$ ) and were not symptomatic in the past 5 years (green,  $n=14$ ).

Deleted: currently

Deleted: had

Deleted: s

### 3.2 Effect of altitude on soil properties of enset gardens

Soil texture in enset gardens did not differ with altitude and the dominant class of the soil texture was clay (table 1). In line with the PCA results, most soil chemical properties showed an increasing trend with decreasing altitude, yet this trend was significant only for  $P_{av}$  ( $p<0.05$ ),  $Ca_{av}$  ( $p<0.001$ ) and  $Mg_{av}$  ( $p<0.01$ ).  $P_{av}$  was 65 % higher at the lower than at the higher altitude. Levels of  $Ca_{av}$  and  $Mg_{av}$  were 25 % and 16 % larger at the lower than at the middle altitude. In contrast, significantly ( $p<0.001$ ) higher levels of  $Al_{av}$  were observed at the higher altitude compared to the middle and lower altitudes. Levels of  $Al_{av}$  at the higher altitude were 14 % and 17 % larger than that at the middle and at the lower altitudes, respectively.

Table 1. Variation in soil properties between enset gardens (IG and OG zones pooled) with respect to altitude (Higher: 2600-3000 masl, n=14; Middle: 2300-2600 masl, n=15; Lower: 2000-2300 masl, n=11). Soil nutrients refer to available fractions.

Altitude	Soil property	Max	Min	Mean±SD <sup>1</sup>	Soil property	Max	Min	Mean±SD <sup>1</sup>
Higher		10.9	1.5	6.1±2.7 <sup>ns</sup>		354.7	31.8	151.1±105.0 <sup>b</sup>
Middle	Sand (%)	11	0.4	3.6±3.1 <sup>ns</sup>	$P_{av}$ (mg/kg)	1072.5	34.8	390.4±316.9 <sup>ab</sup>
Lower		12	0.2	5.4±3.6 <sup>ns</sup>		1771.6	33.6	711.5±660.1 <sup>a</sup>
Higher		37.5	27.3	32.6±3.2 <sup>ns</sup>		3609.6	401.6	1726.5±860.2 <sup>ns</sup>
Middle	Silt (%)	41.7	25.4	30.8±4.2 <sup>ns</sup>	$K_{av}$ (mg/kg)	4012.4	686	1742.2±1078.6 <sup>ns</sup>
Lower		46.4	26.3	32.3±5.8 <sup>ns</sup>		4013.1	445.7	1625.8±1006.4 <sup>ns</sup>
Higher		71.2	53	61.5±5.6 <sup>ns</sup>		5678.7	1762.8	3818.3±1902.5 <sup>b</sup>
Middle	Clay (%)	73.4	31	66.4±5.0 <sup>ns</sup>	$Ca_{av}$ (mg/kg)	6982.7	1176.9	3569.5±1455.3 <sup>b</sup>
Lower		73.5	30	58.3±15.8 <sup>ns</sup>		7865.3	2477.2	5889.5±1902.5 <sup>a</sup>
Higher		7.6	5.1	6.3±0.8 <sup>ns</sup>		1127	529.8	819.2±194.7 <sup>ab</sup>
Middle	pH (H <sub>2</sub> O)	7.1	5.1	6.4±0.6 <sup>ns</sup>	$Mg_{av}$ (mg/kg)	1154.3	320.2	701.4±222.3 <sup>b</sup>
Lower		7.7	6	6.7±0.4 <sup>ns</sup>		1368.6	614.5	969.2±202.3 <sup>a</sup>
Higher		0.4	0.1	0.2±0.1 <sup>ns</sup>		881	283.4	552.1±216.0 <sup>ns</sup>
Middle	EC (ds/m)	0.5	0.1	0.3±0.1 <sup>ns</sup>	$Mn_{av}$ (mg/kg)	673.1	270.5	459.5±126.6 <sup>ns</sup>

Lower		0.5	0.1	0.3±0.1 <sup>ns</sup>		778.7	377.2	571.5±116.9 <sup>ns</sup>
Higher		4.4	1.9	3.3±0.7 <sup>ns</sup>		664.8	267.7	487.5±117.9 <sup>ns</sup>
Middle	TOC (%)	5.6	2.2	3.7±0.9 <sup>ns</sup>	Fe <sub>av</sub> (mg/kg)	627.1	252.1	457.9±134.2 <sup>ns</sup>
Lower		5.3	2.4	3.9±1.1 <sup>ns</sup>		573.8	194.6	404.9±96.3 <sup>ns</sup>
Higher		0.4	0.2	0.3±0.1 <sup>ns</sup>		793.1	439.5	560.1±95.8 <sup>a</sup>
Middle	TN (%)	0.5	0.2	0.4±0.1 <sup>ns</sup>	Al <sub>av</sub> (mg/kg)	647.4	417.9	419.4±112.5 <sup>b</sup>
Lower		0.5	0.2	0.4±0.1 <sup>ns</sup>		572.4	228.5	396.1±104.4 <sup>b</sup>

310 <sup>1</sup>Different letters within a column and for the same soil property indicate significant differences in mean soil property values between altitudinal zones (p<0.05). Soil properties that were not significantly different are marked 'ns'.

### 3.3 Variation in soil properties between inner gardens, outer gardens and outfields

Deleted: Gradients

315 Apart from soil texture, all measured soil properties change significantly (p<0.01) from the garden to the  
outfields (table 2) and pH, electrical conductivity (EC), TOC, TN, P<sub>av</sub>, K<sub>av</sub>, Ca<sub>av</sub>, K<sub>av</sub> and Mg<sub>av</sub> decrease  
significantly from the inner garden to the outer garden and from the outer garden to the outfields. The  
ratio C/N decreased significantly from the garden to the outfields and Mn<sub>av</sub> and Fe<sub>av</sub> were significantly  
higher in the inner garden as compared to the rest of the farm. Al<sub>av</sub> was significantly higher in the  
320 outfields as compared to the inner garden.

Table 2. Variation in soil properties (Mean ± SD) within a farm, showing average levels and standard deviations for the gardens (inner and outer garden) and the outfield (annually cropped plot surrounding the onset garden).

Soil properties	Inner garden (IG; n=40)	Outer garden (OG; n=40)	Outfield (OF; n=28)
Sand (%)	4.2±3.4 <sup>ns</sup>	6.2±5.6 <sup>ns</sup>	3.9±3.5 <sup>ns</sup>
Silt (%)	31.6±4.7 <sup>ns</sup>	32.2±6.0 <sup>ns</sup>	29.9±3.3 <sup>ns</sup>
Clay (%)	64.6±7.3 <sup>ns</sup>	63.3±8.5 <sup>ns</sup>	66.2±5.7 <sup>ns</sup>
pH	6.6 ± 0.7 <sup>a</sup>	6.3 ± 0.7 <sup>b</sup>	5.7 ± 0.6 <sup>c</sup>
EC (dS/m)	0.3 ± 0.2 <sup>a</sup>	0.2 ± 0.1 <sup>b</sup>	0.1 ± 0.1 <sup>c</sup>
TOC (%)	3.9 ± 1.2 <sup>a</sup>	3.2 ± 0.8 <sup>b</sup>	2.3± 0.4 <sup>c</sup>
TN (%)	0.4 ± 0.1 <sup>a</sup>	0.3± 0.1 <sup>b</sup>	0.2 ± 0.1 <sup>c</sup>

C:N	10.5±0.9 <sup>a</sup>	10.1±0.7 <sup>a</sup>	9.3±0.6 <sup>b</sup>
P <sub>av</sub> (mg/kg)	477.7± 543.9 <sup>a</sup>	305.1± 406.8 <sup>b</sup>	33.9± 43.5 <sup>c</sup>
K <sub>av</sub> (mg/kg)	2063.6± 1381.2 <sup>a</sup>	1314.8 ± 834.0 <sup>b</sup>	587.9± 385.9 <sup>c</sup>
Ca <sub>av</sub> (mg/kg)	4639.9± 2076.7 <sup>a</sup>	3816.6 ± 1745.7 <sup>b</sup>	2436.8± 1033.2 <sup>c</sup>
Mg <sub>av</sub> (mg/kg)	880.7± 303.8 <sup>a</sup>	744.7± 253.6 <sup>b</sup>	535.6 ± 230.3 <sup>c</sup>
Mn <sub>av</sub> (mg/kg)	564.9± 187.8 <sup>a</sup>	468.1± 176.3 <sup>b</sup>	412.9± 144.4 <sup>b</sup>
Fe <sub>av</sub> (mg/kg)	492.8± 153.8 <sup>a</sup>	421.6± 126.8 <sup>b</sup>	396.6± 92.1 <sup>b</sup>
Al <sub>av</sub> (mg/kg)	443.5± 149.6 <sup>b</sup>	486.9± 123.9 <sup>ab</sup>	524.3± 136.4 <sup>a</sup>

Different letters denote significant differences within a row. Non-significant differences are denoted ns (p<0.05).

### 3.4 Leaf nutrient status: variation within the garden

330 Despite the observed significant differences in soil nutrient levels between inner and outer garden, there was very little difference in leaf nutrient levels (table 3). Only leaf total N was significantly (p<0.01) higher (6%) in leaves from plants from the inner compared to the outer garden. Ranges for foliar macronutrient and Mo levels were relatively narrow, whereas larger ranges were observed for micro-nutrients (Mn, Fe, Zn, and Cu; supplementary table St<sub>2</sub>). When levels of N, Mn and Fe in both garden

335 zones were compared to optimal and deficiency ranges based on banana as a reference (supplementary figure Sf<sub>1</sub>), they generally fall within the optimum range, whereas levels of Ca, Mg, and Cu in both zones fall within the deficiency range. However, P, K and Zn levels in both zones were above the optimum.

Table 3. Leaf nutrient status of ‘Maze/Mazia’ enset plants in the inner and outer garden.

Nutrients	n	Inner garden (IG)	Outer garden (OG)
C (%)	19	44.2±1.1 <sup>ns</sup>	43.7±0.9 <sup>ns</sup>
N (%)	19	3.3±0.3 <sup>a</sup>	2.9±0.4 <sup>b</sup>
P (%)	19	0.4±0.1 <sup>ns</sup>	0.4±0.1 <sup>ns</sup>
K (%)	19	5.9±0.8 <sup>ns</sup>	5.9±0.8 <sup>ns</sup>
Ca (%)	19	0.6±0.2 <sup>ns</sup>	0.5±0.2 <sup>ns</sup>
Mg (%)	19	0.3±0.1 <sup>ns</sup>	0.3±0.0 <sup>ns</sup>
Mn (mg/kg)	18	233.8±134.7 <sup>ns</sup>	282.9±192.5 <sup>ns</sup>

Fe (mg/kg)	17	145.9±54.9 <sup>ns</sup>	154.0±75.0 <sup>ns</sup>
Al (mg/kg)	18	102.2±36.6 <sup>ns</sup>	94.5±27.9 <sup>ns</sup>
Cu (mg/kg)	19	6.3 ± 2.3 <sup>ns</sup>	5.8 ± 1.6 <sup>ns</sup>
Zn (mg/kg)	19	36.1 ± 37.5 <sup>ns</sup>	51.7 ± 71.9 <sup>ns</sup>
Mo (mg/kg)	18	1.8± 1.4 <sup>ns</sup>	2.2± 2.4 <sup>ns</sup>

340 Means followed by a different letter within a row are significantly different ( $p < 0.05$ ). Non-significant differences are denoted ns.

### 3.5 Prevalence and distribution of symptomatic onset gardens

345 Of the 276 onset gardens (including the 40 gardens in which soil properties were studied), 60 gardens (22 %) were currently symptomatic, whereas 96 gardens (35 %) had disease symptoms in the recent past (table 4). Disease prevalence increased with decreasing altitude irrespective of time periods. At present, the number of symptomatic gardens in the middle and lower altitudes was 2.6 to 3.6-fold higher than in the higher altitude. Moreover, in the 40 onset gardens where soils were sampled, a similar trend of disease  
350 prevalence with altitude was observed (supplementary table St<sub>3</sub>).

Table 4. Prevalence of EXW and the altitudinal distribution of symptomatic onset gardens (n=276) in the Chencha catchment, Gamo highlands.

Altitude	N <sup>o</sup> of assessed gardens	N <sup>o</sup> of symptomatic gardens		Prevalence (%)	
		Present	Past 5 years	Present	Past 5 years
Higher	121	12	26	9.9	21.5
Middle	83	22	30	26.5	40.9
Lower	72	26	36	36.1	50.0
Overall	276	60	96	21.7	34.8

355

### 3.6 Association between of soil and leaf nutrients vs disease prevalence

360 ~~Currently symptomatic gardens had significantly ( $p < 0.05$ ) higher levels of  $P_{av}$  and  $C_{av}$  compared to non-symptomatic gardens (Table 5). The other nutrients and texture could not be linked to the presence or absence of EXW symptoms when all altitudes were pooled. When the gardens of the lower altitude~~

**Deleted:** In line with the significantly higher scores on the PC1 axis,

**Deleted:** c



365 zone (where the incidence is highest) are analyzed separately, currently symptomatic gardens have significantly ( $p<0.05$ ) higher pH,  $P_{av}$ ,  $K_{av}$ , and  $Ca_{av}$  levels compared to non-symptomatic gardens (supplementary table St4-6). When the last five years were considered, TOC and TN were also significantly ( $p<0.05$ ) higher for symptomatic than for non-symptomatic gardens (data not shown).

370 Table 5. Comparison of soil properties between symptomatic and non-symptomatic onset gardens (n=40) from the Chencha catchment, Gamo highlands.

Soil properties	Symptomatic gardens (n=14)	Non-symptomatic gardens (n=26)
Sand (%)	3.9±3.2 <sup>ns</sup>	4.9±3.5 <sup>ns</sup>
Silt (%)	31.2±5.2 <sup>ns</sup>	32.0±4.0 <sup>ns</sup>
Clay (%)	58.3±16.8 <sup>ns</sup>	57.3±16.0 <sup>ns</sup>
pH	6.7±0.5 <sup>ns</sup>	6.3±0.7 <sup>ns</sup>
EC (dS/m)	0.3±0.2 <sup>ns</sup>	0.3±0.1 <sup>ns</sup>
TOC (%)	3.9±0.9 <sup>ns</sup>	3.4±0.8 <sup>ns</sup>
TN (%)	0.4±0.1 <sup>ns</sup>	0.3±0.1 <sup>ns</sup>
C:N	10.5 ±0.4 <sup>ns</sup>	10.2±0.7 <sup>ns</sup>
$P_{av}$ (mg/kg)	642.3±612.3 <sup>a</sup>	270.6±272.5 <sup>b</sup>
$K_{av}$ (mg/kg)	2037.8±1023.2 <sup>ns</sup>	1521.4±905.6 <sup>ns</sup>
$Ca_{av}$ (mg/kg)	5088.8±1918.6 <sup>a</sup>	3813.9±1390.8 <sup>b</sup>
$Mg_{av}$ (mg/kg)	881.3±258.4 <sup>ns</sup>	779.6±211.1 <sup>ns</sup>
$Mn_{av}$ (mg/kg)	547.5±161.6 <sup>ns</sup>	501.7±165.9 <sup>ns</sup>
$Fe_{av}$ (mg/kg)	430.5±114.2 <sup>ns</sup>	470.0±126.8 <sup>ns</sup>
$Al_{av}$ (mg/kg)	417.8±103.5 <sup>ns</sup>	487.9±126.2 <sup>ns</sup>

Different letters denote significant differences within a row. Non-significant differences are denoted ns ( $p<0.05$ ).

375 Comparison of foliar nutrient levels between symptomatic and non-symptomatic plants was significant ( $p<0.05$ ) only for K and Cu (table 6). K and Cu were higher in symptomatic and non-symptomatic plants, respectively.

380 Table 6. Pairwise comparison of leaf nutrient status (Mean  $\pm$  SD) between symptomatic and non-symptomatic plants, each the same pairs of 10 local varieties ('Chamo', 'Checho', 'Falake', 'Geena', 'Katame', 'Katise', 'Kunka', 'Maze', 'Phello' and 'Sorghe').

Leaf nutrient	n	Symptomatic plants	Non-symptomatic plants
C (%)	20	44.6 $\pm$ 0.8 <sup>ns</sup>	44.5 $\pm$ 0.8 <sup>ns</sup>
N (%)	20	3.2 $\pm$ 0.5 <sup>ns</sup>	3.2 $\pm$ 0.5 <sup>ns</sup>
P (%)	20	0.4 $\pm$ 0.1 <sup>ns</sup>	0.4 $\pm$ 0.1 <sup>ns</sup>
K (%)	19	4.6 $\pm$ 0.4 <sup>b</sup>	4.9 $\pm$ 0.5 <sup>a</sup>
Ca (%)	20	0.5 $\pm$ 0.2 <sup>ns</sup>	0.5 $\pm$ 0.2 <sup>ns</sup>
Mg (%)	19	0.3 $\pm$ 0.1 <sup>ns</sup>	0.3 $\pm$ 0.0 <sup>ns</sup>
Mn (mg/kg)	19	232.2 $\pm$ 261.7 <sup>ns</sup>	203.4 $\pm$ 178.6 <sup>ns</sup>
Fe (mg/kg)	19	125.3 $\pm$ 47.5 <sup>ns</sup>	125.4 $\pm$ 36.4 <sup>ns</sup>
Al (mg/kg)	19	93.8 $\pm$ 35.7 <sup>ns</sup>	88.2 $\pm$ 25.2 <sup>ns</sup>
Cu (mg/kg)	19	6.0 $\pm$ 1.2 <sup>a</sup>	5.4 $\pm$ 1.7 <sup>b</sup>
Zn (mg/kg)	19	15.7 $\pm$ 3.8 <sup>ns</sup>	16.2 $\pm$ 5.1 <sup>ns</sup>
Mo (mg/kg)	19	1.8 $\pm$ 1.4 <sup>ns</sup>	1.8 $\pm$ 1.5 <sup>ns</sup>
Co (mg/kg)	20	0.1 $\pm$ 0.0 <sup>ns</sup>	0.1 $\pm$ 0.0 <sup>ns</sup>
Ni (mg/kg)	19	1.3 $\pm$ 0.5 <sup>ns</sup>	1.4 $\pm$ 0.6 <sup>ns</sup>

Different letters denote significant differences within a row. Non-significant differences are denoted ns (p<0.05).

385

#### 4. Discussion

##### 4.1 Soil fertility in relation to agro-ecological zones and management practices

390 Agro-ecological zones in the study area were mainly determined by altitude, which also affects temperature and rainfall, as precipitation decreases with decreasing altitude in tropical highlands (Berhanu et al., 2013; Cartledge, 1999; Minda et al., 2018). In rift situations, the most weathered soils typically occur highest in the landscape, which is evidenced in the elevated Al<sub>av</sub> content and decreased soil bases (Ca<sub>av</sub> and Mg<sub>av</sub>; figure 3, table 1). Acid and Al rich Nitisols tend to strongly fix P, which is in

Deleted: y

Deleted: Berhanu et al., 2013;

line with lower  $P_{av}$  levels at higher altitudes. Slower decomposition of soil organic matter, erosion and land degradation can also contribute to this effect (Elias, 2017; Shigaki et al., 2007; Vancampenhout et al., 2006). Soil texture typically varies with localized differences in Si content of the volcanic parent material, which explains the lack of correlation with altitude or distance from the garden. For most of the measured soil properties however, intra-farm variability was more prominent than inter-farm variability and nutrient levels covaried with TOC levels (table 2), reflecting the paramount influence of management on soil properties in the study area. Continuous application of manure and organic waste was common within the gardens but not in the outfields and decreases with distance from the house. This explains the clear intra-garden soil fertility gradient (Amede and Taboge, 2007; Elias et al., 1998; Hailelassie et al., 2006; Tensaye et al., 1998) and the sharp contrast between gardens and outfields. Similar observations have been made for banana in Kenyan smallholder farms (Okumu et al., 2011). The pH measured in the enset gardens is comparable to the optimum range suggested for enset, i.e. 5.6-7.3 (Brandt et al., 1997) and is significantly higher than in the outfields, most likely due to the liming effect of organic resources such as manure, compost and ashes applied in the gardens (Abdala et al., 2015; Agbede and Adekiya, 2012; Mokolobate and Haynes, 2002; Whalen et al., 2000). On the other hand, the outfields only receive urea and DAP, which can lower soil pH (Elias et al., 1998; Zelleke et al., 2010). Levels of TOC, TN,  $P_{av}$ ,  $K_{av}$ ,  $Ca_{av}$ ,  $Mg_{av}$ ,  $Mn_{av}$  and  $Fe_{av}$  in the enset gardens were much higher than typical values reported in literature (Ayenew et al., 2018; Elias, 2017; Hengl et al., 2017; Mamo et al., 2014; Mamo et al., 2002; Moges and Holden, 2008; Nabhan et al., 1999; Roy et al., 2006) and in banana farms (Ndabamenye et al., 2013; Nyombi et al., 2010). For soil nutrients, recommended levels are not available for enset gardens, although farmers typically expect an increase in growth with higher organic inputs (Amede and Taboge, 2007). A shift from free-ranging to on-stable cattle due to increasing population densities is a trend observed in our study area, and may amplify the flux of nutrients to the inner gardens (own interviews).

**Deleted:** strongly linked to

**Deleted:** figure 3

**Deleted:** (table 2)

**Deleted:** b

**Deleted:** y

Applying more organic inputs closer to the house obviously is more practical, but also serves a purpose. Enset varieties grown for the fermented product of the pseudo-stem are transplanted to the fertile inner zone. As a result, they grow vigorously and produce a higher pseudo-stem and corm biomass. On the

430 other hand, varieties meant for eating the cooked corm remain in the outer, less fertile zone and receive  
manure only during their earlier growth stages, as slower growth is said to improve the texture and taste  
of the cooked product (own interviews). Nevertheless, in our study area, the high nutrient levels suggest  
that more inputs than required are applied in the gardens, while the outfields suffer from a lack of soil  
carbon and nutrients (table 2). This hypothesis is supported by the lack of variation observed in foliar  
435 nutrient levels between the inner and outer garden zone (table 3), despite significant differences in soil  
nutrient status: if an increase in soil nutrients is not mirrored in an increase in foliar nutrients, it can be  
considered a sign of inefficient plant nutrient uptake and therefore non-optimal soil nutrient management.  
Hence, agronomical research to determine optimal enset nutrient requirements is needed to optimize  
input use in the infields and curb soil degradation as well as low arable yields in the outfields.

440 Foliar N, P and K in our study were comparable to earlier reports by Uloro and Mengel (1994) for enset  
grown with inorganic NPK. We further compared our leaf nutrient contents (supplementary figure Sf<sub>i</sub>)  
to available literature for enset and standards in banana (table 7). Our results were largely comparable to  
Nurfeta et al. (2008) but P and K levels were higher for enset than banana (Lahav and Turner, 1989;  
445 Reuter and Robinson, 1997; Turner and Barkus, 1981). Considering standards in banana, our results  
were comparable for N, Mn, and Fe, above optimum for P, K and deficient for Ca, Mg and micronutrients  
such as Cu and Zn. Our results suggest a potential additional drawback of over-fertilization, as low Ca  
and Mg could be linked to a reduced absorption caused by high K levels (Baker and Pilbeam, 2007,  
Hiltunen and White, 2002; Lahav and Turner, 1989) and deficiency in micronutrients may be induced  
450 by excessive rates of P (Huang et al., 2000; Singh et al., 1988; Soltangheisi et al., 2013). A comparison  
to reported enset leaf nutrients in literature confirms the high K and low Ca levels in our study area (table  
7). Nevertheless, these results need to be interpreted with caution, as optimal leaf sampling methods for  
enset leaves are not known and optimal enset nutrient levels may differ substantially from those reported  
for banana. Hence, dedicated research to infer optimal foliar nutrient status in enset would be an  
455 important scope for future agronomical research. Considering the complexity of establishing yield or  
crop performance for enset (Negash et al., 2013; Tsegaye and Struik, 2000 and 2001), research based on

Formatted: English (UK)

Deleted: Negash et al., 2013

foliar analysis will be especially important to complement the scanty long-term agronomical trials for this crop.

460 Table 7. Comparison of mean foliar nutrient levels in our study as against reported values for enset  
 (Mohammed et al., 2013; Nurfeta et al., 2008; Nurfeta et al., 2009) and banana (Reuter and Robinson,  
 1997; Turner and Barkus, 1981).

Deleted; Mohammed et al., 2013; Nurfeta et al., 2008

465

P(mg/kg)	K(mg/kg)	Ca(mg/kg)	Mg(mg/kg)	Mn(mg/kg)	Cu(mg/kg)	Zn(mg/kg)	Fe(mg/kg)	Reference
0.4	5.6	0.6	0.3	257.6	8.6	22.5	148.2	This study
0.4	5.3	0.9	0.3	484	10	17.4	552	Nurfeta et al., 2009
0.2	3.1	2.2	0.3	188	2.5	19.7	-	Mohammed et al., 2013
0.4	4.1	1.1	0.3	194	2.2	10.8	-	Nurfeta et al., 2008
0.2-0.3	3.1-4.0	0.8-1.2	0.3-0.46	100-2200	7-10	21-35	70-200	Reuter and Robinson, 1997 (banana)
0.2	3.3	0.8	0.4	1476.0	12.1	17.6	150	Turner and Barkus, 1981 (banana)

#### 4.2 Effects of altitude and nutrients on Xanthomonas wilt disease incidence

470 In our study area, Xanthomonas wilt incidence was high: over 1/3 of the visited farms had lost plants to  
 the disease in the last 5 years (table 4). As enset takes between 5-7 years to mature, these losses are an  
 important threat to food security in the area (own interviews). Lower lying areas had a significantly  
 higher prevalence of affected gardens, which is in line with results reported by Wolde et al. (2016) and  
 Zerfu et al. (2018) and can be typically attributed to faster disease progression in the warmer climate at  
 475 lower altitude (Berhanu et al., 2013; Cartledge, 1999). In contrast, Ocimati et al. (2019) did not find a  
 significant effect of altitude and temperature on Xanthomonas wilt spread in banana farms. However, as  
 enset is cultivated at higher altitudes than bananas, our results indicate that altitude may be a more  
 determining factor for enset.

480 The relation between plant nutrition and Xanthomonas wilt is typically more difficult to infer: when  
 plants are nutrient deficient, their susceptibility to diseases may increase (Graham, 1983; Thongbai et

al., 1993), yet an excessive amount of some nutrients has also been reported to have negative effects (Dordas, 2008; Huber and Graham, 1999). In our study area, a first complication is that both disease incidence and soil nutrients levels were highest at the lowest altitudes, so these factors seem confounded. Nevertheless, when assessing disease prevalence at the lower, most affected altitude only, soils of symptomatic farms still have significantly higher levels of certain nutrients. From our observations, two potential mechanisms on how nutrient levels may influence *Xanthomonas* susceptibility are in line with the data. First, excessive rates of P may interfere with micronutrient uptake (Huang et al., 2000; Singh et al., 1988; Soltangheisi et al., 2013) and micronutrient deficiencies have been shown to increase susceptibility to *Fusarium* wilt in banana (Hecht-Buchholz et al., 1998). In our study area, a significantly higher  $P_{av}$  was observed in the soils of symptomatic farms, while an imbalance in micronutrients is likely based on the leaf analysis reported (tables 3 and 7; supplementary figure Sf1). Nevertheless, as the effect of nutrients on a plant's response to disease is often species specific (Ghorbani et al., 2009; Spann et al., 2009), the role of micronutrients in enset is an important avenue for future research. Second, interferences in the uptake between K, Mg and Ca have been evidenced to influence plant health in banana (e.g. Atim et al., 2013; Freitas et al., 2015 and 2016). In our study, symptomatic gardens could be linked to increased levels of  $Ca_{av}$  in the soil of all 40 farms and also to both  $Ca_{av}$  and  $K_{av}$  in the subset of the lower altitudes (table 5, supplementary table St4-6). Leaf analysis indicates that plants in our study area had the highest K values reported and K content was significantly different in symptomatic plants, while Ca levels in the leaves were the lowest so far reported (table 6, table 7). The dynamics of those cations in the soil and plant should therefore be further researched in enset, especially in view of the observed over-fertilization with compost and manure.

An alternative explanation is that the organic composts used to fertilize the enset garden may be a source of inoculum for EXW and hence explain the correlation between certain soil nutrients and EXW incidence. Although no specific information is available for EXW, other *Xanthomonas* species have been reported to be heat-sensitive and have been easily eliminated during composting (Elorrieta et al., 2003; Mwebaze et al., 2006; Silva et al., 2012; Wichuk et al., 2011).

Deleted: 7

## 5. Conclusion

515 In this study, we conducted a reconnaissance observational study into soil fertility and EXW prevalence  
in enset gardens in the Gamo highlands. Our results indicate that soil fertility was strongly influenced by  
altitude as well as management, with sharp contrasts within enset gardens, and between enset gardens  
and outfields. Gardens in the study area show very high levels for most nutrients, yet an increase in soil  
520 nutrients is not mirrored in a response of foliar nutrient content except for N. Hence, over-fertilization is  
likely and establishing evidence-based nutrient recommendations for enset would benefit soil quality  
and productivity both in the gardens as in the outfields. Disease prevalence was high in the study area,  
with one third of the farms affected in the recent past. Although more experimental work is needed to  
exclude confounding factors, our data indicate that effects of altitude, P-fertilisation, micronutrients and  
525 K-Ca-Mg balance are promising avenues for further investigation into EXW disease susceptibility.

**Author contributions.** K.V, R.S, F.Wo., J.D., G.B. and F.We. designed the observational setup, K.V.  
and R.M designed the soil and nutrient components of the research, R.S. designed the plant and disease  
related components. S.S. and L.V. collected and analyzed the data and S.S. compiled the manuscript,  
530 supervised by K.V., F.E and R.S. All authors contributed to the interpretation and discussion of the  
results.

**Competing interests.** The authors declare that they have no conflict of interest.

**Data availability:** DOI: <https://doi.org/10.25502/apce-ng55/d>

535 [CKAN link: http://data.iita.org/dataset/reconnaissance-study-on-ecological-niche-of-ensete-ventricosum](http://data.iita.org/dataset/reconnaissance-study-on-ecological-niche-of-ensete-ventricosum).

**Acknowledgements.** The authors greatly acknowledge Flemish Interuniversity Council for University  
Development Cooperation VLIR-UOS for funding this research (TEAM Project ‘ENSET’, grant number  
ZEIN 2015PR407). We thank the farmers of Chencha, who shared their experience. We want to extend  
our gratitude to Mathilde Vantghem and Ieben Broeckhoven for their help with the leaf sampling and

540 nutrient analysis, Alene Abeje and Azmera Walche for their help during field data gathering and to Luc  
Vancampenhout for language advise. The authors would like to thank lab technicians Lore Fondu and  
Kim Vekemans for their help in laboratory measurements. The authors thank all donors who supported  
this work also through their contributions to the CGIAR Fund (<http://www.cgiar.org/who-we-are/cgiar-fund/fund-donors-2/>), and in particular to the CGIAR Research Program Roots, Tubers and Bananas  
545 (RTB-CRP).

### References

- Abdala, D. B., da Silva, I. R., Vergütz, L., and Sparks, D. L.: Long-term manure application effects  
on phosphorus speciation, kinetics and distribution in highly weathered agricultural  
550 soils. *Chemosphere*, 119, 504-514, doi:10.1016/j.chemosphere.2014.07.029, 2015.
- Agbede, T. M., and Adekiya, A. O.: Effect of wood ash, poultry manure and NPK fertilizer on soil  
and leaf nutrient composition, growth and yield of okra (*Abelmoschus esculentus*). *Emirates  
Journal of Food and Agriculture*, 24, 314-321, 2012.
- 555 ~~Allemann, J., Laurie, S. M., Thiart, S., Vorster, H. J., and Bornman, C. H.: Sustainable production of  
root and tuber crops (potato, sweet potato, indigenous potato, cassava) in southern Africa. *South  
African Journal of Botany*, 70, 60-66, doi:10.1016/S0254-6299(15)30307-0, 2004.~~
- Amede, T., and Taboge, E.: Optimizing soil fertility gradients in the Enset (*Ensete ventricosum*)  
systems of the Ethiopian Highlands: Trade-offs and local innovations. In *Advances in Integrated  
Soil Fertility management in Sub-Saharan Africa: Challenges and Opportunities*, 289-297, 2007.
- 560 Andeta, A. F., Vandeweyer, D., Woldesenbet, F., Eshetu, F., Hailemichael, A., Woldeyes, S.,  
Crauwels, B, Lievens, J, Ceusters, K, Vancampenhout and Van Campenhout, L.: Fermentation

**Deleted:** Agrios, G. N.: *Plant pathology* (5<sup>th</sup> ed). Elsevier Academic Press, London, Pp. 952, 2005. [1](#)



- 565 of enset (*Ensete ventricosum*) in the Gamo highlands of Ethiopia: physicochemical and microbial community dynamics. *Food Microbiology*, 73, 342-350, doi:10.1016/j.fm.2018.02.011, 2018.
- Assefa, E., and Bork, H-R.: Indigenous resource management practices in the Gamo Highlands of Ethiopia: challenges and prospects for sustainable resource management. *Sustainability Science*, 12, 695-709, doi:10.1007/s11625-017-0468-7, 2017.
- 570 Atim, M., Beed, F., Tusiime, G., Tripathi, L., and van Asten, P.: High potassium, calcium, and nitrogen application reduce susceptibility to banana Xanthomonas wilt caused by *Xanthomonas campestris* pv. *musacearum*. *Plant Disease*, 97, 123-130, doi:10.1094/PDIS-07-12-0646-RE, 2013.
- Atlabachew, M., and Chandravanshi, B. S.: Levels of major, minor and trace elements in commercially available enset (*Ensete ventricosum* (Welw.), Cheesman) food products (kocho

- 575 and bulla) in Ethiopia. *Journal of Food Composition and Analysis*, 21, 545-552, doi: 10.1016/j.jfca.2008.05.001, 2008.
- Ayalew, D., Barbey, P., Marty, B., Reisberg, L., Yirgu, G., and Pik, R.: Source, genesis, and timing of giant ignimbrite deposits associated with Ethiopian continental flood basalts. *Geochimica et Cosmochimica Acta*, 66, 1429-1448, doi:10.1016/S0016-7037(01)00834-1, 2002.
- 580 Ayenew, B., Tadesse, A. M., Kibret, K., and Melese, A.: Phosphorus status and adsorption characteristics of acid soils from Cheha and Dinsho districts, southern highlands of Ethiopia. *Environmental Systems Research*, 7, 1-14, doi:10.1186/s40068-018-0121-1, 2018.
- Barker, A.V., and Pilbeam, D.J.: Handbook of plant nutrition, CRC Press, Taylor and Francis Group, p.613, 2007.
- 585 Berhanu, B., Melesse, A.M., and Seleshi, Y.: GIS-based hydrological zones and soil geodatabase of Ethiopia. *Catena*, 104, 21-31, doi:10.1016/j.catena.2012.12.007, 2013.
- Blomme, G., Sebuwufu, G., Addis, T., and Turyagyenda, L. F.: Relative performance of root and shoot development in enset and east African highland bananas. *African Crop Science Journal*, 16, 51-57, doi:10.4314/acsj.v16i1.54339, 2008.
- 590 Borrell, J. S., Biswas, M. K., Goodwin, M., Blomme, G., Schwarzacher, T., Heslop-Harrison, Wendawek, A. M., Berhanu, A., Kallow, S., Janssens, S., Molla, E. L., Davis, A. P., Woldeyes, F., Willis, K., Demissew, S., and Wilkin, P.: Enset in Ethiopia: a poorly characterized but resilient starch staple. *Annals of Botany*, XX, 1-20, doi:10.1093/aob/mcy214, 2019.
- 595 Brandt, S. A., Spring, A., Hiebsch, C., McCabe, J. T., Tabogie, E., Diro, M., and Tesfaye, S.: The tree against hunger. Enset-based agricultural systems in Ethiopia. Washington DC: American Association for the Advancement of Science, p. 56, 1997.
- Cartledge, D. M.: The management of *Ensete ventricosum* in the Gamo Highlands of southwest Ethiopia. *Culture and Agriculture*, 21, 35-38, doi:10.1525/cag.1999.21.1.35, 1999.

Formatted: Font color: Auto, Not Highlight

- Coltorti, M., Pieruccini, P., Arthur, K. J., Arthur, J., and Curtis, M.: Geomorphology, soils and  
600 palaeosols of the Chencha area (Gamo Gofa, southwestern Ethiopian highlands). *Journal of  
African Earth Sciences*, 151, 225-240, doi:10.1016/j.jafrearsci.2018.12.018, 2019.
- Date, A.R., and Gray, A.L.: Development progress in plasma source mass spectrometry:  
*Analyst*, 108, 159-165, doi:10.1039/AN9830800159, 1983.
- Dordas, C.: Role of nutrients in controlling plant diseases in sustainable agriculture. A  
605 review. *Agronomy for Sustainable Development*, 28, 33-46, doi:10.1051/agro:2007051, 2008.
- Egner, H., Riehm, H., and Domingo, W. R.: Investigations of the chemical soil analysis as a basis for  
the evaluation of nutrient status in soil. II. Chemical extraction methods for phosphorus and  
potassium determination. *K Lantbruks Högsk Ann*, 26, 199-215, 1960.
- Elias, E., Morse, S., and Belshaw, D. G. R.: Nitrogen and phosphorus balances of Kindo Koisha  
610 farms in southern Ethiopia. *Agriculture, Ecosystems and Environment*, 71, 93-113,  
doi:10.1016/S0167-8809(98)00134-0, 1998.
- Elias, E.: Characteristics of Nitisol profiles as affected by land use type and slope class in some  
Ethiopian highlands. *Environmental Systems Research*, 6, 1-20, doi:10.1186/s40068-017-0097-  
2, 2017.
- 615 Elorrieta, M. A., Suarez-Estrella, F., Lopez, M. J., Vargas-García, M. C., and Moreno, J.: Survival of  
phytopathogenic bacteria during waste composting. *Agriculture, Ecosystems and  
Environment*, 96, 141-146, doi:10.1016/S0167-8809(02)00170-6, 2003.
- Freitas, A. S., Pozza, E. A., Pozza, A. A. A., Oliveira, M. G. F., Silva, H. R., Rocha, H. S., and  
Galvão, L. R.: Impact of nutritional deficiency on Yellow Sigatoka of banana. *Australasian  
620 Plant Pathology*, 44, 583-590, 2015.
- Freitas, A. S., Pozza, E. A., Alves, M. C., Coelho, G., Rocha, H. S., and Pozza, A. A. A.: Spatial  
distribution of Yellow Sigatoka Leaf Spot correlated with soil fertility and plant  
nutrition. *Precision Agriculture*, 17, 93-107, 2016.

Deleted: a

- Garedew, B., and Ayiza, A.: Major Constraints of Enset (*Ensete ventricosum*) production and management in Masha district, southwest Ethiopia. *International Journal of Agricultural Research*, 13, 87-94, doi:10.3923/ijar.2018.87.94, 2018.
- 630 Ghorbani, R., Wilcockson, S., Koocheki, A., and Leifert, C.: Soil management for sustainable crop disease control: a review. In *Organic farming, pest control and remediation of soil pollutants*, Springer, Dordrecht, 177-201, 2009.
- Graham, R. D.: Effects of nutrient stress on the susceptibility of plants to disease with particular reference to the trace elements. In *Advances in botanical research*. Academic Press, 10, 221-276, doi:10.1016/S0065-2296(08)60261-X, 1983.
- 635 Hailelassie, A., Priess, J. A., Veldkamp, E., and Lesschen, J. P.: Smallholders' soil fertility management in the central highlands of Ethiopia: implications for nutrient stocks, balances and sustainability of agroecosystems. *Nutrient Cycling in Agroecosystems*, 75, 135-146, doi:10.1007/s10705-006-9017-y, 2006.
- 640 Handoro, F., and Michael, G. W.: Evaluation of enset clone meziya against enset bacterial wilt. In 8th African Crop Science Society Conference, El-Minia, Egypt, October 27-31, 887-890, 2007.
- Hecht-Buchholz, C., Borges-Pérez, A., Fernandez Falcon, M., and Borges, A. A.: Influence of zinc nutrition on Fusarium wilt of banana-an electron microscopic investigation. *Acta Horticulturae*, 490, 277-284, doi:10.17660/ActaHortic.1998.490.27, 1998.
- 645 Hengl, T., Leenaars, J. G. B., Shepherd, K. D., Walsh, M. G., Heuvelink, G. B. M., Mamo, T., Tilahun, H., Berkhout, E., Cooper, M., Fegraus, E., Wheeler, I., and Kwabena, N. A.: Soil nutrient maps of Sub-Saharan Africa: assessment of soil nutrient content at 250 m spatial resolution using machine learning. *Nutrient Cycling in Agroecosystems*, 109, 77-102, doi:10.1007/s10705-017-9870-x, 2017.
- 550 [Hiltunen, L. H., and White, J. G.: Cavity spot of carrot \(\*Daucus carota\*\). \*Annals of Applied Biology\*, 141, 201-223, doi.org/10.1111/j.1744-7348.2002.tb00213.x, 2002.](#)

**Deleted:** In II International Symposium on Banana: I International Symposium on Banana in the Subtropics

**Deleted:** 7

- 655 Huang, C., Barker, S. J., Langridge, P., Smith, F. W., and Graham, R. D.: Zinc deficiency up-regulates the expression of high-affinity phosphate transporter genes in both phosphate-sufficient and deficient barley roots. *Plant Physiology*, 124, 415-422, doi:10.1104/pp.124.1.415, 2000.
- Huber, D. M., and Graham, R. D.: The role of nutrition in crop resistance and tolerance to diseases. In 'Mineral nutrition of crops: fundamental mechanisms and implications. Food Product Press, New York, 169-204, 1999.
- 660 Huber, D. M., and Haneklaus, S.: Managing nutrition to control plant disease. *Landbauforschung Volkenröde*, 57, 313-322, 2007.
- Huber, D., Römheld, V., and Weinmann, M.: Relationship between nutrition, plant diseases and pests. In Marschner's mineral nutrition of higher plants, Academic Press, 283-298, doi:10.1016/B978-0-12-384905-2.00010-8, 2012.
- 665 ISRIC.: Procedures for soil analysis. 6th ed. Wageningen, the Netherlands, 2002.
- IUSS Working Group WRB. 2015. World Reference Base for Soil Resources 2014, update 2015: International soil classification system for naming soils and creating legends for soil maps. World Soil Resources Reports No. 106. 192. FAO, Rome.
- 670 Jury, M. R.: Southern Ethiopia rift valley lake fluctuations and climate. *Scientific Research and Essays*, 9, 794-805, doi:10.5897/SRE2014.6062, 2014.
- Kirsten, W. J., and Hesselius, G. U.: Rapid, automatic, high capacity Dumas determination of nitrogen. *Microchemical Journal*, 28, 529-547, doi:10.1016/0026-265X(83)90011-5, 1983.
- Lahav, E., and Turner, D. W.: Fertilizing for high yield banana. International potash Institute, Berne/Switzerland, IPI Bulletin, 62, 1989.
- 675 Lal, R.: Soil erosion and the global carbon budget. *Environment International*, 29, 437-450, Doi:10.1016/S01604120(02)00192-7, 2003.

- 680 Mamo, T., Karlton, E., and Bekele, T.: Soil fertility status and fertilizer recommendation atlas for Tigray Regional State, Ethiopia. Ministry of Agriculture and Ethiopian Agricultural Transformation Agency, 91, 2014.
- Mamo, T., Richter, C., and Heiligtag, B.: Phosphorus availability studies on ten Ethiopian Vertisols. *Journal of Agriculture and Rural Development in the Tropics and Subtropics*, 103, 177-183, 2002.
- 685 Manners R., and van Etten, J.: Are agricultural researchers working on the right crops to enable food and nutrition security under future climates? *Global Environmental Change*, 53, 182-194, doi:10.1016/j.gloenvcha.2018.09.010, 2018.
- Mariño, R., and Banga, R. S.: UN sustainable development goals (SDGs): A time to act. *Journal of Oral Research*, 5, 5-6, doi:10.17126/joralres.2016.002, 2016.
- 690 ▲
- Martin-Prével, P.: Sampling of banana for foliar analysis: Consequences of differences in techniques. *Fruits*, 32, 151-166, 1977.
- Mburu, K., Oduor, R., Mgotu, A., and Tripathi, L.: Silicon application enhances resistance to Xanthomonas wilt disease in banana. *Plant Pathology*, 65, 807-818, doi:10.1111/ppa.12468, 2016.
- 695 2016.
- Merga, I. F., Tripathi, L., Hvoslef-Eide, A. K., and Gebre, E.: Application of genetic engineering for control of bacterial wilt disease of enset, Ethiopia's sustainability crop. *Frontiers in Plant Science*, 10, 1-8, doi:10.3389/fpls.2019.00133, 2019.
- Minda, T. T., Van Der Molen, M. K., Struik, P. C., Combe, M., Jiménez, P. A., Khan, M. S., and De Arellano, J. V. G.: The combined effect of altitude and meteorology on potato crop dynamics: A
- 700

**Moved down [3]:** Mburu, K., Oduor, R., Mgotu, A., and Tripathi, L.: Silicon application enhances resistance to Xanthomonas wilt disease in banana. *Plant Pathology*, 65, 807-818, doi:10.1111/ppa.12468, 2016. [↗](#)

**Formatted:** Indent: Left: 0 cm, First line: 0 cm

**Moved (insertion) [3]**

- 705 10-year study in the Gamo Highlands, Ethiopia. *Agricultural and Forest Meteorology*, 262, 166-177, doi:10.1016/j.agrformet.2018.07.009, 2018.
- Moges, A., and Holden, N. M.: Soil fertility in relation to slope position and agricultural land use: A case study of Umbulo catchment in southern Ethiopia. *Environmental management*, 42, 753-763, doi:10.1007/s00267-008-9157-8, 2008.
- 710 Mohammed, B., Gabel, M., and Karlsson, L. M.: Nutritive values of the drought-tolerant food and fodder crop enset. *African Journal of Agricultural Research*, 8, 2326-2333, doi:10.5897/AJAR12.1296, 2013.
- Mokolobate, M., and R. Haynes.: Comparative liming effect of four organic residues applied to an acid soil. *Biology and Fertility of Soils*, 35, 79-85, doi:10.1007/s00374-001-0439-z, 2002.
- 715 Mwebaze, J. M., Tusiime, G., Teshemereirwe, W. K., and Kubiriba, J.: The survival of *Xanthomonas campestris* pv. *musacearum* in soil and plant debris. *African Crop Science Journal*, 14, 121-127, 2006.
- Nabhan, H., Mashali, A. M., and Mermut, A. R.: Integrated soil management for sustainable agriculture and food security in Southern and East Africa. Proceedings of the expert consultation. Harare, Zimbabwe. Food and Agriculture Organization of the United Nations. Rome, Italy, 415, 1999.
- 720 Nayar, N. M.: The contribution of tropical tuber crops towards food security. *Journal of Root Crops*, 40, 3-14, 2014.
- Naylor, R. L., Falcon W.P., Goodman, R. M., Jahn, M. M., Sengooba, T., Tefera, H., Nelson R. J.: 725 Biotechnology in the developing world: a case for increased investments in orphan crops. *Food Policy* 29, 15-44, doi: 10.1016/j.foodpol.2004.01.002, 2004.
- Ndabamenye, T., Van Asten, P. J., Blomme, G., Vanlauwe, B., Uzayisenga, B., Annandale, J. G., and Barnard, R. O.: Nutrient imbalance and yield limiting factors of low input East African highland

Deleted: 5

- 730 banana (*Musa* spp. AAA-EA) cropping systems. *Field Crops Research*, 147, 68-78, doi:10.1016/j.fcr.2013.04.001, 2013.
- Negash, A., Puite, K., Schaart, J., Visser, B., and Krens, F.: In vitro regeneration and micro-propagation of enset from southwestern Ethiopia. *Plant Cell, Tissue and Organ Culture*, 62, 153-158, doi:10.1023/A:1026701419739, 2000.
- 735 Negash, M., Starr, M., and Kanninen, M.: Allometric equations for biomass estimation of Enset (*Ensete ventricosum*) grown in indigenous agroforestry systems in the Rift Valley escarpment of southern-eastern Ethiopia. *Agroforestry systems*, 87, 571-581, doi:10.1007/s10457-012-9577-6, 2013.
- Nurfeta, A., Tolera, A., Eik, L. O., and Sundstøl, F.: Yield and mineral content of ten enset (*Ensete ventricosum*) varieties. *Tropical Animal Health and Production*, 40, 299-309, doi:10.1007/s11250-007-9095-0, 2008.
- 740 Nurfeta, A., Tolera, A., Eik, L. O., and Sundstøl, F.: Feeding value of enset (*Ensete ventricosum*), *Desmodium intortum* hay and untreated or urea and calcium oxide treated wheat straw for sheep. *Journal of Animal Physiology and Animal Nutrition*, 93, 94-104, doi:10.1111/j.1439-0396.2007.00784.x, 2009.
- 745 Nyombi, K., Van Asten, P. J., Corbeels, M., Taulya, G., Leffelaar, P. A., and Giller, K. E.: Mineral fertilizer response and nutrient use efficiencies of East African highland banana (*Musa* spp.,



- AAA-EAHB, cv. Kisansa). *Field Crops Research*, 117(1), 38-50, doi:10.1016/j.fcr.2010.01.011, 2010.
- 750 Ocimati, W., Bouwmeester, H., Groot, J. C., Tiftonell, P., Brown, D., and Blomme, G.: The risk posed by *Xanthomonas* wilt disease of banana: Mapping of disease hotspots, fronts and vulnerable landscapes. *PLOS One*, 14, 1-19, doi:10.1371/journal.pone.0213691, 2019.
- Okumu, M. O., van Asten, P. J., Kahangi, E., Okech, S. H., Jefwa, J., and Vanlauwe, B.: Production gradients in smallholder banana (cv. Giant Cavendish) farms in Central Kenya. *Scientia Horticulturae*, 127, 475-481, doi:10.1016/j.scienta.2010.11.005, 2011.
- 755 Olmstead, J.: The versatile ensete plant: Its use in the Gamo highlands. *Journal of Ethiopian Studies*, 12, 147-158, 1974.
- Quimio, A.J., and Tessera, M.: Diseases of enset. In: Tsedeke A, Clifton H, Steven BA, Gebre-Mariam, S. (eds). *Enset-based sustainable agriculture in Ethiopia*. In *Proceedings of the*

- 760 International Workshop on onset. Ethiopian Institute of Agricultural Research, Addis Ababa, Ethiopia, 188-203, 1996.
- Renard, D., and Tilman, D.: National food production stabilisation by crop diversity. *Nature*, 571, 257-260, doi: 10.1038/s41586-019-1316-y, 2019.
- Reuter, D.J., and Robinson, J.B.: Fruits, vines and nuts. In *Plant analysis: an interpretation manual*.  
765 CSIRO Publishing, Collingwood, 354-355, 1997.
- Roy, R.N., Finck, A., Blair, G.J., and Tandon H.L.S.: Plant nutrition for food security. A guide for integrated nutrient management. *Experimental Agriculture*, 43, 132-132, doi:10.1017/S0014479706394537, 2006.
- Rosegrant, M. W., and Cline, S. A.: Global food security: challenges and policies. *Science*, 302,  
770 1917-1919, doi:10.1126/science.1092958, 2003.
- SAS Institute Inc.: JMP Pro 14 software, SAS Institute Inc., Cary, North Carolina, USA, 2018.
- Shigaki, F., Sharpley, A., and Prochnow, L. I.: Rainfall intensity and phosphorus source effects on phosphorus transport in surface runoff from soil trays. *Science of the Total Environment*, 373, 334-343, doi:10.1016/j.scitotenv.2006.10.048, 2007.
- 775 Silva, A. M. F., de Menezes, E. F., de Souza, E. B., de Melo, N. F., and Mariano, R.: Survival of *Xanthomonas campestris* pv. *viticola* in infected tissues of grapevine. *Revista Brasileira de Fruticultura*, 34, 757-765, doi:10.1590/S0100-29452012000300015, 2012.
- Singh, J. P., Karamanos, R. E., and Stewart, J. W. B.: The mechanism of phosphorus-induced zinc deficiency in bean (*Phaseolus vulgaris* L.). *Canadian Journal of Soil Science*, 68, 345-358,  
780 doi:10.4141/cjss88-032, 1988.
- Soltangheisi, A., Ishak, C. F., Musa, H. M., Zakikhani, H., and Rahman, Z. A.: Phosphorus and zinc uptake and their interaction effect on dry matter and chlorophyll content of sweet corn (*Zea mays* var. *saccharata*). *Journal of Agronomy*, 12: 187-192, doi:10.3923/ja.2013.187.192, 2013.

- Spann, T. M., and Schumann, A. W.: The role of plant nutrients in disease development with  
785 emphasis on citrus and huanglongbing. In Proceedings of the Florida State Horticultural Society,  
122, 169-171, 2009.
- Tadesse, M., Bobosha, K., Diro, M., and Gizachew, W. M.: Enset bacterial wilt sanitary control in  
Gurage zone. Research Report No. 53, Ethiopian Agricultural Research Organization, Ethiopia,  
23, 2003.
- 790 Tamire, C., and Argaw, M.: Role of Enset (*Ensete ventricosum* (Welw.) Cheesman) in soil  
rehabilitation in different agro-ecological zones of Hadiya, Southern Ethiopia. American Journal  
of Environmental Protection, 4, 285-291, doi:10.11648/j.ajep.20150406.14, 2015.
- Tefera, M., Chernet, T., and Haro, W.: Explanation of the geological map of Ethiopia, Geological  
Survey of Ethiopia. 79, 1996.
- 795 Tensaye, A. W., Lindén, B., and Ohlander, L.: Enset farming in Ethiopia: Soil nutrient status in Shoa  
and Sidamo regions. Communications in Soil Science and Plant Analysis, 29, 193-210,  
doi:10.1080/00103629809369938, 1998.
- Tesfaye, B., and Lüdders, P.: Diversity and distribution patterns of enset landraces in Sidama,  
Southern Ethiopia. Genetic Resources and Crop Evolution, 50, 359-371,  
800 doi:10.1023/A:1023918919227, 2003.
- Thongbai, P., Hannam, R. J., Graham, R. D., and Webb, M. J.: Interaction between zinc nutritional  
status of cereals and Rhizoctonia root rot severity. Plant and Soil, 153, 207-214,  
doi:10.1007/BF00012994, 1993.
- Tsegaye, A., and Struik, P. C.: Influence of repetitive transplanting and leaf pruning on dry matter  
805 and food production of enset (*Ensete ventricosum* Welw.(Cheesman)). Field Crops Research, 68,  
61-74, doi:10.1016/S0378-4290(00)00111-8, 2000.

- 810 Tsegaye, A., and Struik, P. C.: Enset (*Ensete ventricosum* (Welw.) Cheesman) kocho yield under different crop establishment methods as compared to yields of other carbohydrate-rich food crops. *Netherlands Journal of Agricultural Sciences*, 49, 81-94, doi:10.1016/S1573-5214(01)80017-8, 2001.
- Tsegaye, A., and Struik, P. C.: Analysis of enset (*Ensete ventricosum*) indigenous production methods and farm-based biodiversity in major enset-growing regions of southern Ethiopia. *Experimental Agriculture*, 38, 291-315, doi:10.1017/S0014479702003046, 2002.
- 815 Turner, D. W., and Barkus, B.: Nutrient concentrations in a range of banana varieties grown in the subtropics. *Fruits*, 36, 217-222, 1981.
- Uloro, Y., and Mengel, K.: Response of ensete (*Ensete ventricosum* W.) to mineral fertilizers in southwest Ethiopia. *Fertilizer Research*, 37, 107-113, doi:10.1007/BF00748551, 1994.
- 820 Vancampenhout, K., Nyssen, J., Gebremichael, D., Deckers, J., Poesen, J., Haile, M., and Moeyersons, J.: Stone bunds for soil conservation in the northern Ethiopian highlands: Impacts on soil fertility and crop yield. *Soil and Tillage Research*, 90, 1-15, doi:10.1016/j.still.2005.08.004, 2006.
- Whalen, J. K., Chang, C., Clayton, G. W., and Carefoot, J. P.: Cattle manure amendments can increase the pH of acid soils. *Soil Science Society of America Journal*, 64, 962-966, doi:10.2136/sssaj2000.643962x, 2000.
- 825 Winge, R. K., Peterson, V. J., and Fassel, V. A.: Inductively coupled plasma-atomic emission spectroscopy: prominent lines. *Applied Spectroscopy*, 33, 206-219, doi:10.1366/0003702794925895, 1979.

830 Welde-Michael, G., Bobosha, K., Blomme, G., Addis, T., Mengesha, T., and Mekonnen, S.:  
Evaluation of enset clones against enset bacterial wilt. African Crop Science Journal, 16, 89-95,  
doi:10.4314/acsj.v16i1.54348, 2008a.

835 Welde-Michael, G., Bobosha, K., Addis, T., Blomme, G., Mekonnen, S., and Mengesha, T.:  
Mechanical transmission and survival of bacterial wilt on enset. African Crop Science  
Journal, 16, 97-102, doi:10.4314/acsj.v16i1.54349, 2008b.

Wolde, M., Ayalew, A., and Chala, A.: Assessment of bacterial wilt (*Xanthomonas campestris* pv.  
*musacearum*) of enset in southern Ethiopia. African Journal of Agricultural Research, 11,  
1724-1733, doi:10.5897/AJAR2015.9959, 2016.

840 Wichuk, K. M., Tewari, J. P., and McCartney, D.: Plant pathogen eradication during composting: a  
literature review. Compost science and utilization, 19(4), 244-266,  
doi:10.1080/1065657X.2011.10737008, 2011.

845

**Moved down [4]:** Wolde, M., Ayalew, A., and Chala, A.:  
Assessment of bacterial wilt (*Xanthomonas campestris* pv.  
*musacearum*) of enset in southern Ethiopia. African  
Journal of Agricultural Research, 11, 1724-1733,  
doi:10.5897/AJAR2015.9959, 2016.

**Moved (insertion) [4]**

Yemataw, Z., Mekonen, A., Chala, A., Tesfaye, K., Mekonen, K., Studholme, D. J., and Sharma, K.: Farmers' knowledge and perception of enset *Xanthomonas* wilt in southern Ethiopia. *Agriculture and food security*, 6, 1-12, doi:10.1186/s40066-017-0146-0, 2017.

855 Yemataw, Z., Mohamed, H., Diro, M., Addis, T., and Blomme, G.: Enset (*Ensete ventricosum*) clone selection by farmers and their cultural practices in southern Ethiopia. *Genetic Resources and Crop Evolution*, 61, 1091-1104, doi:10.1007/s10722-014-0093-6, 2014.

860 Yemataw, Z., Tesfaye, K., Zeberga, A., and Blomme, G.: Exploiting indigenous knowledge of subsistence farmers for the management and conservation of Enset (*Ensete ventricosum* (Welw.) cheesman) (Musaceae family) diversity on-farm. *Journal of Ethnobiology and Ethnomedicine*, 12, 1-25, doi:10.1186/s13002-016-0109-8, 2016.

Yirgou, D., and Bradbury, J. F.: Bacterial wilt of Enset (*Ensete ventricosum*) incited by *Xanthomonas musacearum* sp. *Phytopathology*, 58, 111-112, 1968.

865 Zelleke, G., Getachew, A., Abera, D., and Rashid, S.: Fertilizer and soil fertility potential in Ethiopia: Constraints and opportunities for enhancing the system. IFPRI. 63, 2010.

Zerfu, A., Gebre, S. L., Berecha, G., and Getahun, K.: Assessment of spatial distribution of enset plant diversity and enset bacteria wilt using geostatistical techniques in Yem special district, Southern Ethiopia. *Environmental Systems Research*, 7, 1-13, doi:10.1186/s40068-018-0126-9, 2018.

870 Zewdie, S., Fetene, M., and Olsson, M.: Fine root vertical distribution and temporal dynamics in mature stands of two enset (*Ensete ventricosum* Welw Cheesman) clones. *Plant and Soil*, 305, 227-236, doi:10.1007/s11104-008-9554-z, 2008.

Moved (insertion) [5]

Moved up [5]: Yemataw, Z., Mohamed, H., Diro, M., Addis, T., and Blomme, G.: Enset (*Ensete ventricosum*) clone selection by farmers and their cultural practices in southern Ethiopia. *Genetic Resources and Crop Evolution*, 61, 1091-1104, doi:10.1007/s10722-014-0093-6, 2014.¶