

Reply to the topical Editor

MS Title: Development of soil biological quality index for soils of semi-arid tropics

Author(s): Selvaraj Aravindh et al.

MS No.: soil-2019-60

Comments to the Author:

We acknowledge the effort made to revise the English text and to address all referee's comments. The manuscript was reviewed a second time by one of the referees and there are some minor issues that need to be addressed. He also strongly recommends again to have a look to the English text. Could you please find a native independent English speaker to review critically the English text again? I encourage you to go on and address those minor comments, as well as a revision of the language, to complete a successful publication process.

Reply: As pointed out by the reviewer and the technical editor, I have made all the minor corrections as well as the English of the text. We have revised the English based on the native English-speaking colleague from Florida International University, Miami.

Reviewer's suggestions as minor revision:

In section 2.4, I find the formulas for calculating SBQI a bit confusing. The reason is the first SBQI is shown as "SBQI – 1 =", the second as "SBQI – 2 =", etc. I think the authors mean the first SBQI, second SBQI, etc. as they write this, but at first I was wondering why the first equation subtracted 1 from the SBQI, the second subtracted 2 from SBQI, etc. I recommend writing these as SBQI1, SBQI2, etc., or something similar, so it does not look like a mathematical operation is taking place on the left side of the equation.

Reply: As pointed out by reviewer, the SBQI-1 leads to confusion as 'subtraction'. Hence, the expression of different SBQIs was rewritten as SBQI1, SBQI2, SBQI3, SBQI4 and SBQI5. This change was made throughout the text, table and supplementary materials.

Line 218 – "significantly discriminated against the soils". I think the authors are saying here that the SBQI-1 method was able to differentiate between soils. Discriminated against carries a negative connotation and I do not think it represents what the authors were trying to say. Same comment in lines 231-232 and other places where this wording occurs.

Reply: As per the suggestion made by the reviewer, the phrase 'discriminated against' was changed throughout the text.

Line 339 and Line 341 – Both these lines say the 25 farm fields were used for validation, this is repetitive.

Reply: The repetitive phrase was removed in the revised MS.

Lines 350-356 – None of these issues were tested during the study (or if they were, it was not described in the manuscript). Therefore, this comes across as speculation.

Reply: The issues listed in this part of discussion is purely based on the previous works and reports, not from this study. These assumptions may lead to speculation. Hence, we have removed the lines in the revised MS and concluded accordingly.

Lines 364-365 – “This method also identifies the constraints of the soil biology better than the other four methods.” I don’t see how this was accomplished in this study. What I see in this study is the idea for a new SBQI, and the tests done showed that this SBQI gives comparable results to other, already established SBQI. Therefore, it appears to be a valid way to determine SBQI. Further research is needed to determine any benefits and drawbacks of this method as compared to other methods.

Reply: This is in response with the earlier comment too. We listed the possible constraints due to low SBQI at the end of the discussion (Lines 350-356 of revision-2). However, we have deleted it in this revision as per the advice of the reviewer. Hence, this sentence also be removed accordingly.

Development of soil biological quality index for soils of semi-arid tropics

Selvaraj Aravindh, Chinnappan Chinnadurai, and Danajeyan Balachandar*

5 Department of Agricultural Microbiology, Tamil Nadu Agricultural University, Coimbatore 641003, India

Correspondence to: D. Balachandar (dbalu@tnau.ac.in)

Abstract

The agricultural intensification, an inevitable process to feed the ever-increasing population, affects the soil quality due to management-induced changes. To measure the soil quality in terms of soil functioning, several attempts were made to develop the soil quality index (SQI) based on a set of soil attributes. However, there is no universal consensus protocol available for SQI and the role of soil biological indicators in SQI is meager. Therefore, ~~the aim of~~ the present work ~~is~~ aims to develop a unitless soil biological quality index (SBQI) scaled between 0 and 10, which would be a major component of SQI in the future. The long-term organic manure amended (OM), integrated nutrient management enforced (INM), synthetic fertilizer applied (IC), and unfertilized control (Control) soils from three different predominant soil types of the location (Tamil Nadu state, India) were chosen for this. The soil organic carbon, microbial biomass carbon, labile carbon, protein index, dehydrogenase activity, and substrate-induced respiration were used to estimate the SBQI. Five different SBQI methods viz., simple additive (SBQI-1 and SBQI-2), scoring function (SBQI-3), principal component analysis-based statistical modeling (SBQI-4), and quadrant-plot based method (SBQI-5) were developed to estimate the biological quality as unitless scale. All the five methods have the same resolution to discriminate ~~against~~ the soils and $INM \approx OM > IC > Control$ is the relative trend being followed in all the soil types based on the SBQIs. All the five methods were further validated for their efficiency in 25 farmers' soils of the location and proved that these methods can scale the biological health of the soil. Among the five SBQIs, we recommend SBQI-5, which relates the variables to each other to scale the biological health of the soil.

25 **Keywords:** Soil health; Soil quality index; Biological indicators; Sustainable soil management

1. Introduction

Soil quality, according to Doran and Parkin (1994), is the capacity of a soil to function, within the ecosystem and land-use boundaries, to sustain productivity, maintain environmental quality and promote plant and animal health. Soil quality uses several physical, chemical, and biological attributes of soil either individually or in combinations to determine if the soil function under different management and agricultural practices is improving, stable, or degrading (Andrews et al., 2002; Bünemann et al., 2018). As the soil functions of interest and the environmental factors differ among the soil systems, no universal method is available to measure the quality using a common set of indicators (Bouma, 2002; Rinot et al., 2019). Selected soil attributes that are used to assess the soil quality are referred to as 'soil quality indicators'. Their measure in the soil as influenced by nutrient

35 management, tillage, cropping system, and all ecosystem disturbance activities were used to assess the soil
quality and its sustainability (Andrews et al., 2004;Karlen et al., 2006;Masto et al., 2008;Bai et al., 2018).
Alternatively, soil properties such as soil organic carbon and their fractions, soil aggregates and their stability
and several microbial attributes, that are sensitive to management practices were also used to monitor the quality
(Bastida et al., 2016;Duval et al., 2020;Giannitsopoulos et al., 2019;Khan et al., 2020;Li et al., 2020;Liu et al.,
40 2019;Yang et al., 2019). Apart from these, several biochemical properties including respiration, nitrification and
enzymes' activity were also reported as the good sensitive indicators for the soil quality (Bastida et al.,
2019;Bastida et al., 2015;Bhowmik et al., 2019;Jian et al., 2020;Mundepi et al., 2019;VeVerka et al., 2019).
However, the choice of soil indicators and their contribution to soil quality vary according to several factors
including climate, intended land use patterns, and so on (Karlen et al., 2006;Stewart et al., 2018). Soil quality was
45 used as a tool to test the effects of soil management practices and tillage systems (Armenise et al., 2013;Jernigan
et al., 2020;Williams et al., 2020), land use type (Masto et al., 2008;Rahmanipour et al., 2014), cover crop (Bastida
et al., 2006;Fu et al., 2004;Navas et al., 2011;Jian et al., 2020) and native ecosystems and grassland degradation
(Alves de Castro Lopes et al., 2013;Li et al., 2013;Pérez-Jaramillo et al., 2019) on soil function.

The term 'soil quality index' (SQI) is defined as 'the minimum set of parameters that, when interrelated,
50 provides numerical data on the capacity of soil to carry out one or more functions' (Acton and Padbury, 1993).
SQI is the functions of more than a few soil quality indicators, which is defined as 'measurable property that
influences the capacity of a soil to carry out a given function' (Acton and Padbury, 1993). The soil quality index
assessment studies showed that SQI is complex because of diversity of soil quality indicators (representing
physical, chemical and biological attributes of the soil) and unease to integrate them all to establish into a single
55 measurable scale (Garcia et al., 1994;Halvorson et al., 1996;Papendick and Parr, 1992). Several attempts were
made to aggregate the information got for each soil quality indicator into an SQI. The simple addition of soil
quality indicators (Velásquez et al., 2007;Mukherjee and Lal, 2014) or scoring function of soil quality indicators
(Moebius-Clune et al., 2016) are the two common approaches used to scale the soil quality index between 0 and 1
or 0 and 10. The selection of soil quality indicators should deliberate- to the soil functions of interest (Nortcliff,
60 2002); threshold values of such identified indicators should be based the local conditions and indicator selection
should be based on experts' opinion or statistical procedures or a combination of both to get a minimum data set.
However, the soil quality index should link the scientific knowledge and agricultural and land management
practices to assess sustainability (Romig et al., 1995). Most of the SQI give more importance to the physical (soil
aggregation, water retention) and chemical indicators (carbon dynamics and nutrient carrying capacity) with less
65 importance to biological attributes (microbial biomass carbon, arthropods)(Biswas et al., 2017;Calero et al.,
2018;Menta et al., 2018;Pulido et al., 2017;Schmidt et al., 2018). To emphasize the biological and biochemical
attributes to soil quality, the biological quality of soil (BSQ) was first proposed by Parisi (2001) which used to
measure the bioindicators of soil, especially the arthropods of soil. This approach was successfully validated with
other physical and chemical indicators by several workers (Blasi et al., 2013;Menta et al., 2018;Menta et al.,
70 2014;Rüdisser et al., 2015;Visioli et al., 2013). Pascazio et al. (2018) used microbial biomass, β glucosidase,
mineralizable nitrogen, and urease to represent the biological indicators to measure the SQI. Similarly, Vincent et
al. (2018) used bacterial and fungal density and richness with mycorrhizal colonization as bioindicators for SQI.
From these works, it is evident that there is no consensus to represent the biological component of the SQI. In the
present work, we have developed a unitless soil biological quality index (SBQI) using six important biological
75 attributes of soil. This index may be a part of SQI in the future to assess the soil quality for sustaining agricultural
productivity.

2. Materials and Methods

2.1. Experimental sites and soil sampling

80 Long-term permanent manure trials being maintained by Tamil Nadu Agricultural University, India at three different locations of Tamil Nadu state, India viz., (i) Department of Soil Science and Agricultural Chemistry, Coimbatore, (ii) Agricultural College and Research Institute, Madurai, (iii) Agricultural Research Station, Kovilpatti (designated as Coimbatore, Madurai, and Kovilpatti, respectively) were selected for this investigation. The details of the study area, trial details, and their basic soil characteristics were described in Table 1. In all these
85 experimental plots, organic (farmyard manure, green manure) and inorganic (nitrogenous, phosphate, and potash fertilizers) nutrient management were assessed for crop response over a period of time. All the experimental plots were single non-replicated plots with 5 x 4 m size. Though difference exists in the set of treatments being adopted among the three long-term trials, we have chosen four long-term nutrient management-adopted soils existing in all the three trials for our investigation i.e., control soil (control); inorganic
90 fertilizers applied soil (IC); organic amendment applied soil (OM) and integrated nutrient management (both organic and inorganic) adopted soil (INM). The details of each treatment are as follows: Control represents the plot in which the crop (Coimbatore - maize followed by sunflower; Madurai - rice; Kovilpatti - cotton followed by bajra) was raised without any nutrient amendments. The soils with naturally added crop residues were incorporated during tillage. In IC, nitrogen (N), phosphorus (P) and potassium (K) were applied in the form of
95 urea, superphosphate, and murate of potash at recommended dosage varied among the crops (maize – 135:62.5:50 kg NPK/ha; sunflower - 40:20:20 kg NPK/ha; rice – 120:60:60 kg NPK/ha; cotton and bajra – 40:20:0 kg NPK/ha). Half dose of N and a full dose of P and K fertilizers were applied as basal, while the remaining half of N was top-dressed during crop growth. OM plot was applied with farmyard manure alone as a nutrient amendment (12.5 t/ha of farmyard manure, FYM, irrespective of the crop). The well-decomposed manure was
100 incorporated into the soil during the last ploughing before sowing every crop. INM refers to the plot with 100% NPK as chemical fertilizers along with FYM (12.5 t/ha) (similar to IC and OM, respectively). All the plots were ploughed using country-plough, added with different nutrient amendments, and leveled manually. The respective crops were raised as per the standard practice (Coimbatore – irrigated, maize/sunflower; Madurai – wetland, rice; Kovilpatti – rainfed, cotton/bajra).

105 Samples were collected from the upper 15 cm of the surface soil of each plot during the fallow period, when the crop was not raised (January 2018). In each plot, ten sub-sample soil cores were collected randomly and pooled together in a composite sample, giving three biological replicates. Likewise, sampling was repeated three times, giving a total of nine replicates from four plots in each location. The debris, plant residues, and stones were removed during sampling to avoid any influence on soil parameters analyzed. The soil samples were
110 packed in plastic bags, transported to the laboratory using an ice cooler box, and stored at 4°C. The gravimetric moisture content of the soil was measured immediately.

2.2. Soil biological properties

Soil organic carbon (SOC) was analyzed by wet chromic acid digestion method (Walkley and Black, 1934) and expressed as mg per g of soil. The microbial biomass carbon (MBC) was measured by the fumigation-incubation technique (Jenkinson and Powlson, 1976) and expressed as µg per g of soil. Soil labile carbon (SLC)
115 was measured by the permanganate method (Blair and Crocker, 2000) and expressed as µg per g of soil. Soil protein was extracted from soil using a protocol as described by Hurisso et al. (2018) and expressed as µg per g of

soil. The dehydrogenase (DHA) was measured by the procedure described by Casida Jr et al. (1964) and expressed as µg of triphenyl formazan released per g soil per day. The substrate-induced respiration (SIR) was measured the rate of respiration in the soil after glucose was amended in it and expressed as µg of CO₂ released/g soil/h (Enwall et al., 2007).

2.3. Data analysis

The relation between soil variables influenced by long-term nutrient management adoptions was evaluated by Pearson correlation analysis (Pearson, 1895) and simple linear regression (Freedman, 2009) using SPSS (SPSS Statistics for Windows, Version 20.0. Armonk, NY: IBM Corp). The scoring function for each assessed variables of soil was developed by SPSS 20.0. For this, the data were transformed into rank scores (rank case function of SPSS) and scoring percentile was calculated using the following formulae:

$$\text{Percentile score} = \frac{\text{Ranking score of the variable} - 0.05}{\text{Number of samples}} \times 100$$

To assess the relativeness of assessed soil variables and their cumulative contribution to the variability among the treatments, principal component analysis (PCA) (Wold et al., 1987) was performed on the data using XLSTAT (Version 2010.5.05, Addinsoft, USA).

2.4. Estimating soil biological quality index (SBQI)

2.4.1. Simple additive methods (SBQI-1 and SBQI-2)

In the simple additive method, the assessed soil parameters were given threshold values based on the available literature and previous experiences. The threshold values of each parameter were further scored as soil index scores (SIS) (Table 2). From these score values, the soil biological quality index (SBQI), unitless scoring value scaled to 1-10, was calculated using the formula as follows (Amacher et al., 2007):

$$SBQI-1 = \frac{\sum_{i=0}^n SIS}{S} \times 10$$

Where SIS represents the score value of individual attributes; S represents the sum of maximum SIS (=24).

In SBQI-2, the index computed was normalized using the maximum and minimum values of the dataset (Amacher et al., 2007). The formula for this method is as follows:

$$\text{Scaled SBQI} = (\sum SIS - SIS_{min}) / (SIS_{max} - SIS_{min})$$

$$SBQI-2 = \frac{\text{Scaled SBQI}}{S} \times 10$$

Where $\sum SIS$ refers to the sum of all soil index scores and SIS_{min} and SIS_{max} are minimum and maximum values of SIS of the dataset. S represents the sum of maximum SIS (=24)

2.4.2. Weighed additive method (SBQI-3)

For this, the data were transformed into rank scores (rank case function of SPSS) and the scoring percentile was calculated in SPSS. The scoring percentiles were summed and scaled to 10 (Moebius-Clune et al., 2016).

145 Further, the index values were normalized using the minimum and maximum SBQI values of the dataset. The formulae for the SBQI-3 calculation are as follows:

$$\sum SBQI = \frac{\sum \text{Percentile score of individual attributes}}{MP} \times 10$$

$\sum SBQI$ represents the sum of SBQI derived from percentile scores, whereas MP represents the sum of the maximum percentile score (=600).

$$SBQI-3 = (\sum SBQI - SBQI_{min}) / (SBQI_{max} - SBQI_{min})$$

150 Where, $\sum SBQI$ refers to the sum values from the above formula and $SBQI_{min}$ and $SBQI_{max}$ are minimum and maximum values of SBQI of the dataset.

2.4.3. PCA based SBQI (SBQI-4)

The principal component analysis of all the six biological parameters of four soil samples of three locations was performed as described elsewhere. From the outcome of PCA, the SBQI was calculated (Andrews et al., 2002; Mandal et al., 2011; Masto et al., 2008). This SBQI used the percent contribution of individual variability to calculate the over-all soil biological quality of the soil. The formulae adopted to calculate SBQI-4 are as follows:

$$\text{Cumulative variability (\%)} = \text{PC1 variability} + \text{PC2 variability}$$

$$\text{Individual variability contribution (VC)} = \frac{\% \text{ contribution by the biological indicator}}{\text{Variability of the corresponding PC}}$$

$$SBQI-4 = \frac{\sum (\text{Observed value} \times \text{VC})}{\text{Cumulative variability}}$$

2.4.4. Quadrant-plot based SBQI (SBQI-5)

As any soil variable is not independently acting, and it depends on several other variables or under the influence of other variables, the relativeness of two closely associated variables (Example SOC and MBC) is used to measure the soil biological quality. This method is adopted for the variables that are well-correlated to each other. Six significantly correlated ($P < 0.001$) variable pairs and their R^2 values and means were used for the scoring (Table 3). The paired variables were plotted in a scatter plot using variable-1 (major contributor) in the x-axis and variable-2 (secondary contributor) in the y-axis. The scatter plot was converted into four quadrants by scaling the mean values of the corresponding variables in their axes. The right-handed upper quadrant representing 'high' for both variables are scaled to 4, as both the variables above the means. The right-handed lower quadrant representing 'high for variable-a and low for variable-b' is scaled to 3. Likewise, the left-handed upper quadrant scored for 2 and the left-handed lower quadrant which represents 'low' for both the variables had the value of 1. Since, the major contributor is always in the x-axis, high for variable-a and low for variable-b had the score value of 3 and its opposite had 2. All the six-pairs (SOC/MBC, SOC/SLC, SOC/SIR, MBC/SPI, MBC/DHA, MBC/SIR) were scored using this method and SBQI was calculated as follows:

$$SBQI-5 = \sum (\text{Paired variable score} \times \text{regression coefficient})$$

To validate the SBQI methods developed from long-term manure experiment plots and also to check the consistency in SBQI calculations and to assess the relatedness among the SBQIs, the soil samples collected randomly from the farmers' field were assessed the soil biological indicators as described in the previous chapter and the biological quality indices were calculated using the five methods as described earlier. The details of those
175 soil samples were presented as Supplementary Table 1. All the five SBQIs measured for long-term nutrient management adopted soils and farmers' soil were compared through Pearson correlation as described earlier to understand the effectiveness and relation of each other.

3. Results

3.1. Statistical scrutiny of soil biological attributes for developing SBQI

180 The histogram of measured values (x-axis) of each variable and its frequency (y-axis) with a distribution curve or bell curve showed that the data observed were normally distributed. The mean \pm SD for the observed parameters viz., 7.29 ± 2.46 (SOC), 382.51 ± 199.61 (MBC), 480.30 ± 234.17 (SLC), 5.46 ± 0.84 (SPI), 11.51 ± 9.54 (DHA) and 3.20 ± 0.56 (SIR) were well-fit in the curve (Fig. 1). Among the six variables, the histogram of SOC and SLC were left-skewed; DHA (Fig. 1E) was bimodal, while those others showed normal.

185 In correlation analysis, SOC had a significant correlation with the other five biological variables, while MBC, SLC, DHA, and SIR had a significant correlation with other variables except for SPI (Table 4). Similarly, SOC as an independent variable with others as the dependent variables, the linear regression coefficient (R^2) showed significance (Table 5). All the dependent variables (MBC, SLC, SPI, DHA, SIR) showed significant R^2 ($P < 0.001$). However, SPI had the lowest R^2 (0.237), while the SLC had the highest R^2 (0.417). Likewise, SPI had the lowest
190 but significant linear regression coefficient (0.089) with MBC, while others had high R^2 values. SPI with other variables such as SLC, DHA, and SIR had insignificant R^2 .

The scatter plot with the interpolation curve between the actual values (x-axis) and the percentile scores (y-axis) had a similar trend and relation for all the assessed biological attributes (Fig. 2). The mean + SD of actual value had 79 to 81 percentile (Fig. 2A to 2F). Hence, all the six variables used in the present study fall under
195 'more is better' category, which implies that improving these variables will reflect the soil health.

The PCA-biplot representing PC1 and PC2 of assessed variables and soil samples was presented in Fig. 3. PC1 had a variability of 75.21% and PC2 added 20.48% with a cumulative variability of 95.68%, which were due to six biological variables. All the soil parameters significantly contributed to the cumulative variability of PCs. Among the soil samples, OM and INM samples of Coimbatore and Madurai, which recorded highest and positively influenced due to the nutrient managements positioned in the right-hand top quadrant, while the control samples, negatively impacted by the observed variables positioned in the left-hand bottom quadrant. The control soil of Madurai, which is at par with IC, OM, and INM of Madurai and higher than Killikulam also positioned in the positive quadrant. All the variables except SPI significantly contributed to the PC1 (>0.80 loading value), while SPI had significant loading value to PC2. Regarding the contribution of individual soil
200 variables to the total variability of the PC1 (75.21 %), MBC had 21.01%, SIR 19.88%, SLC 19.22 %, SIR 19.88%, and SOC had 18.64% contributions. SPI had a 64.75% contribution to the PC2 variability (20.48%) (Supplementary Table 2).

3.2. SBQIs of long-term nutrient management-adopted soils

The SBQIs of four long-term nutritionally managed soils were computed as a 10-scale unitless index using six biological attributes (Table 6). The sample-wise SBQIs calculated was presented as a spreadsheet (Supplementary file XLS). The SBQI-1 calculated using the threshold values of each biological attribute were ranged between 3.43 and 7.31 for the tested soil samples. Among the four nutrient managements, OM and INM had the highest SBQI values (5.93 and 6.62 for Coimbatore; 7.04 and 7.31 for Madurai; 4.49 and 5.05 for Kovilpatti respectively). The wetland soil (Madurai) recorded the highest index followed by irrigated gardenland soil (Coimbatore) and minimum in dryland soil (Kovilpatti). The least index values (between 3.0 and 4.0) were recorded in unfertilized control and IC soils. Overall, the SBQI-1 significantly discriminated ~~against~~ the soils based on the soil index scales used by the threshold index of respective soil biological variables. SBQI-2 was derived from SBQI-1 after scaling it with minimum and maximum values. Hence, the SBQI-2 values were lower than the SBQI-1, with no change in the trends due to either treatments or centres (Table 6).

The SBQI-3 was calculated based on the scoring functions (percentile) of each assessed biological variable. The calculated soil biological quality index for the four different nutrient management enforced soils collected from three different soil types (locations) showed a significant difference due to nutrient management as well as due to locations. In this method also, the highest biological index was recorded in the soils of Madurai (wetland soil) followed by Coimbatore (irrigated gardenland soil) and least in Killikulam (dryland soil). Among them, INM from Madurai recorded the highest SBQI of 8.39, followed by OM (Madurai) (7.59), while IC and control of Madurai recorded the quality index of 6.90 and 5.57, respectively. The Coimbatore (Alfisol) soils had an SBQI index of 7.13 (INM), 6.25 (OM), 3.43 (IC), and 2.77 (Control), whereas the Kovilpatti soils recorded the lowest SBQI values. INM recorded 4.24, which is lower than Control soil of Madurai, OM with 3.42; IC with 2.57 and Control had 1.73. However, like the other two methods (SBQI-1 and SBQI-2), the resolution to ~~discriminate against-differentiate among~~ the soils based on the biological properties due to long-term nutrient management is high for this method as well.

From the PCA, the percent contribution of each variable to the PCs (PC1 with SOC, MBC, SLC, DHA, and SIR; PC2 with SPI) was used to compute the SBQI-4. The actual values were weighed based on their percent contribution in PCA to the total cumulative variability. As depicted from other SBQI methods, in this method also, the soils were attributed to the same trends of SBQI values. The highest SBQI was recorded by INM (Madurai) with 6.59 followed by OM (Madurai) 6.05. Within the Coimbatore centre, INM recorded the highest index of 5.22 followed by OM (5.89), IC (3.22), and control (3.24). The same trend was noticed for other centres as well. In SBQI-5, the relation of two variables and their measured values were used for computing the quality index. The paired variables were plotted in a scatter plot and the mean of both the variables was used to form quadrants of the plot (Figure 4). The samples positioned in the quadrants were scored (scaled from 1 to 4) and the score values were weighed with the regression coefficient (R^2) and scaled to 10. Such calculated SBQI-5 values for the long-term nutrient management enforced soils were the lowest among the five different methods. The Madurai soil (wetland) recorded a score value of 4.79 to 6.79, which is relatively higher than Coimbatore (irrigated garden land soil) (2.14 to 6.43) and Kovilpatti (dryland) (1.94 to 3.95). Regarding the nutrient management effects, OM \approx INM > IC > Control was the trend followed in three different soil types.

3.3. SBQIs of farmers' soils

All five SBQI procedures scored the biological quality of the farmers' soil with a uniform trend among them (Table 7). Irrespective of the soils, SBQI-1 had a high level of scaling (example 3.33 for sample A) followed by SBQI-2 (2.89), SBQI-5 (2.02), while SBQI-3 and SBQI-4 recorded 1.59 and 1.69, respectively. All the farmers' soils got lower SBQI scores (no soil with >6.0) compared to the SBQIs of long-term OM and INM soils of permanent

manure experimental soils. When the SBQI values of permanent manurial trial soils and farmers' field soils were pooled and assessed their relativeness, all the SBQI methods showed a significant positive correlation to each other (Table 8).

4. Discussion

255 In the present work, we have developed a unitless soil biological quality index to scale the biological properties of soil, to monitor the soil health. We have chosen six biological indicators viz., soil organic carbon, soil microbial biomass, soil labile carbon, soil protein index, dehydrogenase activity, and substrate-induced respiration, whose role in soil functioning is well-documented. Apart, these variables are known for consistent performance as indicators, relatively quick, and simple assessment and sensitive to soil disturbances. We
260 measured these six variables from four long-term nutrient management adopted soils (control, inorganic fertilizer-applied, organic manure amended, and integrated nutrient management adopted). Such long-term nutrient managements are being adopted in three different soils (semi-arid Alfisol—irrigated; semi-arid subtropical Alfisol-wetland; arid-Vertisol—dryland). Hence, we assume that the data obtained from these soils can be normalized and the impact of nutrient management to these soil biological attributes could ~~be used to~~ scale
265 the SBQI so that the index can be applied to any range of soils of this region. With this background, the SBQI was computed using these six biological indicators. Based on the literature and our previous works (Balachandar et al., 2016; Balachandar et al., 2014; Chinnadurai et al., 2013; Chinnadurai et al., 2014a; Preethi et al., 2012; Tamilselvi et al., 2015), it is obvious that these biological variables were significantly altered by the nutrient management adoptions (Babin et al., 2019; van der Bom et al., 2018). All these bio-indicators were reported highest in OM and
270 INM, whereas the IC and control recorded on par values or sometimes IC was higher than control. Hence, the scale developed using these six variables should ~~discriminate against~~ differentiate among the OM, INM, IC, and control to each other. We also assume that by comparing those SBQI values of long-term experimental plots to the farmer's soils, it may be possible to predict the biological quality of the soil. This approach was already successfully used to compute the soil quality index (including physical, chemical and biological attributes) by
275 Cornell University, USA as Cornell Soil Health Assessment (Moebius-Clune et al., 2016) and Soil Assessment and Management Framework by Soil Quality Institute (Andrews and Carroll, 2001; Wienhold et al., 2004; Wienhold et al., 2009).

In the present SBQI development, compare to SBQI-1, SBQI-2 showed a relatively low-quality index. These simple additive methods performed well for the present soil ecosystems and ~~discriminated against~~ differentiate among ~~among~~ the soils based on their biological attributes as impact by the nutrient management adopted. In all three
280 locations, INM had high scores followed by OM, while IC and control had low index values. The consistent results obtained from all the three centres showed the efficiency of these two methods. Among the two, SBQI-2 would be more powerful than SBQI-1, as it normalizes the data which increased the resolution of the scoring giving weight to the localization of data. As pointed out by Mukherjee and Lal (2014), this method is relatively
285 simple, quick, and user-friendly.

The SBQI-3 is based on the scoring functioning of assessed variables. It is an advanced way of calculating SQI, establishing standard non-linear scoring functions, which typically have shapes for 'more is better', 'optimum range', 'less is better', and 'undesirable range'. The scores are relative to the measured values of the respective region and transformed the values between 0 to 1, where 0 being the poorest and the score of 1 the
290 best (Andrews et al., 2004; Moebius-Clune et al., 2016). In the present work, all the measured values of six biological variables were scored for their percentile and non-linear scores obtained grouped them as 'more is better' shaped curved (Andrews et al., 2004; Moebius-Clune et al., 2016). Hence, it is obvious that the measured

values of these indicators would have a positive correlation with SBQI. As suggested by Moebius-Clune et al. (Moebius-Clune et al., 2016), mean + 1 SD was used to score the variables and all the six variables had 78-81% scoring functions, suggest that over 70% of the samples fall within this range. Hence, these biological attributes could be significant contributors to the SBQI. If the values are less than 40%, the reliability of using the variable is questionable. Besides, to get the cumulative single index value, the scoring function percentiles of each variable were added, summed, and normalized to scale between 1 ~~to~~ and 10. The major assumption made in this method is that summing the scoring values (percentiles) of each variable rather than actual values or their soil index scales (as with SBQI-1 and SBQI-2) can provide more accurate score values among the samples tested. The scoring functions and the plots are following the Cornell Soil Health Assessment (Moebius-Clune et al., 2016). The SBQI scored based on this method also had high discriminative power on the samples obtained from permanent manure experiments of three different soils. Among the three locations, dryland soil had the lowest SBQI in this method, while the wetland soil had the highest values. In all the three soil types, INM>OM>IC>control is the trend followed for SBQI-3 values.

The PCA-based calculation is the most popular method among the researchers worldwide, across the soil types and land use management to score the SQI (Bünemann et al., 2018). This method integrated the measured variables into PCs and used to scale them to SQI. In the present investigation, we have adopted the same method with slight modification. From the PCA factor loading, each variable's contribution to the corresponding PC was used to weigh the actual measured values, and these weighed values were further summed and scaled to 1-10. Unlike previous investigators (Biswas et al., 2017; Mukherjee and Lal, 2014; Schmidt et al., 2018), we have not picked the single variable for each PC, rather all the factor loadings of six biological attributes were used to scale the SBQI. This method also significantly discriminated ~~against~~ the soils that are under the influence of long-term nutrient management adoptions under three different soil types. Compare to all the above methods, this method is a more statistical approach and gives more stress to discriminate the samples than other methods. This method was also successfully used to measure the SQI and can able to predict the yield of a particular system (Mukherjee and Lal, 2014) and relating the soil functioning (Vasu et al., 2016).

The fifth method adopted to measure the SBQI from the data is unique and uses the relatedness of two potential variables. The combinations of the variable pairs used are SOC/MBC, SOC/SLC, SOC/SIR, MBC/SPI, MBC/DHA, and MBC/SIR assuming that SOC and MBC are the major driving forces of the soil biology, while the other four variables are relating to them to the functioning. The scatter plots of each pair of variables were divided into four quadrants using the mean of each corresponding variable. The assumption made here is that any sample having more than local-average is considered as 'high' and less than that is 'low'. Thus, the relatedness of the two variables can divide the scatter plot into four quadrants, as 'high/high', 'high/low', 'low/high' and 'low/low'. Based on the position of the samples in the four quadrants, score values were given ('high/high' - 4, 'high/low' -3, 'low/high' -2 and 'low/low' -1) and these score values were used to compute the SBQI. This method measured the soils with least SBQIs, suggest that more pressure has been made to show the variability. This method adopts the less statistical and more biological approach to score the SBQI, unlike SBQI-3 and SBQI-4, which are more statistical and less biological. Though the method is relatively complicated to compute the SBQI, more inference and a better understanding of soil biological variables can be obtained. For example, high SOC/high MBC means the samples are sufficient with SOC and MBC, need to maintain them using organic amendments; high SOC/low MBC means the SOC may be recalcitrant or microbial inhibitors/heavy metals/pollutants may be present; need proper reclamation; low SOC/high MBC means the soil needs continuous organic amendments to proliferate the microbial growth; low SOC/low MBC means the soil biological quality is very poor; needs remedy to improve them. Like this, quadrant-based analyses can identify

the 'soil biological constraints' more sensitively than those methods. Hence, among the five models, SBQI-5 can be regarded as the best model to scale the biological health of the soil.

~~To validate the SBQIs developed during the present investigation, 1~~ twenty-five farmers' field in and around Coimbatore and Nilgiris districts of Tamil Nadu state, India have assessed, and SBQIs were computed by all the five models as detailed earlier. This part of the investigation was performed for validation, relatedness, and consistency of SBQIs developed in this study. All five SBQIs were in the same trend in the farmer's field. Compare to experimental soils, the farmers' soils are low in SOC, MBC, and all the measured attributes hence recorded lower SBQIs. In these soils also, SBQI-1 and SBQI-2 had relatively higher values followed by SBQI-3 and SBQI-4, while least was observed in SBQI-5. Soil from Ooty (Nilgiris) had relatively high SBQI scores compared to other samples. This was mainly because of the temperate climate and high SOC of those soils. Our SBQI results are comparable to the three methods validated by (Mukherjee and Lal (2014)). The SBQI values measured in the farmers' fields identified following constraints in the soil biological functioning: Most of the farm soils are with low SBQI values (< 4.0) and are in 'low SOC/low MBC', 'low MBC/low DHA' and 'low MBC/low SPI' category. The soil biological activities responsible for nutrient transformation, organic decomposition, carbon assimilation are low in these soils. ~~The microbes are under stress conditions due to low resources available for them. The natural resources (soil nutrients) had an insignificant role to provide nutrients to the crops. Hence, continuous exogenous nutrient supply is needed for the crops, failing which will impact productivity. As the soil microbial and biochemical processes are of low magnitude, the resilience of the crops to any adverse conditions like drought, flood, or high temperature is questionable.~~ As the poor soil management continues, these soils may deter their quality which may reflect the productivity of subsequent crops.

5. Conclusions

In the present work, we have investigated four-different nutrient managements on soil biological attributes and the difference between them was used to scale a single unitless quantitative measure as SBQI. Five different models were proposed to compute the SBQI and each method discriminated ~~against~~ the four soil samples accurately, and we could not find any difference among them. However, each method has its advantages and limitations. All the five methods gave the same results in the farmers' field and all the SBQI had a significant positive correlation to each other. Among the five SBQI models tested, SBQI-5 would be an appropriate method, as it is with less statistics and a more biological approach. ~~This method also identifies the constraints of soil biology better than the other four methods.~~

Data availability

The data that support the findings of this study are available by request from the corresponding author (D Balachandar).

Author contributions

DB designed the experimental setup. SA and CC did the soil sampling and led the lab analysis procedure. DB also did the statistics, prepared the manuscript with valuable contributions of the two co-authors SA and CC, and undertook the revisions during the review process.

Competing interests

Acknowledgments

The financial support from Indian Council on Agricultural Research, New Delhi, India through All India Network Project (AINP) on Soil Biodiversity and Biofertilizers to conduct these experiments is acknowledged. P. Malathi, Department of Soil Science and Agricultural Chemistry, Tamil Nadu Agricultural University, Coimbatore; S. Thiyageshwari, Agricultural College & Research Institute, Madurai and V. Sanjivkumar, Agricultural Research Station, Kovilpatti are acknowledged for their help and support to collect the soil samples from the permanent manure experimental fields.

References

- Acton, D., and Padbury, G.: A conceptual framework for soil quality assessment and monitoring, A program to assess and monitor soil quality in Canada: Soil quality evaluation program summary, Centre for Land and Biological Resources Research Branch, Canada, 205 pp., 1993.
- Alves de Castro Lopes, A., Gomes de Sousa, D. M., Chaer, G. M., Bueno dos Reis Junior, F., Goedert, W. J., and de Carvalho Mendes, I.: Interpretation of microbial soil indicators as a function of crop yield and organic carbon, *Soil Sci Soc Am J*, 77, 461-472, doi:10.2136/sssaj2012.0191, 2013.
- Amacher, M. C., O'Neill, K. P., and Perry, C. H.: Soil vital signs: a new soil quality index (SQI) for assessing forest soil health, *Citeseer*, UAS, 2007.
- Andrews, S., Karlen, D., and Mitchell, J.: A comparison of soil quality indexing methods for vegetable production systems in Northern California, *Agric Ecosyst Environ*, 90, 25-45, [https://doi.org/10.1016/S0167-8809\(01\)00174-8](https://doi.org/10.1016/S0167-8809(01)00174-8), 2002.
- Andrews, S. S., and Carroll, C. R.: Designing a soil quality assessment tool for sustainable agroecosystem management, *Ecological Applications*, 11, 1573-1585, [https://doi.org/10.1890/1051-0761\(2001\)011\[1573:DASQAT\]2.0.CO;2](https://doi.org/10.1890/1051-0761(2001)011[1573:DASQAT]2.0.CO;2), 2001.
- Andrews, S. S., Karlen, D. L., and Cambardella, C. A.: The soil management assessment framework, *Soil Sci Soc Am J*, 68, 1945-1962, doi:10.2136/sssaj2004.1945, 2004.
- Armenise, E., Redmile-Gordon, M., Stellacci, A., Ciccicarese, A., and Rubino, P.: Developing a soil quality index to compare soil fitness for agricultural use under different managements in the Mediterranean environment, *Soil Till Res*, 130, 91-98, <https://doi.org/10.1016/j.still.2013.02.013>, 2013.
- Babin, D., Deubel, A., Jacquiod, S., Sørensen, S. J., Geistlinger, J., Grosch, R., and Smalla, K.: Impact of long-term agricultural management practices on soil prokaryotic communities, *Soil Biol Biochem*, 129, 17-28, <https://doi.org/10.1016/j.soilbio.2018.11.002>, 2019.
- Bai, Z., Caspari, T., Gonzalez, M. R., Batjes, N. H., Mäder, P., Bünemann, E. K., de Goede, R., Brussaard, L., Xu, M., Ferreira, C. S. S., Reintam, E., Fan, H., Mihelič, R., Glavan, M., and Tóth, Z.: Effects of agricultural management practices on soil quality: A review of long-term experiments for Europe and China, *Agric Ecosyst Environ*, 265, 1-7, <https://doi.org/10.1016/j.agee.2018.05.028>, 2018.
- Balachandar, D., Doud, M. S., Schnepfer, L., Mills, D., and Mathee, K.: Long-term organic nutrient management fosters the eubacterial community diversity in the Indian semi-arid alfisol as revealed by length heterogeneity-PCR, *Commun Soil Sci Plant Anal*, 45, 189-203, 10.1080/00103624.2013.841919, 2014.
- Balachandar, D., Chinnadurai, C., Tamilselvi, S., Ilamurugu, K., and Arulmozhiselvan, K.: Lessons from long-term nutrient management adoptions in semi-arid tropical alfisol, *Int J Plant Soil Sci*, 10, 1-14, 10.9734/IJPSS/2016/24014, 2016.
- Bastida, F., Moreno, J. L., Hernandez, T., and García, C.: Microbiological degradation index of soils in a semiarid climate, *Soil Biol Biochem*, 38, 3463-3473, <https://doi.org/10.1016/j.soilbio.2006.06.001>, 2006.
- Bastida, F., Selevsek, N., Torres, I. F., Hernández, T., and García, C.: Soil restoration with organic amendments: linking cellular functionality and ecosystem processes, *Sci Rep*, 5, 15550, 10.1038/srep15550, 2015.

- Bastida, F., Torres, I. F., Moreno, J. L., Baldrian, P., Ondoño, S., Ruiz-Navarro, A., Hernández, T., Richnow, H. H., Starke, R., García, C., and Jehmlich, N.: The active microbial diversity drives ecosystem multifunctionality and is physiologically related to carbon availability in Mediterranean semi-arid soils, *Mol Ecol*, 25, 4660-4673, 10.1111/mec.13783, 2016.
- 420 Bastida, F., García, C., Fierer, N., Eldridge, D. J., Bowker, M. A., Abades, S., Alfaro, F. D., Asefaw Berhe, A., Cutler, N. A., Gallardo, A., García-Velázquez, L., Hart, S. C., Hayes, P. E., Hernández, T., Hseu, Z.-Y., Jehmlich, N., Kirchmair, M., Lambers, H., Neuhauser, S., Peña-Ramírez, V. M., Pérez, C. A., Reed, S. C., Santos, F., Siebe, C., Sullivan, B. W., Trivedi, P., Vera, A., Williams, M. A., Luis Moreno, J., and Delgado-Baquerizo, M.: Global ecological predictors of the soil priming effect, *Nature Communications*, 10, 3481, 10.1038/s41467-019-11472-7, 2019.
- 425 Bhowmik, A., Kukal, S. S., Saha, D., Sharma, H., Kalia, A., and Sharma, S.: Potential indicators of soil health degradation in different land use-based ecosystems in the Shiwaliks of Northwestern India, *Sustainability*, 11, 3908, 2019.
- Biswas, S., Hazra, G., Purakayastha, T., Saha, N., Mitran, T., Roy, S. S., Basak, N., and Mandal, B.: Establishment of critical limits of indicators and indices of soil quality in rice-rice cropping systems under different soil orders, *Geoderma*, 292, 34-48, <https://doi.org/10.1016/j.geoderma.2017.01.003>, 2017.
- 430 Blair, N., and Crocker, G.: Crop rotation effects on soil carbon and physical fertility of two Australian soils, *Soil Res*, 38, 71-84, 2000.
- Blasi, S., Menta, C., Balducci, L., Conti, F. D., Petrini, E., and Piovesan, G.: Soil microarthropod communities from Mediterranean forest ecosystems in Central Italy under different disturbances, *Environ Monitor Assess*, 185, 1637-1655, 10.1007/s10661-012-2657-2, 2013.
- 435 Bouma, J.: Land quality indicators of sustainable land management across scales, *Agric Ecosyst Environ*, 88, 129-136, [https://doi.org/10.1016/S0167-8809\(01\)00248-1](https://doi.org/10.1016/S0167-8809(01)00248-1), 2002.
- Bünemann, E. K., Bongiorno, G., Bai, Z., Creamer, R. E., De Deyn, G., de Goede, R., Flesskens, L., Geissen, V., Kuyper, T. W., Mäder, P., Puleman, M., Sukkel, W., van Groenigen, J. W., and Brussaard, L.: Soil quality – A critical review, *Soil Biol Biochem*, 120, 105-125, <https://doi.org/10.1016/j.soilbio.2018.01.030>, 2018.
- 440 Calero, J., Aranda, V., Montejo-Ráez, A., and Martín-García, J. M.: A new soil quality index based on morpho-pedological indicators as a site-specific web service applied to olive groves in the Province of Jaen (South Spain), *Comput Electron Agr*, 146, 66-76, <https://doi.org/10.1016/j.compag.2018.01.016>, 2018.
- Casida Jr, L., Klein, D., and Santoro, T.: Soil dehydrogenase activity, *Soil Sci*, 98, 371-376, 1964.
- Chinnadurai, C., Gopalaswamy, G., and Balachandar, D.: Diversity of cultivable *Azotobacter* in the semi-arid Alfisol receiving long-term organic and inorganic nutrient amendments, *Ann Microbiol*, 63, 1397-1404, <http://dx.doi.org/10.1007/s13213-013-0600-6>, 2013.
- 445 Chinnadurai, C., Gopalaswamy, G., and Balachandar, D.: Impact of long-term organic and inorganic nutrient managements on the biological properties and eubacterial community diversity of the Indian semi-arid Alfisol, *Arch Agron Soil Sci*, 60, 531-548, 2014a.
- 450 Chinnadurai, C., Gopalaswamy, G., and Balachandar, D.: Long term effects of nutrient management regimes on abundance of bacterial genes and soil biochemical processes for fertility sustainability in a semi-arid tropical alfisol, *Geoderma*, 232, 563-572, <https://doi.org/10.1016/j.geoderma.2014.06.015>, 2014b.
- Doran, J. W., and Parkin, T. B.: Defining and assessing soil quality, in: *Defining soil quality for a sustainable environment*, edited by: Doran, J. W., Coleman, D. C., Bezdicek, D. F., and Stewart, B. A., SSSA Special Publication, 35, Soil Science Society of America and American Society of Agronomy, Madison, WI, 1-21, 1994.
- 455 Duval, M. E., Martinez, J. M., and Galantini, J. A.: Assessing soil quality indices based on soil organic carbon fractions in different long-term wheat systems under semiarid conditions, *Soil Use and Management*, 36, 71-82, 10.1111/sum.12532, 2020.
- Enwall, K., Nyberg, K., Bertilsson, S., Cederlund, H., Stenström, J., and Hallin, S.: Long-term impact of fertilization on activity and composition of bacterial communities and metabolic guilds in agricultural soil, *Soil Biol Biochem*, 39, 106-115, 2007.
- 460 Freedman, D. A.: *Statistical models: theory and practice*, cambridge university press, 2009.
- Fu, B. J., Liu, S. L., Chen, L. D., Lu, Y. H., and Qiu, J.: Soil quality regime in relation to land cover and slope position across a highly modified slope landscape, *Ecol Res*, 19, 111-118, <https://doi.org/10.1111/j.1440-1703.2003.00614.x>, 2004.
- García, C., Hernández, T., and Costa, F.: Microbial activity in soils under Mediterranean environmental conditions, *Soil Biol Biochem*, 26, 1185-1191, [https://doi.org/10.1016/0038-0717\(94\)90142-2](https://doi.org/10.1016/0038-0717(94)90142-2), 1994.

- 465 Giannitsopoulos, M. L., Burgess, P. J., and Rickson, R. J.: Effects of conservation tillage systems on soil physical changes and crop yields in a wheat-oilseed rape rotation, *J Soil Water conserv*, 74, 247-258, 10.2489/jswc.74.3.247, 2019.
- Halvorson, J. J., Smith, J. L., and Papendick, R. I.: Integration of multiple soil parameters to evaluate soil quality: a field example, *Biol Fert Soils*, 21, 207-214, <https://doi.org/10.1007/BF00335937>, 1996.
- 470 Hurisso, T. T., Moebius-Clune, D. J., Culman, S. W., Moebius-Clune, B. N., Thies, J. E., and van Es, H. M.: Soil protein as a rapid soil health indicator of potentially available organic nitrogen, *Agricultural and Environmental Letters*, 3, 10.2134/acl2018.02.0006, 2018.
- Jenkinson, D. S., and Powlson, D. S.: The effects of biocidal treatments on metabolism in soil – V: A method for measuring soil biomass, *Soil Biol Biochem*, 8, 209-213, [https://doi.org/10.1016/0038-0717\(76\)90005-5](https://doi.org/10.1016/0038-0717(76)90005-5), 1976.
- 475 Jernigan, A. B., Wickings, K., Mohler, C. L., Caldwell, B. A., Pelzer, C. J., Wayman, S., and Ryan, M. R.: Legacy effects of contrasting organic grain cropping systems on soil health indicators, soil invertebrates, weeds, and crop yield, *Agric Syst*, 177, 102719, <https://doi.org/10.1016/j.agry.2019.102719>, 2020.
- Jian, J., Lester, B. J., Du, X., Reiter, M. S., and Stewart, R. D.: A calculator to quantify cover crop effects on soil health and productivity, *Soil Till Res*, 199, 104575, <https://doi.org/10.1016/j.still.2020.104575>, 2020.
- 480 Karlen, D. L., Hurley, E. G., Andrews, S. S., Cambardella, C. A., Meek, D. W., Duffy, M. D., and Mallarino, A. P.: Crop rotation effects on soil quality at three northern corn/soybean belt locations, *Agronomy journal*, 98, 484-495, DOI: 10.1016/S0016-7061(03)00039-9 2006.
- Khan, M. I., Gwon, H. S., Alam, M. A., Song, H. J., Das, S., and Kim, P. J.: Short term effects of different green manure amendments on the composition of main microbial groups and microbial activity of a submerged rice cropping system, *Appl Soil Ecol*, 147, 103400, <https://doi.org/10.1016/j.apsoil.2019.103400>, 2020.
- 485 Lal, R.: Soil carbon sequestration impacts on global climate change and food security, *Science*, 304, 1623-1627, 10.1126/science.1097396, 2004.
- Li, P., Zhang, T., Wang, X., and Yu, D.: Development of biological soil quality indicator system for subtropical China, *Soil Till Res*, 126, 112-118, <https://doi.org/10.1016/j.still.2012.07.011>, 2013.
- 490 Li, T., Sun, Z., He, C., Ge, X., Ouyang, Z., and Wu, L.: Changes in soil bacterial community structure and microbial function caused by straw retention in the North China Plain, *Arch Agron Soil Sci*, 66, 46-57, 10.1080/03650340.2019.1593382, 2020.
- Liu, M., Wang, C., Wang, F., and Xie, Y.: Vermicompost and humic fertilizer improve coastal saline soil by regulating soil aggregates and the bacterial community, *Arch Agron Soil Sci*, 65, 281-293, 10.1080/03650340.2018.1498083, 2019.
- Mandal, U. K., Ramachandran, K., Sharma, K., Satyam, B., Venkanna, K., Udaya Bhanu, M., Mandal, M., Masane, R. N., Narsimlu, B., and Rao, K.: Assessing soil quality in a semiarid tropical watershed using a geographic information system, *Soil Sci Soc Am J*, 75, 1144-1160, DOI: 10.1201/b16500-81, 2011.
- 495 Masto, R. E., Chhonkar, P. K., Singh, D., and Patra, A. K.: Alternative soil quality indices for evaluating the effect of intensive cropping, fertilisation and manuring for 31 years in the semi-arid soils of India, *Environ Monitor Assess*, 136, 419-435, <https://doi.org/10.1007/s10661-007-9697-z>, 2008.
- 500 Menta, C., Conti, F. D., Pinto, S., Leoni, A., and Lozano-Fondón, C.: Monitoring soil restoration in an open-pit mine in northern Italy, *Appl Soil Ecol*, 83, 22-29, <https://doi.org/10.1016/j.apsoil.2013.07.013>, 2014.
- Menta, C., Conti, F. D., Pinto, S., and Bodini, A.: Soil biological quality index (QBS-ar): 15 years of application at global scale, *Ecol Indic*, 85, 773-780, <https://doi.org/10.1016/j.ecolind.2017.11.030>, 2018.
- Moebius-Clune, B., Moebius-Clune, D., Gugino, B., Idowu, O., Schindelbeck, R., and Ristow, A.: Comprehensive assessment of soil health, 3.2 ed., *The Cornell Framework Manual*, Edition 3.1, Cornell University, Ithaca, NY, 2016.
- 505 Mukherjee, A., and Lal, R.: Comparison of soil quality index using three methods, *Plos One*, 9, e105981, <https://doi.org/10.1371/journal.pone.0105981>, 2014.
- Mundepi, A., Cabrera, M., Norton, J., and Habteselassie, M.: Ammonia oxidizers as biological health indicators of elevated Zn and Cu in poultry litter amended soil, *Water, Air, & Soil Pollution*, 230, 239, 10.1007/s11270-019-4283-x, 2019.
- Navas, M., Benito, M., Rodríguez, I., and Masaguer, A.: Effect of five forage legume covers on soil quality at the Eastern plains of Venezuela, *Appl Soil Ecol*, 49, 242-249, <https://doi.org/10.1016/j.apsoil.2011.04.017>, 2011.
- 510 Nortcliff, S.: Standardisation of soil quality attributes, *Agric Ecosyst Environ*, 88, 161-168, [https://doi.org/10.1016/S0167-8809\(01\)00253-5](https://doi.org/10.1016/S0167-8809(01)00253-5), 2002.

- Papendick, R. I., and Parr, J. F.: Soil quality-the key to a sustainable agriculture, *Am J Alter Agric*, 7, 2-3, <https://doi.org/10.1017/S0889189300004343>, 1992.
- 515 Parisi, V.: La qualità biologica del suolo. un metodo basato sui microartropodi, *Acta Naturalia de l'Ateneo Parmense*, 37, 97-106, 2001.
- Pascazio, S., Crecchio, C., Scagliola, M., Mininni, A. N., Dichio, B., Xiloyannis, C., and Sofo, A.: Microbial-based soil quality indicators in irrigated and rainfed soil portions of Mediterranean olive and peach orchards under sustainable management, *Agric Water Mgt*, 195, 172-179, <https://doi.org/10.1016/j.agwat.2017.10.014>, 2018.
- 520 Pearson, K.: Note on regression and inheritance in the case of two parents, *Proceedings of the Royal Society of London*, 58, 240-242, doi: 10.1098/rsp1.1895.0041, 1895.
- Pérez-Jaramillo, J. E., de Hollander, M., Ramírez, C. A., Mendes, R., Raaijmakers, J. M., and Carrión, V. J.: Deciphering rhizosphere microbiome assembly of wild and modern common bean (*Phaseolus vulgaris*) in native and agricultural soils from Colombia, *Microbiome*, 7, 114, 10.1186/s40168-019-0727-1, 2019.
- 525 Preethi, B., Poorniammal, R., Balachandar, D., Karthikeyan, S., Chendrayan, K., Bhattacharyya, P., and Adhya, T. K.: Long-term organic nutrient managements foster the biological properties and carbon sequestering capability of a wetland rice soil, *Arch Agron Soil Sci*, 59, 1607-1624, 10.1080/03650340.2012.755260, 2012.
- Pulido, M., Schnabel, S., Contador, J. F. L., Lozano-Parra, J., and Gómez-Gutiérrez, Á.: Selecting indicators for assessing soil quality and degradation in rangelands of Extremadura (SW Spain), *Ecol Indic*, 74, 49-61, <https://doi.org/10.1016/j.ecolind.2016.11.016>, 2017.
- 530 Rahmanipour, F., Marzaioli, R., Bahrami, H. A., Fereidouni, Z., and Bandarabadi, S. R.: Assessment of soil quality indices in agricultural lands of Qazvin province, Iran, *Ecol Indic*, 40, 19-26, <https://doi.org/10.1016/j.ecolind.2013.12.003>, 2014.
- Rinot, O., Levy, G. J., Steinberger, Y., Svoray, T., and Eshel, G.: Soil health assessment: A critical review of current methodologies and a proposed new approach, *Science of The Total Environment*, 648, 1484-1491, <https://doi.org/10.1016/j.scitotenv.2018.08.259>, 2019.
- 535 Romig, D. E., Garlynd, M. J., Harris, R. F., and McSweeney, K.: How farmers assess soil health and quality, *J Soil Water conserv*, 50, 229-236, 1995.
- Rüdisser, J., Tasser, E., Peham, T., Meyer, E., and Tappeiner, U.: The dark side of biodiversity: Spatial application of the biological soil quality indicator (BSQ), *Ecol Indic*, 53, 240-246, <https://doi.org/10.1016/j.ecolind.2015.02.006>, 2015.
- 540 Schmidt, E. S., Villamil, M. B., and Amiotti, N. M.: Soil quality under conservation practices on farm operations of the southern semiarid pampas region of Argentina, *Soil Till Res*, 176, 85-94, <https://doi.org/10.1016/j.still.2017.11.001>, 2018.
- Stewart, R. D., Jian, J., Gyawali, A. J., Thomason, W. E., Badgley, B. D., Reiter, M. S., and Strickland, M. S.: What we talk about when we talk about soil health, *Agric Environ Lett*, 3, 10.2134/ael2018.06.0033, 2018.
- 545 Tamilselvi, S., Chinnadurai, C., Ilamurugu, K., Arulmozhiselvan, K., and Balachandar, D.: Effect of long-term nutrient managements on biological and biochemical properties of semi-arid tropical Alfisol during maize crop development stages, *Ecol Indic*, 48, 76-87, 2015.
- van der Bom, F., Nunes, I., Raymond, N. S., Hansen, V., Bonnicksen, L., Magid, J., Nybroe, O., and Jensen, L. S.: Long-term fertilisation form, level and duration affect the diversity, structure and functioning of soil microbial communities in the field, *Soil Biol Biochem*, 122, 91-103, 10.1016/j.soilbio.2018.04.003, 2018.
- 550 Vasu, D., Singh, S. K., Ray, S. K., Duraisami, V. P., Tiwary, P., Chandran, P., Nimkar, A. M., and Anantwar, S. G.: Soil quality index (SQI) as a tool to evaluate crop productivity in semi-arid Deccan plateau, India, *Geoderma*, 282, 70-79, <https://doi.org/10.1016/j.geoderma.2016.07.010>, 2016.
- Velásquez, E., Lavelle, P., and Andrade, M.: GISQ, a multifunctional indicator of soil quality, *Soil Biol Biochem*, 39, 3066-3080, <https://doi.org/10.1016/j.soilbio.2007.06.013>, 2007.
- 555 VeVerka, J. S., Udawatta, R. P., and Kremer, R. J.: Soil health indicator responses on Missouri claypan soils affected by landscape position, depth, and management practices, *J Soil Water conserv*, 74, 126-137, 10.2489/jswc.74.2.126, 2019.
- Vincent, Q., Auclerc, A., Beguiristain, T., and Leyval, C.: Assessment of derelict soil quality: Abiotic, biotic and functional approaches, *Science of The Total Environment*, 613-614, 990-1002, <https://doi.org/10.1016/j.scitotenv.2017.09.118>, 2018.
- 560 Visioli, G., Menta, C., Gardi, C., and Conti, F. D.: Metal toxicity and biodiversity in serpentine soils: Application of bioassay tests and microarthropod index, *Chemosphere*, 90, 1267-1273, <https://doi.org/10.1016/j.chemosphere.2012.09.081>, 2013.

- Walkley, A., and Black, I. a.: An examination of the Degtjareff method for determining soil organic matter, and a proposed modification of the chromic acid titration method, *Soil Sci*, 37, 29-38, 1934.
- Wienhold, B. J., Andrews, S., and Karlen, D.: Soil quality: a review of the science and experiences in the USA, *Environ Geochem Health*, 26, 89-95, <https://doi.org/10.1023/B:EGAH.0000039571.59640.3c>, 2004.
- 565 Wienhold, B. J., Karlen, D., Andrews, S., and Stott, D.: Protocol for indicator scoring in the soil management assessment framework (SMAF), *Renewable agriculture and food systems*, 24, 260-266, <https://doi.org/10.1017/S1742170509990093>, 2009.
- Williams, H., Colombi, T., and Keller, T.: The influence of soil management on soil health: An on-farm study in southern Sweden, *Geoderma*, 360, 114010, <https://doi.org/10.1016/j.geoderma.2019.114010>, 2020.
- 570 Wold, S., Esbensen, K., and Geladi, P.: Principal component analysis, *Chemometr Intell Lab Syst*, 2, 37-52, [https://doi.org/10.1016/0169-7439\(87\)80084-9](https://doi.org/10.1016/0169-7439(87)80084-9), 1987.
- Yang, C., Liu, N., and Zhang, Y.: Soil aggregates regulate the impact of soil bacterial and fungal communities on soil respiration, *Geoderma*, 337, 444-452, <https://doi.org/10.1016/j.geoderma.2018.10.002>, 2019.

Table 1. Study area and soil characteristics

| Details | Coimbatore | Madurai | Kovilpatti |
|--------------------------------|------------------------|---------------------|---------------------|
| Centre | TNAU, Coimbatore | AC & RI, Madurai | ARS, Kovilpatti |
| Geographical coordinates | 11°N, 77°E | 9.97°N, 78°E | 09.12°N, 77.53°E |
| Altitude | 426 m | 147 m | 106 m |
| Max and Min temperature | 34.2°C and 20°C | 32°C and 23°C | 36°C and 29°C |
| Annual rainfall | 670 mm | 1100 mm | 730 mm |
| Climate type | semi-arid sub-tropical | arid sub-tropical | semi-arid tropic |
| Year of establishment | 1909 | 1975 | 1982 |
| Test crop | Maize – Sunflower | Rice – Rice | Cotton |
| Cropping method | Irrigated | Wetland | Dryland |
| Variables | Nutrient management* | Nutrient management | Nutrient management |
| Soil texture | sandy loam | sandy clay loam | Clayey |
| Soil classification | Typic Haplustalfs | Typic Haplustalfs | Typic Chromustert |
| Initial soil characteristics | | | |
| pH | 8.30 | 7.1 | 8.1 |
| Electrical conductivity (dS/m) | 0.25 | 0.24 | 0.36 |
| Soil organic carbon (mg/g) | 2.90 | 6.40 | 3.10 |
| Available N (mg/kg) | 145.0 | 182.0 | 106.0 |
| Available P (mg/kg) | 4.8 | 13.4 | 3.1 |
| Available K (mg/kg) | 303.0 | 275.0 | 546.0 |

575 *The nutrient management adopted in each site are described in Materials and Methods.

Table 2. Soil biological quality indicators, their threshold values and corresponding score values used for SBQI-1

| Soil variable | Threshold values | Soil index scale (SIS) | Reference |
|---------------|------------------|---------------------------|--|
| SOC (mg/g) | >10 | 4 | (Lal, 2004) |
| | 8-10 | 3 | |
| | 6-8 | 2 | |
| | <6 | 1 | |
| MBC (µg/g) | >500 | 4 | (Chinnadurai et al., 2014b;Tamilselvi et al., 2015) |
| | 300-500 | 3 | |
| | 100-300 | 2 | |
| | <100 | 1 | |
| SLC (µg/g) | >500 | 4 | (Moebius-Clune et al., 2016) |
| | 300-500 | 3 | |
| | 100-300 | 2 | |
| | <100 | 1 | |
| SPI (µg/g) | >10 | 4 | (Moebius-Clune et al., 2016) |
| | 8-10 | 3 | |
| | 6-8 | 2 | |
| | <6 | 1 | |
| DHA (µg/g) | >30 | 4 | (Chinnadurai et al., 2014b;Tamilselvi et al., 2015) |
| | 20-30 | 3 | |
| | 20-10 | 2 | |
| | <10 | 1 | |
| SIR (µg/g) | >5 | 4 | (Chinnadurai et al., 2014b;Tamilselvi et al., 2015) |
| | 3-5 | 3 | |
| | 1-3 | 2 | |
| | <1 | 1 | |

SOC – Soil organic carbon; MBC – Microbial biomass carbon; SLC – Soil labile carbon; SPI – Soil protein index; DHA – Dehydrogenase; SIR – Substrate induced respiration. Threshold values are scaled as soil index scale ranged from 1 to 4 based on the literature.

Table 3. Pair of variables used for the quadrant plot and their mean and regression coefficient (R²)

| Variable-1 (major contributor) | Variable-2 (secondary contributor) | Mean of variable -1 | Mean of variable - 2 | R ² | P |
|--------------------------------------|--|---------------------|----------------------|----------------|--------|
| SOC | MBC | 7.29 | 382.51 | 0.237 | <0.001 |
| SOC | SLC | 7.29 | 480.30 | 0.417 | <0.001 |
| SOC | SIR | 7.29 | 3.20 | 0.409 | <0.001 |
| MBC | SPI | 382.51 | 5.46 | 0.089 | <0.001 |
| MBC | DHA | 382.51 | 11.51 | 0.259 | <0.001 |
| MBC | SIR | 382.51 | 3.20 | 0.337 | <0.001 |

SOC – Soil organic carbon; MBC – Microbial biomass carbon; SLC – Soil labile carbon; SPI – Soil protein index; DHA – Dehydrogenase; SIR – Substrate induced respiration.

Table 4. Correlation coefficient (Pearson, n-1) of the observed variables from long-term nutrient management soils

| Variables | SOC | MBC | SLC | SPI | DHA | SIR |
|-----------|--------|--------|--------|--------|--------|--------|
| SOC | 1.00 * | | | | | |
| MBC | 0.93 * | 1.00 * | | | | |
| SLC | 0.74 * | 0.85 * | 1.00 * | | | |
| SPI | 0.68 * | 0.51 | 0.10 | 1.00 * | | |
| DHA | 0.65 * | 0.81 * | 0.95 * | 0.05 | 1.00 * | |
| SIR | 0.80 * | 0.89 * | 0.93 * | 0.25 | 0.85 * | 1.00 * |

SOC – Soil organic carbon; MBC – Microbial biomass carbon; SLC – Soil labile carbon; SPI – Soil protein index; DHA – Dehydrogenase; SIR – Substrate induced respiration. * Correlation is significant at the 0.05 level.

Table 5. Regression analysis of soil variables assessed for long-term nutrient management adopted soils

| Independent variable | Dependent variable | R ² | F | P |
|----------------------|--------------------|----------------|--------|--------|
| SOC | MBC | 0.237 | 32.95 | <0.001 |
| SOC | SLC | 0.417 | 75.77 | <0.001 |
| SOC | SPI | 0.283 | 41.79 | <0.001 |
| SOC | DHA | 0.329 | 51.97 | <0.001 |
| SOC | SIR | 0.409 | 73.34 | <0.001 |
| MBC | SLC | 0.256 | 36.42 | <0.001 |
| MBC | SPI | 0.089 | 10.36 | 0.002 |
| MBC | DHA | 0.259 | 37.03 | <0.001 |
| MBC | SIR | 0.337 | 53.90 | <0.001 |
| SLC | SPI | 0.006 | 0.62 | 0.435 |
| SLC | DHA | 0.834 | 534.10 | <0.001 |
| SLC | SIR | 0.662 | 207.80 | <0.001 |
| SPI | DHA | 0.003 | 0.324 | 0.571 |
| SPI | SIR | 0.023 | 2.53 | 0.115 |
| DHA | SIR | 0.604 | 161.68 | <0.001 |

590 SOC – Soil organic carbon; MBC – Microbial biomass carbon; SLC – Soil labile carbon; SPI – Soil protein index; DHA – Dehydrogenase; SIR – Substrate induced respiration. R² – regression coefficient (linear); F – F test; P – p value.

Table 6. Soil biological quality index of long-term nutrient management adopted soils of three different centres assessed by five different methods (SBQI-1 to 5)

| Centre | Treatments | SBQI-1 | SBQI-2 | SBQI-3 | SBQI-4 | SBQI-5 |
|------------|------------|--------------------|--------------------|--------------------|--------------------|--------------------|
| Coimbatore | Control | 3.66 (\pm 0.40) | 2.62 (\pm 0.40) | 2.77 (\pm 0.55) | 2.34 (\pm 1.41) | 2.14 (\pm 0.74) |
| | IC | 4.07 (\pm 0.68) | 3.03 (\pm 0.68) | 3.43 (\pm 1.19) | 3.22 (\pm 1.99) | 2.86 (\pm 1.03) |
| | OM | 5.93 (\pm 0.46) | 4.88 (\pm 0.46) | 6.25 (\pm 0.53) | 4.89 (\pm 1.89) | 5.32 (\pm 0.86) |
| | INM | 6.62 (\pm 0.25) | 5.58 (\pm 0.25) | 7.13 (\pm 0.42) | 5.22 (\pm 0.86) | 6.43 (\pm 0.59) |
| Madurai | Control | 6.06 (\pm 0.37) | 5.02 (\pm 0.37) | 5.57 (\pm 0.61) | 5.02 (\pm 1.23) | 4.79 (\pm 1.16) |
| | IC | 6.53 (\pm 0.21) | 5.49 (\pm 0.21) | 6.90 (\pm 0.43) | 5.30 (\pm 1.43) | 5.74 (\pm 0.75) |
| | OM | 7.04 (\pm 0.39) | 6.00 (\pm 0.39) | 7.59 (\pm 0.53) | 6.05 (\pm 1.25) | 6.80 (\pm 0.34) |
| | INM | 7.31 (\pm 0.42) | 6.27 (\pm 0.42) | 8.39 (\pm 0.55) | 6.59 (\pm 1.29) | 6.79 (\pm 0.54) |
| Kovilpatti | Control | 3.43 (\pm 0.28) | 2.38 (\pm 0.28) | 1.73 (\pm 0.34) | 2.24 (\pm 1.16) | 1.94 (\pm 0.54) |
| | IC | 3.89 (\pm 0.36) | 2.85 (\pm 0.36) | 2.57 (\pm 0.55) | 2.47 (\pm 1.12) | 2.00 (\pm 0.53) |
| | OM | 4.49 (\pm 0.50) | 3.45 (\pm 0.50) | 3.42 (\pm 0.78) | 3.09 (\pm 1.31) | 2.92 (\pm 1.15) |
| | INM | 5.05 (\pm 0.67) | 4.01 (\pm 0.67) | 4.24 (\pm 1.21) | 4.02 (\pm 1.47) | 3.95 (\pm 1.26) |

Values are mean (\pm SD) of three replicates. Control - Unfertilized control soil; IC - Inorganic chemical fertilized soil; OM - Organically managed soil; INM - Integrated nutrient management enforced soil; SBQI1 - SBQI5 refers to the unitless 10-scaled soil biological quality index computed using six soil biological variables.

Table 7. SBQI values of farmers' soils measured by five different methods

| Farmers' field | SBQI-1 | SBQI-2 | SBQI-3 | SBQI-4 | SBQI-5 |
|----------------|--------|--------|--------|--------|--------|
| A | 3.33 | 2.89 | 1.59 | 1.69 | 2.02 |
| B | 3.75 | 3.31 | 2.06 | 2.22 | 1.76 |
| C | 4.17 | 3.73 | 1.72 | 1.80 | 1.76 |
| D | 3.33 | 2.89 | 2.05 | 2.18 | 1.76 |
| E | 4.58 | 4.14 | 2.33 | 2.46 | 2.02 |
| F | 4.17 | 3.73 | 2.40 | 2.56 | 2.12 |
| G | 5.00 | 4.56 | 2.91 | 3.12 | 2.12 |
| H | 3.33 | 2.89 | 1.22 | 1.25 | 1.86 |
| I | 5.42 | 4.98 | 2.45 | 2.60 | 2.12 |
| J | 3.75 | 3.31 | 1.81 | 1.90 | 2.02 |
| K | 3.33 | 2.89 | 1.45 | 1.50 | 1.76 |
| L | 3.75 | 3.31 | 1.68 | 1.77 | 2.02 |
| M | 5.00 | 4.56 | 2.28 | 2.37 | 2.12 |
| N | 5.42 | 4.98 | 2.61 | 2.72 | 2.12 |
| O | 4.58 | 4.14 | 2.95 | 3.14 | 2.12 |
| P | 3.75 | 3.31 | 1.55 | 1.64 | 2.02 |
| Q | 3.75 | 3.31 | 2.07 | 2.20 | 2.02 |
| R | 4.58 | 4.14 | 1.92 | 2.01 | 2.12 |
| S | 4.17 | 3.73 | 1.90 | 2.03 | 2.02 |
| T | 4.17 | 3.73 | 1.47 | 1.52 | 2.02 |
| U | 4.58 | 4.14 | 3.88 | 4.20 | 3.49 |
| V | 5.42 | 4.98 | 2.64 | 2.78 | 2.86 |
| W | 4.58 | 4.14 | 4.36 | 4.67 | 3.81 |
| X | 5.42 | 4.98 | 2.20 | 2.32 | 1.86 |
| Y | 4.58 | 4.14 | 4.98 | 5.36 | 3.91 |

SBQI-1 to SBQI-5 represents the unitless 10-scaled values of soil biological quality index calculated for the farmers' field soil using different methods as described earlier. Details of farmers' field soils are provided in Supplementary Table S1.

Table 8. Correlation coefficient (Pearson (n-1)) relating five different methods used to measure the soil biological quality index of long-term nutrient management adopted soils of three different agro-ecological zones and farmers' soils of Tamil Nadu

| SBQI methods | SBQI-1 | SBQI-2 | SBQI-3 | SBQI-4 | SBQI-5 |
|--------------|--------|--------|--------|--------|--------|
| SBQI-1 | 1.00 * | | | | |
| SBQI-2 | 0.99 * | 1.00 * | | | |
| SBQI-3 | 0.85 * | 0.75 * | 1.00 * | | |
| SBQI-4 | 0.82 * | 0.73 * | 0.99 * | 1.00 * | |
| SBQI-5 | 0.84 * | 0.73 * | 0.98 * | 0.94 * | 1.00 * |

SBQI-1 to SBQI-5 represents the unitless 10-scaled values of soil biological quality index calculated for the soil samples.

* Correlation is significant at the 0.05 level.

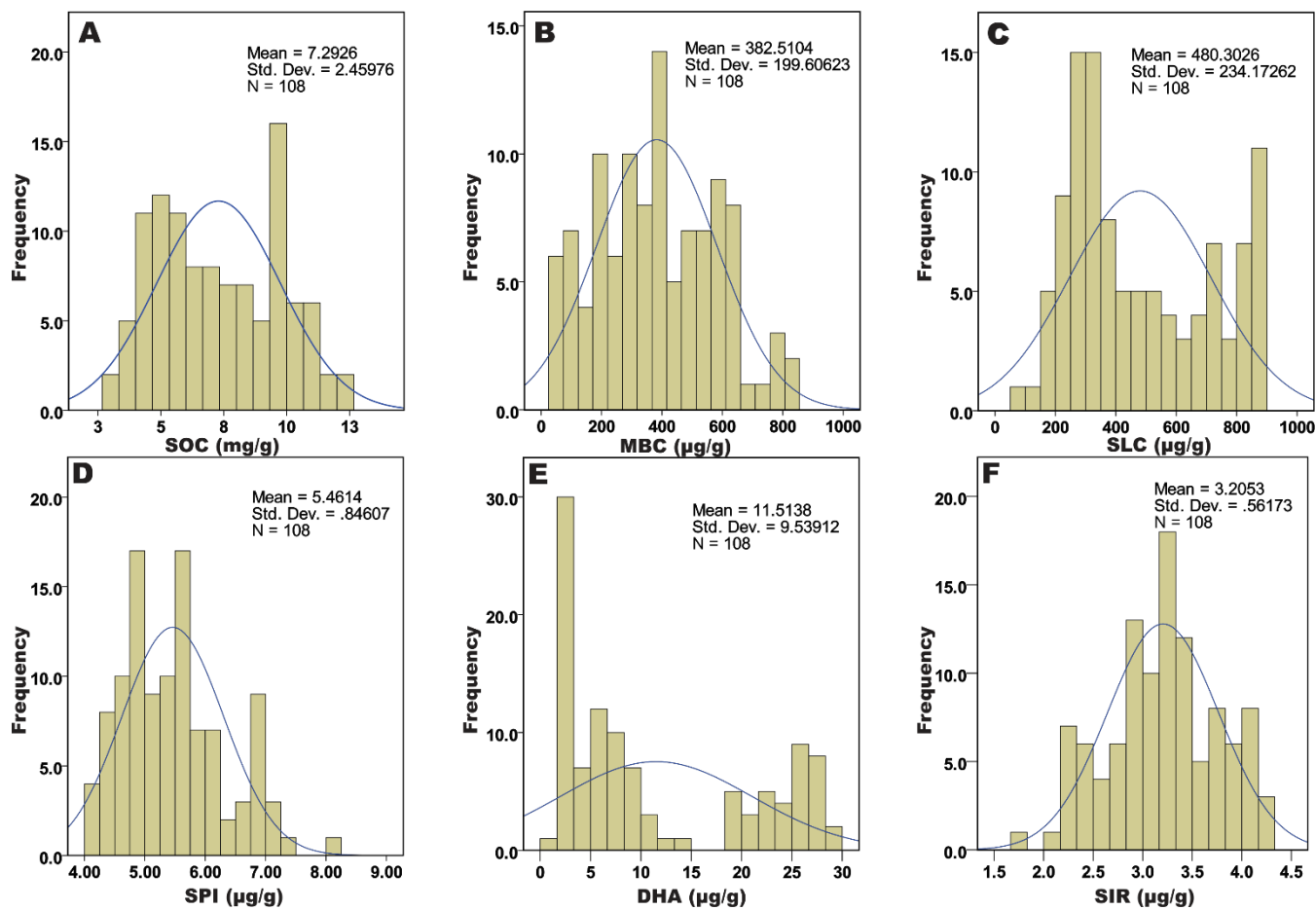


Fig. 1. Histogram and distribution curve (bell curve) of the observed soil biological variables from four different nutrient management plots of three different agro-climatic zones of Tamil Nadu, India. A - Soil organic carbon; B - Microbial biomass carbon; C - Soil labile carbon; D - Soil protein index; E - Dehydrogenase activity; F - Substrate-induced respiration.

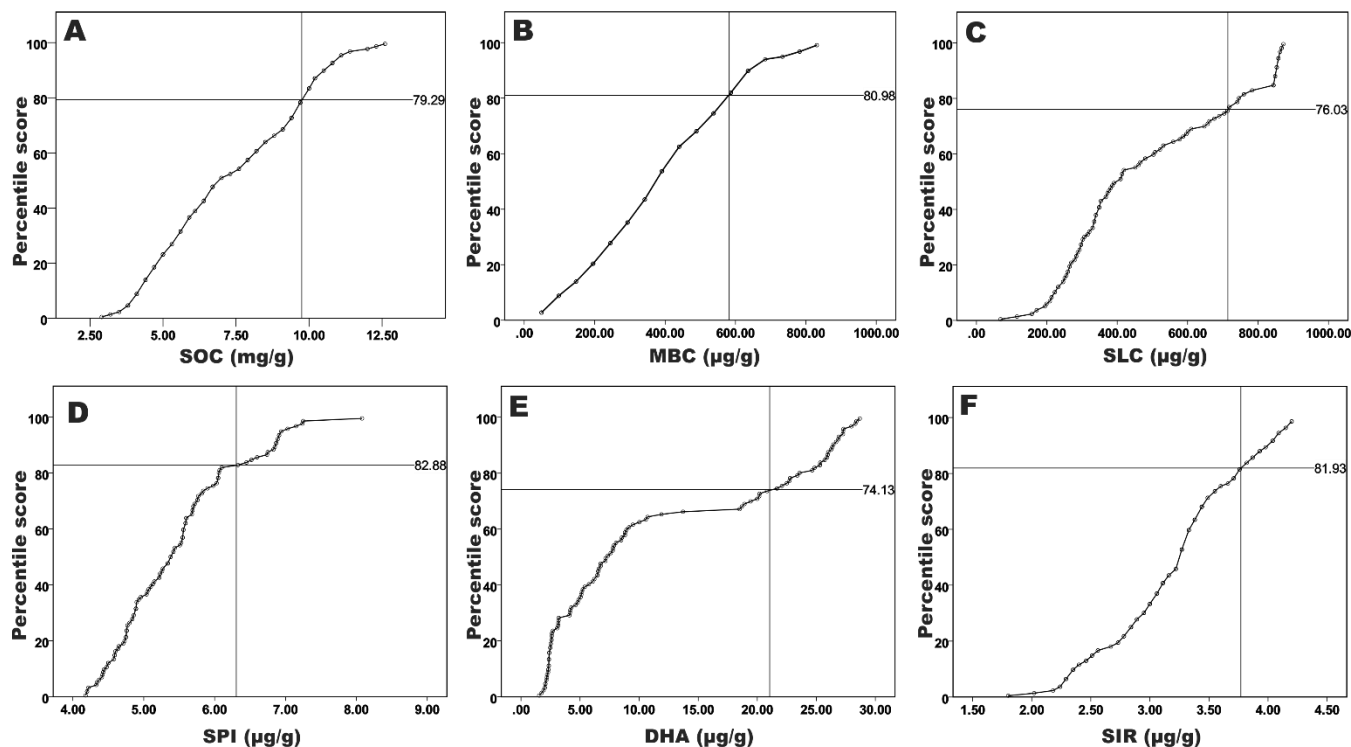


Fig. 2. Cumulative normal distribution for scoring the observed soil biological variables in four different nutrient management plots of three different agroclimatic zones of Tamil Nadu, India. A - Soil organic carbon; B - Microbial biomass carbon; C - Soil labile carbon; D - Soil protein index; E - Dehydrogenase activity; F - Substrate- induced respiration. In the distribution curve, the mean + SD of measured values were intercepted and the scoring percentile for each variable was calculated and presented in the corresponding plot.

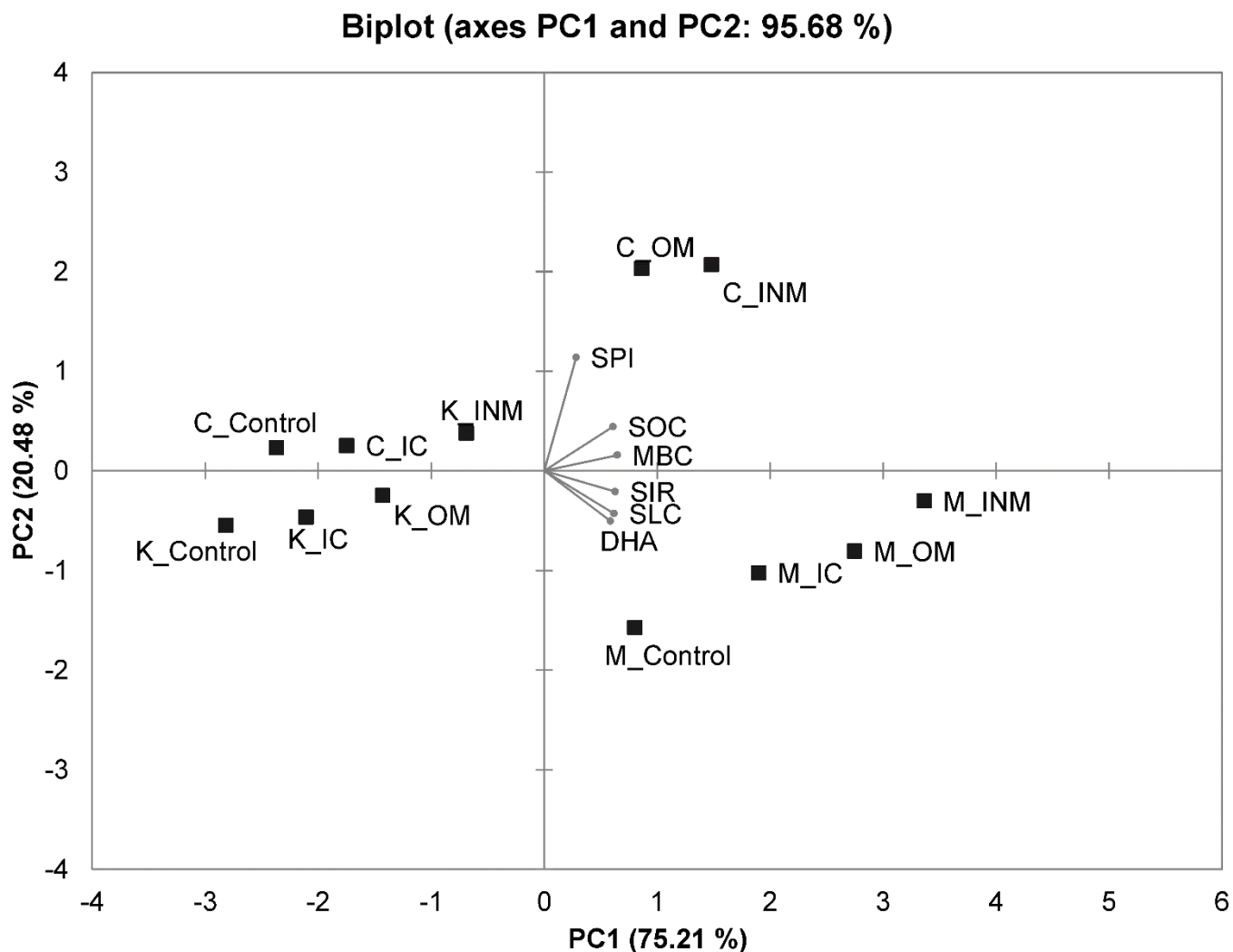


Fig. 3. Principal component analysis biplot showing the relation between the soil biological variables in four different nutrient management plots of three different agro-climatic zones of Tamil Nadu, India. SOC - Soil organic carbon; MBC - Microbial biomass carbon; SLC - Soil labile carbon; SPI - Soil protein index; DHA - Dehydrogenase activity; SIR- Substrate-induced respiration. Control - Unfertilized control soil; IC - Inorganic chemical fertilized soil; OM - Organically managed soil; INM - Integrated nutrient management enforced soil; C - Coimbatore; M - Madurai; K - Kovilpatti. The % variance explained by each component (PC1and PC2) is given in parentheses in axes.

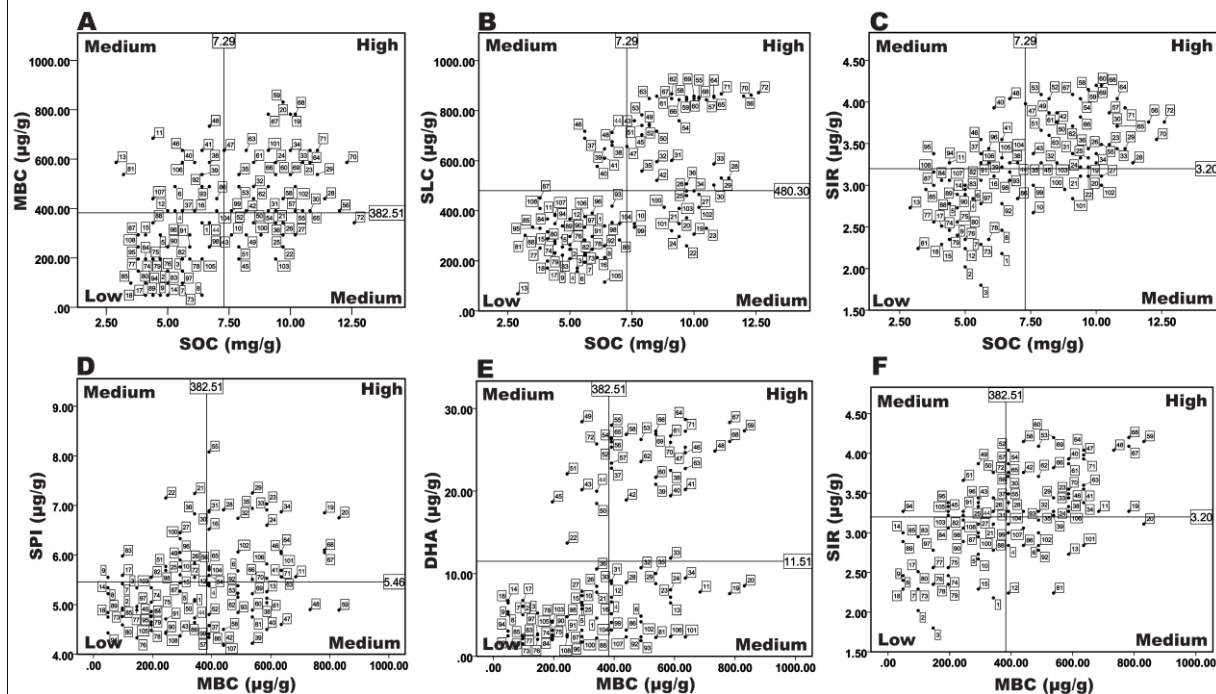


Fig. 4. Quadrant scatter plots showing the relatedness of the soil biological variables in four different nutrient management enforced soils of three different agro-climatic zones of Tamil Nadu. Each scatter plot is divided into quadrants based on the mean of the respective axis, which is indicated in the plot. Quadrant with 'High' represents both the variables are above the average; 'Medium' represents any one of the variables is below the average; 'Low' represents both the variables are below the average. The main variable is on the x-axis and the second variable for it is on the y-axis. 1-108 represents the soil samples.

Supplementary materials

Table S1. Details of the farmers' fields used in the present study to evaluate the soil biological quality index.

640 Table S2. Loading value and percent contribution of assessed soil variables on the axis identified by the principal component analysis.

Supplementary material spreadsheet_S1: Calculated SBQIs of long-term nutrient management enforced soils.

