

Author's response, SOIL 2018-17, McGivney et al.

We would like to thank the reviewers for many good comments, which helped us to improve the quality of the manuscript. Below we provide a point-by-point response to the comments of all reviewers.

Reviewer 1

RE1 = referee 1 ; AU = author's response, (y) = comment no. y

RE1(1): It is not clear exactly what the purpose of the study is. Is it to demonstrate the utility of the HD-MINTEQ model for the projection of future soil chemistry under different forest management practices, to specifically make projections that can inform forest management practice or a combination of both? The manner in which the paper is written suggests largely the latter, in which case I have reservations regarding the confidence that can be placed in the model as currently constructed as a comprehensive predictor of soil and soil solution chemistry. The lack of a specific submodel for N species transformations is in my opinion a potentially significant shortcoming.

AU(1): We have added the following sentences to the end of the introduction to clarify the objective of our paper:

“The objectives of this paper are to (i) investigate possible long-term impacts of two theoretical future harvesting scenarios on the acidification and base cation status using a novel dynamic model, HD-MINTEQ, and (ii) compare biomass-induced acidification to the historical acidification that took place during the 20th century due to acid rain.”

We have also changed some of the language in the discussion section to deemphasize these simulations as a comprehensive predictor of soil chemistry—that was not the intent of our paper. One sentence that exemplifies our stance on this follows:

“However, because the HD-MINTEQ simulations here produced stronger effects on soil Ca compared to those observed in the field (Zetterberg et al., 2016), it seems probable that the acidification effect as predicted by HD-MINTEQ may be regarded as a ‘worst-case scenario’, and that the real acidification, at least over the first rotation period, may be even smaller.”

We would also like to point out our admitted shortcoming concerning N cycling:

“However, at this point it needs to be added that these conclusions may not be relevant in cases when nitrification following harvest is substantial, in which case the acidification effect could be considerably larger; this possibility was not considered in our simulations.”

RE1(2): It is not clear what specifically is new about this work in the context of modelling soil and soil solution chemistry. The model is state of the art for its description of ion-organic matter equilibrium interactions and the description of BC weathering, but it falls somewhat short of the state of the art in other areas.

AU(2): The unique aspect of this work is the comparison between the acidification effect of historical S deposition, and the effect that can be expected from forest harvesting. We have tried to clarify this a little more, especially in the Conclusions section, which is partly rephrased to highlight this in a better way.

RE1(3): Given these acknowledged shortcomings of the model, it would seem appropriate to me to place more emphasis than has been placed, on assessing the ability of the model to predict the trends and/or magnitudes in soil and soil solution chemistry. The results and discussion section effectively takes the model predictions as ‘correct’ in its assessment of future trends.

AU(3): Thanks for pointing this out. It was certainly not our intent to push this model off as 100% correct. We have made some changes to the language to clarify that these were modeled simulations and that there are of course limitations to them. Below are some examples that will be found in the revised text:

“...because the HD-MINTEQ simulations here produced stronger effects on soil Ca compared to those observed in the field (Zetterberg et al., 2016), it seems probable that the acidification effect as predicted by HD-MINTEQ may be regarded as a ‘worst-case scenario’, and that the real acidification, at least over the first rotation period, may be even smaller.”

“...at this point it needs to be added that these conclusions may not be relevant in cases when nitrification following harvest is substantial, in which case the acidification effect could be considerably larger; this possibility was not considered in our simulations. Most Swedish forests are N-limited (Högberg et al., 2017), but increased nitrate concentrations are found in soil solution for some years after final felling. Nitrification is dependent on site productivity, which is between 4 and 8 m³ ha⁻¹ yr⁻¹ in the sites studied. According to the estimates of Futter et al. (2010), the total accumulated harvest effect should generally not exceed 220 and 500 meq NO₃⁻ m⁻² for site productivities of 4 and 8 m³ ha⁻¹ yr⁻¹, respectively (Futter et al., 2010), indicating rather modest nitrification effects on the long-term acid-base status of the soils. As an example, this value represents between 5 and 15 % of the atmospherically deposited BC over a full rotation period, hence nitrification is a relatively minor proton source as compared to other processes in the forest soils under study.”

RE1(4): I feel that the paper would be strengthened by an assessment of the model capabilities alongside the discussion of the future projections, coupled with an assessment of where the model could be strengthened e.g. a better description of N transformations (or, of course, arguments as to why such ‘improvements’ would not greatly improve predictions!).

AU(4): We have tried to improve the text (i) by providing more discussion on the reasons behind the differences between model and observations, and (ii) by identifying areas where the model can be strengthened. As concerns the first of these aspects, we have provided new text towards the end of section 3.1, as follows:

“For the Gårdsjön and Kindla sites, the modelled results align well with the lysimeter data, with a few exceptions. Interestingly, the model underestimated Mg²⁺ concentrations at both sites. This could be caused by the use of A2M estimates, i.e., that the normalization model underestimated the presence of easily weathered Mg-containing minerals. In a recent study, Casetou-Gustafson et al. (2018) compared A2M with the mineralogy obtained by X-ray powder diffraction (XRPD) for two soils that were similar to the soils studied here. They found that trioctahedral mica and hydrobiotite were consistently underestimated by A2M, which is consistent with our modelling results as these Mg-containing minerals have relatively high weathering rates. Moreover at Kindla, SO₄²⁻ concentrations were underestimated.

There may be several explanations, but one possibility is mineralization and oxidation of organically bound S (Löfgren et al., 2001, 2014). The delay in SO_4^{2-} decrease at Kindla was, however, predicted well in the B1 horizon of the model.

For the Aneboda site, the discrepancies between model and observations were more substantial. For example, while SO_4^{2-} and pH were grossly underestimated, Ca^{2+} and Mg^{2+} were overestimated. It is important to note that the lysimeter data plotted in Figures 1, 2 and 3 (previously 3, 4 and 5) are averages based on data from several lysimeters, and it has previously been observed that there are large variations in the results of individual lysimeters at the Aneboda site (Löfgren et al., 2010; Löfgren et al., 2011; Löfgren et al., 2014). As an example, for the B horizon the averaged results are based on 8 lysimeters. Three of these, nos. 7102, 7104 and 7105, had results that were clearly divergent from the others (new Fig. S4, Supplement). Dissolved SO_4^{2-} , Ca^{2+} and Mg^{2+} were all considerably higher, whereas the pH was lower. Possible reasons include a net mineralization and oxidation of organically bound sulphur in response to decreased S deposition (Löfgren et al., 2001, 2014), a process which was not taken into account in the model. It may also be observed that if the results from the three lysimeters were removed, there would be a clearly improved agreement between the model and the observations.”

Discussion of possible improvements is provided in the final part of section 3.3, as follows;

“Although the HD-MINTEQ model provided simulation results that appear reasonable, a future task is to upgrade the model to include N transformations, so that the effects arising from e.g. N deposition and nitrification can be more accurately assessed than was possible in the current work. Further, improved estimates of the mineralogical composition through e.g. X-ray diffraction would be desirable to avoid the mismatch in individual base cations, as was observed for Mg^{2+} .”

RE1(5): Finally (and returning somewhat towards my first bullet point) I cannot see any broader context - why is there a need to make these predictions in the first place? For example, can the results tell us anything about the effects of different future management practices on forest viability? I appreciate that this is somewhat beyond the scope of this paper as it relates to relationships between soil chemistry and tree growth/performance, but I do feel that some broader context is needed to emphasise the importance and usefulness of this work.

AU(5): As should now be clear from the objectives, our focus is not to present a toolbox for accurately predicting the effects of different future management practices, but rather to contribute to the discussion of these impacts by comparing different scenarios with a simplified model, by for example comparing these effects to those of historical acid rain.

RE1(6): p3 line 23. How is the supply of N species concentrations realised over the whole simulation period? It is currently unclear how exactly N species are handled.

AU(6): It is held constant according to the values in Table 1. We have added the following text to clarify this: “HD-MINTEQ does not simulate N chemistry; instead dissolved NH_4^+ and NO_3^- in the different horizons are given as input data, and are held constant (Table 1)”

RE1(7): p3 line 24. It is not clear what is meant by ‘The soil pools of Al and organic C were assumed to be constant over the simulated time period. Does this mean that losses of Al and C in drainage are assumed to be completely replenished? Does the soil pool of Al mean the geochemically active pool, or is there a non-reactive component that supplies active Al by weathering?’

AU(7): Yes, Al and C are assumed to be completely replenished, and the soil pool of Al does refer to the geochemically active pool. We have included the word “geochemically active” to clarify the last point, also see model description in Löfgren et al. (2017), which is cited in the paper.

RE1(8): p5 line 10. Why was ForSAFE only used at Gårdsjön?

AU(8): For the purpose of this work we have relied on parameterisations made previously by two different research groups, by Belyazid and Moldan (2009) for the Gårdsjön site and by Zetterberg et al. (2014) for the two other sites. In the latter case, ProdMod was used to estimate uptake values, as is written in the text.

RE1(9): p7, line 4. It is unclear what is meant by uneven depletion rates or how the BC uptake rates were adjusted to compensate for this. Section 2.6. My interpretation is that pH was not used in calibration? This seems unusual given the importance of pH changes as a consequence of soil management and acidification/recovery. Why was this not done?

AU(9): It was. Lysimeter pH measurements were used to calibrate the model. BC concentrations were adjusted to achieve modeled pH values that matched empirical pH values. This has been added to the text in section 2.6:

“The modeled values of pH, dissolved inorganic Al and other BC concentrations from 1993 to 2014 were then compared to soil solution data from the same period taken from various depths and binned into either horizon O, E, or B before being plotted.”

RE1(10): Section 3 (Results and discussion). There appears to be no comparison of the model predictions of pH, BC and sulphate with the observations. This to me is a serious omission since the usefulness of the model in predicting the future effects of forest management depends critically on its ability to predict how the soil chemistry has responded to changing inputs and management in the past. Does the model predict the trends and/or magnitudes of the observations over time to a degree that provides sufficient confidence for it to be a useful tool for investigating the projecting future trends? If not, can potential reasons for discrepancies be suggested and means to further develop the model to address such reasons be proposed?

AU(10): We have including new texts concerning the comparisons of model predictions with observations. C.f. replies and texts in response to comments 4 and 9.

RE1(11): p10, line 4 onwards. As an explanation of a modification to the model in the light of initial runs, this discussion would be better placed close to the model calibration section.

AU(11): Agreed, we have moved this text to section 2.6, immediately after the description of how the model was calibrated.

RE1(12): Figures 3-5. It is somewhat difficult to follow the graphs but my impression is that pH in B1&B2 is modelled as being consistently higher than pH in E, but that the observations suggest that pH is either quite similar in both horizons or tends to be higher in E. This is an example where the model capabilities need to be assessed against the observations - is the model a useful tool for assessing what is being projected here?

AU(12): The pH values in B1 and B2 were consistently higher than pH in E, both for the observations and for the model. The captions were wrong! We have changed Figures 1-3 (previously 4-6) to correct this.

RE1(13): Figures 3-5. It is rather difficult to match observations and model results on those panels where observations are present. I suggest redrawing to make the connection more obvious - a simple way would be to colour the observation points according to horizon in the same way as the model lines (though the B1/B2 lines might need to be recoloured also).

AU(13): We thank the reviewer for the comment. We have changed the colors of the observed data markers to match the modeled horizon in Figures 1, 2, and 3 (previously 3, 4, and 5).

RE1(14): Figures 3-5. The symbols noted in the captions do not correspond with those on the graphs - specifically the graphs have crosses, which are not listed in the captions. This needs correction. I've assumed that crosses are supposed to be open squares.

AU(14): We have made these changes, thank you.

Reviewer 2

RE2 = referee 2 ; AU = author's response, (y) = comment no. y

RE2(1): In their manuscript, the authors apply an advanced model, HD-MINTEQ, to model the impact of acid rain and forest harvest intensity on soil acidification, in particular base cation status. Soil acidification is an important global issue that sometimes seems a bit drowned in the attention for soil C cycling but is very relevant indeed. As such the study is of broader interest to the community of SOIL. The study overall seems to have been well conducted in a sound, scientific manner and the write-up and presentation is very good. One exception is the figures: because they are effectively a multitude of figures combined in 7 larger ones they are quite small and not always immediately comprehensible. This can relatively easily be amended by reducing some of the figures, or perhaps moving some to the supplementary material.

AU(1): We agree to reducing the number of figures in the main text, so we suggest moving Fig. 1 and Fig. 2 to the Supplement. The figures have been renumbered as a consequence. Multiple panes are required because there are 3 sites being studied, and within these sites, multiple parameters.

RE2(2): While the study in its core is well conducted, there is however one significant issue lacking and that is linking the study to the wider context. As said, soil acidification is a global issue of great importance. However, in their combined results and discussion section, and even their conclusions, the authors limit themselves to describing the results from the studied Swedish sites only. No real attempt is made to place the results in a broader context, or even to extensively discuss them in the context of other work on soil acidification in relation to forest harvest practices. As a result the reader is left to wonder what the significance of it all is. What do the modelling results mean for soil acidification globally?

AU(2): We have included the following text towards the end of the Discussion, immediately before Conclusions:

“Although the model was parameterized for three Swedish forest sites, the main trends are likely to be valid also for forest soils in other parts of the world, i.e. that forest management practices are not likely to result in strong acidification effects within one full rotation period. However, these results should not be extrapolated to longer time perspectives, as certain drivers of the model may be increasingly uncertain with time. For example, it is not known to what extent the base cation uptake behavior will differ between NH, CH and WTH scenarios over a period of several rotations.”

RE2(3): Why is this model better than existing approaches, e.g. the ProdMod and ForSAFE models mentioned in the introduction? Can the HD-MINTEQ model be applied to other forest settings around the globe? If not, what is the remaining knowledge gap to be addressed? Such questions need to be addressed, and this will mean a significant overhaul and extension of the results & discussion (perhaps better to separate both into two sections), and the conclusions. As no new data is needed for this, this should be feasible, but it does mean major revisions, which is therefore my recommendation.

AU(3): ProdMod is not a dynamic acidification model that can be used for this. The advantage of using HD-MINTEQ over ForSAFE is its state-of-the-art descriptions of base cation and aluminium chemistry. This was mentioned already in the first manuscript version, but this has now been further clarified towards the end of the Introduction, in the following sentence:

“An advantage of using the HD-MINTEQ model over e.g. ForSAFE and MAGIC is that the former is based on state-of-the-art descriptions of aluminium (Al) and base cation (BC) chemistry, which are probably more accurate (Gustafsson et al., 2018).”

As indicated here, these aspects are more fully discussed in a companion paper. As regards the applicability of the model to other forest ecosystems, there is nothing that prevents it from being used also there. The same pros and cons (i.e. the omission of the N chemistry) will be relevant. See also the new text in response to comment no. 2.

Reviewer 3

RE3 = referee 3 ; AU = author's response, (y) = comment no. y

RE3(1): However, the main question I have is whether the actual values reported are in any way meaningful. Throughout the paper the authors report changes that are relatively small (e.g. “At Aneboda, the pH across all horizons dropped by an average 0.13 (WTH) and 0.12 units (CH) compared to the NH scenario by the year 2080”). However when I look at the calibration figures and simulation figures (3-5) it is quite clear to me that parameters such as pH and base cations are very poorly matched. For example, Figure 3b shows simulated Mg in soil solution and observed values for the various horizons – they don't match very well and I don't see any clear separation of the observed data by horizon.

AU(1): Thank you for this comment. You are correct that we should have provided a discussion of why the model predictions did not always agree with the observations, we regret that we didn't in the first version of the manuscript. For Aneboda the results from individual lysimeters differ considerably, which is important to note when addressing the discrepancies, and therefore we have included a new supplemental figure (S4) that shows the individual lysimeter results. We have now included text towards the end of section 3.1 that addresses these issues, as follows:

“For the Gårdsjön and Kindla sites, the modelled results align well with the lysimeter data, with a few exceptions. Interestingly, the model underestimated Mg^{2+} concentrations at both sites. This could be

caused by the use of A2M estimates, i.e., that the normalization model underestimated the presence of easily weathered Mg-containing minerals. In a recent study, Casetou-Gustafson et al. (2018) compared A2M with the mineralogy obtained by X-ray powder diffraction (XRPD) for two soils that were similar to the soils studied here. They found that trioctahedral mica and hydrobiotite were consistently underestimated by A2M, which is consistent with our modelling results as these Mg-containing minerals have relatively high weathering rates. Moreover at Kindla, SO_4^{2-} concentrations were underestimated. There may be several explanations, but one possibility is mineralization and oxidation of organically bound S (Löfgren et al., 2001, 2014). The delay in SO_4^{2-} decrease at Kindla was, however, predicted well in the B1 horizon of the model.

For the Aneboda site, the discrepancies between model and observations were more substantial. For example, while SO_4^{2-} and pH were grossly underestimated, Ca^{2+} and Mg^{2+} were overestimated. It is important to note that the lysimeter data plotted in Figures 1, 2 and 3 (previously 3, 4 and 5) are averages based on data from several lysimeters, and it has previously been observed that there are large variations in the results of individual lysimeters at the Aneboda site (Löfgren et al., 2010; Löfgren et al., 2011; Löfgren et al., 2014). As an example, for the B horizon the averaged results are based on 8 lysimeters. Three of these, nos. 7102, 7104 and 7105, had results that were clearly divergent from the others (Fig. S4, Supplement). Dissolved SO_4^{2-} , Ca^{2+} and Mg^{2+} were all considerably higher, whereas the pH was lower. Possible reasons include a net mineralization and oxidation of organically bound sulphur in response to decreased S deposition (Löfgren et al., 2001, 2014), a process which was not taken into account in the model. It may also be observed that if the results from the three lysimeters were removed, there would be a clearly improved agreement between the model and the observations.”

RE3(2): Likewise, there is no Al^{3+} chemistry shown nor any description of how well the model simulations match the observed chemistry for the various soil horizons.

AU(2): In this case, the reason is that there were no measured Al^{3+} lysimeter data available.

RE3(3): Hence, the authors have a model that performs as expected but I have no confidence in the actual numbers nor the timeframe of the reported changes. Without a detailed evaluation of the model performance that provides the reader with some confidence that the simulated changes are in any way meaningful I cannot recommend that this paper should be published.

AU(3): As mentioned in the response to comment no. 2, we have now provided additional discussion of the model performance. Moreover, we never intended to give the impression that we thought our model was perfect. We do believe, however, that the model gives an idea of the direction of the changes, and of the relative significance of acid rain and forest harvesting, as the underlying chemical processes are well known and integrated into the model (with the exception of N). However, we have now included text that underlines the uncertainty of the model, above all in the following text in section 3.2:

“The absolute magnitude of the model-predicted changes is of course uncertain, not least in the light of the mixed success of the model to predict the available lysimeter data, as discussed in the previous section. Nevertheless, the simulated results suggest that the acidification due to a harvesting event at 2020 would be less impactful, over the time range studied, than that of historic atmospheric acidification.”

RE3(4): Section 2.6 describes model calibration but looking at the figures it seems to be a very poor match for the various horizons.

AU(4): See response to comment no. 1

RE3(5): Quality of Figures is poor.

AU(5): High quality images have been uploaded.

RE3(6): The authors show several spikes in soil solution chemistry but these cannot be validated.

AU(6): The spikes are reported also in previous studies and have been mentioned in the manuscript:

Line 19, page 7: “The anomalous blip in pH (and BC) at Aneboda occurring between 2008 and 2018 is the result of a large storm that downed many trees in 2005, followed by a bark beetle infestation, resulting in acidification and increased dissolved Ca^{2+} (Löfgren et al., 2014). “

Line 31, page 4: “The dips in deposition at Gårdsjön in the early 1900s and Kindla around 1890 were due to historical harvesting events. The dips that occur in 2020 were due to the simulated harvest scenarios.”

RE3(7): There is no real discussion – the results/discussion section is primarily a description of the simulations and how the model is parameterized.

AU(7): See response to comments no. 1 and 3

RE3(8): The reported weathering rate changes (see Figure 6 and 7) are so small as to be insignificant compared with other inputs/outputs (deposition/plant uptake) and of course there is no way of knowing whether this is actually happening (assumes PROFILE is correct).

AU(8): Thank you for bringing this up, the changes are indeed very small in comparison to other inputs and outputs. We have considered this more closely, and you are quite right that the main message of this part of the manuscript should more logically be that the model-predicted weathering rates remained more or less the same, both during the historic acidification era and during the harvest scenarios. This has prompted us to rewrite certain sections in which we discuss these results, e.g., as follows:

Abstract, last lines: “In general, the predicted changes in weathering rates were very small, which can be explained by the net effect of decreased pH and increased Al^{3+} , which affected the weathering rate in opposite ways. Similarly, weathering rates after the harvesting scenarios in 2020 remained largely unchanged according to the model.”

Section 3.3: “During the historic acidification period, the annual weathering rates at several sites and horizons (Aneboda: E; Gårdsjön: E, B1, and B2; Kindla: B1 and B2) actually decreased (Fig. S5), although not by much. This is due to the brakes in the weathering function (i.e. from Al^{3+} and BC, Eqs. 2 and 3) and to the fact that total dissolved Al and BC were much higher during this period (Figs. 1, 2 and 3). In other words, the increased weathering rate expected from a decreased pH was offset by the increase in dissolved Al and BC, resulting in a very small net effect, which according to PROFILE was negative. However, the exact patterns varied from site to site, and from layer to layer. The low weathering rates in the E horizon at Gårdsjön were likely due to its mineralogy, i.e., minerals other than quartz, K-feldspar, and plagioclase were essentially absent from the E horizon, but they were present further down in the profile. Another factor leading to low weathering rates in the Gårdsjön E horizon was the relatively thin layer thickness.

Contrary to the decrease in weathering rates during the historic acidification of the 1970s, the simulated weathering rates after the harvesting scenarios at 2020 generally increased compared to NH by 2080 (Fig. 5) although again, the net change was very small. However, the dynamics were quite different across each layer and site. The B1 horizon at Aneboda saw the strongest increase in weathering rates after harvesting, increasing by 9% (CH) and 11% (WTH) by 2080 compared to the NH scenario. The other horizons at Aneboda (E and B2) had almost unchanged weathering rates (<2% increase by 2080 compared to a NH scenario). It is worth noting that the difference between harvesting events and NH at the Aneboda B1 and B2 horizons would likely continue to diverge beyond 2080. At Aneboda, by the year 2080, the sum of weathered BC for the CH and WTH scenarios were 32 (CH) and 46 (WTH) meq m⁻² higher, respectively, than the BC weathered in the NH scenario (Fig. S6). To put this into perspective, this difference is equivalent to only 1.1 % and 1.7 %, respectively, of the atmospherically deposited BC in the WTH plots over the same period. Such a small change in the weathering rate cannot be experimentally verified, and is unlikely to be of any ecological significance.”

Consequential changes were made also in the remaining part of section 3.3, when discussing the results of Gårdsjön and Kindla, and also in the Conclusions.

RE3(9): Ignoring N dynamics is an issue – trees take up N and it can change both because of deposition and/or harvesting.

AU(9) To what extent this is an issue depends largely on to what extent nitrification (and subsequent nitrate release) is occurring. We acknowledged this already in the first version of the manuscript, but to make it clearer we have also added more text discussing this. Here are some examples:

Section 2.6, immediately before Results and Discussion: “However, at this point it needs to be added that these conclusions may not be relevant in cases when nitrification following harvest is substantial, in which case the acidification effect could be considerably larger; this possibility was not considered in our simulations. Most Swedish forests are N-limited (Högberg et al., 2017), but increased nitrate concentrations are found in soil solution for some years after final felling. Nitrification is dependent on site productivity, which is between 4 and 8 m³ ha⁻¹ yr⁻¹ in the sites studied. According to the estimates of Futter et al. (2010), the total accumulated harvest effect should generally not exceed 220 and 500 meq NO₃⁻ m⁻² for site productivities of 4 and 8 m³ ha⁻¹ yr⁻¹, respectively (Futter et al., 2010), indicating rather modest nitrification effects on the long-term acid-base status of the soils. As an example, this value represents between 5 and 15 % of the atmospherically deposited BC over a full rotation period, hence nitrification is a relatively minor proton source as compared to other processes in the forest soils under study.”

Page 13, lines 15-18: “As mentioned previously, limitations in the model prevented us from addressing possible nitrification effects resulting from long-term N deposition, which may influence these results. A future task is to upgrade the HD-MINTEQ model to include N transformations, so that the effects arising from e.g. N deposition and nitrification can be more accurately assessed.”

RE3(10): Conclusions – first sentence depends where in the world you are.

AU(10): This sentence has been removed, as its statement was debatable and in addition not necessary for the paper.

Assessing the impact of acid rain and forest harvest intensity with the HD-MINTEQ model – Soil chemistry of three Swedish conifer sites from 1880 to 2080

5 Eric McGivney^{1,a}, Jon Petter Gustafsson^{1,2}, Salim Belyazid³, Therese Zetterberg⁴, Stefan Löfgren⁵

¹Department of Sustainable Development, Environmental Science and Engineering, KTH Royal Institute of Technology, Teknikringen 10B, 100 44, Stockholm, Sweden.

10 ²Department of Soil and Environment, Swedish University of Agricultural Sciences, P.O. Box 7014, SE-750 07 Uppsala, Sweden.

³Department of Physical Geography, Stockholm University, SE-106 91 Stockholm, Sweden

⁴IVL Swedish Environmental Research Institute Ltd., P.O. Box 53021, SE-400 14 Göteborg, Sweden

⁵Department of Aquatic Sciences and Assessment, Swedish University of Agricultural Sciences, P.O. Box 7050, SE-750 07 Uppsala, Sweden

15 ^aCurrent address: Department of Environmental Science and Analytical Chemistry (ACES), Stockholm University, SE-106 91 Stockholm, Sweden

Correspondence: Jon Petter Gustafsson (gustafjp@kth.se)

20 **Abstract.** Forest soils are susceptible to anthropogenic acidification. In the past, acid rain was a major contributor to soil acidification, but now that atmospheric levels of S have dramatically declined, concern has shifted towards biomass-induced acidification, i.e., decreasing soil solution pH due to tree growth and harvesting events that permanently remove base cations (BC) from forest stands. We use a novel dynamic model, HD-MINTEQ, to investigate possible long-term impacts of two theoretical future harvesting scenarios in the year 2020, a conventional harvest (CH, which removes stems only) and a whole-tree harvest (WTH, which removes 100% of the above-ground biomass except for stumps), on soil chemistry and weathering rates at three different Swedish forest sites (Aneboda, Gårdsjön, and Kindla). Furthermore, acidification following the harvesting events is compared to the historical acidification that took place during the 20th century due to acid rain. Our results show that historical acidification due to acid rain had a larger impact on pore water chemistry and mineral weathering than tree growth and harvesting, at least if nitrification remained at a low level. However, compared to a no-harvest baseline, WTH and CH significantly impacted soil chemistry. Directly after a harvesting event (CH or WTH), the soil solution pH sharply increased for 5 to 10 years before slowly declining over the remainder of the simulation (until year 2080). WTH acidified soils

25
30

slightly more than CH, but in certain soil horizons, there was practically no difference by the year 2080. Even though the pH in the WTH and CH scenario decreased with time as compared to the no harvest scenario (NH), they did not drop to the levels observed around the peak of historic acidification (1980-1990), indicating that the pH decrease due to tree growth and harvesting would be less impactful than that of historic atmospheric acidification. Weathering rates differed across locations and horizons in response to historic acidification. In general, the predicted changes in weathering rates were very small, which can be explained by the net effect of decreased pH and increased Al^{3+} , which affected the weathering rate in opposite ways. Similarly, weathering rates after the harvesting scenarios in 2020 remained largely unchanged according to the model.

1. Introduction

Anthropogenic acidification has an impact on soils, streams, organisms, agriculture, and forestry. The acidification of soils is influenced by both vegetation growth and atmospheric deposition. During the 20th century, sulphur (S) deposition, which peaked in the 1980s, was the primary source of acidification in the acidic forest soils of the northern hemisphere (van Breemen et al., 1984). However, now that S deposition has dropped to around the 1930s level throughout Western Europe (Bertills et al., 2007; Engardt et al., 2017), focus has shifted towards understanding forest soil dynamics in response to forest biomass production and different harvesting scenarios (Akselsson et al., 2007; Iwald et al., 2013; de Jong et al., 2017).

Tree growth acidifies the soil through the net uptake of cations over anions, which results in an accumulation of H^+ in the form of organic acids (Nilsson et al., 1982). Forests that are recurrently harvested for lumber and paper production are especially susceptible to biomass-induced acidification, such as those in northern Europe. Mass balance calculations show considerable losses of base cations Ca^{2+} , Mg^{2+} , Na^+ , and K^+ (BC) due to forest management practices, which may have strong acidifying effects on soils of base-poor mineralogy (Akselsson et al., 2007; Iwald et al., 2013). Therefore, there is a need to develop sustainable forestry practices in which the net losses of BC are minimized to avoid acidification and long-term depletion of BC (Vadeboncoeur et al., 2014).

Models that can accurately predict forest soil chemistry based on uptake trends, plant growth, mineral weathering, harvesting scenarios, and deposition rates are powerful in assessing the susceptibility of soils to biomass-induced acidification. Dynamic soil chemistry models such as MAGIC (Cosby et al., 1985, 2001) and ForSAFE (Wallman et al., 2005) have been used in the past, where both models were applied to Swedish forest stands. Due to historic data collection and well-documented forestry practices, Swedish forests provide an excellent setting to develop and validate such models. For example, Belyazid et al. (2006) used ForSAFE to simulate changes in soil chemistry relative to atmospheric deposition at 16 different forest sites across Sweden, and showed that enhanced tree growth due to elevated nitrogen deposition could delay or even reverse the recovery of soils from acidification caused by the historical acid deposition. In another study, Zetterberg et al. (2014) used MAGIC to simulate changes in soil Ca^{2+} pools and stream acid neutralizing capacity at multiple harvest scenarios for three different

Swedish forest stands. In a complementing study, based on data from three Swedish experimental sites with stem-only and whole-tree harvest treatments, it was found that MAGIC exaggerated the Ca^{2+} loss due to harvesting between 1990 and 2013 (Zetterberg et al., 2016).

5 The objectives of this paper are to (i) investigate possible long-term impacts of two theoretical future harvesting scenarios on the acidification and base cation status using a novel dynamic model, HD-MINTEQ, and (ii) compare biomass-induced acidification to the historical acidification that took place during the 20th century due to acid rain. Specifically, we describe the soil chemical dynamics of three different Swedish forest stands; Aneboda, Gårdsjön, and Kindla, using HD-MINTEQ (Löfgren et al., 2017) for the period 1880-2080.

10

An advantage of using the HD-MINTEQ model over e.g. ForSAFE and MAGIC is that the former is based on state-of-the-art descriptions of aluminium (Al) and base cation (BC) chemistry, which are probably more accurate (Gustafsson et al., 2018). The version used in this paper incorporates the BC release kinetics from the PROFILE weathering model (Sverdrup and Warfvinge, 1993).

15

In the following, we first use historical data to model the soil chemistry dynamics from 1880 through 2080 assuming that there are no harvesting events in the future. Modeled results are compared to measured soil water data for the period 1993 to 2010. Next we modeled the effects of two different harvesting intensities at 2020: conventional harvest (CH), which removes stems only, and a whole-tree harvest (WTH), which in addition to stems also removes tops and branches. The parameters in focus are soil solution pH, soil solution BC concentration, Ca^{2+} sorption, and weathering rates.

20

2. Methods

2.1 HD-MINTEQ

Simulations were run using the Husby Dynamic MINTEQ model (HD-MINTEQ), which connects the equilibrium calculations of Visual MINTEQ version 3.1 (Gustafsson, 2018), the Simple Mass Balance model (Sverdrup and De Vries, 1994), and the PROFILE model for soil chemical weathering (Sverdrup and Warfvinge, 1993). The details of HD-MINTEQ have previously been described by Löfgren et al. (2017) and in a companion paper (Gustafsson et al., 2018). In brief, it relies on the Stockholm Humic Model (SHM) for organic complexation (Gustafsson, 2001; Gustafsson and Kleja, 2005). The model assumes that the equilibria for ferrihydrite and $\text{Al}(\text{OH})_3$ provide the upper limit for the solubility of Fe^{3+} and Al^{3+} in mineral soil horizons. Further, it uses an extended Freundlich model to simulate SO_4 adsorption (Gustafsson et al., 2015). HD-MINTEQ does not simulate N chemistry; instead dissolved NH_4^+ and NO_3^- in the different horizons are given as input data, and are held constant (Table 1). The soil pools of organic C and geochemically active Al were assumed to be constant over the simulated time period. To deal with water transport, HD-MINTEQ uses a 1-D advective-dispersive equation, although the actual dispersion is often

30

governed by the thickness of the modelled soil layers. Vertical flow is assumed, which should be a reasonable approximation for the studied soils, as they were located in recharge areas where the soil surface was nearly flat. The plant uptake is distributed over the two or three uppermost layers, as in the SAFE model of Warfvinge et al. (1993).

2.2 Model setup

5 In the current application of the HD-MINTEQ model, the soils were compartmentalized into four different discrete horizons: an organic horizon (O), an eluvial layer (E), and two illuvial subsoil horizons (B1 and B2). Simulations were run over a 200-year period from 1880 to 2080, with a 1-week time step. Three different forest stands were simulated; Aneboda (N 57° 05' E 12° 32'), Gårdsjön (N° 58 40' E° 12 30'), and Kindla (N 59° 05' E 12° 01') (Fig. S1), under three different harvest scenarios:

- 10 (1) conventional harvest (CH, stems-only removal),
(2) whole-tree harvest (WTH, 100% removal of above-ground logging residues), and
(3) no-harvest control (NH).

At all three sites, the harvest events occurred in the year 2020.

15

The input data for each site and soil horizon are presented in Table 1 and were based on climate and soil profile (Podzol) data collected in earlier work. For the most part, these are given in Löfgren et al. (2011). The bulk densities were estimated as a function of organic C and soil depth using the empirical relationships of Nilsson and Lundin (2006). The volumetric water content was set to a common value of $0.3 \text{ m}^3 \text{ m}^{-3}$. Sensitivity analyses revealed that the model outcome was not greatly affected by the value of this parameter (data not shown). The extent of sulphate adsorption in the B1 horizon of Kindla was assumed to be strongly sorbing (“strong” in Table 1), similar to that of another Podzol in the same area of Sweden (Gustafsson et al., 2015). The other two soils from south-western Sweden were assumed to have less (Table 1) sulphate adsorption in agreement with other soils from this area (Karlton, 1995); the relevant Freundlich parameters were taken from the Tärsjö soil of Gustafsson et al. (2015). The mineral soil horizons were assumed to be in equilibrium with ferrihydrite, whereas Fe(III) was assumed to be negligible in the O horizons. Dissolved organic C (DOC) was assumed to be constant throughout the simulation period, and the values were calculated from the mean DOC concentrations in soil solution (lysimeter data) between 1993 and 2014.

25

2.3 Deposition

Historical wet deposition data for the three sites (Fig. S2) were taken from Löfgren et al. (2011) and from Zetterberg et al. (2014). To calculate the contribution from dry deposition, results from measurements of a surrogate surface were used (Ferm and Hultberg, 1995; 1999). Reductions of the total deposition as a result of harvesting were considered using functions of Zetterberg et al. (2014). CH and WTH scenarios used the same deposition profiles, represented by the dotted-lines in Fig. S2.

30

In the NH scenario, deposition values were maintained at 2019 levels from 2020 through 2080. The relatively high levels of Na and Cl deposition at Gårdsjön were due to its proximity to the sea. The dips in deposition at Gårdsjön in the early 1900s and Kindla around 1890 were due to historical harvesting events. The dips that occur in 2020 were due to the simulated harvest scenarios. Following the rise and fall of SO₄ and NO₃ throughout the 20th century (grey shaded and labeled *Historical acidification*) at all three sites, the influence of industrial emissions and subsequent regulations can be clearly seen. Currently, the SO₄ and NO₃ depositions are similar to the levels observed in the 1930s.

2.4 Plant uptake

BC uptake trends at Kindla and Aneboda (Fig. S3) were calculated as described previously (Zetterberg et al., 2014). Briefly, biomass at any given time point was used to allocate the cation amount over time according to classical growth curves and information regarding any natural event (e.g., storms and fire) or silvicultural measures (e.g., clear-cutting and thinning) that have taken place during the rotation period. The final uptake curves were created by multiplying the biomass increments by the nutrient concentrations for various tree parts. BC uptake rates are based on current biomass (hindcast scenario) and future biomass predictions by the Swedish forest growth model ProdMod, version 2.2 (Ekö, 1985). BC uptake values were finally corrected for litterfall (which returns BC to the soil) and remineralization estimates. The net BC uptake at Gårdsjön was estimated using the ForSAFE model, by dynamically simulating photosynthesis, growth and gross uptake in response to environmental drivers, and subtracting litterfall that was physiologically simulated in response to light saturation, respiration and water availability (Belyazid and Moldan, 2009).

The highest rates of net uptake occur in young growing forests, and as the forest stands age, less BC are taken up. The stack of graphs in the left column of Fig. S3 represents the NH scenario, which means that for Aneboda and Kindla, uptake trends after 2019 were modeled using an exponential decay and essentially approach zero as time goes on. The stack of graphs in the central and right columns (Fig. S3) represent the uptake trends that were used from 2020 and onwards under the CH and WTH scenarios, respectively. The negative values in uptake that occur after harvesting events are due to net influx of BC originating from mineralization of leftover debris. The CH scenarios produce more negative values than WTH scenarios because there is more debris left on the soil. It should also be noted that the assumed 100% removal of harvest residuals in the WTH scenario is an overestimation; in practice, ~70% is removed (Nilsson et al., 2015).

2.5 Mineralogy and weathering

For Aneboda and Kindla, the mineralogy used in the PROFILE submodel was calculated from data on total elemental analysis using the A2M model (Posch and Kurz, 2007). For Gårdsjön, the mineralogy was taken directly from Martinson et al., (2003). The specific surface area used by PROFILE was estimated from the particle-size distribution using the relationship of Sverdrup (1996). The mineralogy data are presented in Table 1. To calculate weathering rates, the relationships of Sverdrup and Warfvinge (1993) were used. The only modification in the current work was the way in which the organic anion concentrations

$[R^-]$ (mol L⁻¹) were calculated, as HD-MINTEQ uses the SHM whereas the original PROFILE model used the Oliver equation. Thus, the main equation to calculate the weathering rate is:

$$r = k_{H^+} \cdot \frac{\{H^+\}^{n_H}}{f_H} + \frac{k_{H_2O}}{f_{H_2O}} + k_{CO_2} \cdot P_{CO_2}^{n_{CO_2}} + k_R \cdot \frac{[R^-]^{n_R}}{f_R} \quad (1)$$

5

where r = weathering rate (keq m⁻² s⁻¹) for an individual mineral, k_{H^+} , k_{H_2O} and k_R = rate coefficients for the reaction with H⁺, H₂O and DOC, respectively (m s⁻¹), n_H , n_{CO_2} , and n_R = reaction orders of individual reactions, P_{CO_2} = partial CO₂ pressure (atm), and f_H , f_{H_2O} , and f_R = retardation factors (“brakes”). The latter are defined as:

$$10 \quad f_H = \left(1 + \frac{[Al^{3+}]}{k_{Al}}\right)^{x_{Al}} \cdot \left(1 + \frac{2[Ca^{2+}] + 2[Mg^{2+}] + [K^+] + [Na^+] }{k_{BC}}\right)^{x_{BC}} \quad (2)$$

$$f_{H_2O} = \left(1 + \frac{[Al^{3+}]}{k_{Al}}\right)^{z_{Al}} \cdot \left(1 + \frac{2[Ca^{2+}] + 2[Mg^{2+}] + [K^+] + [Na^+] }{k_{BC}}\right)^{z_{BC}} \quad (3)$$

$$f_R = 1 + \left(\frac{[R^-]}{k_R}\right)^{0.5} \quad (4)$$

15

where k_{Al} , k_{BC} , and k_R are saturation coefficients for dissolution reductions, whereas x_{Al} , x_{BC} , z_{Al} , and z_{BC} are reaction orders. Values of all coefficients and reaction orders were taken from Sverdrup and Warfvinge (1993).

2.6 Calibration

To initialize the model, the following data for the first time step (in 1880) were provided: dissolved concentrations of major cations, anions and DOC, and for the solid phase geochemically active Al (Table 1). Based on this input, HD-MINTEQ then calculated the start pH and the corresponding sorbed concentrations of major ions as well as dissolved Al.

The model was calibrated in an iterative process in which geochemically active Al and the plant uptake percentages of the different layers were adjusted. Further it was assumed that the soil water chemistry was in steady-state with respect to the

environmental conditions in 1880, i.e. with respect to the assumed values for atmospheric deposition, plant uptake, weathering, etc. Before calibration, an initial guess was made of geochemically active Al and of the base cation uptake percentages. During each iteration, the first step was to run the model for 1,000 years with the 1880 parameters to obtain initial (start-state) values of dissolved ions. Final values produced after a 1,000-year simulation were then used to initiate the model, which was re-run
5 with historical disturbances and changes in atmospheric deposition. The modelled values of pH, dissolved inorganic Al and other BC concentrations from 1993 to 2014 were then compared to soil solution data from the same period taken from various depths and binned into either horizon E or B before being plotted (Löfgren et al., 2011). Further, it was checked that the assumed BC uptake percentages did not result in uneven depletion rates in the different layers; if so, the percentages were adjusted. Based on the above, refined guesses of geochemically active Al and of the plant uptake distribution could be made
10 for the next iteration.

During the initial model runs, it was found that the modeled drop in pH after 2020 at Aneboda and Kindla was limited by the amount of sorbed Ca^{2+} , restricting Ca^{2+} available for vegetation uptake. In the harvesting scenarios the sorbed Ca^{2+} pool was not replenished in spite of the increased pH after historic acidification, which is similar to what was observed in the MAGIC
15 simulations of Zetterberg et al. (2014). This in turn led to extremely low levels of dissolved Ca^{2+} and to occasional model errors due to negative concentrations in preliminary model runs. To avoid this from happening, the net Ca^{2+} uptake was decreased as dissolved Ca^{2+} became low, according to the following relationships taken from the “old” SAFE model (Alveteg, unpublished):

$$20 \quad \text{Ca}_{\text{upt,real}} = f_{\text{upt}} \cdot \text{Ca}_{\text{upt,init}} \quad (5)$$

where $\text{Ca}_{\text{upt,real}}$ is the adjusted net Ca uptake, $\text{Ca}_{\text{upt,init}}$ is the assumed Ca uptake according to Table 1, and f_{upt} is defined by:

$$f_{\text{upt}} = \frac{[\text{Ca}^{2+}]^n}{[\text{Ca}^{2+}]^n + c^n} \quad (6)$$

25 where $n = 4$ and $c = 1.5 \cdot 10^{-6}$. These equations prevented dissolved Ca^{2+} concentrations from falling below $5 \mu\text{mol L}^{-1}$, but it also limited the acidification effect due to Ca uptake. To what extent trees will adjust their BC uptake in response to lower availability in the soil is still debated (Zetterberg et al., 2014). In plot experiments in which the effects of harvesting were studied, the depletion of sorbed Ca^{2+} was less severe than that predicted by mass-balance calculations and models (Zetterberg
30 et al., 2014). Possible reasons include both a lower Ca^{2+} uptake to trees and mineralisation of strongly bound Ca^{2+} in litter, which is otherwise not geochemically active. However, because the HD-MINTEQ simulations here produced stronger effects

on soil Ca compared to those observed in the field (Zetterberg et al., 2016), it seems probable that the acidification effect as predicted by HD-MINTEQ may be regarded as a “worst-case scenario”, and that the real acidification, at least over the first rotation period, may be even smaller. However, at this point it needs to be added that these conclusions may not be relevant in cases when nitrification following harvest is substantial, in which case the acidification effect could be considerably larger; this possibility was not considered in our simulations. Most Swedish forests are N-limited (Högberg et al., 2017), but increased nitrate concentrations are found in soil solution for some years after final felling. Nitrification is dependent on site productivity, which is between 4 and 8 m³ ha⁻¹ yr⁻¹ in the sites studied. According to the estimates of Futter et al. (2010), the total accumulated harvest effect should generally not exceed 220 and 500 meq NO₃⁻ m⁻² for site productivities of 4 and 8 m³ ha⁻¹ yr⁻¹, respectively (Futter et al., 2010), indicating rather modest nitrification effects on the long-term acid-base status of the soils. As an example, this value represents between 5 and 15 % of the atmospherically deposited BC over a full rotation period, hence nitrification is a relatively minor proton source as compared to other processes in the forest soils under study.

3. Results and discussion

3.1 Historic acidification

Historic acidification of forest soils from atmospheric deposition of S took place from 1940 through 2000, and can be seen in the modelled soil solution pH profiles at Aneboda (Fig. 1a), Gårdsjön (Fig. 2a), and Kindla (Fig. 3a). At Aneboda, the lowest soil solution pH for each horizon profiles occurred around 1990, about the same time that atmospheric S deposition began to decline (Fig. S2). The most dramatic decrease in pH at Aneboda occurred within the B1 horizon, dropping from pH 5.29 in 1940 to pH 4.81 in the late 80s, a total pH decline of 0.48 units in 47 years. The other horizons (O, E, and B2) at Aneboda saw milder changes in pH (<0.20 units) over the same time period. The effects of historical acid rain can also be seen in the BC profiles of Ca²⁺ and Mg²⁺, most significantly in the B1 and B2 horizons of Aneboda. An increase in dissolved BC occurred in order to balance the charge created by increasing levels of anions (SO₄²⁻ and NO₃⁻) being deposited from the atmosphere, i.e., these BC were exchangeable and responsive to anion concentrations. Between 1940 and 1980, dissolved Ca²⁺ concentrations increased by 275% and 94% in the B1 and B2 horizon, respectively. The anomalous blip in pH (and BC) at Aneboda occurring between 2008 and 2018 is the result of a large storm that downed many trees in 2005, followed by a bark beetle infestation, resulting in mineralization, acidification and increased dissolved Ca²⁺ (Löfgren et al., 2014).

Of the three sites studied, the strongest effect of historic acid rain was seen at Gårdsjön (Fig. 2a), which experienced an average decline of 0.39 pH units across all four horizons. This is likely due to the higher S (as sulphuric acid) deposition at Gårdsjön (Fig. S2). The horizon subject to the most drastic acidification was the E horizon, which experienced a sharp decline from pH 4.81 in 1940 to pH 4.02 by 1985 (a drop of 0.70 pH units in 45 years). Similar to Aneboda, Gårdsjön experienced its most

acidic soil conditions in the mid 1980s. However, the B1 horizon did see a slight delay, experiencing its most acidic conditions in the early 1990s. This trend in delayed acidification across horizons was even more pronounced at Kindla (Fig. 3a), where the O and E horizons reached their most acidic conditions by 1980, the B1 horizon continued to acidify until 1994, the B2 horizon did not reach its most acidic conditions until 2013 (nearly 25 years after the S and N deposition began to decline, Fig. 5 S2). The delayed response was mainly attributed to SO_4 adsorption/desorption, which is known to delay response times to decades for strongly SO_4 -adsorbing soil systems (Cosby et al., 1986).

The dissolved aluminium profiles at all three sites show that most of the mobilization of dissolved Al occurred in the E horizon. This was likely due to the higher pH of the B horizons ($\text{pH} > 5$), where the precipitation of aluminium hydroxide and/or allophane removed soluble Al (Gustafsson et al., 1995; Karlton et al., 2000). This inverse relationship with pH is demonstrated clearly for Kindla's B1 horizon, where soluble Al concentration peaked as pH decreased below 5 (Fig. 5). The low levels of soluble Al in the O horizon is attributed to complexation with organic ligands.

For the Gårdsjön and Kindla sites, the modelled results align well with the lysimeter data, with a few exceptions. Interestingly, the model underestimated Mg^{2+} concentrations at both sites. This could be caused by the use of A2M estimates, i.e., that the normalization model underestimated the presence of easily weathered Mg-containing minerals. In a recent study, Casetou-Gustafson et al. (2018) compared A2M with the mineralogy obtained by X-ray powder diffraction (XRPD) for two soils that were similar to the soils studied here. They found that trioctahedral mica and hydrobiotite were consistently underestimated by A2M, which is consistent with our modelling results as these Mg-containing minerals have relatively high weathering rates. Moreover at Kindla, SO_4^{2-} concentrations were underestimated. There may be several explanations, but one possibility is mineralization and oxidation of organically bound S (Löfgren et al., 2001, 2014). The delay in SO_4^{2-} decrease at Kindla was, however, predicted well in the B1 horizon of the model.

For the Aneboda site, the discrepancies between model and observations were more substantial. For example, while SO_4^{2-} and pH were grossly underestimated, Ca^{2+} and Mg^{2+} were overestimated. It is important to note that the lysimeter data plotted in Figs. 1, 2 and 3 are averages based on data from several lysimeters, and it has previously been observed that there are large variations in the results of individual lysimeters at the Aneboda site (Löfgren et al., 2010, 2011, 2014). As an example, for the B horizon the averaged results are based on 8 lysimeters. Three of these, nos. 7102, 7104 and 7105, had results that were clearly divergent from the others (Fig. S4). Dissolved SO_4^{2-} , Ca^{2+} and Mg^{2+} were all considerably higher, whereas the pH was lower. Possible reasons include a net mineralization and oxidation of organically bound sulphur in response to decreased S deposition (Löfgren et al., 2001, 2014), a process which was not taken into account in the model. It may also be observed that if the results from the three lysimeters were removed, there would be a clearly improved agreement between the model and the observations.

3.2 Harvesting-induced acidification

One trend across all horizons at all sites was that directly after a simulated harvesting event (CH or WTH) in 2020, the pH sharply increased for 5-10 years before slowly declining over the remainder of the simulation (displayed in Figs. 3b, 4b, and 5b). The increase in pH immediately following a harvest event is primarily caused by mineralization of BC-containing harvest residues (Fig. S3), but also marginally by a decreased dry S deposition. These processes increase the sorption of BC on the exchange sites (Figs. 11, 21 and 31). The impact of harvesting on pH and sorbed Ca lasted for three to four decades at all three sites, eventually converging towards the NH scenario, before falling below it, which was demonstrated previously in long-term experiments (Zetterberg et al., 2016). However, once new stands have been established and trees begin to grow, uptake drives a net loss of BC from the soil, leading to acidification. Across all three sites, the B1 horizons became the most acidified by 2080 compared to the NH scenario. The O horizon experienced the least change after harvesting events, and at Aneboda and Kindla, the pH was slightly more *basic* compared to the NH scenario by 2080. However, had the simulation been run for a longer time, it appears that the pH would eventually reach NH levels, or drop below them. In reality a second harvest would likely have occurred after some 80-100 years, yielding a new period with a brief pH increase.

Comparing the two harvesting scenarios demonstrates that over the 60 year time-frame studied, simulated WTH acidified the soil more than CH, but not by much even though 100% of the harvest residues are assumed withdrawn at WTH. At Aneboda, the pH across all horizons dropped by an average 0.13 (WTH) and 0.12 units (CH) compared to the NH scenario by the year 2080. The difference between WTH and CH was more pronounced at Kindla, which saw a mean pH decrease across all horizons of 0.10 (WTH) and 0.04 (CH) units compared to the NH scenario by 2080. The most sensitive horizon to harvesting at Aneboda was the B1 horizon, which dropped in pH by 0.42 (WTH) and 0.36 (CH) units compared to the NH scenario by the year 2080. Aneboda's B1 horizon also experienced a significant loss of soluble Ca^{2+} after harvesting, decreasing by 65% (WTH) and 56% (CH) by 2080 compared to the NH control. However, on a percentage basis, Aneboda's E horizon experienced the most precipitous loss of soluble Ca^{2+} after harvesting, decreasing by 87% (WTH) and 86% (CH) by 2080 compared to the NH control. Similar trends were seen in sorbed Ca^{2+} concentrations at Aneboda by 2080. The E horizon experienced a 92% (WTH) and 91% (CH) decrease compared to the NH control, while the same figures for the B1 horizon were 83% and 75%, respectively. Neither harvesting scenario appeared to have a tangible impact on the Ca^{2+} concentrations (soluble or sorbed) in the B2 horizon at Aneboda. Contrary to the trends in Ca^{2+} concentrations in horizons E, B1, and B2, after harvesting, the O horizon experienced an increase in soluble and sorbed Ca^{2+} by 2080 compared to the NH control.

Compared with the NH scenario, Kindla also experienced a phase with an increased pH followed by acidification in the end of the simulation period, but to a lesser degree than Aneboda. At Kindla, the mean soil pH at 2080 decreased by an average of 0.04 and 0.10 units after CH and WTH, respectively. The B1 horizon was the most sensitive to acidification in both harvesting scenarios. Of the Kindla horizons, B1 also saw the greatest change in soluble and sorbed Ca^{2+} after harvesting. Soluble Ca^{2+}

decreased by 80% (WTH) and 73% (CH), while sorbed Ca^{2+} decreased 91% (WTH) and 84% (CH) by 2080 compared to the NH scenario. One interesting observation at Kindla was that the delayed acidification with increasing soil depth, which was related to SO_4^{2-} adsorption/desorption processes and historic acidification, was not observed after harvesting. Our simulations indicate that biological acidification did not initiate such processes, at least within 60 years after harvest, corresponding to an almost full rotation period.

A pH increase after harvesting was also observed at Gårdsjön, with the O and E horizons experiencing the strongest response. After increasing for a couple of years after harvest, the pH started to decline, slowly approaching the NH trend line. By the end of the simulation (2080), there was almost no difference between CH, WTH, and the NH scenarios, and contrary to the trends at Aneboda and Kindla, it did not appear that the soils were trending towards further acidification post-2080. This trend of disturbance immediately following a harvest before slowly approaching the NH trends can also be seen in BC concentrations. Total dissolved Al, Ca, and Mg sharply decreased immediately after CH and WTH for several years before meandering towards the NH trend line. However, by 2080, the concentration of soluble BC after WTH was significantly lower than after CH, and both harvesting events resulted in less soluble BC compared to the NH scenario. Exchangeable Ca^{2+} concentrations following harvesting events at Gårdsjön appeared to oscillate around the NH trendline: increasing immediately after harvest (similar to Aneboda and Kindla), before slowly decreasing (also similar to Aneboda and Kindla), but then again increasing to approach the NH levels of sorbed Ca^{2+} . There are several possible explanations for the Ca^{2+} profiles at Gårdsjön. First, Gårdsjön has a relatively high organic carbon content (Table 1), which governs the cation exchange capacity, resulting in higher exchangeable Ca^{2+} to buffer the soil porewater. Also, atmospheric deposition at Gårdsjön is significantly higher than at the other locations (Fig. S2) resulting in a higher ionic strength porewater, which would result in quicker transport of soluble ions between the horizons.

The absolute magnitude of the model-predicted changes is of course uncertain, not least in the light of the mixed success of the model to predict the available lysimeter data, as discussed in the previous section. Nevertheless, the simulated results strongly suggest that the acidification due to a harvesting event at 2020 would be less impactful, over the time range studied, than that of historic atmospheric acidification. Even though the pH in the WTH and CH scenario decreased with time as compared to the NH scenario, the simulated pH did not drop to the levels observed around the peak of historic acidification (1980-1990). As was discussed by Löfgren et al., (2017), this reflects the different acidification mechanisms involved. Most importantly, the concentration of mobile anions was much lower in the harvesting scenarios compared to the levels around the 1980s and 1990s, and this limits the potential pH decrease.

3.3 Weathering and release of base cations

The weathering rates as calculated by the PROFILE submodel in HD-MINTEQ differed across locations and layers in response to historic acidification and the presence of weathering brakes such as Ca^{2+} and Al^{3+} (Eqs. 2 and 3). Across all sites and layers, the major BC released by weathering were Ca^{2+} and Na^+ (Fig. 4). During the historic acidification period, the annual weathering rates at several sites and horizons (Aneboda: E; Gårdsjön: E, B1, and B2; Kindla: B1 and B2) actually decreased (Fig. S5), although not by much. This is due to the brakes in the weathering function (i.e. from Al^{3+} and BC, Eqs. 2 and 3) and to the fact that total dissolved Al and BC were much higher during this period (Figs. 1, 2 and 3). In other words, the increased weathering rate expected from a decreased pH was offset by the increase in dissolved Al and BC, resulting in a very small net effect, which according to PROFILE was negative. However, the exact patterns varied from site to site, and from layer to layer. The low weathering rates in the E horizon at Gårdsjön were likely due to its mineralogy, i.e., minerals other than quartz, K-feldspar, and plagioclase were essentially absent from the E horizon, but they were present further down in the profile. Another factor leading to low weathering rates in the Gårdsjön E horizon was the relatively thin layer thickness.

Contrary to the decrease in weathering rates during the historic acidification of the 1970s, the simulated weathering rates after the harvesting scenarios at 2020 generally increased compared to NH by 2080 (Fig. 5) although again, the net change was very small. However, the dynamics were quite different across each layer and site. The B1 horizon at Aneboda saw the strongest increase in weathering rates after harvesting, increasing by 9% (CH) and 11% (WTH) by 2080 compared to the NH scenario. The other horizons at Aneboda (E and B2) had almost unchanged weathering rates (<2% increase by 2080 compared to a NH scenario). It is worth noting that the difference between harvesting events and NH at the Aneboda B1 and B2 horizons would likely continue to diverge beyond 2080. At Aneboda, by the year 2080, the sum of weathered BC for the CH and WTH scenarios were 32 (CH) and 46 (WTH) meq m^{-2} higher, respectively, than the BC weathered in the NH scenario (Fig. S6). To put this into perspective, this difference is equivalent to only 1.1 % and 1.7 %, respectively, of the atmospherically deposited BC in the WTH plots over the same period. Such a small change in the weathering rate cannot be experimentally verified, and is unlikely to be of any ecological significance.

The trends in simulated weathering rates at Gårdsjön after harvesting mimicked the trends seen in pH, i.e., they rapidly increased for a couple of years, before declining to approach similar levels to the NH scenario. For all three layers at Gårdsjön, the modeled weathering rates appeared to reach steady-state conditions by the year 2055, whereas the weathering rates at Kindla and Aneboda deviated from the NH trendlines well into 2080. On a mass basis, CH and WTH at Gårdsjön resulted in amounts of weathered BC that were 74 and 49 meq m^{-2} higher than in the NH scenario by the year 2080 (Fig. S6). This change is equivalent to 0.6 and 0.4 %, respectively, of the sum of atmospherically deposited BC in the WTH plots.

At Kindla, no horizon saw an increase in simulated weathering rate greater than 3.4% by 2080, compared to the NH scenario. In fact, when weathering of the three mineral soil layers was summed, weathering rates slightly decreased by 0.9% (CH) and 2.0% (WTH) by 2080 compared to the NH scenario, which was equivalent to a decreased amount of weathered BC of 64 and 26 meq m⁻², respectively, over the simulated time period (Fig. S6). This result was influenced mainly by the large decrease in weathering rates in the E horizon in response to the pH increase after harvest (Fig. 3f), and the change is equivalent to 2.0 and 0.8 % of the atmospherically deposited BC.

Weathering is dictated by both H⁺ (the lower the pH, the more weathering) and by the weathering brakes in the model, most importantly dissolved Al³⁺ (the more Al³⁺, the less weathering). Some layers followed the generally expected trend of increased weathering rates with lower pH (B1 and B2 of Aneboda, and E of Kindla). These same layers were also low in dissolved Al³⁺ (Fig. S7), so the Al³⁺ weathering brake (the first terms of Eq. 2 and Eq. 3) was not strong, and as a result the H⁺ concentration dictated mineral weathering. In all other layers (E of Aneboda, all horizons in Gårdsjön, and both B horizons of Kindla) the simulated weathering rates *decreased* with lower pH, which was due to a relatively high concentration of dissolved Al³⁺ that caused the Al³⁺ weathering brake to be important. There is a certain threshold range in the model where the weathering brake due to Al³⁺ concentration started to influence weathering rates greatly, rendering H⁺ concentration less important. The “weathering rate vs. Al” profiles in Fig. S7 show the transition from pH-controlled weathering to Al-controlled weathering — weathering rates increase with increasing Al concentrations until a “break point” Al concentration is reached, where weathering rates begin to level off and decline. There are other weathering brakes as well, such as Ca²⁺ that limit the effect of pH-induced weathering (Eq. 2), but these were less important. Although not obvious at first, the trends in simulated weathering rates within an individual layer were consistent, regardless of the source of acidification (be it acid rain or harvesting).

As mentioned previously, limitations in the model prevented us from addressing possible nitrification effects resulting from long-term N deposition, which may influence these results. A future task is to upgrade the HD-MINTEQ model to include N transformations, so that the effects arising from e.g. N deposition and nitrification can be more accurately assessed. Further, improved estimates of the mineralogical composition through e.g. X-ray diffraction would be desirable to avoid the mismatch in individual base cations, as was observed for Mg²⁺.

Although the model was parameterized for three Swedish forest sites, the main trends are likely to be valid also for forest soils in other parts of the world, i.e. that forest management practices are not likely to result in strong acidification effects within one full rotation period. However, these results should not be extrapolated to longer time perspectives, as certain drivers of the model may be increasingly uncertain with time. For example, it is not known to what extent the base cation uptake behavior will differ between NH, CH and WTH scenarios over a period of several rotations.

4. Conclusions

The HD-MINTEQ simulations for three sites indicate that forest harvesting contributes to long-term soil acidification, with marginally larger effects for whole-tree harvesting compared with stem-only harvesting scenarios. However, acidification due to harvesting events had much less impact on soil pH compared to historical acid rain, provided that harvesting did not cause substantial nitrification. The strongest effect of historic acid rain was seen at Gårdsjön, the site that experienced the most sulphuric acid deposition. Furthermore, our model results suggest that the BC weathering rates remained largely unchanged during the historic acidification era, as a result of the opposing effects of decreased pH and increased levels of dissolved Al^{3+} .

Although the predicted long-term pH effect of harvesting is predicted to be small in relation to historical acidification, future harvesting simulations did significantly change the soil chemistry compared to a no-harvest scenario. Directly after a harvest, modeled soil solution pH increased and remained above the NH baseline for several decades before eventually dropping below the baseline. Mineralization of harvest residues, which release base cations, and a decreased dry sulphur deposition, were likely responsible for the alkalization immediately following a harvesting event. As in the case of historical acidification, the BC weathering rates were little affected by harvesting. Over a period of 60 years after simulated harvest events, there were very small increases in the BC weathering rates as compared to the no-harvest simulation for the Aneboda and Gårdsjön sites, assuming that the PROFILE weathering submodel is correct. Over the same time period, Kindla saw a very small decrease in BC weathering.

Data and code availability. The raw data, the meta-data and data processing codes are stored on data servers and repositories and available upon request to the corresponding authors.

Competing interests. The authors declare that they have no conflict of interest.

Special issue statement. This article is part of the special issue “Quantifying weathering rates for sustainable forestry” (BG/SOIL inter-journal SI). It is not associated with a conference.

The Supplement related to this article is available at

Acknowledgements. This study was funded by the Swedish Research Council Formas (reg. no. 2011-1691) within the strong research environment “Quantifying weathering rates for sustainable forestry (QWARTS)” and by the Swedish Energy Agency (project no. 31708-3). Carin Sjöstedt is acknowledged for help with the uptake scenarios.

References

- Akselsson, C., Westling, O., Sverdrup, H., Holmqvist, J., Thelin, G., Uggla, E. and Malm, G.: Impact of harvest intensity on long-term base cation budgets in Swedish forest soils, *Water, Air Soil Pollut. Focus*, 7, 201–210, doi:10.1007/978-1-4020-5885-1_22, 2007.
- 5 Belyazid, S. and Moldan, F.: Using ForSAFE-Veg to investigate the feasibility and requirements of setting critical loads for N based on vegetation change - pilot study at Gårdsjön. IVL report B1875, Gothenburg, Sweden, 2009.
- Belyazid, S., Westling, O. and Sverdrup, H.: Modelling changes in forest soil chemistry at 16 Swedish coniferous forest sites following deposition reduction, *Environ. Pollut.*, 144, 596–609, doi:10.1016/j.envpol.2006.01.018, 2006.
- Bertills, U., Fölster, J. and Lager, H.: Natural acidification only—report on in-depth evaluation of the environmental quality objective work, Report 5766, Stockholm, Sweden, 2007.
- 10 Casetou-Gustafson, S., Hillier, S., Akselsson, C., Simonsson, M., Stendahl, J. and Olsson, B.A.: Comparison of measured (XRPD) and modeled (A2M) soil mineralogies: a study of some Swedish forest soils in the context of weathering rate predictions. *Geoderma*, 310, 77–88, doi: 10.1016/j.geoderma.2017.09.004, 2018.
- Cosby, B. J., Hornberger, G. M., Galloway, J. N. and Wright, R. E.: Time scales of catchment acidification. A quantitative model for estimating freshwater acidification, *Environ. Sci. Technol.*, 19, 1144–1149, doi:10.1021/es00142a001, 1985.
- 15 Cosby, B. J., Hornberger, G. M., Wright, R. F. and Galloway, J. N.: Modeling the effects of acid deposition: control of long-term sulfate dynamics by soil sulfate adsorption, *Water Resour. Res.*, 22, 1283–1291, doi:10.1111/j.1600-0536.2012.02097.x, 1986.
- Cosby, B. J., Ferrier, R. C., Jenkins, A. and Wright, R. F.: Modelling the effects of acid deposition: refinements, adjustments and inclusion of nitrogen dynamics in the MAGIC model, *Hydrol. Earth Syst. Sci.*, 5, 499–518, doi:10.5194/hess-5-499-2001, 2001.
- 20 Ekö, P. M.: En produktionsmodell för Sverige, baserat på bestånd från Riksskogstaxeringen, Umeå, Sweden, 1985.
- Engardt, M., Simpson, D., Schwikowski, M. and Granat, L.: Deposition of sulphur and nitrogen in Europe 1900–2050. Model calculations and comparison to historical observations, *Tellus B Chem. Phys. Meteorol.*, 69, 1328945, 25 doi:10.1080/16000889.2017.1328945, 2017.
- Ferm, M. and Hultberg, H.: Method to estimate atmospheric deposition of base cations in coniferous throughfall, *Water. Air. Soil Pollut.*, 85, 2229–2234, doi:10.1007/BF01186165, 1995.
- Ferm, M. and Hultberg, H.: Dry deposition and internal circulation of nitrogen, sulphur and base cations to a coniferous forest, *Atmos. Environ.*, 33, 4421–4430, doi:10.1016/S1352-2310(99)00211-3, 1999.

- Futter, M.N., Ring, E., Högbom, L., Entenmann, S., Bishop, K.H.: Consequences of nitrate leaching following stem-only harvesting of Swedish forests are dependent on spatial scale, *Environ. Pollut.*, 158, 3552-3559, doi:10.1016/j.envpol.2010.08.016, 2010.
- Gustafsson, J. P.: Modeling the Acid–Base Properties and Metal Complexation of Humic Substances with the Stockholm Humic Model, *J. Colloid Interface Sci.*, 244, 102–112, doi:10.1006/jcis.2001.7871, 2001.
- Gustafsson, J. P.: Visual MINTEQ, version 3.1. Web: <https://vminteq.lwr.kth.se>, 2018.
- Gustafsson, J. P. and Kleja, D. B.: Modeling salt-dependent proton binding by organic soils with the NICA-Donnan and Stockholm Humic models, *Environ. Sci. Technol.*, 39, 5372–5377, doi:10.1021/es0503332, 2005.
- Gustafsson, J. P., Bhattacharya, P., Bain, D. C., Fraser, A. R. and McHardy, W. J.: Podzolisation mechanisms and the synthesis of imogolite in northern Scandinavia, *Geoderma*, 66, 167–184, doi:10.1016/0016-7061(95)00005-9, 1995.
- Gustafsson, J. P., Akram, M. and Tiberg, C.: Predicting sulphate adsorption/desorption in forest soils: Evaluation of an extended Freundlich equation, *Chemosphere*, 119, 83–89, doi:10.1016/j.chemosphere.2014.05.067, 2015.
- Gustafsson, J.P., Belyazid, S., McGivney, E. and Löfgren, S.: Aluminium and base cation chemistry in dynamic acidification models – need for a reappraisal?, *Soil*, 4, 237-250, doi:10.5194/soil-4-237-2018, 2018.
- Högberg, P., Näsholm, T., Franklin, O., Högberg, M.N.: Tamm Review: On the nature of the nitrogen limitation to plant growth in Fennoscandian boreal forests, *For. Ecol. Manage.* 403, 161-185, doi:10.1016/j.foreco.2017.04.045, 2017.
- Iwald, J., Löfgren, S., Stendahl, J. and Karlton, E.: Acidifying effect of removal of tree stumps and logging residues as compared to atmospheric deposition, *For. Ecol. Manage.*, 290, 49–58, doi:10.1016/j.foreco.2012.06.022, 2013.
- de Jong, J., Akselsson, C., Egnell, G., Löfgren, S. and Olsson, B. A.: Realizing the energy potential of forest biomass in Sweden – How much is environmentally sustainable?, *For. Ecol. Manage.*, 383, 3–16, doi:10.1016/j.foreco.2016.06.028, 2017.
- Karlton, E.: Acidification of forest soils on glacial till in Sweden (Report 4427), Stockholm, Sweden. [online] Available from: <http://agris.fao.org/agris-search/search.do?recordID=JP2003004145>, 1995.
- Karlton, E., Bain, D. C., Gustafsson, J. P., Mannerkoski, H., Murad, E., Wagner, U., Fraser, A. R., McHardy, W. J. and Starr, M.: Surface reactivity of poorly-ordered minerals in podzol B horizons, *Geoderma*, 94, 265–288, doi:10.1016/S0016-7061(98)00141-4, 2000.
- Löfgren, S., Bringmark, L., Aastrup, M., Hultberg, H., Kindbom, K., Kvarnäs, H.: Sulphur Balances and Dynamics in Three Forested Catchments in Sweden, *Water Air Soil Pollut.*, 130, 631-636, doi:10.1023/a:1013840309681, 2001.
- Löfgren, S., Aastrup, M., Bringmark, L., Hultberg, H., Lewin-Pihlblad, L., Lundin, L., Karlsson, G. P. and Thunholm, B.: Recovery of soil water, groundwater, and streamwater from acidification at the swedish integrated monitoring catchments,

- Ambio, 40, 836–856, doi:10.1007/s13280-011-0207-8, 2011.
- Löfgren, S., Grandin, U. and Stendera, S.: Long-term effects on nitrogen and benthic fauna of extreme weather events: Examples from two Swedish headwater streams, *Ambio*, 43, 58–76, doi:10.1007/s13280-014-0562-3, 2014.
- Löfgren, S., Ågren, A., Gustafsson, J. P., Olsson, B. A. and Zetterberg, T.: Impact of whole-tree harvest on soil and stream water acidity in southern Sweden based on HD-MINTEQ simulations and pH-sensitivity, *For. Ecol. Manage.*, 383, 49–60, doi:10.1016/j.foreco.2016.07.018, 2017.
- Martinson, L., Alveteg, M., Mörth, C.-M. and Warfvinge, P.: The effect of changes in natural and anthropogenic deposition on modelling recovery from acidification, *Hydrol. Earth Syst. Sci.*, 7, 766–776, doi:10.5194/hess-7-766-2003, 2003.
- Nilsson, S. I., Miller, H. G. and Miller, J. D.: Forest Growth as a Possible Cause of Soil and Water Acidification: An Examination of the Concepts, *Oikos*, 39, 40–49, doi:10.2307/3544529, 1982.
- Nilsson, T. and Lundin, L.: Uppskattning av volymvikten i svenska skogsjordar från halten organiskt kol och markdjup (in Swedish), Report 91, Department of Forest Soils, Swedish University of Agricultural Sciences, Uppsala, Sweden, 2006.
- Posch, M. and Kurz, D.: A2M-A program to compute all possible mineral modes from geochemical analyses, *Comput. Geosci.*, 33(4), 563–572, doi:10.1016/j.cageo.2006.08.007, 2007.
- Sverdrup, H.: Geochemistry, the key to understanding environmental chemistry, *Sci. Total Environ.*, 183, 67–87, doi:10.1016/0048-9697(95)04978-9, 1996.
- Sverdrup, H. and De Vries, W.: Calculation critical loads for acidity with the Simple Mass Balance method, *Watet, Air, Soil Pollut.*, 72, 143–162, doi:10.1007/BF01257121, 1994.
- Sverdrup, H. and Warfvinge, P.: Calculating field weathering rates using a mechanistic geochemical model PROFILE, *Appl. Geochemistry*, 8, 273–283, doi:10.1016/0883-2927(93)90042-F, 1993.
- Vadeboncoeur, M. A., Hamburg, S. P., Yanai, R. D. and Blum, J. D.: Rates of sustainable forest harvest depend on rotation length and weathering of soil minerals, *For. Ecol. Manage.*, 318, 194–205, doi:10.1016/j.foreco.2014.01.012, 2014.
- van Breemen, N., Driscoll, C. T. and Mulder, J.: Acidic deposition and internal proton sources in acidification of soils and waters, *Nature*, 307, 599–604, doi:10.1038/307599a0, 1984.
- Wallman, P., Svensson, M. G. E., Sverdrup, H. and Belyazid, S.: ForSAFE - An integrated process-oriented forest model for long-term sustainability assessments, *For. Ecol. Manage.*, 207(1–2 SPEC. ISS.), 19–36, doi:10.1016/j.foreco.2004.10.016, 2005.
- Warfvinge, P., Falkengren-Grerup, U., Sverdrup, H. and Andersen, B.: Modelling long-term cation supply in acidified forest stands, *Environ. Pollut.*, 80, 209–221, doi:10.1016/0269-7491(93)90041-L, 1993.

Zetterberg, T., Köhler, S. J. and Löfgren, S.: Sensitivity analyses of MAGIC modelled predictions of future impacts of whole-tree harvest on soil calcium supply and stream acid neutralizing capacity, *Sci. Total Environ.*, 494–495, 187–201, doi:10.1016/j.scitotenv.2014.06.114, 2014.

Zetterberg, T., Olsson, B. A., Löfgren, S., Hyvönen, R. and Brandtberg, P. O.: Long-term soil calcium depletion after
5 conventional and whole-tree harvest, *For. Ecol. Manage.*, 369, 102–115, doi:10.1016/j.foreco.2016.03.027, 2016.

Table 1: Parameter values and assumptions used for the HD-MINTEQ simulations of all three sites.

Site	Aneboda				Gårdsjön				Kindla			
	O	E	Bs1	Bs2	O	E	Bs1	Bs2	O	E	Bs1	Bs2
Horizon												
Thickness (m)	0.1	0.1	0.15	0.15	0.05	0.05	0.2	0.15	0.1	0.1	0.15	0.15
Bulk density (kg m ⁻³)	118	837	980	1122	156	773	749	836	118	1004	980	1237
Volumetric water content (m ³ m ⁻³)	0.3	0.3	0.3	0.3	0.3	0.3	0.3	0.3	0.3	0.3	0.3	0.3
Dispersivity (m)	0.01	0.01	0.01	0.01	0.01	0.01	0.01	0.01	0.01	0.01	0.01	0.01
Discharge (mm)	500	400	350	350	550	500	450	450	600	500	450	450
Winter soil temp (°C)	3	4	6	8	3	4	6	8	3	4	5	6
Summer soil temp (°C)	12	11	9	8	12	11	9	8	10	8	7	6
Dissolved NH ₄ ⁺ (μM)	14	14 ^a	5.5 ^a	5.5 ^a	0.5	2.6	4.2	4.2	0.5	2.9	3.9	3.9
Dissolved NO ₃ ⁻ (μM)	0.5	0.5 ^a	0.3 ^a	0.3 ^a	0.5	0.4	0.4	0.4	0.5	0.3	0.5	0.5
Organic C (%)	40	4	2.5	1.5	40	5	6	5	40	2	2.5	0.8
Sulfate adsorption	no	No	no	some	no	No	some	some	no	no	strong	some
Equilibrium with ferrihydrite	no	Yes	yes	yes	no	Yes	yes	yes	no	yes	yes	yes
Geochemically active Al (mmol kg ⁻¹)	30	40	40	30	40	50	100	121	30	15	60	60
Partial CO ₂ pressure (atm)	0.001	0.003	0.007	0.01	0.001	0.002	0.007	0.01	0.001	0.002	0.007	0.01
DOC (mg L ⁻¹)	50	48.5	7.7	7.7	35	12.6	9.8	9.8	25	13.7	3.7	3.7
Base cation uptake (% of total)	20	50	30	0	50	30	20	0	20	50	30	0
Start of growth period (week of the year)	15	15	15	15	15	15	15	15	20	20	20	20
Duration of growth period (weeks)	30	30	30	30	30	30	30	30	20	20	20	20
Mineral composition												
K-Feldspar 100 (%)	5.76	5.76	7.52	14.11	-	-	-	-	12.20	12.20	10.75	10.74
K-Feldspar (%)	-	-	-	-	-	15.0	18.0	19.0	-	-	-	-
Plagioclase (%)	-	-	-	-	-	14.0	15.0	16.0	-	-	-	-
Anorthite (%)	3.62	3.63	2.24	4.20	-	-	-	-	1.63	1.63	0.64	1.10
Albite (%)	22.41	22.41	25.69	27.49	-	-	-	-	27.81	27.81	21.22	23.08
Hornblende (%)	1.11	1.11	1.01	1.62	-	0.1	1.5	1.5	1.76	1.76	0.33	0.95
Epidote (%)	4.56	4.56	4.07	4.13	-	0.1	0.75	1.0	2.14	2.14	0.61	1.30
Garnet (%)	-	-	-	-	-	0.1	0.1	0.1	-	-	-	-
Biotite (%)	-	-	-	-	-	0.5	0.5	0.5	-	-	-	-
Apatite (%)	0.09	0.09	0.24	0.24	-	0.1	0.2	0.3	0.21	0.21	0.09	0.15
Fe-Chlorite (%)	-	-	-	-	-	0.4	0.4	0.4	-	-	-	-
Chlorite (%)	0.50	0.50	0.40	0.88	-	-	-	-	0.81	0.81	0.19	0.33
Illite1 (%)	2.07	2.07	3.53	1.77	-	-	-	-	1.43	1.43	1.24	4.35
Mg-Vermiculite (%)	-	-	-	-	-	3.0	15.0	5.0	-	-	-	-
Vermiculite 1 (%)	1.21	1.21	2.16	2.78	-	-	-	-	1.64	1.64	0.48	0.84
Vermiculite 2 (%)	0.50	0.50	0.38	0.84	-	-	-	-	0.99	0.99	0.16	0.31
Muscovite (%)	6.92	6.92	10.67	3.65	-	-	-	-	1.56	1.56	1.36	8.06
Rutile (%)	0.56	0.56	0.49	0.49	-	-	-	-	-	-	0.21	0.28
Hematite (%)	2.33	2.33	0.73	0.73	-	-	-	-	0.43	0.43	0.08	2.11
Chlorite1 (%)	0.73	0.73	0.63	1.72	-	-	-	-	1.35	1.35	0.33	0.49
Specific surface area (m ² g ⁻¹)	1.14	1.04	0.95	0.95	-	1.2	1.1	1.98	-	1.29	1.18	1.18

^aThese values were adjusted for calibration to account for elevated N concentrations detected in lysimeter data from 2011 onwards. This was due to storm damage (Gudrun) in the region, which brought down many trees in 2005.

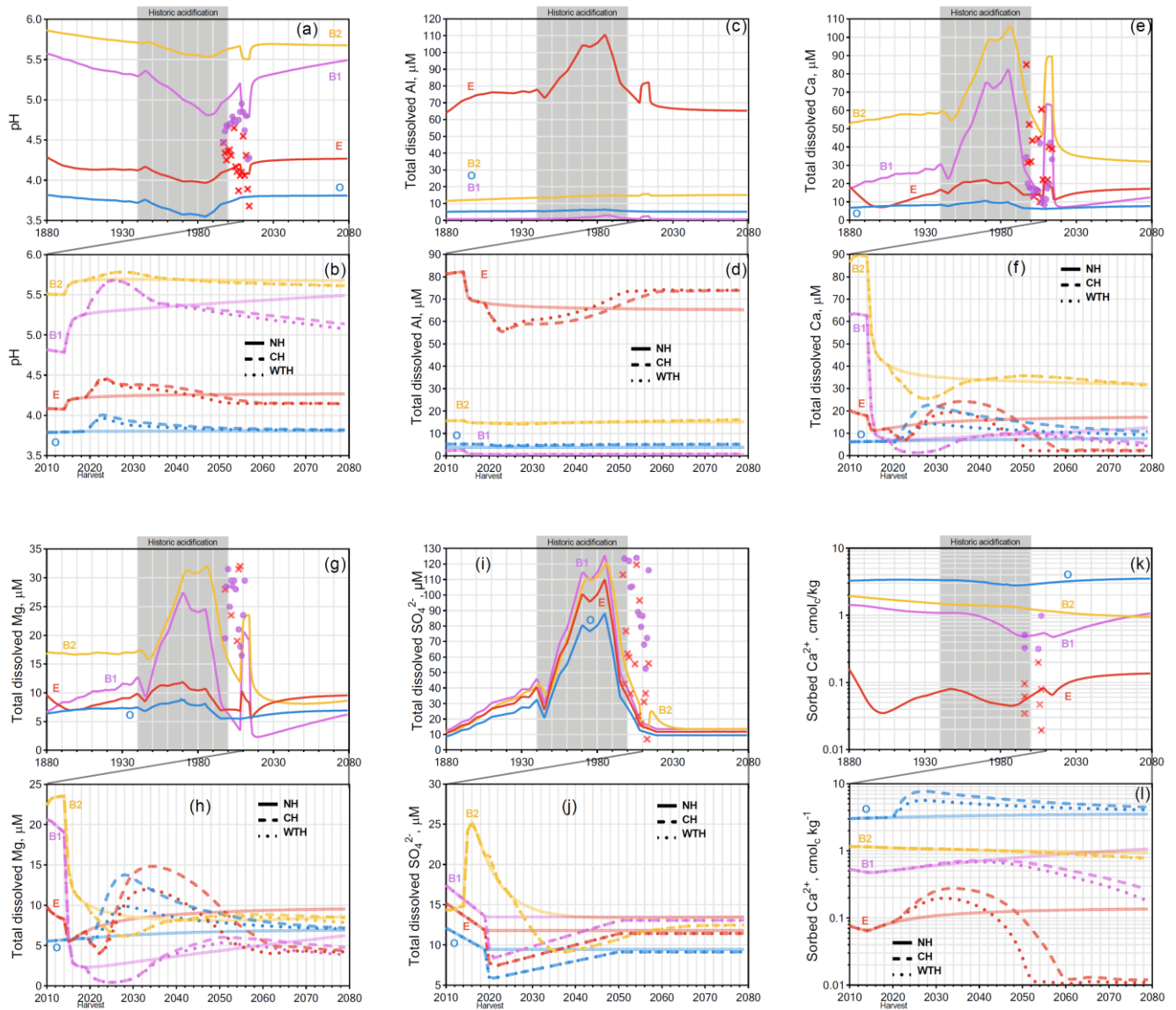


Figure 1: Aneboda. Simulated mean annual pH (a and b), total dissolved Al (c and d), Ca (e and f), Mg (g and h), and SO_4^{2-} (i and j), and sorbed Ca^{2+} (k and l). Chemical dynamics in response to historic acidification (a, c, e, g, i, and k) are presented above the response to harvesting events (b, d, f, h, j, and l). The solid, dashed, and dotted lines represent the annual averages in the NH, CH, and WTH scenarios, respectively. The grey box spanning 1940 to 2000 represents the period of acidification due to S deposition. The symbols “x”, and “●” represent the annual averages of empirical measurements in the E and B horizons, respectively.

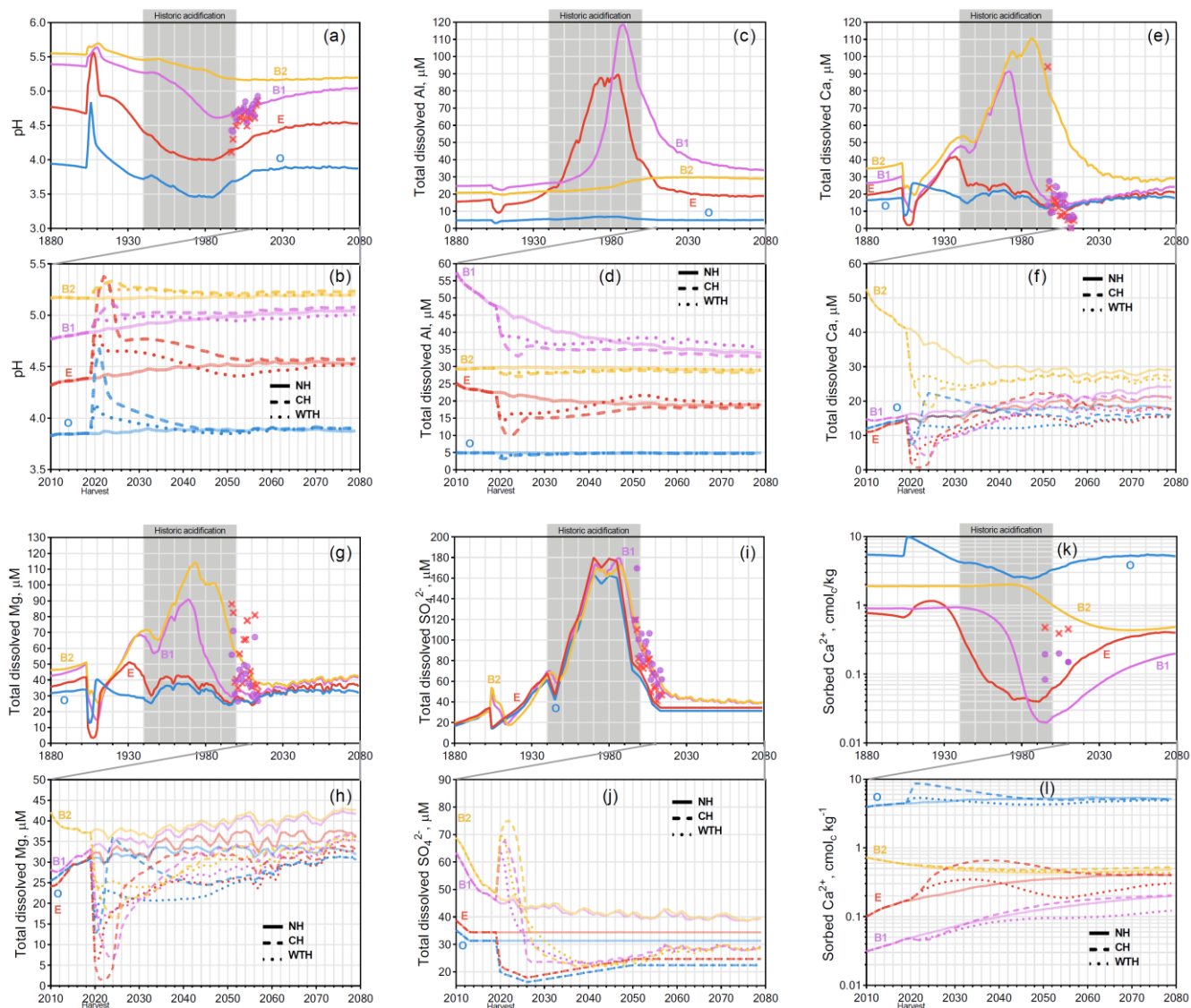


Figure 2: Gårdsjön. Simulated mean annual pH (a and b), total dissolved Al (c and d), Ca (e and f), Mg (g and h), and SO_4^{2-} (i and j), and sorbed Ca^{2+} (k and l). Chemical dynamics in response to historic acidification (a, c, e, g, i, and k) are presented above the response to harvesting events (b, d, f, h, j, and l). The solid, dashed, and dotted lines represent the annual averages in the NH, CH, and WTH scenarios, respectively. The grey box spanning 1940 to 2000 represents the period of acidification due to S deposition. The symbols “x”, and “●” represent the annual averages of empirical measurements in the E and B horizons, respectively.

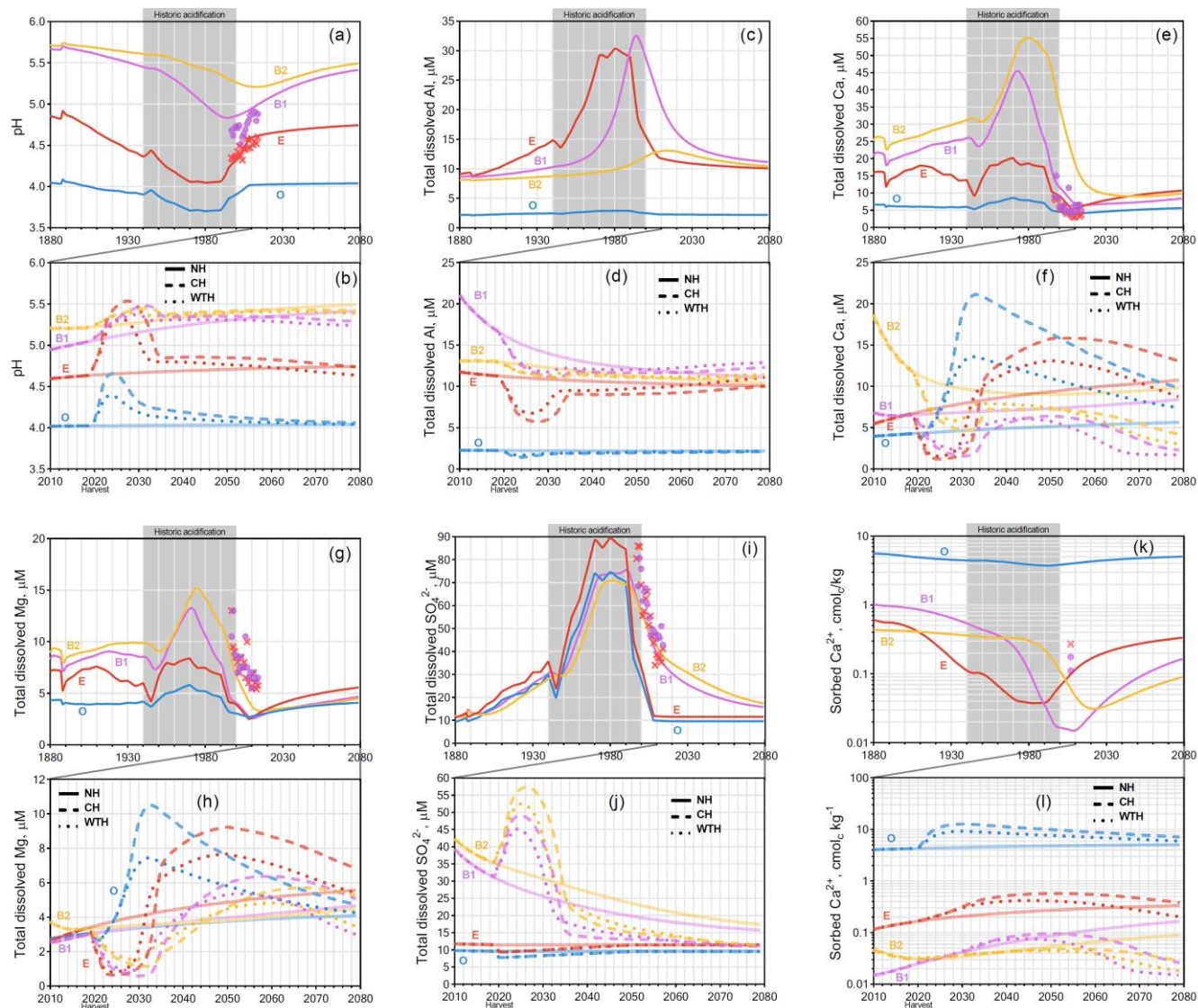


Figure 3: Kindla. Simulated mean annual pH (a and b), total dissolved Al (c and d), Ca (e and f), Mg (g and h), and SO_4^{2-} (i and j), and sorbed Ca^{2+} (k and l). Chemical dynamics in response to historic acidification (a, c, e, g, i, and k) are presented above the response to harvesting events (b, d, f, h, j, and l). The solid, dashed, and dotted lines represent the annual averages in the NH, CH, and WTH scenarios, respectively. The grey box spanning 1940 to 2000 represents the period of acidification due to S deposition. The symbols “x”, and “●” represent the annual averages of empirical measurements in the E and B horizons, respectively.

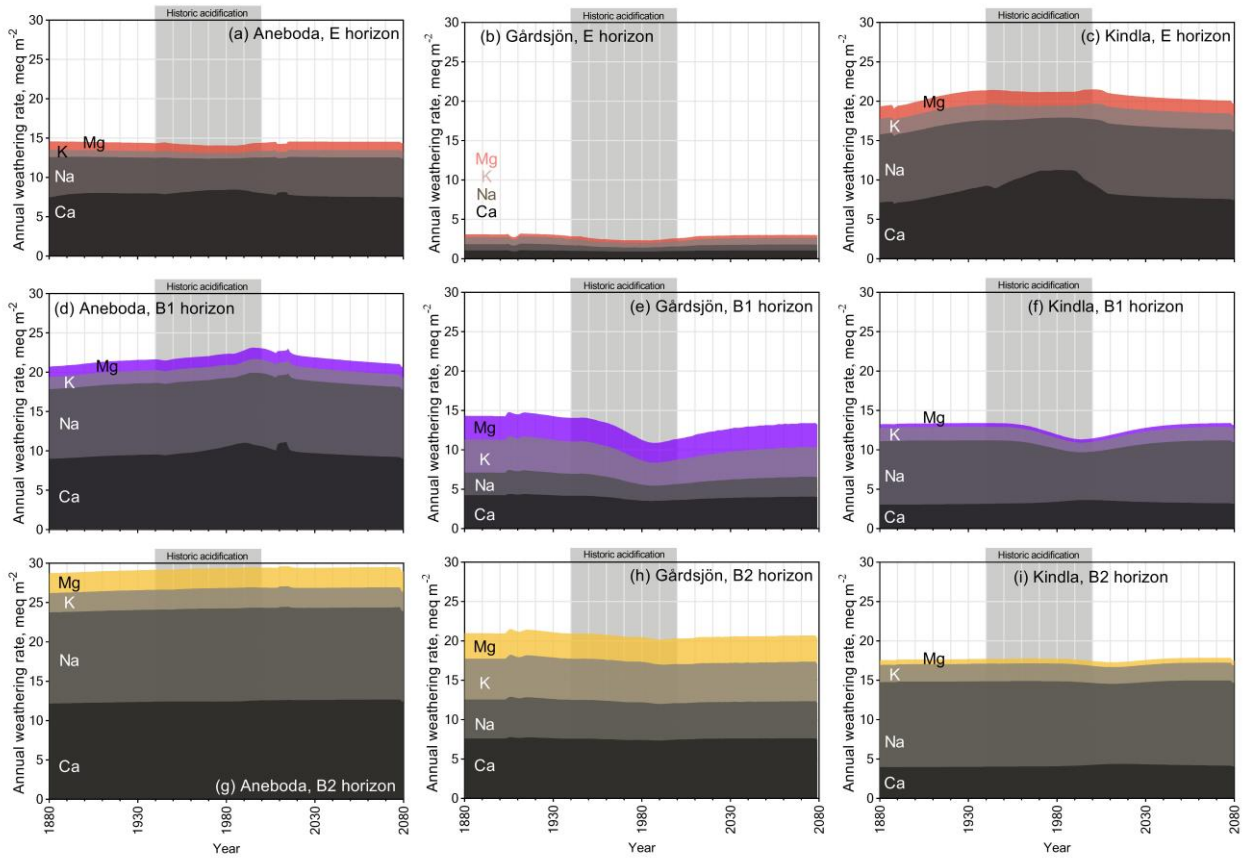


Figure 4: Stack plot of simulated base cation weathering rates in the NH scenario, with subdivisions of elemental components.

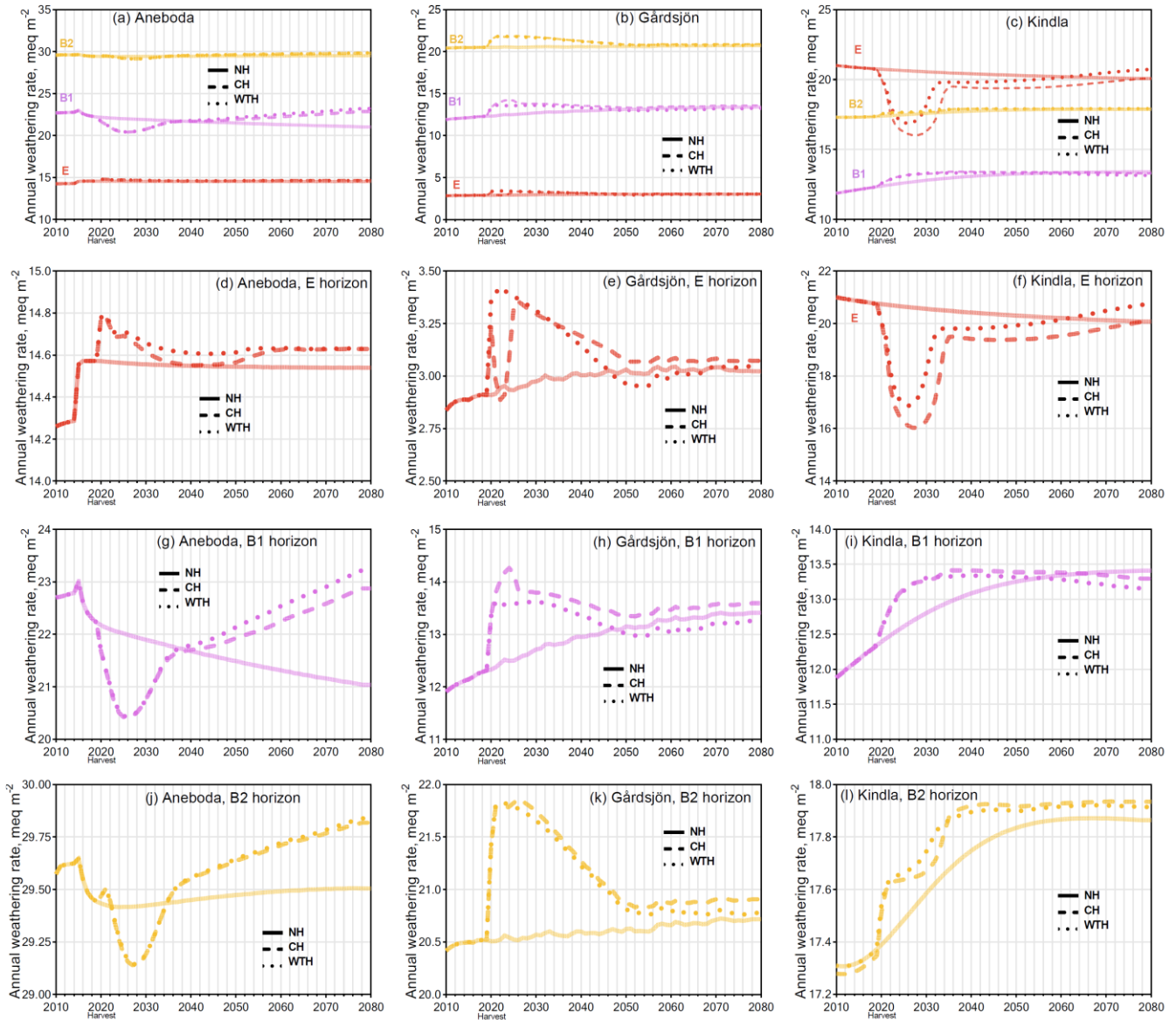


Figure 5: Simulated effects on base cation weathering rates in the conventional harvest (CH), whole-tree harvest (WTH) and NH scenarios. The time series starts in 2010 just before harvest and the graphs are scaled in order to demonstrate differences between harvest intensities at the different sites and soil horizons.