

Dear Editor,

We highly appreciated your effort and the constructive advice of both reviewers. We have revised the paper accordingly. Please find below our response to each of the points raised by the reviewers and the manuscript with marked changes.

5 With best wishes on behalf of all the co-authors,
Imke Schäfer

Anonymous Referee #1

INTRODUCTION

10 1/Page 1; Line 28: I will suggest to include at last an earlier relevant reference i.e. Eglinton et al., Nature 193: 739-742, 1962. This may be also added in other parts of the text together with Eglinton and Hamilton, 1967.
- will be included

15 2/Page 2; Line 26: depths in brackets may be deleted; this info is in the M&M section.
-will be deleted

MATERIAL AND METHODS

20 3/Page 3; Line 7 to 9: This is a long sentence, please rewrite.
-will be rewritten

4/Page 3; Line 11: "seven meters apart from each other"
-will be changed

25 5/Page 5; Line 32: I think that this is the first appearance of L for "litter", define i.e. in Page 4; Line 20
-will be defined on p.2, L37

REFERENCES:

30 6/ Killops and Killops. You may add that the text is available as a link at <http://www.eaog.org>
-will be added

7/Kirkels et al. delete "b" in "2013b"
-will be deleted

35 8/There is a very particular "possessive" treatment throughout the MS i.e. "our samples", "our *n*-alkanes", etc. This is Ok but rather unusual in a MS. The authors may consider changing the pronoun.
-we will revise the manuscript accordingly

Anonymous Referee #2

ABSTRACT

40 1/At the end you mention that a "new *n*-alkane ratio is provided to illustrate, and tentatively account for, degradation effects of *n*-alkanes". It might be good to explicitly give this *n*-alkane ratio in the abstract, as it might be expected here by the reader.
-will be added

INTRODUCTION

45 2/P2 L16 Average chain length (ACL) needs to be defined here at its first appearance.
-will be defined

50 3/P2 L31 Maybe you could describe here directly how you would "estimate the main contributing vegetation type to the soil based on *n*-alkyl leaf wax biomarker distribution".
--We will rewrite and simplify the last part of the introduction to make the aims of our study more clear.

MATERIAL AND METHODS

55 4/P3 L1 Change to "Altitude ranges from 16 to 899 m above sea level" (numbers should be from low to high).
-will be changed

60 5/P3 L6 Photographs are in Table S2. However, the descriptions of dominant plant species can be found in Table S1. Please change accordingly.
-will be changed

6/P3 L23 Isn't it important to stick to an exact timing for the derivatization, since the reaction might be incomplete if too short or derivatized compounds may become unstable if left too long at the high reaction temperatures? Therefore, the timing should also always be the same for all samples. I think "overnight" is not a good term to be used here. Maybe it was always 12h or something similar, but it still seems quite long to me.

5 -will be specified

7/P3 L24 If you were not interested in the isotopes as well (GC-IRMS measurements), then these cleaning steps seem quite exhaustive. Were isotopes also measured on these samples?

-they were measured, but not at all samples and hence, are not presented in this manuscript

10

8/Was there an internal standard used for the quantification of the alkanic acids? If so please name it.

-will be specified: we used androstane for quantification on the GC

9/P3 L28 Does this include both odd and even homologues for both alkanes and alkanic acids? Please clarify.

15 -it includes all compounds (odds as well as even ones) and will be clarified

10/P3 L29 Some studies also normalize to the carbon content of soils instead of mass. Why did you choose to use normalization to mass and what difference could it make to the results?

20 -we have not measured C_{org} contents and therefore cannot normalise accordingly. This does not affect our results and conclusions, as they depend on relative abundance of chain lengths.

11/P3 L33 Why is the C25 and the C35 not included in the ACL of alkanes?

25 -We focussed on the most abundant compounds C27 to 33. C25 and C35 are often much less abundant. Our results and conclusions are not affected by this choice.

12/P3 L34 Why is the C20, C22 and C34 not included in the ACL of alkanic acids?

-shorter chains are probably more affected by microbial activity and degradation, and C34 is much less abundant than C24 to C32.

30 13/P3 L37/38 The OEP and EOP are mostly calculated with different formulas (that have two times the numerator and the denominator also two times but shifted by 2 carbon numbers, other authors also argue for shifting the nominator instead, see Freeman and Pancost in Treatise on Geochemistry 12, page 398). Why did you choose to use these "more simple" equations for OEP and EOP, and what difference could it make to the results?

35 - There are various formulas for the OEP/EOP and the CPI (carbon preference index, see Freeman and Pancost) in use. They will in most cases all yield very similar results, so we chose the simplest one. This does not affect the conclusions of our study.

14/P4 L1 Include "while" after the comma.

40 -will be added

15/P4 L4-10 Is it not usual practice to first use the Levene Test to check for equal variances?

45 If the assumption of equal variances is not fulfilled, then an ANOVA is not the appropriate test for significance, but a non-parametric test should be used (e.g. Kruskal-Wallis)? Also for the significance test between soil horizons I am not sure if ANOVA is the right method, since they are not independent of each other. Nevertheless, I am really not a friend of over-doing (and afterwards over-interpreting) statistics just for the sake of it. If the means with their standard errors are given (or boxplots like in this manuscript) everybody should be able to judge on their own if results are different (and scientifically relevant, which I think is more important than p-values of inappropriate statistical tests).

50 -We agree that it is most important to judge if the results are scientifically relevant based on the given means and errors. However, as requested by earlier reviewer, we decided to add statistical significance tests to substantiate our interpretations.

55 Yes, it is usual practice to check for equal variances with a Levene test. That is why we wrote in section 2.4: " Equal variances were tested with a Levene Test (Levene, 1960)." Maybe it was not clear that this was tested at the beginning. In the revised test, we moved the sentence to the beginning of the paragraph to make clear that this was the first step of the analysis. The reviewer is right that in case of unequal variances the Kruskal-Wallis Test should be conducted instead of ANOVA. This has been done in the very few cases, where unequal variances were found. This had not been properly described in the text before. The text has been rewritten to explain the statistical procedure in more detail.

60 The reviewer is also right that in case of dependent samples (e.g. sampling the same population at multiple point in time) would require a so-called "ANOVA with repeated measures" or the non-parametric Friedman test. Soil horizons are arguably dependent. However, for this study we assume that they are independent. In our samples, ANOVA/Kruska-Wallis tests give clear indications of significance or non-significance. In all cases, also for the non-significant ANOVA/Kruska-Wallis tests, we conducted posthoc tests. These always confirmed the results of the previous omnibus test. Thus, we are quite certain that this decision has no influence on the results.

RESULTS

16/P4 L35 Remove last bracket.

-will be removed

5 17/P5 L1 What is the difference between OEP and CPI (apart from the name)?
-see point 14 above

18/P5 L20 Should it be “relative high n-C32 and n-C34”?

10 yes, will be changed accordingly

DISCUSSION

19/P7 L14-32 Although Figure 8 is explained in detail, it still became not clear to me, how the “endmember plot” (Figure 8) can be finally applied to correct for degradation effects.

15 -we will expand our explanation

20/P8 L1-4 Again: How would you correct for degradation (e.g. by application within a paleoenvironmental study)?

- we will explain this more explicitly

CONCLUSIONS

21/P8 L20 How would you use the CDG indices quantitatively?

-We will rephrase here, because at this point we can use the indices only semi-quantitatively to estimate the contributions of deciduous trees, conifers and grasses respectively

REFERENCES

22/Sadly, the content of the book by A.P. Field is solely on statistics and does not include further sections on sex and drugs and rock 'n' roll :-)

-will be corrected☺

30 23/For publications of the same authors, references should be sorted according to year (see for example those of Zech et al.).

-will be done

35 24/Other references not fully checked by reviewer. Please check again yourself that all references in the text are in the reference list and vice versa. Also check if all info is in the references.

-will be done

FIGURE 2

40 25/Please also add the labels (L, Ah1, Ah2) in Figure 2b to make it consistent with all the other figures. You could mention that the axes are in logarithmic scale.

-will be added

FIGURE 7

45 26/Here the (a) and (c) are not visible. Please add to figure.

-will be added

50 27/It is not clear (and also not described in the text) how the medians for vegetation types (d) are derived and what they mean. I guess, since there are only two points for grass and three for the other vegetation types, that each point represents the median of litter and soil horizons of the respective vegetation types. Please clarify.

-the guess is right we will add that

28/What is the reason for using medians instead of means?

-it are the mean values, which we believe to be more significant for our sample range than the medians

Leaf waxes in litter and topsoils along a European transect

Imke Schäfer¹, Verena Lanny², Jörg Franke¹, Timothy I. Eglinton², Michael Zech^{3,4}, Barbora Vysloužilová^{5,6} and Roland Zech¹

¹Institute of Geography and Oeschger Centre for Climate Change Research, University of Bern, 3012 Bern, Switzerland

5 ²Department of Earth Science, ETH Zurich, 8092 Zurich, Switzerland

³Landscape- & Geoecology, Faculty of Environmental Sciences, Technical University of Dresden, 01062 Dresden, Germany

⁴Institute of Agronomy and Nutritional Sciences, Soil Biogeochemistry, Martin-Luther University Halle-Wittenberg, 06120 Halle, Germany

⁵Institute of Archaeology of Academy of Science of the Czech Republic, Letenská 4, 11801 Praha 1, Czech Republic

10 ⁶Laboratoire Image, Ville, Environnement, UMR 7362, CNRS/ Université de Strasbourg, 67083 Strasbourg Cedex, France

Correspondence to: Imke Schäfer (imke.schaefer@giub.unibe.ch)

Abstract. Lipid biomarkers are increasingly used to reconstruct past environmental and climate conditions. Leaf wax derived long chain *n*-alkanes and *n*-alkanoic acids may have great potential for reconstructing past changes in vegetation, but the factors that affect the leaf wax distribution in fresh plant material, as well as in soils and sediments are not yet fully understood and need further research. We systematically investigated the influence of vegetation and soil depth on leaf waxes in litter and topsoils along a European transect. ~~Our~~The deciduous forest sites are often dominated by the *n*-C₂₇ alkane and *n*-C₂₈ alkanolic acid. Conifers produce few *n*-alkanes, but show high abundances of the C₂₄ *n*-alkanoic acid. Grasslands are characterized by relatively high amounts of C₃₁ and C₃₃ *n*-alkanes and C₃₂ and C₃₄ *n*-alkanoic acids. Chain length ratios thus may allow to distinguish between different vegetation types, but caution must be exercised given the large species-specific variability of chain length patterns. An updated endmember model with ~~a~~the new *n*-alkane ratio $\frac{(n-C_{31}+n-C_{33})}{(n-C_{27}+n-C_{31}+n-C_{33})}$ is provided to illustrate, and tentatively account for, degradation effects on *n*-alkanes.

1 Introduction

To improve our understanding of ongoing environmental changes and to predict more precisely consequences of future climate change, it is important to investigate the magnitude of, and interactions between, climate and environmental variations in the past. Lipid biomarkers are well preserved in many geological archives and are increasingly used for paleoclimate and paleoenvironmental reconstructions (Eglinton and Eglinton, 2008). Long chain *n*-alkanes (> C₂₅) and *n*-alkanoic acids (> C₂₀) for example are essential constituents of epicuticular leaf waxes and thus serve as specific biomarkers for higher terrestrial plants (Eglinton et al., 1962; Eglinton and Hamilton, 1967; Otto and Simpson, 2005).

Leaf wax *n*-alkanes typically show an odd-over-even predominance (OEP; Eglinton and Hamilton, 1967). The relative odd homologue abundance may be useful to discriminate between different vegetation types: C₂₇ and C₂₉ have been reported to be predominant in leaf waxes of trees and shrubs, whereas C₃₁ and C₃₃ mostly derive from grasses and herbs (Maffei, 1996, Maffei et al., 2004; Rommerskirchen et al., 2006, Zech et al., 2009; Lei et al., 2010; Kirkels et al., 2013). From this distribution, ~~various~~ *n*-alkane ratios have been proposed that allow estimating the main contributing vegetation type to a paleosample ~~and used for paleovegetation reconstruction~~ (Schwark et al., 2002; Zech et al., 2009; Lei et al., 2010; Schatz et al., 2011; Wiesenberg et al. 2015). Where pollen are preserved, leaf wax and pollen records are in good agreement (e.g. Brinchat et al., 2000; Schwark et al., 2002; Zech et al., 2010, Tarasov et al., 2013). In contrast, a recent study that summarises *n*-alkane patterns in modern plants from all over the world, showed no discrimination power for vegetation reconstruction at a global scale (Bush and McInerney, 2013), so regional calibration studies may be more appropriate. Additionally, the accuracy of *n*-alkane records remains somewhat uncertain due to several potential pitfalls:

40 i) Leaf wax production and concentration can vary widely between species (e.g. Diefendorf et al., 2011; Bush and McInerney, 2013). Moreover, species abundance in an ecosystem controls leaf wax signals in soils and sediment.

ii) Several studies reported long chain *n*-alkanes not only in leaves, but also in other plant parts (roots, stems, blossoms; e.g. Wöstmann, 2006, Jansen et al., 2006, Kirkels et al., 2013, Gocke et al., 2013), but in these studies the patterns show preferential synthesis of shorter chains ($<n-C_{25}$) with low OEPs, and much lower *n*-alkane concentrations (three to ten times) than in leaves.
iii) Leaf waxes are affected by mineralization and degradation (e.g. Zech et al., 2009; Nguyen Tu et al., 2011; Zech et al., 2011a). As OEP values become lower during degradation, Zech et al. (2009) and Buggle et al. (2010) proposed procedures to quantify and correct *n*-alkane ratios for degradation using the OEP.

iv) Apart from vegetation type, many environmental parameters may influence leaf wax patterns, for example temperature and precipitation (e.g. Poynter et al., 1989; Sachse et al., 2006; Tipple and Pagani, 2013; Bush and McInerney, 2015), as well as radiation, nutrient and water availability, salinity, mechanical stress and pollution (e.g. Shepherd and Wynne Griffiths, 2006; Guo et al., 2014). Sachse et al. (2006) and Duan and He, (2011) found longer chain lengths at lower latitudes, which could indicate (i) enhanced loss of shorter *n*-alkanes with increasing evaporation and (ii) preferential production of long chain *n*-alkanes, providing better protection against evaporation at higher temperatures and radiation. Schefuß et al. (2003) reported a higher *n*-C₃₁ vs. *n*-C₂₉ abundance in dust samples from drier regions along the West African margin and suggested that humidity may be the driving factor. Bush and McInerney (2015) showed a correlation between Average chain length (ACL) and temperature along a transect throughout the central United States and concluded that temperature is directly responsible for the synthesis of longer chain length.

So far, only few studies have investigated homologue long chain *n*-alkanoic acid patterns in plants, soils and sediments (e.g. Almendros et al., 1996; Marseille et al., 1999; Bull et al., 2000b; Zocatelli et al., 2012; Feakins et al., 2014, Wiesenberg et al. 2015). Leaf wax *n*-alkanoic acids have a distinct even-over-odd predominance (EOP; Eglinton and Hamilton, 1967). Zocatelli et al. (2012) found *n*-C₂₆ to be predominant in grassland soil relative to forest soil, whereas the forest soils contained *n*-C₂₂ to *n*-C₂₈ in greater amounts. Since *n*-alkane patterns alone seem to not always allow a reliable conclusion about the dominant vegetation type, there is an urgent need to more systematically investigate and understand the factors controlling the homologue *n*-alkanoic acid patterns.

In order to contribute to a better understanding of the various factors controlling leaf wax patterns~~For the present study,~~ we collected and analysed litter and topsoil samples in deciduous and coniferous forests and from ~~and two topsoil layers below~~ grasslands along a transect in Central Europe. ~~as well as below deciduous and coniferous forests (0–3 cm depth, 3–10 cm depth), because one would expect the strongest changes in the original plant derived leaf wax patterns throughout degradation and microbial reworking of organic material in the topsoil. As the vegetation mixture along our the transect never consists and probably in the past never consisted solely of one vegetation type we defined forests with a dominance (>80%) of deciduous/~~
~~coniferous trees as deciduous or coniferous forests, respectively. This represents the natural past vegetation composition and may allow estimating the main contributing vegetation type to the soil based on *n*-alkyl leaf wax biomarker distribution. It will also help to overcome pitfall (i) As we stated above in pitfall (iv) the climate can also influence the leaf wax distribution, so we chose a transect with relatively low climate fluctuations.~~

Specifically our study aims to evaluate

- 35 (i) the role of different vegetation types for *n*-alkane and *n*-alkanoic acid chain length patterns and
(ii) effects of degradation on leaf wax patterns.

Sampling litter and topsoil samples rather than individual plants or plant parts has the advantage of integrating over the whole ecosystem and implicitly taking into account variable production and concentration of leaf waxes between species, individual plants and plant parts. Such an approach also implicitly accounts for the fact that vegetation types do generally not totally dominate a specific ecosystem, but mostly co-occur to a variable degree. For example, we defined forests with a dominance >80% of deciduous/ coniferous trees as deciduous or coniferous forests, respectively, and forests generally have some grass and herb understory as well. Our study shall thus provide leaf wax patterns for ecosystems dominated by specific vegetation types, and those patterns shall be a sound basis for comparing and interpreting leaf wax patterns from paleosols or sediments.

[Changes in leaf wax patterns from litter to the topsoil are expected to indicate effects of degradation and microbial reworking of organic material in the topsoil. Differences in climatic conditions along the transect are not very pronounced, so this paper can't focus on potential direct climatic effects on leaf wax patterns.](#)

2 Material and Methods

5 2.1 Geographical setting and sampling

In 2012 and 2014, we collected litter ([L](#)) and topsoil samples (Ah1: 0-3 cm; Ah2: 3-10 cm) from 26 locations along a transect in Central Europe (Fig. 1). The samples BRO, HUB, HUG, HUM, HUR and KOC were kindly provided by B. Vysloužilová, more information about sampling and regional setting of these locations can be found in Vysloužilová et al. (2015). The study area is in general characterized by relatively mild temperatures and moderate rainfall. The mean annual air temperature along
10 the transect ranges from 5.5 to 11.0° C, and mean annual precipitation ranges from 470 to 1700 mm (see Table S1 for individual data and data source). Altitudes range from [899-16](#) to [16-899](#) m above sea level. The natural vegetation consists of grasslands in the south of the transect and a higher amount of deciduous broadleaf and mixed forests (varying percentages of deciduous trees and conifers) in the north. Also, the proportion of evergreen conifers increases northwards.

We sampled soils in forests with a dominance of deciduous and coniferous trees, respectively, as well as soils below grasslands
15 (referred to as “dec”, “con” and “grass” in the following text and figures). Photographs of the sampling sites and descriptions of the dominant vegetation are provided in Table S2 [and Table S1, respectively](#). For ~~our~~[the](#) dec and con sites, we could collect litter samples, but the grass sites virtually had no litter. Sampling sites were chosen in forests with large old trees, indicating a stable environment for more than approximately 30 years. [This limiting limit](#) the risk that a vegetation change might have influenced the leaf wax signal in the soil, as leaf waxes are stable over long time periods (e.g. Derenne and Largeau, 2001).

20 Please note that our grass sites can be dominated by grasses, herbs or heaths. Soil and litter samples at each site were composites from three sampling points approximately five to seven meters [apart](#) from each other.

2.2 Lipid analysis

Lipids were extracted from 1-6 g freeze-dried and grinded samples by microwave extraction with 15 ml dichloromethane (DCM)/methanol (MeOH) (9:1) at 100 °C for 1 h. Each total lipid extract was passed over a pipette column filled with
25 aminopropyl silica gel as stationary phase (Supelco, 45 µm). The apolar fraction (incl. *n*-alkanes) was eluted with hexane, more polar compounds (e.g. alcohols) with DCM/MeOH (1:1), and acids (incl. *n*-alkanoic acids) with 5% acetic acid in diethyl ether. The *n*-alkanes were purified by passing the apolar fraction over a pipette column filled with activated AgNO₃ impregnated silica gel (to retain unsaturated compounds) and another pipette column filled with zeolite (Geokleen). After drying, the zeolite (containing straight chain compounds) was dissolved in HF and the *n*-alkanes were recovered by liquid-
30 liquid extraction with hexane. For quantification, the *n*-alkane fractions were spiked with a known amount of the 5 α -androstane and analysed with an Agilent 7890 gas chromatograph (GC) equipped with a VF1 column (30 m length \times 0.25 mm i.d., 0.25 µm film thickness) and a flame ionization detector (FID).

The *n*-alkanoic acids were converted to fatty acid methyl esters (FAMES) with MeOH/HCl (95/5; 70°C, [overnight8h](#)). The FAMES were recovered by liquid-liquid extraction with hexane and cleaned over silica, AgNO₃ and zeolite columns as
35 described above before quantification with GC-FID. [For quantification of the FAMES 5 \$\alpha\$ -androstane was again used as internal standard](#). Unfortunately, due to some problems during FAME preparation, not all samples were available for methylation (missing samples: BRO, HUB, HUG, HUM, HUR, KOC).

2.3 Leaf wax proxies

Total *n*-alkane and *n*-alkanoic acid concentrations (c_{tot}) are calculated as sum of C_{25} to C_{35} and C_{20} to C_{34} (odd as well as even ones), respectively and given in $\mu\text{g/g}$ dry weight (dw).

Changes in the average chain length (ACL) of *n*-alkyl lipids can show changes in the input of vegetation type. The ACL was determined by modifying the equation of Poynter et al. (1989). We used odd chain lengths only for *n*-alkanes (Eq. 1), and even chain lengths for *n*-alkanoic acids (Eq. 2), respectively.

$$\text{ACL} (n - \text{alkanes}) = \frac{27 \times n-C_{27} + 29 \times n-C_{29} + 31 \times n-C_{31} + 33 \times n-C_{33}}{n-C_{27} + n-C_{29} + n-C_{31} + n-C_{33}} \quad (1)$$

$$\text{ACL} (n - \text{alkanoic acids}) = \frac{24 \times n-C_{24} + 26 \times n-C_{26} + 28 \times n-C_{28} + 30 \times n-C_{30} + 32 \times n-C_{32}}{n-C_{24} + n-C_{26} + n-C_{28} + n-C_{30} + n-C_{32}} \quad (2)$$

The odd-over-even predominance (OEP) of the *n*-alkanes (Eq. 3) and the even-over-odd predominance (EOP) of the *n*-alkanoic acids (Eq. 4) can be used as proxy for degradation and was determined after Hoefs et al. (2002):

$$\text{OEP} = \frac{n-C_{27} + n-C_{29} + n-C_{31} + n-C_{33}}{n-C_{26} + n-C_{28} + n-C_{30} + n-C_{32}} \quad (3)$$

$$\text{EOP} = \frac{n-C_{24} + n-C_{26} + n-C_{28} + n-C_{30} + n-C_{32}}{n-C_{23} + n-C_{25} + n-C_{27} + n-C_{29} + n-C_{31}} \quad (4)$$

High OEP values are characteristic for fresh plant material, while with ongoing SOM degradation in the topsoil the OEP values decrease (e.g. Buggle et al. 2010; Zech et al. 2009, 2011b).

2.4 Statistical analysis

First, we tested if the data are normally distributed (Shapiro and Wilks, 1965) and if variances of the samples are equal (Levene, 1960). In case of normality and equal variances, we conducted an Analysis of Variance (ANOVA), otherwise a Kruskal-Wallis Test, to check for significant differences ($\alpha=0.05$) between depths horizons within the same vegetation type and between vegetation types within the same horizon, respectively. If the ANOVA/Kruskal-Wallis Test indicated significant differences in the means, we applied a so-called "post-hoc" test to identify, which of the means differ, accounting for the effect of multiple testing. The appropriate posthoc test was selected as recommended by Field, 2013: For samples with equal size and equal variance, we applied the Tukey's Honest Significance test (Tukey, 1949). In case of equal variance and unequal sample size, we used the Hochberg test (Hochberg, 1988) and for unequal variances the Games-Howell test (Games and Howell, 1976).

3 Results

3.1 Leaf wax *n*-alkane abundances and chain length patterns

All samples show a dominance of long ($>C_{25}$) odd chain *n*-alkanes, characteristic for epicuticular leaf waxes (e.g. Eglinton et al., 1962; Eglinton and Hamilton, 1967; Rieley et al., 1991; Collister et al., 1994). Total *n*-alkane concentrations (C_{tot}) range from 0.4 to 1468 $\mu\text{g/g}$ dw (Table S3). Such concentrations and huge variability are in agreement with published data from fresh plant material (e.g. Diefendorf et al., 2011; Hoffmann et al., 2013) and from soil and sediments (e.g. Marseille et al., 1999; Freeman and Colarusso, 2001; Liebezeit and Wöstmann, 2009). Differences exist depending on the vegetation type and litter/soil horizon (Fig. 2a), but are mostly not significant (Table S4).

Differences in chain length patterns between deciduous forests, coniferous forests and grasslands are illustrated in Fig. 3 for litter (a), Ah1 (b) and Ah2 (c). The deciduous forest samples are strongly dominated by $n-C_{27}$, although its relative abundance decreases from litter to Ah2. However, most of our sampling sites are dominated by beech trees (L11, L13, L14, L16, L17, L18, L20 and L23) that are known to produce mostly $n-C_{27}$ (Bush and McInerney, 2013 and references therein). To check whether the observed $n-C_{27}$ dominance could be explained only with the presence of beech we performed the same correlations

and plots as mentioned above, excluding the beech dominated sites. Figure S5 shows that the dominance of $n\text{-C}_{27}$ is here less pronounced and get lost in Ah2. Grass sites are dominated by $n\text{-C}_{31}$ and are also characterized by high abundances of $n\text{-C}_{33}$ compared to deciduous sites. ~~Our~~The con sites show a pattern very similar to that of our grass sites.

The ACLs of the grass and con sites are significantly higher than those of the dec sites (Fig 4a; grass: Ah1= 30.5; Ah2= 30.3; dec: Ah1= 28.6; Ah2= 29.6, see Table S6 for p-values). Without the beech dominated sites, the dec sites ACL shifts to higher values, but they are still significantly lower than mean ACLs of the grass sites (Figure S 7a). However, significant differences get lost in Ah2 (Table S6). ~~Our~~The dec litter samples have lower ACLs (27.5) than the Ah1 (28.6) and Ah2 (29.6). Our grass samples show almost no decrease in ACL from Ah1 (30.5) to Ah2 (30.3), the con sites likewise show no significant decrease from L to Ah2 (Table S6).

To study past changes in dec vs. grass vegetation, various n -alkane ratios have been proposed and used (e.g. Zhang et al., 2006; Lei et al., 2010; Bush and McInerney, 2013; Zech et al., 2013a; Zech et al., 2013b). We tested several n -alkane ratios ($n\text{-C}_{33}/(n\text{-C}_{27}+n\text{-C}_{33})$, $(n\text{-C}_{31}+n\text{-C}_{33})/(n\text{-C}_{27}+n\text{-C}_{31}+n\text{-C}_{33})$, $(n\text{-C}_{31}+n\text{-C}_{33})/(n\text{-C}_{27}+n\text{-C}_{29}+n\text{-C}_{31}+n\text{-C}_{33})$) and found the largest differences between ~~our~~grass and dec samples for the ratio $(n\text{-C}_{31}+n\text{-C}_{33})/(n\text{-C}_{27}+n\text{-C}_{31}+n\text{-C}_{33})$. It is low in the dec samples and high in the grass samples (Fig. 4b, dec L: 0.08; Ah1: 0.29; Ah2: 0.56; grass Ah1: 0.79; Ah2: 0.78). Differences between dec and grass are significant in Ah1 and Ah2 (Table S8). Without the beech dominated sites the ratio becomes higher for dec, but still shows significant differences between dec and grass (Figure S7b, Table S8).

The OEP (or CPI, carbon preference index, which is very similar to the OEP) is often regarded as proxy for the preservation status of the leaf wax derived n -alkanes (e.g. Huang et al., 1996; Tipple and Pagani, 2010; Vogts et al., 2012; Wang et al., 2014 and references therein). High OEPs are characteristic for fresh plant material and modern soils (Kirkels et al., 2013; Diefendorf et al., 2011; Collister et al., 1994), whereas low OEPs indicate degradation of n -alkanes during pedogenesis and early diagenesis (Marseille et al., 1999; Freeman and Colarusso, 2001; Bugge et al., 2010; Zech et al., 2011a; Wang et al., 2014). OEPs in ~~our~~the samples range from 3 to 32.8, typical for fresh plant material and soils (Table S3). Values significantly decrease from litter (18.4) to Ah1 (12.1) and Ah2 (6.8) for ~~the~~our dec sites, a minor decrease can be observed in ~~our~~the grass sites (Fig. 4c, Table S9). Significant differences occur between dec and grass sites in all horizons (Table S9).

25 3.2 Leaf wax n -alkanoic acid abundances and chain length patterns

All samples show high abundances of long ($>C_{20}$) even chain n -alkanoic acids (Table S10), characteristic for epicuticular leaf waxes (Eglinton and Hamilton, 1967). Many samples also have large amounts of C_{16} and C_{18} , yet those are ubiquitous and cannot be considered as leaf wax biomarkers. Total n -alkanoic acid concentrations (c_{tot} , refers here to the sum of C_{20} to C_{34}) range from 3 to 854 $\mu\text{g/g}$ dw, consistent with previous studies (e.g. Marseille et al., 1999; Jandl et al., 2002). As for the n -alkanes, total n -alkanoic acid concentrations vary between the vegetation types and horizons (Fig. 2b). In general, c_{tot} decreases from litter to Ah1 and Ah2. In contrast to the n -alkanes, highest n -alkanoic acid concentrations occur in our con samples. Decrease from Litter to Ah1 and Ah2 are only significant in ~~our~~the dec samples (Table S11).

The n -alkanoic acid chain length patterns show differences between the different vegetation types (Fig. 3d: litter; 3e: Ah1; 3f: Ah2). While ~~our~~the dec samples are dominated by $n\text{-C}_{28}$, the con samples show a maximum for the shorter homologue $n\text{-C}_{24}$ in the litter, Ah1 and Ah2. The grass sites have high abundances of $n\text{-C}_{24}$ to $n\text{-C}_{30}$, but when compared to dec and con, the relative high $n\text{-C}_{32}$ and $n\text{-C}_{34}$ abundances are distinct.

Significant differences in the ACL between the three vegetation types exist and reflect the above mentioned predominance of various homologues (Fig. 5a, Table S12). While ~~our~~the grass sites show a tendency to higher ACLs, the con sites tend to have the lowest values. Differences stay significant, even in Ah1 and Ah2 (Table S12).

On the basis of the above mentioned significant differences between the ACL and the three vegetation types we propose the following three indices, dubbed CDG indices (Eq. 5,6,7) for coniferous forests (C), deciduous forests (D) and grasslands (G):

$$\text{Index C} = \frac{n\text{-C}_{24}}{n\text{-C}_{24} + n\text{-C}_{28} + n\text{-C}_{32} + n\text{-C}_{34}} \quad (5)$$

$$\text{Index D} = \frac{n-C_{28}}{n-C_{24} + n-C_{28} + n-C_{32} + n-C_{34}} \quad (6)$$

$$\text{Index G} = \frac{n-C_{32} + n-C_{34}}{n-C_{24} + n-C_{28} + n-C_{32} + n-C_{34}} \quad (7)$$

Index C ranges from 0.25 to 0.91 with the highest values for the con sites (Fig. 6a) and shows significant differences between our con and dec samples, as well as between the con and grass in all horizons, but not between ~~our~~the dec and grass locations (Table S13). Index D ranges from 0.03 to 0.62 and has highest values for the dec sites (Fig. 6b). It differs significantly between all vegetation types in L, Ah1 and Ah2, except for con and grass sites in Ah2. It also significantly decreases from L to Ah1 and Ah2 in ~~our~~the dec sites (Table S14). Index G ranges from 0.00 to 0.37 and discriminates between forest and grass sites, with systematically higher values for the grass sites (Fig. 6c). Like Index D, Index G shows significant differences between all three vegetation types in all horizons, except for the con and dec locations in Ah1. The Index likewise shows a significant decrease from L to Ah2 in ~~our~~the dec samples (Table S15). The CDG indices can conveniently be plotted in ternary diagrams, which illustrate the clusters for the different vegetation types and the scatter within the cluster (Fig. 7).

EOPs in our samples range from 1.2 to 9.9 (Table S16), typical for *n*-alkanoic acids that originate from epicuticular leaf waxes and are found in soils (Killips and Killips, 2005). The EOP decreases significantly from litter to Ah1 and Ah2 in the dec samples (L: 4.3; Ah1: 3.46; Ah2: 2.85 Fig. 5b; Table S16), and without significance in the con samples (L: 4.0; Ah1: 3.8; Ah2: 2.81).

4 Discussion

4.1 *n*-Alkane pattern in ~~vegetation~~litter and topsoil

The lower c_{tot} values of ~~our~~the con litter samples compared to the dec litter (median con: 30.9 $\mu\text{g/g dw}$; dec: 80.4 $\mu\text{g/g dw}$) are in good agreement with findings of much lower *n*-alkane abundances in conifer needles than deciduous leaves (e.g. Sachse et al., 2006; Zech et al., 2009; Diefendorf et al., 2011; Norris et al. 2013; Tarasov et al., 2013) and in forest soils below conifers (e.g. Almendros et al., 1996). Given these low reported *n*-alkane concentrations in conifer needles, we refer the *n*-alkane patterns in ~~our~~the con litter and topsoil samples to the *n*-alkane input from the understory, and we focus in the following discussion on the differences between grass and dec sites. Our grass soils have very low *n*-alkane abundances (median Ah1, 3.5 $\mu\text{g/g dw}$), which we interpret to be an artefact of (former) plowing and admixture with inorganic soil material. Based on ~~our~~the data we therefore cannot infer a low *n*-alkane production in grass sites.

4.1.1 *n*-Alkanes to distinguish between vegetation types

The domination of *n*-C₂₇ in our dec samples in all horizons, and the relatively high concentration of *n*-C₃₁ and *n*-C₃₃ in ~~our~~the grass samples, implies that the established source specific compounds, at least along ~~our~~the transect, allow conclusion on the vegetation type that generated them. However, Figure S5 proves that the pattern is less specific when the beech dominated sites are excluded. This supports former results and shows that *n*-C₂₇ is strongly produced by beech trees (Bush and McInerney, 2013 and references therein). The ACL and our proposed *n*-alkane ratio $(n-C_{31}+n-C_{33})/(n-C_{27}+n-C_{31}+n-C_{33})$, show significant differences between ~~our~~the dec and ~~our~~the grass sites in Ah1 and Ah2, even when the beech dominated sites are excluded (Table S6, S8). Although *n*-C₂₇ is not the dominant long odd chain *n*-alkane in Ah2 at the dec locations that are not dominated by beeches, its percentage in the dec samples is still higher than at the grass sites (Figure S5), whereas the percentage of *n*-C₃₁ and *n*-C₃₃ is the highest in the grass sites in Ah1 as well as in Ah2. So our results corroborate, at least for ~~our~~the studied transect, that the ACL and our proposed *n*-alkane ratio $(n-C_{31}+n-C_{33})/(n-C_{27}+n-C_{31}+n-C_{33})$ allow to differentiate between the input of dec and grass vegetation. Care has to be taken when interpreting paleovegetation changes solely on the dominance of one *n*-alkane compound over the others (e.g. proxies like C_{max} , Wiesenberg et al. 2015), because this might lead to an underestimation of the deciduous tree input, at least when beech trees were not the main contributors to the soil. Nevertheless,

we strongly emphasize that ~~our~~the observed patterns are very likely a regional phenomenon and our results should not be transmitted to other regions with different climate and vegetation types, because *n*-alkane patterns do not work on a global scale (Bush and McInerney, 2013). Thus, our results underline the need of regional calibrations for the *n*-alkane pattern, because they corroborate its potential for paleovegetation reconstruction on a regional base.

5 Although significant differences occur between the dec and grass sites OEP in Ah1 and Ah2, we would not recommend to use the OEP as a proxy to distinguish between the two vegetation types, because it can very likely show significant decreases with ongoing soil depth, as it does in ~~our~~the dec samples (Table S9) so it is probably strongly influenced by degradation and microbial reworking.

4.1.2 Influence of soil depth on the *n*-alkane pattern

10 Although we observed no significant decreases in C_{tot} from L to Ah1 and Ah2 for the dec and con sites and from Ah1 to Ah2 for all three vegetation forms (Table S4), the slightly decreasing trends in Figure 2a are most likely due to lipid degradation and admixture with inorganic soil material.

As stated above, the significant decrease in OEP from L to Ah2 in ~~our~~the dec samples (Fig. 4c, Table S9) is probably due to degradation effects. So, despite the wide range of OEPs in modern plants (Bush and McInerney, 2013 and references therein),

15 the OEP can serve as a degradation proxy along our transect. The OEPs in ~~our~~the grass samples show no significant decrease from Ah1 (7.2) to Ah2 (6.5), but the degradation effects here are probably biased by plowing and mixing of Ah1 and Ah2.

The decrease in the relative percentage of the dominant *n*-alkane(s) in ~~our~~the dec and grass samples from L to Ah1 and from Ah1 to Ah2 (Fig. 3 a-c) as well as the significant increase in ACL from L to Ah2 in the dec samples (Fig. 4a, Table S6) is probably another indication for the effect of degradation on the *n*-alkane pattern. Our grass samples show an insignificant, but

20 decreasing trend in ACL from Ah1 (30.5) to Ah2 (30.3). These observed changes are consistent with the notion that the more abundant homologues are preferentially degraded and lost during pedogenesis. This affects *n*-alkane patterns in soils and sediments (Zech et al., 2009, Zech et al., 2013a; Zech et al., 2013b). Degradation also affects our ratio $(n-C_{31}+n-C_{33})/(n-C_{27}+n-C_{31}+n-C_{33})$ which is expressed in the significant increases in the dec samples from litter (0.08) to Ah1 (0.3) to Ah2 (0.56) and in the slightly decreasing trend in the grass samples from 0.84 to 0.80 (Fig 4b, Table S8).

25 In order to illustrate and correct for degradation effects, Zech et al. (2009) proposed an endmember model, which was later modified by Zech et al. (2013a) and Zech et al. (2013b). We added ~~our~~the dec and grass samples to the dataset for Europe, provided by Zech et al. (2013b). Figure 8 shows the new endmember plot and illustrates that our *n*-alkane ratio differs between grass and dec samples and that it changes depending on the OEP, i.e. with degradation. As described already above, the *n*-alkane ratio is wider for grass samples and lower values are more typical for dec. With increasing degradation, differences seem to become less: the trend lines, or “degradation lines”, for grass and dec converge. [In principle, the endmember model allows to tentatively correct for degradation effects and to quantify the contribution of grasses versus deciduous trees in \(paleo\)samples: The equations in Fig. 8 are used to calculate the grass and tree endmember for a specific OEP, and following the rule of proportion %grass can then be estimated as](#)

$$\% \text{grass} = \frac{(n\text{-alkane ratio}_{\text{sample}} - \text{equation}_{\text{degradation line trees}})}{(\text{equation}_{\text{degradation line trees}} - \text{equation}_{\text{degradation line trees}})} \quad (8)$$

35 Again, we tested whether the endmember plot can be explained only by the presence of beech by applying the same model and plot without the beech dominated sites. The dec degradation line shifts upward, closer to the grass degradation line (Figure S17), and R^2 drops from 0.25 to only 0.1, but it still shows a separation of the dec samples from the grass samples. Four sites plot particularly high above the dec degradation line and deserve a closer look. Sample location L19 is a birch forest surrounded by fields, and L26-2 dec is an open forest with birch and oak trees, with a lot of grasses in the understory. For both sites, the

40 *n*-alkane ratios for Ah1 and Ah2 plot much closer to the grass degradation line than the litter samples, and we speculate that both sites may have been grasslands in the past that were only recently reforested. Since turnover times of *n*-alkanes are in the order of decades (e.g. Amelung et al. 2008 and references therein, Wiesenberg et al. 2004) we would expect to see the *n*-alkane

pattern prior to reforestation in the upper soil. Unfortunately we do not have information about former land use at ~~our~~the study locations to verify this speculation. The sample locations L22 (acer, elder, ash, poplar) and L26-1 (acer, oak, beech, fir) are characterized by litter samples that plot close to the grass degradation line. We cannot exclude that these litter samples and sites are affected by *n*-alkane input from grasses, but likely the data simply reflect the large species-specific variability of *n*-alkane patterns reported repeatedly in the literature (e.g. Diefendorf et al. 2011; Bush and McInerney 2013).

In summary, our results show that

(i) *n*-alkane patterns are systematically different between the investigated dec and grass sites,

(ii) soil depth/degradation affects the homologue patterns, and

(iii) endmember modelling is a useful tool for paleovegetation reconstruction along ~~our~~the transect, but one needs to be aware of the uncertainties related mainly to the large species-specific variability of the *n*-alkane patterns. However, the fact that coniferous trees produce only few *n*-alkanes makes respective paleovegetation reconstructions “blind” for coniferous trees.

4.2 *n*-Alkanoic acid pattern in ~~litter~~vegetation and topsoil

To the best of our knowledge, this is the first study which systematically investigates long chain *n*-alkanoic acid patterns in litter and topsoil along a transect that encompasses a range of environmental conditions and vegetation types. Since differences in con concentration compared to dec are much more pronounced in the topsoil than in the litter, we infer that better preservation of *n*-alkanoic acids in soils under coniferous forests is the reason for the observed differences, and not higher alkanoic acid production by conifers. This is further consistent with studies showing better preservation of alkanoic acids in soils with low pH typical for coniferous forests, while *n*-alkanes are better preserved in soils with a high pH, more typical for deciduous forests (Bull et al., 2000a; Zocatelli et al., 2012). We again attribute the low C_{tot} in ~~our~~the grass sites mainly to plowing and admixture with inorganic soil material.

4.2.1 *n*-Alkanoic acids to distinguish between vegetation types

The *n*-alkanoic acid distribution in the vegetation types implies that specific compounds can be used to characterize them (Fig. 3d, e, f). The *n*-C₂₄ alkanoic acid can represent the input of conifers in L, Ah1 and Ah2, *n*-C₂₈ shows the contribution of deciduous trees in all horizons and the relative amount of *n*-C₃₂ and *n*-C₃₄ can be used to estimate the grass contribution. From that, we suggest the CDG Indices. They show strong differences between the three vegetation types (Fig. 6, Table S13-15) which are significant in nearly all horizons, apart from Index C which does not allow a distinction between dec and grass sites (Table S13). The ternary plots of the three indices visualize the discrimination potential by showing clusters for the different vegetation types, although we have to emphasize that outliers exist (Fig. 7 a-c). Index C based on the dominance of the shorter chain *n*-alkanoic acid C₂₄, which might be stronger affected by microbial degradation and reworking compared to the longer chain counterparts *n*-C₂₈, *n*-C₃₂ and *n*-C₃₄ that are included in the D and G Index (section 4.2.2). The ACL of the *n*-alkanoic acids on the other hand may not be a particularly useful proxy for paleovegetation, because the observed differences are small (although they are significant, Table S12) and mixing a con and grass signal could falsely yield a dec signal.

4.2.2 Influence of soil depth on the *n*-alkanoic acid pattern

The significant decrease in C_{tot} of ~~our~~the dec and con samples from L to Ah2 (Table S11) is most likely attributed to enhanced degradation effects on the acids with ongoing soil depth.

The preferential loss of *n*-C₂₈ (*n*-C₂₄) in ~~our~~the dec samples (con samples) can be visualized by comparing the homologue patterns of litter, Ah1 and Ah2 (Fig. 3d, e, f). This degradation effect is not documented in a significant change of the ACL, only the con sites show a slight, but not significant increasing trend with ongoing soil depth (Fig. 5a, Table S12). The degradation effect of a certain homologue on the CDG indices is illustrated in Fig. 6 and 7. Index D, for example, is high for ~~our~~the dec litter samples, but significantly decreases from litter to Ah1 and Ah2 (Table S14). The same applies for Index C

and G with regard to the con and grass samples, respectively, although the changes are not significant. With the preferential loss of the most abundant compound (n -C₂₈ for dec and n -C₂₄ for con) the respective characteristic index decreases, but unavoidably the other two indices increase. This is illustrated by the clusters moving closer together (Fig. 7b-c, d). Nevertheless, they still allow to discriminate between the three vegetation types as at least Index D and G show significant differences between all three vegetation types in all horizons (Table S14, S15). All three indices show a significant decrease (Index D) or increase (Index C and Index G) with soil depth in ~~our~~the dec samples which implies that they are more prone to degradation under the more alkaline deciduous forest soils. The grass samples do not show changes in ACL or in the indices from Ah1 to Ah2, which we again refer to plowing.

The significant decrease in EOP from litter to Ah1 and Ah2 in ~~our~~the dec samples (dec litter: 4.3; Ah1: 3.46; Ah2: 2.85; Fig. 5b) resembles the decrease of the OEP for the n -alkanes and suggests that the most abundant (even-numbered) compounds are preferentially degraded during pedogenesis. The decrease in EOP in the con samples is not significant, which we again refer to a better preservation of n -alkanoic acids in the acidic soils under conifers. Nevertheless, Figure 5b indicates a decreasing trend in the EOP in ~~our~~the con samples from L to Ah2, probably due to slight degradation effects on the acids in the con Ah1 and Ah2 samples. Grass samples do not show a trend in EOP, which is most likely because of the plowing that affected these sites. Like the OEP, the EOP might thus serve as proxy for degradation.

Although our results demonstrate that the leaf wax derived n -alkanoic acids in soils under coniferous forests are less prone to degradation compared to soils under deciduous forests, the risk still exists, that the leaf wax contribution from coniferous trees to soil and sedimentary archives might be underestimated, when the alkanic acid pattern is not corrected for degradation. The same applies for the deciduous forests and probably also for the grass sites.

Overall, our results show that

- (i) n -alkanoic acid patterns are significantly different between the investigated dec, con and grass sites,
- (ii) the specific CDG indices might be valuable proxies for paleovegetation, and
- (iii) degradation affects the homologue patterns and CDG indices, at least in ~~our~~the dec samples, so that procedures to correct for degradation need to be developed and tested.

5 Conclusions

We have systematically investigated leaf wax derived long chain n -alkane and n -alkanoic acid patterns in litter and top soils along a European transect. We found out that:

1. Both compound classes show distinct differences depending on the type of vegetation. The vegetation signal is not only found in the litter, but can also be preserved to some degree in the topsoil. ~~Our~~The grass sites contain more n -C₃₁ and n -C₃₃ alkanes than ~~our~~the dec sites, but less n -C₂₇. The ratio $(n\text{-}C_{31}+n\text{-}C_{33})/(n\text{-}C_{27}+n\text{-}C_{31}+n\text{-}C_{33})$ seems to be most suitable to distinguish between those two vegetation types in our study area. Litter and soil samples in coniferous forests are probably biased by the understory, so vegetation reconstructions solely based on the n -alkane pattern are blind for coniferous trees. Nevertheless, the n -alkanes show a great potential for paleovegetation reconstruction along our transect, but the species-specific absolute and relative variability of the homologue abundances need to be taken into account.

We propose three n -alkanoic acid indices to distinguish ~~and possibly quantify~~ contributions from the three investigated vegetation types: Index C is the relative abundance of the C₂₄ n -alkanoic acid and represents the input of coniferous trees. Index D is the relative abundance of the C₂₈ n -alkanoic acid and is particularly high in litter and in topsoil of deciduous forests. The relative abundance of the C₃₂ and C₃₄ n -alkanoic acids is expressed as Index G and ~~quantifies-shows~~ the contribution from grasses and herbs.

2. The homologue patterns of leaf waxes change from litter to Ah1 and Ah2. Although we cannot completely rule out effects related to possible land use and vegetation change in the past, the overall consistent trends imply that degradation plays an

important role. Degradation cannot only lower the OEP and EOP of *n*-alkanes and *n*-alkanoic acids, respectively, it also reduces the vegetation specific differences of the homologue patterns. An updated endmember model is suggested to account for degradation effects on *n*-alkanes, but similar procedures yet need to be developed and tested for the *n*-alkanoic acids before their potential for paleovegetation reconstructions can be fully exploited.

- 5 Overall, our findings suggest that combined investigations of *n*-alkane and *n*-alkanoic acid distributions on a regional scale have great potential for paleovegetation reconstruction, although degradation effects need to be taken into account. Particularly, with regard to the *n*-alkanoic acids, more research is needed to a better understanding of those effects.

Acknowledgements. We thank P. Neitzel, who contributed in large part to the work in the field and in the laboratory at ETH Zurich, and Q. Lejeune for support in the field, as well as C. Magill for scientific discussions. C. Diebold helped with the
10 laboratory work at the University of Bern. We also acknowledge L. Wüthrich and M. Bliedtner for helpful discussions. The research was funded by the Swiss National Science Foundation (PP00P2 150590).

References

- Almendros, G., Sanz, J. and Velasco, F.: Signatures of lipid assemblages in soils under continental Mediterranean forests, *European Journal of Soil Science* 47, 183-196, doi: 10.1111/j.1365-2389.1996.tb01389.x, 1996.
- 15 Amelung, W., Brodowski, S., Sandhage-Hofmann, A., and Bol, R.: Combining biomarker with stable isotope analyses for assessing the transformation and turnover of soil organic matter, in: *Advances in Agronomy*, edited by: Sparks, D. L., Elsevier Inc Academic Press, Burlington, 155–250, doi:10.1016/S0065-2113(08)00606-8, 2008.
- Brincat, D., Yamada, K., Ishiwatari, R., Uemura, H. and Naraoka, H.: Molecular-isotopic stratigraphy of long-chain *n*-alkanes in Lake Baikal Holocene and glacial age sediments, *Organic Geochemistry* 31, 287-294, doi: 10.1016/S0146-6380(99)00164-
20 3, 2000.
- Buggle, B., Wiesenberg, G.L. and Glaser, B.: Is there a possibility to correct fossil *n*-alkane data for postsedimentary alteration effects? *Applied Geochemistry* 25, 947-957, doi: 10.1016/j.apgeochem.2010.04.003, 2010.
- Bull, I.D., Bergen, P.F.v., Nott, C.J., Poulton, P.R. and Evershed, R.P.: Organic geochemical studies of soils from the Rothamsted classical experiments—V. The fate of lipids in different long-term experiments, *Organic Geochemistry* 31, 389-
25 408, doi: 10.1016/S0146-6380(00)00008-5, 2000a.
- Bull, I.D., Nott, C.J., van Bergen, P.F., Poulton, P.R. and Evershed, R.P., 2000: Organic geochemical studies of soils from the Rothamsted classical experiments — VI. The occurrence and source of organic acids in an experimental grassland soil, *Soil Biology and Biochemistry* 32, 1367-1376, doi: 10.1016/S0038-0717(00)00054-7. 2000b.
- Bush, R.T. and McInerney, F.A.: Leaf wax *n*-alkane distributions in and across modern plants: Implications for paleoecology and chemotaxonomy, *Geochimica et Cosmochimica Acta* 117, 161-179, doi: 10.1016/j.gca.2013.04.016, 2013.
- 30 Bush, R.T. and McInerney, F.A.: Influence of temperature and C4 abundance on *n*-alkane chain length distributions across the central USA, *Organic Geochemistry* 79, 65-73, doi: 10.1016/j.gca.2013.04.016, 2015.
- Collister, J.W., Rieley, G., Stern, B., Eglinton, G. and Fry, B.: Compound-Specific Delta-C-13 Analyses of Leaf Lipids from Plants with Differing Carbon-Dioxide Metabolisms, *Organic Geochemistry* 21, 619-627, doi: 10.1016/0146-6380(94)90008-
35 6, 1994.
- Derenne, S. and Largeau C.: A review of some important families of refractory macromolecules: composition, origin and fate in soils and sediments, *Soil Science*, 166, 833–847, 2001.
- Diefendorf, A.F., Freeman, K.H., Wing, S.L. and Graham, H.V.: Production of *n*-alkyl lipids in living plants and implications for the geologic past, *Geochimica et Cosmochimica Acta* 75, 7472-7485, doi: 10.1016/j.gca.2011.09.028, 2011.

- Duan, Y. and He, J.: Distribution and isotopic composition of n-alkanes from grass, reed and tree leaves along a latitudinal gradient in China, *Geochemical Journal* 45, 199-207, doi: 10.2343/geochemj.1.0115, 2011.
- [Eglinton, G., Hamilton, R.J., Raphael, R.A., Gonzalez, A.G.: Hydrocarbon Constituents of the Wax Coatings of Plant Leaves: A Taxonomic Survey, *Nature*, 193, 739-742, doi:10.1038/193739a0, 1962.](#)
- 5 Eglinton, G. and Hamilton, R.J.: Leaf epicuticular waxes, *Science* 156, 1322-1335, doi: 10.1126/science.156.3780.1322, 1967.
- Eglinton, T.I. and Eglinton, G.: Molecular proxies for paleoclimatology, *Earth and Planetary Science Letters* 275, 1-16, doi: 10.1016/j.epsl.2008.07.012, 2008.
- Feakins, S.J., Kirby, M.E., Cheetham, M.I., Ibarra, Y. and Zimmerman, S.R.H.: Fluctuation in leaf wax D/H ratio from a southern California lake records significant variability in isotopes in precipitation during the late Holocene, *Organic*
- 10 *Geochemistry* 66, 48-59, doi: 10.1016/j.orggeochem.2013.10.015, 2014.
- Field, A. P.: *Discovering statistics using IBM SPSS Statistics: and sex and drugs and rock 'n' roll* (fourth edition). London: Sage publications, 2013
- Freeman, K.H. and Colarusso, L.A.: Molecular and isotopic records of C4 grassland expansion in the late Miocene, *Geochimica et Cosmochimica Acta* 65, 1439-1454, doi: 10.1016/S0016-7037(00)00573-1, 2001.
- 15 Games, P. A. and Howell, J. F.: Pairwise Pairwise Multiple Multiple Comparison Comparison Procedures Procedures with Unequal Unequal N's and/or Variances: A Monte Carlo Study *Journal of Educational Statistics Educational Statistics*, 1, 113-125, 1976.
- Gocke, M., Kuzyakov, Y. and Wiesenberg, G.B.: Differentiation of plant derived organic matter in soil, loess and rhizoliths based on n-alkane molecular proxies, *Biogeochemistry* 112, 23-40, doi: 10.1007/s10533-011-9659-y, 2013.
- 20 Guo, N., Gao, J., He, Y., Zhang, Z. and Guo, Y.: Variations in leaf epicuticular n-alkanes in some *Broussonetia*, *Ficus* and *Humulus* species, *Biochemical Systematics and Ecology* 54, 150-156, doi: 10.1016/j.bse.2014.02.005, 2014.
- Hochberg, Y.: A sharper Bonferroni procedure for multiple tests of significance. *Biometrika* 75, 800-803, 1988.
- Hoefs, M.J.L., Rijpstra, W.I.C. and Sinninghe Damsté, J.S.: The influence of oxic degradation on the sedimentary biomarker record I: evidence from Madeira Abyssal plain turbidites, *Geochim. Cosmochim. Acta* 66, 2719-2735, doi: 10.5194/bg-11-
- 25 2455-2014, 2002.
- Hoffmann, B., Kahmen, A., Cernusak, L.A., Arndt, S.K. and Sachse, D.: Abundance and distribution of leaf wax n-alkanes in leaves of *Acacia* and *Eucalyptus* trees along a strong humidity gradient in northern Australia, *Organic Geochemistry* 62, 62-67, doi: 10.1016/j.orggeochem.2013.07.003, 2013.
- Huang, Y., Bol, R., Harkness, D.D., Ineson, P. and Eglinton, G.: Post-glacial variations in distributions, ¹³C and ¹⁴C contents
- 30 of aliphatic hydrocarbons and bulk organic matter in three types of British acid upland soils, *Organic Geochemistry* 24, 273-287, doi: 10.1016/0146-6380(96)00039-3, 1996.
- Jandl, G., Schulten, H.-R. and Leinweber, P.: Quantification of long-chain fatty acids in dissolved organic matter and soils, *Journal of Plant Nutrition and Soil Science* 165, 133-139, doi: 10.1002/1522-2624(200204)165:2<133::AID-JPLN133>3.0.CO;2-T, 2002.
- 35 Jansen, B., Nierop, K.G.J., Hageman, J.A., Cleef, A.M. and Verstraten, J.M.: The straight-chain lipid biomarker composition of plant species responsible for the dominant biomass production along two altitudinal transects in the Ecuadorian Andes, *Organic Geochemistry* 37, 1514-1536, doi: 10.1016/j.orggeochem.2006.06.018, 2006.
- Killops, S. and Killops, V.: *Chemical Stratigraphic Concepts and Tools, Introduction to Organic Geochemistry*, second ed. Blackwell Publishing Ltd., pp. 166-245, 2005 ([online: http://eaog.org/](http://eaog.org/)).
- 40 Kirkels, F.M., Jansen, B. and Kalbitz, K.: Consistency of plant-specific n-alkane patterns in plaggen ecosystems: A review, *The Holocene* 23, 1355-1368, doi: 10.1177/0959683613486943, 2013b.

- Lei, G., Zhang, H., Chang, F., Pu, Y., Zhu, Y., Yang, M. and Zhang, W.: Biomarkers of modern plants and soils from Xinglong Mountain in the transitional area between the Tibetan and Loess Plateaus, *Quaternary International* 218, 143-150, doi: 10.1016/j.quaint.2009.12.009, 2010.
- Levene, H.: Robust tests for equality of variances. In Ingram Olkin, Harold Hotelling, et alia. *Contributions to Probability and Statistics: Essays in Honor of Harold Hotelling*. Stanford University Press, 278–292, 1960.
- 5 Liebezeit, G. and Wöstmann, R.: n-Alkanes as Indicators of Natural and Anthropogenic Organic Matter Sources in the Siak River and its Estuary, E Sumatra, Indonesia, *Bull Environ Contam Toxicol* 83, 403-409, doi: 10.1007/s00128-009-9734-4, 2009.
- Maffei, M.: Chemotaxonomic significance of leaf wax alkanes in the gramineae, *Biochemical Systematics and Ecology* 24, 53-64, doi:10.1016/0305-1978(95)00102-6, 1996
- 10 Maffei, M., Badino, S. and Bossi, S.: Chemotaxonomic significance of leaf wax n-alkanes in the Pinales (Coniferales), *Journal of Biological Research* 1, 3-19, 2004.
- Marseille, F., Disnar, J.R., Guillet, B. and Noack, Y.: n-Alkanes and free fatty acids in humus and A1 horizons of soils under beech, spruce and grass in the Massif-Central (Mont-Lozère), France, *European Journal of Soil Science* 50, 433-441, doi: 10.1046/j.1365-2389.1999.00243.x, 1999.
- 15 Norris, C. E., Dungait, J.A.J., Joynes, A. and Quideau, S.A.: Biomarkers of novel ecosystem development in boreal forest soils, *Organic Geochemistry*, 64, 9-18, doi:10.1016/j.orggeochem.2013.08.014, 2013
- Nguyen Tu, T.T., Egasse, C., Zeller, B., Bardoux, G., Biron, P., Ponge, J.-F., David, B. and Derenne, S.: Early degradation of plant alkanes in soils: A litterbag experiment using ¹³C-labelled leaves, *Soil Biology and Biochemistry* 43, 2222-2228, doi: 10.1016/j.soilbio.2011.07.009, 2011.
- 20 Otto, A. and Simpson, M.: Degradation and Preservation of Vascular Plant-derived Biomarkers in Grassland and Forest Soils from Western Canada. *Biogeochemistry* 74, 377-409, doi: 10.1007/s10533-004-5834-8, 2005.
- Poynter, J.G., Farrimond, P., Robinson, N. and Eglinton, G.: Aeolian-Derived Higher Plant Lipids in the Marine Sedimentary Record: Links with Palaeoclimate, in: Leinen, M., Sarnthein, M. (Eds.), *Paleoclimatology and Paleometeorology: Modern and Past Patterns of Global Atmospheric Transport*. Springer Netherlands, pp. 435-462, 1989.
- 25 Rieley, G., Collier, R.J., Jones, D.M., Eglinton, G., Eakin, P.A. and Fallick, A.E.: Sources of Sedimentary Lipids Deduced from Stable Carbon Isotope Analyses of Individual Compounds, *Nature* 352, 425-427, doi: 10.1038/352425a0, 1991.
- Rommerskirchen, F., Plader, A., Eglinton, G., Chikaraishi, Y. and Rullkötter, J.: Chemotaxonomic significance of distribution and stable carbon isotopic composition of long-chain alkanes and alkan-1-ols in C₄ grass waxes, *Organic Geochemistry* 37, 1303-1332, doi: 10.1016/j.orggeochem.2005.12.013, 2006.
- 30 Sachse, D., Radke, J. and Gleixner, G.: δD values of individual n-alkanes from terrestrial plants along a climatic gradient – Implications for the sedimentary biomarker record, *Organic Geochemistry* 37, 469-483, doi: 10.1016/j.orggeochem.2005.12.003, 2006.
- Schatz, A.-K., Zech, M., Buggle, B., Gulyás, S., Hambach, U., Marković, S.B., Sümegi, P. and Scholten, T.: The late Quaternary loess record of Tokaj, Hungary: Reconstructing palaeoenvironment, vegetation and climate using stable C and N isotopes and biomarkers. *Quaternary International* 240, 52-61, doi: 10.1016/j.quaint.2010.10.009, 2011.
- 35 Schefuß, E., Ratmeyer, V., Stuut, J.-B.W., Jansen, J.H.F. and Sinninghe Damsté, J.S.: Carbon isotope analyses of n-alkanes in dust from the lower atmosphere over the central eastern Atlantic. *Geochimica et Cosmochimica Acta* 67, 1757-1767, doi 10.1016/S0016-7037(02)01414-X, 2003.
- 40 Schwark, L., Zink, K. and Lechterbeck, J.: Reconstruction of postglacial to early Holocene vegetation history in terrestrial Central Europe via cuticular lipid biomarkers and pollen records from lake sediments. *Geology* 30, 463-466, doi 10.1130/0091-7613(2002)030<0463:ropteh>2.0.co;2, 2002.

- Shapiro, S. S. and Wilk, M. B.: An analysis of variance test for normality (complete samples), *Biometrika*. 52, 591–611, doi:10.1093/biomet/52.3-4.591 1965.
- Shepherd, T. and Wynne Griffiths, D.: The effects of stress on plant cuticular waxes. *New Phytologist* 171, 469-499, doi: 10.1111/j.1469-8137.2006.01826.x, 2006.
- 5 Tarasov, P.E., Müller, S., Zech, M., Andreeva, D., Diekmann, B. and Leipe, C.: Last glacial vegetation reconstructions in the extreme-continental eastern Asia: Potentials of pollen and n-alkane biomarker analyses. *Quaternary International* 290–291, 253-263, doi: 10.1016/j.quaint.2012.04.007, 2013.
- Tipple, B.J., and Pagani, M.: A 35 Myr North American leaf-wax compound-specific carbon and hydrogen isotope record: Implications for C4 grasslands and hydrologic cycle dynamics. *Earth and Planetary Science Letters* 299, 250-262, doi: 10.1016/j.epsl.2010.09.006, 2010.
- 10 Tipple, B.J and Pagani, M.: Environmental control on eastern broadleaf forest species' leaf wax distributions and D/H ratios. *Geochimica et Cosmochimica Acta* 111, 64-77, doi: 10.1016/j.gca.2012.10.042, 2013.
- Tukey, J.: Comparing Individual Means in the Analysis of Variance, *Biometrics* 5, 99–114, 1949.
- Vogts, A., Schefuß, E., Badewien, T. and Rullkötter, J.: n-Alkane parameters from a deep sea sediment transect off southwest Africa reflect continental vegetation and climate conditions. *Organic Geochemistry* 47, 109-119, doi 10.1016/j.orggeochem.2012.03.011, 2012.
- 15 Vysloužilová, B. Ertlen, D.; Šefrna, L., Novak, T., Viragh, K., Rué, M., Campaner, A., Dreslerová, D. & Schwartz, D.: Investigation of vegetation history of buried chernozem soils using near-infrared spectroscopy (NIRS). *Quaternary International* 365, 203-211, doi: 10.1016/j.quaint.2014.07.035, 2015.
- 20 Wang, N., Zong, Y., Brodie, C.R. and Zheng, Z.: An examination of the fidelity of n-alkanes as a palaeoclimate proxy from sediments of Palaeolake Tianyang, South China. *Quaternary International* 333, 100-109, doi: 10.1016/j.quaint.2014.01.044, 2014.
- Wiesenberg, G.L.B., Schwarzbauer, J., Schmidt, M.W.I., and Schwark, L.: Source and turnover of organic matter in agricultural soils derived from n-alkane/n-carboxylic acid compositions and C-isotope signatures, *Org. Geochem.*, 35, 1371–1393, 2004.
- 25 Wiesenberg, G.L.B., Andreeva, D.B., Chimitdorgieva, G.D., Erbajeva, M.A. and Zech, W.: Reconstruction of environmental changes during the late glacial and Holocene reflected in a soil-sedimentary sequence from the lower Selenga River valley, Lake Baikal region, Siberia, assessed by lipid molecular proxies, *Quaternary International* 365, 190-202, 2015.
- Wöstmann, R., 2006. Biomarker in torfbildenden Pflanzen und ihren Ablagerungen im nordwestdeutschen Küstenraum als Indikatoren nacheiszeitlicher Vegetationsänderungen, Fakultät für Mathematik und Naturwissenschaft. Carl von Ossietzky Universität, Oldenburg, p. 233.
- 30 Zech, M., Buggle, B., Leiber, K., Markovic, S., Glaser, B., Hambach, U., Huwe, B., Stevens, T., Sümege, P., Wiesenberg, G. and Zöller, L.: Reconstructing Quaternary vegetation history in the Carpathian Basin, SE Europe, using n-alkane biomarkers as molecular fossils – Problems and possible solutions, potential and limitations. *Quaternary Science Journal* 58, 148-155, 2009.
- 35 Zech, M., Andreev, A., Zech, R., Müller, S., Hambach, U., Frechen, M. and Zech, W.: Quaternary vegetation changes derived from a loess-like permafrost palaeosol sequence in northeast Siberia using alkane biomarker and pollen analyses. *Boreas* 39, 540-550, doi: 10.1111/j.1502-3885.2009.00132.x, 2010.
- Zech, M., Zech, R., Buggle, B. and Zöller, L.: Novel methodological approaches in loess research—interrogating biomarkers and compound-specific stable isotopes. *Eiszeitalter & Gegenwart-Quatern Sci J* 60, 170-187, 2011a.
- 40 Zech, M., Pedentchouk, N., Buggle, B., Leiber, K., Kalbitz, K., Markovic, S., Glaser, B.: Effect of leaf-litter decomposition and seasonality on D/H isotope ratios of n-alkane biomarkers. *Geochimica et Cosmochimica Acta* 75, 4917–4928, 2011b.

Zech, M., Krause, T., Meszner, S. and Faust, D.: Incorrect when uncorrected: Reconstructing vegetation history using n-alkane biomarkers in loess-paleosol sequences – A case study from the Saxonian loess region, Germany. *Quaternary International* 296, 108-116, doi 10.1016/j.quaint.2012.01.023, 2013a.

~~Zech, M., Zech, R., Bugge, B. and Zöller, L.: Novel methodological approaches in loess research – interrogating biomarkers and compound specific stable isotopes. *Eiszeitalter & Gegenwart Quatern Sci J* 60, 170-187, 2011a.~~

5

~~Zech, M., Pedentchouk, N., Bugge, B., Leiber, K., Kalbitz, K., Markovic, S., Glaser, B.: Effect of leaf litter decomposition and seasonality on D/H isotope ratios of n-alkane biomarkers. *Geochimica et Cosmochimica Acta* 75, 4917-4928, 2011b.~~

Zech, R., Zech, M., Marković, S., Hambach, U. and Huang, Y.: Humid glaciials, arid interglaciials? Critical thoughts on pedogenesis and paleoclimate based on multi-proxy analyses of the loess-paleosol sequence Crvenka, Northern Serbia.

10

Palaeogeography, Palaeoclimatology, Palaeoecology 387, 165-175, doi: 10.1016/j.palaeo.2013.07.023, 2013b.

Zhang, Z., Zhao, M., Eglinton, G., Lu, H. and Huang, C.-Y.: Leaf wax lipids as paleovegetational and paleoenvironmental proxies for the Chinese Loess Plateau over the last 170 kyr. *Quaternary Science Reviews* 25, 575-594 doi: 10.1016/j.quascirev.2005.03.009, 2006.

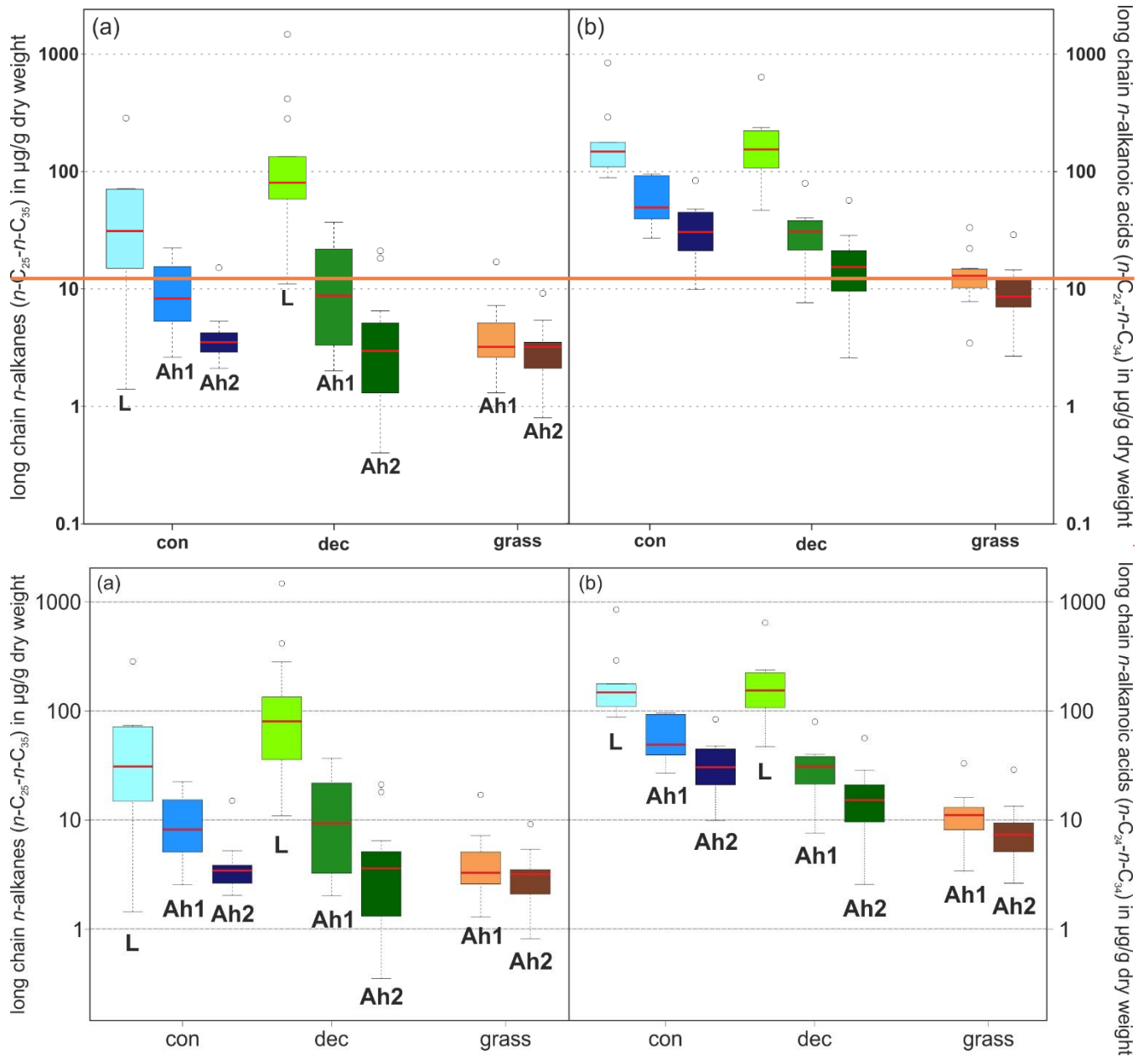
Zocatelli, R., Lavrieux, M., Disnar, J.-R., Le Milbeau, C., Jacob, J. and Bréheret, J.: Free fatty acids in Lake Aydat catchment

15

soils (French Massif Central): sources, distributions and potential use as sediment biomarkers. *J Soils Sediments* 12, 734-748, doi: 10.1007/s11368-012-0505-1, 2012.



Figure 1: Sample locations (black dots) along the transect (map source: US National Park Service; Esri, HERE, DeLorme, MapmyIndia, OpenStreetMap contributors and the GIS user community).



5 **Figure 2: Total concentrations of (a) *n*-alkanes and (b) *n*-alkanoic acids in $\mu\text{g/g}$ dry weight; con: coniferous forest sites (n=9); dec: deciduous forest sites (n=14); grass: grassland sites (n=22); L=litter; Ah1=topsoil 1 (0-3 cm); Ah2=topsoil 2 (3-10 cm). Box plots show median (red line), interquartile range (IQR) with upper (75%) and lower (25%) quartiles, lowest datum still within 1.5 x IQR of lower quartile, highest datum still within 1.5 x IQR of upper quartile. Note that the y-axis is logarithmic.**

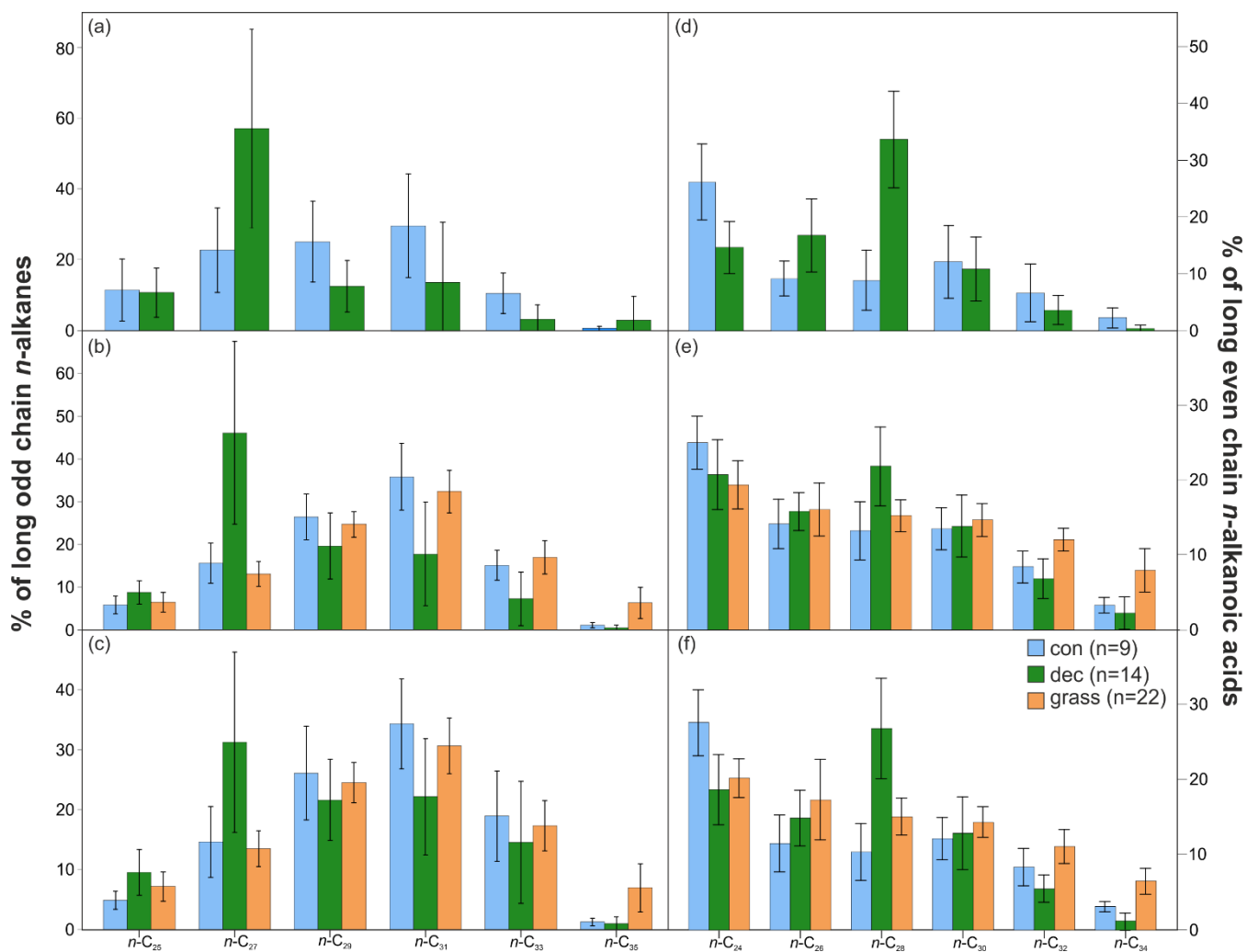


Figure 3: Chain length patterns for odd long chain *n*-alkanes in (a) litter, (b) Ah1 and (c) Ah2, and long and even chain *n*-alkanoic acids in (d) litter, (e) Ah1, (f) Ah2.

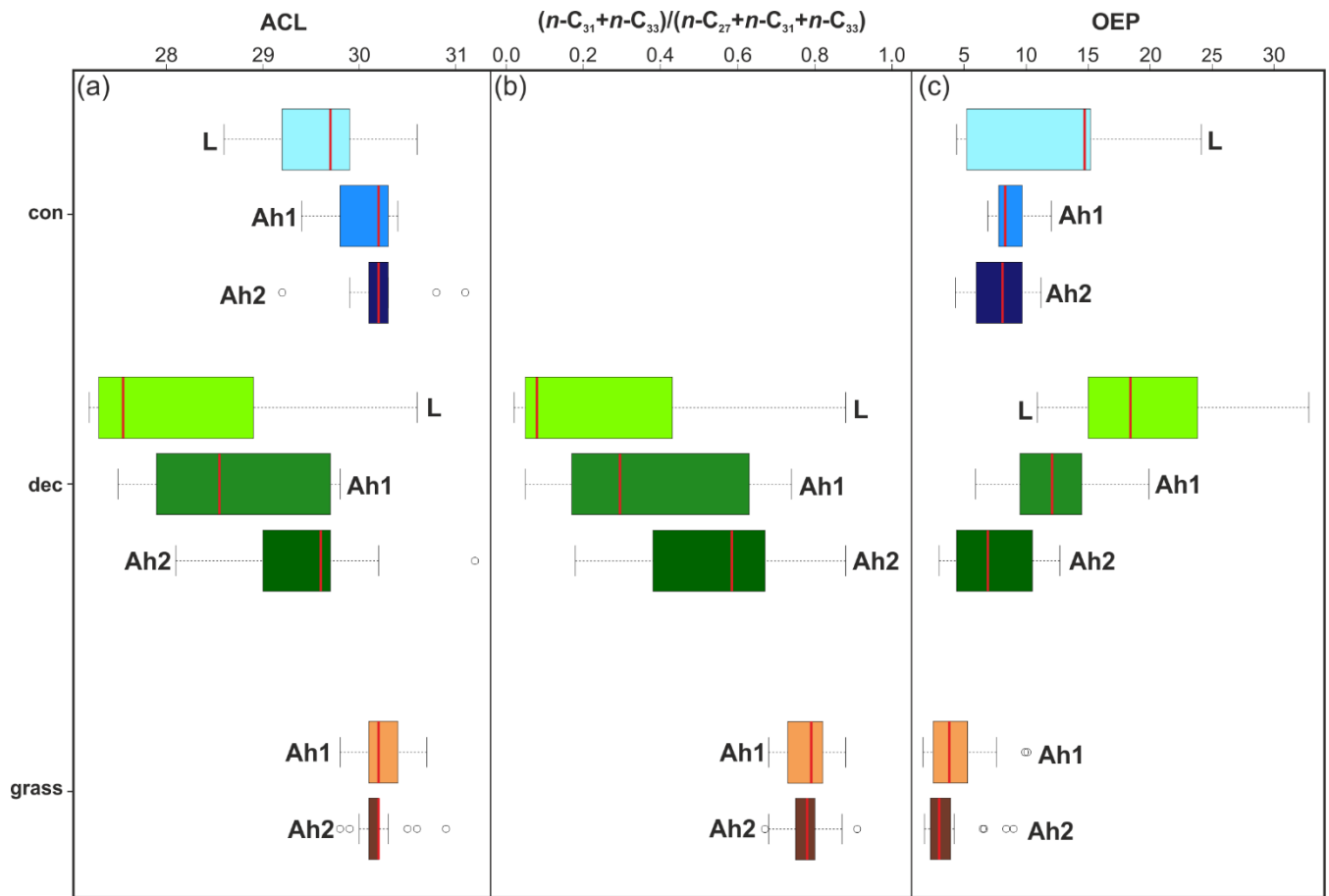


Figure 4: Box plots (a) *n*-alkane ACL, (b) ratio $(n-C_{31}+n-C_{33})/(n-C_{27}+n-C_{31}+n-C_{33})$, and (c) OEP. Con: coniferous forest sites (n=9); dec: deciduous forest sites (n=14); grass: grassland sites (n=22); L=litter; Ah1=topsoil 1 (0-3 cm); Ah2=topsoil 2 (3-10 cm). Box plots show median (red line), interquartile range (IQR) with upper (75%) and lower (25%) quartiles, lowest datum still within 1.5 x IQR of lower quartile, highest datum still within 1.5 x IQR of upper quartile.

5

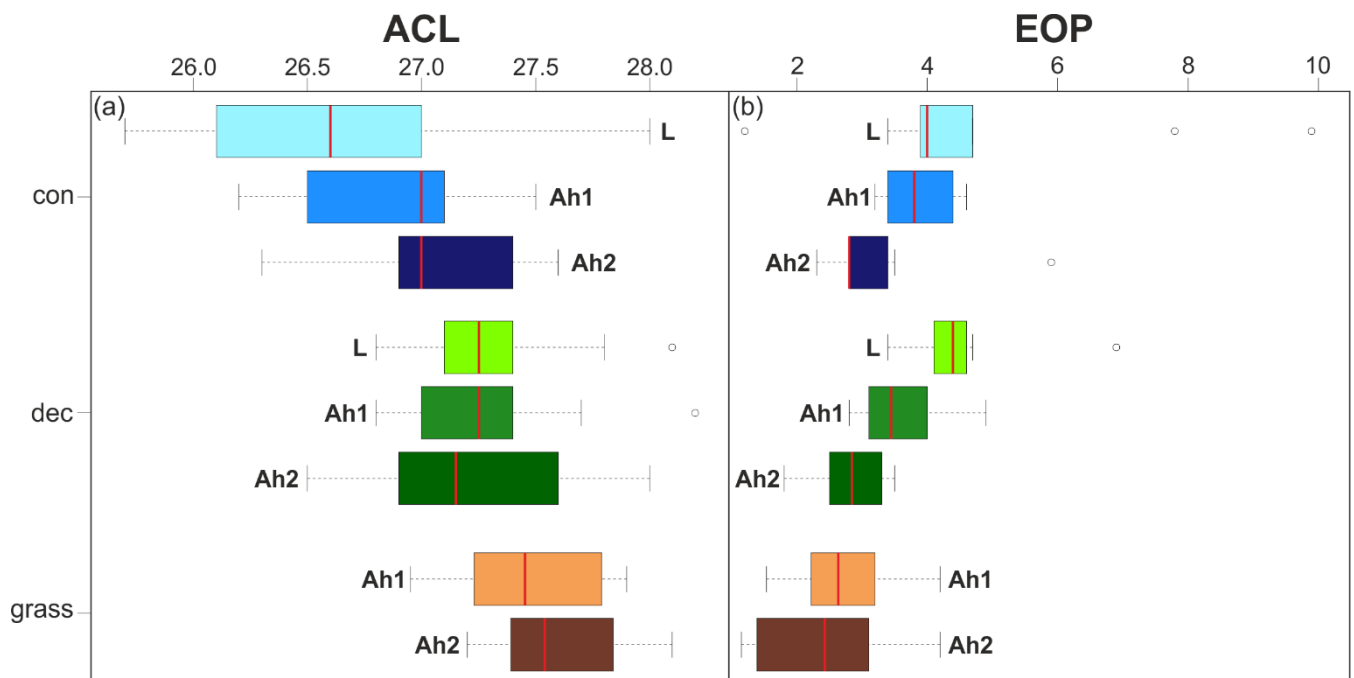


Figure 5: Box plots for (a) *n*-alkanoic acid ACL and (b) EOP. Con: coniferous forest sites (n=9); dec: deciduous forest sites (n=14); grass: grassland sites (n=14); L=litter; Ah1=topsoil 1 (0-3 cm); Ah2=topsoil 2 (3-10 cm). Box plots show median (red line), interquartile range (IQR) with upper (75%) and lower (25%) quartiles, lowest datum still within 1.5 x IQR of lower quartile, highest datum still within 1.5 x IQR of upper quartile.

10

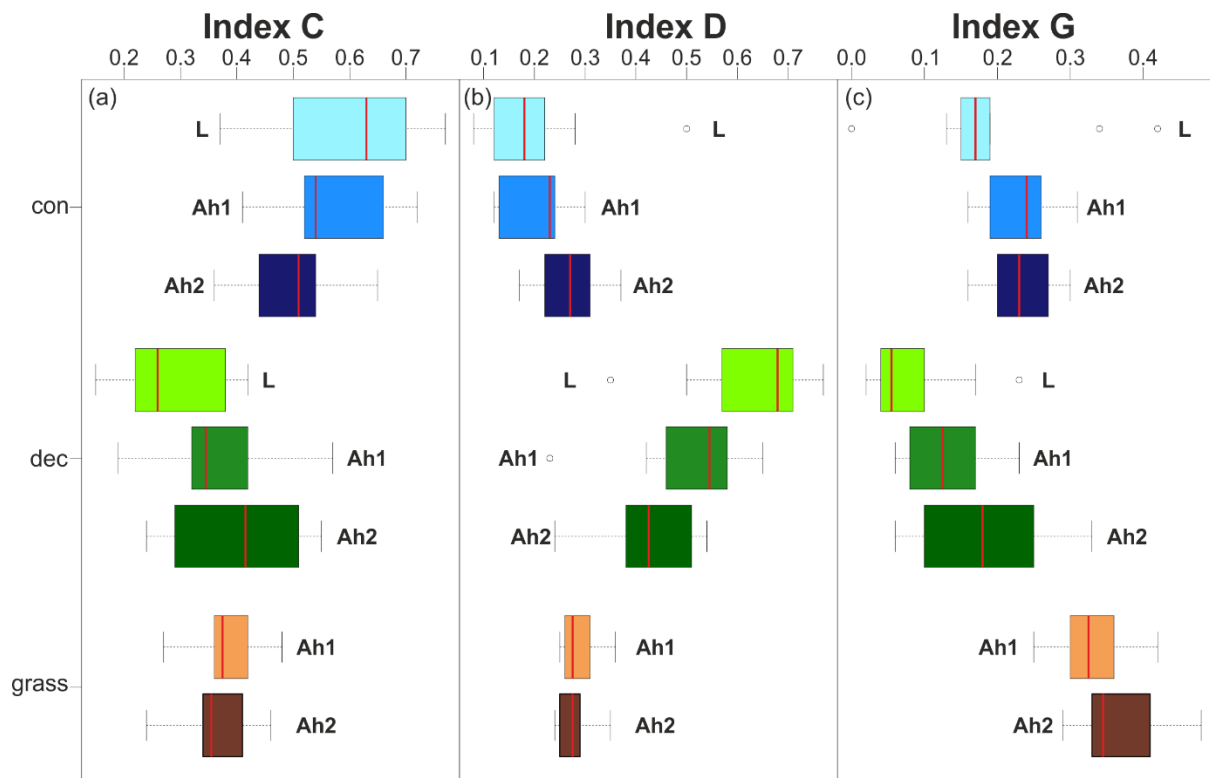
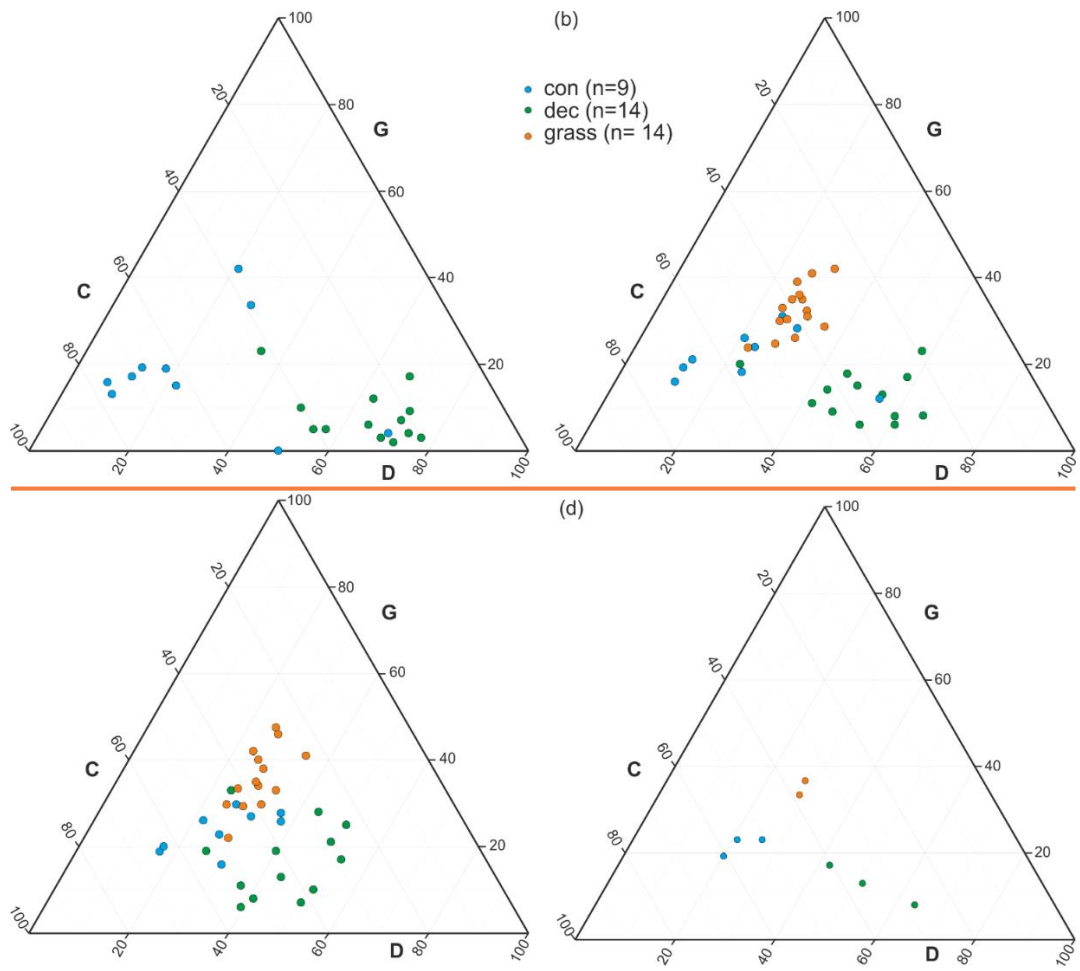


Figure 6: Box plots for (a) Indices C, (b) D and (c) G. Con: coniferous forest sites (n=9); dec: deciduous forest sites (n=14); grass: grassland sites (n=14); L=litter; Ah1=topsoil 1 (0-3 cm); Ah2=topsoil 2 (3-10 cm). Box plots show median (red line), interquartile range (IQR) with upper (75%) and lower (25%) quartiles, lowest datum still within 1.5 x IQR of lower quartile, highest datum still within 1.5 x IQR of upper quartile.

5



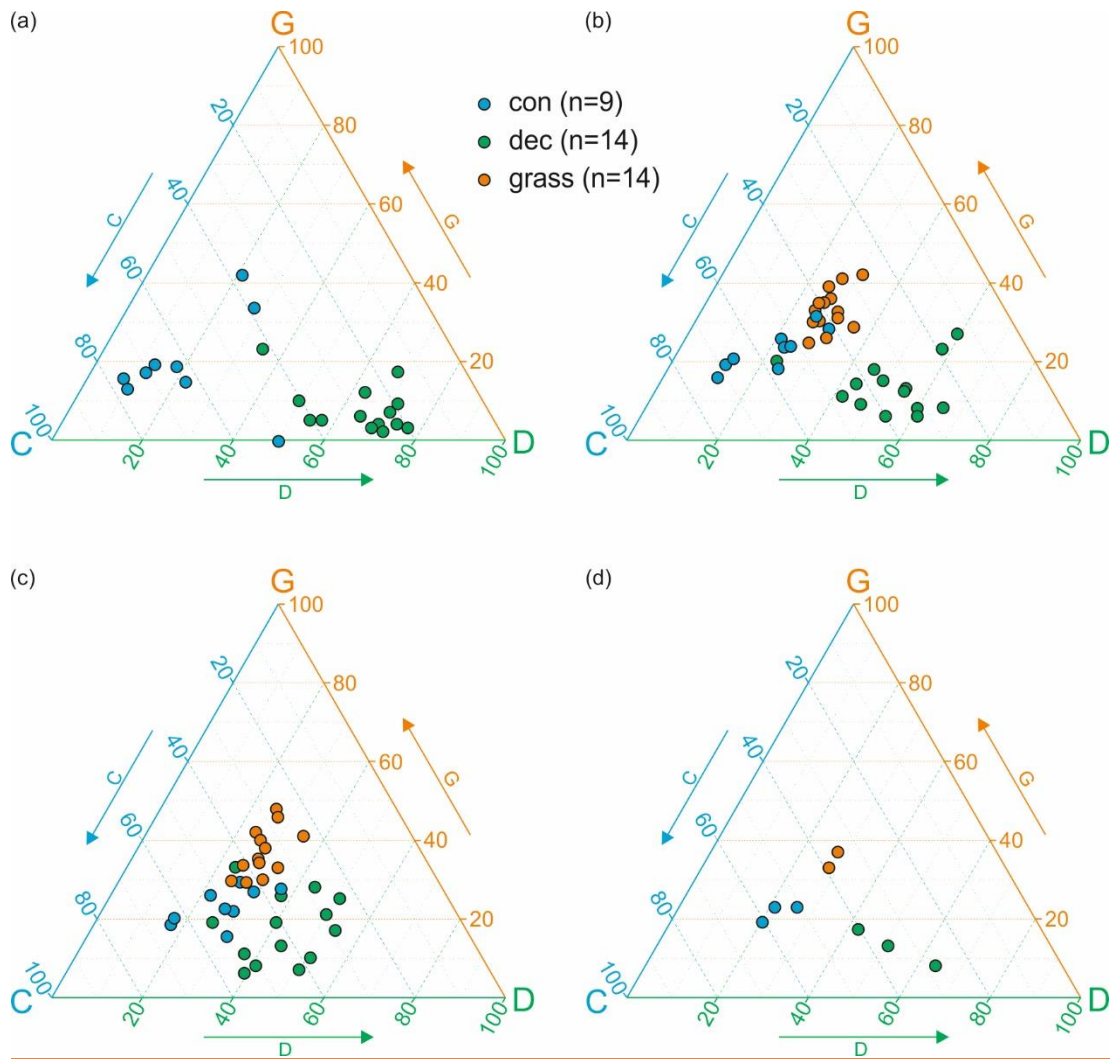
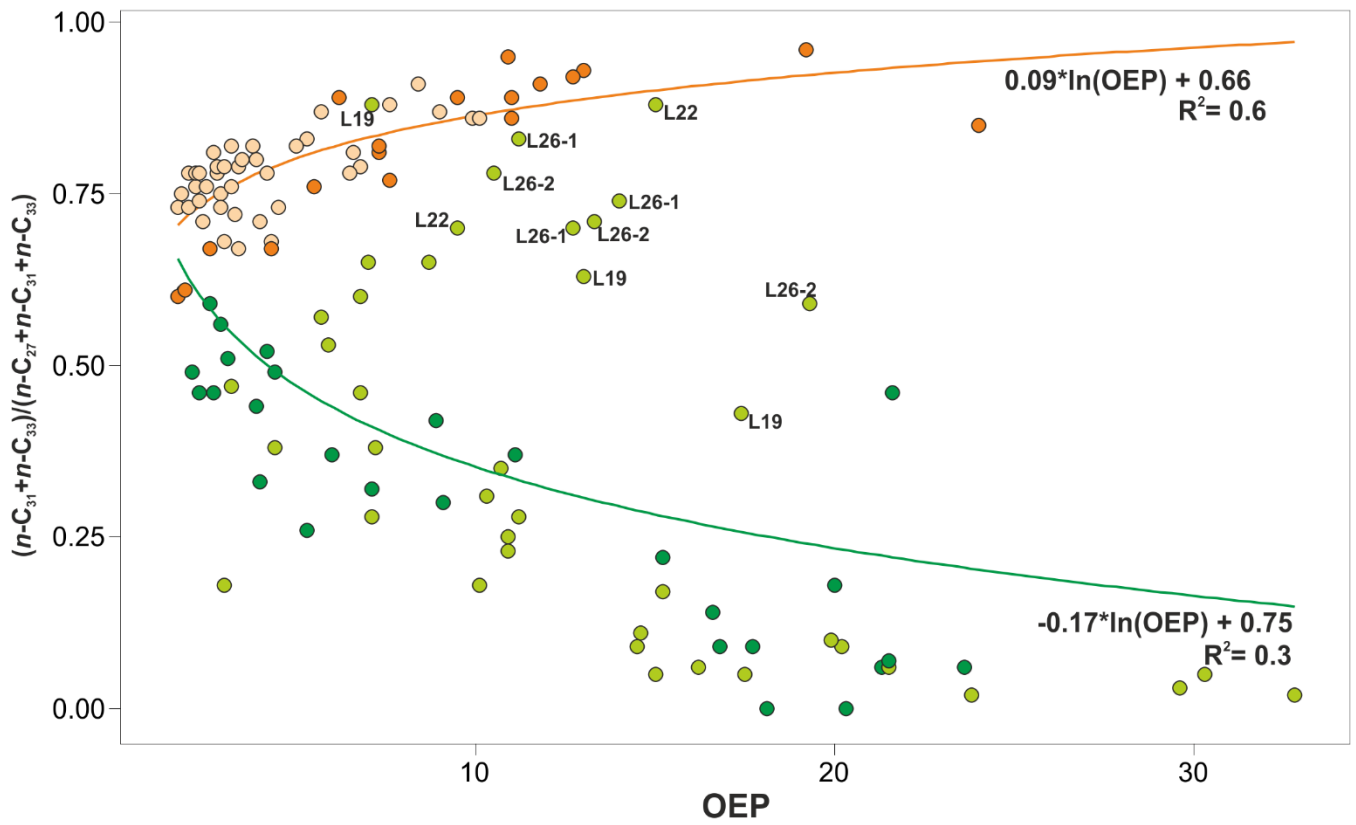


Figure 7: Ternary plots for the CDG indices: (a) litter, (b) Ah1 and (c) Ah2, and (d) medians-means for vegetation types, each point represents the mean of litter, Ah1 and Ah2, respectively of con, dec and grass.



- dec samples, this study
 - dec samples, Zech et al. (2013b)
- grass samples, this study
 - grass samples, Zech et al. (2013b)
- degradation line dec
 - degradation line grass

Figure 8: Endmember plot modified after Zech et al. (2013b). Degradation lines refer to the complete dataset. Samples that deviated markedly from the degradation lines are labelled and discussed in the text.