

Three dimensional soil organic matter distribution, accessibility and microbial respiration in macro-aggregates using osmium staining and synchrotron X-ray CT

Barry G Rawlins¹, Joanna Wragg¹, Christina Reinhard², Robert C Atwood², Alasdair Houston³, R. Murray Lark¹, and Sebastian Rudolph¹

¹British Geological Survey, Keyworth, Nottingham, NG12 5GG, UK

²Diamond Light Source, Harwell Science & Innovation Campus, Chilton, OX11 0DE

³SIMBIOS, Abertay University, 40 Bell Street, Dundee DD1 1HG, UK

Correspondence to: Barry G Rawlins (bgr@bgs.ac.uk)

Abstract. The spatial distribution and accessibility of organic matter (OM) to soil microbes in aggregates – determined by the fine-scale, 3-D distribution of OM, pores and mineral phases – may be an important control on the magnitude of soil heterotrophic respiration (SHR). Attempts to model SHR at fine scales requires data on the transition probabilities between adjacent pore space and soil OM, a measure of microbial accessibility to the latter. We used a combination of osmium staining and synchrotron X-ray CT to determine the 3-D (voxel) distribution of these three phases (scale 6.6 μm) throughout nine aggregates taken from a single soil core (range of organic carbon (OC) concentrations 4.2-7.7 %). Prior to the synchrotron analyses we had measured the magnitude of SHR for each aggregate over 24 hours under controlled conditions (moisture content and temperature). We test the hypothesis that larger magnitudes of SHR will be observed in aggregates with i) shorter length scales of OM variation (more aerobic microsites) and ii) larger transition probabilities between OM and pore voxels.

After scaling to their OC concentrations, there was a six-fold variation in the magnitude of SHR for the nine aggregates. The distribution of pore diameters and tortuosity index values for pore branches were similar for each of the nine aggregates. The Pearson correlation between aggregate surface area (normalised by aggregate volume) and normalised headspace C gas concentration was both positive and reasonably large ($r=0.44$), suggesting the the former may be a factor that influences SHR. The overall transition probabilities between OM and pore voxels were between 0.07 and 0.17, smaller than those used in previous simulation studies. We computed the length scales over which OM, pore and mineral phases vary within each aggregate using 3D indicator variograms. The median range of models fitted to variograms of OM varied between 38 and 175 μm and were generally larger than the other two phases within each aggregate, but in general variogram models had ranges $<250 \mu\text{m}$. There was no evidence to support the hypotheses concerning scales of variation in OM and magnitude of SHR; the linear correlation was 0.01. There was weak evidence to suggest a statistical relationship between voxel-based OM:pore transition probabilities and the magnitudes of aggregate SHR ($r=0.12$). We discuss how our analyses could be extended and suggest improvements to the approach we used.

1 Introduction

In soil heterotrophic respiration (SHR) microbes utilise the carbon in soil organic matter (SOM) as an energy source, releasing gaseous CO₂ which accumulates in the soil at significantly larger concentrations than in the atmosphere (Hirano et al., 2003). Ultimately this excess CO₂ is released to the global atmosphere. It is important we understand the processes that determine variations in the magnitude of SHR because it influences the flux of carbon dioxide (CO₂) from soils to the atmosphere, an important part of the global carbon cycle with major implications for global climate change (Cox et al., 2000). The turnover of SOM is also an important control on the cycling of other macronutrients, notably nitrogen.

It has been suggested that it is essential to understand the influence of microscale intra-aggregate heterogeneity of soil properties to ensure that organic matter (OM) mineralisation can be modelled effectively (Falconer et al., 2015). The majority of soil microbial communities reside in pore networks within soil aggregates which are three-dimensional (3-D) agglomerations of mineral particles, varying in size, that form a hierarchy (Tisdall and Oades, 1982) with small, micro-aggregates (<250 µm) forming larger, macro-aggregates (> 250 µm). Soil aggregates consist of complex mixtures of SOM, mineral particles, pore space, microbes and moisture. The accessibility of SOM to microbial communities (substrate availability) is determined by the distribution of pores (Chenu et al., 2001; Negassa et al., 2015) which also also determines water potential and the flux of oxygen. Soil matric potentials vary over short scales due to the varying size of pores, with microbes concentrated at the interfaces between air and water. Decomposition rates of SOM may therefore be influenced by moisture content (Moyano et al., 2012)), pore size and location within an aggregate (Killham et al., 1993), and also by temperature and substrate quality (Davidson and Janssens, 2006), and microbial properties (Li et al., 2015).

The majority of SOM utilised by soil microbes, the former both as large individual particles and more finely disseminated material associated with minerals, occurs both on the surfaces of, and within, soil aggregates (Leue et al., 2010). In controlled laboratory experiments, the magnitude of SHR has been shown to vary considerably between soil aggregates (Kravchenko et al., 2015). It has been suggested that the location of OM within soil aggregates may be a significant factor governing the magnitude of OM mineralisation in soil (Dungait et al., 2012). Microsites for aerobic SHR occur where SOM and pores are adjacent to one another in soil aggregates, but to date their frequency and spatial distribution have not been established within macro-aggregates. If a large proportion of intra-aggregate SOM is occluded by minerals so that microbes cannot utilise it, there will be fewer interfaces between SOM and pores and the magnitude of SHR for such aggregates may be smaller than those in which SOM is more accessible (a larger proportion of pore:SOM interfaces). In a recent study, Juarez et al. (2013) asserted that soil structure may be of limited importance in determining rates of SHR at the scale of the soil core. The authors created soils with differing structural properties (undisturbed versus disaggregated and sieved) and showed that after the structural perturbations had dissipated, there were no significant differences in SHR rates for both native and added soil carbon. However, the observed increase in rates of SHR following disturbance also implies that soil structure does exert an influence on rates of microbial SOM mineralisation.

Another feature of soil aggregates that may influence the magnitude of SHR is the size and distribution of its SOM including particulate organic matter (Kravchenko et al., 2015). Consider two aggregates, with the same concentration of SOM, removed

from a single soil core. In the first aggregate the SOM consists of small, finely disseminated material that occurs frequently over short length scales, whilst in the second there are fewer, larger particles of SOM with larger distances separating them. We hypothesise that in the former aggregate there will likely be a larger number of microsites leading to a greater magnitude of SHR compared to the latter. This hypothesis could be tested by determining the magnitude of SHR in such aggregates if it were also possible to subsequently determine the length scales over which the SOM is distributed in these aggregates. Although the statistical methods are well established for doing so, there are currently few laboratory methods for establishing the 3-D spatial variation of intra-aggregate OM distribution (see below).

To date, relatively few experimental approaches have been applied to determine: i) the accessibility of soil OM in macro-aggregates, and ii) whether the accessibility and of SOM in soil aggregates exerts a strong influence on microbial SHR at the macro-aggregate scale. This is in part because scientists have lacked methods for fine ($<10\ \mu\text{m}$) scale 3-D discrimination between minerals and SOM within aggregates. Approaches to date have generally been limited to mapping SOM in two dimensions (Lehmann et al., 2007), or in 3-D within smaller regions of aggregates (Yu et al., 2016). In a recent study, Hapca et al. (2015) used a combination of X-ray computed tomography (CT) and scanning electron microscope images to map soil chemical composition, including soil carbon, at a resolution of $15.8\ \mu\text{m}$ in a small block of soil (side length of 1 cm). An alternative approach was recently demonstrated by Peth et al. (2014) where differences in X-ray absorption above and below the osmium (Os) edge — using synchrotron beamline X-ray computed tomography (CT) — was used to discriminate between OM, and mineral phases in aggregates of around 2-3 mm diameter, at a resolution of $9.77\ \mu\text{m}$.

In this paper we report the results of applying and extending the Os-staining and synchrotron X-ray CT method developed by Peth et al. (2014). Specifically we establish the 3-D distribution of mineral, SOM and pore space throughout nine macro-aggregates from a single soil core at fine ($6.6\ \mu\text{m}$) length scales. To our knowledge such data have never been analysed geostatistically to determine the 3-D length scales over which SOM, minerals and pores vary both within and between aggregates. In so doing we establish the magnitude of any structural differences between the nine aggregates. Prior to the synchrotron X-ray CT analyses we measured the magnitude of SHR of each aggregate in the laboratory by measuring headspace CO_2 concentrations after incubating the aggregates in separate vials, having controlled for both temperature and moisture content. We have determined the accessibility of SOM within each aggregate by computing the transition probabilities between adjacent SOM and pore voxels, and also the diameter and tortuosities of the pore networks. We used the SOM-pore transition probabilities as an index of SOM accessibility to determine whether it is strongly related to the magnitude of SHR for each aggregate, the latter scaled by total organic carbon (TOC) content. We also computed the length scales over which SOM varies in each aggregate and compared this to their magnitudes of SHR, again scaled by aggregate TOC content. We discuss the implications of our findings for empirical and modelling studies which aim to (respectively) quantify and simulate the magnitude of SHR at the macro-aggregate scale.

2 Materials and methods

2.1 Aggregate samples, preparation and respiration measurements

An intact, cylindrical core of soil (diameter and length 50 mm) was collected from a field that had been under pasture for more than 15 years (British National Grid reference metres; Easting 463374, Northing 331992) in Keyworth (near Nottingham, UK).

5 The upper edge of the soil cylinder was inserted (at a depth of 5cm below the top of the mineral soil horizon) into a vertical soil face that had been exposed with a spade (the lower level of the cylinder was at a depth of 10cm below the top of the mineral horizon). The parent material of the soil at this site is a mudstone and the soil is a Luvisol (WRB, 2007) in texture-class Clay (Hodgson, 1974) based on a particle size analysis of material from a soil core collected from a location adjacent to the sampling site. After return to the laboratory (at room temperature) the intact core was removed from its container and placed on a plastic
10 sheet. The core was broken apart by hand to separate large aggregates along natural fracture surfaces and also those formed by fine roots. This procedure yielded aggregates of different sizes. We selected a subset of 9 aggregates which had shapes that were approximately either cubes or spheres with side length or diameter (respectively) of approximately 5-6 mm. We visually inspected each aggregate and rejected any which appeared to be dominated by a large single particle (e.g. a stone fragment).

We weighed each aggregate in a pre-weighed and labelled weighing boat and then placed each on a saturated 1 bar pressure
15 plate (Soil Moisture Equipment Corp, Santa Barbara, CA) for 20 minutes so that the moisture content of each aggregate would increase markedly. We then set the pressure plate to 0.5 bar (-50 kPa) for 5 hours so that each aggregate had the same moisture content, slightly less than field capacity. After removal from the pressure plate the aggregates were placed inside a filter insert (Costar (R) Spin-X Centrifuge Tube, Sigma-Aldrich, UK) which had been partially filled with 500 μm quartz beads (Sigma Aldrich, UK). A further small quantity of quartz beads were added to ensure each aggregate was surrounded and the insert
20 (including quartz beads and aggregate) was re-weighed. We added quartz beads to prevent the aggregates from fragmenting at either the freeze-drying stage or during transport to and from the synchrotron.

The filter inserts were then placed inside a glass headspace vial (Thames Restek, Pennsylvania, USA) each of which had been filled with an equal quantity of quartz beads to reduce the volume of air in the vial. A crimping tool was used to seal the headspace vials with an aluminium seal and the vials were placed in an incubator at 37° C for 24 hours. After removal of
25 the vials from the incubator, the concentration of CO₂ in the headspace of each vial was determined by removing a 0.5 cm³ subsample of gas using a syringe and injecting it into a gas chromatograph (porapak column Q 80/100 mesh in Agilent GC 7820) which had been calibrated with CO₂ standards of 100, 500, 1000 and 2000 mg l⁻¹. We subtracted the background concentration of CO₂ (400 mg l⁻¹) from each headspace analysis to give the excess CO₂ due to respiration. The septa and seals were then removed from the headspace vials and the aggregate and filter holder placed into a Costar (R) Spin-X Centrifuge
30 Tube (total volume 2 ml; see Figure 1). The un-capped centrifuge tubes were placed in a freeze drying unit for 48 hours until any moisture in the vials had been removed completely. By removing all moisture from the aggregates we wanted to ensure that the OsO₄ would diffuse completely through the soil aggregate pore space. The filter inserts were then reweighed so that the dry mass of each aggregate could be calculated.

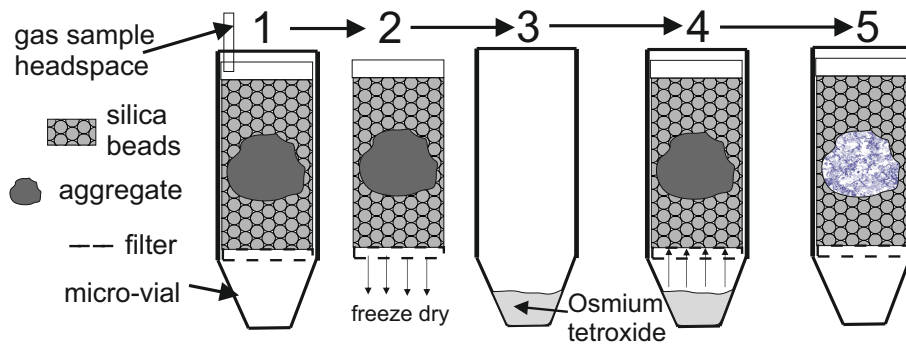


Figure 1. Schematic diagram showing a series of five steps in the treatment of the aggregates in their vials: 1) headspace gas removal, 2) freeze-drying, 3) & 4) staining with OsO_4 and 5) scanning in the synchrotron beamline.

2.2 Osmium staining of soil organic matter

The aggregates (each inside a filter insert and centrifuge vial) were placed inside a fume cupboard so that osmium tetroxide (OsO_4) could be used to stain the OM in each of the soil aggregates (Peth et al., 2014). A set of strict health and safety procedures were adopted due to the hazardous nature of OsO_4 but we do not describe these in detail here. Half a millilitre of OsO_4 was pipetted into the bottom of each centrifuge vial and the vials sealed with caps. Each was left for 48 hours inside the fume cupboard during which time the Os diffused through the base of the filter, through the glass beads and Os was adsorbed preferentially by the carbon bonds in the OM. A schematic diagram showing the main steps in this procedure is shown in Figure 1.

The filter inserts were then removed and wiped clean and the top of each filter insert was sealed using caps and Araldite resin. Each filter insert was then fixed to bespoke stainless steel supports using Araldite resin so that the filters could be placed into a synchrotron beamline.

2.3 Synchrotron X-ray CT analysis

Each of the nine aggregates inside the filter inserts were scanned using synchrotron X-ray CT at the Diamond Light Source (Harwell, UK) using the I12 beamline. Each aggregate was scanned at three energy levels: 53, 73.2 and 74.4 keV, the latter were determined to be just below and above the K-absorption edge for Os, based on initial scanning of an osmium standard material. The 53 keV energy level provided an effective means of separating the solid and pore phases. The images for each horizontal slice through the aggregates were reconstructed yielding a set of 32-bit .tif files in which each pixel has an adsorption value for each energy level, and each pixel represents a 3-D voxel with side length of 3.3 μm .

2.4 Total Organic Carbon content of aggregates

After the aggregates had been scanned in the beamline they were carefully removed from their vials and their TOC content estimated using a Elementar Vario Max C/N analyzer at 1050 $^\circ\text{C}$. Prior to measurement any inorganic carbon was removed

from the aggregates by adding HCl (5.7 M), then dried at 100 °C for 1 hour. The limit of quantification for TOC for a typical 300 mg sample was 0.18%

2.5 Synchrotron X-ray CT data processing

All the synchrotron X-ray CT data was processed using the same protocol described here. The first procedure was to subtract the absorption values from the 73.2 keV energy level (below the Os absorption edge) from the images created from the 74.4 keV energy level (above the Os absorption edge; see Peth et al. (2014)). This was undertaken using a script written in the R (R Core Team, 2013) and we subsequently refer to the resulting data and files as ‘diffedge’ (difference at the absorption edge). An example of the differences in absorption values above (74.4 keV) and below (73.2 keV) the Os absorption edge for one soil aggregate image slice example is shown in Figure 1. Note that the absorption values are generally larger above the Os edge, below the 1:1 line in Figure 2.

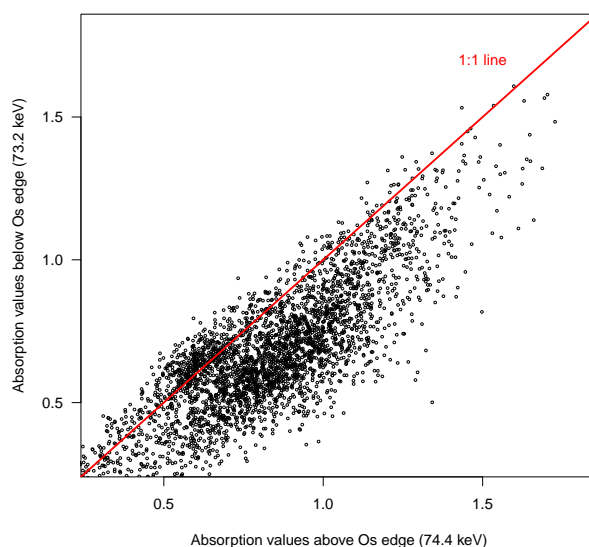


Figure 2. Raw absorption values above and below the Os absorption edge for one soil aggregate slice from the synchrotron X-ray CT beamline.

10

2.5.1 Creating masks for aggregate slices

Prior to analysing the synchrotron data at the three energy levels it was necessary to create masks of the aggregate outlines so that pixels outside the aggregate could be excluded from the analysis. Where quartz beads (with similar density to soil material) occurred adjacent to aggregates in the synchrotron images, those pixels within the beads were replaced with background absorption values using the software package VG Studio Max prior to creating masks for these images. To create the masks

15

we used a multi-stage procedure using scripts in the R environment and the image processing package Fiji (Schindelin et al., 2012) described in the supplementary material file.

Each mask was saved as an 8-bit .tif file. We wrote an R script using the raster package (Hijmans, 2014) to crop all the original images (nine aggregates each with two sets of images: i) 53 keV, and ii) the diff edge images) using the masks for each associated image slice, setting all the values outside the cropped region to a constant value.

2.5.2 Reduction of raster resolution

The original synchrotron image files comprised 2544×2544 pixels with each pixel measuring $3.3 \mu\text{m}$ and between 1400 and 2600 slices in each aggregate image stack. We found that it was challenging to process these data using large 3-D numeric arrays so we chose to reduce the resolution of the image stack by 50% in each dimension. By doing so we achieved an 8-fold reduction (i.e. a 2-fold reduction in each dimension) in the size of the numeric array. Aggregation was carried out from top to bottom for each of two neighbouring layers (e.g. layer 1&2, 3&4, ...). The aggregation process was carried out in three steps. All these steps were applied to the images from the 56 keV energy level and the diffedge files. First the masks were applied to each file and adjacent layers were aggregated horizontally (2-D) by a factor of 2 using the aggregate function in the raster package (Hijmans, 2014) using the mean function to compute the mean of the layers. Then the two horizontally aggregated layers were averaged vertically yielding a matrices of dimension 1272×1272 . Any averaged outlying values greater than 10 were set to a value of 10. The matrices were combined into a 3-D numeric array with the third (vertical dimension) equal to the half the number of slices in the original data. These processing steps were undertaken using an MPI computer cluster.

2.5.3 Segmentation of solid and pore phases

An initial approach to segment solid and pore phases in each aggregate slice based on a two-component mixture algorithm were inconsistent with realistic assumed values for organic matter particle density (Rawlins et al., 2016). So we used: i) our measurements of total organic matter, ii) the aggregate volume computed from the X-ray CT scans and, iii) assumed values for the mineral particle and organic matter densities, to compute the proportion of pore space in each aggregate using the following approach.

We computed the mass of mineral matter (M_m) by subtracting the mass of OM (M_{om} ; $\text{two} \times \text{TOC content}$; (Pribyl, 2010)) from the total mass of the aggregate. We assume a particle density of the mineral particles of (D_m) to be 2.65 g cm^3 (Hall et al., 1977) so we calculated the volume of mineral material (V_m) in each aggregate as:

$$V_m = \frac{M_m}{D_m} \quad (1)$$

We assume an OM density of 1.4 g cm^{-3} (Mayer et al., 2004). We computed the volume of OM (cm^{-3}) by dividing the mass of OM by its density.

$$V_{om} = \frac{M_{om}}{D_{om}} \quad (2)$$

In doing so we were able to determine the proportions of OM and mineral volumes in the solid phase, and the volume of pore space (V_p) as the difference of their sum from the total aggregate volume (V_{ag}):

$$V_p = V_{ag} - (V_{om} + V_m) \quad (3)$$

For each aggregate we set the threshold greyscale value so that the total number of voxels assigned as pores equated to V_p . We then created a series of .tif image files storing the two-fold solid:pore classification, with a third class value for pixels outside the aggregate.

2.5.4 Porosity, surface area, pore diameter and tortuosity index

We used the images from the segmentation of solid and pore phases to compute a series of physical properties for each aggregate. Total porosity and surface area on planar/volume images were calculated using a bespoke Win32 computer program *minkowski.exe* that includes estimation algorithms published in Ohser and Mucklich (2000). The bespoke software was originally developed and verified by Alasdair Houston at SIMBIOS (Abertay University) as part of a research degree programme.

Pore diameters were computed using a combination of the BoneJ (Doube et al., 2010) plugin for Fiji and a bespoke program which uses the method of Maximal Inscribed Balls (Ohser and Mucklich, 2000) to convert the BoneJ mask thickness map into pore diameters. We used the Fiji plugin *AnalyseSkeleton* (Arganda-Carreras et al., 2010) to determine the tortuosity index (TI) of pore branches within each aggregate, computed as the length of the pore branch divided by the Euclidean distance between their furthest ends.

2.5.5 Separation of mineral and organic matter phases

To separate all the solid phase voxels into either mineral or OM classes we used: i) the diffedge data values for each aggregate, and ii) the proportions of mineral and OM volumes in each aggregate. Those voxels with the largest values in the diffedge numeric array for each aggregate were assigned an OM classification, and the proportion of solid phase voxels assigned as OM was the volume proportion of OM in each aggregate (see Table 1). The other solid voxels were assigned a mineral classification. We reclassified the original mineral and pore classified arrays for each aggregate (section 2.5.3) into a three-fold classification (mineral, pore and OM).

2.6 Statistical and geostatistical analyses

2.6.1 Transition probabilities

We assume that the critical locations in soil for microbial respiration are the interfaces between (voxels of) OM and pore space (Monga et al., 2008). We ask the question: given that a particular voxel corresponds to OM, what is the probability that a neighbouring voxel corresponds to pore? Consider a pair of neighbouring voxels. The probability that they constitute an OM/pore interface can be written $P(OM, pore)$. If the probability that a randomly selected voxel corresponds to class OM is written as $P(OM)$ then $P(OM, pore) = P(pore|OM)P(OM)$, where the first conditional probability is the probability that

a randomly selected neighbour of an OM voxel corresponds to pore space. We call it the transition probability from OM to pore. We use the transition probability between OM and pore as a quantitative measure of OM accessibility. If one normalizes the respiration rate of an aggregate relative to its total organic content (effectively allowing for differences in $P(OM)$ between them), then it may be hypothesized that differences between the aggregates with respect to this response depend on the transition probability $P(pore|OM)$.

We computed transition probabilities for the 3-D numeric arrays in which each voxel was one of four classes: 0=mineral (M), 1=pore ($pore$), 2=organic matter (OM) and 9=mask. The total of the three transition probabilities ($P(pore|OM)$, $P(M|OM)$ and $P(OM|OM)$) is one. We wrote a script in R that progressed from the from top to the bottom of the numeric array, starting from the second layer and ending at the penultimate layer. For every iteration three neighbouring layers were used (one above, a central layer, and one below) avoiding the outermost rows and columns of the 3-D array in the analysis. All three layers were simultaneously shifted by one pixel around their initial position in the x and y directions, while for every offset combination the voxel classification was queried and concatenated with the classification of the original non-shifted central layer which shared the same spatial location (x and y). The class comparisons always originated from the central voxel to the voxels of the surrounding complete $3 \times 3 \times 3$ array subset. For the 26 neighbouring voxels, we considered transitions from the central OM voxels to the neighbouring 26 voxels. In addition to the voxel class, we also recorded the direction of transition because: i) this was necessary to remove the combination where the central layer was compared with the non-shifted central layer, and ii) in future analyses (not in this paper) we may wish to undertake directional analyses of transitions. We computed the frequency of each class combination (transition) for each layer comparison and in a final step the frequency of each transition and layer comparison was computed.

In a recent study, Falconer et al. (2015) used the proportion of OM-centred voxels which had at least one transition to a pore voxel in adjacent voxels (in our case there were 26) as a measure of OM accessibility, and so we computed these proportions for our nine aggregates. To distinguish this additional measure of accessibility from the transition probabilities, we refer to these former values as the minimum threshold OM-pore proportions.

2.6.2 Indicator variograms and variogram models

To understand the length scales over which the three phases vary, we computed 3-D indicator variograms (Webster and Oliver, 2007) for each phase and for each aggregate using scripts written in R with the *gstat* package (Pebesma, 2004). Using the 3-D numeric arrays in which each voxel had been classified as either mineral, organic matter, pore or mask (exterior) we chose a random starting point within the numeric array of each aggregate and selected a cube of voxels with 200 voxels in each dimension around this point. We then checked that less than 10% of the voxels were classed as mask. If mask values accounted for more than 10% of all voxels, a new random starting point was selected until this condition was met. We converted this 3-D array into a *gstat* object (x, y and z coordinates plus the voxel class), and excluded the exterior voxels. To compute indicator variograms for each phase we recoded the phase classes so that a single phase took a value of one, and the other phases were set to zero. We then randomly selected a subset of 50 000 voxels with which to estimate the indicator semi-variances for each phase at a series of increasing lag intervals up to a maximum of 250 voxels. We plotted a set of indicator variograms for each

phase and fit a range of single authorised variogram models to them (Webster and Oliver, 2007) . In all cases the exponential model gave the best fit and so we computed and recorded the parameters of the exponential model fitted to each set of indicator semi-variances. For the model range parameter, we recorded the effective range which in the *gstat* package is three times the theoretical range reported. We repeated this procedure 50 times for each of the three phases in each of the nine aggregates to
5 ensure that we encompassed the variation inside each aggregate. We note that each indicator variogram may not be independent because in some cases the starting points may be sufficiently close for the 3-D arrays of 200 units in each dimension to overlap.

3 Results and their interpretation

3.1 Aggregate properties and respiration rates

A set of properties determined for each of the nine soil aggregates are summarised in Table 1. There was an approximate
10 two-fold variation in the quantity of TOC in the nine aggregates (range 4.18-7.7%), whilst the magnitude of respiration (based on the CO₂ concentration scaled to the TOC content) varies by more than a factor of 6 (range 10.5-65.9 μg C mg C⁻¹ day⁻¹). There was a positive correlation between the magnitude SHR and TOC with a Pearson correlation of $r=0.29$. We do not place too great an emphasis upon this because we consider scaling the SHR TOC content to be a more relevant measure. There was an approximate two-fold variation in total porosity between the aggregates (range 21.8-45.1%) but no clear relationship
15 between total porosity and the magnitude of respiration scaled by TOC content. At the scale of the soil core we have observed strong statistical relationships between topsoil bulk density and the square root of TOC for this soil type in a local cultivated field (Lark et al., 2014), but there was no similar relationship for our nine aggregates taken from a single core. However, there was a strong negative statistical relationship between total porosity (based on averaging from the scan resolution of 3.3μm) and bulk density ($r = -0.98$) for each of the nine aggregates. There was a substantial, four-fold variation in the surface area
20 of the aggregates after it had been normalised by aggregate volume (range 16.7-69.6 mm² mm⁻³; see Table 1). The Pearson correlation between surface area normalised by aggregate volume and normalised headspace C gas concentration was both positive and reasonably large ($r =0.44$) suggesting the the former may be a factor that influences the latter.

Figure 3 shows distribution of the OM, pore and mineral phases in one aggregate slice. Using our approach to computing the volume of organic matter in each of the aggregates (section 2.5.5), it exhibits a two-fold variation between 10 and 19.5%.

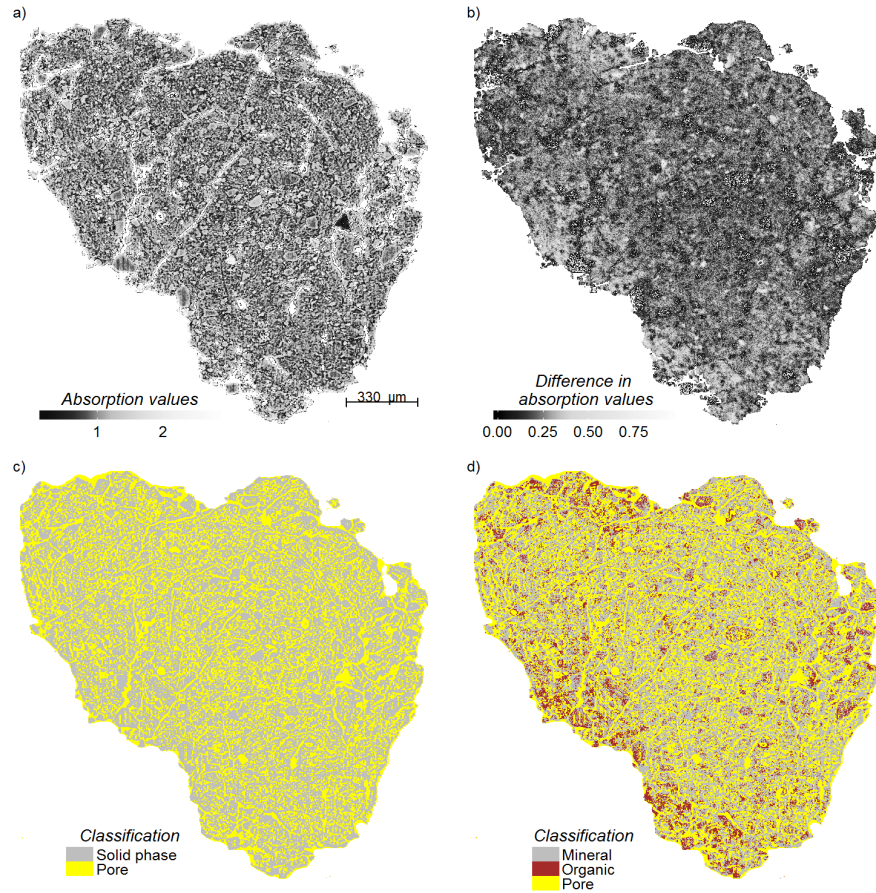


Figure 3. Horizontal cross-section through one aggregate showing: a) the raw absorption values at the low energy (56 keV), b) the difference in absorption between the two larger energy scans, c) the distribution of solid and pore phases (determined using 3a) and d) the distribution of mineral, pore and organic matter determined using both 3b) and 3c).

Table 1 Physical properties of the nine soil aggregates and quantities of CO₂ released by the aggregates from soil heterotrophic respiration during incubation (see text).

Aggregate number	37	40	43	49	55	61	67	73	76
Dry mass (mg)	106	118	177	103	112	177	146	101	103
Aggregate volume (mm ³)	73.7	70.2	137.3	70.8	79.2	118.3	95.8	60.4	56.4
TOC (%)	6.81	5.27	7.06	5.53	7.7	6.63	6.83	4.18	7.48
Dry bulk density (g cm ⁻³)	1.43	1.68	1.29	1.46	1.41	1.50	1.52	1.67	1.83
^a Porosity (%)	39.4	30.7	45.1	39.6	39.3	36.8	35.5	32.2	21.8
^b Mineral mass (mg)	91.2	105.5	152.2	91.7	94.8	153.8	125.9	92.6	87.7
^c OM volume (%)	13.9	12.6	13.0	11.5	15.6	14.2	14.9	10.0	19.5
^c Mineral volume (%)	46.7	56.7	41.8	48.9	45.2	49.0	49.6	57.8	58.7
^d Moisture loss (freeze-drying) (%)	23.5	18.1	27.8	21.3	25.3	25.8	25.2	22.8	20.0
^e Surface area (mm ²)	3462	2085	2299	4929	4807	3895	4808	4037	2858
Surface area/agg. volume (mm ² mm ⁻³)	47.0	29.7	16.7	69.6	60.7	32.9	50.2	66.8	50.7
^f (Excess) headspace C concentration (mg kg ⁻¹)	76	108	238	350	223	477	656	127	301
^g Normalised C gas concentration (µg C mg C ⁻¹ day ⁻¹)	10.5	17.3	19.1	61.5	25.8	40.6	65.9	30.1	39.0

^a solid:pore thresholds computed using aggregate volume, and assumptions for organic matter and mineral particle density. This is an image based porosity estimate based on averaging values at the scanning resolution of 6.6µm.

^b Mineral mass computed from total aggregate mass — mass of organic matter (2× TOC) .

^c Expressed as a proportion of the solid volume (excludes pore space) and assumes a mineral density of 2.65 g cm⁻³.

^d The mass proportion (%) of moisture lost between mass of field-moist aggregates and freeze-dried mass (the latter after changes in moisture introduced through the pressure plate). We cannot compute volumetric moisture content (cm³ cm⁻³) because the freeze-drying procedure also removes moisture from both pore space and organic matter.

^e Surface area was computed using a bespoke programme (see text).

^f A background CO₂ concentration of 400 mg kg⁻¹ was assumed.

^g Headspace C gas concentration normalised by the TOC content of each aggregate.

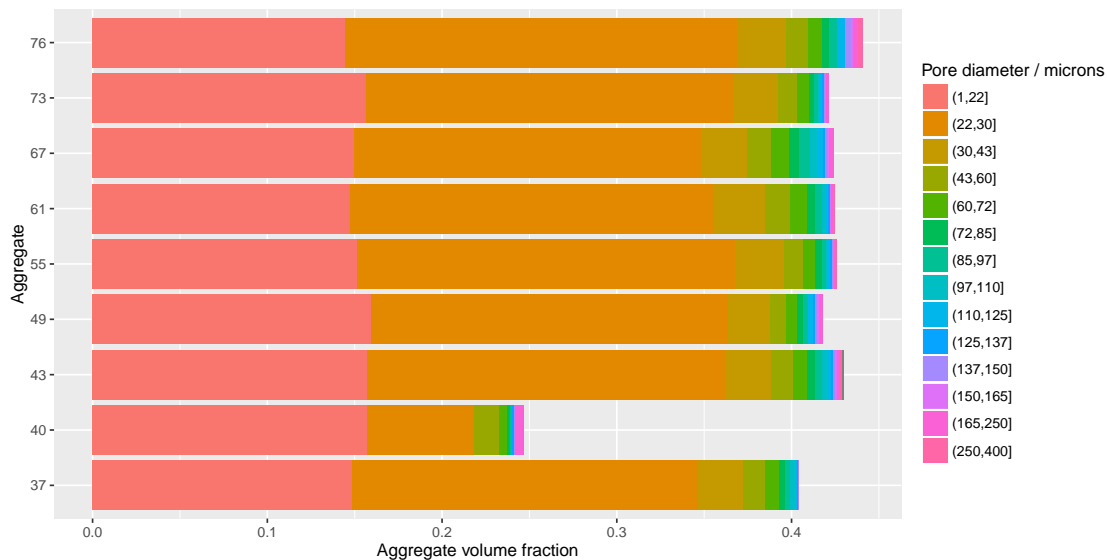


Figure 4. Distribution of pore diameters (μm^3) expressed as a proportion of total volume of a regular 3-D region extracted from each of the nine aggregates.

3.2 Pore diameters and tortuosity index values

Figure 4 shows how the pores of differing diameter (μm^3) contribute to the total pore space in each aggregate, computed for the regular blocks extracted from each of the aggregates. Pores with diameters of <22 and $22\text{--}30 \mu\text{m}^3$ account for the vast majority (82–89%) of the total pore space in each aggregate. Aggregate 40 appears to be anomalous (Figure 4), with a notably smaller porosity than the other aggregates. However, because this approach was applied to a subset of the aggregate volume (a regular three-dimensional region), in this case we believe it is not representative of the total aggregate pore space (a value of 30.7% reported in Table 1) computed using the entire aggregate volume.

The total number of pore branches in each aggregate for which TI values were calculated for the nine aggregates ranged from 247699 to 562655. There is little variation in the overall distribution of TI values for the nine aggregates (Figure 5), each having mean values between 1.29 and 1.31, and each having a small number of more tortuous pores ($\text{TI} > 2$) which are shown as outliers in Figure 5. Given the overall similarities between both pore diameters and TI values for each of the nine aggregates we have not made any comparison with their magnitudes of respiration as we do not consider it would prove meaningful.

3.3 Transition probabilities

The transition probabilities from each organic matter centred voxel to the neighbouring 26 voxels for each of the nine aggregates is shown in Figure 6, within a restricted region of a ternary diagram. These transition probabilities are estimated for this voxel resolution ($6.6 \mu\text{m}$). We know that some voxels may be misclassified because they represent a mixture of OM and mineral phases and more accurate classifications may only be possible at finer scales.

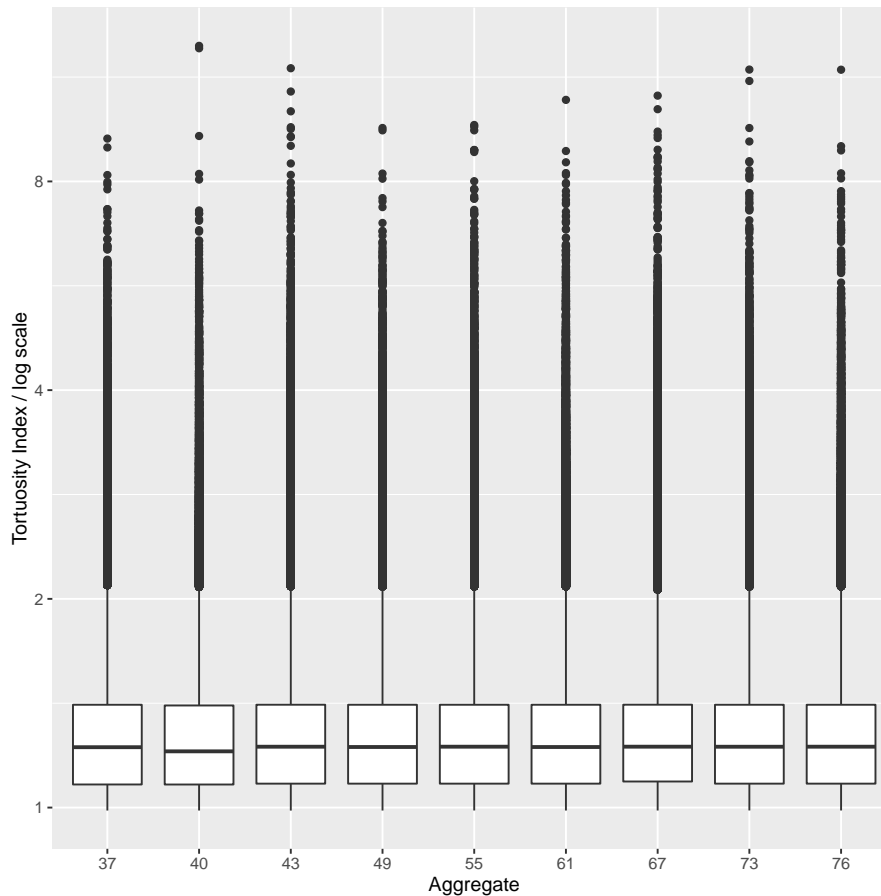


Figure 5. Distribution of tortuosity index (dimensionless) for each of the nine aggregates.

With the exception of aggregate 61, the largest overall transition probability in each case is from:to the organic phase (range 0.35-0.58). The range of organic to mineral phase transitions were between 0.32 and 0.49. In terms of OM accessibility, the OM-pore transition probabilities are generally smaller (range 0.07-0.17) than transitions to the other two phases, indicating that a relatively small proportion of all OM voxels are accessible to soil microbes. The values of our alternative measure of OM accessibility, the proportion of OM-centred voxels with at least one adjacent pore voxel (the minimum threshold OM-pore proportions), are shown in Table 2. These values range from 0.13 to 0.19% showing that the frequency distribution of the numbers of adjacent pore voxels is positively skewed, with a larger frequency of voxels having only one OM-pore transitions compared to larger numbers of OM-pore transitions around a central OM voxel. The Pearson linear correlation coefficient (r) between the magnitude of SHR (rescaled to aggregate TOC content) and the transition probabilities from a central OM voxel to a neighbouring pore voxel was 0.12, which is not particularly strong (see Figure 7).

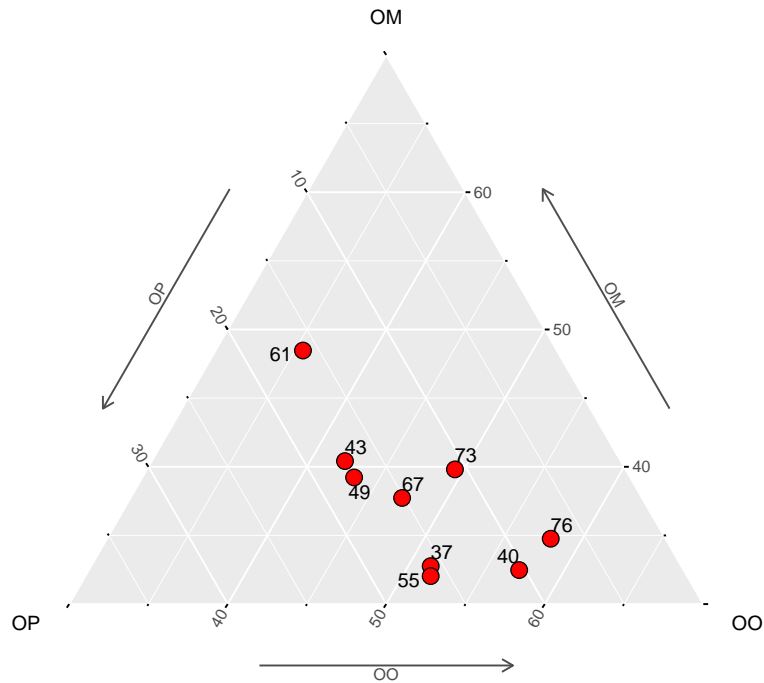


Figure 6. Ternary diagram showing the overall transition probabilities (%) between a central organic matter voxel (side length 6.6 μm) and 26 adjacent voxels (see text) for each of the nine aggregates (labelled). The transitions are between organic matter and each of the three phases (O=organic matter; P=pore, M=mineral). For example, OO=organic matter to organic matter. The truncated axes show only a sub-region of the ternary diagram. The osmium-staining of OM sorbed onto mineral particles may have resulted in misclassification of voxels that are a mixture of OM and mineral matter. We cannot account for this because such effects could only be reconciled at finer (<6.6 μm) spatial resolutions.

Table 2 - The proportion of minimum threshold voxels (at least one OM-centred voxel has an interface with an adjacent pore voxel) in each soil aggregate.

Aggregate	37	40	43	49	55	61	67	73	76
Proportion (%)	0.16	0.17	0.13	0.16	0.14	0.15	0.15	0.19	0.14

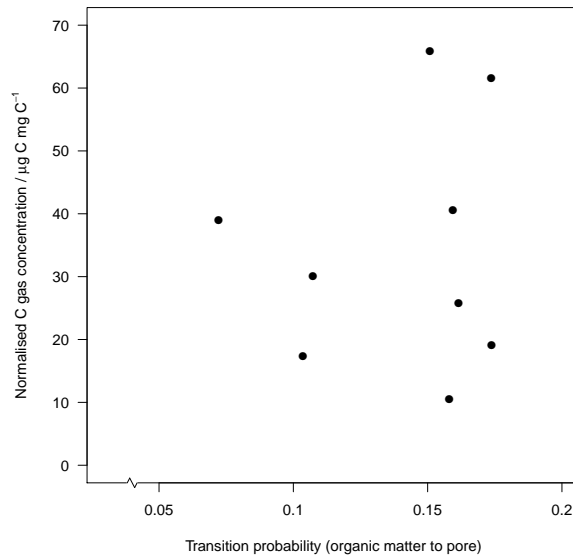


Figure 7. Scatterplot showing the transition probabilities between a central voxel of organic matter and 26 neighbouring voxels versus the magnitude of respiration (normalised to aggregate TOC content).

3.4 Indicator variograms and models fitted to them

Figure 8 shows the variation of the effective range of the exponential models fitted to the indicator variogram semivariance estimates for the 50 randomly selected blocks for the three phases in each of the aggregates. Selected statistics of the effective range values for OM are shown in Table 3.

- 5 With the exception of aggregate 61, the length scale (range value) over which organic matter varies is significantly greater than for both mineral and pore phases (Figure 8) in all aggregates. In most cases the inter-quartile range for OM is generally large when compared to that of both mineral and pore phases. Given the considerable variation in the length scales of OM variation between the nine aggregates (median range value 38-175 μm^3), we considered there may also be equivalent differences in the frequency of microsites for microbial respiration, with sites occurring more frequently where OM varies over shorter
- 10 length scales. In Figure 9 we show the median of the effective model ranges (Table 3) of OM matter plotted against the TOC normalised respiration values from the laboratory measurements (Table 1). However, there is no linear relationship between these values (Pearson linear correlation ($r = 0.01$; Figure 9).

- We could not find other published studies which have reported the relative magnitude of unaccounted for short-scale (6.6 μm) variation of mineral, pore and OM phases in three dimensions within soil aggregates, and these values may be useful for
- 15 similar studies. This unaccounted for variation (nugget variance) is the variance of analytical error plus variation that occurs at scales shorter than the sampling resolution. The magnitude of nugget variance is often expressed as a proportion of the

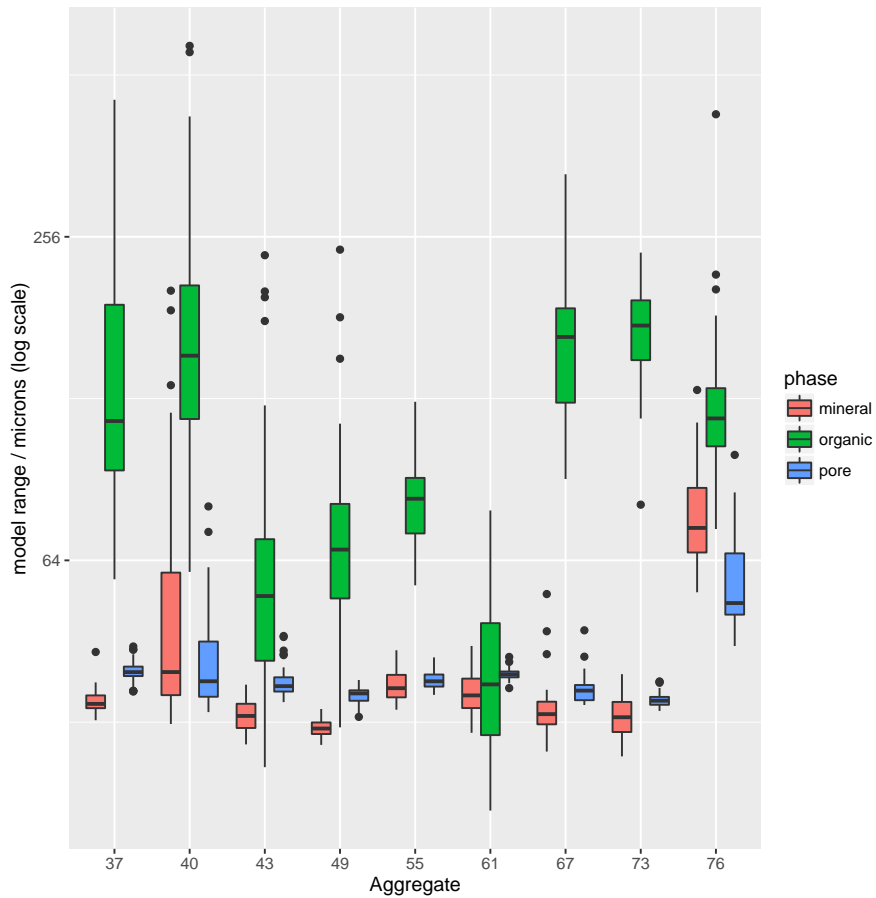


Figure 8. Boxplot showing variations in the model range estimate for exponential models fitted to indicator variograms of the three phases (mineral, soil organic matter and pore space) for each of the nine aggregates. The semivariance estimates were computed from a subsample of 50 000 locations from 50 separate blocks (each measuring $200 \times 200 \times 200$ voxels) within each aggregate.

nugget plus sill variance (the variance at the range of the fitted model). Across all aggregates, the median proportions of nugget variance for the organic matter phases varied between 0.47 and 0.73, whilst the range of the median proportions of the pore (0.0-0.09) and mineral (0.0-0.37) nugget variance were smaller.

4 Discussion

- 5 In our previous analysis (Rawlins et al., 2016), we reported what we now recognise were unrealistically small values for OM particle density which gave rise to small total porosity values (4.4-11.1%) in each aggregate. Using the modified approach we report here, there was a very strong correlation ($r=0.98$) between total soil porosity and aggregate BD for our nine aggregates, which suggests this approach was considerably more successful than the previous one.

Table 3 - Selected statistics of the effective exponential model ranges (μm) fitted to the indicator variograms of organic matter voxels for each of the nine aggregates.

Aggregate	25th percentile	median	75th percentile	sd
37	94	116	191	109
40	117	154	208	118
43	42	55	70	46
49	54	67	82	36
55	72	83	91	16
61	30	38	49	15
67	126	167	188	56
73	151	175	195	32
76	104	118	134	55

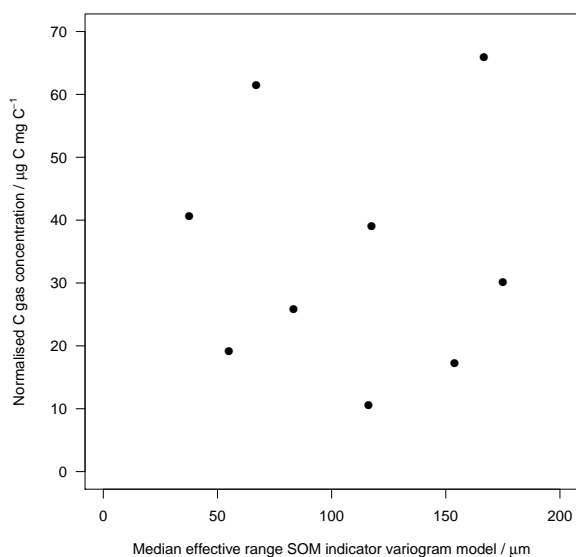


Figure 9. Scatterplot of median model range estimate for exponential models fitted to indicator variograms of organic matter versus headspace CO_2 gas concentration normalised to the carbon content of the aggregate.

We have reported what we understand is the first data showing complete 3-D macro-aggregate scale distributions of OM, pore and mineral phases at fine ($6.6\ \mu\text{m}$) scales, plus the length scales over which they vary and the transition probabilities at interfaces between these phases. These data could be used to test both existing and new models which aim to account for small (aggregate) scale variations in SHR (Monga et al., 2008; Falconer et al., 2015). To fully understand the processes governing

SHR in the soil aggregates we studied it is necessary to quantify the distribution of OM and pore space at scales of less than 250 μm , the scale below which the majority of variation in these key soil properties occurs.

Our analyses could be used to improve quantitative estimates of the accessibility of both particulate ($> 50 \mu\text{m}$) and finer OM in soil aggregates. Our analysis showed that OM voxels which had an overall transition probability to a neighbouring pore voxel (our criteria of accessibility) of between 0.07 and 0.17. In their simulation study, Falconer et al. (2015) used proportions of accessible particulate OM voxels (those with at least one neighbouring pore voxel) of between 20 and 100 % (range of OM contents 1.4-7 %). Using the same metric, we estimated that accessible OM voxels account for a substantially smaller proportion (range 13-19 %) of the total quantity of OM in each of the nine aggregates. In their study Falconer et al. (2015) placed POM at the pore:solid interface which likely accounts for the larger particulate OM accessibility proportions they report and this approach may require modification if more realistic OM accessibility proportions are to be simulated. However, estimated organic matter to pore transition probabilities may be larger at finer X-ray CT resolutions ($<6.6 \mu\text{m}$) where any misclassification due to edge effects can be resolved.

We plan to extend our analysis further using the approach proposed by Kravchenko et al. (2015) by: i) quantifying the distribution of particulate organic matter (length scales $> 50 \mu\text{m}$) and, ii) computing a statistic of pore connectivity for each aggregate and plotting it against SHR, and, iii) identifying those pores which are connected to the exterior of each aggregate, providing a direct pathway for the diffusion of gas to and from sites of intra-aggregate SHR. These data could be used to assess whether these factors are strongly correlated with the magnitude of SHR. It would also be helpful to estimate the distribution of water-filled pores (Monga et al., 2008) at the suction (-50 kPa) used in our experiment as this would determine which sites of microbial respiration may have been anaerobic, influencing the magnitude of SHR. In subsequent work we will also attempt to determine the location of finely disseminated OM sorbed onto mineral surfaces. In doing so we would need to identify an upper threshold size (volume and shape) for sorbed OM, and rules governing the size and shape of neighbouring mineral particles.

We reported that for a set of nine aggregates there was some evidence that greater surface area of the solid phase (both mineral and organic matter phases) had a reasonably strong positive correlation ($r=0.44$) with the magnitude of SHR, having scaled the respiration rates to TOC content. This relationship requires further investigation using macro-aggregates with a wide range of TOC concentrations and textures to determine whether this relationship is statistically significant, and how it might be interpreted in relation to frequency of occurrence of microbial microsites.

In their study, Peth et al. (2014) used air-dried soil aggregates whilst we chose to freeze-dry the aggregates in our experiment to maximise absorption of osmium onto organic carbon bonds. It would be useful to compare the results of both approaches to determine whether the drying process has significant implications for the extent of Os absorption throughout an aggregate. This could be achieved by comparing the magnitude and spatial distribution of Os using energy dispersive X-ray analysis linked to a scanning electron microscope, the method used by Peth et al. (2014) to validate their original approach.

We chose to make a single measurement of SHR based on the headspace concentration of CO_2 after 24 hours and this will likely reflect mineralisation of the most labile OM, the concentration of which will vary between aggregates. This may have been a dominant control on SHR and we cannot account for it when we compare our measurements of SHR with the accessibility of OM in each aggregate. If similar studies are undertaken in future, it may be preferable to make more frequent

measurements of headspace CO₂ concentrations over a more prolonged period and to establish the quantities of more labile organic matter in each aggregate using advanced analytical approaches (Sebag et al., 2006).

5 Conclusions

We have shown how a combination of synchrotron X-ray CT, osmium staining and TOC measurements can be used to successfully quantify the 3-D distribution of OM, pore and mineral phases throughout soil macro-aggregates at fine scales (6.6 μm). The magnitude of SHR which we measured for each of nine macro-aggregates (controlling for moisture content and temperature) varied by a factor of six whilst their TOC contents varied by less than a factor of two. Certain features of the pores, the distribution of pore diameters their tortuosity indices in the nine aggregates were very similar. After normalising for aggregate volume, there was a four-fold variation in the aggregate surface areas and this had a reasonably strong linear correlation ($r=0.44$) with the magnitude of SHR (after scaling to TOC content). This relationship needs further investigation using a greater number of soil samples with a wider range of surface areas (soil textures) and OM concentrations.

The transition probabilities between OM-centred voxels and adjacent pore voxels – a measure of OM accessibility – varied between 0.07 and 0.17 and were generally smaller than the transitions to the other two phases. We believe these are the first data to quantify 3-D macro-aggregate OM accessibility at fine scales and could be used to help parameterise models of OM mineralization. There was a weak linear correlation ($r=0.12$) between OM accessibility (transition probability between pore and OM) and the magnitude of SHR. There were substantial differences in median length scales (median ranges 38-175 μm) over which OM varied between aggregates based on models fitted to their indicator variograms. Studies of the processes governing SHR in soil macro-aggregates need to be undertaken at fine scales (less than 250 μm) because this is the upper threshold of the length scales over which mineral phases, pores and OM are likely to vary.

Author contributions. The following authors (initials) made the specified contributions to the paper: BGR coordinated the project, lab work, data analysis and wrote parts of the manuscript; CR and RA undertook the synchrotron analyses of the osmium-stained soil aggregates and contributed to the synchrotron analyses in the manuscript; RML contributed to the design of the experiment, the geostatistical analysis of the data and wrote part of the manuscript; AH provided the code for computing surface area and contributed to the manuscript. JW undertook the laboratory-based osmium staining and headspace CO₂ analyses and wrote the methods section; SR wrote R codes for the analyses of transition probabilities of the 3D arrays and other analyses and wrote this section of the manuscript.

Acknowledgements. This work was supported by the use of the Diamond Beamline (I12) at the Diamond Synchrotron (Harwell, UK) project reference number EE9535. We thank Martin Hurst for helping to create the aggregate masks and Craig Sturrock for assistance with the image processing. We thank the following staff from BGS for their assistance with the beamtime at Diamond: Toni Milodowski, Jeremy Rushton, Lorraine Field and Dan Parkes. We thank Gemma Purser for undertaking the headspace CO₂ analyses and Vicky Moss-Hayes for measuring the TOC content of the nine aggregates. Simona Hapca (Abertay University) devised the approach to create masks for each aggregate slice. This paper is published with the permission of the Executive Director of the British Geological Survey (NERC).

References

- Arganda-Carreras, I., Fernández-González, R., Muñoz-Barrutia, A., and Ortiz-De-Solorzano, C.: 3D reconstruction of histological sections: Application to mammary gland tissue, *Microscopy Research and Technique*, 73, 1019–1029, doi:10.1002/jemt.20829, <http://dx.doi.org/10.1002/jemt.20829>, 2010.
- 5 Chenu, C., Hassink, J., and Bloem, J.: Short-term changes in the spatial distribution of microorganisms in soil aggregates as affected by glucose addition, *Biology and fertility of soils*, 34, 349–356, 2001.
- Cox, P., Betts, R., Jones, C., Spall, S., and Totterdell, I.: Acceleration of global warming due to carbon-cycle feedbacks in a coupled climate model, *Nature*, 408, 184–187, <http://eprints.soton.ac.uk/7813/>, 2000.
- Davidson, E. and Janssens, I.: Temperature sensitivity of soil carbon decomposition and feedbacks to climate change, *NATURE*, 440, 165–173, doi:10.1038/nature04514, 2006.
- 10 Doube, M., Klosowski, M. M., Arganda-Carreras, I., Cordelières, F. P., Dougherty, R. P., Jackson, J. S., Schmid, B., Hutchinson, J. R., and Shefelbine, S. J.: BoneJ: Free and extensible bone image analysis in ImageJ, *Bone*, 47, 1076 – 1079, doi:<http://dx.doi.org/10.1016/j.bone.2010.08.023>, <http://www.sciencedirect.com/science/article/pii/S8756328210014419>, 2010.
- Dungait, J. A. J., Hopkins, D. W., Gregory, A. S., and Whitmore, A. P.: Soil organic matter turnover is governed by accessibility not recalcitrance, *Global Change Biology*, 18, 1781–1796, doi:10.1111/j.1365-2486.2012.02665.x, <http://dx.doi.org/10.1111/j.1365-2486.2012.02665.x>, 2012.
- 15 Falconer, R. E., Battaia, G., Schmidt, S., Baveye, P., Chenu, C., and Otten, W.: Microscale Heterogeneity Explains Experimental Variability and Non-Linearity in Soil Organic Matter Mineralisation, *PLoS ONE*, 10, e0123 774, 2015.
- Hall, D., Reeve, M., Thomasson, A., and Wright, V.: Water retention, porosity and density of field soils. *Soil Survey Technical Monograph* No. 9., Rothamsted Experimental Station, 1977.
- 20 Hapca, S., Baveye, P. C., Wilson, C., Lark, R. M., and Otten, W.: Three-Dimensional Mapping of Soil Chemical Characteristics at Micro-metric Scale by Combining 2D SEM-EDX Data and 3D X-Ray CT Images, *PLOS ONE*, 10, doi:10.1371/journal.pone.0137205, 2015.
- Hijmans, R. J.: raster: Geographic data analysis and modeling, <http://CRAN.R-project.org/package=raster>, r package version 2.3-0, 2014.
- Hirano, T., Kim, H., and Tanaka, Y.: Long-term half-hourly measurement of soil CO₂ concentration and soil respiration in a temperate deciduous forest, *Journal of Geophysical Research: Atmospheres*, 108, n/a–n/a, doi:10.1029/2003JD003766, <http://dx.doi.org/10.1029/2003JD003766>, 4631, 2003.
- 25 Hodgson, J. M.: *Soil Survey Field Handbook*. Technical Mono-graph No 5, Rothamsted Experimental Station, 1974.
- Juarez, S., Nunan, N., Duday, A.-C., Pouteau, V., Schmidt, S., Hapca, S., Falconer, R., Otten, W., and Chenu, C.: Effects of different soil structures on the decomposition of native and added organic carbon, *European journal of soil biology*, 58, 81–90, doi:10.1016/j.ejsobi.2013.06.005, 2013.
- 30 Killham, K., AMATO, M., and LADD, J.: Effect of substrate location in soil and soil pore-water regime on carbon turnover, *Soil Biology & Biochemistry*, 25, 57–62, doi:10.1016/0038-0717(93)90241-3, 1993.
- Kravchenko, A. N., Negassa, W. C., Guber, A. K., and Rivers, M. L.: Protection of soil carbon within macro-aggregates depends on intra-aggregate pore characteristics, *Scientific Reports*, 5, 16 261, doi:10.1038/srep16261 <http://www.nature.com/articles/srep16261#supplementary-information>, <http://dx.doi.org/10.1038/srep16261>, 2015.
- 35

- Lark, R. M., Rawlins, B. G., Robinson, D. A., Lebron, I., and Tye, A. M.: Implications of short-range spatial variation of soil bulk density for adequate field-sampling protocols: methodology and results from two contrasting soils, *European Journal of Soil Science*, 65, 803–814, doi:10.1111/ejss.12178, <http://dx.doi.org/10.1111/ejss.12178>, 2014.
- Lehmann, J., Kinyangi, J., and Solomon, D.: Organic matter stabilization in soil microaggregates: implications from spatial heterogeneity of organic carbon contents and carbon forms, *Biogeochemistry*, 85, 45–57, doi:10.1007/s10533-007-9105-3, 2nd International Conference on Mechanisms of Soil Organic Matter Stabilization, Monterey, CA, OCT, 2005, 2007.
- Leue, M., Ellerbrock, R. H., and Gerke, H. H.: DRIFT mapping of organic matter composition at intact soil aggregate surfaces (in Preferential flow), *Vadose Zone Journal*, 9, 317–324, 2010.
- Li, Y., Liu, Y., Wu, S., Niu, L., and Tian, Y.: Microbial properties explain temporal variation in soil respiration in a grassland subjected to nitrogen addition, *Scientific reports*, 5, doi:10.1038/srep18496, 2015.
- Mayer, L. M., Schick, L. L., Hardy, K. R., Wagai, R., and McCarthy, J.: Organic matter in small mesopores in sediments and soils, *Geochimica et Cosmochimica Acta*, 68, 3863 – 3872, doi:<http://dx.doi.org/10.1016/j.gca.2004.03.019>, <http://www.sciencedirect.com/science/article/pii/S0016703704002443>, 2004.
- Monga, O., Bousso, M., Garnier, P., and Pot, V.: 3D geometric structures and biological activity: Application to microbial soil organic matter decomposition in pore space, *Ecological Modelling*, 216, 291 – 302, doi:<http://dx.doi.org/10.1016/j.ecolmodel.2008.04.015>, <http://www.sciencedirect.com/science/article/pii/S0304380008002044>, 2008.
- Moyano, F. E., Vasilyeva, N., Bouckaert, L., Cook, F., Craine, J., Curiel Yuste, J., Don, A., Epron, D., Formanek, P., Franzluebbers, A., Ilstedt, U., Kätterer, T., Orchard, V., Reichstein, M., Rey, A., Ruamps, L., Subke, J.-A., Thomsen, I. K., and Chenu, C.: The moisture response of soil heterotrophic respiration: interaction with soil properties, *Biogeosciences*, 9, 1173–1182, doi:10.5194/bg-9-1173-2012, <http://www.biogeosciences.net/9/1173/2012/>, 2012.
- Negassa, W. C., Guber, A. K., Kravchenko, A. N., Marsh, T. L., Hildebrandt, B., and Rivers, M. L.: Properties of Soil Pore Space Regulate Pathways of Plant Residue Decomposition and Community Structure of Associated Bacteria, *PLOS ONE*, 10, doi:10.1371/journal.pone.0123999, 2015.
- Ohser, J. and Mucklich, F.: *Statistical Analysis of Microstructures in Materials Science.*, John Wiley & Sons, 2000.
- Pebesma, E. J.: Multivariable geostatistics in S: the gstat package, *Computers & Geosciences*, 30, 683–691, 2004.
- Peth, S., Chenu, C., Leblond, N., Mordhorst, A., Garnier, P., Nunan, N., Pot, V., Ogurreck, M., and Beckmann, F.: Localization of soil organic matter in soil aggregates using synchrotron-based X-ray microtomography, *Soil Biology and Biochemistry*, 78, 189 – 194, doi:<http://dx.doi.org/10.1016/j.soilbio.2014.07.024>, <http://www.sciencedirect.com/science/article/pii/S0038071714002648>, 2014.
- Pribyl, D. W.: A critical review of the conventional {SOC} to {SOM} conversion factor, *Geoderma*, 156, 75 – 83, doi:<http://dx.doi.org/10.1016/j.geoderma.2010.02.003>, <http://www.sciencedirect.com/science/article/pii/S0016706110000388>, 2010.
- R Core Team: R: A Language and Environment for Statistical Computing, R Foundation for Statistical Computing, Vienna, Austria, <http://www.R-project.org/>, 2013.
- Rawlins, B. G., Wragg, J., Rheinhard, C., Atwood, R. C., Houston, A., Lark, R. M., and Rudolph, S.: Three dimensional soil organic matter distribution, accessibility and microbial respiration in macro-aggregates using osmium staining and synchrotron X-ray CT, *SOIL Discussions*, 2016, 1–24, doi:10.5194/soil-2016-32, <http://www.soil-discuss.net/soil-2016-32/>, 2016.
- Schindelin, J., Arganda-Carreras, I., Frise, E., Kaynig, V., Longair, M., Pietzsch, T., Preibisch, S., Rueden, C., Saalfeld, S., Schmid, B., et al.: Fiji: an open-source platform for biological-image analysis, *Nature methods*, 9, 676–682, 2012.

- Sebag, D., Disnar, J. R., Guillet, B., Di Giovanni, C., Verrecchia, E. P., and Durand, A.: Monitoring organic matter dynamics in soil profiles by ‘Rock-Eval pyrolysis’: bulk characterization and quantification of degradation, *European Journal of Soil Science*, 57, 344–355, doi:10.1111/j.1365-2389.2005.00745.x, <http://dx.doi.org/10.1111/j.1365-2389.2005.00745.x>, 2006.
- Tisdall, J. M. and Oades, J. M.: Organic matter and water-stable aggregates in soils, *Journal of Soil Science*, 33, 141–163, doi:10.1111/j.1365-2389.1982.tb01755.x, <http://dx.doi.org/10.1111/j.1365-2389.1982.tb01755.x>, 1982.
- 5 Webster, R. and Oliver, M. A.: *Geostatistics for Environmental Scientists*, Second Edition, John Wiley and Sons, Ltd, 2007.
- WRB, I. W. G.: *World Reference Base for Soil Resources 2006*, first update 2007. *World Soil Resources Reports No. 103.*, FAO Rome, 2007.
- Yu, X., Wu, C., Fu, Y., Brookes, P. C., and Lu, S.: Three-dimensional pore structure and carbon distribution of macroaggregates in biochar-amended soil, *European Journal of Soil Science*, 67, 109–120, doi:10.1111/ejss.12305, <http://dx.doi.org/10.1111/ejss.12305>, 2016.