



## Morphological dynamics of gully systems in the sub-humid Ethiopian Highlands: The Debre Mawi watershed

Assefa D. Zegeye<sup>1,2</sup>, Eddy J. Langendoen<sup>3</sup>, Cathelijne R. Stoof<sup>4</sup>, Seifu A. Tilahun<sup>5</sup>, Dessalegn C. Dagnew<sup>5</sup>, Fasikaw A. Zimale<sup>5</sup>, Christian D. Guzman<sup>1</sup>, Birru Yitaferu<sup>2</sup>, Tammo S. Steenhuis<sup>1,5</sup>

5 <sup>1</sup>Department of Biological and Environmental Engineering, Cornell University, Ithaca, NY, USA

<sup>2</sup>Amhara Region Agricultural Research Institute, Bahir Dar, Ethiopia

<sup>3</sup>US Department of Agriculture, Agricultural Research Service, National Sedimentation Laboratory, Oxford, MS 38655, USA

<sup>4</sup>Soil Geography and Landscape Group, Wageningen University, 6700 AA Wageningen, the Netherlands.

<sup>5</sup>School of Civil and Water Resources Engineering, Bahir Dar University, Bahir Dar, Ethiopia.

10 \*Correspondence to: T.S. Steenhuis, ([tssl@cornell.edu](mailto:tssl@cornell.edu))


**Abstract.** Gully expansion in the Ethiopian highlands dissects vital agricultural lands with the eroded materials adversely impacting downstream resources, for example as they accumulate in reservoirs. While gully expansion and rehabilitation have been more extensively researched in the semi-arid region of Ethiopia, few studies have been conducted in the (sub) humid region. For that reason, we assessed the severity of gully erosion and identified gully-forming processes in 13 selected permanent  
15 gullies in the sub-humid Debre Mawi watershed, 30 km south of Lake Tana, Ethiopia. In addition, the rate of expansion of the entire drainage network in the watershed was determined using 50 cm resolution aerial imagery flown in 2005 and 2013. More than 0.7 million tons (or 155 t ha<sup>-1</sup> yr<sup>-1</sup>) of soil was lost during this period due to actively expanding gullies. The net gully area in the entire watershed increased more than 4-fold from 4.5 ha in 2005 to 20.4 ha in 2013 (> 3% of the watershed area), indicating the growing severity of gully erosion and hence land degradation in the watershed.

20 Soil losses were caused by upslope migrating gully heads through a combination of gully head collapse and removal of the failed material by runoff. Collapse of gully banks and retreat of headcuts was most severe in locations where elevated groundwater tables saturated gully head and bank soils, destabilizing the soils by decreasing their shear strength. Elevated groundwater tables were thereby the most important cause of gully expansion. Additional factors that strongly relate to bank collapse were the height of the gully head and the size of the drainage area. Soil physical properties (e.g., texture and bulk density) only had minor effects.

25 Conservation practices that address the most important controlling factors are principally the most effective ways of protecting gully development and expansion. These consist of lowering water table elevation and regrading the gully head and sidewall to reduce the occurrence of gravity-induced mass failures. Planting suitable vegetation on the gully face and around the boundary can also decrease the risk of bank failure by reducing pore-water pressures and reinforcing the soil. Best management practices affecting the runoff contributing catchment may decrease the overland runoff-induced gully head erosion.

30 **Keywords:** erosion, headcut, land degradation, sediment, East Africa, Ethiopia

### 1 Introduction

Gully erosion is likely the most serious form of land degradation (Lamb et al., 2005;  et al., 2003). Gullies form because they are an energy-efficient way for runoff to travel from uplands to valley bottoms and permanent channels (Gyssels and Poesen, 2003; Simon et al., 2011). They can contribute more than 90% of catchment sediment yield (Tebebu et al., 2010; Simon



35 et al., 2011; Zegeye et al., 2014). Gullies have also been found to damage structures and transport routes (Nyssen et al., 2004b; Valentin et al., 2005).


Gullyng is a threshold-dependent process controlled by a wide range of factors (Valentin et al., 2005), such as mechanic action of water, soil properties, and drainage area. The mechanic actions of water at the gully bottom can result in a rapid mass movement on the gully side (Frankriet et al., 2015). When these mechanic actions at the gully head exceed the cohesive strength of soil, erosion proceeds upslope through a headward cutting gully (Munoz-Robels et al., 2010). Interactions between such processes are important as hydraulic erosion promotes bank collapse, which then modifies subsequent hydraulic erosion (Thorne, 1990; Avni, 2005). Similarly, gully formation is initiated with the occurrence of saturation-induced high pore-water pressures, which lead to seepage erosion that ultimately gives rise to gully formation (Daba et al., 2013; Tilahun et al., 2013a). Active gully networks are predominantly found in the saturated valley-bottomlands (Tebebu et al., 2010; Langendoen et al., 2014; Steenhuis et al., 2014), and the deepest and the most spectacular gullies occur in the bottom of the watershed where in sub-humid monsoonal and wetter climates, the soil becomes saturated starting around the middle of the rainy phase and then remain saturated until the end of the rainy season (Langendoen et al., 2014; Tebebu et al., 2014).

Soil properties and soil types also play a role in gully formation and expansion. For example, Vertisols, heavy clay soils with a high proportion of swelling clays (IUSS Working Group WRB, 2015), form deep wide cracks from the surface downward when they dry out and are prone to the development of pipes that can collapse and thereby turn into rills or gullies (Valentin et al., 2005). This may be one of the reasons that most severe gully areas are often associated with Vertisols (Valentin et al., 2005; Tebebu et al., 2014). Similarly, in pasture bottom lands, piping often leads to development of permanent gullies (Jones, 1987; Zegeye et al., 2014). These pipes are part of gully networks and during the rainy season, the infiltrating rainfall discharges through the pipes, which increases the lower soil horizon's vulnerability to erosion. After a while, all the pipes become connected, increasing the size of the eventual gully.

The drainage area at the gully head is the most important parameter explaining linear, areal and volumetric gully headcut retreat (Van der Kerkhove et al., 2003; Frankl et al., 2012, 2013). Runoff-contributing drainage area can be used as a surrogate for runoff, especially if it is assumed that the rainfall amount is equal for all drainage areas and that surface conditions and land use are also very similar (Oostwoud Wijdenes and Bryan, 2001). Frankl et al. (2012) reported that among all environmental characteristics in the catchment, only the drainage area had a strong positive association with gully headcut retreat. Similarly, when data from stable and unstable sub-catchments were combined, the main factors related to gully volume were drainage area of gully and stream heads (Muñoz-Robles et al., 2010). Nyssen et al. (2002) claimed that increasing the drainage area of the gully head enhances gully development. Additionally, long-term retreat rates often show negative-exponential trends with runoff-contributing area of the gully head, which could be explained by the declining runoff-contributing area of the gully head as it moves upslope (Begin et al., 1980).

Most gully erosion studies in Ethiopia have been carried out in the semi-arid Tigray region, northern Ethiopia (e.g., Billi and Dramis, 2003; Nyssen et al., 2006; Tamene et al., 2006; Nyssen et al., 2008; Frankl et al., 2012). In this region, rehabilitation of gully erosion has been relatively successful (soil loss has been decreased to a range of 1-6 t ha<sup>-1</sup>) by using check dams and upland soil and water conservation (SWC) measures (Nyssen et al., 2004a, 2006, 2009). However, such physical structures have been ineffective to control gully erosion in the (sub) humid Ethiopian highlands, where gullies are formed in saturated Vertisol areas and where water flow often bypasses the check dams (Langendoen et al., 2014; Dagnew et al., 2015). This is because the runoff





mechanism in the humid region is different from that in the arid and semi-arid regions (Bayabil et al, 2010; Engida et al, 2011; Tilahun et al., 2013a,b; Steenhuis et al., 2014). Conservation structures that are effective in preventing gully erosion by overland flow in semi-arid regions (Nyssen et al., 2004a, 2006), may not be effective on the saturated areas that promote gully formation and expansion in the humid Ethiopian highlands (Tebebu et al., 2010). 

Thus, there is a clear need for a better understanding of gully erosion processes and factors governing these processes in the sub-humid Ethiopian highlands before effective gully control or rehabilitation strategies can be designed. The objectives of this study were therefore: (1) to understand gully erosion processes in sub-humid Ethiopian highlands and identify factors controlling these processes for effective conservation practices, and (2) to provide quantitative estimates of the severity of gully erosion in the sub-humid Debre Mawi watershed.

## 2 Research Method

### 2.1 Description of the Study Area

Our study area, the Debre Mawi watershed, is located in the sub-humid highlands of northwest Ethiopia, 30 km south of Bahir Dar along the road to Adet, and lies between 11°20' and 11°22' N and 37°24' and 37°26' E. The watershed drains an area of 608 ha, and its altitude ranges from 2194 to 2362 m a.s.l.; the elevations of the studied gullies range from 2212 to 2272 m a.s.l. Rainfall is unimodal with an average value of 1240 mm yr<sup>-1</sup>. The majority of the annual rainfall (>70%) falls between June and the beginning of September. The dry season lasts between 8-9 months. The minimum and maximum monthly temperatures are 9 °C and 26 °C, respectively.

The  morphology of the Debre Mawi watershed is strongly controlled by geological settings. The lava dykes in the watershed affect the hydrology upslope, forcing subsurface flow to the surface resulting in saturated source areas for surface runoff (Abiy, 2009). Soils are mainly Nitisols in the uplands, Vertisols in the bottom slopes, and Regosols on the steep hillslopes. 92% of the watershed is cultivated, 6% is rangeland and the remaining 2% is mainly covered by eucalyptus trees and shrub . The small indigenous shrubs/natural vegetation are predominantly found on the steep hillslopes.

The soils on the steep slopes (20-30°) in the upper regions are too shallow to sustain crop growth, whereas the less sloping areas in the upper portion of the watershed are predominately cultivated with the major crops: tef (*Eragrostis abyssinica*), finger-millet (*Eleusine coracana*), maize (*Zea mays*) and wheat (*Triticum aestivum*). The mid-slopes of the watershed consist of cropland with mainly teff and some millet and maize. Most fields in this area are cropped twice a year. In the main growing season (June – August), farmers primarily cultivate tef and barley (*Hordeum vulgare*), and after these crops are harvested, they use the residual moisture to cultivate chickpeas (*Cicer arietinum*), grass pea (*Lathyrus sativus*) and wheat as secondary crops from September to December. The gently sloping areas (0-6°) contain the periodically saturated bottomlands, which are in pasture and significantly affected by active gully networks. Free grazing is prohibited on most of the grazing lands, particularly on the upper slopes and the valley-bottom areas where the gullies form. The community established bylaws in 2010 to sustain this enclosure, and the farmers started to use a cut-and-carry system to feed their livestock: biomass is now cut on this enclosed part of the watershed and then transported to farms for fodder. This cut-and-carry system is primarily aimed at gully rehabilitation but also used as a best practice to maximize biomass yields for animal feed, although enforcement of the rules is inconsistent.



Here, we focus on the gully processes in the above mentioned bottomlands, and study both the medium-term (8 years, from 2005 to 2013) and short term (2 years, from 2013 to 2014) gully advancement in the watershed. Specifically, we conducted a comprehensive study of the dynamics of 13 gully headcuts (hereafter referred to as G1 through G13), and factors controlling these dynamics. Gullies G1 and G9 through G13 are located in the central part of the watershed, and gullies G2 through G8 are  
110 located at the bottom flat area of the watershed (Fig. 1). All gullies except G11 and part of G6 are situated on communal grazing lands that were enclosed recently.

## 2.2 Data collection and analysis

### 2.2.1 Gully widening and headcut retreat during the 2013 and 2014 rainy seasons

Short-term monitoring of gully headcut retreat and expansion was conducted for the 13 gullies during the 2013 and 2014 rainy  
115 seasons (June to early September). Headcut retreat and expansion are characterized by the change in gully length (L), width (W), and volume (V). The headcut retreat and gully width were measured repeatedly (about 5-8 times or mostly following rainstorms, otherwise on average every 2 weeks) using a tape meter and benchmark pins installed 5 to 10 m from the gully edges. However, a few gullies expanded more than this distance and the affected pins were reinstalled 5 to 10 m upslope of the newly formed gully edges. Gully cross-sectional geometry was surveyed by dividing each cross section into several trapezoidal segments at  
120 abrupt changes in profile, and measuring the width and depth of each segment (Fig. 2). Cross-sectional area (A) and surface area (S) were then calculated using Eqs. 1 and 2 respectively.

$$A = \sum_i \bar{h}_i w_i \quad (1)$$

$$S_T = \sum_{j=1}^{N-1} L_j (w_j + w_{j+1}) \quad (2)$$

$$V_T = \sum_{j=1}^{N-1} L_j \left( \frac{A_j + A_{j+1}}{2} \right) \quad (3)$$

125 where  $i$  is segment index,  $w$  is width and  $\bar{h}$  with overbar is average height of a segment, the subscript  $j$  is cross section index,  $N$  is number of cross sections, and  $L_j$  is channel length of the subsection between cross sections  $j$  and  $j+1$ . The total soil loss volume over the monitoring period was then obtained by taking the difference in  $V_T$  after and before the 2013 and 2014 rainy seasons. The mass of the soil loss was calculated by multiplying the soil loss volume for each subsection by the measured average bulk density (see Sect. 3) of the soils.

130 The relationships between the change in gully headcut retreat dimensions (lateral, headward and volumetric erosion) and the controlling factors (daily rainfall, cumulative rainfall, water table, drainage area, headcut height, and soil physical properties such as bulk density and soil texture) were analysed. Additionally, empirical relationships between the volumetric retreat (V) and the lateral (W) and longitudinal (L) retreat were developed.





### 2.2.2 Gully erosion dynamics from 2005 to 2013

135 To place the short-term (2-year) gully dynamics assessment described above into a broader context, we also monitored gully dynamics over a longer, 8-year period. Following the approach of Frankl et al. (2013), we determined the surficial land loss area due to gully erosion for the Debre Mawi watershed by digitizing all gully edges in Google Earth on aerial imagery flown on 6 Mar 2005 and 23 Mar 2013. This was not only done for the 13 gullies discussed above, but for all gullies found in the imagery (Table 1). The horizontal resolution of the imagery was 50 cm.

140 Gullies were digitized by determining the location of each gully in the watershed using a hand-held GPS with a horizontal accuracy of about 3 m, after which its coordinates were imported into Google Earth to situate all gullies on the aerial imagery. The gully edges were then digitized using Google Earth's polygon mapping tool. Finally, the digitized polygons were converted to shape-file format using ESRI's ArcGIS software, which was also used to calculate the surface area and the length of each gully. Since gully volume could not be obtained from aerial measurements, it was derived from the digitized gully surface area  
 145 through a surface area to volume relationship using Eq. (4) that was obtained from the detailed measurements of the 13 gullies in 2013.

$$V_T = 0.9167 A_G^{1.184} \quad (4)$$

where  $A_G$  is the gully surface area ( $m^2$ ) obtained from Google Earth. The total gully volume for the entire watershed is then simply the sum of all individual gully volumes. The goodness of fit parameters (see Sect. 2.2.4) of Eq. (4) are  $R^2 = 0.94$ , NSE =  
 150 0.94 and PBIAS = -0.13.

Since the last aerial imagery was flown on 23 Mar 2013 (before the start of the short-term monitoring study discussed above), the surface area of the 13 gullies after the 2013 and 2014 rainy seasons was calculated using Eq. (2).

### 2.2.3 Additional measurements to determine factors controlling gully expansion

Ground water elevation is believed to be one of the most important factors for gully formation and bank instability (Tebebu et al.,  
 155 2010). Therefore, ground water depths were measured near the gully heads in the 2013 rainy season with piezometers that were installed with an auger to a maximum depth of 3 m, as the water table is usually less than 3 m from the surface during the monsoon season (Tebebu et al., 2010). Intrusion of silt and sand to the piezometer was prevented by wrapping filter fabric around the 40 cm-long screened bottom end. All piezometers were capped to prevent rainwater entry and were set in concrete to prevent any physical damage. Groundwater table elevations were read using a measuring tape twice a day: in the morning and in the  
 160 evening.

Daily precipitation was recorded using an automatic rain gauge installed in the northern portion of the watershed (Fig. 1). The drainage area (DA) above the gully heads was determined from topographic analysis in a geographical information system (GIS) using digital elevation models with 30 m resolution.

Soil bulk density (BD) samples from different soil layers along the bank profile of each gully (the number of layers varies from 3  
 165 to 5 depending on the gully depth) were collected with a 98- $cm^3$  (5 cm high) cylindrical core sampler. Soil samples were dried



for 24 h at 105 °C, and bulk density was calculated by dividing the mass of the oven-dried soil by the volume of the core. Samples were also collected from each soil layer of the gully head and sidewalls for textural analysis using the hydrometer method (Day, 1965).

### 2.2.4 Statistical analysis

170 The statistical measures used to evaluate the goodness of fit of the empirical relationships were the coefficient of determination ( $R^2$ , Eq. 5), the Nash-Sutcliffe efficiency (NSE, Eq. 6) and percent bias (PBIAS, Eq. 7):

$$R^2 = \frac{\sum_i (x_i - \bar{x})(y_i - \bar{y})}{\sqrt{\sum_i (x_i - \bar{x})^2 (y_i - \bar{y})^2}} \quad (5)$$

$$NSE = \frac{\sum_i (y_i - x_i)^2}{\sum_i (y_i - \bar{y})^2} \quad (6)$$

$$PBIAS = \frac{\sum_i (x_i - y_i)}{\sum_i y_i} * 100 \quad (7)$$

175 where  $x_i$  and  $y_i$  are the predicted and observed values, respectively, and the overbar indicates their arithmetic mean value.

$R^2$  (ranges from 0~1) describes the degree of collinearity between predicted and measured data and is sensitive to extreme values and insensitive to proportional differences. NSE is a normalized statistic that determines the relative magnitude of the residual variance (ranges from  $-\infty$ ~1). In general,  $NSE > 0$  is considered acceptable. PBIAS is the average tendency of predicted values with respect to their observed counterparts (ranges between -100 and +100). The optimal value of PBIAS is zero, with values close to

180 zero indicating accurate model simulation.

## 3 Results

### 3.1 Gully expansion rates at the watershed scale (2005 – 2013)

The expansion of the gully drainage network in the Debre Mawi watershed significantly impacted the landscape (Fig. 3, Table 1). The total length of the gully network roughly tripled in 8 years; it increased from 8.7 km in 2005 to 26 km in 2013 (Table 1).

185 During this period, gully expansion eroded 16 ha of productive lands (total gully area increased from 4.5 ha in 2005 to 20.4 ha in 2013), which equates to 2 ha yr<sup>-1</sup>. The 2013 net gully surface area represents about 3% of the total watershed area. The amount of soil loss due to the gully network expansion between 2005 and 2013 was 0.75 million tons or 155 t ha<sup>-1</sup> yr<sup>-1</sup>.



### 3.2 Expansion rates of the 13 study gullies (2005-2014)

Table 2 summarizes the increase in gully surface area of the 13 study gullies between 2005 and 2014. The combined land loss  
190 area (LLA) of the 13 gullies between 2005 and 2014 was about 3 ha (increased from 0.7 to 3.8 ha). The corresponding soil loss  
from these gullies was estimated at 0.18 million tons. This is equivalent to  $90 \text{ t ha}^{-1} \text{ yr}^{-1}$  (ranging from 9 to  $400 \text{ t ha}^{-1} \text{ yr}^{-1}$  for the  
individual gullies). During the last 2 years of the study (2013-2014), the land loss area produced by the 13 gullies increased by  
1710  $\text{m}^2$ , and about 11,200 tons of soil was eroded ranging from 18 tons for gully G12 and G13 to 6074 tons for gully G6 (Table  
2).

195 The linear expansion by headcut retreat of the 13 gullies during the 2013 and 2014 rainy seasons is presented in Fig. 4 and Table  
3. The recorded precipitation during the 2013 (44 days of rainfall) and 2014 (31 days of rainfall) monitoring periods was 917 and  
1107 mm, respectively (Fig. 4c). The headward retreat of the gully heads in 2013 ranged from 0.04 to 36 m, with a combined  
total of 103 m increase in gully length; whereas the total headward retreat in 2014 ranged from 0 to 7 m, with a total of 19 m  
(Table 3). Over these two monsoon seasons (2013-2014), about 750  $\text{m}^2$  of cultivated land was consumed by the headcut retreat of  
200 the 13 gullies. This is equivalent to 44% of the total surface area damaged by the 13 gullies during 2013-2014, and about 4.5% of  
the total surface area since their formation to 2014. During this period, the soil loss solely due to headcut migration equaled 2885  
tons, which represented 26% of the total soil loss from the 13 gullies in the same period, and about 6% starting from their  
formation to 2014 (Tables 2 and 3). The total 2-year soil loss due to headcut retreat of the individual gullies varied from 0 (G12)  
to 1260 (G5) tons (Table 3, Fig. 4). During 2013, only five of the 13 gullies (G3, G5, G6, G8 and G11) actively expanded with  
205 lateral retreat (widening) varying from 3 to 11 m and headward retreat varying from 6 to 36 m, while the other gullies remained  
fairly stable. The headcuts of gullies G3 and G8 migrated the most, 36 m and 24 m respectively, but only during the 2013 rainy  
season. However, because of the relatively shallow depth (1.4 m) and narrow width (2.6 m) of gully G3, its headcut migration  
contributed little (only 6.7%) to the total soil loss of the 13 study gullies (Fig. 4b). As shown in Fig. 4b, the four largest gullies  
(G5, G6, G8, and G11) were responsible for about 94% of the total soil loss from the 13 gullies. The relationships between the  
210 lateral and longitudinal retreat and the associated volumetric soil loss are discussed in Sect.4.

### 3.3 Factors controlling gully headcut retreat and their relationships with gully dimensions (2013)

The linear headcut retreat of the gullies varied by more than an order of magnitude and was not explicitly related to geographic  
location. This variation should therefore be explained by the differences in, among others: groundwater elevation, soil physical  
properties (texture, bulk density, and porosity), gully head height, and drainage area (Table 3) – which will be discussed in this  
215 section.

The correlation ( $R_L$ ) between the observed change in linear gully headcut retreat and the precipitation recorded during the day of  
the gully head retreat occurrence varied between -0.23 and 0.88. Some of the big gullies such as G5, G6 and G11 showed strong  
correlation ( $R_{L5} = 0.88$ ,  $P = 0.009$  and  $R_{L6} = 0.84$ ,  $P = 0.017$ ), whereas gullies with the greatest linear retreat ( $L_{G3} = 36 \text{ m}$ ,  $P = 0.55$   
and  $L_{G8} = 24 \text{ m}$ ,  $P = 0.37$ ; Fig. 4a) showed weak relationships with the daily precipitation during the retreat event ( $R_{L3} = 0.27$ ,  $P =$   
220  $0.55$  and  $R_{G8} = 0.34$ ,  $P = 0.37$ ). The probable reason for these fairly low correlation coefficients is that daily rainfall only slowly  
saturates the surrounding soil, which is partly responsible for destabilizing the gully head. Due to such slow saturation processes,  
the daily precipitation and gully head retreat may not correlate well. However, the largest retreat rates were observed on 13 Aug  
2013 (Fig. 4a) when the watershed was already saturated, which coincided with the maximum recorded daily rainfall (94 mm).



225 The low correlations indicate that headcut retreat may not always occur during or immediately following precipitation except for very large storm events such as on 13 Aug 2013.

230 The combined linear retreat (daily and cumulative) of the 13 gully heads in 2013 was compared with three different rainfall amounts: daily rainfall recorded during the retreat events, cumulative rainfall between gully head retreat events, and the cumulative rainfall since the beginning of the rainy season. The combined linear headcut retreat showed a moderate relationship with daily rainfall ( $R_L = 0.76$ ,  $p = 0.13$ ), but fairly strong relationship with cumulative rainfall between retreat events ( $R_L = 0.91$ ,  $p = 0.01$ ). Note that the relationship with daily rainfall was relatively high due to the retreat that occurred on 13 Aug 2013 during the largest rainfall event. When this rainfall was excluded from the analysis, the correlation was reduced to  $R_L = 0.035$  ( $p = 0.95$ ). The combined cumulative linear retreat was highly correlated with the cumulative rainfall since the beginning of the rainy season ( $R_L = 0.99$ ,  $p = 9.4E-05$ ). This clearly indicates that cumulative rainfall, and thus gradual wetting and saturation of the soil, is more important to headcut retreat than the wetting and surface runoff from daily rainfall or individual storms.

235 The drainage area for the studied gullies varied from 0.7 to 68 ha with an average value of 15.4 ha and standard deviation of 18.9 ha. Simple linear regression models between cumulative headcut retreat length ( $L_T$ , in m) in 2013 and drainage area (DA, in ha), and between increase in gully volume ( $V_T$ , in  $m^3$ ) in the same year and DA were:

$$L_T = 0.3DA + 3.15, (R_{L_T}^2 = 0.28, p = 0.06) \quad (8)$$

$$V_T = 11.7DA - 13.2, (R_V^2 = 0.67, p = 0.0007) \quad (9)$$

240 Fitting a power law relationship between both the linear (L) and volumetric (V) gully retreat and drainage area yielded

$$L = 0.21(DA)^{1.047}, (R^2 = 0.33) \quad (10)$$

$$V = 2.32(DA)^{1.26}, (R^2 = 0.48) \quad (11)$$

Using the above equations, the relationships between the measured L and V and predicted L and V were explained as:  $R^2 = 0.27$ ,  $NSE = 0.11$ , and  $PBIAS = 52\%$  for L; and  $R^2 = 0.69$ ,  $NSE = 0.47$ , and  $PBIAS = 49\%$  for V.

245 Figure 5 shows the water table rose above the gully bottom for all 13 gullies during the rainy season, which indicates mostly saturated gully head and bank soils. Soil saturation by a rising water table decreases the soil shear strength (Poesen, 1993; Langendoen and Simon, 2008), and therefore destabilizes banks (Simon et al., 2000; Langendoen et al., 2013). In this study, the water table measurement was carried out twice a day (i.e., in the morning and evening). The groundwater table fluctuated between these readings, but the variation was not significant ( $p = 0.98$ ). The water table decreased between morning and evening readings on average by 0.7 cm with a standard deviation of 4.0 cm, and the daily water table variation between 25 July 2013 and 18 Sep 2013 ranged from -2.5 to 13.5 cm. The power-law regression model between the minimum water table depth during the rainy season (ranging from 0.02 m at G3 to 1.5 m at G1) and the linear retreat and volumetric expansion of the 13 gullies had fairly high coefficients of determination ( $R_L^2 = 0.65$  and  $R_V^2 = 0.93$ ). The power-law equations are presented in Table 4.





By fitting a simple linear regression, the volumetric gully expansion was well explained by the height of the gully headcut ( $R_v^2 =$   
255 0.34,  $p = 0.03$ ). In contrast, the linear retreat of the gully was not well explained by the headcut height ( $R_L^2 = 0.06$ ,  $p = 0.4$ ). This  
may be because of gullies G3 and G8, which had large linear retreats but small headcut heights and therefore influenced the  
analysis. When both gullies are excluded from the analysis, the  $R_L^2$  for the linear relationship between the gully retreat and gully  
head height increased from 0.06 to 0.46 ( $p = 0.03$ ) and  $R_v^2$  increased from 0.34 to 0.57 ( $p = 0.01$ ). Lower gully head heights  
260 in gully head stability can be obtained by regrading the gully head to a lower slope.

The soil texture for all gully banks is dominated by clay-sized particles (53 to 67% with standard deviation of 4.5%), with an  
average bulk density of  $1.19 \pm 0.04 \text{ g cm}^{-3}$  (Table 3). The gully head retreat rates were only weakly correlated to these  
investigated soil properties (Table 4), probably because of the measured range in soil properties. Using linear regression models,  
the clay content did not explain the volumetric and linear headcut retreat ( $R_v^2 = 0.07$ ,  $p = 0.35$ ; and  $R_L^2 = 0.05$ ,  $p = 0.46$ ), whereas  
265 the coefficient of determination between the linear and volumetric headcut retreat and bulk density were  $R_L^2 = 0.09$  ( $p = 0.28$ ) and  
 $R_v^2 = 0.006$  ( $p = 0.81$ ), respectively. The power law relations and coefficients of determination are presented in Table 4.

## 4 Discussion

### 4.1 Effects of gully erosion on agricultural lands

It is important to know the rate of gully advancement and sediment production in order to determine the economic feasibility of  
270 soil conservation measures to reduce the loss of valuable farmland. In 2013, the net gully area in the Debre Mawi watershed was  
more than 3% of the watershed area. If additional strips of 1 m width on each side of the gully are not cultivated because of the  
gully, the total area wasted by gullies becomes 5% of the total watershed area.

All gully systems investigated in the watershed are far from being stable and have impaired more than 16 hectares of agricultural  
land within 8 years from 2005 to 2013. In fact, gully expansion in the Debre Mawi watershed is not distributed evenly over the  
275 watershed as the geology of the upper slopes of the watershed (about 50% of the watershed area) prohibits gully formation  
because it does not saturate (Tilahun et al., 2013b; Steenhuis et al., 2014; Tebebu et al., 2015). Gully expansion therefore affects  
mostly the bottomlands where soils do saturate. A loss of 2 ha of productive farmland per year is considerable for any farmer, but  
even more significant in a region with smallholder farmers. As farmers' land holding in the Ethiopian highlands is about one  
hectare of land per household (Sonneveld and Keyzer, 2003), the land loss observed between 2005 and 2013 could have provided  
280 farmland for 16 farming households in the watershed.

From our measurements, deep and wide gullies are common in the study site destroying many crop lands (Fig. 7a, b and d). In  
Europe, Poesen et al. (1996) discussed that the width-depth ratio ( $w/d$ )  $\leq 1$  represents narrow and deeper gullies which cause  
relatively little crop damage and the percentage of total soil loss consisting of fertile topsoil is significantly less compared to  
fertile topsoil losses for wide gullies. In most cases, this may not apply in wet humid areas where ground water reaches the  
285 surface. In the Debre Mawi watershed, narrow and deeper gullies expand rapidly due to the elevated water table (Tebebu et al.,  
2010) that saturates gully bank soils causing bank instability; hence significant portions of the watershed area have been lost by  
these actively expanding gullies.



The rate of soil erosion due to gully expansion in the sub-humid Debre Mawi watershed ( $155 \text{ t ha}^{-1} \text{ yr}^{-1}$ ) is more than four times as much as the upland erosion in the watershed reported by Tebebu et al. (2010) and Zegeye et al. (2010). The soil loss relative to the change in gully surface area is  $5860 \text{ t ha}^{-1} \text{ yr}^{-1}$  or  $586 \text{ kg m}^{-2} \text{ yr}^{-1}$ , which is more than 3-fold the rate reported by Daba et al. (2003) for semi-arid eastern Ethiopia over a 30-year period. The difference can likely be explained by the fact that the gullies in the sub-humid Debre Mawi watershed are much deeper than in the semi-arid area studied by Daba et al. (2003). A parallel study by Zegeye et al. (2015) in one of the studied gullies (G6) showed that more than 90% of the sediment measured at the outlet of the gully is contributed by the gully itself and the sediment concentration of the runoff increased greatly, effectively negating any positive effect of upstream erosion control practices.

#### 4.2 The relationship between gully headcut dimensions and their controlling factors

Table 5 lists the goodness-of-fit parameters (Eqs. 5-7) of the power-law and linear regression relations between the change in gully dimensions, such as the volumetric headcut erosion ( $V$ ), the top width retreat or lateral expansion ( $W$ ) and the linear headward migration of the headcut ( $L$ ). The volumetric gully expansion ( $V$ ) was strongly related to top width retreat ( $p < 0.0001$ ), whereas no significant relation was found between  $V$  and  $L$  ( $p = 0.36$ ). Similar results were obtained using a power law relationship (Table 5). Additionally, as shown in Table 1, the relative change between 2005 and 2013 in net gully area (350%) is more than 3-fold the relative change in length (109%). This indicates that sideways or lateral gully retreat is a more important mechanism of soil loss and gully expansion in the study area than linear migration of gully headcuts. Note that the  $R^2$  value can sometimes be misleading, as indicated by the other goodness-of-fit parameters assessed. For example, the  $V$ - $L$  power-law relationship for all 13 gullies has an  $R^2 = 0.83$ , which indicates a good fit between gully volume and linear gully extension. However, based on NSE and PBIAS (Table 5), the relationship between gully volumetric expansion predicted by the  $V$ - $L$  equation ( $V=18.3L^{0.91}$ ) and the observed volumetric expansion is not in the acceptable range (NSE = -0.004, PBIAS = -32.4). This indicates that assessing the quality of fits between gully expansion parameters cannot solely be done based on  $R^2$ , and that good fits also require other measures like NSE and PBIAS to be in the acceptable range.

The relations between gully dimensions were generally influenced by the lateral erosion of the large gullies (G5, G6, G8 and G11). For this study, gullies whose volumetric expansion in 2013 was greater than  $90 \text{ m}^3$  were classified as large gullies, otherwise they were classified as small gullies. To clearly identify the impact of gully dimensions ( $W$  and  $L$ ) on the direction of gully expansion, two additional analyses were conducted based on the change in gully volume (see Table 5). The volumetric erosion for small gullies is significantly related to headward retreat of gully headcuts ( $p = 2.1\text{E-}05$ ), whereas lateral expansion is more important ( $p = 0.09$ ) than linear headcut retreat ( $p = 0.56$ ) for the volumetric expansion of large and deep gullies. For large gullies the lateral erosion is mainly influenced by gravity-induced sidewall failure as the bank soil shear strength is significantly reduced by increased pore-water pressure due to elevated groundwater table.

Many studies have indicated that drainage area is a major controlling factor of gully head retreat (Poesen et al., 2003; Frankl et al., 2012). A similar result was obtained in this study. Both the linear (Eqs. 8-9) and power-law (Eqs. 10-11) regression relationships indicated that drainage area predicted the volumetric gully erosion ( $V_T$ ) better than the linear headward migration ( $L_T$ ) of the gully headcut. This suggests that the bigger the drainage area, the bigger the gully and the greater the lateral expansion by gully sidewall erosion will be, and hence the greater the sediment production will be.



Similar relationships were also developed by Vandekerckhove et al. (2003) for semi-arid southeast Spain ( $V = 0.069 DA^{0.38}$ ,  $R^2 = 0.51$ ) and Frankl et al. (2012) for the semi-arid Tigray region in northern Ethiopia ( $V = 0.53 DA^{0.31}$ ,  $R^2 = 0.27$ ). Note that in the  
325 Debre Mawi watershed, gully volume expansion is more strongly related to drainage area than in southeast Spain and the Tigray region, as the power law exponent is about four times greater in the Debre Mawi watershed; the larger the exponent, the more important the increase in  $V$  becomes with increasing drainage area (Frankl et al., 2013). The ratio of the volumetric expansion relations for Debre Mawi and the Tigray Region is  $4.4 DA^{0.95}$ , which shows a near linear increase in this ratio with drainage area. For a gully draining 10 ha of land in the Debre Mawi watershed, its volumetric expansion is on average almost 40 times greater  
330 than that of a gully draining the same area in the semi-arid Tigray Region studied by Frankl et al. (2012). The higher retreat rates in Debre Mawi are most likely due to the environment being more vulnerable to soil erosion because of the occurrence of rainstorms with high event rainfall amounts during the short rainy season (see Sect. 3.3). In addition, the depth of the erodible Vertisols soils (up to 10 m) overlaying the bedrock combined with the high level of soil saturation could have increased the potential for erosion in the study area compared to the much drier semi-arid regions of Tigray and southeast Spain where soils  
335 were also thinner. In addition, Frankl et al. (2013) stated that the establishment of relationships like Eqs. 10-11, are necessarily region-specific and only representative for similar environmental settings (climate, topography, lithology, soil, vegetation).

#### 4.3 Viable gully erosion control measures for the sub-humid Ethiopian highlands

Gully erosion can rapidly change landscapes, see for instance Fig. 6. Gully G6 has expanded laterally into cultivated land through erosion of the right bank (west bank), whereas lateral erosion of the left bank, located on grass land, was rather limited.  
340 This decreased gully expansion on the grassed bank may be due to the effect of the grasses either in terms of increasing the topsoil shear strength (De Baets et al, 2008) or drying out the soil through evapotranspiration (Pollen and Simon, 2005) and thereby reducing soil saturation. Also, grasses could modify overland flow and infiltration patterns, and therefore affect subsurface drainage. Gully G11 was surrounded by cultivated land on both sides, and hence expanded laterally through erosion of both left (south) and right (north) banks. In 2012 the land adjacent to the left bank was planted with eucalyptus trees to halt  
345 erosion. In 2013, erosion of this left (south) bank was significantly reduced, and gully development then occurred through extension in northeastern direction and lateral expansion in northern direction instead (see Fig. 6). The lesson learned from these two gullies (G6 and G11) is that vegetation may reduce gully expansion by increasing soil shear strength through their roots, slowing down the storm runoff and trapping sediments which was also observed by for example Gyssels and Poesen (2003) and De Baets et al. (2006). Therefore, planting suitable species on the gully face and around the boundary may reduce or slow down  
350 bank failure and water-induced erosion especially for fairly deep gullies.

Our monitoring data also contained valuable information regarding the effectiveness of soil and water conservation measures such as soil bunds that were extensively installed across the upper portion of the catchment since 2011. The measures, aimed to reduce the development of rills and gullies in the area, were implemented on saturated Vertisol areas, but have rather led to gully initiation and development (see Fig. 7f; Steenhuis et al., 2014, Dagnew et al., 2015). These soil and water conservation measures  
355 appear to be ineffective on these locations as they cannot reduce or stop upward headcut migration of gullies downslope, which requires alternative, structural measures. Similarly, diversion waterways have been tested in the watershed to arrest gully heads, but have produced new gully branches (Zegeye, et al., 2014). Our data therefore supports the findings of Dagnew et al. (2014, 2015), which indicate that the extensive implementation of soil and water conservation measures on periodically saturated Vertisols areas may have exacerbated, rather than mitigated gully formation and expansion.



360 In the bottomlands of the watershed where Vertisols dominate, gully formation was severe due to alternate swelling and  
shrinking of expanding clays resulting in deep cracks in the dry season (Fig. 7c). As was previously observed by Frankl et al.  
(2012), the shrink-swell behaviour of Vertisols eventually developed into pipes (Fig. 7d) and contributed to gully development.  
Though pipes contribute to gully formation, we observed in this study that they are also important to drain excess subsurface  
water near the gully banks, thereby potentially mitigating gully expansion. For example, soil pipes in the heads of gullies G7 and  
365 G13 drained the elevated ground water table resulting in only minor headcut retreat (Table 3). This implies that gully expansion  
rates could be reduced by controlling the water table and therefore the pore-water pressures in the gully head. For example, drop  
pipes are a common practice in the United States (Field Office Technical Guide standard 587; NRCS, 2015) to control  
groundwater and surface water level to halt erosion of gully heads up to 15 m in height, but can be very costly (>\$50,000 each).  
Moreover, most of the Debre Mawi watershed gullies are deep gullies (up to 7 m) that are therefore susceptible to gravity-  
370 induced bank collapse. Regrading the gully head and bank slopes decreases their weight and reduces the probability of bank  
failure (Langendoen et al., 2014).

In the semi-arid Tigray region of northern Ethiopia, Frankl et al. (2012) recommended the application of a subsurface geo-  
membrane (vertical dam) at the gully head to increase groundwater levels and subsequently decrease soil cracking and soil  
piping. However, this may not be effective in the (sub) humid region of Ethiopian highlands as we have shown that elevated  
375 groundwater tables increases the rate of gully expansion (Table 4, Fig. 7f). Therefore, gully mitigation measures in the sub-  
humid Ethiopian highlands and similar climate types should target to reduce soil water content.

## 5 Conclusions

Field observations in the Debre Mawi watershed indicate that permanent valley-bottom gully drainage networks and in particular  
gully bank and headcut erosion are important erosion processes severely impacting the productive farmlands. Gully deepening  
380 and widening in the area have decreased the accessibility to farmland and increased socioeconomic problems such as 1)  
destruction of landscape revegetation efforts (trees have fallen into the gullies) and other natural resources; 2) lowered local  
groundwater tables causing dried up wells and reduced crop yields; and 3) damaged roads and settlements. Sediment  
measurements in one of the studied gullies (G6) showed that the sediment concentration of the runoff increased greatly,  
effectively negating any positive effect of upstream erosion control practices.

385 Gully mapping and monitoring indicated that the continued gully incision, lateral expansion and headward extension are  
governed by the collapse of the gully head and sidewalls, and the subsequent removal of the failed materials by flowing water  
(Figs. 6 and 7). About 5% of the watershed area has been impaired by the expanding gully network. The gully expansion rate at  
the watershed scale between 2005 and 2013 was  $155 \text{ t ha}^{-1} \text{ yr}^{-1}$  (Table 1). The headcut migration of the 13 gullies during the 2013  
rainy season varied significantly from 0.04 to 36 m  $\text{yr}^{-1}$  (Table 3 and Fig.4).

390 Understanding the controlling factors of gully head migration and lateral expansion of gullies is crucial to design appropriate  
gully control measures. Retreat rates depended most strongly on groundwater table elevation (Table 4). The elevated water tables  
saturate the soils surrounding the gullies thereby reducing the soil erosion resistance. Elevated groundwater elevations may also  
lead to seepage-induced erosion. Additionally, the gully head depth and the drainage area, which is representative of surface  
runoff magnitude, were other factors controlling gully erosion in the Debre Mawi watershed (Table 4). Therefore, conservation  
395 practices that address these parameters may be most effective.



The lateral retreat for deep gullies contributes the most to the volumetric gully erosion in the Debre Mawi watershed (Table 5). Therefore, regrading the gully head and bank slopes could reduce the occurrence of gravity-induced bank collapse for deep gullies. Studies need to be designed to evaluate the effects of controlling groundwater movement, for example by subsurface drainage, on the stability of Vertisols. Vegetation may play a vital role in reducing soil water and increasing soil shear strength.

400 The planting of an assemblage of suitable, native plant species (both herbaceous and woody) is being tested in the watershed.

#### Author contributions

A. Zegeye, E. Langendoen, T. Steenhuis and S. Tilahun designed the experiments. A. Zegeye carried them out. A. Zegeye, E. Langendoen, F. Zimale and D. Dagneu analysed and interpreted the data. A. Zegeye, E. Langendoen, T. Steenhuis, C. Stoof, C. Guzman, B. Yitaferu and S. Tilahun supervised the research and cooperated on writing (editing, commenting, developing, formatting etc.) the manuscript.

405

#### Data availability

The supplementary data (excel, movie) for this manuscript are available online in: **TIB AV-Portal** Data Repository. doi: <http://dx.doi.org/10.5446/18056>

#### Acknowledgments

410 This research was supported financially by The Norman E. Borlaug Leadership Enhancement in Agriculture Program (Borlaug LEAP-016258-82), International Foundation for Science (IFS-W/5407-1), Cornell University (Presbyterian Church, Hudson H. Lyon research fund and PEER Science Program of USAID (ID-OAA-A-11-00012).

#### References

415 Abiy, A.Z.: Geological controls in the formations and expansions of gullies over hillslope hydrological processes in the highlands of Ethiopia, Northern Blue Nile Region, MPS Thesis, Cornell University, NY, US, 2009.

Avni, Y.: Gully incision as a key factor in desertification in an arid environment, the Negev Highlands, Israel, *Catena*, 63, 185-220, 2005.

Begin, Z.B., Meyer, D.F., and Schumm, S.A.: Knick point migration due to base level lowering, *American Society of Civil Engineers Journal of Waterways Port Coastal and Ocean Division*, 106, 369–388, 1980.

420 Billi, P. and Dramis, F.: Geomorphological investigation on gully erosion in the Rift Valley and the northern highlands of Ethiopia, *Catena*, 50, 353–368, 2003.

Bayabil, H. K., Tilahun, S.A., Collick, A. S., and Steenhuis, T. S.: Are runoff processes ecologically or topographically driven in the Ethiopian highlands? The case of the Maybar watershed, *Ecohydrol*, 3, 457-466, 2010.

425 Daba, S., Rieger, W. and Strauss, P.: Assessment of gully erosion in eastern Ethiopia using photogrammetric techniques, *Catena*, 50, 273-291, 2003.

Day, P.R.: Particle fractionation and particle-size analysis, in: *Methods of soil analysis, Part 1*, C.A. Black et al (ed.), *Agronomy*, 9, 545-567, 1965.

De Baets, S., Poesen, J., Gysels, G., and Knapen, A.: Effects of grass roots on the erodibility of top soils during concentrated flow, *Geomorphology*, 76(1), 54-67, 2006.



- 430 De Baets, S., Poesen, J., Reubens, B., Wemans, K., De Baerdemaeker, J., and Muys, B.: Root tensile strength and root distribution of typical Mediterranean plant species and their contribution to soil shear strength, *Plant and Soil*, 305(1-2), 207-226, 2008.
- Dagneu, D. C., Tilahun, S.A., Guzman, C.D., Ayana, E.K., Zegeye, A. D., Tebebu, T.Y., Mehari, M., Getaneh, M., Abate, S., and Steenhuis, T.S.: Hydrologic and sediment response to the large scale SWC implementation in the sub-humid Ethiopia, in: *Proceedings of the second International Conference on the Advancements in Science and Technology (ICAST)*, Bahir Dar University, 230-237, 2014.
- 435 Dagneu, D. C., Guzman, C. D., Zegeye, A. D., Tebebu, T.Y., Menelik, G., Solomon, A., Zemale, F.A., Ayana, E.K., Tilahun, S. A., and Steenhuis, T. S.: Impact of conservation practices on runoff and soil loss in the sub-humid Ethiopian Highlands: The Debre Mawi watershed, *J.Hydrol.Hydromech.*, 63, doi:10.1515-johh-2015-0021, 2015.
- 440 Engda, T. A., Bayabil, H. K., Legesse, E. S., Ayana, E. K., Tilahun, S. A., Collick, A. S., Easton, Z. M., Rimmer, A., Awulachew, S. B., and Steenhuis, T. S.: Watershed hydrology of the (semi) humid Ethiopian highlands, in: *Nile River basin: Hydrology, Climate, and Land Use*, A. Melesse, Springer Science, New York, 145-162, 2011.
- Frankl, A., Poesen, J., Deckers, J., Haile, M., and Nyssen, J.: Gully head retreat rates in the semi-arid highlands of Northern Ethiopia, *Geomorphology*, 173, 185-195, 2012.
- 445 Frankl, A., Zwertvaegher, A., Poesen, J., and Nyssen, J.: Transferring Google Earth Observations to GIS-software: example from gully erosion study, *International Journal of Digital Earth*, 6, 196-201, doi: 10.1080/17538947.2012.744777, 2013.
- Gyssels, G. and Poesen, J.: The importance of plant root characteristics in controlling concentrated flow erosion rates, *Earth Surf. Process. Landforms*, 28, 371-384, 2003.
- IUSS Working Group WRB.: World Reference Base for Soil Resources 2014, update 2015, International soil classification system for naming soils and creating legends for soil maps, World Soil Resources Reports No. 106, FAO, Rome, 2015.
- 450 Jones J. A. A.: The effects of soil piping on contributing areas and erosion patterns, *Earth Surface Processes and Landforms*, 12, 229-248, DOI: 10.1002/esp.3290120303, 1987.
- Lamb, D., Erskine, P. D., and Parrotta, J. A.: Restoration of degraded tropical forest landscapes, *Science*, 310, 1628-1632, 2005.
- 455 Lanckriet, S., Frankl, A., Mesfin, G., Descheemaeker, K., and Nyssen, J.: Gully cut-and-fill cycles as related to agro-management: a historical curve number simulation in the Tigray Highlands, *Earth Surf. Process. Landforms*, 40(6), 796-808, doi: 10.1002/esp.3687, 2015.
- Langendoen, E. J. and Simon, A.: Modeling the evolution of incised streams, II: Streambank erosion, *Journal of Hydraulic Engineering*, 134, 905-915, 2008.
- 460 Langendoen, E. J., Tebebu, T. Y., Steenhuis, T. S., and Tilahun, S. A.: Assessing gully widening and its control in the Debre-Mawi Watershed, northern Ethiopia, in: *Proceedings of the first International Conference on Science and Technology towards the Development of East Africa (ICST)*, Bahir Dar, Ethiopia, 214-222, 2013
- Langendoen, E.J., Zegeye, A.D., Tebebu, T.Y., Steenhuis, T.S., Ayele, G.K., Tilahun, S.A., and Ayana, E.K.: Using computer models to design gully erosion control structures for humid northern Ethiopia, in: *proceedings of Hydro-Engineering for Environmental Challenges, 11<sup>th</sup> International Conference on Hydrosience & Engineering (ICHE 2014)*, Hamburg, 28 Sep - 02 October 2014, ISBN 978-3-939230-32-8, 2014.
- 465 Mekonnen, M. and Melesse, A.M.: Soil erosion mapping and hot spot area identification using GIS and remote sensing in the northwest Ethiopian Highlands, near Lake Tana, in: *Nile River basin: Hydrology, climate and water use*, Springer Science, New York, 207-224, doi: 10.1007/978-94-007-0689-7\_10, 2011.
- 470 Muñoz-Robles, C., Reid, N., Frazier, P., Tighe, M., Briggs, S. V., and Wilson, B.: Factors related to gully erosion in woody encroachment in South-Eastern Australia, *Catena*, 83, 148-157, 2010.



- Nyssen, J., Poesen, J., Moeyersons, J., Luyten, E., Veyret, P.M., Deckers, J., Haile, M., and Govers, G.: Impact of road building on gully erosion risk: a case study from the northern Ethiopian Highlands, *Earth Surf. Process Landforms*, 27, 1267–1283, 2002.
- 475 Nyssen, J., Veyret-Picot, M., Poesen, J., Moeyersons, J., Haile, M., Deckers, J., and Govers, G.: The effectiveness of loose rock check dams for gully control in Tigray, northern Ethiopia, *Soil Use and Management*, 20, 55–64, doi: 10.1079/SUM2003223, 2004a.
- Nyssen, J., Poesen, J., Moeyersons, J., Deckers, J., Haile, M., and Lang, A.: Human impact on the environment in the Ethiopian and Eritrean Highlands: A state of the Art, *Earth-Science Reviews*, 64, 273–320, 2004b.
- 480 Nyssen, J., Poesen, J., Veyret-Picot, M., Moeyersons, J., Haile, M., Deckers, J., Dewit, J., Naudts, J., Teka, K., and Govers, G.: Assessment of gully erosion rates through interviews and measurements: a case study from northern Ethiopia, *Earth Surf. Process. Landforms* 31, 167–185, doi: 10.1002/esp.1317, 2006.
- Nyssen, J., Poesen, J., Moeyersons, J., Haile, M., and Deckers, J.: Dynamics of soil erosion rates and controlling factors in the Northern Ethiopian Highlands-Towards a Sediment Budget, *Earth Surf. Process. Landforms*, 33, 695–711, 2008.
- 485 Nyssen, J., Clymans, W., Poesen, J., Vandecasteele, I., De Baets, S., Haregeweyn, N., Naudts, J., Hadera, A., Moeyersons, J., Haile, M., and Deckers, J.: How soil conservation affects the catchment sediment budget – a comprehensive study in the north Ethiopian highlands, *Earth Surf. Process. Landforms* 34, 1216–1233, 2009.
- Oostwoud Wijdenes, D.G. and Bryan, R.B.: Gully-head erosion processes on a semi-arid valley floor in Kenya: a case study into temporal variation and sediment budgeting, *Earth Surf. Process. Landforms* 26, 911–933, doi: 10.1002/esp.225, 2001.
- 490 Poesen, J.: Gully typology and gully control measures in the European loess belt, in: *Farm Land Erosion in Temperate Plains Environment and Hills*, Wicherek, S., Elsevier, Amsterdam, 221– 239, 1993.
- Poesen, J., Nachtergaele, J., Verstraeten, G., and Valentin, C.: Gully erosion and environmental change: Importance and research needs, *Catena*, 50, 91–133, 1996.
- Pollen, N. and Simon, A.: Estimating the mechanical effects of riparian vegetation on stream bank stability using a fiber bundle model, *Water Resources Research*, 41, W07025, doi: 10.1029/2004WR003801, 2005.
- 495 Simon, A., Curini, A., Darby, S. E., and Langendoen, E. J.: Bank and near-bank processes in an incised channel, *Geomorphology*, 35, 193–217, 2000.
- Simon, A., Pollen-Bankhead, N., and Thomas, R.E.: Development and application of a deterministic bank stability and toe erosion model for stream restoration, in: *Stream Restoration in Dynamic Fluvial Systems: Scientific Approaches, Analyses, and Tools*, AGU, Washington, DC, A. Simon, S.J. Bennett and J.M. Castro, 453–474, 2011.
- 500 Sonneveld, B. and Keyzer, M.: Land under pressure: Soil conservation concerns and opportunities for Ethiopia, *Land Degradation & Development*, 14, 5–23, 2003.
- Steenhuis, T. S., Tebebu, T.Y., Ayele, G. K., Guzman, C.D., Bayabil, H.K., Zegeye, A.D., Mogus, M., Dagnew, D.C., Stoof, C.R., and Tilahun, S.A.: Prioritizing landscape interventions in the Ethiopian highlands, *Geophysical Research Abstracts*, EGU General Assembly, May 2014, 16, EGU2014-16338, 2014.
- 505 Tamene, L., Park, S.J., Dikau, R., and Vlek, P.L.G.: Analysis of factors determining sediment yield variability in the highlands of northern Ethiopia, *Geomorphology*, 76, 76– 91, 2006.
- Tebebu, T. Y., Abiy, A. Z., Zegeye, A. D., Dahlke, H. E., Easton, Z. M., Tilahun, S. A. Collick, A. S. Kidnau, S., Moges, S., Dadgari, F., and Steenhuis, T. S.: Surface and subsurface flow effect on permanent gully formation and upland erosion near Lake Tana in the northern highlands of Ethiopia, *Hydrol. Earth Syst. Sci.*, 14, 2207–2217, 2010.



- 510 Tebebu, T.Y., Zegeye, A. D., Langendoen, E. J., Ayele, G. K., Tilahun, S. A., Ayala, E. K., and Steenhuis, T.S.: Arresting gully formation in the Ethiopian Highlands, in: proceeding of rainwater management for resilient livelihoods in Ethiopia, ILRI, W. Mekuria, Nairobi, Kenya, 196–203, 2014.
- Tebebu, T.Y., Steenhuis, T.S., Dagnew, D.C., Guzman, C.D., Bayabil ,H.K., Zegeye, A.D., Collick, A.S., Langan, S., McAllister, C., Langendoen, E.J., Yitaferu, B., and Tilahun, S.A.: Improving efficacy of landscape interventions in the (sub) humid Ethiopian highlands by improved understanding of runoff processes, *Front. Earth Sci.* 3, 49, doi: 10.3389/feart.2015.00049, 2015.
- 515
- Thorne, C. R.: Effects of Vegetation on Riverbank Erosion and Stability, *Vegetation and Erosion*, 125-144, <http://www.lsln.net.au/jspui/handle/1/4071>, 1990.
- Tilahun, S. A., Guzman, C. D., Zegeye, A. D., Engda, T. A., Collick, A. S., Rimmer, A., and Steenhuis, T. S.: An efficient semi-distributed hillslope erosion model for the subhumid Ethiopian Highlands, *Hydrol. Earth Syst. Sci.*, 17, 1051-1063, doi:10.5194/hess-17-1051-2013, 2013a.
- 520
- Tilahun, S. A., Mukundan, R., Demisse, B. A., Engda, T. A., Guzman, C. D., Tarakegn, B. C., Easton, Z. M., Collick, A. S., Zegeye, A. D., Schneiderman, E. M., Parlange, J.Y., and Steenhuis, T. S.: A saturation excess erosion model, *American Society of Agricultural and Biological Engineers*, 56(2), 681-695, 2013b, doi: 10.13031/2013.42675, 2013b.
- 525
- Valentin, C., Poesen, J., and Li, Y.: Gully Erosion: Impacts, Factors and Control, *Catena*, 63, 132-153, 2005.
- Vandekerckhove, L., Poesen, J., and Govers, G.: Medium-term gully headcut retreat rates in southeast Spain determined from aerial photographs and ground measurements, *Catena*, 50, 329-352, 2003.
- Zegeye, A. D., Steenhuis, T. S., Blake, R. W., Kidnau, S., Collick, A. S., and Dadgari, F.: Assessment of soil erosion processes and farmer perception of land conservation in Debre Mewi watershed near Lake Tana, Ethiopia, *Ecohydrology & Hydrobiology*, 10, 297-306, 2010.
- 530
- Zegeye, A.D., Amare, S.D., Tilahun, S.A., Langendoen, E.J., Dagnew, D. C., Guzman, C.D., Tebebu, T. Y., and Steenhuis, T.S.: Gully development processes in the Ethiopian highlands, in: Proceedings of the second International Conference on the Advancements in Science and Technology (ICAST), Bahir Dar University, 220-229, 2014.
- Zegeye, A.D., Amare, S.D., Tilahun, S.A., Dagnew, D.C., Addisie, M.B., Ayele, G.K., Guzman, C.D., Langendoen, E.J., Tebebu, T. Y., Kassie, T.A., Tilahun, S.A., and Steenhuis, T.S.: Sediment production from gully erosion in the (sub) humid Ethiopian highlands: The Debre Mawi watershed, TROPILAKES general assembly, Bahir Dar, Ethiopia, 23-29 September 2015.
- 535





545

**Tables**

Table 1. Gully expansion and the associated soil loss between 2005 and 2013 in the Debre Mawi watershed, Ethiopia.

Year	Total length of gullies (km)	Gully density (km/km <sup>2</sup> )	Total gully area (ha)	Percentage of land covered by gullies (%)	Total gully volume (m <sup>3</sup> )	Soil loss (tons)
2005	8.7	1.5	4.5	0.74	171,376	207,365
2013	26	4.3	20.4	3.40	792,622	959,072
Absolute change	17.3	2.8	16	2.66	621,246	751,707
Relative change (%)	200	187	350	360	360	360

550

555

560



Table 2. Increase in surface area and corresponding soil loss of the 13 study gullies in the Debre Mawi watershed, Ethiopia, between 2005 and 2014. Surface area was obtained by digitizing the gully edges on aerial imagery. The ‘manual measurement’ values are calculated using Eq. (2).

Gully name	Gully surface area (m <sup>2</sup> )						Change (m <sup>2</sup> )	Change (m <sup>3</sup> )	Soil loss, 2005-2014 (t)	Soil loss in 2013 and 2014 (t)
	From aerial image			Manual measurement						
	3/6/2005	5/4/2011	4/3/2012	3/23/2013	9/18/2013	10/18/2014				
G1	140	265	390	420	440	440	300	918	1156	83
G2	785	2700	3330	3560	3573	3575	2790	12314	14654	87
G3	210	530	600	1430	1460	1460	1250	4600	5244	142
G4	230	400	450	750	780	785	555	1880	2199	151
G5	2820	10700	11500	13700	13960	14050	11230	63507	73668	2548
G6	1720	6770	8100	9110	9580	9960	8240	43468	53031	6075
G7	110	365	365	385	390	390	280	832	957	19
G8	365	2140	2860	3740	3850	3890	3525	15329	18242	884
G9	40	730	1050	1120	1150	1180	1140	3903	4644	283
G10	50	190	400	455	460	460	410	1209	1511	21
G11	152	600	750	890	1020	1070	918	3189	3922	853
G12	50	170	240	255	255	260	210	569	694	18
G13	199	240	345	365	370	370	171	524	597	18
Total	6800	25800	30380	36180	37288	37890	31019	152241	180520	11183

570

575

580



585 Table 3. List of soil and gully topographic factors for the 13 study gully heads in the Debre Mawi watershed, Ethiopia, and observed gully head erosion during the 2013 and 2014 rainy seasons (between July and September). BD is bulk density and DA is drainage area.

Gully name	Minimum water table depth (m)	Clay Content (%)	BD (g cm <sup>-3</sup> )	Mean headcut depth (m)	DA (ha)	Linear retreat (m)		Volumetric retreat (m <sup>3</sup> )	
						2013	2014	2013	2014
G1	1.5	58	1.26	3.9	12.8	0.4	0	8.9	0.0
G2	1.22	53	1.19	2.2	13	2.2	0.5	30.6	1.8
G3	0.02	55	1.14	1.4	41.6	36	0	146	0.0
G4	0.59	59	1.17	2	1.7	7	5	40.3	20.8
G5	0.05	60	1.16	4.8	68	10	3	956	131.2
G6	0.075	67	1.22	4.6	13.3	12	0	413	0.0
G7	1.56	59	1.15	1.4	0.7	0.2	0	0.8	0.0
G8	0.065	56	1.19	3.3	17.4	24.4	7	195	41.6
G9	1.2	59	1.19	3.4	6.8	3.8	1.65	48.9	24.4
G10	1.44	55	1.25	2.5	6.5	0.7	0	6	0.0
G11	0.45	66	1.23	4.2	9.2	6.2	1.4	319	36.5
G12	1.38	66	1.22	1.9	4.1	0	0	0	0.0
G13	1.65	60	1.14	1.3	4.8	0	0.8	0	2.5
Av/Tot	0.86	59	1.19	2.84	200	103	19	2165	259

590

595

600

605



610 Table 4. Power-law regression equations of the longitudinal headcut retreat,  $L$ , and the volumetric gully expansion,  $V$ , with the controlling factors,  $X$ :  $L = aX^b$  and  $V = aX^b$ . The goodness of the fit is represented by the coefficient of determination,  $R^2$ .

Controlling factors (X)	$L = aX^b$		$V = aX^b$		$R^2$	
	a	b	a	b	L	V
Water table	0.75	1.12	13.07	1.102	0.65	0.93
Drainage area	0.21	1.047	2.32	1.26	0.33	0.47
Headcut depth	0.0008	2.14	0.0003	3.24	0.208	0.47
Clay content	110.7	-1.05	0.000	4.04	0.023	0.018
Bulk density	5.73	-6.2	26.8	1.28	0.008	0.0004

615

620

625

630

635

640



Table 5. Relations of the volumetric gully headcut erosion (V) with the headward migration length (L) and the lateral erosion (W) during the 2013 rainy season for the 13 studied gullies in the Debre Mawi watershed, Ethiopia. The observed gully volumes were fitted as functions of L or W using power-law and linear regression models. V-W or V-L refers to V as a function of W or L, respectively. The bolded values indicate power law equations (V-W or V-L) that explain the measured increase in gully volume well.

Analyzed gullies	Relationship	Power law relationship ( $V = a x^b$ )			Predicted versus measured		
		a	b	R <sup>2</sup>	R <sup>2</sup>	NSE	PBIAS
All 13 gullies	<b>V -W</b>	14.7	1.65	0.86	<b>0.90</b>	<b>0.89</b>	<b>12.8</b>
	V-L	18.3	0.91	0.83	0.83	-0.004	-32.4
9 small gullies	V -W	12.2	1.39	0.73	0.30	0.26	19.7
	<b>V-L</b>	12.3	0.73	0.93	<b>0.97</b>	<b>0.94</b>	<b>-3.2</b>
4 large gullies*	<b>V -W</b>	70	0.99	0.83	<b>0.82</b>	<b>0.8</b>	<b>3.8</b>
	V-L	1480	-0.54	0.2	0.06	-0.006	13.4

		Linear regression ( $V = mx + n$ )				
		m	n	R <sup>2</sup>	Sig. at p = 5%	Predicted versus measured (R <sup>2</sup> )
All 13 gullies	<b>V -W</b>	74.7	-62.8	0.85	6.2E-06	<b>0.85</b>
	V-L	6.9	112	0.07	0.36	0.09
9 small gullies	V -W	19.6	2.84	0.37	0.08	0.37
	<b>V-L</b>	3.87	10.2	0.94	2.1E-05	<b>0.94</b>
4 large gullies	<b>V -W</b>	78.5	-51	0.83	0.09	<b>0.83</b>
	V-L	-18.8	718	0.2	0.56	0.19

\*Large gullies are G5, G6, G8 and G11. The other gullies are considered to be small gullies for this analysis.  $x$  represents  $W$  or  $L$ ;  $a$ ,  $b$ ,  $m$ , and  $n$  are constants.

650

655

660

**Figure captions**



665 Fig. 1. Location of the Debre Mawi watershed within the Blue Nile River basin, Ethiopia (top figures). The watershed map  
(bottom) shows the drainage network, the 13 studied gullies (indicated by the labels beginning with the letter G), and their  
drainage areas. RG marks the location of automatic rain gauge.

Fig. 2. (a) Cross section segmentation methodology to determine the cross-sectional area of the gullies. (b) Measured profiles of  
a cross-section located on gully G6 during the 2013 rainy season, showing the lateral and downward expansion of the gully.

670 Fig. 3. Gully drainage network expansion in the Debre Mawi watershed, Ethiopia, between 2005 and 2013. Lines represent gully  
edges digitized from aerial imagery.

Fig. 4. The observed expansion of the 13 study gullies in the Debre Mawi watershed (see Fig. 1 for gully location): (a)  
cumulative headcut retreat and rainfall during the 2013 rainy season, (b) increase in gully surface area (bars) and volume (lines)  
during the 2013 and 2014 rainy seasons, and (c) increase in the combined gully surface area and the total summer rainfall (RF)

675 between 2011 and 2014.

Fig. 5. Comparison of minimum groundwater table depth (line) and gully headcut depth (bars) for the 13 study gullies in the  
Debre Mawi watershed, Ethiopia for the 2013 rainy season.

Fig. 6. Examples of gully expansion in the Debre Mawi watershed: (Top photo) expansion of gullies G8 and G11 during the  
2013 rainy season, the trees which were upstream of the two gullies felled down in to the gullies; (Bottom image) expansion of  
680 gullies G6 and G11 between 2005 and 2013.

Fig. 7. Examples of gully expansion controlled by: (a, b) bank geometry (height and slope), (c) tension cracks, (d) land slide, (e)  
soil pipes and (f) saturated vertisols (gully development on conservation ditches, narrow ditch upstream of gully headcut) in the  
sub-humid Debre Mawi (a,b,d, and f), Mota (c) and Geregera (e) watersheds (pictures taken in 2013).

685

690

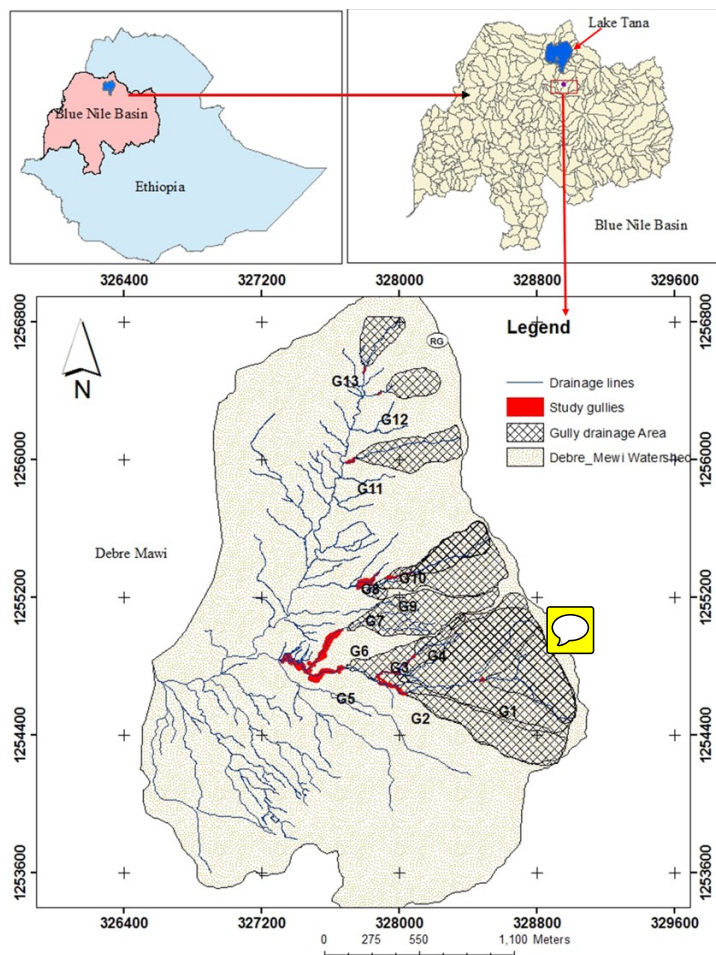
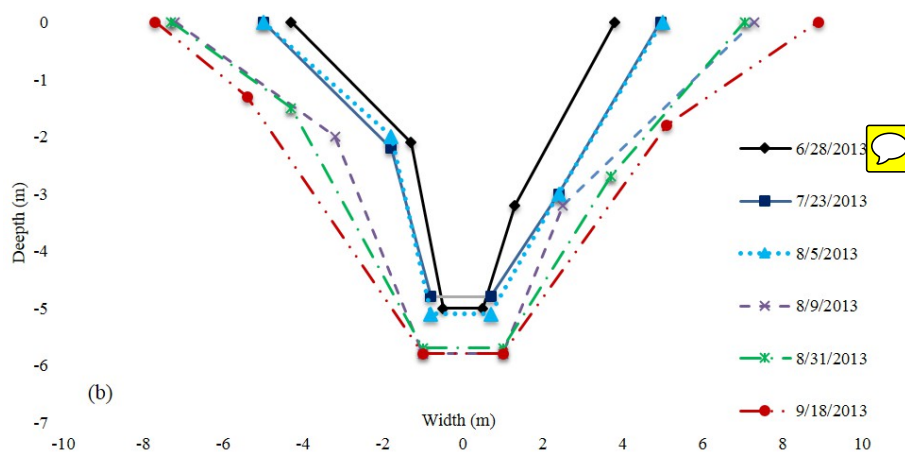


Fig. 1. Location of the Debre Mawi watershed within the Blue Nile River basin, Ethiopia (top figures). The watershed map (bottom) shows the drainage network, the 13 studied gullies (indicated by the labels beginning with the letter G), and their drainage areas. RG marks the location of automatic rain gauge.

700



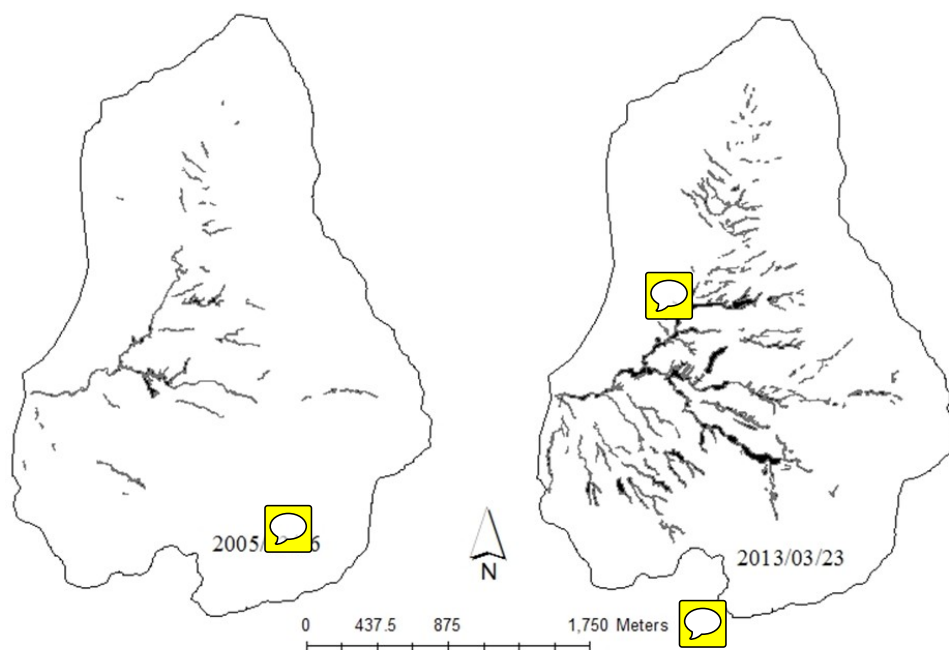
705 Fig. 2. (a) Cross section segmentation methodology to determine the cross-sectional area of the gullies. (b) Measured profiles of a cross-section located on gully G6 during the 2013 rainy season, showing the lateral and downward expansion of the gully.

710





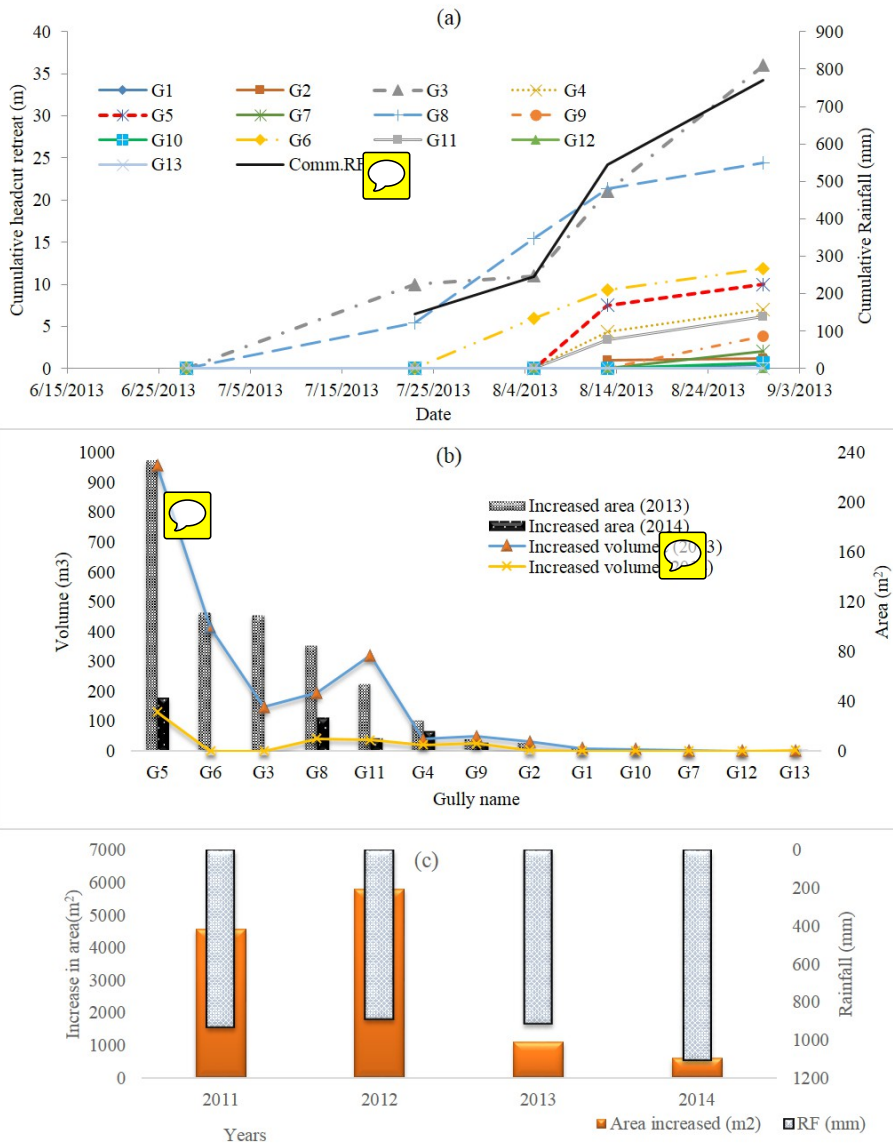
715



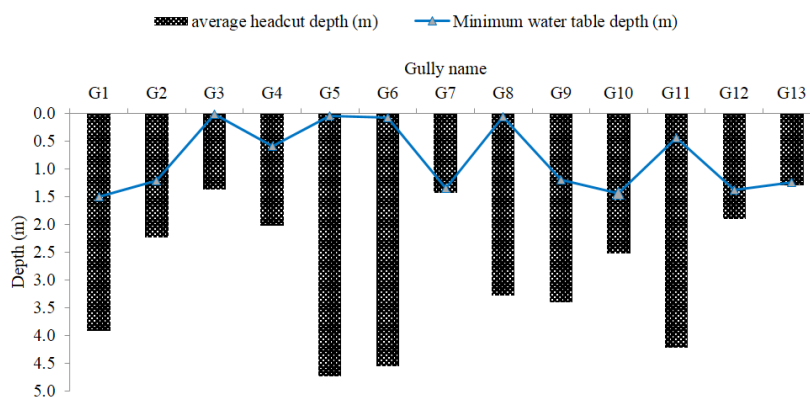
720 Fig. 3. Gully drainage network expansion in the Debre Mawi watershed, Ethiopia, between 2005 and 2013. Lines represent gully  
edges digitized from aerial imagery.

725

730



735 Fig. 4. The observed expansion of the 13 study gullies in the Debre Mawi watershed (see Fig. 1 for gully location): (a) cumulative headcut retreat and rainfall during the 2013 rainy season, (b) increase in gully surface area (bars) and volume (lines) during the 2013 and 2014 rainy seasons, and (c) increase in the combined gully surface area and the total summer rainfall (RF) between 2011 and 2014



745

Fig. 5. Comparison of minimum groundwater table depth (line) and gully headcut depth (bars) for the 13 study gullies in the Debre Mawi watershed, Ethiopia for the 2013 rainy season.

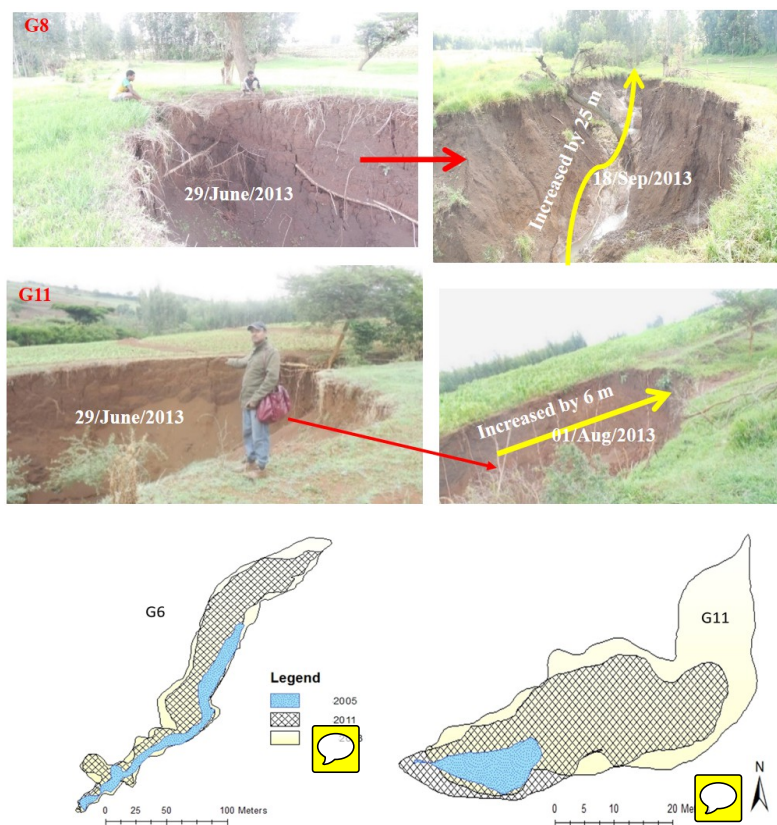


Fig. 6. Examples of gully expansion in the Debre Mawi watershed: (Top photo) expansion of gullies G8 and G11 during the 2013 rainy season, the trees which were upstream of the two gullies felled down in to the gullies; (Bottom image) expansion of gullies G6 and G11 between 2005 and 2013.



Fig. 7. Examples of gully expansion controlled by: (a, b) bank geometry (height and slope), (c) tension cracks, (d) land slide, (e) soil pipes and (f) saturated vertisols (gully development on conservation ditches, narrow ditch upstream of gully headcut) in the sub-humid Debre Mawi (a,b,d, and f), Mota (c) and Geregera (e) watersheds (pictures taken in 2013).