

Interactive  
Comment

***Interactive comment on “Depth distribution of radiocesium in Fukushima paddy fields and implications for ongoing decontamination works” by H. Lepage et al.***

**H. Lepage et al.**

hugo.lepage@lsce.ipsl.fr

Received and published: 5 December 2014

Dear Referee,

Please find enclosed as a supplement (soil-2014-27-supplement.pdf) my response to your comments formatted in a table to facilitate the reading. I hope this will not bother you.

Sincerely

Hugo Lepage

Full Screen / Esc

Printer-friendly Version

Interactive Discussion

Discussion Paper



Please also note the supplement to this comment:  
<http://www.soil-discuss.net/1/C274/2014/soild-1-C274-2014-supplement.pdf>

---

Interactive comment on SOIL Discuss., 1, 401, 2014.

## SOIL

1, C274–C277, 2014

---

Interactive  
Comment

Full Screen / Esc

Printer-friendly Version

Interactive Discussion

Discussion Paper

C275

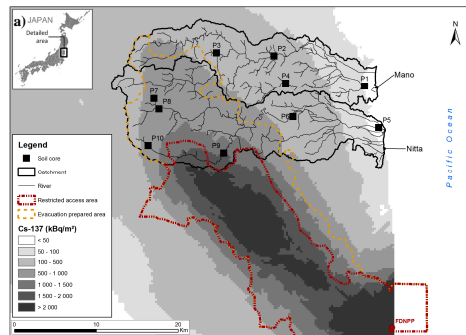


# SOIL

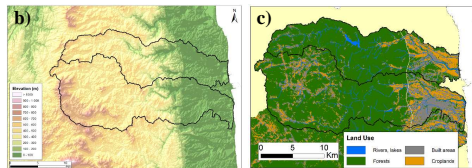
1, C274–C277, 2014

Interactive  
Comment

1 Figure 1.



2



3

4

5

Fig. 1.

Full Screen / Esc

Printer-friendly Version

Interactive Discussion

Discussion Paper



# SOIL

1, C274–C277, 2014

Interactive  
Comment

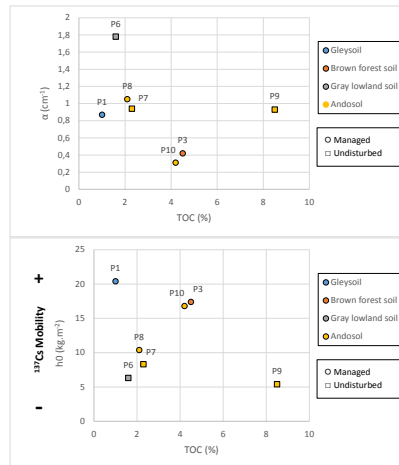


Fig. 2.

Full Screen / Esc

Printer-friendly Version

Interactive Discussion

Discussion Paper

