

Interactive comment on “Depth distribution of radiocesium in Fukushima paddy fields and implications for ongoing decontamination works” by H. Lepage et al.

H. Lepage et al.

hugo.lepage@lsce.ipsl.fr

Received and published: 5 December 2014

Dear Referee,

Please find enclosed as a supplement (soil-2014-27-supplement.pdf) my response to your comments formatted in a table to facilitate the reading. I hope this will not bother you.

Sincerely

Hugo Lepage

C274

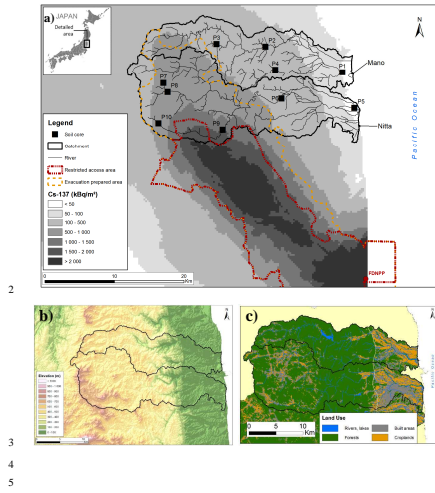
Please also note the supplement to this comment:

<http://www.soil-discuss.net/1/C274/2014/soild-1-C274-2014-supplement.pdf>

Interactive comment on SOIL Discuss., 1, 401, 2014.

C275

1 Figure 1.



23

Fig. 1.

C276

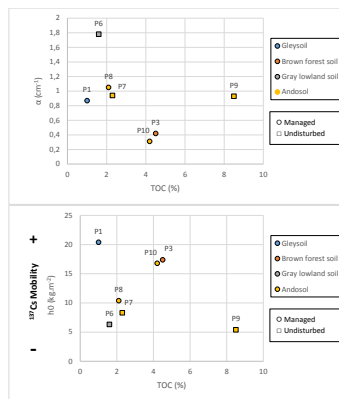


Fig. 2.

C277