



# Missing the input: the underrepresentation of plant physiology in global soil carbon research

Sajjad Raza, Hannah V. Cooper, Nicholas T. Girkin, Matthew S. Kent, Malcolm J. Bennett, Sacha J. Mooney, and Tino Colombi

School of Biosciences, University of Nottingham, Sutton Bonington, LE12 5RD, United Kingdom

**Correspondence:** Tino Colombi (tino.colombi@nottingham.ac.uk)

Received: 21 November 2024 – Discussion started: 28 November 2024

Revised: 11 February 2025 – Accepted: 27 February 2025 – Published: 5 May 2025

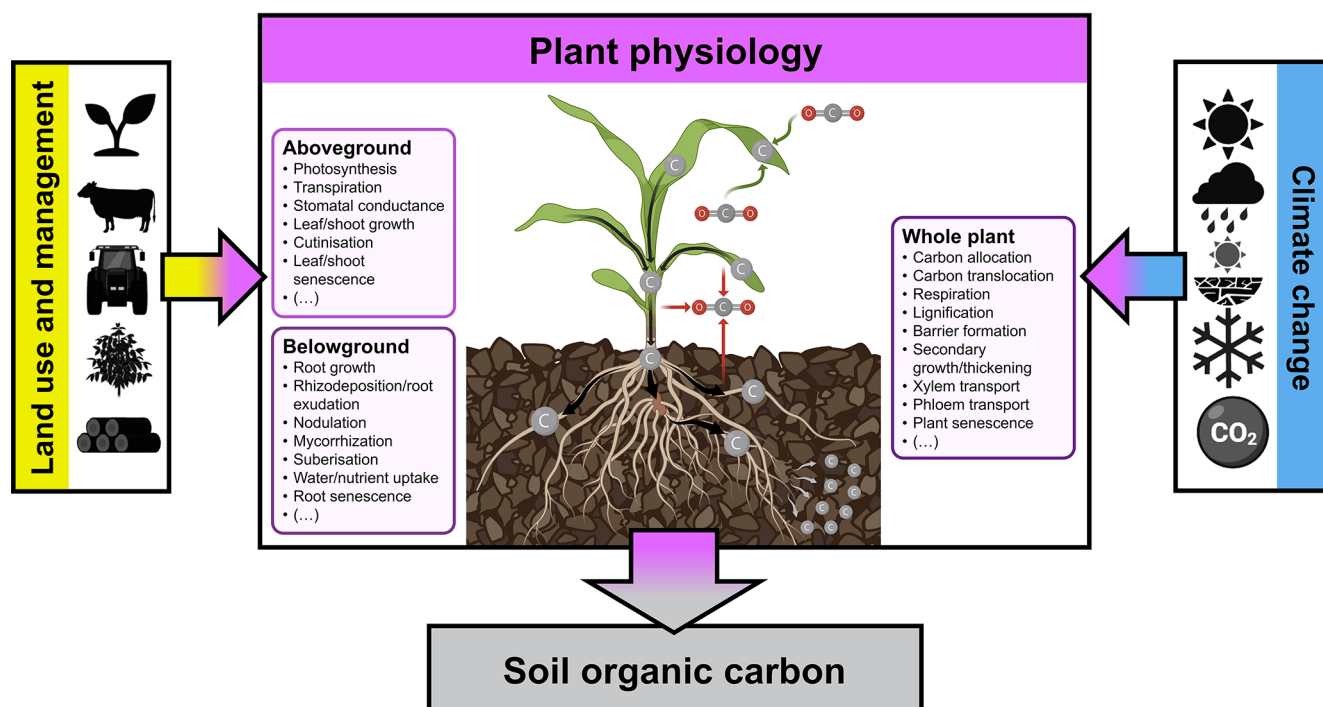
**Abstract.** Plant processes regulating the quantity and quality of soil organic carbon inputs such as photosynthesis, above- and below-ground plant growth, and root exudation are integral to our understanding of soil carbon dynamics. However, based on a bibliometric analysis including more than 55 000 scientific papers, we found that plant physiology has been severely underrepresented in global soil organic carbon research. Less than 10 % of peer-reviewed soil organic carbon research published in the last century addressed plant physiological processes relevant to soil carbon inputs. Similarly, plant physiology was overlooked by the overwhelming majority (> 90 %) of the peer-reviewed literature investigating linkages between soil organic carbon, climate change, and land use and land management. These findings show that our understanding of both soil carbon dynamics and the carbon sequestration potential of terrestrial ecosystems is largely built on research that neglects the fundamental processes underlying organic carbon inputs. We maintain that the active engagement of plant scientists in soil carbon research is imperative for shedding light on this blind spot. Long-term interdisciplinary research will be essential for developing a comprehensive perspective of soil carbon dynamics and informing and designing effective policies that support soil carbon sequestration.

## 1 Introduction

Plants and their ability to fix atmospheric carbon dioxide (CO<sub>2</sub>) through photosynthesis are essential to organic matter build-up in soil (Hirt et al., 2023), the second largest carbon pool on Earth (Lal, 2018). The overwhelming majority of organic carbon in soil is derived directly or indirectly from above- and below-ground plant residues or rhizodeposits, referring to all organic compounds released by roots (Pausch and Kuzyakov, 2018) (Fig. 1). Beyond its critical role in terrestrial carbon sequestration, soil organic carbon supports soil fertility and ecosystem productivity through improved water infiltration and retention, enhanced soil structure formation, and greater soil biological activity (Lal, 2018). Since the United Nations Conference on Environment and Development (UNCED) held in Rio de Janeiro, Brazil, in 1992, soil organic carbon and its fundamental importance in climate change mitigation and adaptation have gradually gained importance in the public discussion on sustainable develop-

ment (Montanarella and Alva, 2015). Recently launched international policy frameworks and initiatives such as the European Green Deal (European Commission, 2019) and the “4 per mille” initiative (Lal et al., 2015) aim to enhance soil organic carbon levels through adaptations in land use and management. Moreover, the Intergovernmental Panel on Climate Change (IPCC) highlighted the vulnerability of soil organic carbon stocks to environmental disturbances associated with climate change, including rising temperatures and extreme weather events such as drought, flooding, or heat waves (IPCC, 2023).

Environmental conditions affect soil organic carbon turnover and stabilisation as well as plants and their physiology, which can lead to feedback with soil carbon turnover through changes in soil moisture, nutrient availability, or soil structure. In addition, plant physiological responses to environmental cues have direct impacts on the quality and quantity of soil carbon inputs. For example, a global meta-analysis



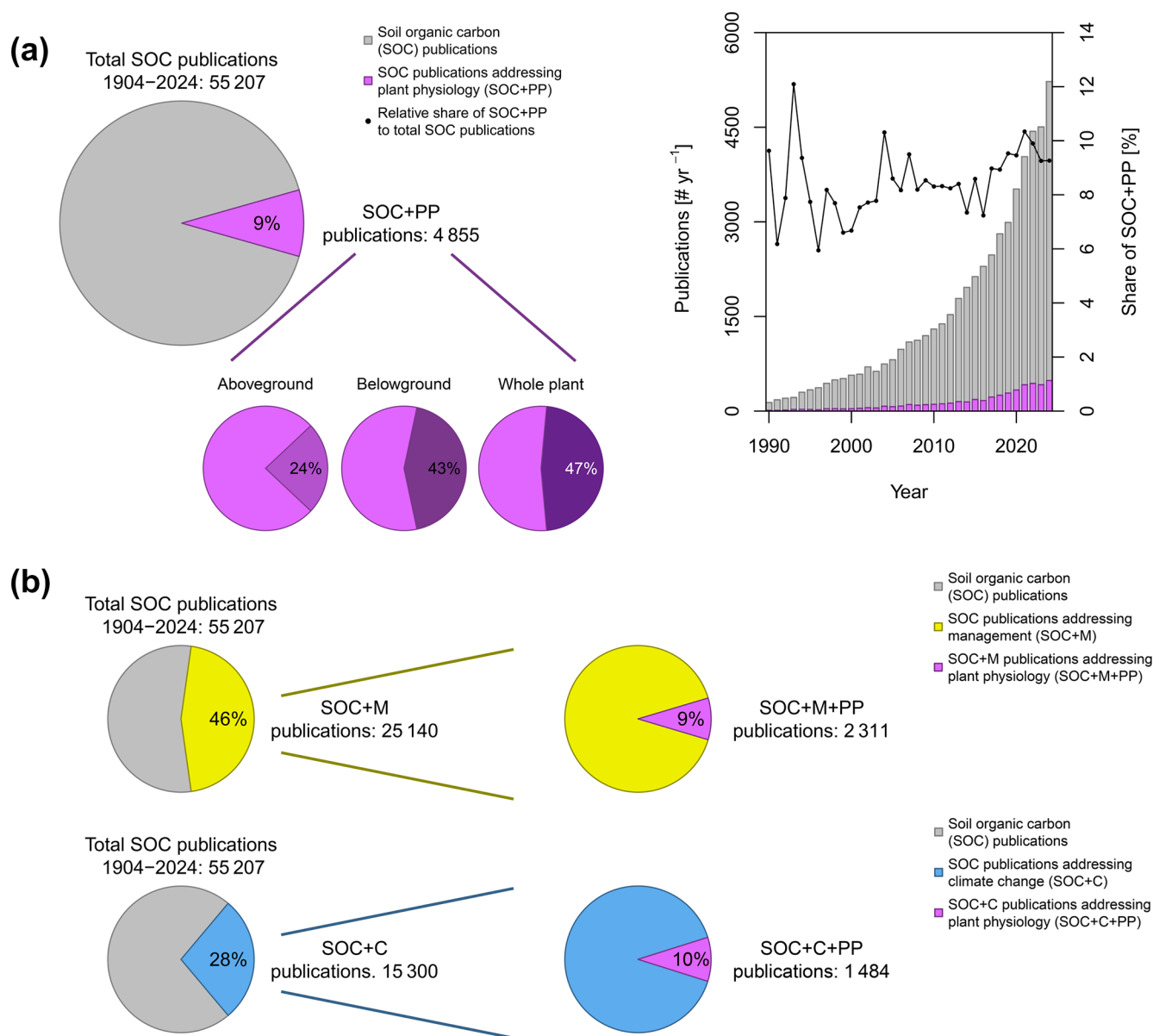
**Figure 1.** Conceptual schematic depicting the central role of plants in soil carbon dynamics. Carbon fluxes from the atmosphere into the soil underlying the quantity and quality of soil organic carbon inputs are driven by a suite of plant physiological processes. These physiological processes and their responses to alterations in land use and management or climatic conditions are therefore key to the current and future potential for soil carbon sequestration. Some elements were created with BioRender.com.

encompassing natural and managed ecosystems across various biomes demonstrated that rising temperatures result in a shift in carbon allocation from shoots to roots, particularly in drier climates (Zhou et al., 2022). Similar shifts in carbon allocation from shoots to roots have been reported for wheat in response to decreasing fertilisation intensity (Hirte et al., 2021). Moreover, it has been shown that decreasing fertilisation intensity and water availability increases rhizodeposition rates in arable crops (wheat and maize; Hirte et al., 2018) and temperate tree species (*Picea abies* and *Fagus sylvatica*; Brunn et al., 2022), respectively. Besides affecting carbon allocation between different plant organs and metabolic pathways, environmental conditions such as temperature (Sanaullah et al., 2014; Wang et al., 2012), soil moisture (Sanaullah et al., 2014), nutrient availability, and atmospheric CO<sub>2</sub> concentration (Blaschke et al., 2002) alter the biochemical composition of plant tissues and thus the quality of plant litter inputs to soil. Hence, plant physiological responses to climatic conditions or changes in land use and management are absolutely imperative to our understanding of soil carbon dynamics and thus the carbon sequestration potential of terrestrial ecosystems (Fig. 1).

## 2 Soil carbon research largely overlooks plant physiology

Despite the intrinsic linkages between plants, environmental conditions, and soil carbon inputs, plant physiology has been severely underrepresented in global peer-reviewed research on soil organic carbon. We quantified this underrepresentation of plant physiological processes underlying the inputs of organic carbon to soil through bibliometric analyses of data extracted from Web of Science™ (<https://www.webofscience.com/>, last access: 31 January 2025), focusing on publication titles, abstracts, keywords, the field, and author keywords (see the Appendix for details). To obtain a comprehensive picture of the importance of plant physiology in soil organic carbon research, we included 64 different plant processes that are directly linked to soil organic carbon inputs (Table S1 in the Supplement).

Our bibliometric analyses revealed that, out of 55 207 publications on soil organic carbon published between 1904 and 2024, just 4855 addressed plant physiology (9%; Fig. 2a). To gain additional insight, we grouped the 64 physiological processes into the following three sub-categories: above-ground physiology, below-ground physiology, and whole-plant physiology, i.e. processes occurring in above- and below-ground plant tissues (Table S2). This grouping revealed that above-ground physiological processes were rep-



**Figure 2.** The representation of plant physiology in global soil organic carbon research. **(a)** Share of soil organic carbon publications addressing plant physiological processes displayed (left) cumulatively from 1904 to 2023 and (right) yearly from 1990 to 2023. Small pie charts in the left panel depict representations of above-ground, below-ground, and whole-plant physiological processes in soil organic carbon publications addressing plant physiology. **(b)** Soil organic carbon publications that addressed (top) land use and management and (bottom) climate change effects and the share of publications within these two categories addressing plant physiological processes from 1904 to 2023.

resented in 24 % of soil organic carbon research addressing plant physiology. Below-ground and whole-plant physiological processes were each represented in around 45 % of the publications (Fig. 2a). More than 95 % of the publications on soil organic carbon were published after 1990, and the yearly research output increased exponentially between 1990 and 2024. We observed a parallel temporal trend for peer-reviewed publications on soil organic carbon that addressed plant physiological processes. Therefore, the relative proportion of publications addressing plant physiologi-

cal processes in the total number of soil organic carbon publications remained approximately constant between 1990 and 2024 (6 %–12 %; Fig. 2a). Similarly, plant physiology was also largely overlooked in the peer-reviewed literature on soil organic carbon modelling (940 out of 13 644 publications, i.e. 7 %; Fig. S1 in the Supplement).

Further bibliometric analyses were conducted to quantify the importance of land use and management and climate change in soil organic carbon research. For these analyses, we included more than 45 keywords to capture relevant land

use and management systems and more than 25 keywords to cover climate change and the associated environmental conditions (Table S1). Land use and management were addressed by 46 % of the peer-reviewed studies on soil organic carbon published between 1904 and 2024 (25 140 out of 55 207 publications), while climate change and the concomitant environmental conditions were addressed in 28 % of the publications (15 300 out of 55 207 publications; Fig. 2b). In contrast to plant physiology, land use and management as well as climate change have been increasingly represented in global research on soil organic carbon. The share of publications on soil organic carbon that addressed land use and management increased from around 35 % in the 1990s to almost 50 % in the 2020s. Similarly, the share of soil organic carbon publications addressing climate change and the associated environmental conditions increased from around 10 %–15 % in the early 1990s to more than 30 % in the 2020s (Fig. S1). This increase can likely be attributed to discussions in the public arena on the role of land use and management in climate change mitigation and sustainable development (European Commission, 2019; Lal et al., 2015) that followed the United Nations Conference on Environment and Development (UNCED) in 1992 (Montanarella and Alva, 2015).

However, plant physiology was severely underrepresented in global research elucidating associations between soil organic carbon, land use and management, or climate change. Less than 10 % of the research covering linkages between soil organic carbon and land use and management (2311 out of 25 140 publications) or climate change (1484 out of 15 300 publications), respectively, addressed plant physiological processes (Fig. 2b). In the case of climate change, the share of publications addressing plant physiological processes even decreased from around 18 % in the 1990s to around 9 % in recent years. For land use and management, the percentage of publications addressing plant physiological processes remained around 9 % between the 1990s and the 2020s (Fig. S1). Hence, our bibliometric analyses highlighted that our current understanding of soil carbon dynamics is overwhelmingly based on research that does not account for plant physiological responses to changes in land use and management or climatic conditions. We can only speculate why plant physiology was largely overlooked in soil organic carbon research, but the recently reported separation of soil and agricultural sciences in the 1980s (Sigl et al., 2023) may have been a key driver. Ultimately, the staggering underrepresentation of plant physiology in soil organic carbon research reported here (Figs. 2 and S1) severely limits the predictive power of terrestrial carbon models and prevents a comprehensive perspective of the potential for soil carbon sequestration (Fatichi et al., 2019).

### 3 Long-term interdisciplinary research efforts are key

Interdisciplinary research efforts that explicitly integrate plant physiological processes into studies on soil carbon dynamics are urgently needed to develop a more holistic understanding of the drivers underpinning soil carbon sequestration (Hirt et al., 2023). Recent technological and methodological advancements have substantial potential to decipher the complex interactive effects of plant physiological processes and environmental conditions on soil carbon dynamics (Ahkami et al., 2024; Mueller et al., 2024). For example, the combination of three-dimensional (3D) imaging approaches such as X-ray and positron emission tomography with spectroscopic techniques and carbon isotope tracing facilitates quantification of the flux of photosynthates along the shoot–root–soil axis (Jahnke et al., 2009; Lippold et al., 2023). Moreover, isotope tracing allows quantification of carbon transfer from plants to mycorrhizal fungi and bacteria associated with roots and fungal hyphae (Kaiser et al., 2015; Vidal et al., 2018) and elucidation of the fate of plant litter and rhizodeposits into different soil carbon pools (Cotrufo et al., 2022; Mueller et al., 2024). Thus, combining different cutting-edge techniques offers ample potential to decipher the interactions between plant physiological and soil processes and their impact for soil carbon input. Especially when combined with empirical and mechanistic mathematical models (Ahkami et al., 2024), these approaches enable new mechanistic and predictive insights into the interactions between plant physiological processes and soil carbon dynamics.

However, long-term data obtained at the field and landscape scales are indispensable when quantifying temporal trajectories of soil organic carbon stocks (Smith et al., 2020). We therefore maintain that the regular quantification of plant physiological processes that govern the quality and quantity of soil carbon inputs must become standard in soil surveying, long-term field experiments, and observation networks dedicated to soil carbon dynamics. This includes but is not limited to above- and below-ground plant growth (Hirte et al., 2021; Zhou et al., 2022), degrees of lignification and suberisation of plant tissues determining the biochemical quality of plant litter (Blaschke et al., 2002; Wang et al., 2012), and the quantity and composition of rhizodeposits (Brunn et al., 2022; Hirte et al., 2018). Thereby, the assessment of plant physiological processes using drones (Fullana-Pericàs et al., 2022) or satellites (Jonard et al., 2020) may complement and – at least partially – replace laborious ground truth measurements. As for soil organic carbon measurements (Even et al., 2025), standardised protocols to quantify physiological processes underlying soil carbon inputs will be key in facilitating regional and global data synthesis.

Plant scientists, including geneticists, physiologists, and ecologists, must become an active and integral part of the global soil organic carbon research community. Otherwise,



the environmental and genetic drivers underpinning soil carbon inputs will remain a blind spot in our collective understanding of the capacity for soil carbon sequestration (Hirt et al., 2023). Therefore, it is crucial for the global scientific community, including researchers and funding agencies, to recognise the pivotal role of plant physiology in shaping soil carbon dynamics. Without this recognition, our understanding of soil carbon sequestration potential across diverse terrestrial ecosystems will remain incomplete. To accurately model and predict these dynamics – whether through empirical, mechanistic, or geostatistical models – long-term data collection at appropriate spatial and temporal scales is essential (Fatichi et al., 2019; Smith et al., 2020). These models are indispensable for extrapolating interactions across ecosystems and quantifying effects of climatic conditions and land use and management on plant physiological processes and the resulting impacts on soil carbon dynamics. However, developing such models requires sustained investment in long-term research and improved funding mechanisms that facilitate collaboration among interdisciplinary groups of researchers and relevant stakeholders. Only with these continued efforts can we develop the comprehensive understanding necessary to inform effective policies that support and enhance soil carbon sequestration.

## Appendix A: Query design, data extraction, and processing

Comprehensive bibliometric analyses were conducted using the “advanced search” option in the Web of Science™ database from Clarivate™ (Web of Science Core Collection; <https://www.webofscience.com/>, last access: 31 January 2025). Thereby, the topic search function (“TS”) was used to cover publication titles, abstracts, keywords and the field (i.e. keywords plus®), and author keywords. To quantify the share of publications (on soil organic carbon in general or soil organic carbon modelling) addressing plant physiology, land use and management, climate change and the associated environmental conditions, five separate queries were built: (i) soil organic carbon, (ii) soil organic carbon modelling, (iii) plant physiological processes, (iv) land use and management, and (v) climate change and the associated environmental conditions. For each of the five queries, a list of relevant keywords and the corresponding search terms was defined – (i): 2 keywords, 11 search terms; (ii): 1 keyword, 4 search terms; (iii): 64 keywords, 80 search terms; (iv): 47 keywords, 66 search terms; and (v): 28 keywords, 41 search terms (Table S1).

Within each query, the different search terms were connected with the Boolean operator “OR” to ensure the retrieval of all relevant records. Combining the different queries then allowed us to quantify the share of peer-reviewed publications on soil organic carbon addressing plant physiological processes, land use and management, climate change

and the associated environmental conditions, or combinations thereof. To do so, the search terms of the soil organic carbon query were connected to the search terms of one or several of the other three queries using the Boolean operator “AND”. Data searches were conducted on 31 January 2025, including all records available on Web of Science™, and the results were exported as .bib, .csv, and .ris files.

Quality checks of the raw data exported from Web of Science™ were performed with a standardised data-filtering pipeline implemented in R version 4.0.2 (R Core Team, 2020) using the bibliometrix package (Aria and Cuccurullo, 2017). First, duplicates and non-English publications were removed. Then, we removed all publications published in 2025 to ensure that only complete years were included. Finally, the data were limited to what is typically considered primary research or scholarly works, i.e. articles, proceedings papers, review articles, early access papers, and data papers (Fig. S2). These filtering steps reduced the total number of publications included in our analyses by around 5 % from 58 004 to 55 207. Data visualisation was performed in R using the stats package (R Core Team, 2020).

**Data availability.** The bibliometric data are provided in the Supplement (Data S1 in the Supplement).

**Supplement.** The supplement related to this article is available online at <https://doi.org/10.5194/soil-11-363-2025-supplement>.

**Author contributions.** SR and TC conceived the study. All the authors contributed to the query design. SR performed the bibliometric analyses with the help of MSK. SR and TC wrote the original draft with inputs from HVC. NTG, MSK, MJB, and SJM contributed to the reviewing and editing.

**Competing interests.** The contact author has declared that none of the authors has any competing interests.

**Disclaimer.** Publisher’s note: Copernicus Publications remains neutral with regard to jurisdictional claims made in the text, published maps, institutional affiliations, or any other geographical representation in this paper. While Copernicus Publications makes every effort to include appropriate place names, the final responsibility lies with the authors.

**Acknowledgements.** BioRender (<https://www.biorender.com/>, last access: 4 February 2025) was used to create elements of Fig. 1.

**Financial support.** This research has been supported by the University of Nottingham (personal fellowship to Tino Colombi), the

Biotechnology and Biological Sciences Research Council (grant no. BB/X018806/1), the Natural Environment Research Council (grant no. NE/X015238/1), and the Human Frontier Science Program (grant no. RGP0066/2021).

**Review statement.** This paper was edited by Paul Hallett and reviewed by Stefano Manzoni and Grant A. Campbell.

## References

- Ahkami, A. H., Qafoku, O., Roose, T., Mou, Q., Lu, Y., Cardon, Z. G., Wu, Y., Chou, C., Fisher, J. B., Varga, T., Handakumbura, P., Aufrecht, J. A., Bhattacharjee, A., and Moran, J. J.: Emerging sensing, imaging, and computational technologies to scale nano-to macroscale rhizosphere dynamics – Review and research perspectives, *Soil Biol. Biochem.*, 189, 109253, <https://doi.org/10.1016/j.soilbio.2023.109253>, 2024.
- Aria, M. and Cuccurullo, C.: bibliometrix: An R-tool for comprehensive science mapping analysis, *J. Informetr.*, 11, 959–975, <https://doi.org/10.1016/j.joi.2017.08.007>, 2017.
- Blaschke, L., Forstreuter, M., Sheppard, L. J., Leith, I. K., Murray, M. B., and Polle, A.: Lignification in beech (*Fagus sylvatica*) grown at elevated CO<sub>2</sub> concentrations: interaction with nutrient availability and leaf maturation, *Tree Physiol.*, 22, 469–477, <https://doi.org/10.1093/treephys/22.7.469>, 2002.
- Brunn, M., Hafner, B. D., Zwetsloot, M. J., Weikl, F., Pritsch, K., Hikino, K., Ruehr, N. K., Sayer, E. J., and Bauerle, T. L.: Carbon allocation to root exudates is maintained in mature temperate tree species under drought, *New Phytol.*, 235, 965–977, <https://doi.org/10.1111/nph.18157>, 2022.
- Cotrufo, M. F., Haddix, M. L., Kroeger, M. E., and Stewart, C. E.: The role of plant input physical-chemical properties, and microbial and soil chemical diversity on the formation of particulate and mineral-associated organic matter, *Soil Biol. Biochem.*, 168, 108648, <https://doi.org/10.1016/j.soilbio.2022.108648>, 2022.
- European Commission: The European Green Deal, 1–23, <https://eur-lex.europa.eu/legal-content/EN/TXT/?uri=COM:2019:640:FIN> (last access: 28 April 2025), 2019.
- Even, R. J., Machmuller, M. B., Lavalley, J. M., Zelikova, T. J., and Cotrufo, M. F.: Large errors in soil carbon measurements attributed to inconsistent sample processing, *SOIL*, 11, 17–34, <https://doi.org/10.5194/soil-11-17-2025>, 2025.
- Fatichi, S., Pappas, C., Zscheischler, J., and Leuzinger, S.: Modelling carbon sources and sinks in terrestrial vegetation, *New Phytol.*, 221, 652–668, <https://doi.org/10.1111/nph.15451>, 2019.
- Fullana-Pericàs, M., Conesa, M. À., Gago, J., Ribas-Carbó, M., and Galmés, J.: High-throughput phenotyping of a large tomato collection under water deficit: Combining UAVs' remote sensing with conventional leaf-level physiologic and agronomic measurements, *Agr. Water Manage.*, 260, 107283, <https://doi.org/10.1016/j.agwat.2021.107283>, 2022.
- Hirt, H., Al-Babili, S., Almeida-Trapp, M., Martin, A., Aranda, M., Bartels, D., Bennett, M., Blilou, I., Boer, D., Boulouis, A., Bowler, C., Brunel-Muguet, S., Chardon, F., Colcombet, J., Colot, V., Daszkowska-Golec, A., Dinnyes, J. R., Field, B., Froehlich, K., Gardener, C. H., Gojon, A., Gomès, E., Gomez-Alvarez, E. M., Gutierrez, C., Havaux, M., Hayes, S., Heard, E., Hodges, M., Alghamdi, A. K., Laplace, L., Lauersen, K. J., Leonhardt, N., Johnson, X., Jones, J., Kollist, H., Kopriva, S., Krapp, A., Masson, M. L., McCabe, M. F., Merendino, L., Molina, A., Ramirez, J. L. M., Mueller-Roeber, B., Nicolas, M., Nir, I., Orduna, I. O., Pardo, J. M., Reichheld, J., Rodriguez, P. L., Rouached, H., Saad, M. M., Schlögelhofer, P., Singh, K. A., De Smet, I., Stanschewski, C., Stra, A., Tester, M., Walsh, C., Weber, A. P. M., Weigel, D., Wigge, P., Wrzaczek, M., Wulff, B. B. H., and Young, I. M.: PlantACT! – how to tackle the climate crisis, *Trends Plant Sci.*, 28, 537–543, <https://doi.org/10.1016/j.tplants.2023.01.005>, 2023.
- Hirte, J., Leifeld, J., Abiven, S., Oberholzer, H. R., and Mayer, J.: Below ground carbon inputs to soil via root biomass and rhizodeposition of field-grown maize and wheat at harvest are independent of net primary productivity, *Agr. Ecosyst. Environ.*, 265, 556–566, <https://doi.org/10.1016/j.agee.2018.07.010>, 2018.
- Hirte, J., Walder, F., Hess, J., Büchi, L., Colombi, T., van der Heijden, M. G., and Mayer, J.: Enhanced root carbon allocation through organic farming is restricted to topsoils, *Sci. Total Environ.*, 755, 143551, <https://doi.org/10.1016/j.scitotenv.2020.143551>, 2021.
- IPCC: Sections, Climate Change 2023: Synthesis Report. Contribution of Working Groups I, II and III to the Sixth Assessment Report of the Intergovernmental Panel on Climate Change, Geneva, Switzerland, 35–115, <https://doi.org/10.59327/IPCC/AR6-9789291691647>, 2023.
- Jahnke, S., Menzel, M. I., Dusschoten, D. Van, Roeb, G. W., Bu, J., Temperton, V. M., Hombach, T., Streun, M., Beer, S., Khodaverdi, M., Ziemons, K., Coenen, H. H., and Schurr, U.: Combined MRI – PET dissects dynamic changes in plant structures and functions, *Plant J.*, 59, 634–644, <https://doi.org/10.1111/j.1365-3113X.2009.03888.x>, 2009.
- Jonard, F., De Cannière, S., Brüggemann, N., Gentile, P., Gianotti, D. J. S., Lobet, G., Miralles, D. G., Montzka, C., Pagán, B. R., Rascher, U., and Vereecken, H.: Value of sun-induced chlorophyll fluorescence for quantifying hydrological states and fluxes: Current status and challenges, *Agr. Forest Meteorol.*, 291, 108088, <https://doi.org/10.1016/j.agrformet.2020.108088>, 2020.
- Kaiser, C., Kilburn, M. R., Clode, P. L., Fuchslueger, L., Koranda, M., Cliff, J. B., Solaiman, Z. M., and Murphy, D. V.: Exploring the transfer of recent plant photosynthates to soil microbes: Mycorrhizal pathway vs. direct root exudation, *New Phytol.*, 205, 1537–1551, <https://doi.org/10.1111/nph.13138>, 2015.
- Lal, R.: Digging deeper: A holistic perspective of factors affecting soil organic carbon sequestration in agroecosystems, *Glob. Change Biol.*, 24, 3285–3301, <https://doi.org/10.1111/gcb.14054>, 2018.
- Lal, R., Negassa, W., and Lorenz, K.: Carbon sequestration in soil, *Curr. Opin. Env. Sust.*, 15, 79–86, <https://doi.org/10.1016/j.cosust.2015.09.002>, 2015.
- Lippold, E., Schlüter, S., Mueller, C. W., Höschen, C., Harrington, G., Kilian, R., Gocke, M. I., Lehdorff, E., Mikutta, R., and Vetterlein, D.: Correlative Imaging of the Rhizosphere-A Multimethod Workflow for Targeted Mapping of Chemical Gradients, *Environ. Sci. Technol.*, 57, 1538–1549, <https://doi.org/10.1021/acs.est.2c07340>, 2023.
- Montanarella, L. and Alva, I. L.: Putting soils on the agenda: the three Rio Conventions and the post-2015

- development agenda, *Curr. Opin. Env. Sust.*, 15, 41–48, <https://doi.org/10.1016/j.cosust.2015.07.008>, 2015.
- Mueller, C. W., Baumert, V., Carminati, A., Germon, A., Holz, M., Kögel-Knabner, I., Peth, S., Schlüter, S., Uteau, D., Vetterlein, D., Teixeira, P., and Vidal, A.: From rhizosphere to detritosphere – Soil structure formation driven by plant roots and the interactions with soil biota, *Soil Biol. Biochem.*, 193, 109396, <https://doi.org/10.1016/j.soilbio.2024.109396>, 2024.
- Pausch, J. and Kuzyakov, Y.: Carbon input by roots into the soil: Quantification of rhizodeposition from root to ecosystem scale, *Glob. Change Biol.*, 24, 1–12, <https://doi.org/10.1111/gcb.13850>, 2018.
- R Core Team: R: A Language and Environment for Statistical Computing, <http://www.r-project.org> (last access: 31 January 2025), 2020.
- Sanaullah, M., Chabbi, A., Girardin, C., Durand, J.-L., Poirier, M., and Rumpel, C.: Effects of drought and elevated temperature on biochemical composition of forage plants and their impact on carbon storage in grassland soil, *Plant Soil*, 374, 767–778, <https://doi.org/10.1007/s11104-013-1890-y>, 2014.
- Sigl, L., Falkenberg, R., and Fochler, M.: Changing articulations of relevance in soil science: Diversity and (potential) synergy of epistemic commitments in a scientific discipline, *Stud. Hist. Philos. Sci.*, 97, 79–90, <https://doi.org/10.1016/j.shpsa.2022.12.004>, 2023.
- Smith, P., Soussana, J. F., Angers, D., Schipper, L., Chenu, C., Rasse, D. P., Batjes, N. H., van Egmond, F., McNeill, S., Kuhnert, M., Arias-Navarro, C., Olesen, J. E., Chirinda, N., Fornara, D., Wollenberg, E., Álvaro-Fuentes, J., Sanz-Cobena, A., and Klumpp, K.: How to measure, report and verify soil carbon change to realize the potential of soil carbon sequestration for atmospheric greenhouse gas removal, *Global Change Biol.*, 26, 219–241, <https://doi.org/10.1111/gcb.14815>, 2020.
- Vidal, A., Hirte, J., Franz Bender, S., Mayer, J., Gatterer, A., Höschen, C., Schädler, S., Iqbal, T. M., and Mueller, C. W.: Linking 3D soil structure and plant-microbe-soil carbon transfer in the rhizosphere, *Front. Environ. Sci.*, 6, 1–14, <https://doi.org/10.3389/fenvs.2018.00009>, 2018.
- Wang, J., Duan, B., and Zhang, Y.: Effects of experimental warming on growth, biomass allocation, and needle chemistry of *Abies faxoniana* in even-aged monospecific stands, *Plant Ecol.*, 213, 47–55, <https://doi.org/10.1007/s11258-011-0005-1>, 2012.
- Zhou, L., Zhou, X., He, Y., Fu, Y., Du, Z., Lu, M., Sun, X., Li, C., Lu, C., Liu, R., Zhou, G., Bai, S. H., and Thakur, M. P.: Global systematic review with meta-analysis shows that warming effects on terrestrial plant biomass allocation are influenced by precipitation and mycorrhizal association, *Nat. Commun.*, 13, 4914, <https://doi.org/10.1038/s41467-022-32671-9>, 2022.