



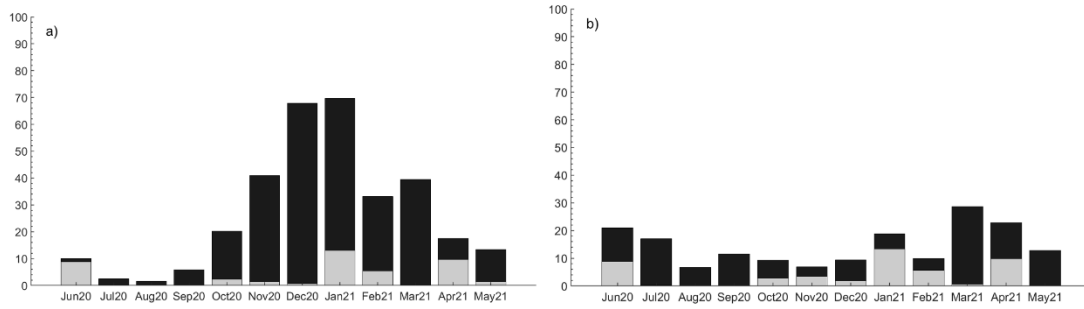
*Supplement of*

## **Spatial and temporal heterogeneity of soil respiration in a bare-soil Mediterranean olive grove**

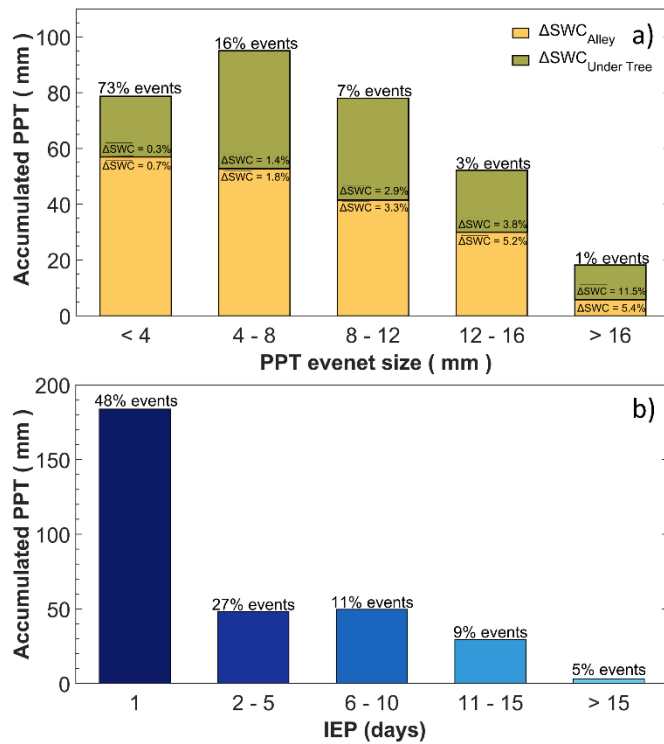
**Sergio Aranda-Barranco et al.**

*Correspondence to:* Sergio Aranda-Barranco (sergioaranda@ugr.es)

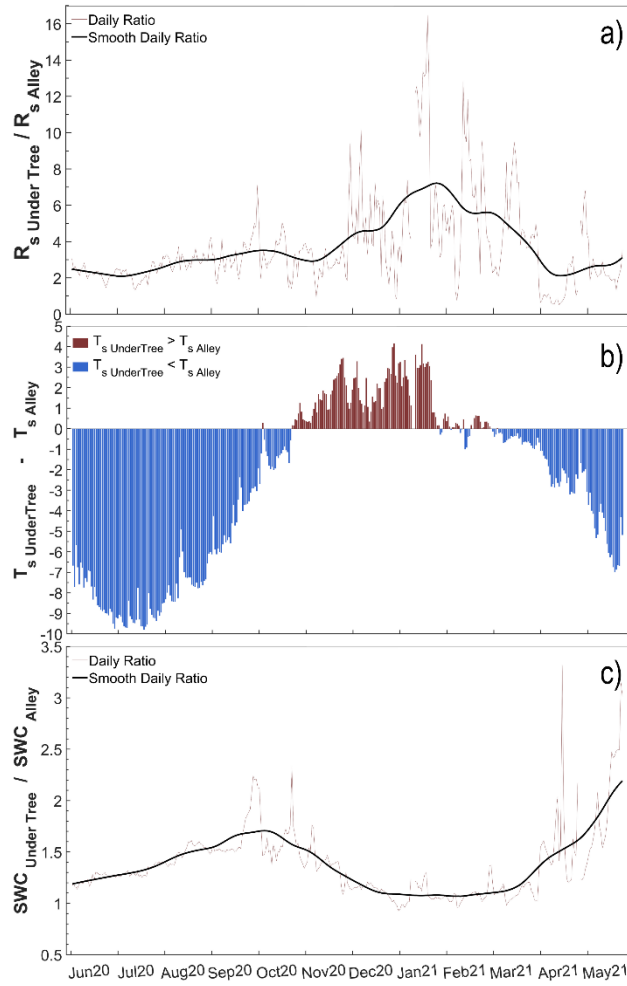
The copyright of individual parts of the supplement might differ from the article licence.



**Figure S1: Percentage of gaps in the data each month of measurement due to instrumentation malfunction (gray) and after applying filters (black) in a) transparent and b) opaque chambers.**



**Figure S2: Description of rainfall distribution. (a) Accumulated precipitation by inter-event period classes (IEP, days). (b) Accumulated precipitation by precipitation event size, where orange and green areas represent the proportion of increasing SWC between alleys and under-tree. (c) Accumulated precipitation by the inter-event period of rain (IEP).**



**Figure S3: Time series of a)  $R_s$  ratios between chambers under trees and chambers in alleys. The gray dashed line refers to daily values and the black line refers to moving average daily values ( $\pm 30$  adjacent days window); b)  $T_s$  differences between chambers under the trees and chambers in alleys; and c) SWC ratios between chambers under the trees and chambers in alleys. The gray dashed line refers to the daily values, and the black line refers to the moving average daily values ( $\pm 30$  adjacent day window).**